

## Be prepared to pay higher parking fines

KATIE BENNETT  
NEWS STRINGER

Starting this fall, students will have to weight the value of parking illegally.

The student government Parking and Traffic Committee discussed at its meeting increasing parking ticket fines in an effort to stop illegal parking.

According to Robert Vanzo, director of Administrative Services, parking tickets no longer seem like a deterrent from parking illegally.

"People are willing to take the risk and pay the ticket if they get one, so we're hoping they may think twice if we raise the price," Vanzo said.

Senator Alyssa Gonterman supports the reasoning behind the increase.

"The whole point of tickets is to prevent people from parking where they shouldn't, but \$10 doesn't deter anyone," Gonterman said.

Tickets issued for meter time expiration or improper display of parking stickers will be increased by

\$5 from the previous \$10 fine. Tickets issued for parking in the wrong lot, parking in a no-parking zone or failure to have a current decal will be increased to \$25 instead of the current \$15 fine.

Parking Services will also be investigating a reverse payment system which adds an extra \$5 for tickets that are not paid 10 days after they are issued.

According to Carolyn Turner, manager of campus parking, the procedure was adopted as an incentive to make students pay on time.

Ticket fees are also being increased to cut the number of tickets issued. According to Parking Service's Web site "Fast Stats" compilation, 33,855 tickets were issued from 1998-99 while 40,603 were issued from 1999-2000.

"The last time we increased the fine, there was a significant reduction in the number of tickets issued, yet the revenue stayed the same," Turner said.

see TICKET, page 2



BETH KRUZAN/ALESTLE  
**Beware of parking past the legal meter limits. Fines will increase for all parking violations in the fall.**



## Plastic answer to heavy plates

ELIZABETH GRIMSLEY  
NEWS REPORTER

Temporary solutions are in place as Food Service officials strive for a resolution to the weighty plate issue.

Diners in the Center Court Friday found plastic plates instead of the usual china plates, though many students opted for a takeout container instead.

"This is temporary while we continue the investigation," Morris University Center Director Mary Robinson said.

The Food Service staff began looking for ways to fix

inconsistencies in charges for food purchased on plates from the "Hot Stuff" line and the salad bar.

Robinson put a sign above the "Hot Stuff" line Friday explaining the problem.

An Alestle investigation revealed that customers may have been charged as much as 52 cents for a plate alone. The Food Service policy is that the weight of the plate be deducted from the total cost of the meal.

The Food Service staff is confident that the problem was not intentional, rather it was caused by inconsistencies in plate

weights.

This variation is among the first things officials checked.

Robinson said Food Service began the search for a solution by weighing the 400 china plates in the Center Court area to see how great the discrepancy is. A meeting of the MUC Advisory Board has also been called and the company that supplies the scales is coming to test them and make any necessary calibrations.

"I take this issue seriously and I'm looking forward to having it resolved," Robinson said.

## Professor Kamil Winter loses cancer battle

ANTHONY WATT  
ASSISTANT NEWS EDITOR

SIUE staff and alumni are remembering professor emeritus Kamil Winter, 82, who died Sunday.

Winter taught broadcast journalism at SIUE for approximately 20 years.

"He was a dedicated and consummate professional," mass comm professor Riley Maynard said. "He was a very hard teacher who always had an interesting perspective on things. He grew up in Europe and worked under communism for awhile."

"There are a lot of people who went to school here prior to 1987 who would consider him the best teacher in the program," Maynard added.

Winter was born in Czechoslovakia and lived through World War II and the communist occupation of his nation.

In 1968, as director of television for the Czechoslovakian Broadcasting System, Winter and

other Czech journalists made clandestine broadcasts reporting Soviet invasion of his country.

He later fled to England and came to America, teaching at SIUE.

"He is the single most important reason why I stayed in news beyond my college education," Tom Dehner, news director of WSIE, said. "He never accepted 90 percent. He always kept the bar high to push his students towards academic and professional excellence."

The last thing you ever wanted to do was disappoint Kamil Winter."

Winter died in his home at 4:20 p.m. of cancer. He is survived by a daughter, Sonia Winter.

Information on funeral arrangements is pending.



Kamil Winter

## Costly gas prices leave SIUE \$500,000 in hole

DANIEL TOBERMAN  
ASSITANT NEWS EDITOR

High gas prices have caused SIUE's utility bill to rise \$500,000 more than last year's.

According to Bob Washburn, director of facilities management, this year's utility forecast is \$2.73 million. Part of the half-million dollar rise was expected.

"We knew that the addition of the Engineering Building would cause the bill to rise," Washburn said.

University officials thought that the new building would account for a rise of about \$125,000. The extra \$375,000 is due to high gas prices.

"We had no idea that the prices would get so high," Washburn said. "And we don't expect them to fall for a couple of years."

Administration is looking at a few different options for help.

"We have a contingency plan in place to help soften the blow, but we are probably going to have to look elsewhere for funding," Washburn said.

Both the Edwardsville and Carbondale campuses, along with other schools in the state, have requested additional funds from the Illinois Board of Higher Education.

SIU spokesman Scott Kaiser said, "We have requested additional funds totaling 3 percent, or \$321,000, that the board is currently reviewing."

SIUE would receive about \$94,000 of the funds, while Carbondale would get \$227,000.

According to Kaiser, the request must also go through Gov. George Ryan and then on to the General Assembly before a decision is announced Feb. 21. Considering that the request must go through several stages and that many schools are in need of funds, Kaiser said he fears that the additional money, if any, could be less than enough.



# Meet the Senate Week

Come out and meet the members of your Student Government at the following events February 5-9.

These events will feature

*Prizes, Free Stuff, Snacks and Fun for Everyone!*

Monday, 2/5

**Trivia Night**

Prairie Hall Multi-Function Room  
6 pm

Thursday, 2/8

**Free Coffee & Donuts**

Outside Skywalk Cafe  
7 pm-9 pm

Tuesday, 2/6

**Trivia Night**

Cougar Village Commons Building  
6 pm

Friday, 2/9

**Town Hall Meeting with the Senate**

Goshen Lounge  
Open House in Student Government Office  
11 am-1 pm

Wednesday, 2/7

**Free Coffee**

Peck Hall Lobby  
9:30 am-2 pm

Saturday, 2/10

**Information Booth**

Men's Basketball Game vs. UMSL  
7:30 pm



Apply by  
February 10  
for

2001-02 University Scholarships  
2001-02 SIUE Foundation Scholarships

Applications available in the  
Office of Student Financial Aid,  
2308 Rendleman Hall.

[www.finaid.siu.edu](http://www.finaid.siu.edu)

## Sorority wants 'King of Hearts'

MAUREEN HAGRMAN  
NEWS REPORTER

Men representing many organizations have their chance to display their fashion sense and sensitivity in Alpha Phi's King of Hearts event.

The SIUE chapter of Alpha Phi holds the annual male pageant to raise money for the Alpha Phi foundation. The Alpha Phi foundation supports cardiac care for women and children, provides scholarships, helps fund emergency aid and funds a national professor of the year award.

Audience members will judge the contestants, fans can cast a vote upon entry, and additional votes can be purchased. The candidate who receives the most votes will be crowned "Alpha Phi King of Hearts." The King of Hearts then receives a crown, among other prizes.

According to Tammy Drilling, Alpha Phi's director of

philanthropy, contestants are judged in four categories: native wear, which is the clothing from the organization the participants represent; sleepwear; formal wear; and their response to a sensitivity question. The leader of the pageant will be announced after each round.

This year nine contestants are vying for the crown. They represent the SIUE Hockey Club, Greek Council, Sigma Phi Epsilon, Alpha Sigma Tau, Delta Phi Epsilon, Delta Upsilon, Sigma Pi, Alpha Kappa Lambda and Phi Kappa Psi.

The event begins at 9:30 p.m. Friday at the Maryville Knights of Columbus Hall. A dance until 1 a.m. will follow the event.

Drilling said the pageant is a good way for an organization to get its name out and represent itself.

The cost is \$5 to enter with a student identification card, and that buys one vote. Additional votes can be purchased for \$1 each.

## Hearing changed in student felony

ALESTLE STAFF REPORT

A preliminary hearing for Mustafa Cetin has been rescheduled for Feb. 16.

Cetin, an SIUE sophomore, was charged with intentional criminal damage to state-supported property, a felony, Jan. 19. He was held in Madison County Jail and released on \$30,000 bond two days later.

Cetin was scheduled to have a preliminary hearing Friday but instead met with a court-appointed attorney and rescheduled the hearing.

## TICKET

from page 1

The total revenue for Parking Services in fiscal year 2000 was \$1.8 million. According to Vanzo, Parking Services is still in debt because it is repaying \$9 million worth of revenue bonds used for work done on campus grounds.

The increase will take effect in the fall term and Parking Services is expecting protests from students.

"We won't be surprised because it seems like any little

changes made in parking cause a stir," Turner said.

Student government will discuss the increase at one of the next two meetings.

"It depends on how busy we are," Gonterman said.

She said not everyone will have to pay more.

"A higher ticket will only be a problem for people who park illegally."

2001 EXPEDITIONS TO  
**GREECE AND EGYPT**  
MAY 27-JUNE 9 MAY 15-27

TRAVEL EXPERIENCES OF A LIFETIME  
**19TH ANNUAL PROGRAM**  
OPEN TO ALL MEMBERS OF THE COMMUNITY  
FIRST-CLASS AND 5-STAR THROUGHOUT

LED BY A TEAM OF PROFESSORS:  
PHILOSOPHER, ARCHAEOLOGIST,  
EGYPTOLOGIST/CLASSICIST, ART HISTORIAN, ARCHITECT

EACH PROGRAM OFFERS UNIQUE HANDS-ON  
LEARNING EXPERIENCES  
CAN BE TAKEN FOR COLLEGE CREDIT

FOR MORE INFORMATION,  
PLEASE ATTEND ANY ONE OF THESE SLIDE PRESENTATIONS:

- SUN., FEB 4, 4 PM AT WILD OATS COMMUNITY MARKET (LADUE RD. & HWY 170)
- MON., FEB 5, 6 PM AT WILD OATS COMMUNITY MARKET (LADUE RD. & HWY 170)
- TUES., FEB 6, 6 PM, ILLINOIS ROOM, STUDENT CENTER, SIU CARBONDALE
- WED., FEB 7, 7 PM, PECK BLDG, 3117, SIU EDWARDSVILLE
- MON., FEB 12, 7 PM, EDWARDSVILLE PUBLIC LIBRARY

FOR ADDITIONAL INFORMATION CALL 314/721-5645 OR 618/453-7670

PLEASE VISIT OUR WEBSITE:  
[HTTP://WWW.SIU.EDU/~NMC/HAHN/ORIGINS.HTML](http://www.siu.edu/~NMC/HAHN/ORIGINS.HTML)



## EDITORIAL:

EDITOR IN CHIEF:

Brian Wallheimer

MANAGING EDITOR

TOBIE DEPAUW

NEWS EDITOR:

Danielle Stern

ASSISTANT NEWS EDITORS:

Daniel Toberman

Anthony Watt

LIFESTYLES EDITOR:

Brad Brefeld

ASSISTANT LIFESTYLES EDITOR:

Meghan Daugherty

SPORTS EDITOR:

Kumar Bhooshan

ASSISTANT SPORTS EDITOR:

Vacant

CHIEF COPY EDITOR:

Melissa Stein

COPY EDITORS:

Karen M. Johnson

Lindsey Thomason

Christy Schicker

PHOTO EDITOR:

Sheri McWhirter

SUPPLEMENTAL SECTIONS

EDITORS:

Elizabeth Grimsley

Maureen Hargman

## GRAPHICS/PRODUCTION:

GRAPHICS ASSISTANTS:

Jennifer A. Green

Andrew Lehman

WEBMASTER:

Rakesh Kumar Varganti

## ADVERTISING:

Nicole Humphreys

## CIRCULATION:

Scott Garkie

Rakesh Kumar Varganti

## ALESTLE ADVISER:

MIKE MONTGOMERY

GRAPHICS SUPERVISOR:

MIKE GENOVESE

OFFICE MANAGER:

MARY ALLISON

THE FIRST COPY OF EACH  
ALESTLE IS FREE OF CHARGE.  
EACH ADDITIONAL COPY COSTS  
25 CENTS.

## LETTERS TO THE EDITOR POLICY:

The editors, staff and publishers of the Alestle believe in the free exchange of ideas, concerns and opinions and will publish as many letters to the editor as possible. Letters may be turned in at the Alestle office located in the Morris University Center, Room 2022 or via e-mail at [alestle\\_editor@hotmail.com](mailto:alestle_editor@hotmail.com). All hard copy letters should be typed and double-spaced. All letters should be no longer than 500 words. Please include your phone number, signature (or name, if using e-mail) and student identification number.

We reserve the right to edit letters for grammar and content. However, great care will be taken to ensure that the message of the letter is not lost or altered.

Letters to the editor will not be printed anonymously except under extreme circumstances.

The Alestle is a member of the Illinois College Press Association, the Associated Collegiate Press and UWIRE.

The name Alestle is an acronym derived from the names of the three campus locations of SIUE: Alton, East St. Louis and Edwardsville.

The Alestle is published on Tuesdays and Thursdays during fall and spring semesters, and on Wednesdays during summer semesters. For more information, call (618) 650-3528.

## Have a comment?

Let us know!

Send us an e-mail:

[alestle\\_editor@hotmail.com](mailto:alestle_editor@hotmail.com)

The Alestle

Campus Box 1167

Edwardsville, Ill. 62026-1167

# News isn't always the good stuff



This is a newspaper.

I just wanted to make that clear. You see, a lot of people have criticized two of our stories lately.

I'm speaking of the stories about Mustafa Cetin, the basketball player who has been charged with a felony, and Jason Olszowka, the cross country runner who was hit in the head with a beer bottle. Many students have asked why the Alestle had to

run these stories. I can tell you: Those stories are news and we run news in our paper.

Cetin has admitted he punched a hole in the wall of an apartment building at Cougar Village. He was arrested and charged with a felony. He told me in an interview that he punched the hole in the wall. I'm sure he doesn't want his name and picture to be on the front page of the newspaper, but he put himself in a situation that warranted the front page of the newspaper.

The fact of the matter is Cetin faces a felony charge. I might not agree with filing a felony charge for punching a wall, but I also don't think people should be pulled over for speeding if they are only driving a few miles per hour over the limit. The point is, the law is the law and Cetin broke it. That's what makes his story newsworthy.

Olszowka is another story. He was hit with a beer bottle and someone will be charged with aggravated battery for that. Olszowka didn't do anything wrong, to my knowledge, and no one ever said he did. I'm sorry if he doesn't want his picture in the paper, but it is news.

My point is that we have to cover these types of stories in our newspaper. When athletes are battered or taken to jail, it has to go in our newspaper. It might not seem fair to someone that we put their picture on the front page, but if they didn't want to be on the front page, they shouldn't have put themselves in that position.

I wouldn't be doing my job if I didn't report all the news that I know about. The Alestle is here to inform our readers about what is going on at SIUE. Leaving out stories about Cetin and Olszowka would be negligent on my part. Just because someone might not like the story doesn't mean that it shouldn't be in the paper.

I'm not trying to make enemies with what I'm saying or with the stories that run in the paper. I'm simply doing my job. Don't kill the messenger. I may be the bearer of bad news to some people, but I didn't create the bad news. I'm just telling you about it.

Before Cetin was on the front page for being charged with a felony, he was in the sports section all the time for his contributions to the basketball team. I don't recall anyone complaining about his being in the news then.

News is news, whether it is good or bad. We report both kinds. Unfortunately for Cetin, recent stories about him have been bad. But that doesn't make them any less important.

Be critical of the Alestle. It keeps us all on our toes over here. But before you complain, think about what you are saying. The Alestle would be pretty boring if we only ran the good stuff.

Brian Wallheimer  
Editor in Chief

## Letters to the Editor

Dear Editor:

Recently a student was charged with a felony for busting a hole in a wall. A judge set bail at what seemed to be an excessive amount. All this was reported in this paper, and there were no editorials about it.

I thought for sure there would be someone willing to voice an opinion on it. Maybe this area of the paper should be called the editors chat room. Writing a letter to the editor must be taboo or we just don't care about or freedom and our Constitution. Hey, how about some extra credit to get students to write editorials?

I do not know any more about the situation above than what was reported in the paper. Let's take the readers and put them in this type of a situation. You are angry for some reason, you bust a hole in the wall of a state building and you get charged with a felony. You are not a real threat to society, but you can be charged with a felony and given an amount of bail that is probably higher than the cost to repair the wall. Is this unconstitutional?

Assuming most students have recently studied the United States and Illinois constitutions to get to the college level, this should be fresh in their minds. Are your rights under the constitution violated?

Do you know what it means to have a felony conviction?

I would like to see the Alestle run an informational series informing students about a felony conviction, how it can affect your life forever, and what type of stupid things (that should be

misdeemeanors) that you can be arrested for and charged with a felony.

Who is to blame for this loss of our rights? We are, the older generation. We allowed lawmakers to make laws that infringe upon the rights of the people. We did not care enough to write an editorial. We did not care enough to speak to our legislators. You are the next group of leaders and voters. If you do not voice your opinion you will also share the blame.

As I remember, the sentiment was that these new tough laws will stop crime. It did not work and can make you a felon for a small mistake. Let me make it perfectly clear that true criminals should be dealt with, however a misdemeanor mistake should not make you a felon.

Personally, I think the lawmakers should repeal at least 10 old obsolete and/or redundant laws before they can pass one new one. That might be the true definition of gridlock.

Marion McVey

**Ed. note:** Mustafa Cetin was charged with intentional criminal damage to state-supported property, which is a class-four felony. Cetin's bond was set at \$30,000 of which he only had to post 10 percent. The Madison County Circuit Clerk's office assured the Alestle that \$30,000 bond is a normal amount to be levied for such a crime.

## Sound-off line operational

If you've ever wanted to write a letter to the editor but couldn't find a pen and paper, the Alestle has another option for you.

The Alestle sound-off line is operational and waiting for calls.

Similar to sound-off lines at other newspapers, the Alestle's comment line is there 24 hours a day, seven days a week waiting for you to call and sound off. The number is 841001 from any campus phone.

All calls are anonymous, regardless of any identification given.

However, because calls are anonymous, the Alestle reserves the right to edit all comments.

At the end of each day, all comments will be transcribed and printed in a sound-off section in the next edition of the Alestle on the editorial page.

So, if you don't want to write a letter to the editor, feel free to call and sound off.

We're waiting to hear from you.

Got a problem on campus?  
Can't seem to get an answer  
to your questions?  
Getting the runaround?  
Contact the Alestle!

If you can't get answers or solutions to  
your questions, let the Alestle know.  
If there's a story, we'll investigate and  
find out what's wrong.  
E-mail us or write us.



# Lifestyles

PEOPLE, ENTERTAINMENT &amp; COMICS

## Students awarded in the annual SIUE Undergraduate Art Exhibition

MELINDA HAWKINS  
LIFESTYLES STRINGER

Hard work and dedication are on display in the Annual Undergraduate Art Exhibition.

The exhibition includes 61 undergraduate works chosen by juror and Executive Director of the San Jose Museum of Art Daniel T. Keegan.

"The 61 works in this student exhibition are fine examples of the ideas, attitudes and techniques alive in contemporary art," Keegan said. "They demonstrate an exceptional mastery of the challenges put forth by a highly qualified faculty. However, the very best works in this exhibition transcend the exercises to become super-charged statements, loaded with potential for discovery."

Rebecca Eilering, a senior working toward her bachelor of fine arts degree, won the highest award in the show. Eilering won the \$500 Friends of Art Purchase Award for her labor-intensive work.

"It's a weird feeling, winning this award and it hasn't quite hit me yet, but I'm very excited about it. Four years of obsessive work have finally paid off," Eilering said.

"I explore the relationship of how people relate to architecture and architecture relates to people," Eilering said.

Nathan Murrell, Jeff Harris and Thom Ward won Friends of Art Purchase awards,

Brenda Elfgen won the John and Kay Kendall Award, Jonathan Bloomer won the Rose Marie Sacchi Award and Shante Schuler won the Wagner Potter's Association Award.

Murrell is a senior seeking a bachelor of fine arts degree and won the Friends of Art Award. "In my work I try to tell a story," Murrell said. "This can be a narrative in the traditional sense from beginning to end, or an emotional story about feeling, or how I felt at a certain moment in time."

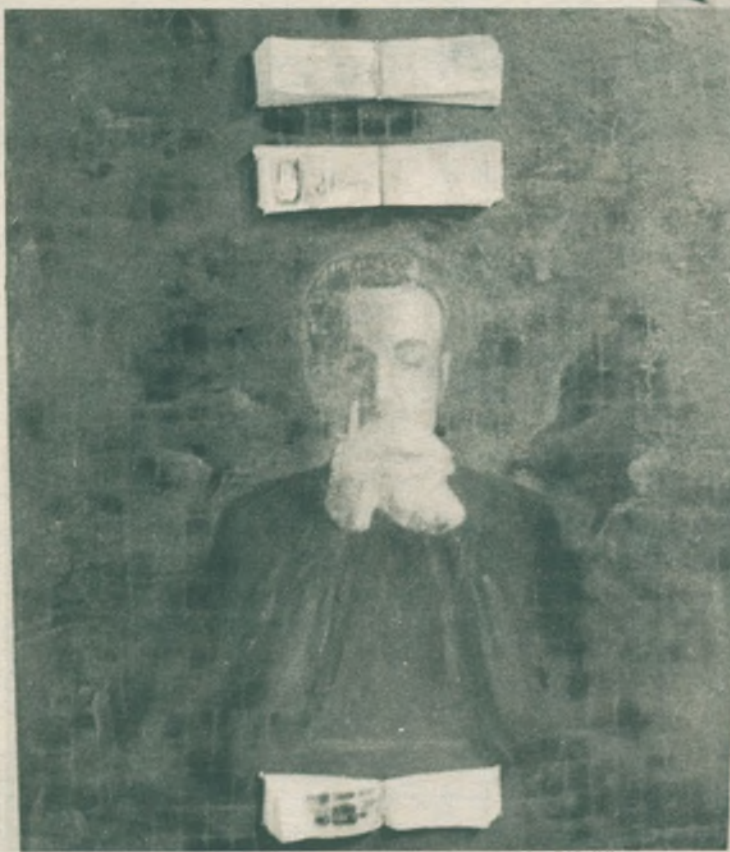
Elfgen has won awards for her second year in a row in the Undergraduate Art Exhibition. "Art isn't therapy for me. I just want viewers to enjoy my work. They can bring whatever they

see ART, page 5



SHERI MCWHIRTER/ALESTLE

"Transit" by Warren Berry II, digital image.



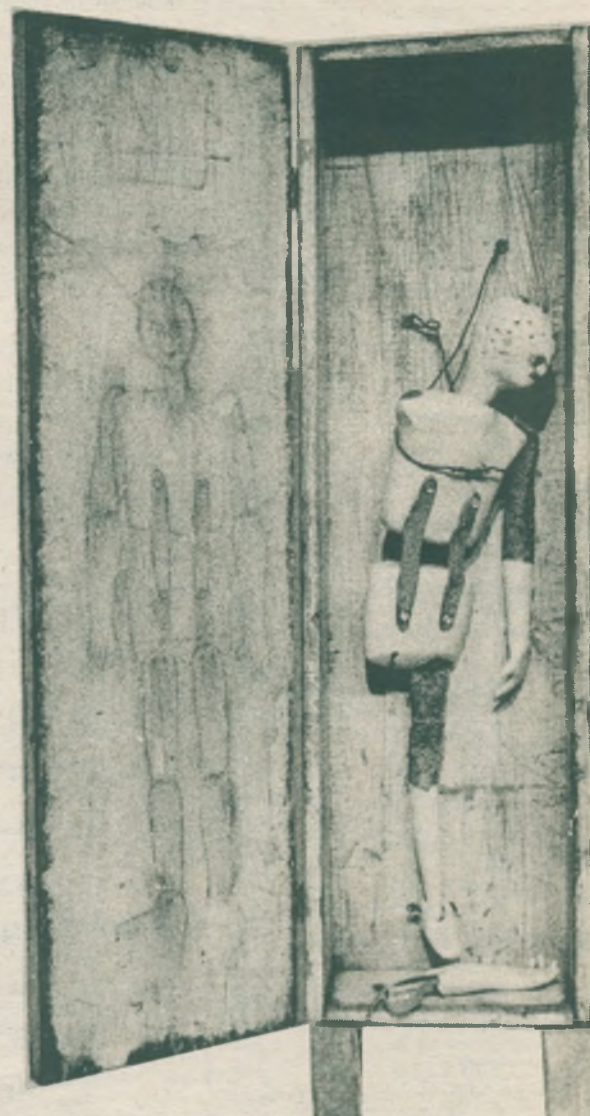
SHERI MCWHIRTER/ALESTLE

"Quiet or the Others Will Hear" by Thom Ward, oil on panel and altered book.



SHERI MCWHIRTER/ALESTLE

"Life Bowl #1" and "Life Bowl #2" by Mary Levi, copper and silver.



SHERI MCWHIRTER/ALESTLE

"Mirror" by Thom Ward, mixed media.



### Quote of the day...

"I think animal testing is a terrible idea; they get all nervous and give the wrong answers."

-Unknown

## ART

from page 4

want to the interpretation," Elfgren said.

Many of the participants expressed a desire to see more SIUE students supporting the art department.

Bloomer is a junior whose work was accepted into the exhibition for the first time this year. "I think it's interesting to come to the art department and see what it is like," Bloomer said. "We have a really nice community here, and I don't think many students understand that."

"There's lots of diverse and excellent artwork coming out of this department," Elfgren said. "I find it frustrating that the majority of the student body doesn't come over here. I think people should take a whopping 10 minutes out of their day and come see this show."

Eilering also commented on the need for support from the student body. "I know it's hard to convince people to come over here with their busy lives, but the work here is representative of a really great art department," she said.

The Annual Undergraduate Art Exhibition will be on display until Thursday, Feb. 15, in the New Wagner Art Gallery in the Art and Design Building.

"As an instructor in the art department, I am often under the misguided impression I have seen it all," said Michael Joslyn, a drawing instructor in the art department. "This show has once again surprised me with the unexpected diversity this program creates in its undergraduate students. I would like to encourage everyone to come see this show."

### WELLNESS WEEK FEB. 11-16

Feb. 11 - Spiritual Day  
Connect with your spirit

Feb. 12 - Intellectual Day  
Games in Peck

Feb. 13 - Emotional Day  
Love Fest/HIV Testing

Feb. 14 - Social Day  
Socialize with free ice cream

Feb. 15 - Occupational Day  
Relax with a free massage

Feb. 16 - Physical Day  
Valentine's Fitness Day

For more information contact  
the Wellness Center at  
650-3873 or wellness@siue.edu

## Say What?

BETH KRUZAN  
PHOTO STRINGER

Question: What do you think of today's pop music like Britney Spears and \*NSYNC?

"I love \*NSYNC's dance moves. I don't like Britney, though, because she can't sing."

Danielle Regan  
Sophomore, Nursing Major



"I think that their music is purely fun music. It is not supposed to be highly analytical or moving music, like other musicians. I love Britney, but she doesn't make any of my life decisions."

Jaycie Carlson  
Junior, Special Education Major



"I don't mind Britney as long as my 7-year-old sister doesn't dress like her."

Lacey Randant  
Sophomore, Nursing Major



"I love \*NSYNC - they look good."

Marquis Lewis  
Sophomore, Computer  
Management Information  
Systems Major



"I don't like Britney, but I love \*NSYNC. I like them because of the music and the way they dance."

Ouida Smith  
Sophomore, Nursing Major



# Left Coast

# Right Job

Bring your teaching degree to

## California



In California you'll have more choices for school locations, teaching environments, climate, sports, entertainment and places to live than in any other state. And you'll be welcomed with open arms and minds eager to learn. We need you here. To learn how easy it is to get here, call toll-free 1-888-CalTeach or visit our website at [www.calteach.com](http://www.calteach.com).

- Competitive starting salaries and benefits
- Smaller class sizes in schools statewide
- Housing and cost of living incentives
- Strong community support for teachers
- Beautiful and diverse climate and scenery



## CalTeach

Left Coast. Right Job.™



## Today in sports history

On this day in 1990, St. Louis Blues' Brett Hull and his father, Hall of Famer Bobby Hull, became the only father-son combination in National Hockey League history to reach the milestone of 50 goals in a season.

# Sports

**WRESTLING TO HAVE MATCH ON FRIDAY**  
On Friday, SIUE will be host to Northern Illinois University and Lindenwood College at 7 p.m. in the Vadalabene Center. This will be SIUE's final home meet of the season.

## Basketball-Hockey-Track- Wrestling

◆ Page 6

The A l e s t l e

TUESDAY, FEBRUARY 6, 2001◆

# IUPU-Fort Wayne snaps Lady Cougar streak

SIUE falls to IUPU-Fort Wayne for the second time this year, Win over St. Joseph's starts new streak

KUMAR BHOOSHAN  
SPORTS EDITOR

The Great Lakes Valley Conference finally found an answer to stop the streaking Lady Cougars.

The Mastodons of Indiana University Purdue University-Fort Wayne snapped the Lady Cougars' eight-game winning streak Thursday.

The Lady Cougars came in hoping to avenge a 76-72 loss IUPU-Fort Wayne handed them earlier in the year. History repeated itself and the Mastodons caged the Lady Cougars 68-56.

The last time these teams met, IUPU-Fort Wayne's Trish Fleming poured in 32 points to lead her team to victory.

This game, the Lady Cougars had an answer for Fleming but hadn't counted on her teammate Jamie Holderman recording a team-high 32 points and grabbing three rebounds. Holderman and Fleming were the only Mastodons who recorded double figures. Amy Gearlds finished the night with seven

points.

The game pace was set early by the Mastodons who came out firing and went into halftime with a confident 10-point lead.

Crystal Gladson and Misi Clark led the Lady Cougars, each totaling 12 points. Playing in all 40 minutes, Clark finished the night with six rebounds and three assists. Gladson totaled three rebounds, one blocked shot and one steal. Jill Johnson started in her third consecutive game and grabbed a game-high 10 rebounds and scored seven points.

Neither team shot more than 43 percent from the field and neither shot more than 65 percent from the free-throw line.

Playing the deciding role in the game were the 22 turnovers the Lady Cougars committed, a reasonable number, unless it's compared to the Mastodons only committed 13.

The Lady Cougars started from scratch Saturday and began a new conference streak.

SIUE traveled to St. Joseph's College to play the cellar-

dwelling Lady Pumas, who are now 1-12 in the GLVC and a dismal 1-18 overall. On paper the conference matchup should have been a sure Lady Cougar victory, but games aren't played on paper. In a close 66-63 game, the Lady Cougars were able to hold off the struggling Lady Pumas.

The Lady Cougars scored consistently, recording five players in double digits. Clark put her double-digit scoring streak in jeopardy but converted on two clutch free throws at the end of the game to put SIUE over the top and move her streak to 86 consecutive games.

St. Joseph's Heather Allen finished the night with a double-double, recording 32 points and 10 rebounds. Guard Erin Sampsel was the only other Lady Puma to finish in double figures, recording 11 points and pulling down six rebounds.

The Lady Cougars will try to start a newwin streak at home at 5:30 p.m. Thursday when they play host to Quincy University in the Vadalabene Center.



PHOTO COURTESY/ PHOTO SERVICES

Liz DeShalser has averaged three points per game for Wendy Hedberg

## Struggling SIUE shows signs of improvement in Indiana

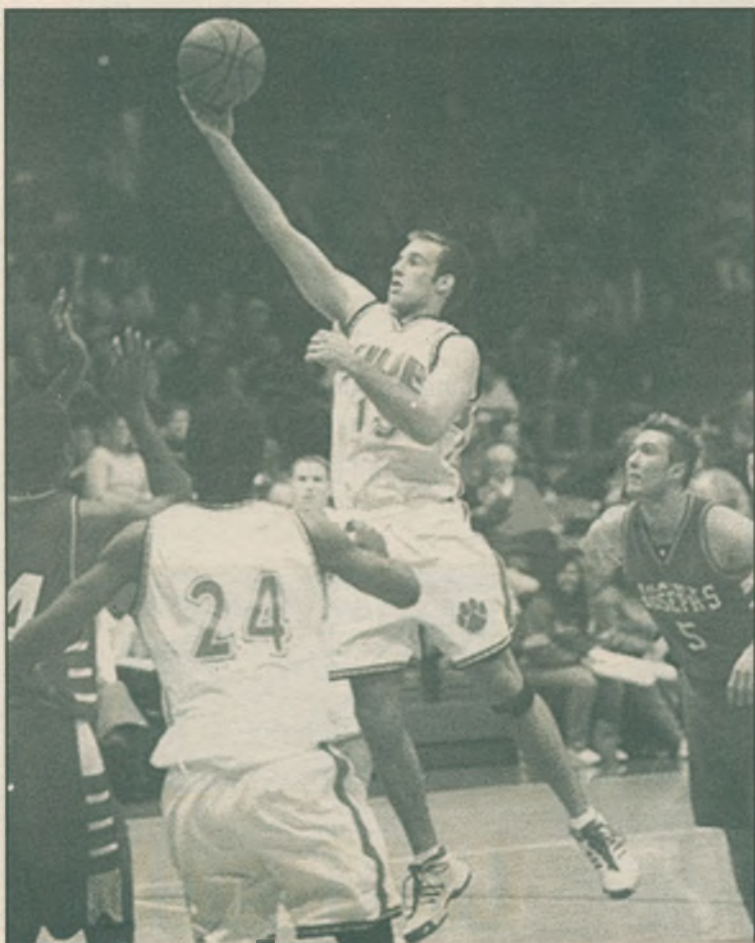


PHOTO COURTESY/PHOTO SERVICES

Wes Pickering averaged 10 points per game before an injury early on.

Keli Keener  
Sports Stringer

The men's basketball team was faced with two tough loses in conference action week against Indiana University Purdue University-Fort Wayne and St. Joseph's College.

The Cougars extended their losing streak to 10 games despite a couple of strong outings by junior forward Marty Perry.

Perry recorded a game-high 21 points in SIUE's 81-66 loss to IUPU-Fort Wayne Thursday. Also scoring in double figures were Garrett Thomas with 13 points and Nick Hartwig with 12.

The Cougars were outscored and went into the locker room at halftime trailing 42-28. SIUE shot 43.1 percent from the field, 27.3 percent from the three-point range and 58.8 percent from the free-throw line.

Junior guard Brad Noll led the Mastodons with 19 points followed by four other players in

double figures. IUPU-Fort Wayne shot well in both halves from the field, finishing at 57.9 percent. The Mastodons finished 9-12 from the charity line.

IUPU-Fort Wayne improved to 7-15 overall and 4-8 in the Great Lakes Valley Conference.

Earlier this season, when the Cougars had a full roster, they beat the Mastodons 77-72. Luke Humphrey led the team with 19 points in that game.

Marty Perry surpassed his previous showing with a career-high 32 points Saturday afternoon in Rensselaer, Ind., but it was once again not enough as SIUE fell to St. Joseph's 83-81.

The Cougars were down only five at the end of the first half and outscored St. Joseph's 46-43 in the second half.

SIUE shot a notable 75 percent from the charity line. Converting on just a few more free throws could have made the game.

Thomas scored 14 points,

including four three-pointers, and Humphrey added 11 points.

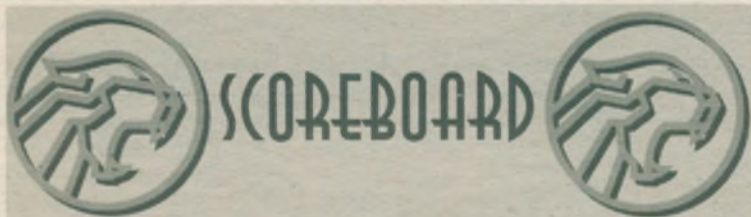
Junior forward Brent Mason, who is averaging 19 points per game and was last week's GLVC Player of the Week, led five Pumas in double figures with his 18 points. St. Joseph's shot 52.7 percent from the field and 71.4 percent from the free-throw line.

The Cougars lost to the Mastodons earlier this season 77-65. Wes Pickering, who is on the disabled list after having knee surgery, scored 21 points in that game.

SIUE is now 4-15 overall and 1-12 in the GLVC. With the win, St. Joseph's improved to 12-10 overall and 6-7 in the GLVC. The Pumas are in the fifth spot in conference standings.

The Cougars return from their four-game coercion on the road to prepare for a three-game stint at home starting Thursday when they play host to Quincy University. Game time is set for 7:30 p.m. in the Vadalabene Center.





## MEN'S BASKETBALL LEADERS

NAME	POINTS	PPG
1. Marty Perry		15.0
2. Garret Thomas		11.0
3. Luke Humphrey		8.6
4. Nick Hartwig		8.1

NAME	REBOUNDS	RPG
1. Nick Hartwig		6.1
2. Marty Perry		5.5
3. Wes Pickering		5.1
4. Garret Thomas		2.4

# Most of Us

## 63% are making healthy choices

Most SIUE students drink 0-3 drinks per week.  
(1,032 STUDENTS SURVEYED)

1 DRINK= 12 OZ. BEER, 5 OZ. WINE, 1 OZ. LIQUOR REFERENCE: CORE ALCOHOL AND DRUG SURVEY, SIUE, APRIL 2000  
For More Information Contact: THE SIUE WELLNESS CENTER (618) 650-3873 wellness@siue.edu

SIUE SOUTHERN ILLINOIS UNIVERSITY EDWARDSVILLE

## Hollywood ★ Tan

### First Visit Free

We honor competitor's coupons

Troy 667-4140 or Glen Carbon 656-TANN (8266)

## CELEBRATE THE CULTURAL DIASPORA

### AFRICAN AMERICAN HISTORY MONTH

February is African American History Month, and we're offering you a variety of books to choose from, covering topics such as: RACE RELATIONS, HISTORY, THE ARTS, LITERATURE, and POLITICS.

Morris University Center Bookstore  
(618)650-2132

**VISIT US TODAY!**

### Immunization Records Due Now

in Health Service  
Rendleman, Room 0214  
Failure to comply with this state requirement will result in a hold on your registration and/or class cancellation

### Valentine's Fitness Day

February 16 10 am-4 pm  
at the Student Fitness Center

**FREE Screenings:**

- ♥ Blood Pressure
- ♥ Body Composition
- ♥ Cardiovascular Fitness
- ♥ Cholesterol & Blood Glucose\*
- ♥ Muscular Strength
- ♥ Flexibility
- ♥ Lung Function

\*Individuals wishing to have their cholesterol and blood glucose measured must arrive no later than 3:30 pm.

An explanation of your results & recommendations for improvements will be provided.

Workout attire is recommended.

All students, faculty, staff and Student Fitness Members welcome!

Brought to you by the SIUE Wellness Program, Eta Sigma Gamma, Campus Recreation, the Department of Kinesiology and Health Education, the School of Nursing, Student Government and Alton Memorial Hospital.

For more information call 650-BWEL

### Free Throw Contest

Registration Due: at the event  
Event Begins Feb 12-13  
Begin Time 4 pm-5:30 pm  
Location: SFC Gym  
Division: Men/Women  
Cost: Totally Free

For further information contact  
Chad Rodgers at 650-3242

### Lifeguard Training Course

March 25-April 29  
Saturdays 10 am-3 pm • Sundays 12 pm-4 pm  
Register at the Student Fitness Center by March 19  
Students \$80 • Non-Students \$110

SIUE Wellness Program • Campus Recreation, Student Affairs • 650-B-FIT

# CAMPUS RECREATION

Look us up on the NET at <http://www.siue.edu/CREC> • Campus Recreation, Student Affairs



# Classifieds

◆ PAGE 8

A l e s t l e

TUESDAY, FEBRUARY 6, 2001 ◆

## HELP WANTED

**Part time phone work** Tuesday, Wednesday, Thursday & Saturday. APX 10-15 hours/week. Resume to P.O. Box 702 Collinsville, IL 62234 2/6/01

**Part time help wanted:** Gen. Apartment Maintenance Collinsville/Edwardsville. Must have car and tools. Flexible hours start \$10/hr. List skills. Send to P.O. Box 702 Collinsville, IL 62234. 2/6/01

**Absolutely Free Info!!** Internet users wanted. \$2000 - \$5000/month. www.stay-home-profit.com 2/27/01

**Have a good family health history,** then you may qualify. \$2500 stipend. Call (800) 780-7437. All ethnicities welcome. Help a couple go from infertility to family 4/5/01

**Egg donors needed.** You can make a difference and help an infertile couple reach their dream of becoming parents. If you are between the ages of 21 and 33, and have a good family history, then you may qualify. \$2500 stipend. Call (800) 780-7437. All ethnicities welcome. Help a couple go from infertility to family. 4/5/01

**Male tutor wanted for high school junior.** Help needed in Algebra and English. Call 656-1739 after 7p.m. Leave number on answering machine. Will return call. 2/13/01

## PERSONALS

A♠ King of Hearts Pageant and Dance. Friday, February 9th at 9:30. Come see the beautiful men on campus at the Maryville KC Hall! 2/6/01

**Like Pizza?** Say Haiti! Order or go to Pizza Hut Monday, February 12. Say Haiti and 20% of all proceeds go to the Haiti Connection 2/6/01

To the women of Delta Sigma Sorority Inc: I think your organization is outstanding due to its originality, unlike others. 2/6/01

## FOR SALE

'87 Volkswagon Fox 4 door, AC, cruise, 5 speed. 59,000 miles. \$2,400 obo. Call (618) 980-0465 2/6/01

**Used books at bargain prices.** Good Buy Bookshop, Lovejoy Library Room 0012. Wednesdays & Thursdays 11 a.m. to 3 p.m. Sponsored by Friends of Lovejoy Library. 4/26/01

**Phone Card Sale** India Pakistan 32 min. \$10.00. Long distance 5 cents/min. no connection Akbar Grocery (314) 428-1900. 4/12/01

'87 Nissan Maxima, black, new brakes and tires, 200,xxx, \$1,000.00 obo, call 558-3809 or alidainc@yahoo.com. 2/6/01

## MISCELLANEOUS

**#1 Spring Break Vacations!** Best prices guaranteed! Cancun, Jamaica, Bahamas, Florida. Free drink parties, so much more! Group rates still available! 1-800-234-7007 endlesssummertours.com 3/1/01

**YOUR DESTINY LIES WITHIN THE ALESTLE**



**BEACH & SKI TRIPS SPRING BREAK**  
www.sunchase.com  
1-800-SUNCHASE

## the Alestle PLACING A CLASSIFIED AD

### Frequency Rates

(Five (5) words equal one line)

All classifieds and personals must be paid in full prior to publication.

1 run: \$1.00/line 5 runs: \$.90/line  
(2 line minimum) 20 runs: \$.85/line  
3 runs: \$.95/line Personals: \$.50

### Deadlines

Tuesday Publication: Noon Friday  
Thursday Publication: Noon Tuesday

### Adjustments

Read your ad on the first day it appears. If you cannot find your ad or discover an error in your ad, call 650-3528 or come into the office. Positively no allowance made for errors after the first insertion of advertisement. No allowance of correction will be made without a receipt.

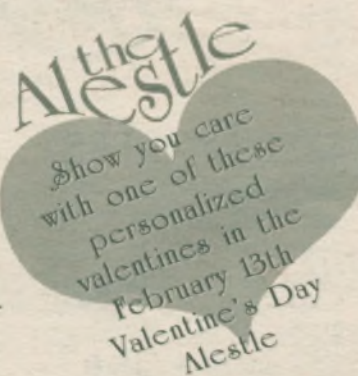
### Placing Ads

To place a classified ad, come to the Office of Student Publications, located in the UC, Rm. 2022, and fill out a classifieds form.

### Alestle Office Hours:

Monday thru Friday: 8am - 4:30pm  
650-3528

Personalize it in ...



Send someone special a message telling them what you think. Just fill out the form and choose the format you want printed and your personal will appear in the Valentine's Day Alestle. Forms are available in the Alestle office.

**Deadline is Noon, Friday February 9th.**

 <p><b>\$6.00</b> 16 lines</p>	 <p><b>\$3.50</b> 7 lines</p>	 <p><b>\$4.50</b> 14 lines</p>
 <p><b>\$3.50</b> 7 lines</p>	 <p><b>\$4.50</b> 14 lines</p>	 <p><b>\$4.50</b> 14 lines</p>

## SUNDAZZLERS TANNING 656-UTAN (8826)

**7 tans for \$21**



## HOLLYWOOD NITE'S

377-4653 Rt. 140 Bethalto

**Sun:** 24oz Big Boys \$2.25

**Mon:** 50¢ Draft • **Tues:** \$2.00 Jack & Cokes

**Wed:** \$1.50 Bottles + Karaoke plus DJ

**Thur:** Free Hot Wings ('til gone)

**\$2.50 Big Boys - DJ and Dance Music**

**Fri & Sat:** In-House DJ

Playing dance music on

area's largest dance floor w/ lite effects!

4 TVs + a Big Screen • 3 Pool Tables-Darts-Foosball

Large, well-lit parking lot

*Room to have fun!*

Must have proof over 21



**Westgate**

Apartments & Townhomes

10 minutes from SIUE!



## ASK ABOUT OUR COLLEGE SPECIAL

2 Bedroom Townhomes  
(with W/D hook-ups)

1 & 2 Bedroom  
Garden Apartments

Laundry Facilities Available • Some Utilities Included

Call For Prices & Availability

**(618) 931-0107**



**Domino's Pizza**  
**692-1515**

**"Got the Munchies?  
We've Got the Solution!"**

**2 Large 1 Topping Pizzas**  
**\$12.<sup>99</sup>**

Deep Dish \$1 Extra per Pizza

Coupon must be presented. Offer expires ###/###/##.

Not valid with any other offer. Drivers carry less than \$20

**2 Medium  
1 Topping  
Pizzas**

**\$10.<sup>99</sup>**

Deep Dish \$1 Extra per Pizza

Coupon must be presented.

Offer expires ###/###/##.

Not valid with any other offer.

Drivers carry less than \$20

**Late Night Special**  
**1 Medium 2 Topping  
Pizza, 2 20oz Pepsi's  
& Cheesybread**

**\$9.<sup>99</sup>**

Deep Dish \$1 Extra per Pizza

Coupon must be presented.

Offer expires ###/###/##.

Not valid with any other offer.

Drivers carry less than \$20