

**Lady Coagars  
travel to Indiana  
this weekend.  
See Sports.**

# Overweight plates shortchange students

ELIZABETH GRIMSLEY  
NEWS REPORTER

Food Service officials ordered an investigation Wednesday to ensure that students will no longer be inconsistently charged for meals from the "Hot Stuff" food line and the salad bar.

Last year Food Service raised the prices of the "Hot Stuff" bar to 28 cents per ounce and the salad bar to 22 cents per ounce with the understanding that students would not also be charged for the weight of a plate.

However, an Alestle investigation conducted with William Canney, assistant

director of Food Service, revealed that students may be charged as much as 52 cents for the plate alone.

Canney said the inconsistency is not intentional, rather it is due to variations in the weight of plates.

"It's a uniform plate as far as what they use," Canney said. "We were trying to be as fair as possible."

When a plate of food is weighed at the cash register, the weight should automatically be deducted from the total cost, Canney said. A separate button on the cash register is used to distinguish between a plate and a Styrofoam container.

Before actually weighing plates with Alestle staffers, Canney had said that while plate weights might not be uniform, he believed the difference should be less than 5 cents.

Of 22 empty plates weighed during the investigation, 11 rang up as zero cost, while the other 11 ranged in price from 10 cents to 52 cents.

Both Canney and Food Service manager Virginia Moran originally attributed the cost differences to the fact that the plates were empty. They contended that empty plates set on the scales might give false readings.

However, a plate that showed



SHERI MCWHIRTER/ALESTLE  
**How much is this plate costing you? An Alestle investigation found many plates carry their own charges.**

zero on the scale was weighed with a 1.69-ounce candy bar and rang up as 38 cents, but should

have shown a cost of 47 cents.

see PLATES, page 2

## Celebrate black culture

ELIZABETH GRIMSLEY  
NEWS REPORTER

The Black Heritage Month Planning Committee will sponsor a series of events in February in recognition of Black Heritage Month with the theme "One World: Embracing the Dream."

The committee is chaired by Darron Cannon, associate director of human resources, and is made up of students, faculty and staff interested in promoting Black Heritage Month.

The events planned will incorporate music, art, literature and dance to highlight both SIUE students and historical figures in African culture.

An art exhibit titled "Watau," which means "trio," in the Morris University Center Gallery will run through Wednesday, Feb. 28. The exhibit features work by Adelia Parker, Edna Patterson-Petty and Seitu James Smith.

The gallery will be open from 9 a.m. to 4:30 p.m. Monday through Friday and 1 to 4:30 p.m. Saturday and Sunday.

Another event open to

students is a Cultural Bazaar and Marketplace. Director of the Kimmel Leadership Center Steve Sperotto said vendors will be selling art and craft items 10 a.m. to 6 p.m. Friday and Saturday in the MUC.

All SIUE students are also encouraged to take part in a talent show Wednesday, Feb. 14. Those wishing to enter the show may contact Earleen Patterson, program director of special services.

The crowning event of the month will be Africa Night at 6:30 p.m. Saturday, Feb. 24, in the Conference Center on the second floor of the MUC. Tickets are \$6 for students, \$8 for faculty and staff, and \$10 for the public.

Africa Night will feature guest speaker Andre Kapanga, ambassador to the United Nations for the Democratic Republic of the Congo, as well as a native costume and art presentation.

Many more events will run during the month. For more information and a complete listing of events, contact the Kimmel Leadership Center at 650-2686.



BETH KRUZAN/ALESTLE  
**SIUE President James Walker answers questions Wednesday in the Meridian Ballroom.**

ANTHONY WATT  
DANIEL TOBERMAN  
ASSISTANT NEWS EDITORS

The SIUE community has spoken.

Some 200 faculty, staff and students were on hand as audience members addressed the university's strengths and weaknesses in a forum session with SIUE President James Walker

## SIUE voices concerns to President Walker

Wednesday.

Walker wanted to know the community's opinions on the strong points and shortfalls and how the university should be perceived in the future.

"I could lock myself in a room and come up with a plan," Walker said in the Meridian Ballroom of the Morris University Center, "but I think listening to you would be a better idea."

The comments and concerns included how prepared students are to handle their class load.

Jaime Reed, an academic adviser in Academic Counseling and Advising, said the university has underprepared students because the university lacks the tutoring services, mentoring services and developmental classes these students need.

"Sometimes I feel like I'm setting these students up for failure," she said.

"We also need to help the

students on probation," she continued, "so they don't move on to the next step, which is suspension."

Kay Uhles and Pat Goldsbury are nontraditional students pursuing degrees in speech communication. They were concerned with the services available to nontraditional students.

"Nontraditionals aren't represented at the university," Goldsbury said. "Thirty-five percent of the student population is nontraditional. Our vision is to have a nontraditional lounge and a Web page on the university Web site that deal with nontraditional students' needs and the services available to them."

Some students suggested that facilities such as the library and computer labs should be open 24 hours to accommodate the increasing residential population.

see WALKER, page 2

## State committee wants to hear from students on university issues

PETE STUMP  
NEWS STRINGER

The Illinois Board of Higher Education - Student Advisory Committee is meeting at SIUE for the first time in more than three years. There will be two sessions to discuss various topics introduced to the board.

The meetings will be at 2 p.m. Saturday and at 10 a.m. Sunday in the Conference Center

on the second floor of the Morris University Center. A dinner will follow each meeting.

The committee, which is made of delegates from every college and university in the state, is comprised of three sectors acting as one.

Delegates from private schools, public community colleges and public universities attend separate meetings, then combine their concerns during

six subcommittees to give the IBHE a list of campus concerns.

The board then advises the governor and state legislature on different aspects of the statewide university system, including the distribution of state funds and passage of laws that affect students in the state.

The six subcommittees are academic affairs, access and diversity, alumni affairs, budget, nonacademic and public

information.

Jeff Twardowski, a student senator for SIUE, is the chairman for the public university sector.

He said the major issues on the agenda are a student fee report, defining the job description for the newly formed Webmaster position and forming a committee to look into campus crime.

The student fee report, which was introduced in October by

former IBHE Chairperson Jeff Norman of the University of Illinois-Champaign, cites how student fees statewide have increased at four times the rate of inflation. It also points out how there is no clear definition of "student fees."

Both meetings are open to the public, although attendees not directly involved with the committees will have to pay for their own food.



# Apply by February 10 for

2001-02 University Scholarships  
2001-02 SIUE Foundation Scholarships

Applications available in the  
Office of Student Financial Aid,  
2308 Rendleman Hall.

[www.finaid.siu.edu](http://www.finaid.siu.edu)

## Meet the Senate Week

Come out and meet the members of your Student Government  
at the following events February 5-9.

These events will feature

*Prizes, Free Stuff, Snacks and Fun for Everyone!*

Monday, 2/5

### Trivia Night

Prairie Hall Multi-Function Room  
6 pm

Thursday, 2/8

### Free Coffee & Donuts

Outside Skywalk Cafe  
7 pm-9 pm

Tuesday, 2/6

### Trivia Night

Cougar Village Commons Building  
6 pm

Friday, 2/9

### Town Hall Meeting with the Senate

Goshen Lounge  
Open House in Student Government Office  
11 am-1 pm

Wednesday, 2/7

### Free Coffee

Peck Hall Lobby  
9:30 am-2 pm

Saturday, 2/10

### Information Booth

Men's Basketball Game vs. UMSL  
7:30 pm



## Meet the student senate

MIKE TERRY  
NEWS REPORTER

Students will have the opportunity to meet and grill members of student government at Meet the Senate Week Monday through Saturday, Feb. 10.

The first event, Trivia Night, will begin at 6 p.m. Monday in the Multi-Function Room in Prairie Hall. A second Trivia Night will be at the same time Tuesday in the Cougar Village Commons Building.

On Wednesday, free hot chocolate will be offered from 9:30 a.m. until 2 p.m. in the Peck Hall lobby. Free coffee and doughnuts will be available outside the Skywalk cafe from 7 to 9 p.m.

A town hall meeting with the senate will be from 11 a.m. to 1 p.m. Friday, Feb. 9, in the Goshen

Lounge of the Morris University Center prior to its regular meeting at 2 p.m. Student Body President Phil Gersman is scheduled to attend. Students will also be able to enter the student government office to see firsthand how elected representatives do their jobs. Applications for those interested in running for a position in March will be available.

The final event will feature an information booth at the men's basketball game versus the University of Missouri-St. Louis at 7:30 p.m. Saturday, Feb. 10, in the Vadalabene Center.

For more information on Meet the Senate Week and which members of student government are scheduled at each event, contact Public Relations Board Chair Debra Jaime in the Kimmel Leadership Center in the MUC.

## PLATES

from page 1

A plate that rang up 33 cents empty was weighed with the same candy bar and showed a charge of 91 cents, but should have had a cost of 80 cents.

Canney said he and his staff would take action to ensure students were being treated fairly.

A number of students interviewed by the Alestle found the problem startling.

"So that's why they charge \$710 for a meal plan. We're paying for our plate," 19-year-old education major Nicole Beyers said. "If I had known that, I wouldn't eat here at all."

Several other students said they suspected they were being charged for plates and have switched to plastic containers so they know how much they will be charged. Anyone using a plastic

container is charged 15 cents.

Student Trustee and University Center Board President Jason Holzum said he will take the issue up with the UCB and with the Food Service chairperson.

"Something obviously needs to be done. It's an issue that has never really been addressed," he said.

Holzum also expressed his concern and that of the Food Service staff to see the problem fixed.

MUC Director Mary Robinson said students are not intentionally being cheated.

"This situation is under immediate investigation and adjustments will be made," she said.

## WALKER

from page 1

Walker said the university would have to weigh cost effectiveness and feasibility before taking such an action.

He added he had tried such a program before and it was not effective because the students did not take advantage of the extended hours.

Other questions arose concerning how SIUE's resources can keep up with its growing population, how minority education could be improved, what could be done to increase cooperation among the campuses and if there was the possibility of setting up an environmental board.

Walker offered specific answers in some cases but said he was more concerned with gathering information to help him devise a plan for the university system.

Walker has also gathered information from forums in Carbondale and the Medical School in Springfield.

"I am not attempting to make the campuses like each other," he said. "Each campus is unique and we shouldn't try to change that but there are overall things for SIU as far as the quality of faculty and the services we provide the entire southern part of the state which has different needs than the northern part of the state."

He said, using this information, he hopes to come up with a shared vision of the direction and goal of the university.

"We want to do a better job of serving the citizens of this state and the nation and improve the way we do what we do," Walker added.

### Deadline extended for student writers

**The River Bluff Review deadline has been extended to Friday, Feb. 9. Submit works to the English department.**

**EDITORIAL:**  
**EDITOR IN CHIEF:**  
 Brian Wallheimer  
**MANAGING EDITOR:**  
 TOBIE DEPAUW  
**NEWS EDITOR:**  
 Danielle Stern  
**ASSISTANT NEWS EDITORS:**  
 DAN TOBERMAN  
 ANTHONY WATT  
**LIFESTYLES EDITOR:**  
 Brad Brefeld  
**ASSISTANT LIFESTYLES EDITOR:**  
 Meghan Daugherty  
**SPORTS EDITOR:**  
 Kumar Bhooshan  
**ASSISTANT SPORTS EDITOR:**  
 Vacant  
**CHIEF COPY EDITOR:**  
 Melissa Stein  
**COPY EDITORS:**  
 Karen M. Johnson  
 Lindsey Thomason  
 Christy Schicker  
**PHOTO EDITOR:**  
 Sheri McWhirter  
**SUPPLEMENTAL SECTIONS EDITORS:**  
 Elizabeth Grimsley  
 Maureen Hagman  
**GRAPHICS/PRODUCTION:**  
**GRAPHICS ASSISTANTS:**  
 Jennifer A. Green  
 Andrew Lehman  
**WEBMASTER:**  
 Rakesh Kumar Varganti  
**ADVERTISING:**  
 Nicole Humphreys  
**CIRCULATION:**  
 Scott Garkie  
 Rakesh Kumar Varganti  
**ALESTLE ADVISER:**  
 MIKE MONTGOMERY  
**GRAPHICS SUPERVISOR:**  
 MIKE GENOVESE  
**OFFICE MANAGER:**  
 MARY ALLISON

THE FIRST COPY OF EACH ALESTLE IS FREE OF CHARGE. EACH ADDITIONAL COPY COSTS 25 CENTS.

**LETTERS TO THE EDITOR POLICY:**  
 The editors, staff and publishers of the Alestle believe in the free exchange of ideas, concerns and opinions and will publish as many letters to the editor as possible. Letters may be turned in at the Alestle office located in the Morris University Center, Room 2022 or via e-mail at [alestle\\_editor@hotmail.com](mailto:alestle_editor@hotmail.com). All hard copy letters should be typed and double-spaced. All letters should be no longer than 500 words. Please include your phone number, signature (or name, if using e-mail) and student identification number.

We reserve the right to edit letters for grammar and content. However, great care will be taken to ensure that the message of the letter is not lost or altered.

Letters to the editor will not be printed anonymously except under extreme circumstances.

The Alestle is a member of the Illinois College Press Association, the Associated Collegiate Press and UWIRE.

The name Alestle is an acronym derived from the names of the three campus locations of SIUE: Alton, East St. Louis and Edwardsville.

The Alestle is published on Tuesdays and Thursdays during fall and spring semesters, and on Wednesdays during summer semesters. For more information, call (618) 650-3528.

**Have a comment?**  
 Let us know!  
 Send us an e-mail:  
[alestle\\_editor@hotmail.com](mailto:alestle_editor@hotmail.com)  
 The Alestle  
 Campus Box 1167  
 Edwardsville, Ill. 62026-1167

## There's no reason to be a 'Jackass'



I'm thinking about doing something stupid, but I can't find anything to blame it on.

I mean, what people would want to take responsibility for their own actions, especially when they can find something or someone else to be the scapegoat?

I'll give an example. A 13-year-old boy covered himself in gasoline and lit a match. Obviously he was burned. But we can't

possibly blame the 13-year-old himself. Oh, sure, the boy knew that fire would hurt and he deliberately covered himself in gasoline and lit himself on fire. But, no, let's not blame the lad; let's blame television.

In particular, this boy and his family are blaming MTV's "Jackass," a show where a cast of fools act out stupid stunts. The episode in question showed a man in a flame-retardant suit, covered in meat and placed on a barbecue grill. I guess the 13-year-old boy just forgot to put on his flame-retardant suit and strap meat to his body.

So now people are up in arms over this show that is giving children dumb and dangerous stunts to copy.

The real problem here is that we are not looking at the source of the problem. Let me give you a hint: Some parent let a 13-year-old boy watch "Jackass" and the 13-year-old boy doesn't have any common sense.

I'll admit that the actors in "Jackass" do a lot of stupid things. But that doesn't mean that we should try them. In a disclaimer before the show, the producers even tell viewers not to try their stunts.

Let's take a closer look at this. When I grew up, I watched Bugs

Bunny cartoons. If I recall, I never went to the neighbors' house and dropped an anvil on anyone. Come to think of it, I don't ever recall an incident like that ever happening to anyone I know.

No one ever says that Bugs Bunny is violent, but if you take a closer look, there are more acts of violence in a Warner Brothers cartoon than I care to count. And if you think about it, there is violence in almost all cartoons.

So why are people looking to blame "Jackass" for a boy lighting himself on fire? I have a guess.

More and more, people let television baby-sit their children. When parents get busy or tired, instead of dealing with a bored child, they just plop the child down in front of a television and let it do their job for them.

I don't recall a lot of times that I ever sat alone after school and watched television. If I wasn't out playing with my friends, I was doing something inside with my mother. That way, she didn't have to worry about what I was doing, and I wasn't so bored that I had to set myself on fire to have a little fun.

So what this all comes down to is some parent let a child watch a television show rated for mature audiences, and the child didn't have enough common sense to know that lighting himself on fire might hurt.

It sounds to me that the problem isn't with a television show, but with people taking responsibility for their own actions, no matter how foolish they are.

Everyone looks for a scapegoat. Maybe every once in a while we should stop blaming others for our own shortcomings.

Brian Wallheimer  
 Editor in Chief

## Letters to the Editor

Dear Editor:

It's a sad day when a student can't come to school in clean clothes through no fault of her own.

It was 10 p.m. on Tuesday and I was very tired after a long tedious day of class and a few horrid hours of homework in Dunham Hall. All I wanted to do is crash on my hard cot at Prairie Hall, but the huge disgusting pile of clothes stopped me dead in my tracks. So I gathered up the pile and trucked it down three floors to the laundry room only to find it locked. "Closed till further notice."

Thank you, Housing for making me take more time out of my already busy schedule. I now realize why so many people commute to school.

Angered and Disappointed,  
 Laura Coppinger

Got a problem on campus?  
 Can't seem to get an answer  
 to your questions?  
 Getting the runaround?  
 Contact the Alestle!

If you can't get answers or solutions to  
 your questions, let the Alestle know.  
 If there's a story, we'll investigate and  
 find out what's wrong.  
 E-mail us or write us.

## Correction

Todd Sivia was promoted to the student government executive board over the summer. The promotion was incorrectly reported in the Tuesday edition of the Alestle. The Alestle regrets the error.

KNOW YOUR WORLD.  
 READ THE ALESTLE.

**Kerasotes Theatres**  
 visit our website at [www.kerasotes.com](http://www.kerasotes.com) Showtimes Start Friday!

<p><b>CINÉ</b> 254-6746                  400 Central Ave., Roxana</p> <p><b>\$2.00 All Seats / All Shows</b></p> <p>What Women Want (PG-13)                  Fri/Sat 7:00, 9:45;                  Sun-Thurs 7:00;                  Sat/Sun Matinee 2:00</p>	<p><b>NAMEOKI CINEMA</b> 877-6630                  Nameoki Village, Granite City</p> <p><b>\$2.00 All Seats / All Shows</b></p> <p>The Family Man (PG-13)                  Fri/Sat 6:45, 9:30;                  Sun-Thurs 6:45;                  Sat/Sun Matinee 2:00</p> <p>Miss Congeniality (PG-13)                  Fri/Sat 7:00, 9:40;                  Sun-Thurs 7:00;                  Sat/Sun Matinee 2:15</p>
<p><b>SHOWPLACE 12</b> 659-SHOW                  Edwardsville                  Just W. of Rt. 159 on Center Grove Rd.</p> <p>ALL STADIUM SEATING • ALL DIGITAL SOUND</p> <p><b>\$5.00 • All Shows Before 6 pm</b>  <b>\$5.50 • Students • Seniors</b></p> <p>O' Brother, Where Art Thou? (PG-13)                  Daily 3:50, 6:50, 9:30;                  Sat/Sun Matinee 1:00</p> <p>Left Behind (PG-13)                  Daily 4:00, 6:30, 9:00;                  Sat/Sun Matinee 1:20</p> <p>Valentine (R)                  Daily 4:40, 7:30, 9:50;                  Sat/Sun Matinee 1:40</p> <p>Head Over Heels (PG-13)                  Daily 4:50, 7:10, 9:20;                  Sat/Sun 2:30</p> <p>The Wedding Planner (PG-13)                  Daily 4:00, *6:40, 9:10;                  Sneak &amp; Stay of Saving Silverman 2/3                  Sat/Sun Matinee 1:10</p> <p>Snatch (R)                  Daily 5:20, 7:40, 10:00;                  Sat/Sun Matinee 2:50</p> <p>Thirteen Days (PG-13)                  Daily 5:40, 8:45;                  Sat/Sun Matinee 2:40</p> <p>Save the Last Dance (PG-13)                  Daily 4:20, 7:00, 9:40;                  Sat/Sun Matinee 1:30</p> <p>Finding Forrester (PG-13)                  Daily 5:10, 8:15;                  Sat/Sun Matinee 2:10</p> <p>Cast Away (PG-13)                  Daily *5:30, *8:30;                  *Open Caption on Tues 2/6 only                  Sat/Sun Matinee 2:20</p> <p>Miss Congeniality (PG-13)                  Daily 4:30, 7:20, 9:50;                  Sat/Sun Matinee 1:50</p> <p>What Women Want (PG-13)                  Daily 5:00, 8:00;                  Sat/Sun Matinee 2:00</p> <p>Saving Silverman (PG-13)                  Daily *7:15                  *Sneak &amp; Stay on Sat 2/3 only                  Movie Money! Available at any theatre or                  online at <a href="http://www.kerasotes.com">www.kerasotes.com</a></p>	<p><b>COTTONWOOD CINEMA</b> 656-6390                  Upper Level of Cottonwood Mall                  (Next to Walmart) • Edwardsville</p> <p><b>\$2.00 All Seats / All Shows</b></p> <p>The Emperor's New Groove (G)                  Fri/Sat 6:45, 8:45;                  Sun-Thurs 6:45;                  Sat/Sun Matinee 2:30</p> <p>Double Take (PG-13)                  Fri/Sat 7:15, 9:15;                  Sun-Thurs 7:15;                  Sat/Sun Matinee 2:00</p> <p>Unbreakable (PG-13)                  Fri/Sat 7:00, 9:30;                  Sun-Thurs 7:00;                  Sat/Sun Matinee 2:15</p>
<p><b>EASTGATE 6</b> 254-5289                  Eastgate Center, East Alton</p> <p><b>\$4.00 • All Shows Before 6 pm</b>                  • Students • Seniors</p> <p>Traffic (R)                  Fri/Sat 4:45, 8:00;                  Sun-Thurs 4:45, 8:00;                  Sat/Sun Matinee 1:15</p> <p>Valentine (R)                  Fri/Sat 4:15, 7:00, 9:15;                  Sun-Thurs 4:15, 7:00;                  Sat/Sun Matinee 1:30</p> <p>Head Over Heels (PG-13)                  Fri/Sat 4:30, 7:15, 9:40;                  Sun-Thurs 4:30, 7:15;                  Sat/Sun Matinee 1:45</p> <p>Finding Forrester (PG-13)                  Fri/Sat 5:15, 8:15;                  Sun-Thurs 5:15, 8:15;                  Sat/Sun Matinee 2:00</p> <p>The Wedding Planner (PG-13)                  Daily 5:00, 7:30, 9:50;                  Sun-Thurs 5:00, 7:30;                  Sat/Sun Matinee 2:15</p> <p>Save the Last Dance (PG-13)                  Fri/Sat 4:00, 6:45, 9:30;                  Sun-Thurs 4:00, 6:45;                  Sat/Sun Matinee 1:00</p>	

**FREE REFILL on All Sizes of Popcorn and Soft Drinks**

# Lifestyles

PEOPLE, ENTERTAINMENT & COMICS

## MUC gallery features "Watatu"

MELINDA HAWKINS  
LIFESTYLES STRINGER



JENNIFER A. GREEN/ALESTLE  
"Carbanado II - In the Magic City" by Seitu James Smith.

The work of three black artists will be shown in an exhibition titled "Watatu" in recognition of Black History Month.

The "Watatu" exhibition will be showing in the Morris University Center Gallery through Feb. 28.

Edna Patterson-Petty is a textile artist with a series of quilted pieces in the exhibition. Two examples of Petty's work are "Breaking the Chains That Bind" and "Rejoice."

"Breaking the Chains That Bind" is a patterned fabric collage that depicts two silhouetted figures breaking a vivid, red chain.

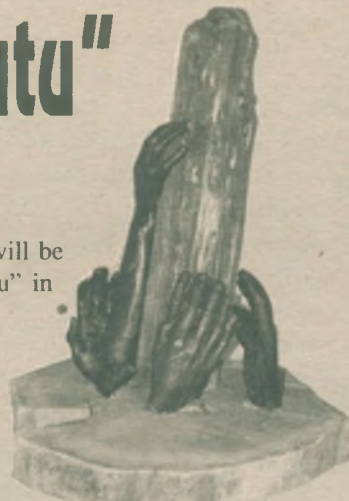
"Rejoice," another collage of fabric images, depicts dancing figures surrounded by joyous floral imagery.

Adelia Parker has both sculptural work and photographs in the exhibition. "Ray of the First Sun" is a sculptural piece in which cast-bronze hands seem to grasp for a chunk of weathered wood.

In "Katie," a series of photographs, a woman stands in front of the White House fence next to a superimposed sign which reads: "Wanted, Wisdom and Honesty."

Seitu James Smith has a series of oil paintings in the "Watatu" exhibition. "Carbanado II - In the Magic City" and "Black Gypsy" catch the eye. The most striking thing about "Black Gypsy" is the way the figure's gaze seems to transfix the viewer. Smith captures the riveting and soulful gaze of his subject admirably. "Carbanado II" depicts a man looking into the distance. The viewer can easily imagine the man being in the midst of a magic city. His skin is like chrome, reflecting intricate pattern, liquid, flowing form and brilliant color all around it.

The gallery is on the second floor of the Morris University Center. Hours are 9 a.m. to 4:30 p.m. Monday through Friday and 1 to 4:30 p.m. Saturday and Sunday.



JENNIFER A. GREEN/ALESTLE  
"Ray of the First Sun" by Adelia Parker.

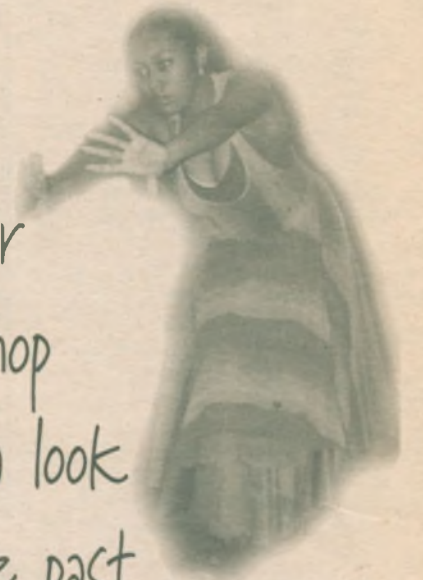


JENNIFER A. GREEN/ALESTLE  
"Sisters" by Seitu James Smith.



JENNIFER A. GREEN/ALESTLE  
"Lady Sings the Blues" by Edna Patterson-Petty.

Black Theater Workshop takes a look into the past



MIGUEL MARLING  
LIFESTYLES STRINGER

The third annual Black Theater Workshop will be performing "Alberta Hunter: Grand Old Lady of the Blues and Other Tales from the South" at 3 and 7:30 p.m. Thursday, Friday and Saturday in the Metcalf Student Experimental Theater.

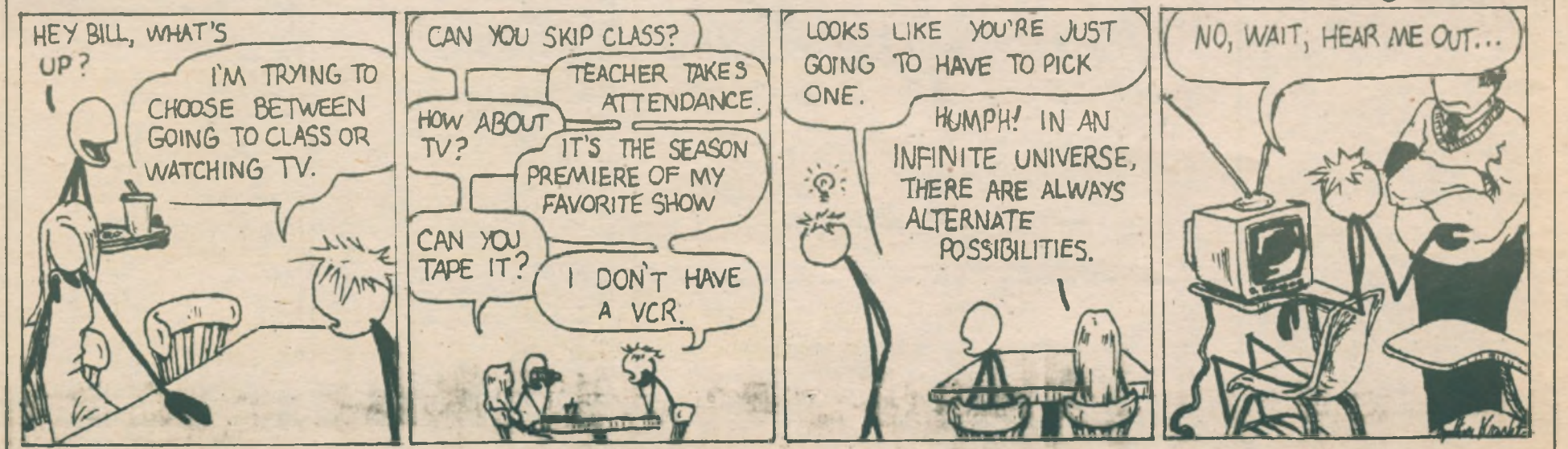
A look into the past ranging from the late 1800s through contemporary times, the full-length production's first part will feature guest artist and member of the Actors' Equity Association Fannie Leiby. Portraying Alberta Hunter, a blues singer in

see THEATER, page 5



BETH KRUZAN/ALESTLE

STICKMAN



**Quote of the day...**

"A friend is someone who lets you have total freedom to be yourself."

-Jim Morrison

**THEATER**

from page 4

the 1920s, Lebbby will be accompanied on her soulfully blue trip by pianist Adaron "Pops" Jackson, an SIUE jazz department graduate student. Following a short intermission, the second portion of the production will be a presentation of scenes, poems and monologues from the black theater canon. Pieces will range from soliloquies to dances and stretch from the deep South to the shores of Africa.

"The performances would not be possible without the help of an SIUE Excellence in Undergraduate Education Grant and the support of the SIUE theater and dance department," said Lisa Colbert Bandele, director, performer, and theater and dance department artist-in-residence.

All performances are free.



**Hollywood ★ Tan**  
**FIRST VISIT FREE**  
**We accept competitor's coupons**  
**Call Today: 656-TANN or 667-4140**

**Idlewood Estates**  
 Apartments & Townhomes  
*Just minutes from SIUE!*  
 Ask About Our College Special  
 2 Bedroom Townhomes (with W/D Hookups)  
 1 & 2 Bedroom Garden Apartments  
 24-hour Emergency Maintenance • Some Utilities Included • Small Pets OK  
 Call for Prices & Information  
 345-8589

**Westgate**   
 Apartments & Townhomes  
*10 minutes from SIUE!*  
**ASK ABOUT OUR COLLEGE SPECIAL**  
 2 Bedroom Townhomes  
*(with W/D hook-ups)*  
 1 & 2 Bedroom Garden Apartments  
*Laundry Facilities Available • Some Utilities Included*  
**Call For Prices & Availability**  
**(618) 931-0107**

**Left Coast**

**Right Job**

Bring your **teaching degree** to



**California**

In California you'll have more choices for school locations, teaching environments, climate, sports, entertainment and places to live than in any other state. And you'll be welcomed with open arms and minds eager to learn. We need you here. To learn how easy it is to get here, call toll-free 1-888-CalTeach or visit our website at [www.calteach.com](http://www.calteach.com).

- Competitive starting salaries and benefits
- Smaller class sizes in schools statewide
- Housing and cost of living incentives
- Strong community support for teachers
- Beautiful and diverse climate and scenery



**CalTeach**  
 Left Coast. Right Job.™

**Cassens**  
*is the place to*  
**RENT!**

**Cars**  
**Trucks**  
**Vans**

**Dodge DURANGO**  
 4x4 SUV's

Chrysler Products - Well Equipped  
 "A Size To Fit Your Needs"

**Cassens**  
 EDWARDSVILLE/GLEN CARBON  
 CHRYSLER • DODGE • PLYMOUTH  
 Call Rental **692-7386**  
 3333 S. HWY 159 • Glen Carbon  
 2 Miles North Of I-270

## Today in sports history

On this day in 1968, Vince Lombardi resigns as head coach of the Green Bay Packers. Lombardi won five National Football League titles as the Packers coach.

# Sports

## SIUE BASEBALL COACH RECEIVES HONOR

Gary Collins, SIUE's head baseball coach, received College Coach of the Year honors at the recent Great St. Louis Major League Baseball Scouts hall of fame dinner.

Tennis - cross country - Golf - Volleyball

◆ Page 6

The A l e s t l e

THURSDAY, FEBRUARY 1, 2001 ◆

## Lady Cougars will seek revenge in Indiana

SIUE travels to Indiana to try to avenge an early season loss to the IUPU-Fort Wayne Mastodons



PHOTO COURTESY/PHOTO SERVICES

Jill Johnson has scored in double figures in the last two games.

KUMAR BHOOSHAN  
SPORTS EDITOR

The Lady Cougars are ranked fourth in the GLVC, but over their last eight games, they have been the best in the conference.

The Cougars, 8-3 in the GLVC 13-4 overall, are riding an eight-game winning streak and will be taking it back on the road this weekend to Indiana to face Indiana University Purdue University-Fort Wayne and St. Joseph's College with revenge on their mind.

The Lady Cougars will travel to Fort Wayne Thursday to play the Mastodons of IUPU-Fort Wayne. IUPU-Fort Wayne, 5-6 in the conference and 12-6 overall, will be coming off a 72-68 loss to ninth-ranked Lewis University on Jan. 18.

The last time these conference opponents played, the Mastodons handed the Lady Cougars their first conference loss, downing the Lady Cougars 76-72.

In that game IUPU-Fort Wayne's Trish Fleming led the Mastodon stampede, scoring 32 points and pulling down two rebounds. Teammate Jessica Brock totaled nine points and finished with eight rebounds. SIUE was plagued with turnovers in its last meeting as well, committing 26 turnovers and allowing the Mastodons to commit only 20. Despite three Lady Cougars finishing in double figures led by Misi Clark's 19, SIUE was unable to get much help from the bench.

But these days, coach Wendy Hedberg's team features at least eight players averaging three points or better. Leading the bench play for the Lady Cougars is Jill Johnson, who started the last two games for the injured Sarah Cook, recorded double-digit points in the last two SIUE wins.

SIUE will then travel to Rensselaer, Ind., to face St. Joseph's Saturday.

St. Joseph's is ranked last in the GLVC with a 1-10 record and an overall record of 1-16.

Their last two games were both losses to conference opponents, falling to Lewis University 63-94 and the University of Wisconsin-Parkside 78-88.

The Lady Pumas will be led by Heather Allen and Whitney Avery. Allen is the Lady Puma's leading with a 15.9 points per game average and averaging 8.2 rebounds per game. Avery is currently second in scoring with 10.4 points per game and averaging close to five rebounds per game.

Lady Puma's head coach Lynn Plett will have to remedy her club's turnover problems and find an answer to the streaking Clark and the Lady Cougars.

Clark is riding a streak of her own, she has scored in double figures in her last 86 consecutive games. Clark's backcourt teammate Jessica Robert is also averaging in double figures this year, scoring 10 points per game.

After this game the Lady Cougars only play in seven more games before the GLVC tournament in Evansville, Ind.

## SIUE hopes to improve on the road this weekend

KELI KEENER  
SPORTS STRINGER

It's been a rocky road for the men's basketball team to say the least.

SIUE is on an eight-game skid but hopes to recover on the road.

The Cougars, 4-13 overall and 1-10 in the Great Lakes Valley Conference, are still sitting at the bottom of the league as they prepare to meet Indiana University Purdue University-Fort Wayne at 6:45 p.m. Thursday and St. Joseph's College at 3:15 p.m. Saturday.

IUPU-Fort Wayne is 11th in the GLVC with a 3-8 record in the GLVC and a 6-15 overall record. The Mastodons dropped two games on the road last week, falling to Lewis University 85-79 and the University of Wisconsin-Parkside 63-55. Junior Nick Wise leads the team and is fourth in the conference, averaging 17.2 points per game.

The Cougars and the Mastodons squared off earlier this year, and the Mastodons fell to the Cougars 77-72, giving SIUE its only conference win of the season. In that game, Wes Pickering recorded a double-double and Luke Humphrey poured in 19 points for the Cougars.

The Cougars will move on to St. Joseph's Saturday. The Pumas have been putting up the numbers lately, winning four of their last six games. Last week, they bested Lewis University in a double overtime clincher 118-114. St. Joseph's is sixth in the GLVC with a 5-6 GLVC record and an 11-9 overall record.

Junior forward Brent Mason leads the Pumas, averaging 19.0 points per game. He was last week's GLVC Player of the Week, leading the Pumas to their last two victories and scoring 32 points Saturday against Lewis and 19 points against Wisconsin-Parkside. Mason shot 100

percent 16-16 from the free-throw line. He holds the top spot in the conference in free-throw percentage (93.7 percent) and ranks third in the nation. The Pumas are ninth in the nation in shooting foul shots at 76.4 percent.

Marty Perry leads SIUE in points per game (13.6), field goal percentage (53.5), free-throw percentage (89.5) and three-point field goal percentage (41.2). Garrett Thomas leads the team with 80 assists.

SIUE will also try to turn around some statistics this season as well. The Cougars have been outscored this season by almost nine points per game. They are also carrying a turnover-to-turnovers allowed ratio of -2. Coach Jack Margenthaler's team will have to rely on less turnovers and play a controlled half-court game to slow down the tempo because of the lack of numbers on his bench.



PHOTO COURTESY/PHOTO SERVICES

Luke Humphrey is averaging 8.8 points per game and two assists.

**SUNDAZZLERS TANNING**

**656-UTAN (8826)**



**7 tans for \$21**

**VOLUTUOUS VEGAS  
"COME SHAG IN DRAG!"  
DANCE 2001**

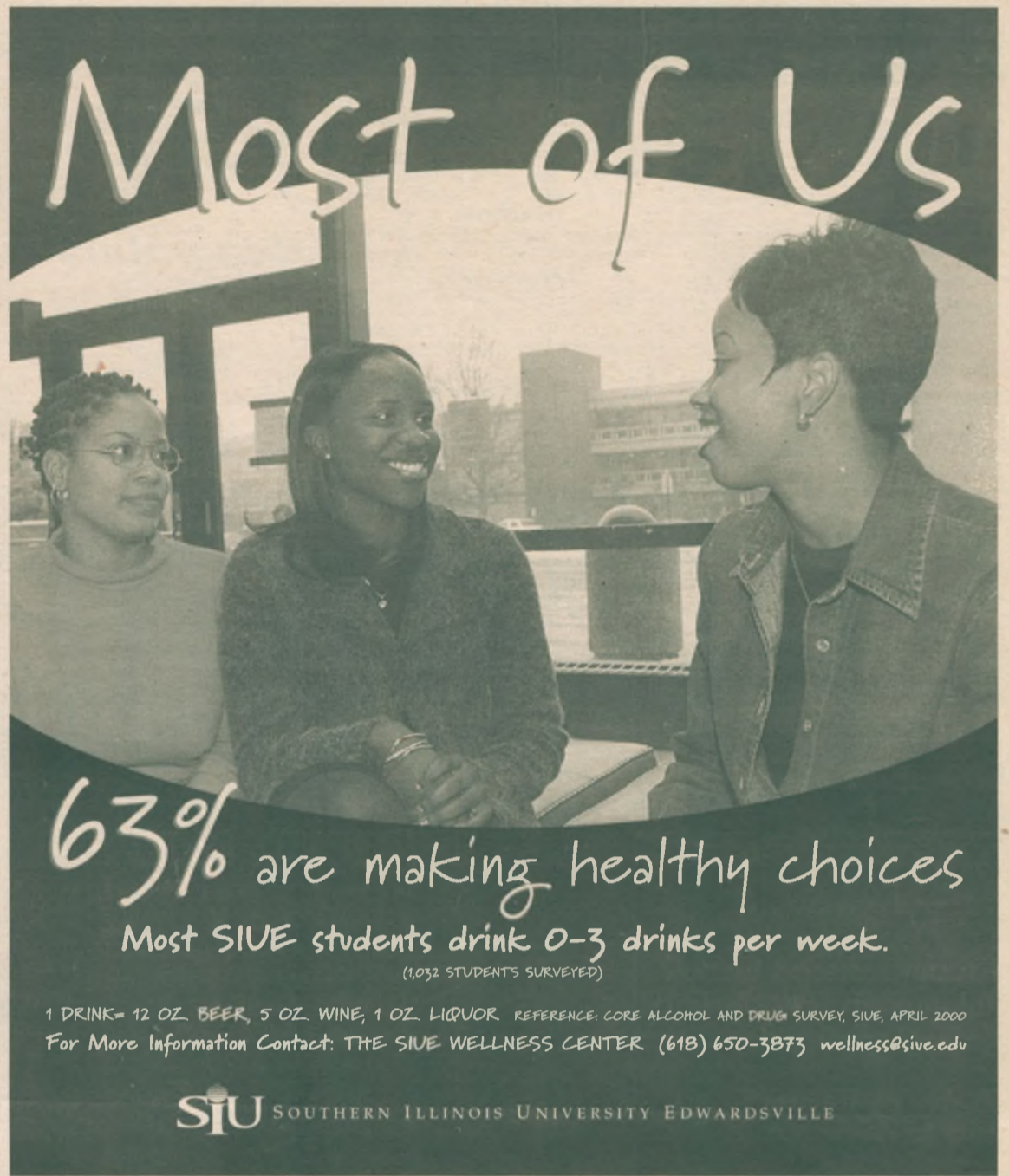
**Friday, February 16  
10:00 p.m. - 2:00 a.m.  
Meridian Ball Room**

**COME IN COSTUME OR AS YOURSELF!**

**In conjunction with:  
VAMPIRE LESBIANS OF SODOM  
and  
Sleeping Beauty or Coma**

**Student Experimental Theatre Organization  
United States Institute for Theatre Technology  
University Dance Organization**

**Funded in whole or in part  
by student activity fees.**



**Most of Us**

**63% are making healthy choices**  
Most SIUE students drink 0-3 drinks per week.  
(1,032 STUDENTS SURVEYED)

1 DRINK = 12 OZ. BEER, 5 OZ. WINE, 1 OZ. LIQUOR. REFERENCE: CORE ALCOHOL AND DRUG SURVEY, SIUE, APRIL 2000  
For More Information Contact: THE SIUE WELLNESS CENTER (61B) 650-3873 wellness@siue.edu

**SIUE SOUTHERN ILLINOIS UNIVERSITY EDWARDSVILLE**



**MODULES**

**Leadership Modules  
Held on Tuesday**

**2/6/01**  
Module 4, 2:00 p.m.  
Effective Communication  
Bill Miller, St. Mary's Hospital  
MUC - Faculty Club

**2/6/01**  
Module 14, 6:30 p.m.  
Major Influences in the Political Process  
Joe Dunn, Illinois Coalition for Community Services  
MUC - Faculty Club

**2/13/01**  
Module 5, 2:00 p.m.  
Group Process  
Captain Gregory Bak, SIUE Army R.O.T.C.  
MUC - Fitness Center

**2/13/01**  
Module 15, 6:30 p.m.  
Community Change: What a Leader Needs to Know  
Al Kerth, Eads Center  
MUC - Faculty Club

**SLDP REMINDERS...**

**Volunteer Projects**  
February 3 - One Day Urban Plunge, E. St. Louis & Belleville, IL  
February 8 & 26 - Haiti Connection fundraiser, Savvis (Kiel) Center  
February 17 & 24 - Carlyle Lake, Carlyle, IL  
February 24 - Share Food Co-op, Granite City, IL  
February 24 - Computer Rehab Volunteer Project, Washington Park, IL  
March 11-15 - Spring Break Trip, Cherokee Nation, Oklahoma  
March 10 - 17 - Spring Break Trip - Florida

**IMAGE Seminar**, February 10, 10:00 a.m. - 3:00 p.m., MUC

*For More Information Contact  
the Kimmel Leadership Center at extension 2686  
or visit the website at [www.siu.edu/KIMMEL/SLDP](http://www.siu.edu/KIMMEL/SLDP).*

**Discover Scuba**

Thursday, February 8  
1:30 pm-4 pm  
There is no fee for this event.  
Meet at the VC Pool



At no cost you can experience SCUBA. Scuba World is offering a free introductory SCUBA lesson to SIUE students, faculty, staff, alumni and their guests. Please call us at 650-BFIT and let us know if you plan attend. Bring a swimsuit and a towel.



**Valentine's Fitness Day**

February 16, 10 am-4 pm

**FREE Screenings:**

- ♥ Blood Pressure
- ♥ Body Composition
- ♥ Cardiovascular Fitness
- ♥ Muscular Strength
- ♥ Flexibility
- ♥ Lung Function
- ♥ Cholesterol & Blood Glucose\*

\*Individuals wishing to have their cholesterol and blood glucose measured must arrive no later than 3:30 pm.

An explanation of your results & recommendations for improvements will be provided.

*Workout attire is recommended.*

All students, faculty, staff and Student Fitness Members welcome!

Brought to you by the SIUE Wellness Program, Eta Sigma Gamma, Campus Recreation, the Department of Kinesiology and Health Education, the School of Nursing, Student Government and Alton Memorial Hospital.

For more information call 650-BWEL

**Lifeguard Training Course**

March 25-April 29

Saturdays 10 am-3 pm • Sundays 12 pm-4 pm

Register at the Student Fitness Center by March 19

Students \$80 • Non-Students \$110

**SIUE Wellness Program • Campus Recreation, Student Affairs • 650-B-FIT**



**CAMPUS RECREATION**

Look us up on the NET at <http://www.siu.edu/CREC> • Campus Recreation, Student Affairs

### HELP WANTED

Part time phone work Tuesday, Wednesday, Thursday & Saturday. APX 10-15 hours/week. Resume to P.O. Box 702 Collinsville, IL 62234/2/6/01

Part time help wanted: Gen. Apartment Maintenance Collinsville/Edwardsville. Must have car and tools. Flexible hours start \$10/hr. List skills. Send to P.O. Box 702 Collinsville, IL 62234. 2/6/01

Part time position available in Collinsville on Mondays. Ability to work well with children. Ability to work with individuals of diverse backgrounds. Good leadership skills. High school diploma or equivalent. Contact Kathleen at 692-0692, ext. 125. 2/1/01

Absolutely Free Info!! Internet users wanted. \$2000-\$5000/month. www.stay-home-profit.com 2/27/01

### PERSONALS

Zeta Phi Beta Sorority Inc. Presents Z.S. Delluzzion A night of sheer fantasy Friday, February 2, 2001 7:20 p.m. Conference Center MUC. 2/1/01

Alpha Phi 2001 King of Hearts Pageant and Dance. Friday, February 9th at 9:30 at the Maryville KC Hall. \$5.00 to enter \$1.00 extra votes! 2/1/01

What's your major malfunction! Report to Phi Kappa Psi's M\*A\*S\*H B\*A\*S\*H Friday, February 2nd at the KC Hall in Maryville. Doors open at 9:30 pm. 2/1/01

To the ladies of Alpha Phi Congrats to our victorious win on Sunday. Love and mine Amie. 2/1/01

A special thank you to Paul Vieth for his time and dedication. Thanks, the Ladies of Alpha Phi. 2/1/01

### FOR SALE

'87 Volkswagen Fox 4 door, AC, cruise, 5 speed. 59,000 miles. \$2,400 obo. Call (618) 980-0465 2/6/01

Used books at bargain prices. Good Buy Bookshop, Lovejoy Library Room 0012. Wednesdays & Thursdays 11 a.m. to 3 p.m. Sponsored by Friends of Lovejoy Library. 4/26/01

Phone Card Sale India Pakistan 32 min. \$10.00. Long distance 5 cents/min. no connection Akbar Grocery (314) 428-1900. 4/12/01

'87 Nissan Maxima, black, new brakes and tires, 200,xxx, \$1,000.00 obo, call 558-3809 or alidainc@yahoo.com. 2/6/01

Get an enticing 2001 Calendar tomorrow in the Goshen Lounge. Only \$5.00. Feb. 2. Call 650-4058. 2/1/01

### PLACING A CLASSIFIED AD

#### Frequency Rates

(Five (5) words equal one line)

All classifieds and personals must be paid in full prior to publication.

1 run: \$1.00/line 5 runs: \$.90/line  
(2 line minimum) 20 runs: \$.85/line  
3 runs: \$.95/line Personals: \$.50

#### Deadlines

Tuesday Publication: Noon Friday

Thursday Publication: Noon Tuesday

#### Adjustments

Read your ad on the first day it appears. If you cannot find your ad or discover an error in your ad, call 650-3528 or come into the office. Positively no allowance made for errors after the first insertion of advertisement. No allowance of correction will be made without a receipt.

#### Placing Ads

To place a classified ad, come to the Office of Student Publications, located in the UC, Rm. 2022, and fill out a classifieds form.

#### Alestle Office Hours:

Monday thru Friday: 8am - 4:30pm  
650-3528

### RESUME



Busy Bee  
Copy Service  
(618) 656-7155

311 North Main Street  
Edwardsville, IL 62025

TYPOGRAPHY • PHOTOGRAPHY • ART

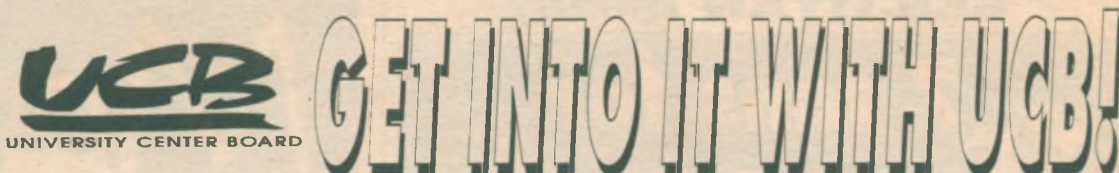
OFFSET REPRODUCTION • FOLDING

### AUTO INSURANCE

- ✓ LOWEST RATES
- ✓ NO ONE REFUSED
- ✓ CREDIT CARDS OK
- ✓ FAST PHONE QUOTES
- ✓ LOW DOWN PAYMENTS

#### GREG SCHMIDT AGENCY

188 North Main, Edwardsville  
656-9886



# GET INTO IT WITH UCB!

## Congratulations to COLLEGE BOWL Winners!!!

Top Scorer:  
**Joe Hinton**

1st place team: **"Crouching Tigers" -**

**Marshall Mullins, Rachel Duede, Joseph Dethrow,**  
**Joseph Hinton, Teresa Maciejewski**

2nd place team: **"Student Government"**

3rd place team: **"The Team"**

**Good Luck at Regionals !!!**

# GENERAL ASSEMBLY

Wednesday, Feb. 7  
5:30 p.m.  
Opapi Lounge

Topic:  
**"What do commuters want?"**

# SOUP & SUBSTANCE

Special Guest:  
**Rudy Wilson**

Topic:  
**"Am I my brother's keeper?"**

Thursday, Feb. 8  
12 noon  
Opapi Lounge

# LIFE AFTER CLASS

Thursday, February 1

**Black History Month**  
**American Heart Month**

**WSIE Radio Show**  
10:00a.m. - 1:00p.m.  
Goshen Lounge,  
Morris University Center

**Cultural Bazaar and Marketplace**  
10:00a.m. - 6:00p.m.  
Goshen Lounge,  
Morris University Center

**United Campus Ministry Spiritual Growth Group - Soup for Finals**  
11:00a.m. - 1:00p.m.  
Religious Center

**SIUE Jazz Band - Salute to Miles Davis**  
11:20a.m. - 1:00p.m.  
Goshen Lounge,  
Morris University Center

**Roller Hockey Officials Clinic**  
4:30p.m.  
Vadalabene Center,  
Room 2001

**Black Theater Workshop Production**  
7:30p.m. - 10:00p.m.  
Metcalf Student  
Experimental Theater

Friday, February 2

**Jazz in the A.M.**  
Featuring Laverne Holiday

**WSIE Radio Show**  
10:00a.m. - 1:00p.m.  
Goshen Lounge,  
Morris University Center

**Cultural Bazaar and Marketplace**  
10:00a.m. - 6:00p.m.  
Goshen Lounge,  
Morris University Center

**Black Theater Workshop Production**  
7:30p.m. - 10:00p.m.  
Metcalf Student  
Experimental Theater

Saturday, February 3

**Action! Days Volunteer Service**  
8:00a.m. - 4:00p.m.  
One Day Urban Plunge  
East St. Louis & Belleville, IL  
Student Leadership  
Development Program and  
Volunteer Services

**Action! Days Volunteer Service**  
8:00a.m. - 4:00p.m.  
Computer Rehab  
Volunteer Project  
Washington Park, IL  
Student Leadership  
Development Program and  
Volunteer Services

**Black Theater Workshop Production**  
7:30p.m. - 10:00 p.m.  
Metcalf Student  
Experimental Theater

Sunday, February 4

**Catholic Mass/Social**  
10:30a.m. & 8:30p.m.  
Religious Center

Monday, February 5

**Book in Every Home through MARCH 3**  
Book collection at  
various locations

**SIUE Gospel Choir**  
12:00Noon - 1:00p.m.  
Goshen Lounge,  
Morris University Center

**Hot Shot Contest**  
4:00p.m. - 5:30p.m.  
Student Fitness Center

Tuesday, February 6

**Business Hour**  
11:00a.m. - 12:15p.m.  
Alumni Hall, Room 2401

**Sexual Assault Survivors Group**  
2:30p.m. - 4:00p.m.  
Rendleman Hall, Room 0214

**Hot Shot Contest**  
4:00p.m. - 5:30p.m.  
Student Fitness Center

Wednesday, February 7

**United Campus Ministry - Sisters Circle**  
12:00p.m. - 1:00p.m.  
Religious Center

**America's First Black Town: Brooklyn, Illinois**  
Presentation and Signing  
by Sundiata Keita Cha-Jua  
12:00p.m. - 1:00p.m.  
Goshen Lounge, MUC

**UCB General Assmblly**  
5:30 p.m.  
Morris University Center  
Opapi Lounge

**Fellowship Dinner & Prayer**  
6:30p.m.  
Religious Center

**For More Information Call 650-5555**