

University Archives (02)  
Campus Box 1063

# the ALESTLE

Alton - East St. Louis - Edwardsville

March 24, 2016

Vol. 68 No. 26

## INSIDE THE ISSUE:

Professors find link between climate change, homicide rate

PAGE 6

Cougar softball wins home opener with walk-off

PAGE 9

# The Election Edition

PAGES 2-4



| Illustration by Lauen Lowe / Alestle



ALESTLELIVE.COM



@THEALESTLE



THEALESTLE



FACEBOOK.COM/ALESTLELIVE



# NEWS

Questions or comments regarding this section? Contact the Managing Editor at 650-3527 or news@alestlelive.com.

# Meet the Candidates

## 2016-2017 Student Government election underway

### Presidential Candidates



**Luke Jansen**

"As your student body president, I will utilize my previous Student Government experience to truly represent the student body. I am not entering this position with my own specific agenda; rather, I will gauge the perspectives of the entire student body to create a better SIUE experience for all."



**Ricky Rush**

"Students of SIUE feel that their voices are unheard. They feel as if their opinions do not matter. These are unwanted issues. We are one; we should all be seen as one and treated as one. This is why I am running for president — to bring more unity to SIUE."



**Chase Tiffany**

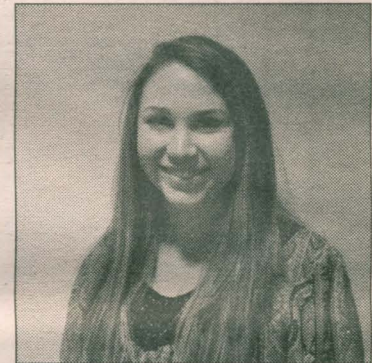
"I will strive to create a diverse Student Government experience in order to accurately reflect SIUE's campus and to bring back the idea 'Voices are heard and action is taken.' I will aim to create opportunities for the SIUE student body to express ideas and issues important to them."

### Vice Presidential Candidates



**Kalie Eads-Penn**

"As your student body vice president, I aim to promote diversity, inclusion, transparency and advocacy for all students at SIUE. I hope [to] use my experience and the momentum have started from this position into a second term. Go Cougars!"



**Megan Gooch**

"I want to be a representative of all students on campus and make the changes you, the students, want and need on campus to ensure the highest quality experience at SIUE possible. I also hope to continue working on my mental health and sustainability initiatives in the upcoming school year."

### Graduate Senatorial Candidates



**Vu Do**

"As an MBA student, a research assistant and a member of SIUE Graduate Advisory Board, I would like to combine the advantages I have through these roles with a Student Senate position to further promote the diverse culture of international students and academic professional initiatives for graduate senators."



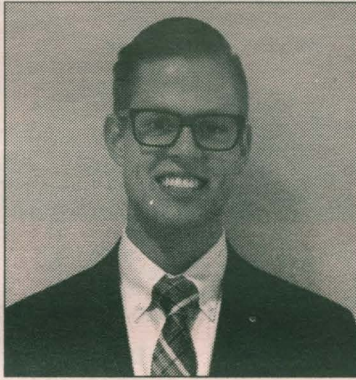
**Karlea Harbaugh**

"I seek to create transparency in the administrative decisions that this institute makes so that students can gain the knowledge needed to become more involved in the decisions themselves. After all, this is our school, our education, our future; it is time for students to have a sense of [urgency]."



Elections will be held online on April 5-6; students will receive an email directing them to the voting website

# Trustee Candidate



Ryan Johnson

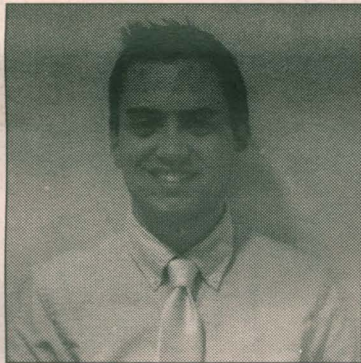
“As the student trustee, I will promote campus pride to students at SIUE and will work toward [the] betterment of campus life, which will provide a more inviting university to all current and prospective students. I will also continue to encourage a more sustainable environment to support the SIUE community.”

# Senatorial Candidates



D'Amonti Batton-Jackson  
At large

Quote from candidate was not provided.



Carson Dodd  
At large

“As an actively engaged student on campus, I realize that student organizations make up the fabric of the SIUE community, but this fabric has been stretched too thin in recent years. As your student senator, I will encourage more involvement and work hard to boost membership and engagement on campus.”



Clayton Donald  
CAS- Sciences and Math

“This year, I set my goals as a freshman senator toward the betterment of the freshmen class. However, this year is a new year. My goal this year will revolve around the betterment of the biology lab [and] lecture hall facilities and the curriculum for the students in the science department.”



Dustin Dougherty  
Business

“As student senator for the School of Business, I will work together with my fellow student senators as well as the whole Student Government to be the voice of the School of Business students and represent the connection between students and administration.”



Austin Evans  
At large

“If elected student senator, my primary objective is to be a voice for students and to collaborate with the university to ensure satisfaction for both parties. With a variety of majors, I am able to relate to a wide range of students as well as understand the problems they face.”



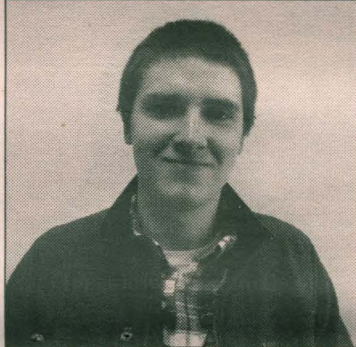
Sierra Ewing  
Health/Ed/Human Behavior

“I would like to help advocate for our minority students and encourage an environment of mentorship and inclusion. I would also like to serve as a supporting member of Student Government, offering the organization and communication skills that I have to further network with our student body.”



Jasmyne Fowler  
Business

“Representing the School of Business, I will do everything possible to support and adhere to the students' wants, needs, interests and concerns to help enhance the university. Furthermore, I'll make it my duty to seek out feedback and opinions to ensure that the students' voices are heard.”



Jace Gaddis  
Nursing

“As a student senator for the School of Nursing, I plan to communicate ideas to and from the nursing student body to the staff and faculty of SIUE so that we may improve the school together.”



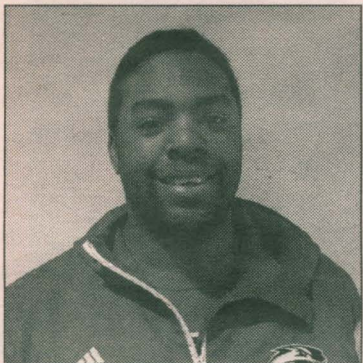
Danielle Ganassin  
Nursing

“As a current member of the student senate on Student Government, I will strive to promote SIUE's five values of citizenship, excellence, inclusion, integrity and wisdom while collaborating with the students and faculty members on our campus to empower individuals to achieve their fullest potential.”



Ciera Green  
Health/Ed/Human Behavior

“While in office, I plan to create a more inclusive university, including students and the surrounding community. I would like to see more opportunities for internships for the School of Education, Health and Human Behavior. I also feel there needs to be more tutoring or help for all departments.”



Qur'an Green  
CAS- People and Culture

“While in office, I plan to fight for the students of SIUE. Through my years here at SIUE, I have felt a great disconnect with Student Government, especially being a minority student. Once elected, I plan to give back the voice to the minority students of SIUE.”



Patricia Guerrero  
At large

“As senator, I will strive to bring awareness and expand the students' knowledge of diversity on campus. As a large institution, we are close minded to ideas that seem uncomfortable. I want to be the voice of those who are not regularly heard.”



Andrea Hentrich  
At large

“As a returning student senator, I will continue to make it my top priority to be a voice, making decisions that reflect the needs and desires of students. I will continue to promote diversity and inclusion on campus, while increasing involvement and creating a more social, balanced and welcoming community.”



Ladijah Hollingsworth  
CAS- Arts and Communication

“Leave it better than you found it.” That's my motto, and I want to leave SIUE better than I found it by promoting diversity and inclusion for all students. I will also promote transparency and fairness because everyone on this planet deserves it.”



Amanda Hyde  
At large

“While in office, I will complete the task of improving the occurrences of diverse programs and/or activities on campus. This includes having organizations and faculty work together to promote the importance of campus community involvement.”





**Isaac Jensen**  
Business

"Dear students, my name is Isaac Jensen, and during my term as senator, I will bridge the gap between Student Government and the students they serve. I will also strive to educate the public about social issues that are plaguing our campus and how to solve them."



**Michelle Krichevsky**  
At large

"If I become senator at large, I would be able to create a diverse and inclusive environment by listening and voicing the opinions of minority groups on campus."



**John Little**  
At large

Quote from candidate was not provided.



**Mallory McCune**  
Business

"As a returning senator, my focuses will be on diversity, transparency, inclusion and advocacy. I will work towards improving student involvement and be an advocate for change, while upholding and promoting the traditions and values of our university."



**Landon Montgomery**  
CAS- Arts and Communication

"As a student senator for the College of Arts and Sciences, I will promote campus involvement and unity to the students within the arts and communications studies. I will also be an advocate for diversity groups on campus and work to have equality for all students in all areas."



**Alleah Moore**  
At large

"I intend to expand the teacher-student interaction in and out of the classroom. This includes study sessions and/or seminars to increase the success rate of students remaining above a C grade average for courses [and reforming] the process by which advisors recommend courses for students to take."



**Jaleelah Muhammad**  
CAS- People and Culture

"As student senator for the College of Arts and Sciences, I plan to be the voice that my peers deserve, especially the 36 percent of African-Americans that call CAS home. My goal is to improve the relationship between administration so that every student feels the full support of their university."



**Joi Murray**  
Health/Ed/Human Behavior

"In particular, I am interested in making the overall college experience at SIUE the best it can be for all of our diverse students. By creating an environment that serves the academic and social interests for our students, our time here at SIUE will go far beyond a degree."



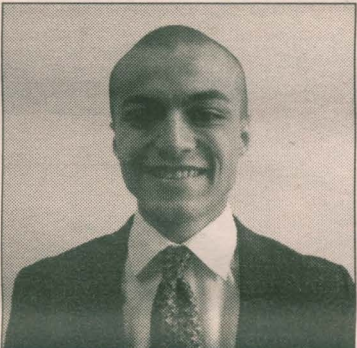
**Kyana Nunnally**  
Health/Ed/Human Behavior

"As a student senator, my intentions are to be the voice of the students. I want to ensure that our campus focuses on inclusion for those that attend our university. If elected, I will strive to be a voice for the many voices that go unheard on this campus."



**Erin O'Flaherty**  
Health/Ed/Human Behavior

"My drive for Student Government is to represent students who do not feel heard, including their views on our issues and ideas for positive change at SIUE. I will make it a priority to hear from students of all walks of life to maximize our potential as a university."



**Cody Osborne**  
CAS- Sciences and Math

"I will use my experience from serving as undergraduate senator this year to navigate the direction that SIUE will take in the near future. I will promote diversity, inclusion, involvement, and of course, Cougar pride in the SIUE community, especially from those that I am to represent from CAS."



**Nick Raftopoulos**  
CAS- People and Culture

"As senator, I want to get more people involved in campus activities and student organizations. I believe there are many students who feel left out, and it's important to get these students involved. If elected, I will be a senator who will fight for everyone, not just the few."



**Shacoya Richie**  
CAS- People and Culture

"As a senator, my civil duty will be to promote positive interactions among the student body. I participated in several on-campus organizations: tour ambassadors, SOAR recruitment, student panels and [am] a member of National Society of Leadership and Success. I will improve the present plans for SIUE."



**Taylor Robinson**  
CAS- People and Culture

"I have always been a firm believer in teamwork and diversity. If elected, one of the things that I will try to do is to combine the two elements to create a comfortable and friendly environment. I will establish a setting where students will be able to contribute creative ideas."



**Haley Schlecht**  
CAS- People and Culture

"As your student senator of the College of Arts and Sciences, I want to emphasize that our college's voice is heard through me. I promise to be approachable and open minded while respecting your individuality and prompting diversity at SIUE."



**Johnnell Seanior**  
CAS- People and Culture

"As senator, my intent is to create a more inclusive campus community that is a true representation of the student [body's] needs and interests. If elected, I will work hard to improve the current experience of undergraduate students on campus and be an advocate for student needs."



**Edward Siemer**  
CAS- People and Culture

"I propose we build a great, great wall to keep out geese, Parking Services ... Jokes aside, I plan to be a representative of the voices of the student body, and I will do everything within my power to address the concerns of those I serve. Let's make SIUE great again!"



**Kiana Stevenson**  
Engineering

"As a student senator for the School of Engineering, I will promote the ties and strive for a better connection between engineering students, organizations and the campus as a whole. I will also further my progress in recruiting students by students, which helps with the university retention rates."



**Quinn Vaughn**  
Engineering

"As a senator, I would like to improve the School of Engineering's involvement on campus and make them more aware of issues affecting them, as I feel like they are generally not knowledgeable on these subjects."



**Gloria Wright**  
At large

"As a candidate in this year's election, I ensure that after obtaining my position as a senator at large, that our student body will remain my first priority. I look forward to not only being the voice that our class needs, but to help make SIUE an even better university!"



## Illinois budget cuts bring forward unionization plans

KYLE STEPP  
Alestle Reporter

In light of the alarming budget crisis in Illinois, SIUE professors are looking unionize. Nearly 400 tenure-line professors have formed the Faculty Association and are looking to join the Illinois Education Association. With Gov. Bruce Rauner's proposal to cut millions of dollars from Illinois higher education, SIUE faculty is looking to form a group that is more than advisory to administration.

Linda Markowitz, SIUE Faculty Association co-chair, said one part of the plan to unionize is to give faculty a stronger voice in the university's budgetary decisions. The other is adding organized pressure to ensure state support for public higher education.

"Essentially, with tenure, we have job security. However, not if there is financial exigency," Markowitz said. "The governor wants to cut around 30 percent of funding this fiscal year and even more next fiscal year. If that happens, programs may be cut. When that happens, the administration can lay off any employees in those programs, including tenured faculty. If we have a union, we will have a voice in determining which programs get cut, if any. When it comes down to it, this is a way to ensure that faculty voices are heard and [the faculty] are part of the decision making process in SIUE's fiscal future."

With SIUE currently having a temporary chancellor and provost, Markowitz said the time is right for professors to do anything to bolster their standing with future administrations.

"This administration, our interim chancellor [Stephen] Hansen and our interim provost [Denise] Cobb, are excellent. However, they are both interim," Markowitz said. "We have no idea who is going to come next and while we believe that the current administration has the heart of students, faculty and staff in their decision making, we just don't know if that will be true in the future. A new administration may be forced to do things it doesn't want to do. If so, organized faculty have a stronger voice to advocate quality education, the main tenet of SIUE's mission. And by joining with coalitions of other unions and the universities, we can make it harder for the governor to force the administration to do things that aren't in the best interests of our students."

Charles Berger, SIUE Faculty Association co-chair, agreed with Markowitz and said the idea to unionize is in reaction to the state withholding a budget.

"Our organizing effort comes primarily in reaction to what is going on in Springfield,

where the Higher Ed budget is being held hostage. SIUE has already experienced some serious cutbacks and budget realignments. At present, we have an excellent administration, and they have handled the budget crisis in a fair manner and have consulted with us along the way. But who knows what the future holds in terms of further reductions? These could easily create long-term damaging effects for faculty and students on this campus. As faculty members, we are particularly responsible for maintaining the educational excellence of this institution, and we feel that we need an even stronger role than shared governance gives us in a time of crisis. We need a contractually stipulated role in decision-making and that's what a faculty union will provide."

Michael McDermott, director of higher education at the Illinois Education Association, said the budget crisis has all but forced the faculty to develop a voice against Rauner and his cuts to higher education.

"The situation in the state makes it necessary to organize so faculty here can carry out SIUE's mission. The state's failure to support higher education with necessary funding is forcing campus administrators to take measures that negatively impact SIUE faculty, staff and its students," McDermott said. "Everyone at SIUE has the common goal to hold the state accountable to its responsibilities. Public higher education faculty, staff, and our students who depend on the MAP grants are all apparent last priorities of the governor," McDermott said.

The SIUE Faculty Association has already been chartered by the IEA, so the next step is for the faculty to petition the Illinois Educational Labor Relations Board in order to be recognized by the state and university as the exclusive bargaining representative. An election can be conducted if collected signatures of the employees in the bargaining unit exceeds 30 percent. The faculty have already surpassed that requirement.

However, according to McDermott, faculty at SIUE will wait until they secure more than 50 percent of faculty signatures in order to assure a more powerful voice for the union and to become automatically recognized by the labor board without the need for an election.

"If you have more than 50 percent of the bargaining unit sign the interest form, then the state automatically recognizes the group. We could have an election anytime because we are over the 30 percent mark, but we will be looking for over half of the faculty's signatures so we can become recognized automatically," McDermott said.

Kyle Stepp can be reached at [kstepp@alestlelive.com](mailto:kstepp@alestlelive.com) or 650-3525.

## Grant gravitates toward revamping science education

MADISON O'BRIEN  
Alestle Reporter

NASA has awarded SIUE \$11.5 million for the purpose of expanding its citizen science education.

Pamela Gay, assistant research professor for Science, Technology, Engineering and Math, will oversee the expansion of the program as the principal investigator for a second-generation citizen science facility called CosmoQuest.

According to Gay, CosmoQuest is a virtual research center designed to assist NASA scientists in exploration of our universe.

"CosmoQuest is designed to meet people's specific needs," Gay said. "So much data is coming from NASA, so now people who have always dreamed of exploring space can do so in their spare time."

Gay said the money awarded goes toward salary, software, equipment and the researchers coming to SIUE to assist with CosmoQuest.

Gay said she was honored to win the award, and it means she gets to keep doing what she loves to do.

"The idea we put forward was novel and useful, and can advance science in a useful way," Gay said. "The grant shows that SIUE proves to be competitive at a national level."

Associate provost for research Jerry Weinberg said the recognition for receiving this award all goes to Gay because the award recognizes her work in science

and connections to well-known institutions.

"Dr. Gay has done amazing work in science education and astronomy," Weinberg said. "Her work is bringing people into science and also involves the public because she [finds] ways to bring scientific results to educate the public."

Weinberg said his job is to make sure the environment within the institution is one where faculty and staff can develop their work and write competitive proposals.

He also oversees the spending done on the grant, so staff can focus on their work instead of state regulations.

"I worry about regulations and all the details with administration, which helps take a burden off of faculty working on the project," Weinberg said.

According to Weinberg, it is important to focus on how it feels to win the award regardless of the amount of money granted.

"Winning an award in general is amazing, but winning a large award like this one brings a higher level of recognition not only to my staff, but the institution as well because we can say NASA has invested in the work we do here," Weinberg said. "It brings high recognition to SIUE and acts as a catalyst to recruit faculty and students here because we are doing cutting edge work, and it feels great."

Weinberg said he believes he won the award over other institutions due to our faculty mem-

bers and their level of expertise and knowledge.

"I create an environment faculty can flourish in, but ultimately their knowledge and how they use it to come up with ideas is what got us the grant," Weinberg said.

CosmoQuest's educational lead Georgia Bracey said she was extremely excited SIUE received the grant.

"It is getting harder and harder to get grants, and it was a nice surprise to win this award," Bracey said.

According to Bracey, her role in CosmoQuest is to oversee the educational components of project.

"This is a large project with many different pieces of work," Bracey said. "We will do work with teachers and develop a new curriculum that will bring CosmoQuest into the classroom."

Bracey plans on creating new lesson plans for the classroom, while also taking time to train teachers to use CosmoQuest.

"We really want to get teachers involved in projects, so they can bring excitement to students and the community, and that's what makes up the citizen science aspect," Bracey said.

The grant money received will allow Bracey's area to hire individuals to help develop curriculum. Money will also go toward stipends for teachers who participate in the professional development of CosmoQuest.

Read more about the NASA grant at [alestlelive.com](http://alestlelive.com).

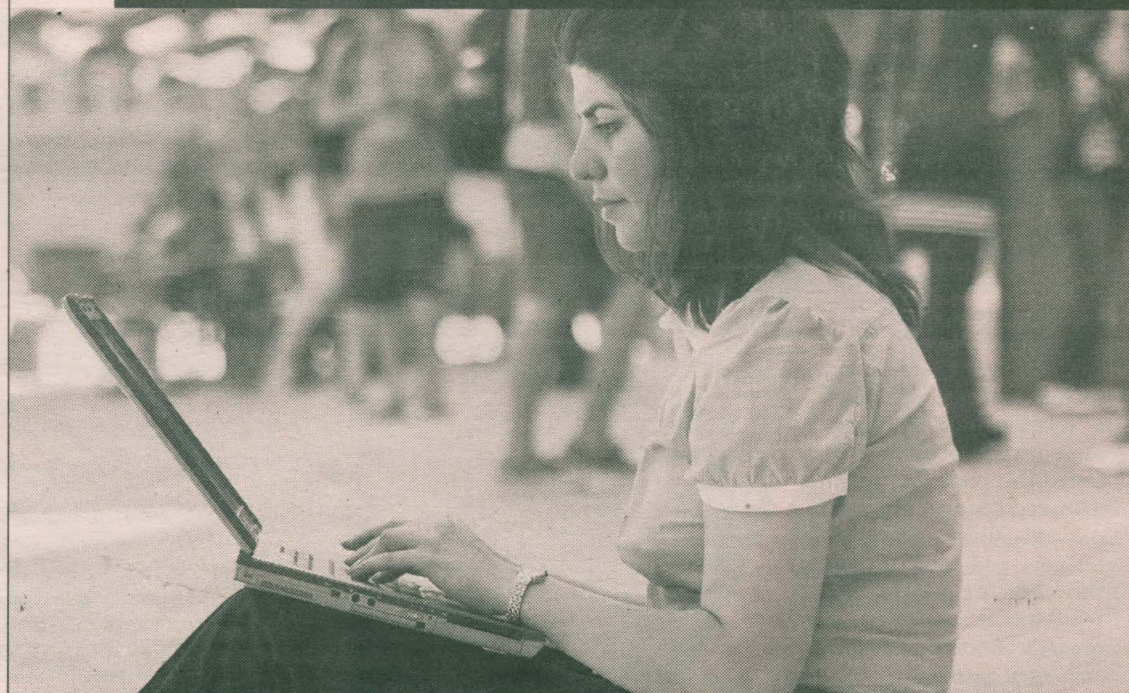
## PROGRESS UNINTERRUPTED!

Take online summer courses at SIU Carbondale's College of Business to stay on track or graduate sooner. Our core business courses are completely online; credits are transferable.

We are among the world's top 5% of business schools and AACSB-accredited.

Call 618/536-4431 or visit us online at: [business.siu.edu/sum16](http://business.siu.edu/sum16)

SIU SOUTHERN ILLINOIS UNIVERSITY  
CARBONDALE COLLEGE OF BUSINESS



Follow @thealestle on Instagram!





# A LONG, HOT SUMMER:

## Professors find link between climate change, homicide rate

**KENDRA MARTIN**  
Alestle Reporter

Beginning with simple conversations about the impact of climate change, political science associate professor Kenneth Moffett and criminal justice associate professor Dennis Mares have been conducting a study that shows how climate change can affect homicide rates since 2014.

During their study, Moffett said their results showed an increase in homicide for each degree Celsius in all countries they researched.

"[Mares] and I have been talking about this on and off for a while, so we ran a study on homicide [rates] across 57 countries worldwide to find out the changes and how temperature affects homicide rate," Moffett said. "Each degree Celsius [showed an] increase in homicide [rates] by 6 percent."

Moffett said they were able to compose their data from various sources to receive their necessary results.

"We compiled the data from a number of sources," Moffett said. "Some were from the Global Network, National Oceanographic Administration and also homicide data from the United Nations, so we had a number of things that we took to look at to receive the data we needed."

Mares and Moffett studied two theories, the routine activities theory and the heat aggression theory. Moffett said he noticed the effects these theories had on their research.

"There were two different theories such as the routine activities theory, which is when the temperature increases, the more people there are out and about," Moffett said. "Also, there is the heat aggression theory, and what that argues is: as temperature increases, the more aggressive people get. So it manifests higher homicide rates and certain crimes become a seasonal pattern."

Moffett said the reason for conducting this research was to see if there was actually a connection between climate change and homicide.

"We were just trying to find out if there was a relationship," Moffett said. "Some people have tested this concept, but in a limited context. We went out and gathered much better data and came up with the results we got."

Moffett said he was particularly shocked with the results they received.

"The magnitude of the results was more than we expected," Moffett said. "Going in, we didn't expect nearly this magnitude, so it strikes me that we can specify different factors that changes throughout the years or countries, and we cannot be certain that all cases will turn out the same."

Moffett said he hopes people understand that climate change does have an immense effect on homicide, and that people become more aware of the activities in which they choose to involve themselves.

"It's more so that the moral human beings should think about the activities that they involve themselves in because there are consequences," Moffett said. "The results aren't going to be what they think they are; as the temperature increases, then you are going to get the consequences."

Mares said he and Moffett sought out to compile data not only from the United States, but also from around the world to see how they compare in regard to climate change and homicide.

"The things we set out was to see what impact of climate change had in relation to homicide," Mares said. "Most of the studies we looked were at specific places, such as international locations."

Mares said they researched different locations around the world including seven to eight different countries

in Africa, such as Egypt and South Africa. The two researchers noticed that the locations they researched reacted differently to climate change.

"Depending on where you are, there are higher effects," Mares said. "We looked at Africa and Latin America, which was unusually high. The United States was in the middle as far as our results, and Europe and Russia had no effect with climate change. Although the Africa data is limited since we only researched a small sample, we can do this data again in 10 years and see what changes."

Mares said he and Moffett looked to see which theories related to their research the most.

"Crime rates vary throughout the years," Mares said. "We noticed some interesting theories relating crime rate to climate change. One theory said the hotter it gets, the more aggravated people get. Another theory was the routine activities theory that says the nicer it is outside, people's activities tend to change, and we wanted to study to see which theory was the most valuable one and it was definitely the routine activities theory."

Mares said he enjoyed working together with Moffett on this project.

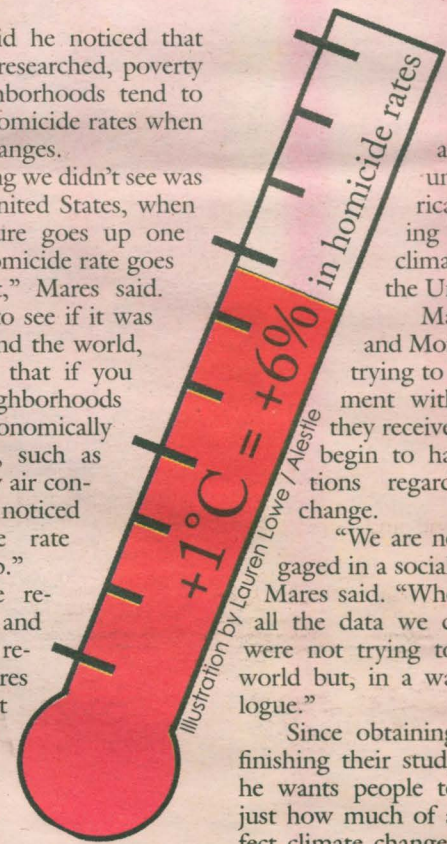
"We have an overlapping interest," Mares said. "He is more so of a statistical magician. I mean, I can do it but he does it in a way that is to marvel at, but this type of research is more common in my field, so I compiled the data and did a final overlap of the data."

Mares said he noticed that in areas they researched, poverty stricken neighborhoods tend to have higher homicide rates when the climate changes.

"One thing we didn't see was that in the United States, when the temperature goes up one Celsius the homicide rate goes up 2 percent," Mares said. "We wanted to see if it was like that around the world, so we found that if you look at neighborhoods with socioeconomically disadvantages, such as areas with few air conditioning, we noticed the homicide rate tends to go up."

With the results Mares and Moffett had received, Mares said he was not surprised by the data they obtained, but found it interesting.

"Oddly enough, I wasn't hugely shocked by the results we got," Mares said. "Africa, however, was unusually high with a 17 percent increase in



homicides, but the way we were looking at the data, we understood Africa was not going to get much climate change as the United States."

Mares said he and Moffett were not trying to start a movement with the results they received, but in fact begin to have conversations regarding climate change.

"We are not always engaged in a social movement," Mares said. "When looking at all the data we compiled, we were not trying to change the world but, in a way, spark dialogue."

Since obtaining results and finishing their study, Mares said he wants people to understand just how much of a negative effect climate change can have on the world.

"It is our duty to point out the negative affects of climate changes because it is like a living disease," Mares said. "We are trying to make it clear that climate change is a bad thing, and it is set to make [conditions] worse for people. Poor people are going to continue to get screwed over while the rich can just turn on their air conditioning and go on about their day."

Mares and Moffett's research was published in the "Climatic Change" journal, which is the leading climate change specific journal.

Kendra Martin can be reached at kmartin@alestlelive.com or 650-3525.



Criminal justice associate professor Dennis Mares, political science associate professor Ken Moffett | Photo courtesy of SIUE Marketing



# MARCH 2016

## Divine Nine go toe-to-toe at annual step show

MICHAEL ORANIKA  
Alestle Reporter

The National Pan-Hellenic Council has planned Marchdown, a step show competition in which the university's Divine Nine Greek organizations will light up the stage for first place.

According to senior biology major and president of Zeta Phi Beta Amanda Randall, of Chicago, it's one of SIUE's biggest shows.

"Marchdown is a great step show that we have every single year," Randall said. "It's probably one of the best shows that SIUE [students] can possibly see."

Randall said she and other event organizers are expecting a sizable crowd this year.

"Hopefully there will be a full house," Randall said. "Last year we had people standing up in the back; it was definitely full. A lot of people tend to buy the tickets at the door on the day of the show, and a lot of people came last minute."

Marchdown will be held Friday, March 25, in the Morris University Center Meridian Ballroom. Doors of will open up at 7:30 p.m. Tickets are currently on sale at the MUC welcome desk at \$10 for general admission and \$7 for Greek organization members.

According to Randall, VIP seating — which can be purchased for \$15 — is optimal for the best Marchdown experience.

"It's closer; you get right up close and personal; you get right by the judges. If a performer jumps down from the stage, they'll come right at you."

Randall said her sorority has been practicing its step routine since January.

"Everybody's show is theme-



Marchdown 2015 | Alestle File Photo

based," Randall said. "Everything they have going on in there, the audience will be able to follow by visual aides, videos, voice overs and stuff like that. They'll be doing the unique for 15 minutes."

According to Randall, a lot of effort went into both preparations for the step show and for their step routines.

"It's a really important show," Randall said. "It's one of the NPHC's biggest events, so it's mandatory for us to do it, but if we're going to do something, we're going to do it for real."

Randall said the money is going toward the National Pan-Hellenic Council, the council to

which all Divine Nine Greek organizations report.

According to senior nursing major Genella Dalys, of Chicago — who is also vice president and NPHC has events planned next week leading up to Marchdown such as a preview for the event Thursday in the Meridian Ballroom.

Dalys said all the groups performing at the competition are SIUE students.

According to Dalys, there will be a first and second place category for both fraternities and sororities.

"We have judges, one representing each part and then two

non-Greek judges that kind of go off scoring sheets," Dalys said. "They look at things like creativity, all-around precision and difficulty."

Junior business administration major Qualin Redd, of East Saint Louis, said his group is ready to unveil their performance to the audience.

"We're coming to take the trophy," Redd said. "When I say we, I mean Phi Beta Sigma, Inc. We're coming to win; we're not coming to play no games. [Our] game faces will be on."

Michael Oranika can be reached at moranika@alestlelive.com or 650-3525.

# DOWN

arts & issues  
Season 2015-2016

Free tickets for SIUE students! Visit the MUC Welcome Desk.

**R. Buckminster Fuller:**  
*THE HISTORY (and Mystery) OF THE UNIVERSE*  
written and performed by D. W. Jacobs  
from the life, work and writings of R. Buckminster Fuller  
**Friday, April 1, 2016, 7:30 p.m.**  
Center of Spirituality & Sustainability, SIUE

This critically acclaimed solo show is about the man best known as the Leonardo da Vinci of the 20th Century, grandfather of the sustainability movement and PR man to the universe.

For information and to buy tickets visit [artsandissues.com](http://artsandissues.com) or call 618-650-5194.

SOUTHERN ILLINOIS UNIVERSITY EDWARDSVILLE COLLEGE OF ARTS & SCIENCES

LIKE US  
THE ALESTLE news  
sports lifestyles opinion  
SIUE COUGARS  
entertainment Campus Life  
EDWARDSVILLE  
View from the  
LIKETHETHE ALESTLE  
alestlelive

www.facebook.com/Alestlelive



Express your opinion 24 hours a day, seven days a week. Polls, message boards and more at [www.alestlelive.com](http://www.alestlelive.com)

# OPINION

Questions or comments regarding this section? Contact the Opinion Editor at 650-3527 or [opinion@alestlelive.com](mailto:opinion@alestlelive.com)

8 // The Alestle

[www.alestlelive.com](http://www.alestlelive.com)

Thursday, March 24, 2016

Alton - East St. Louis - Edwardsville  
the **ALESTLE**

**Nicholas Agadi**  
Advertising Manager

**Brittany Cox**  
**Bryce Radick**  
**Christal Sampson**  
**Kat Pate**  
Front Office

**Cody King**  
Opinion Editor

**Caillin Lally**  
Lifestyles Editor

**Christian Lee**  
Photo Editor

**Lauren Lowe**  
Graphics Manager

**Puja Mehta**  
Managing Editor

**Tammy Merrett**  
Alestle Program Director

**Kalli Morris**  
Online Editor

**Brian Muñoz**  
**Christian Sykes**  
**Lashal Spencer**  
Photographers

**Elizabeth O'Donnell**  
Chief Copy Editor

**Mady O'Reilly**  
Editor in Chief

**Kelly Pfaff**  
Advertising Consultant

**Jeff Reul**  
Writers' Coach

**Chloe Rice**  
**Kendra Martin**  
**Kyle Stepp**  
**Madison O'Brien**  
**Michael Oranika**  
Reporters

**Chloe Smith**  
Copy Editor

**Angie Trout**  
Office Manager

**Dani Wilson**  
Sports Editor

Letters to the Editor Policy:

The editors, staff and publishers of the Alestle believe in the free exchange of ideas, concerns and opinions and will publish as many letters as possible.

Letters may be submitted at the Alestle office located in the Morris University Center, Room 2022 or via e-mail at [opinion@alestlelive.com](mailto:opinion@alestlelive.com).

All hard copy letters should be typed and double-spaced. Letters should be no longer than 500 words. Include phone number, signature, class rank and major.

We reserve the right to edit letters for grammar and content. Care will be taken to ensure that the letter's message is not lost or altered.

Letters to the editor will not be printed anonymously except under extreme circumstances.

We reserve the right to reject letters.

**CYBAM** **ap**  
ASSOCIATED COLLEGIATE PRESS

**KCPA** **SPLC**  
SOUTHERN PRESS LAW CENTER

The name Alestle is an acronym derived from the names of the three campus locations of Southern Illinois University: Alton, East St. Louis and Edwardsville.

The Alestle is published on Thursdays in print and on Tuesdays online during the fall and spring semesters. A print edition is available Wednesdays during summer semesters.

For more information, call 618-650-3528.

For advertising, email [advertising@alestlelive.com](mailto:advertising@alestlelive.com).

Have a comment? Let us know!  
[opinion@alestlelive.com](mailto:opinion@alestlelive.com)

The Alestle  
Campus Box 1167  
Edwardsville, Ill. 62026-1167

SHENEMAN THORPE CONTENT AGENCY



## 'Everything's bigger in Texas': Restrictions on women's reproductive rights heighten

Women's reproductive rights are under fire as the Supreme Court is set to hear the biggest abortion case of the decade — Whole Women's Health v. Hellerstedt. The last big abortion case was in 2007.

### Alestle Staff Editorial

Critics of Texas' restrictive abortion laws claim these laws put "undue burden" on a woman's right to choose. We believe this is a fair and accurate allegation considering the extent to which these laws have affected Texas women.

According to The Huffington Post, women's healthcare providers say the Texas abortion regulations don't improve medical safety, but instead reduce access to the procedure.

These women's healthcare providers backed up their claims by saying Texas has forced approximately 75 percent of facilities that perform abortions to close and have barred new ones from opening, severely limiting women's access to these clinics.

Besides closing so many clinics, Texas Planned Parenthood's website states clinics have been forced to stop many medical abortions, or the abortion pill, which is basically a medically-induced miscarriage.

By law, women attempting to get an abortion in Texas are required to get an ultrasound 24 hours before the abortion, something Texas' Planned Parenthood said they fought against "because there is no medical reason for requiring women to come 24 hours in advance" because there is always an ultrasound performed before any procedure.

Texas' Women's Right to Know Act also mandates that women are required to be given additional, state-mandated information on the developmental stages of the fetus, as well as more information on the medical risks of having an abortion after receiving their ultrasound. They then have to wait 24 hours before getting the procedure done.

Although information is never a bad thing, women are already informed of the risks by PP staff prior to deciding to get an abortion, and these regulations are stressing women out over an already difficult choice, making them overthink and question their decision to end their pregnancy.

These restrictions, and the lack of abortion clinics in the state, have forced Texas women to travel across state lines or even attempt to perform their abortion themselves by buying the abortion pill online.

This is dangerous, considering some of these medications might not work properly when bought through an unlicensed source.

This is ridiculous; abortion laws should never be so restrictive that women are desperate enough to try and have an abortion without a medical professional's help.

According to Oyez, a free law project at the Chicago-Kent College of Law that provides a multimedia archive of Supreme Court cases, in the landmark 1973 abortion case Roe v. Wade, women's right to an abortion fell within the right to privacy, which is protected by the Fourteenth Amendment.

Yes, there are some restrictions that are not necessarily bad, such as girls under the age of 18 cannot get an abortion without the written consent as well as proof of identification of a parent or guardian.

However, the rest of the restrictions are severely interfering with a woman's constitutional right to privacy, including receiving an abortion if she so chooses, and her right to make decisions regarding her own body.

With the death of Supreme Court Justice Antonin Scalia's death, who would have likely voted to keep the restrictions, the court's decision might end

in a 4-4 tie, keeping these overly restrictive laws in place in Texas, further suppressing women's constitutional rights.

However, this might be a good thing if a Democrat were to be elected, as it would mostly likely end 5-4, in favor of lifting Texas restrictions.

The Supreme Court should be defending women's constitutional rights, not taking them away. We need to stand by our women and defend their constitutional rights.

Abortion is like any other law in America: It should never be placed at the mercy of radical judges or wanton policymakers looking to exploit the passions of either side of an issue simply to gain political favor.

Abortion as it stands should remain free of any court challenges. Any change to the national policy on abortion should come only from the duly elected members of the United States Congress.

This goes for anything — from abortion to gun rights — and all Americans should concern themselves with the habit of our government abusing the legal system to cowardly change laws. This circumvents the will of the people and negates elections.

Read more about women's reproductive rights at [alestlelive.com](http://alestlelive.com).

## Make school more enjoyable, find your safe haven

As I sit in my favorite coffee shop, Jeremiah Joe, in my hometown of Ottawa, I reminisce about all the memories I have made in this place.

**Chloe Rice**  
Alestle Reporter

Not only is it my favorite place to get coffee — yes, it is better than Starbucks — it is also my favorite place to do homework, have conversations and meet new people.

The baristas basically know my order by heart, and I see familiar faces every time I walk in. Over the past few years, especially in high school, this place has become my safe haven, and still is even though I am now three and a half hours away from home.

From my own experience, having a safe haven is more than just a place I like to go. A safe haven is a place, public or private, where

stress doesn't affect that person, even though it is prevalent.

Our country is not currently being invaded, so we students don't need a place of security to hide from a war zone. However, as students, we need a place of security away from thoughts of school, relationships, work and even family.

The American College Association conducted a survey and found that anxiety is found in 41.6 percent of college students, along with depression at 36.4 percent and relationship problems at 35.8 percent. These statistics may reflect the pressure college students feel to earn good grades, keep a job and maintain a social life. Either way, these statistics are too high.

Although the severity of these disorders differ, having a relaxing place to think can help students cope with stress. I feel this is very important for college students. Most of us do

not have time to sit and relax, but that is not necessarily what a safe haven has to be. One can sit in their safe haven and do homework, but instead of the homework stressing them out, the safe haven makes the homework more appealing.

Although most students' lives revolve around school, a safe haven can also be used as a place to relax. For example, you can go and listen to music, but also plan out your entire month. This way, you are incorporating a fun way to get through daily tasks.

You may have already picked your spot on campus that makes you feel safe and helps you de-stress. If so, share that with your friends, or help them pick their spot. If you haven't found your "safe haven" yet, try and look for one, and see if it helps free you from the dreariness of day-to-day tasks.

Read more about safe havens at [alestlelive.com](http://alestlelive.com).

Get your name in the paper without the court date.

Write a letter to the editor.

Send letters to [opinion@alestlelive.com](mailto:opinion@alestlelive.com).



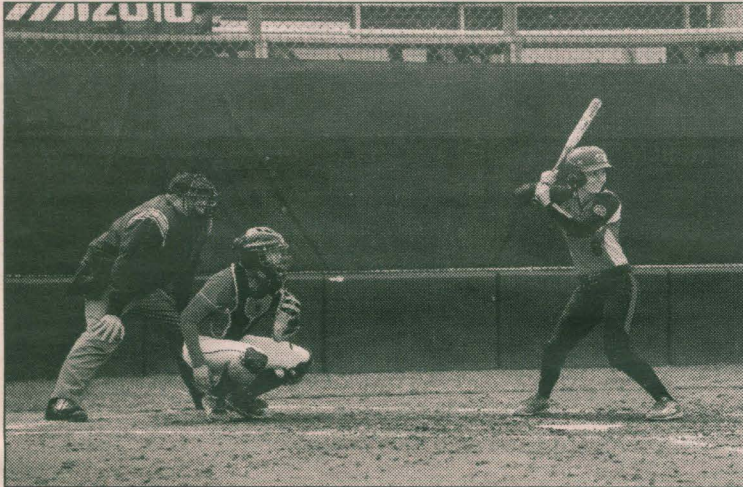
# SPORTS

Questions or comments regarding this section? Contact the Sports Editor at 650-3527 or sports@alestlelive.com.

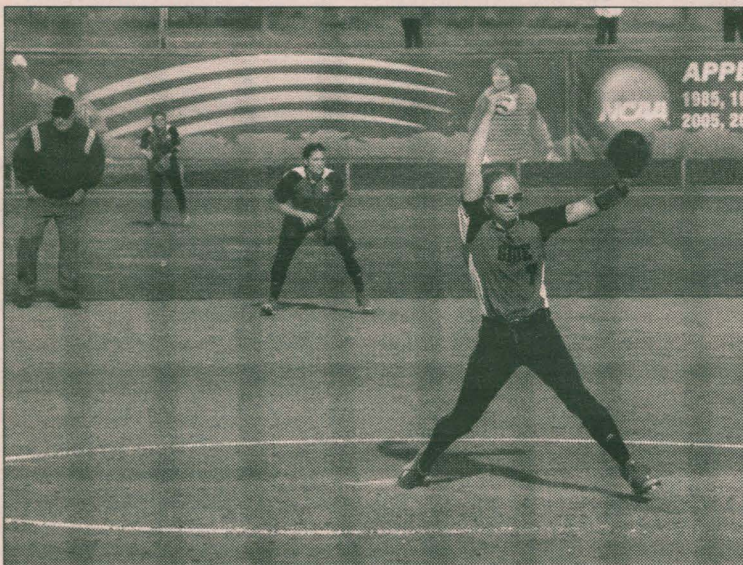
Thursday, March 24, 2016

www.alestlelive.com

The Alestle // 9



Sophomore infielder Haley Adrian smiles at teammates as she prepares to bat at the SIUE Softball team's game against Austin Peay State University Sunday, March 20, at Cougar Field. | Brian Muñoz/Alestle



Sophomore pitcher Baylee Douglass throws a pitch in a home game against Drake University Wednesday, March 16. | Christian Sykes/Alestle



Junior infielder Allison Smiley is up to bat for the Cougars in a home game against Austin Peay Sunday, March 20. | Christian Sykes/Alestle

## Cougars battle back to win home opener

KYLE STEPP  
Alestle Reporter

After playing 16 games of the season on the road, the softball team won its first home game with a walk-off win against the Drake University Bulldogs Wednesday, March 16.

Freshman outfielder Alyssa Heren hit the top of the right field fence to bring home sophomore utility player Talisa Morton in the bottom of the ninth inning. Heren picked up her third game-winning RBI this season.

Head Coach Sandy Montgomery said, with so many close games, it was good to see the Cougars get their first win at home.

"We've lost a lot of one-run ball games. Obviously, the kids played hard today, so I'm happy they got the win," Montgomery said.

Sophomore pitcher Baylee Douglass started the home opener for the Cougars and pitched in her eighth game of the season. Douglass allowed two runs in the first inning, striking out two batters as well. The Cougars were unable to answer in the first inning.

Junior catcher Amy Hunt picked up the Cougars' first hit with one out in the bottom of the third inning. Hunt floated a line drive over the Bulldogs' first baseman, and reached base with a single. Sophomore utility player Talisa Morton drew ball four on a full count, but the Cougars were unable to take advantage of runners in scoring position and ended the inning with two pop-ups.

Heren said Hunt's triple was a crucial part of the Cougars' first home victory.

"[Hunt] came up really big today. She laid down a triple that put us in a good position for the middle of the game. [Hunt] gave us the lead, and we had a lot of momentum going into the next few innings," Heren said.

The Cougars answered in the bottom of the fourth inning when junior infielder Allison Smiley singled down the left field line. The next batter, sophomore utility player Tess Eby, singled to right field. Smiley reached third on a Bulldog error, and senior infielder Rachel Keller walked to load the bases with no outs.

Sophomore infielder Haley Adrian was walked and brought Smiley home. After a Cougar strikeout, Hunt cleared the bases with a triple to give the Cougars a 4-2 lead heading into the fifth inning.

With a run in the top of the fifth and sixth innings, the Bulldogs tied the game at four runs apiece. With a runner in scoring position, Douglass was able to get out of the jam with a strikeout for the final out of the inning.

Sophomore pitcher Ashley Koziol took over the final inning of regulation. After a groundout, Koziol struck out the Bulldogs' batter and forced another groundout to end the inning. The Cougars' offense popped up for three straight outs in the final inning of regulation to send the game to extra innings.

Morton hit a single in the bottom of the ninth inning, but reached second on an error. Heren hit a double off the top of the fence to drive Morton and end the game.

Due to inclement weather, the three-game series against Austin Peay State University was postponed to a game at 1 p.m. Sunday, March 20 and a doubleheader at 1 p.m. and 3 p.m. Monday, March 21.

The Cougars dropped the OVC home opener on Sunday, March 20 in a 2-0 shutout.

Associate Head Coach Jessica Jones said, despite a strong warm-up, the Cougars were not able to carry that to the game.

"We didn't have it today. We had a very good warm-up, and we didn't transition it to the game. We weren't aggressive when we needed to be," Jones said.

The Cougars bounced with a doubleheader sweep Monday, March 21 to take the series 2-1. Douglass and Koziol took the victories on the mound and both picked up their fourth win of the season.

SIUE took the first game with a 6-0 shutout. Douglass struck out seven hitters and forced the Governors to strand 11 base-runners. On top of her first-game performance, Douglass earned her second save of the year as she pitched the final two innings of game two.

Montgomery used her third lineup in three games, and said she is trying to find a lineup that produces runs every game.

"We're trying to get some things going offensively. We have a lot of kids who can swing the bat well. We just can't seem to find a consistent lineup where everybody is putting some swings together at the same time. We're just going to keep mixing things up until we find something that works," Montgomery said.

Six runs in two innings helped the Cougars beat the Governors 8-5, and take the series 2-1.

Heren led the Cougars with three of the team's eight hits, and Eby got the offense started with a homerun in the first inning.

The Cougars will hit the road and take on Tennessee Technological University in a doubleheader Friday, March 25 and then head to Jacksonville, Ala. for another double header against Jacksonville State University Sunday, March 26.

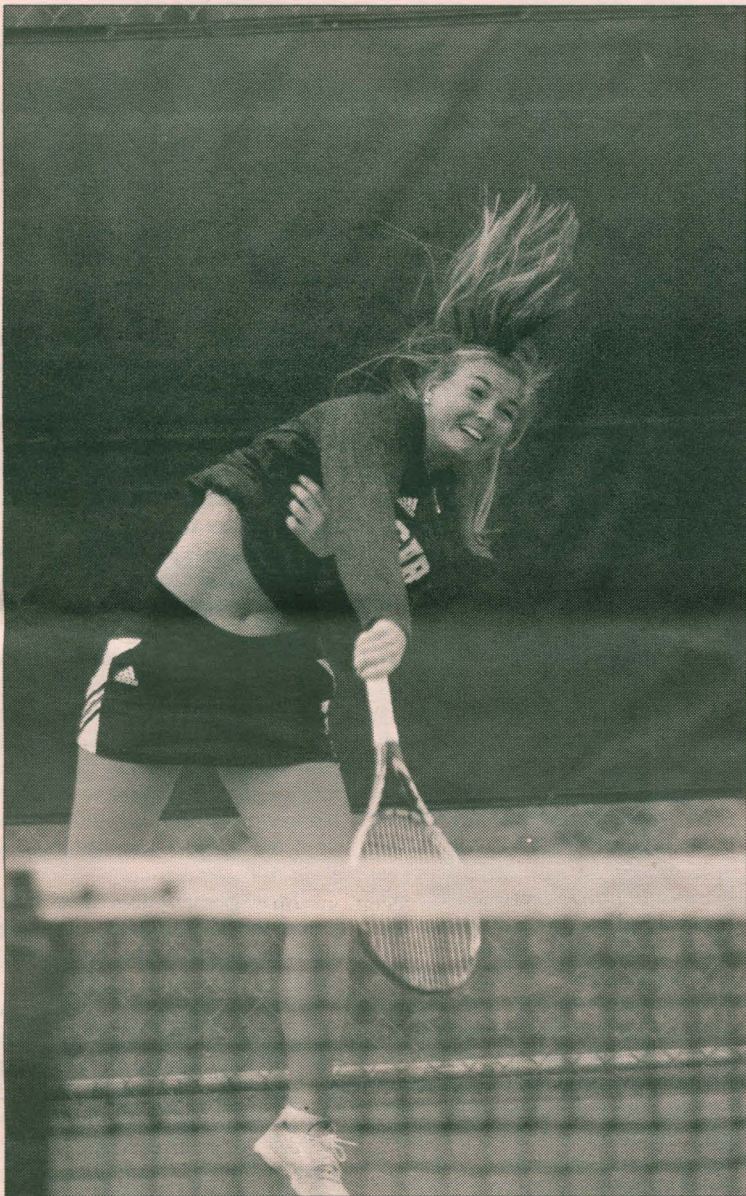
Kyle Stepp can be reached at kstepp@alestlelive.com or 650-3525.



Members of the softball team meet in a huddle to discuss their game plans against Austin Peay State University Sunday, March 20, at Cougar Field. | Brian Muñoz/Alestle



# Women's tennis starts conference play with 1-1 record after home weekend



Junior Mia Frogner dishes out a serve during her doubles competition Friday, March 18th against UT Martin. Frogner and her partner, freshman Madeline Hill, defeated their opponents, closing the match with a score of 6-2. | Lashai Spencer/Alestle

**CHLOE RICE**  
Alestle Reporter

The women's tennis team started the conference season with two matches at home. In the first match Friday, Mar. 18, the Cougars faced the University of Tennessee at Martin and finished with a 4-3 loss.

According to Head Coach Nick Mueller, home matches are great regardless of whether they match is conference or non-conference.

"Last weekend was our first home conference matches, which is always exciting. It is basically like you are starting a new season when you start your conference season. We happen to be starting our conference season at home, which is nice," Mueller said.

Mueller said UT Martin was a tough opponent to start conference with, but will help the team to be ready for future conference matches.

"We have been doing well overall; we had an eight and three record going into last Friday against UTM, and UTM is a solid opponent, so it forces us to be ready right out of the gates," Mueller said.

Freshman Madeline Hill and junior Mia Frogner won No. 1 doubles with a final score of 6-2.

According to Frogner, her backhand helped with her performance.

"I felt ready to play because we have been basically practicing all year to start conference, so it was fun to finally start. I felt that the team did well in both matches, and we got one win, which was great," Frogner said.

Along with winning doubles with her partner, Hill swept No. 3 singles by defeating her opponent, UT Martin's Burcu Tari, in the first two matches.

Hill said, although the team did not capitalize in certain areas, she felt as if her single matches went very well.

"I felt good [going into this weekend's matches]; you just have to go in with the most positive attitude and just give your best effort, and the cards fall where they will," Hill said.

Other highlights of the day included junior Lexi Aranda's win against UT Martin's Sarah Candeloro at No. 1 singles. Also, senior Monique Krutak won both her matches for No. 4 singles.

Although the Cougars took a one point loss on Friday, they proved their capabilities Saturday Mar. 19 with a 6-0 win of Southeast Missouri State University.

Frogner and Hill once again won No. 1 doubles by winning both of their matches. Along with their win, both Frogner and Hill won their single matches as well. Frogner won two out of three of her matches at No. 2 singles against SEMO's Isabella Krupa.

Frogner said despite some early nerves, she was pleased with her performance from the weekend.

"I felt like I played well. I was a bit nervous in both of my matches, but in both of them I played better and better, so that was good," Frogner said.

Hill also won both of her matches at No. 3 singles against SEMO's Mila Maitan.

According to Hill, she is working on better backhand volley, but regardless, she was still pleased with her performance this weekend.

"This weekend the best [thing] I did was controlling things that I could control. Whether things were going on around the court that were distracting or tough things in my match, I just did my best to stay positive and control my attitude and effort," Hill said.

Aranda and freshman Morgan Steffes won two out of three of their matches at No. 3 doubles. Aranda also won both of her matches at No. 1 singles.

Krutak won both of her matches at No. 4 singles and freshman Ann-Christine Link won two out of three of her matches at No. 5 singles.

Mueller said there were a few things that could have been changed about the weekend matches that might have altered the Cougars' results.

"We would have liked to be 2-0, but we were 1-1 this past weekend. We lost a tough one to UT Martin 4-3. I think the girls understand if we are not playing our best, then we can easily lose to a conference opponent," Mueller said.

The Cougars will travel this weekend to face Austin Peay on Friday, March 25 and Murray State University on Saturday, March 26.

Chloe Rice can be reached at [crice@alestlelive.com](mailto:crice@alestlelive.com) or 650-3525.

## An Important Message About Gas Safety

Natural gas is delivered to the University from Ameren IP through an underground piping system. It is used to provide fuel for clean efficient heat to all campus buildings and residence halls. It is also used for hot water and food preparation.

### Overview of Hazards of Pipeline and Prevention Measures Used

The hazards associated with the pipeline include fires, explosions, leakage, damage to the facility and loss of gas service. In order to prevent these incidents the pipeline is maintained and inspected according to state and federal regulations. Facilities employees receive ongoing training to ensure the continued safe transport of natural gas to the campus.

In order to prevent damage to the pipeline due to construction excavations SIUE participates in the one call system known as JULIE. Within 2 days of a call for a planned excavation SIUE will mark the location of underground gas as well as other utility lines.

### Recognizing and Responding to Gas Leaks

Pure natural gas is colorless and odorless. Before gas is delivered to the SIUE campus, an odorant called mercaptan is added to give gas its distinctive odor so you can smell a leak immediately. The odorant makes the gas smell like sulfur or rotten eggs.

If you smell a faint gas odor in any campus building notify facilities management at 3711. If the gas odor is strong and or you hear a hissing or leaking sound, you should leave the building immediately. If the odor is strong:

- Do not use telephones, cell phones, computers, or elevators.
- Do not smoke, use a lighter, match or open flame
- Do not operate vehicles near where the leaking gas could be
- Do not re-enter the building to retrieve personal affects.

If you smell a strong gas smell in the air outside, or you see unusual occurrences such as: high pitched-whistle or hissing sound, blowing dust, dead vegetation in a normally green area, or ground fires, you may be observing signs of a leak in a natural gas line. Always use caution near an outdoor gas leak and recognize the possible hazards, such as fire, ignition or explosion.

In these conditions:

- Do not use any device or equipment that may generate a spark or flame
- Do not start up or shut down motor vehicles or electrical equipment.
- Do not use a telephone or cell phone in or near the area.

In either case notify Facility Management at 3711 or call 911 after 4:30 pm.

## Cougar victory marks first of the season

**KYLE STEPP**  
Alestle Reporter

The baseball team picked up its first win in the final inning of a Wednesday, March 16 game against the University of Evansville Purple Aces.

Head Coach Tony Stoecklin said the Cougars came together and won a game not only against the Aces, but the weather too.

"I'm pleased with what we did today — up and down the lineup. I thought the guys swung the bat extremely well. The pitcher did [his] job, which wasn't easy with the howling out to right field," Stoecklin said. "We did give up some runs, but we made them swing the bat. Our offense and defense went out and did their jobs, and we picked up the win."

Evansville took an early lead, scoring four runs on five hits in the first inning of the game. The Cougars tried to make a comeback in the inning as freshman infielder Logan Andersen hit a midfield single. SIUE was unable to convert, as junior infielder Keaton Wright hit a pop fly out to left field, and sophomore outfielder Dustin Woodcock struck out to retire the inning.

The Cougars got on the board in the bottom of the second inning after senior infielder Jacob Stewart reached first on an error by the Purple Aces. Freshman catcher Brock Weimer was walked on the next at bat. Stewart was batted in

by junior infielder Alec Skender. Weimer was brought in by junior utility player Kailer Smith on the next play. The Purple Aces retired the side, but not before the Cougars could pull within two runs.

Aces infielder Trey Hair hit a two-run homer late in the third to put the Aces up by four. The Cougars answered in the same inning as Stewart drove in Wright and Woodcock. Skender was the next at bat, and singled to left field to bring Stewart home. The Cougars ended the three-run inning down 6-5.

After a solo homerun by the Aces, Weimer started the bottom of the sixth inning at the plate for the Cougars. Weimer was walked and advanced to third on a double by Skender. With two runners in scoring position, Smith grounded out, but not before Weimer reached home. Anderson grounded out at the next at bat, and Skender advanced home to tie the game at seven.

The Aces hit one of their six home runs in the top of the seventh. Woodcock responded with a single to lead off the inning. Stewart was walked on four balls. Freshman infielder and outfielder Jackson Layton laid down a textbook sacrifice bunt down the left field line, putting Woodcock and Stewart in scoring positions.

Read more about baseball online at [www.alestlelive.com](http://www.alestlelive.com).



# Fahy, Rodriguez compete in NCAA Div. I Championship at Madison Square Garden

**CHLOE RICE**  
Alestle Reporter

Junior 125-pounder Freddie Rodriguez and senior 149-pounder John Fahy both succeeded at the 2016 Arby's Southern Conference Championship, which led them to the NCAA Division I Wrestling Championship on March 17-19 at Madison Square Garden in New York City.

Both Fahy and Rodriguez are transfer students, so it was their first time representing SIUE wrestling at the NCAA Division I Wrestling Championship.

According to Head Coach Jeremy Spates, it is their goal to have All-Americans and national champions, so it was a good exposure having Rodriguez and Fahy go.

"It was a pretty neat experience just being in Madison Square Garden. It's probably the biggest sports venue in the world, so going out to New York City and being a part of the whole thing was really a good experience for the guys," Spates said.

According to Rodriguez, he tried not to think about the tournament too much, but worked as hard as he could before his match.

"Mentally, I just didn't think about it and physically I just worked as hard as I could. That's where my confidence came from was in my work ethic," Rodriguez said.

Rodriguez said he tried to keep his normal routine before the

match started because he wasn't sure what to expect.

"When we first got there, I didn't know what to expect. I had been there and watched but I had never been [a] behind-the-scenes part of the tournament. It was just a learning experience, and I was mainly focused on not really getting lost in it, but living in every moment that I could and just

from the national championships. Spates said Fahy didn't wrestle like he wanted to or was expected to.

"We all felt that John [Fahy] could wrestle better than his results. I think the environment, being in that big time arena, got to him a little bit, so he was a little bit timid, but he wrestled hard in his matches," Spates said.

ana's No. 16 seed Elijah Oliver on Friday.

However, Rodriguez was defeated by No. 8 seed Barlow McGhee of Missouri 9-5.

Spates said Freddie had a good shot to be an All-American; however, he lost to the No. 2 seed in his first match.

"He wrestled hard and competed the whole way through —

Rodriguez said his goal is and always will be to receive the title as national champion.

"I was a redshirt most of the year, so I wasn't really competing, but once it was pulled, it was an expectation and a goal, and my expectations and goals didn't just stop at qualifying for national. I wanted to be an All-American or national champ, and I firmly believe I had the capability to do so, I just came up a little short," Rodriguez said.

According to Fahy, being an All-American national champion has been a goal of his since he transferred to SIUE.

"I think this past year was a little up and down; I had some great matches and then I just needed more great matches, so I had some to find that consistency so I can be more confident in the way I wrestle," Fahy said.

Spates said they will have two returning national qualifiers from this year and three with Jake Tindle qualifying two years ago, which will bring high expectations for the team as a whole.

"I think overall as a team we will be a lot better, and I think there will be some pretty high expectations on those coming into the season," Spates said.

**“ It was a pretty neat experience just being in Madison Square Garden. It's probably the biggest sports venue in the world, so going out to New York City and just being a part of the whole thing was really a good experience for the guys.**

Jeremy Spates  
SIUE Wrestling Head Coach

embracing every moment being in the tournament," Rodriguez said.

Fahy said he was excited to qualify for nationals, but the excitement was short-lived because he needed to regain the mindset of competing.

"The atmosphere was crazy; it was a huge area with a lot of people. It was probably the most people I have ever wrestled in front of. It was kind of intimidating, honestly," Fahy said.

Fahy wrestled No. 4 seed Matthew Cimato, of Drexel, and was defeated 9-3. He also lost by 1:03 fall against Buffalo's Colt Cotton. These two losses eliminated Fahy

Fahy said he didn't wrestle the way he expected himself to but believes he was ready for the match.

"I was really confident in all the training that we did. I thought I was well-prepared. I think it just came down to the moment when I stepped on the mat to wrestle, [and] the pressure and the gravity situation was a little overwhelming," Fahy said.

Although Fahy was knocked out after the first day, Rodriguez advanced to the next round of the tournament on Friday, March 18.

Rodriguez won against Virginia's Nick Hermann 4-3 on Thursday and won against Indi-

even in the matches he lost. He was shooting and trying to score," Spates said.

According to Rodriguez, there were a few areas where he could have performed better, but he was overall pleased with his performance at nationals.

"I thought I wrestled well. The way I see it is if you wrestle every single second of every single match as hard as you can and come up short, there is nothing to be ashamed of. That is what I was focusing on, coming out and wrestling a hard seven minutes every single match no matter what the outcome was," Rodriguez said.

Chloe Rice can be reached at [crice@alestlive.com](mailto:crice@alestlive.com) or 650-3525.

**FRESH.  
FAST.  
TASTY.**



**SERIOUS DELIVERY!™**  
★ JIMMYJOHNS.COM ★

TO FIND THE LOCATION NEAREST  
YOU VISIT JIMMYJOHNS.COM



**PICK UP A  
TRANSFERABLE CLASS  
ONLINE THIS SUMMER!**

**SUMMER  
CLASSES**

- ◆ Business
- ◆ Humanities
- ◆ Communications
- ◆ Math
- ◆ Science

**CONVENIENT**

- ◆ Easy to transfer
- ◆ Save money with textbook rental & affordable tuition
- ◆ Flexible schedule

**VIEW THE  
SCHEDULE AT**

**[lakelandcollege.edu](http://lakelandcollege.edu)**  
Summer term begins  
June 6. Interterm  
begins May 16.

**LAKE LAND  
COLLEGE**



## ALESTLE CLASSIFIEDS GIVE YOU MORE

Place your classified ad at a time convenient for you using our easy and secure online interface at: [alestlelive.com/classifieds](http://alestlelive.com/classifieds)

### Deadlines:

By noon Sunday for Wednesday issue  
Having trouble?  
Call 618-650-3528 or e-mail [classifieds@alestlelive.com](mailto:classifieds@alestlelive.com)

### Alestle Office Hours:

**MUC 2022**  
8 a.m. - 4:30 p.m.  
Monday-Friday

### HELP WANTED

#### Part time summer help

Mostly yard work and assisting in minor home renovations. Flexible hours to meet your schedule.

#### Email

[citygraphics@swbell.net](mailto:citygraphics@swbell.net)

### FOR RENT

#### Town Home For Lease

Two bedroom, 1.5 bath, 1 car garage. All appliances including dishwasher and disposal. W/D hookup, off street parking. \$825 security deposit and credit check required.

\$825/month. No pets.

Look us up on Facebook at Liberty Creek Properties.

618-779-9985

Email [kellikurtz13@yahoo.com](mailto:kellikurtz13@yahoo.com)

2BR 1.5BA Townhomes. \$710mo includes washer/dryer in unit, water, sewer and trash service.

No smoking. No pets.

Onsite owner/maint.

618-931-4700

[www.fairway-estates.net](http://www.fairway-estates.net)

### MISCELLANEOUS

Legal Questions?

Contact Student

Legal Services

Attorney Dennis Orsey

at 618-797-2800.

Free consultation for all

SIUE enrolled students.

	7		8	2		
4	3		5			
9	8		6		4	5
					6	3
			9			
8		9				
5	1		3		6	4
			1		2	9
		6	8		1	

## Wordsmith

### INVESTIGATOR

Big Picture Thinker

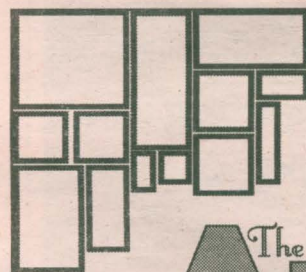
### INFO DISTILLER



We Are Hiring Reporters!

Apply at

Morris University Center  
Room 2022  
Monday - Friday



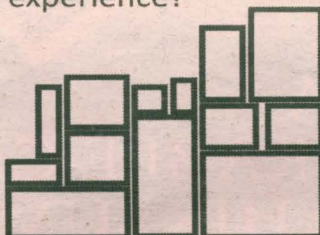
## The ALESTLE IS LOOKING FOR AD CONSULTANTS

Are you outgoing, personable, reliable and a highly motivated person?

Want to earn commission and gain valuable work experience?

Come to Our Office to Apply!

Morris University Center  
Second Floor Room 2022



## ADVERTISE YOUR EVENTS WITH US!

Submit your events for FREE  
visit [www.alestlelive.com/calendar](http://www.alestlelive.com/calendar)



# SUMMER SESSION



Hit the books and the beach this summer!

- More than 1,000 classes
- More online classes than ever before
- Most classes meet for five weeks or less

Lighten your class load for fall, stay within your course sequence and benefit from smaller class sizes. If you choose to study on campus this summer, SIUE provides discounted housing.

Register Now!  
[siue.edu/summer](http://siue.edu/summer)

SOUTHERN ILLINOIS UNIVERSITY  
EDWARDSVILLE

