

University Archives (02)  
Campus Box 1063

# the **ALESTLE**

Alton - East St. Louis - Edwardsville

October 9, 2014

Vol. 67 No. 9

## INSIDE THE ISSUE:

ITALIAN COMEDY  
MEETS MODERN  
TWIST IN FIRST  
FALL THEATER  
PRODUCTION  
PAGE 6

MEN'S SOCCER  
TAKES FIRST PLACE  
IN CONFERENCE  
AFTER WINNING  
HOMECOMING GAME  
PAGE 8

# CAMPUS KITCHENS

works to end hunger  
in local communities

Page 2

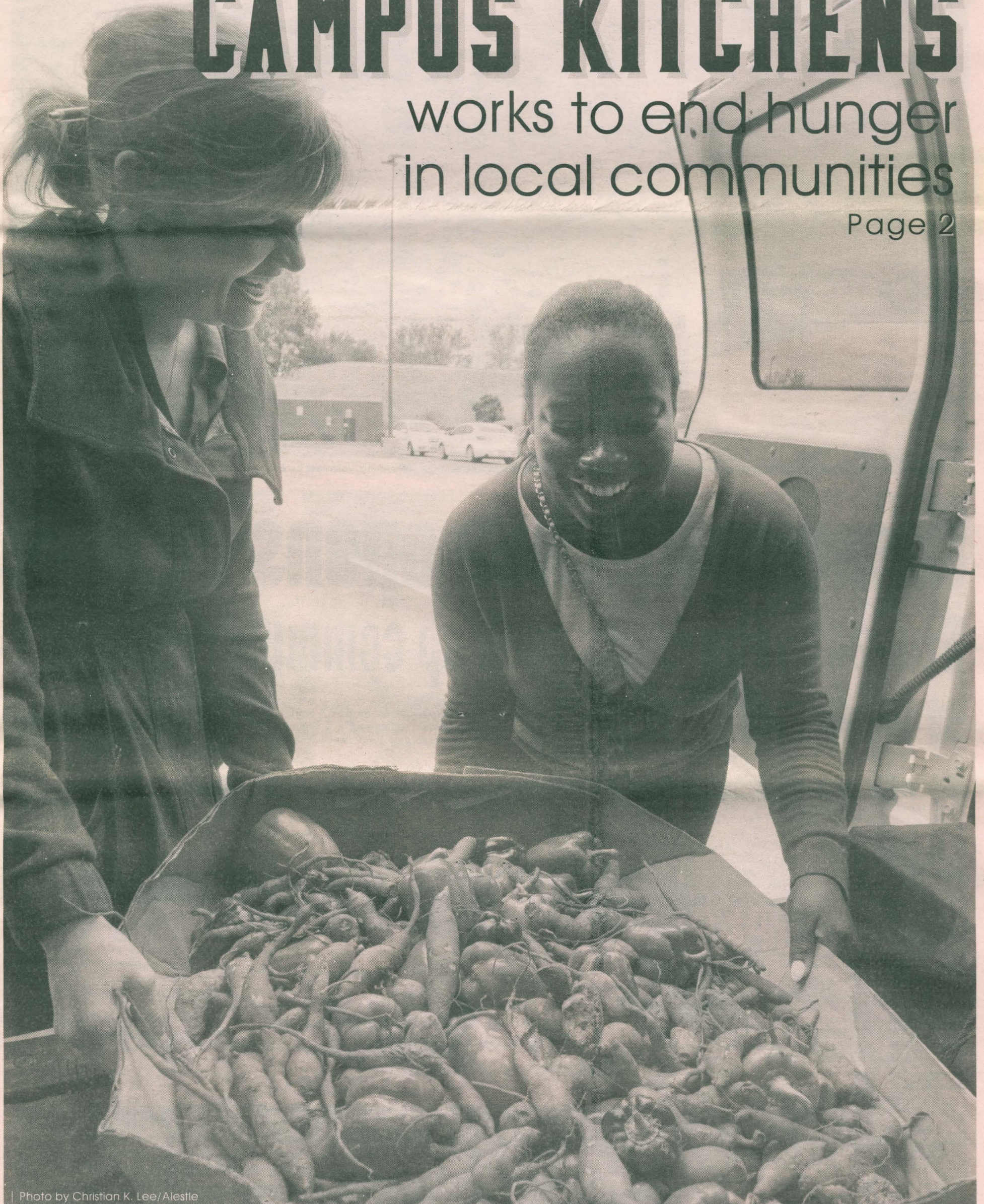


Photo by Christian K. Lee/Alestle



ALESTLELIVE.COM



@THEALESTLE



THEALESTLE



FACEBOOK.COM/ALESTLELIVE



On the cover:

Graduate assistant Katie Veys, of Omaha, Neb., and junior community health major Love Adantor, of Togo, West Africa.

# NEWS

Questions or comments regarding this section? Contact the Managing Editor at 650-3527 or news@alestlelive.com.

2 // The Alestle

www.alestlelive.com

Thursday, October 9, 2014



Graduate assistant Katie Veys, of Omaha, Neb., and junior community health major Love Adantor, of Togo, West Africa, volunteer by preparing food in the Campus Kitchen.

| Photo by Christian K. Lee/Alestle

## Campus Kitchen opens at SIUE Student volunteers cook up community support

PUJA MEHTA  
Alestle Reporter

Campus Kitchen has finally opened, and it is already making a lasting impact, according to Campus Kitchen staff adviser Sarah Laux.

Because “fighting hunger is essential to the overall success of a community,” according to Laux, Campus Kitchen works through nonprofit agencies that work closely with families and individuals who are experiencing poverty, hunger and food-access issues.

Campus Kitchen volunteer Amanda Lands, a senior environmental sciences major from O’Fallon, Ill., shed light on the impact the organization is making.

“I think that all people, regardless of social statuses or circumstances, deserve to have a good meal because we all share humanity,” Lands said. “It’s super special to have someone cook for you. You just don’t know how it’s going to affect somebody. It may just be a bowl of soup to somebody, but to someone else, it may be the thought that even though this person doesn’t know me, because we share this humanity, they want to make sure I have a brighter day.”

Campus Kitchen shift manager Stephanie Bargiel, a senior chemistry major from Granite City, most enjoys the emotional gratification of the volunteer project.

“It is a very enriching experience,” Bargiel said. “The first week, the kids were timid, as we were a group of strangers coming to feed them, but by the second and third week, they knew we were coming back and they knew we were making healthy, kid-friendly food. So, definitely by weeks three and four, these kids were excited. They anticipated us!”

According to Bargiel, Campus Kitchen targets a certain group of people.

“Campus Kitchen in general focuses on people who are below the poverty line,” Bargiel said.

According to Laux, the Campus Kitchen project has one main objective.

“The main purpose of the Campus Kitchen at SIUE — and nationwide — is to fight hunger in our local com-

munity and provide a resource where food access is limited,” Laux said. “Even if we can only provide one meal to five people each week, we’ve accomplished something.”

Laux said as the number of volunteers and donors increase, Campus Kitchen hopes to grow.

“We are certainly hoping to expand eventually. There is certainly a community need we can fulfill,” Laux said. “The details of this will rely on the amount of food donations we receive and number of volunteers we have to help us achieve this goal.”

For the time being, Campus Kitchen has been working with families in East St. Louis.

“Right now, we are focused on East St. Louis, at the Sunshine Cultural Arts Center. It’s basically an after-school program for kids from 3-8 p.m.,” Bargiel said. “Before we started going, these kids only received a small snack, like a granola bar, during this time. Now, we are able to go there once a week and provide a delicious meal, that includes a protein, a starch, a vegetable, and a dessert.”

“We serve about 50 people a week, and we’ve served

bination of the both. I do think that as we grow, it’s only going to be the next step,” Bargiel said. “I would say our biggest goal is making Campus Kitchen a student run organization, and then have those students that participate be able to create a program that is sustainable and successful. We want something that is able to grow, but that is also sustainable.”

Although volunteer based, Campus Kitchen requires money to function.

“We were able to receive two grants: one through the Meridian Foundation at SIUE for \$5,000, and we received one through a voting poll from Campus Kitchen, which was a \$10,000 grant,” Bargiel said.

Lands played an integral role in the application for the grant process. She contributed by creating the informational video that was part of the application process for a scholarship pole to receive the grant from Campus Kitchen.

The money Campus Kitchen obtained is used for funding various necessities for the kitchen.

“The grant money we receive is used for things like transportation food carriers, kitchen utensils and food that is needed for cooking that is not donated to us from our donors,” Bargiel said.

However, the usage of the grant money is kept to a minimum, according to Lands.

“We have the grant money for things we may need, but we really try to be sustainable off of the things that are donated to us,” Lands said. “In the last couple of cooking shifts, we’ve spent a miniscule amount of the grant money.”

Not only is Campus Kitchen putting forth its best effort to utilize grant money wisely, the organization is also responsible for using the food donated to them from three locations to create several different types of meals.

“We reached out to local businesses through letter-

“The main purpose of the Campus Kitchen at SIUE...is to fight hunger in our local community...”

Sarah Laux  
Campus Kitchen staff adviser

about 200, some recurring, people all together. As you can imagine, 50 people per week for a year — that’s a lot of people.”

In the long run, Campus Kitchen has several ambitions.

“Our goal is to eventually provide either multiple meals to one place, multiple places with a meal, or a com-



## KITCHENS | from pg.2

writing," Bargiel said. "But if someone is already donating [to another nonprofit organization], we do not take from their donations. Right now our main donors are La Vista, in Godfrey, which is a community farm, the restaurant Cleveland-Heath, and a little bakery in downtown Edwardsville called A Little Taste of Heaven."

These donors provide food in several different ways. According to Lands, La Vista provides Campus Kitchen with produce.

"A lot of the volunteers go there and pick the potatoes and other vegetables right out of the ground," Lands said.

The other donors provide the excess food that they will not be able to use before the expiration date.

"The [food] waste is just outstanding, in the most horrific way," Bargiel said. "And we are able to provide these delicious meals from food we get that would have been thrown away."

However, despite the financial and sustainability obstacles with such a huge proj-

ect, according to Laux, Campus Kitchen continues to directly impact the lives of several families.

In order to fulfill its targets, Campus Kitchen relies on its donors and its volunteers. According to Bargiel, these volunteers are people from our very own campus.

"Volunteers come from all over the university," Bargiel said.

The volunteers have many responsibilities.

"There aren't people there to take care of the behind-the-scenes things. The volunteers are really expected to take the reigns," Lands said. "They really do encourage every volunteer to take on as much as they can."

Although each volunteer has a lot of weight to pull, Lands enjoys being part of the group.

"Before it opened, I envisioned an outpour of volunteers. However, now that we're open, you realize that you don't have that volume of people, but you do have a certain quality of people," Lands said. "It's an intimate environment and your role re-

ally counts. I've never been part of a volunteer group that is so valued."

According to Bargiel, the volunteers' responsibilities can vary.

"There are basically four shifts you can do: pick-up shift, where people go to some of the places that donate to us," Bargiel said. "For example, La Vista allows us to glean their fields, and we can pick fresh vegetables. The next shift is processing, where you can cut up the vegetables. The third shift is cooking. And the fourth shift is delivery. With delivery, we are actually [at Sunshine Cultural Arts Center] to serve them for about an hour, and after an hour, we pack up and leave some of the food so adults can eat after we serve the kids."

Junior social work major Ashley Heater, of Carbondale, believes in the nobility of this organization's cause and was even compelled to volunteer.

"I think it's awesome, especially because it's students getting involved. Honestly, if I knew about it, I would participate in it," Heater said. "I would probably like

to do the serving because you actually get to see the people you're helping and that would be a really good feeling."

Campus Kitchen aims to fight hunger. "We continue to learn and experience new things to make Campus Kitchen better with each shift," Laux said.

Not only are they working hard to reduce hunger, Campus Kitchen goes above and beyond to make sure those they help are satisfied.

"We make sure that we put in our all and it's always our best effort, every time," Lands said.

Volunteers can sign up online at [ck-siue.campuskitchens.volunteerhub.com](http://ck-siue.campuskitchens.volunteerhub.com).

People who want to donate can also make donations of things such as canned goods or boxed mixes to Campus Kitchen by contacting Sarah Laux at [slaux@siue.edu](mailto:slaux@siue.edu).

Puja Mehta can be reached at [pmehta@alestlelive.com](mailto:pmehta@alestlelive.com) or 650-3525.

# University takes action against sexual assault on campus

MICHAEL ORANIKA  
Alestle Reporter

SIUE takes the initiative to discuss sexual assault awareness and precautionary approaches on college campuses.

"Campus Sexual Assault" was a discussion presented by the Office of Equal Opportunity and Access and Title IX Coordination. Director of the Office of Equal Opportunity and Access and Title IX Coordinator Chad Martinez hosted this event Thursday, Oct. 2, in Peck Hall.

Martinez, who previously served as equity officer in Saint Louis University's Office of Institutional Equity and Diversity, was invited by the Women's Studies Department to speak to students about his department's efforts to bring awareness to the dangers of sexual assault on col-

lege campuses and different preventative approaches and resources that can be pursued by its victims.

Martinez kicked off the discussion by pointing out a few important gender equality laws and important events that defined the aspects of modern day sexual assault. Martinez began by chronicling gender equality laws to his age and life events such as the Title IX Act of 1972, which came out the year he was born.

This law prohibits discrimination based on sex in any federally funded activity. Martinez also pointed out the Jeanne Clery Disclosure of Campus Security Policy and Campus Crime Statistics Act, which came out in 1990, his freshman year of college. This act is a landmark federal law that requires the publication of crime data that occurs on university campuses after the murder of

Jeanne Clery, a freshman who was raped and murdered in her university residence hall.

Martinez spoke about the importance of statistics in sexual assault. According to his presentation, 99 percent of all perpetrators of sexual violence are men, however, 5 percent of all men in the U.S. are perpetrators of sexual violence.

He wrapped up the discussion by stating ways in which SIUE can prevent sexual assault.

"A big part of it is raising awareness so that everyone understands the importance of consent," Martinez said. "We have to create an atmosphere in which the culture is respectful to each other."

While Martinez stated that he has not noticed a big problem with sexual violence on the SIUE campus in his three months as Director of the Office of Equal

Opportunity, he emphasized his passion for spreading awareness and increasing prevention.

"Preventing sexual assault is definitely something I've dedicated my career to working on so I would absolutely say that I'm passionate about it," Martinez said. "I haven't noticed a big problem with sexual assault on campus, but I don't want to downplay the fact as it might be a direct result of victims being silent."

Students present, like junior criminal justice major Bianca Newell, of Chicago, did not see sexual violence as a big problem on the SIUE campus.

Newell said she has never been a victim of sexual assault, nor has she ever witnessed it on the SIUE campus.

"I personally don't see sexual assault as being a big problem on campus because I never hear

about it," Newell said. "Part of the reason might be victims being too scared to say anything about it, but since I don't see it or hear about it, I don't see it as a big problem."

Newell said one of the resources on campus that could be utilized for victims of sexual violence is campus police.

Another student, junior public relations major Rachel Schuman, of Springfield, Ill., said she felt completely safe on the SIUE campus.

"I feel pretty safe on campus. It's just really calm and serene, nothing violent ever really happens," Schuman said. "A resource that I would pursue in the case of sexual assault would probably be the campus police, that's all I really know of."

Read more about sexual assault prevention at [alestlelive.com](http://alestlelive.com)

## — NOTICE —

The Fall 2014 issue of the  
SIUE Annual Security & Fire Safety Report  
is now available on-line at:

<http://www.siue.edu/securityreport>

The report contains campus safety and security information and crime statistics for calendar years 2011, 2012 and 2013; as well as fire prevention and safety information and fire statistics for 2011, 2012 and 2013.

This report is published in compliance with the Federal Student Right to Know and Campus Security Act of 1990, now known as the:

**Jeanne Clery Disclosure of Campus Security Policy and Campus Crime Statistics Act**

And the Higher Education Opportunity Act also known as the:

**Campus Fire Safety Right to Know**

The report is also available for review at the Lovejoy Library Circulation Desk on the Edwardsville Campus; the Biomedical Library Circulation Desk on the Alton Campus; the SIUE Satellite Police Station at the East St. Louis Higher Education Center; the SIU Medical Library at the SIUE Springfield School of Nursing and the Morris Library Circulation Desk on the Southern Illinois University Carbondale campus.

For those without computer access, a paper copy may be obtained upon request to:

**Office of the Vice Chancellor for Administration  
Rendleman Hall, Room 2228, Campus Box 1158**

**618.650.2536**

**(24-hour Notice Required)**



## Student Government approves new campus organizations to increase, inspire involvement

CAITLIN GROVE  
Alestle Lifestyles Editor

The opportunity to bring specialists in certain fields to campus, which not only benefits the particular major, but the university as a whole was discussed as Student Government met Friday, Oct. 3.

The Percussion Club of SIUE submitted a program request to hold a clinic performance by internationally recognized marimba artist Nancy Zeltsman. Classes would

be held March 22-24, with a performance on the final day 7:30 p.m. in Dunham Hall Theater.

Student Body President Nasir Almasri said while this event caters to a particular audience, it is important to give out funding to programs like this in order to have a diversity of events offered to students.

"In the past, we would ask, 'How is this getting out to the entirety of the student body?'" Almasri said. "I think we are starting to understand a little

better that it's OK to have events that target certain groups, as long as you can prove you are drawing in some other crowd."

This request was approved for \$2,120.

Almasri said it is planning on holding a brainstorming reception for the upcoming Multicultural Center to explain the reasoning behind the center's creation. This event will be open to staff, faculty and students.

"We want to know what our diversity center should look like. What are the needs that we

have; what are suggested solutions and what are the top five must-haves," Almasri said. "We want to get the whole university drawn in and say, 'We are going to have a Multicultural Center; what do you want to have in your center?'"

Student Body Vice President Tyler Shearrow announced the appointments to new subcommittees within SG. The first of these is a smoking committee, which Shearrow said should gauge student opinion as it relates to the new law and how it is going to affect students next year.

Other subcommittees created include the SG engagement committee; the Tunnel of Oppression Committee, which helps organize the Tunnel of Oppression event SG puts on in the spring; Election Manual Revision Committee; and the Bylaw Revision Committee.

Four student organizations underwent constitution reviews during this week's meeting. The Environmental Sciences Student Organization of SIUE, a returning organization, was tabled due to no representative being present.

The second of these was the Chess Club of SIUE. This club is a new addition that will not only allow avid chess players to play, but will also teach new members the game.

Cougar Creative, a new organization, will provide marketing research and advertising opportunities for students.

Finally, the Archery Club had similar goals to the Chess Club. It plans to not only perfect the skills of current archers, but also teach new members the sport.

A travel request was submitted by the Intervarsity Christian Fellowship organization to attend a chapter focus week May 10-16. This weeklong conference would train current students to become leaders within the organization and the university. This request was approved for \$600.

SIUE's Student Chapter of the National Art Education Association submitted a travel request to attend the Illinois Art Education Association "The Visual Lens: Connect-Reflect-Empower" educational conference, Nov. 6-8. This request was approved for \$600.

A travel request was submitted by the SIUE Student Chapter of Engineers Without Borders USA to attend the EWB-USA National Conference, Oct. 31-Nov. 2. This request was approved for \$600.

Eta Sigma Gamma was approved \$600 for a travel request to attend the Mid-America College Health Association Annual Meeting, Nov. 5-7.

SG will hold its next meeting at 2 p.m., Oct. 17, in the Student Success Center Room 1203.

Caitlin Grove can be reached at  
cgrove@alestlelive.com or 650-3525.

## SIUE POLICE BLOTTER

10-1-14

Officers responded to the Student Fitness Center for a report of several students having a verbal altercation with the assistant director.

Officers responded to a report of subjects smoking cannabis in a car parked in front of 505 Cougar Village in Lot 5D. Keeri L. Heupel and John A. Hodge were arrested for possession of cannabis and drug paraphernalia. Heupel and Hodge were transported to the SIUE Police Department where they were processed. Both subjects were released with notices to appear.

A 911 caller reported a group of 10 males and several females with tasers and knives fighting in Woodland Hall circle entrance parking lot. The caller said they tried to attack him so he called 911. The caller was told to go to his dorm room and lock himself inside until the SIUE Police Department arrived. Officer contacted the individuals involved, and an investigation is currently being conducted.

10-3-14

A prior theft victim found her stolen bike and another bike being spray painted outside of Bluff Hall. The victim confronted the subjects and confiscated both bikes.

Officer took a walk-in report regarding a resident of Prairie Hall advising her ex-boyfriend keeps knocking on her residence hall door.

Officers responded to 416 Cougar Village for a report of an unruly male who jumped from the balcony after his friends attempted to keep him from leaving the residence. The officers found the subject at The Gardens and transported him back to the residence.

Officers arrested Morris Middleton Jr. for theft and criminal damage to property. Middleton was transported to the SIUE Police Department where he was processed. Middleton was unable to post bond and was transported to the Madison County Jail the next day.

An officer en route to Cougar Village saw two subjects who appeared to be intoxicated, walking along Cougar Lake Drive. The officer arrested Christopher Reed for illegal consumption of alcohol by a minor, and Logan Weis was arrested for illegal possession of alcohol by a minor. Reed and Weis were taken into custody and transported to the SIUE Police Department to be processed. Each were given a notice to appear and transported to his residence hall.

10-4-14

A parent requested a welfare check at Prairie Hall for a student who had not returned home at a designated time. An officer located the resident in another room and contact was made with the parent.

A 911 caller reported a stalled

vehicle in the road and the driver appeared to be intoxicated. Officer arrested Rutger E. Neece for a DUI. Neece was transported to the SIUE Police Department where he was processed. Neece was also issued a citation for improper parking in the roadway. Neece posted his driver's license and \$100 bond and was released.

10-5-14

A circulation desk clerk called about a report of people having sex on the second floor of the Lovejoy Library. She went to the second floor but did not see or hear anything. An officer responded and checked but did not find anyone engaged in sexual activity.

An officer issued Theodore Harris Jr. a citation for speeding 51 mph in a 35 mph speed zone. The offense occurred on North University Drive at P3 Road.

10-6-14

An officer observed two subjects smoking cannabis on the walking path between Prairie and Woodland Halls. Christopher T. Wright and Cameron T. Dean were arrested for possession of cannabis. Both subjects were transported to the SIUE Police Department where they were processed and given notices to appear.

10-7-14

An officer responded to Bluff Hall for a report of possible drug activity. Officers contacted several male subjects who were exiting the woods. They all denied smoking cannabis.

Subject accidentally left his birth certificate on the copier at the Library yesterday. When he returned to retrieve it, it was gone.

Glen Carbon picked up Ashley N. Beal on SIUE for failure to appear, battery and cause bodily harm warrant. She was transported to SIUE PD. Beal was served with the warrant and was processed. Beal was unable to post the \$3,000 bond and was arraigned before a judge at the Madison County Court House.

Officer met with a student behind the Bio-Fuel Research Lab to take a report of a stolen ladder. The ladder was 10-foot aluminum chained to a tree with a bike lock behind that building. It was there on Wednesday, Oct. 1, and gone when she returned.

Caller reported a two vehicle accident in the Birger Hall parking lot. A white Buick LeSabre backed into an orange Ford Explorer. Emma L. Christensen was issued a state citation for no insurance and a written warning for improper backing.

Written warning issued for Improper Lighting on Bicycle on North Circle at North University.

Officers checked near the woods by Cougar Village Building 524 for a report of several individuals who went back there. Officers advised that no one was in the area.



Cougar Kids

Saturday  
October 11

"Fall Into  
Winter"



The Saint Louis Zoo will  
explore how animals  
prepare for the winter!  
Kids have the chance  
to meet live animals  
and make a craft!

12-2pm  
MUC: Mississippi  
Illinois Room

"Good help is so hard to find!"  
Carlo Goldoni's

Servant

of

Two Masters

OCTOBER 15-18

at 7:30 pm

OCTOBER 19

at 2:00 pm

Box Office

618-650-2774

Dunham Hall  
Theater

TICKETS!

\$12 & \$10

SIUE Students Free  
Compliments of CAB

Department of Theater & Dance  
SIUE

Poster Design: Lisa Hinrichs  
Servant Image: Dr. Laura Hanson

2014



Express your opinion 24 hours a day, seven days a week. Polls, message boards and more at [www.alestlelive.com](http://www.alestlelive.com).

# OPINION

Questions or comments regarding this section? Contact Opinion Editor at 650-3527 or [opinion@alestlelive.com](mailto:opinion@alestlelive.com).

Thursday, October 9, 2014

[www.alestlelive.com](http://www.alestlelive.com)

The Alestle // 5

## the ALESTLE

Hailey Huffines  
Editor in Chief

Mady O'Reilly  
Managing Editor

Ben Levin  
Sports Editor

Caitlin Grove  
Lifestyles Editor

Michelle Yee  
Chief Copy Editor

Puja Mehta  
Michael Oranika  
Reporters

Nathan Sierra  
Cody King  
Elizabeth O'Donnell  
Copy Editors

Amanda Turner  
Online Editor

Christian Lee  
Photo Editor

Nicola Batista  
Lashai Spencer  
Adam Mason  
Photographers

Melissa Wilcox  
Advertising Manager

Jeff Reul  
Writers' Coach

Katlyn Michael  
Fernando Jacinto  
Advertising Consultants

Brittany Cox  
Lydia Hawkins  
Office Secretary

Debbie Roberts  
Office Manager

Tammy Merrett-Murry  
Alestle Program Director

### Letters to the Editor Policy:

The editors, staff and publishers of the Alestle believe in the free exchange of ideas, concerns and opinions and will publish as many letters as possible.

Letters may be submitted at the Alestle office located in the Morris University Center, Room 2022 or via e-mail at [opinion@alestlelive.com](mailto:opinion@alestlelive.com).

All hard copy letters should be typed and double-spaced. Letters should be no longer than 500 words. Include phone number, signature, class rank and major.

We reserve the right to edit letters for grammar and content. Care will be taken to ensure that the letter's message is not lost or altered.

Letters to the editor will not be printed anonymously except under extreme circumstances.

We reserve the right to reject letters.

### About the Alestle:

One copy of the Alestle is free. Additional copies cost \$1 each.

The Alestle is a member of the Illinois College Press Association, the Associated Collegiate Press, Student Press Law Center, College Newspaper, Business & Advertising Managers.

The name Alestle is an acronym derived from the names of the three campus locations of Southern Illinois University: Alton, East St. Louis and Edwardsville.

The Alestle is published on Thursdays in print and on Tuesdays online during the fall and spring semesters. A print edition is available Wednesdays during summer semesters.

For more information, call 618-650-3528.

For advertising, email [advertising@alestlelive.com](mailto:advertising@alestlelive.com).

### Have a comment?

Let us know!

Send us an e-mail: [opinion@alestlelive.com](mailto:opinion@alestlelive.com)

The Alestle

Campus Box 1167  
Edwardsville, Ill. 62026-1167

SHENEMAN THE STAR-LEDGER



THE GOVERNOR CITES HIS FOREIGN POLICY CREDENTIALS AFTER CRITICIZING THE PRESIDENT'S HANDLING OF ISIS.

Get your name in the paper *without* the court date.

Write a letter to the editor.  
Send letters to [opinion@alestlelive.com](mailto:opinion@alestlelive.com).

## Students use app anonymity to bully

Recently, new social media apps called FADE and Yik Yak have spread like wildfire through campuses across the nation, including SIUE.

If you're not familiar with the two, Yik Yak—an app similar to Twitter—was developed to allow users to anonymously post updates to anyone within a given radius of their location. The app isn't made for bullying, however some people abuse its anonymity to single out and personally attack students.

FADE is similar, but instead of solely text

students cross. I'll never understand why someone would go out of his or her way to intentionally belittle another person.

As a university, we talk about unity, togetherness and accepting diversity — holding seminars, hosting speakers and other various events — however, these apps have contributed to a tear in the social threads of the student body community.

It's reprehensible that once students are given the option of being anonymous, they somehow gain a false sense of invincibility and take clear advantage of it through hatred and ridicule. They don't consider there to be any repercussions of their actions. If anything, they'll gain a few points and make a few people laugh, but they only consider themselves in this equation of who gets burned.

It's actually quite selfish because they don't take into account how the person being posted about may react to seeing their name being mentioned or a picture of them that was secretly taken for the sole purpose of making a joke.

I'm not saying these apps should be erased entirely — I'm actually pretty positive that it's not possible — but we all need to keep in mind that although we are looking into a lifeless screen, there are real people with real emotions on the other side.

Mady O'Reilly can be reached at [moreilly@alestlelive.com](mailto:moreilly@alestlelive.com).



Mady O'Reilly  
Alestle Managing Editor

posts, people can also upload pictures. Users are only allowed to post anonymously once every 24 hours, but when most of them do, it's unacceptably rude and hurtful. Anyone who downloads the app must make a profile. Some people use their actual names, but others choose to make a completely anonymous name to post, allowing them to always post without people knowing who they are.

I actively use both apps, and I understand that not everyone uses them for the sole purpose of bullying. However, there is a certain moral line that is drawn that I've noticed far too many

## Be proactive instead of reactive with mental health

It's that time of the semester again — midterms have either just happened or are about to finish up. With the various tests and deadlines popping up comes the late night cramming, hasty completion of term papers and the nasty stress that accompanies them.

An unfortunate symptom of these times and their corresponding academic activities are the associated stresses and stress-induced breakdowns college students are so prone to. While the stress and negativity is still fresh in our minds from midterms, it's not a bad idea to discuss managing stress and keeping our mental health from dipping into the red.



Nathan Sierra  
Alestle Copy Editor

Being proactive about mental health and being aware of one's own difficulties when it comes to managing various stressors are both important tools for college students, but also an invaluable for adults. It's becoming easier to allow our minds to get distracted by social media, and having Netflix and Hulu just a few key strokes away results in a constant barrage of low-level stress and anxiety always occupying recesses in our minds.

These modern day persistent stressors, when combined with acute stress, such as having a paper due or an important midterm

can bring about horrible consequences, with students losing sleep or even worse, mental breakdowns that can lead to dropping classes, dropping out of college or even committing suicide.

Such drastic measures can be mitigated with a bit of foresight. The easy solutions are planning out and completing papers and projects in small steps, of course, but there are some events in life that cannot be planned for. These events occur suddenly and without warning that amp up stress levels much higher than anticipated, such as a car breaking down or a family member getting sick. These events can send surges of stress and anxiety into even the most meticulously planned student.

The students who successfully get through these problems are the ones who properly and safely relieve stress and anxiety. This can be as simple as venting to friends or speaking to a professional therapist.

Managing these stressors before they get too overwhelming and acknowledging one's own faults and shortcomings regarding one's own mental health are instrumental tools in learning how to enjoy life to its fullest. Before finals arrive and saddle us with even more stress, make sure you and your friends have successful ways of dealing with stress. Putting forth the effort to have a healthy mind is always worth it, and a little thought will go a long way in preventing a horrible breakdown.

Nathan Sierra can be reached at [nsierra@alestlelive.com](mailto:nsierra@alestlelive.com).

Do you think anonymous apps, like Yik Yak and FADE, are at fault when it comes to bullying or should users be more responsible with their comments?

Answer our poll at [www.alestlelive.com](http://www.alestlelive.com).



## 'Pure entertainment'

'The Servant of Two Masters' expects to bring laughs, excitement to Dunham Hall Theater

**CAITLIN GROVE**  
Alestle Lifestyles Editor

A twist on a classic Italian comedy will storm the stage of Dunham Hall Theater as the Theater and Dance Department opens its 2014-2015 season with a production of one of the earliest scripted comedies, "The Servant of Two Masters."

Director Chuck Harper said this play comes from a style of performances called *comedia* — a style which he has a great deal of experience working with.

"It's based on broad, stock characters and improvised scenarios," Harper said. "It's a big goofy comedy that was meant to be performed outside on traveling stages; it's silly theater for silly people. We are always looking out for our departmental majors; we want to do a wide variety of performances so part of their education is doing different styles and this is one we hadn't done for awhile."

Harper said this famous comedy is most known for the table scene.

"The Servant of Two Masters' is about this goofy servant who decided he can make more money and get more food if he becomes a servant to two different people. But he can't let the other two know about each other, or he'll wind up getting fired," Harper said. "The big scheme of this play is when they both end up at the same inn ordering dinner at the same time. It's a very famous scene. It's a lot of fun [and] it's a lot of choreography."

Senior theater performance major Josh Funneman, of Teutopolis, is playing the role of

the servant and describes it as his dream role.

"There is a line in the show that says, 'He's either incredibly stupid or really, really smart' and that best describes my character," Funneman said. "The entire action of the play is driven because he's hungry, and he's trying to get food, and this leads to a whole lot of nonsense. This has been my dream; I've been performing in plays at SIUE since I was a freshman and this is the most 'Josh Funneman' role that has ever existed."

Harper said the play runs 2 hours and 15 minutes, which is long for a com-

edy. However, it is a fast-paced production.

"If it slows down at all, the audience gets ahead of it and it's not as funny," Harper said. "For the actors, they have had to get the lines to the point where they can do them fast. That's been a real challenge; getting to the point where they feel comfortable enough with their lines so they can improvise, play and feel free to go a little bit crazy."

Harper said the casting process for

sign. It was really fun to shop for because it was like, 'Where can I find all of these bright diamond patterned fabrics?'"

Hanson said productions are not all fun and games. There is a lot of work that goes into it as well.

"In addition to doing the research and buying the fabrics, a costumer is also responsible for every pair of shoes, socks, wig and makeup design; that's all part of the overall look of the character," Hanson said.

**"I've been performing in plays at SIUE since I was a freshman and this is the most 'Josh Funneman' role that has ever existed."**

Josh Funneman  
Senior theater performance major

this play was easy compared to previous productions.

"A lot of times when you cast a play, you need people who are age appropriate, or certain physical types. With this one, I didn't care what anybody looked like, I just wanted to know who was the funniest," Harper said. "I think it's a good opportunity for students to play certain types of characters they wouldn't normally get to play. In this one, we'll just put on a goofy costume and give you some makeup and a wig and you can play anybody — as long as you're funny."

Head of design and technical theater Laura Hanson said the costuming team is building the costumes from scratch for this contemporary take on a historical play.

"I looked at 18th century fashion as part of my research. I also looked at more contemporary clothes that use 18th century detail. I let my imagination run wild," Hanson said. "It's interesting to me as the designer that I could really put some of myself and my imagination into it; mix contemporary fabrics and shoes with a little tweak here and there that are 18th century."

Hanson said when she thinks of the *comedia* style of productions, the overriding image that came to mind was a diamond pattern.

"That will be my unifying feature here; we want it to be bright and bold," Hanson said. "Everyone is going to have diamond patterns in their costume; they will be different sizes and colors, but that is the unifying feature for the de-

Harper said the set for this play is not huge, as the production was originally written with no set.

"The set can be as big or small as you want," Harper said. "It's written into the script that the characters tell where they are; they will say something like, 'Well here we are at the inn.' We've created a set; it's not a huge one but hopefully it's created in the same spirit as the costumes. We made it as an Italian street scene that has this updated feel to it."

Hanson said the production team wanted everyone involved in the production, including the audience, to enjoy themselves.

"The way we are presenting it is to have fun," Hanson said. "We aren't trying to get across any serious message here, it's pure entertainment. It's fun, it's silly and it's a laugh a minute."

Funneman said everything about this production gives audiences a reason to enjoy it.

"Do people still like laughing? Because if people still like laughing at stupid humor, there is something in this show for everyone," Funneman said. "People are going to walk out with a big smile. This is the show, they need to see it and they will be very disappointed if they don't. And bring your sunglasses; the costumes are outrageous and bright."

Harper said there is only one reason to see this play — to have a good laugh.

"I do all kinds of plays," Harper said. "Sometimes they are deep and philosophical and ask really big questions. In this play there is no deeper message or call to action, you don't have to think about anything at all. It exists for one reason only, and that is to make people laugh."

This production is being held at 7:30 p.m. Oct. 15-18 and 2 p.m. Oct. 19 at Dunham Hall Theater.

Caitlin Grove can be reached at [cgrove@alestlelive.com](mailto:cgrove@alestlelive.com) or 650-3525.

Photo courtesy of Valerie Goldston  
Photo illustration by Caitlin Grove





# 'Annabelle's' lifeless plot weakens true story of infamous doll

**HAILEY HUFFINES**  
Alestle Editor In Chief

Set in the early 1970s during the Manson Family murder trial, "Annabelle" starts off strong with a back-story intended to chill the bravest horror film lover.

The film begins with a short scene setting up the story fans of horror know so well — paranormal investigators Ed and Lorraine Warren's involvement with the demonically possessed doll. However, this particular story is not the focus of the film, rather, this film is a prequel to "The Conjuring," a 2013 film about the Warrens. Annabelle, the doll, makes her debut in this film in the Warren's Occult Museum.

The audience is then introduced to an all-American blonde-haired, blue-eyed married couple, Mia and John, played by Annabelle Wallis and Ward Horton. The couple is expecting their first child, but this is overshadowed by the older couple next door and their own family problems. A handful of scenes set up the future escalation of events,

one including their TV showing Charles Manson and his cult during the infamous murder trials.

The beginning of the film starts out remarkably strong with scenes that will make you scream out loud, jump out of your skin and cringe. But once most of the action dies down in the first 25 to 30 minutes of the movie, then the story begins to drag.

I found myself bored with the film, even at the parts intended to scare me. I tried to chalk it up to the fact that I watch horror films religiously and know what to expect, but I recognized that the dry, dull attempts to terrify audiences were diluted by the lame special effects and the campiness.

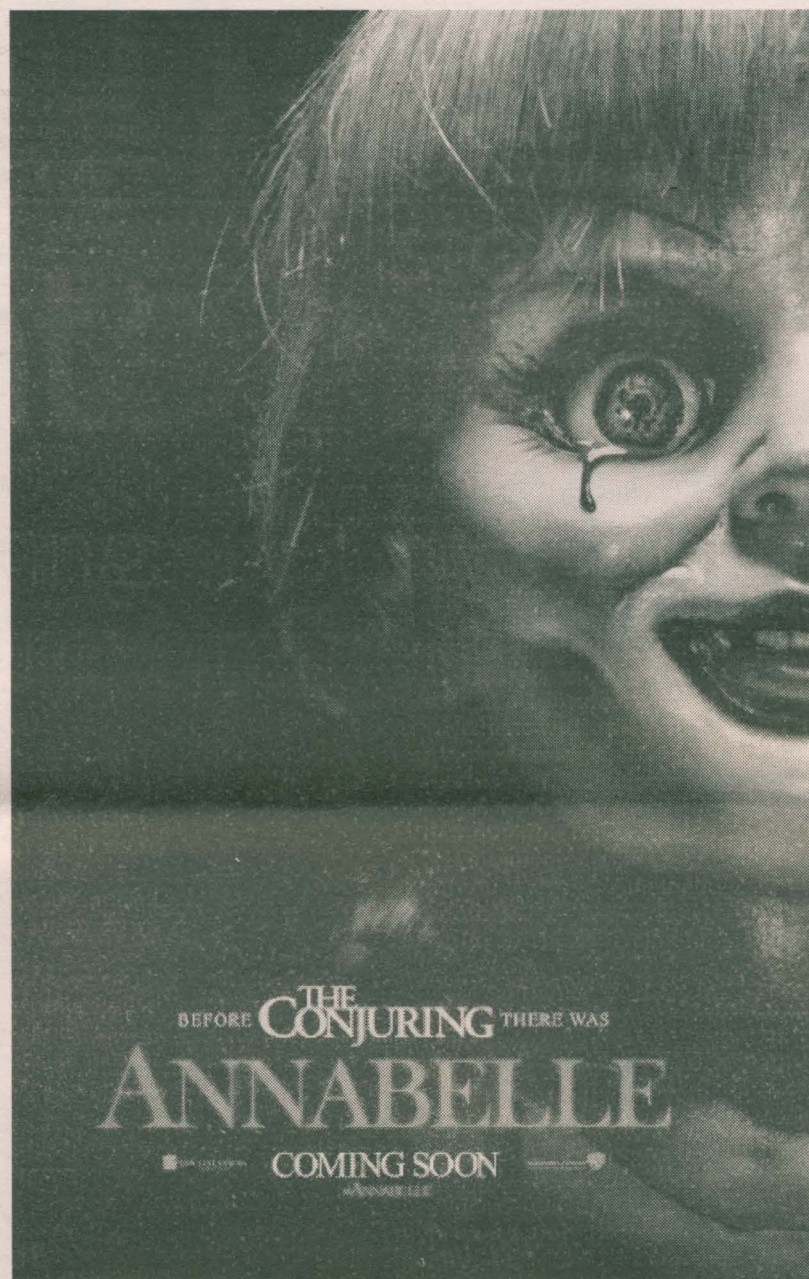
On top of the campy nature of the film, I was disappointed with the casting choices. Wallis was not believable in her role of Mia, a doting mother and victim of Annabelle's malicious actions. I wanted to see more depth and emotion from Wallis, but was greeted with blank faces and half-hearted screams. Horton was nothing more than a presence in the film,

and I did not think twice about his performance.

Alfre Woodard played Evelyn, a woman who assists Mia and John in their battle against the evil doll. Woodard's performance was terrific but her character's storyline faltered against the action of the film. Father Perez, played by Tony Amendola, held the cast together with his believable performance. I do think Tree O'Toole and Trampas Thompson, who played Annabelle Higgins and Higgins' boyfriend, deserve recognition for their short-lived characters that held the entire first half of the film together.

The themes that run throughout this film are poignant ones that fall flat thanks to the cast and the lazy plot. The power of a mother's love against evil and the power of faith in times of crisis are story elements we as the audience could all relate to in some way, but the film struggles to convince me that these are important.

Read more about 'Annabelle' at [alestlelive.com](http://alestlelive.com)



| Photo via IMDb

**Looking for Housing?**

CHECK OUT  
[alestlelive.com/classifieds](http://alestlelive.com/classifieds)

## ALL CAB MEETING

Are you interested in joining CAB? Do you want to help put on great events on campus? Come to the All CAB Meeting and see what CAB has to offer!

**OCT. 23**  
**5-6PM**  
**SSC 1203**

Campus Activities Board



## THE GARDENS AT SIUE



### Discover The Gardens at SIUE Day

Sunday, Oct. 12, 2014, 1-5 p.m.

The Gardens at SIUE  
6 Arboretum Lane  
Edwardsville, IL 62026

- View our newest designation, Monarch Butterfly Way-Finding Station
- Sustainability and plant presentations
- Face painting, pumpkin painting and construction of eco-friendly birdfeeders
- Musical entertainment

For more information  
(618) 650-3070  
[siue.edu/gardens/calendar.shtml](http://siue.edu/gardens/calendar.shtml)

Inclement weather cancels Discover The Gardens at SIUE Day



# SPORTS

Questions or comments regarding this section? Contact the Sports Editor at 650-3524 or sports@alestlelive.com

8 // The Alestle

www.alestlelive.com

Thursday, October 9, 2014



## Men's Soccer

	OVERALL	MVC
Missouri State	6-3-2	2-0
<b>SIUE</b>	<b>2-6-2</b>	<b>2-0</b>
Loyola	4-3-2	1-0
Evansville	3-6-1	1-1
Drake	2-7-2	0-1
Bradley	4-6	0-2
Cen. Arkansas	2-7	0-2

### Schedule for Oct. 11

Loyola at Drake

Evansville at Bradley

**SIUE at Cen. Arkansas**

### Schedule for Oct. 15

Loyola at Wisconsin

Cen. Arkansas at SMU

Kentucky at Evansville

### Schedule for Oct. 18

Missouri State at Loyola

**Drake at SIUE**

Cen. Arkansas at Bradley

### Schedule for Oct. 21

Lipscomb at Cen. Arkansas

Evansville at Louisville

UIC at Loyola

W. Illinois at Drake

### Schedule for Oct. 22

**SIUE at N. Illinois**

### Schedule for Oct. 25

Evansville at Drake

Bradley at Missouri State

Loyola at Cen. Arkansas

### Schedule for Oct. 28

**SIUE at Louisville**

Belmont at Bradley

Drake at Nebraska-Omaha

### Schedule for Oct. 29

Northwestern at Loyola

Indiana at Evansville



## Women's Soccer

	OVERALL	OVC
Morehead St.	8-2-4	3-0-1
<b>SIUE</b>	<b>6-4-1</b>	<b>3-0</b>
SE Missouri	5-4	2-1
UT Martin	8-5	2-2
Jax. State	7-6	2-2
Murray State	6-7	2-2
Belmont	4-3-4	1-0-2
E. Kentucky	3-9-1	1-2-1
Austin Peay	2-8	1-2
E. Illinois	3-9-1	1-3
Tenn. Tech	2-10	0-4

### Schedule for Oct. 10

Morehead St. at Murray State

E. Illinois at Tenn. Tech

**SIUE at Belmont**

Austin Peay at SE Missouri

E. Kentucky at UT Martin

### Schedule for Oct. 12

E. Illinois at Jax. State

Morehead St. at UT Martin

E. Kentucky at Murray State

SE Missouri at Belmont

**Austin Peay at SIUE**

### Schedule for Oct. 17

Belmont at Tenn. Tech

**SIUE at Morehead St.**

E. Kentucky at SE Missouri

Jax. State at Austin Peay

Murray State at E. Illinois

### Schedule for Oct. 19

**SIUE at E. Kentucky**

Morehead St. at SE Missouri

UT Martin at E. Illinois

Belmont at Jax. State

Tenn. Tech at Austin Peay

### Schedule for Oct. 24

E. Illinois at E. Kentucky

SE Missouri at Tenn. Tech

UT Martin at Belmont

**SIUE at Jax. State**



Senior forward Christian Volesky sprints past the Bradley defense on Saturday, Oct. 4. Volesky scored a goal and assisted, on another on the way to a 2-0 victory against the Bruins. Volesky was named the Missouri Valley Conference Offensive Player of the Week for his efforts.

[Photo by Nicola Lynn Batista/Alestle]

## Men's soccer impresses at Homecoming game

**BEN LEVIN**  
Alestle Sports Editor

More than 4,000 fans watched the men's soccer team score two goals in one half for the first time this season as the Cougars beat Bradley University 2-0 at homecoming. Co-Head Coach David Korn said it has been a struggle for the team to put goals on the board this season, but he always saw the potential.

"We continued to talk about how we were going to create opportunities," Korn said. "We knew we had the players for it. Some of it was just creating those chances on a more consistent basis. I think we've gotten more service. We've gotten more entries into the attacking third."

The victory puts the previously struggling Cougars (2-6-2 overall, 2-0 Missouri Valley Conference) on a two-game win streak, and puts them in a tie for first place in MVC with Missouri State University. Korn said the players have put their preconference schedule woes behind them.

"We talked about the process it's going to take throughout the season," Korn said. "We've split our goals up into four parts. We understood that we weren't happy at all with the results we got. We take responsibility and ownership for the fact that we fell short in those games, but we did feel like there were a lot of things that

we did well early. [We felt] that if we continued to do [them] and do [them] more consistently and we trained with a greater intensity, then we could start to turn into what we've had the last two games, which is better results."

The Cougars dominated Bradley (3-6, 0-2) on set pieces, using a variation of plays to keep

we didn't get many goals early," Korn said. "We know we can score and obviously when we do it on a set piece or a quick buildup, that's encouraging."

Volesky helped the Cougars improve their lead in the 35th minute. He sent a low cross into the opposition's box that found the foot of redshirt junior forward Travis Hoguet, who

defender Matt Polster] and Christianson. Now that we're starting to sprinkle in some other scoring and give him support, I think he's done a great job, and the group will continue to gain momentum."

Korn said Hoguet, who sat out last season, has been on the cusp of scoring all season, and he was glad the forward got his first of the year.

"He's been close. He was about a foot wide against Evansville," Korn said. "He's had a few other moments this year. He's a potent goal scorer; with both feet he can strike a good ball. We knew it was just a matter of him continuing to get opportunities in front of the net."

The game marked the second consecutive game the SIUE defense and senior goalkeeper Kent Kobornus have kept the opposition off the board. Korn said the goalkeeper's role on the team has helped him develop during the season.

"He's accepted the responsibility of being a little bit more of a leader this year," Korn said. "I think that has helped him to play with that confidence on the field."

The men's soccer team's next game is at 7 p.m. Saturday, Oct. 11, when the team travels to Conway, Ark. to take on the University of Central Arkansas.

Ben Levin can be reached at blevin@alestlelive.com or 650-3524.

**"We know we can score...when we do it on a set piece or a quick buildup, that's encouraging."**

**David Korn**  
SIUE Men's Soccer Co-Head Coach

the opposition on its toes. SIUE's skill on set pieces was shown in its first goal of the game.

After a slow start to the first half, SIUE got on the board in the 18th minute. Senior forward Christian Volesky scored his team-high sixth goal of the season off a corner kick by sophomore defender Andrew Kendall-Moullin. Volesky headed the ball into the back of the net, leaping in front of the Bradley defense.

Korn said he was impressed by how the Cougars were able to take control on the corner kick.

"[The goals came] on some restarts and sorts of plays where

blasted the ball past the Bradley goalkeeper for his first goal of the season.

With a goal and an assist in the game, Volesky has a team-high 14 points off six goals and two assists. Korn said with more players scoring now, Volesky will be able to show off more of his abilities.

"He's adapted to a new role. I think him and [redshirt junior forward Garet Christianson] are forming a good partnership up top," Korn said. "He's done a good job taking his chances. We've got four or five guys who can put the ball in the net. We saw that today from [Hoguet] and we got a goal in the last game from both [senior



# Women's soccer moves into first place in conference

**BEN LEVIN**  
Alestle Sports Editor

With two victories during the weekend, the women's soccer team became the first place team in the Ohio Valley Conference, with a 3-0 in conference play.

The team's 3-0 start to the conference season is the best since it joined the Ohio Valley Conference.

Head Coach Derek Burton said the players' mental toughness has helped them accomplish their undefeated start to the OVC schedule.

"The players are starting to believe that we can really do it," Burton said. "We've realized as a group what it takes to get a good result, whereas a little bit earlier in the year, we were a bit up and down. We're fighting now a little bit."

The team won in overtime on Friday, Oct. 3, defeating Murray State University 2-1 in overtime, and later UT Martin by the same score on Sunday, Oct. 5, in a rematch of last year's conference final match.

Against Murray State, the Cougars were victorious against the Racers, with senior defender Samantha Jones scoring in the 105th minute from 20 yards out after a corner kick by senior forward Michelle Auer.

In an interview with siuecougars.com Burton said the goal was big not just for Jones, but for the team as a whole.

"It means everything to [Jones] and everything to her teammates," Burton said. "Obviously anytime you get an overtime winner, the bench is going to go crazy, but out on the field, you could feel a lot of love

for [Jones] because everyone knows what she's battled through in terms of injuries. She's such a great leader on our team and she is so well-respected."

The Cougars' first goal of the game was scored in the seventh minute by freshman forward Emily Grahl, her second of the season. With two goals and three assists, Grahl has the second-most points on the team, behind Auer. Junior forward Katye Skrivan and sophomore defender Cassidy Rawdon assisted on the goal.

The Cougars dominated the run of play throughout the game, outshooting Murray State 19-7. Junior goalkeeper Jennifer Pelley had three saves for her fifth win of the year.

Burton said he was disappointed the team let in a goal, but was excited to see his team fight back.

"From a coach's standpoint, I would have loved to have kept the 1-0 shutout, but the girls hung with it," Burton said. "It's a testament to the mental approach that our team is starting to take."

On Sunday, the Cougars were in another tight battle, but defeated UT Martin 2-1 with a little bit of luck.

The Cougars were helped by an own goal by UT Martin to start the second half that gave SIUE the lead it would keep for the rest of the game.

The Cougars took the lead in the 25th minute, with Auer adding to her team-high goal total on the play. After controlling a pass from Grahl, Auer took a deep shot inside the 18-yard box that curled into the

upper 90 of the opposing team's goal, giving the Cougars the lead and Auer her fifth goal of the season.

The team did not hold the lead for long, as two minutes later, UT Martin got a goal of its own. Senior forward Ashlie Watson sent a high cross into the Cougars' box that found the head of junior forward Rianna Jarrett, who headed in the effort to tie the game at 1-1.

SIUE outshot UT Martin 16-10, with Pelley making two saves in the victory.

After playing three games at home, the majority of SIUE's games are on the road. Burton said these three victories are crucial to the team's success.

"Any win in conference is huge," Burton said. "It doesn't matter where it's at, but it's certainly nice to play three at home and win three at home."

The team plays next at 5 p.m. Friday, Oct. 10, when it travels to Nashville, Tenn. to face Belmont University. Burton said the team will try to maintain its success by doing the same things it has done all year.

"We're really staying with what we're trying to do," Burton said. "We're going to work on cleaning up things we see in video and the things we've seen on the sideline over the weekend. We're also going to work on just getting better and recovering and getting ready for Belmont to find out what they're all about."

The Cougars return home at 1 p.m. Sunday, Oct. 12, to play Austin Peay State University.

Ben Levin can be reached at [blevin@alestlelive.com](mailto:blevin@alestlelive.com) or 650-3524.



Senior defender Samantha Jones fights to intercept a pass against Eastern Illinois University on Sunday, Sept. 28. On Friday, Oct. 3, Jones scored a game-winning goal against Murray State University to help the team to an undefeated record in the Ohio Valley Conference.

| Photo by Nicola Lynn Batista/Alestle

## Volleyball starts 0-4 in conference

**CAITLIN GROVE**  
Alestle Lifestyles Editor

The volleyball team fell to Tennessee State University in four sets, leaving the team 8-11 overall and 0-4 in the Ohio Valley Conference.

The Cougars finished the match 25-27, 18-25, 25-21, 16-25.

Head Coach Leah Johnson said the team's playing performance was up and down against Tennessee State.

"In set one we had a big lead, fell behind, then climbed back and

lost in extra points. In set two, I thought we were a little flat. In set three, we came out firing; we were really good and then didn't have enough steam to carry us into set four," Johnson said. "As has been all year, we are very up and down. I say that's a lot of youth, but that can't be an out for the rest of the season; we have to overcome that. That's the challenge we are faced with."

Senior libero Chelsea Colclasure led the team with 16 digs, followed by freshman outside hitter Emily Harrison with 13. Junior middle blocker Kristen Torre

finished the match with 14 kills, trailing freshman outside hitter Ashley Witt with 17. Witt also ended the night with 17.5 of the team's 57 total points.

Johnson said Witt's efficiency is improving with every match.

"It allows us to set her even more because she is as terminal but not as high risk," Johnson said. "She is really coming along nicely and we are continuing to develop other athletes around her to compliment her play. I would expect in the next

VOLLEYBALL | pg. 11

**ASAP** With the Support of **Shop'n Save**

Presents

## Dawn of The Living Bread

Don't be afraid to give us your gently used clothing, too!

**Fear Not- Every donation counts!**

Community Food Drive

**When:**  
Sunday, October 26th  
8am - 2pm

**Where:**  
Shop'n Save of Edwardsville  
2122 Troy Rd,  
Edwardsville, IL 62025

Contact us at [sue.brambles@asapall.com](mailto:sue.brambles@asapall.com)

# PARTY LATER?

★ ★ ★

## WE CATER!

**ORDER ONLINE**  
@JIMMYJOHNS.COM

## FREAKY FAST DELIVERY!

© 2013 JIMMY JOHN'S FRANCHISE, LLC. ALL RIGHTS RESERVED.





Men's cross country runners line up, awaiting the start of their 8k run around SIUE's cross country track on Saturday, Oct 4.

Photo by Adam Mason/Alestle

## Cross country prepares for last regular season meet at home competition

BEN LEVIN

Alestle Sports Editor

The men's cross country team won its third meet of the season on Saturday, Oct. 4, running at home in the John Flamer Invitational. The women's side, competing in the same event, came away with a fourth place finish.

Coming off a track season where two SIUE athletes competed in the NCAA Championship meet, there was pressure for the cross country team to show signs of improvement. Head Coach Eileen McAllister said the athletes are still working to reach their greatest potential.

"I think that not only is there a confidence boost, but also the level of expectations has risen," McAllister said. "After putting points on the board at track meets, they know they'll have to compete

with these guys in cross country, and now they can beat them in cross country and on the track in the spring."

On the men's side, improvement has been shown in the results. The team has won three of its four meets this season, but McAllister said there is still room to improve to reach a higher level of competition.

"I'm really excited about how they have come together, and how they have been training," McAllister said. "We still have a little bit more work to do in the competing realm. It's been great that we've won some meets, but they're still going to have to do a lot more to be able to achieve what they want to achieve in the postseason at the [Ohio Valley Conference meet] and NCAA Regionals."

On Saturday, junior Clint Kliem led SIUE for the second

time this season, finishing with a time of 25 minutes, 24 seconds. Following Kliem were sophomore Keith Meyer, junior Nick Moore and junior Scott Woodard.

Moore and Woodard have both finished first for the Cougars once this season. McAllister said it is encouraging to see variation at the top of the men's team.

"One of the best things about this group is that there isn't a clear number one," McAllister said. "They're constantly competing against each other in races and in practice. [Kliem] has definitely edged out to be the number one in some of the races. He's definitely wanting that spot. [Moore] and [Meyer] and [Woodard] all those guys are there, constantly changing leads. It's exciting to see because I can never really tell who is going to win or who is going to be the first guy at practice because they are pushing each other."

McAllister said having a different top finisher at each race is partially a result of the strategies the team uses during the competition.

"At practice, now that they have packs together, they can do the workouts together," McAllister said. "Once you do that in practice, it's easier to do in a race. It's easier to have that bond, and you can feel each other and know each other's presence is right there. From the team aspect, you have more on the line. You're not just competing for yourself."

On the women's side, there was less variation in the top finisher. Junior Conradette King has led the team three times this season, and did so at the John Flamer Invitational, finishing the race in 23:21.

Junior Hayley Briggs was the next Cougar runner to cross the line, and was followed by

freshman Haley Miller and sophomore Erin Kennedy.

McAllister said the women's team has not shown its improvement well in competitions, but has improved steadily from last season.

"I think on the women's side, our practices have gone better than our results have indicated," McAllister said. "We still need to be more competitive in the races. We're holding back a little too much or just unsure about things. A part of that is a youth thing. We have two freshmen in our top five that we're really depending on as they try to figure things out."

Although King is the top dog currently, McAllister said the other athletes could take over that spot in the coming weeks.

Read more about cross country at [alestlelive.com](http://alestlelive.com)

### arts & issues

Season 2014-2015

#### An evening with LOS LOBOS

performing *La Pistola y El Corazón*

Thursday, Oct. 16, 2014, 7:30 p.m.

Meridian Ballroom, Morris University Center

Celebrating their 40th Anniversary as a group and the 25th Anniversary of their Grammy-winning release, *La Pistola y El Corazón* (1989-Best Mexican-American Performance), Los Lobos will, for the first time, perform the album in its entirety, followed by a set of fan favorites performed acoustically. More than four decades have passed since Los Lobos released their first album, "Just Another Band From East L.A." Since then, they've repeatedly disproven that title—Los Lobos isn't "just another" anything—but rather a band that has consistently evolved artistically while never losing sight of its humble roots.

Tickets can be purchased at the Morris University Center Welcome Desk or by visiting [artsandissues.com](http://artsandissues.com).

IntelliTutor

Hampshire

SUN. PublicRadio

SOUTHERN ILLINOIS UNIVERSITY  
EDWARDSVILLE  
COLLEGE OF ARTS & SCIENCES

50 free tickets for SIUE students courtesy of Student Affairs

LIKE US  
THE ALESTLE news  
sports lifestyles opinion  
SIUE COUGARS  
entertainment Campus Life  
EDWARDSVILLE  
View from the  
LIKETH ALESTLE  
alestlelive

[www.facebook.com/Alestlelive](http://www.facebook.com/Alestlelive)

IT'S TIME TO CLAIM  
**VICTORY**  
— OVER UNRULY HAIR —

**SportClips**  
HAIRCUTS

IT'S GOOD TO BE A GUY

SPORTS ON TV  
GUY-SMART  
STYLISTS  
Open EVERY DAY  
NO APPOINTMENTS

SPORTCLIPS.COM FACEBOOK.COM/SPORTCLIPSHAIRCUTS TWITTER.COM/SPORTCLIPS

**SportClips**  
HAIRCUTS

Edwardsville  
Glen Carbon  
Troy Rd. and Junction Drive  
Next to Super Walmart  
618.659.2151

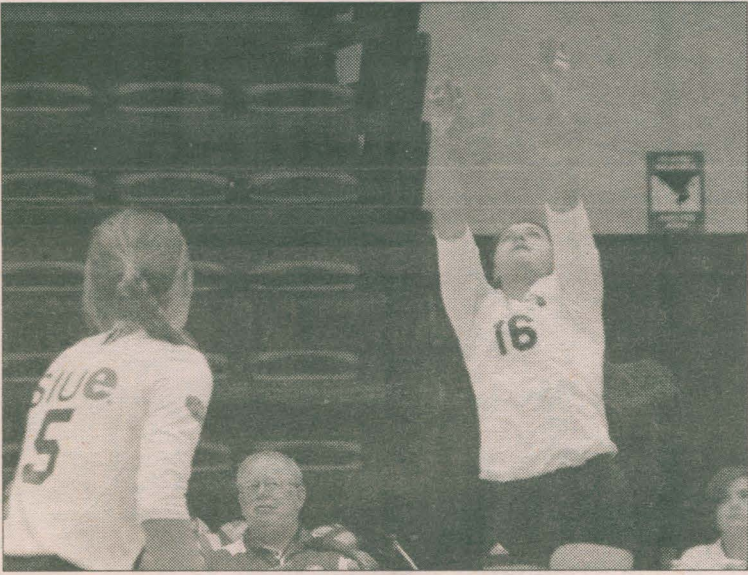
Map showing location: Troy Rd., Junction Drive, Whistle Stop Dr., Lowe's, Office Max, Super Walmart.

**\$10 Haircut**

Regular Varsity Haircut: \$17 • Regular Jr. Varsity (10 & Under) Haircut: \$13  
Present coupon before haircut. Not valid with any other offer. Void if bartered, copied, traded, or sold. Valid only at Edwardsville/Glen Carbon Location.

EXPIRES • V: 3240 • JV: 3245





Freshman outside hitter Ashley Witt sets the ball against Tennessee State University on Saturday, Oct. 4. | Photo by Nicola Lynn Batista/Alestle

**VOLLEYBALL** | from pg.9

few weeks to see other names show up in the stat line. I think it's all there, it's just putting it together on the same night over and over again."

Johnson said conference play is much harder than preseason play because the teams know one another very well.

"You play these teams every year; you know the faces on the other side of the net. We have a very young team, the youngest we have ever been, the pressure of conference is a real feeling; no matter how much you manifest it in your head, it's very difficult to overcome," Johnson said. "We are still adapting to that pressure and still growing through that learning curve. It's very promising; we have an exceptional group of talent. There is no doubt in my mind

they will meet their goals; we've just fallen short the past few matches."

Johnson said the team is looking forward to being home again this coming weekend.

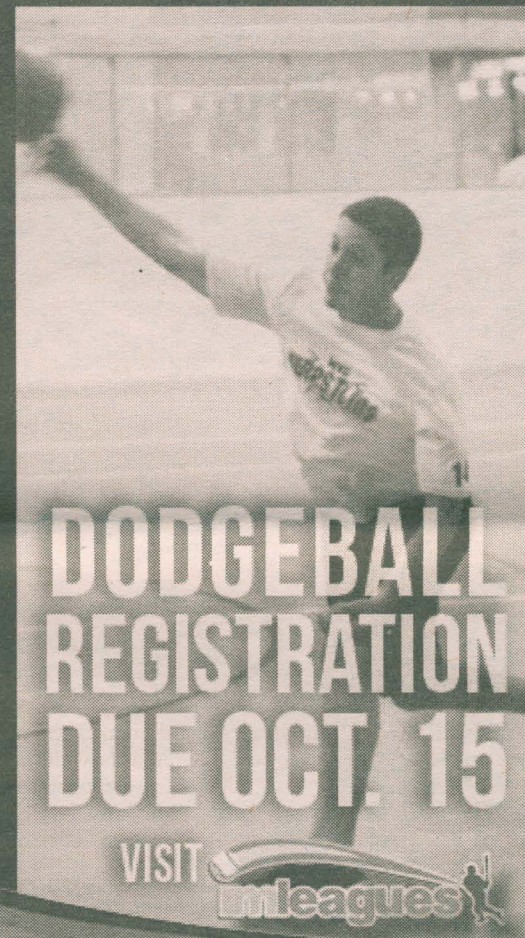
"We spent so much of this year on the road that it was almost unfamiliar to be home," Johnson said. "Now that we have another home game under our belt, I think this weekend when we have two of the toughest teams in the conference coming in, we can battle again. We get a second run at playing at home."

The Cougars' next game is 7 p.m. Friday, Oct. 10, at the Vadalabene Center against Austin Peay State University.

Caitlin Grove can be reached at [cgrove@alestlelive.com](mailto:cgrove@alestlelive.com) or 650-3527.

# CAMPUS RECREATION

618.650.2348



**DODGEBALL  
REGISTRATION  
DUE OCT. 15**

VISIT **inleagues**



SIUE.EDU/CREC

**SKI & SNOWBOARD TRIP  
COPPER MOUNTAIN, CO.**

• • • **DEC. 14-19**

**REGISTER BEFORE NOV. 1  
AT THE SFC RECEPTION DESK**



**SIUE**  
Campus Recreation

DESIGNED FOR LIFE

**Senior Airman  
DAVID ANDERSON**

**TIME SPENT IN THE  
AIR GUARD EACH MONTH: 6%**

**FREE TIME SPENT  
WITH GIRLFRIEND: 85%**

**94% GRADE ON LAST  
BIOLOGY EXAM**

**100% PRIDE IN SERVING  
HIS COUNTRY**

Experience the pride of serving your country while getting money for college – serving part-time in the Air National Guard. Contact us to learn more.

**GoANG.com/IL ▶ 800-TO-GO-ANG**

ILLINOIS  
**AIR NATIONAL  
GUARD**



## ALESTLE CLASSIFIEDS GIVE YOU MORE!

Place your classified ad at a time convenient for you using our easy and secure online interface at:  
[alestlelive.com/classifieds](http://alestlelive.com/classifieds)

### BASIC PRINT INSERTION RATES:

10-word minimum for all ads.  
20 cents a word 1-2 insertions, per insertion  
19 cents a word 3-4 insertions, per insertion  
18 cents a word 5-19 insertions, per insertion  
17 cents a word 20+ insertions, per insertion

### Print Extras:

All bold, additional \$5

### Web Extras Vary

Please schedule your ad carefully as we cannot offer refunds. Corrections must be noted on the first day the ad appears in the newspaper.

### Deadlines:

By noon Friday for Tuesday issue  
or noon Monday for Thursday issue  
Having trouble? Call 618-650-3528  
or e-mail [classifieds@alestlelive.com](mailto:classifieds@alestlelive.com)

Alestle Office Hours:  
MUC 2022

8 a.m. - 4:30 p.m. Monday-Friday

### HELP WANTED

Part-Time Outdoor worker, Landscape Company. Heavy Lifting required.  
Call 618-650-1712

Jimmy Johns is hiring sandwich makers, delivery drivers and order takers for new store opening soon in Glen Carbon. Apply at the Edwardsville location.

### MISCELLANEOUS

FREE Faith-Based Books!  
[www.sowersseed.org](http://www.sowersseed.org)

### FOR RENT

2 Bedroom Townhomes

2BR, 1.5BA \$833/month; W/D hook-up, microwave, dishwasher, oven/range, refrigerator. Select units free basic cable. Pet-friendly.

Cherry Hills Properties 618.692.9310

To read more  
scan here  
or visit  
[alestlelive.com](http://alestlelive.com)



# We're looking for you!

## Graduate Assistant Graphics Manager

good understanding of publication design  
knowledge of desktop publishing  
understanding/experience of Adobe  
Creative Suite photoshop. illustrator. able  
to use social networking to promote  
online content. basic news judgment  
journalism skills preferred video  
editing experience and/or knowledge preferred.

Apply at: Morris Univ. Center, Rm. 2022  
OR call 618-650-3597

the **ALESTLE**

Follow @thealestle  
on Instagram!



We have two words for you...

# PRIVATE BATHROOM

We offer superior amenities and apartment features that you simply won't find with the other guys. Private Bedrooms and Bathrooms give our residents the privacy of having their own space while residing with their peers. The waiting game, and crowded bathroom is out, personal private bathrooms are in. Get yours today!

enclave  
MANAGEMENT

[www.enclaveinfo.com](http://www.enclaveinfo.com) • [www.enclavewestinfo.com](http://www.enclavewestinfo.com)