

THE Alestle

ALTON - EAST SAINT LOUIS - EDWARDSVILLE

Thursday, September 13, 2012

www.alestlelive.com

INDEX

News	1-3
Opinion	4-5
Lifestyles	6-7
Sports	8-10
Classifieds	12

Volume 65, No. 5

Sororities must obey rules during Rush Week

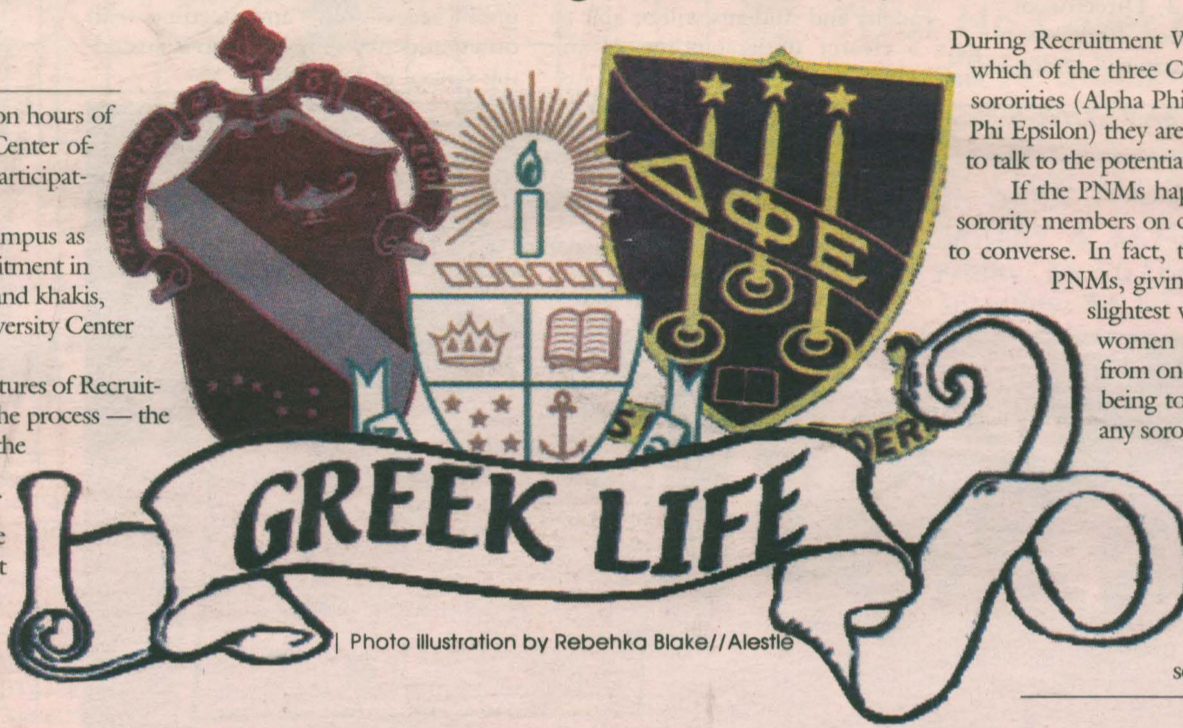
Collegiate Panhellenic Council sisters 'ignore' to impress incoming initiates

VICTORIA MIZEL
Alestle Reporter

During the morning and early afternoon hours of Sept. 3-7, tables in the Morris University Center offered information for women interested in participating in Sorority Recruitment Week.

Other indicators can be seen across campus as well: the students dressed up to attend recruitment in the evenings, the sudden wealth of pumps and khakis, the activities taking place in the Morris University Center every night this week.

While there are many distinguishing features of Recruitment Week for the women going through the process — the jittering nerves of waiting to receive a bid, the vast number of faces to get to know, the intimidation of walking into a room full of strangers and hoping it will go well — there are also many unique aspects of recruitment week for the women returning to their sororities. In fact, there are several rules that the women have to abide both during and even before recruitment actually starts.



During Recruitment Week, the women, no matter which of the three Collegiate Panhellenic Council sororities (Alpha Phi, Alpha Sigma Tau or Delta Phi Epsilon) they are involved in, are not allowed to talk to the potential new members, or PNMs.

If the PNMs happen to run into one of the sorority members on campus, they are not allowed to converse. In fact, the Greeks must ignore the PNMs, giving them nothing beyond the slightest wave or smile, to protect the women from being swayed unfairly from one sorority to another or from being told they will receive a bid for any sorority before it is official.

Junior accounting major Katie Brasel, of O'Fallon, Ill., went through recruitment week her freshman year and is now involved in the selection process.

"During Rush Week, sorority members may not talk

SORORITY | pg. 2

Free food with Kentucky Knife Fight boosts voter registration on campus



Jason Holler, Jason Koenig and Curt Brewer of Kentucky Knife Fight play in the Stratton Quadrangle on Tuesday for Rock the Vote, an event that included free food for registering to vote.

Photo by Kalin Haydon//Alestle

Lovejoy speakers educate students on political issues

DAVID PRUITT
Alestle Reporter

A grant from the Meridian Society has allowed Library and Information Services the opportunity to host a speaker series aimed at informing and registering students to vote.

vide the opportunity for students to vote. The 18 to 24-year-old age group is the smallest percentage to vote amongst the different age groups," Estep said. "Very few young people vote."

The next speaker is scheduled for Sept. 17 and is SIUE political science

"I just wish that, besides registering students, there would be more programs to educate them..."

Shanieka Wright
Freshman business major from Chicago

Social Science Librarian Erik Estep, the project's director, has put together a diverse group of speakers to appeal to as many different attendees as possible.

"We are providing some unique and interesting programming. We picked people who can talk about books and the practical side of politics," Estep said. "We are also providing the outlet for students to talk by having a forum on politics."

According to the Census Bureau, the 18-24 age group had the lowest turnout in the 2008 elections. Estep said that is a trend he would like to change.

"The real idea behind this is to pro-

professor Laurie Rice. She will give a presentation called "Civic Engagement and Universities" and said the series should benefit young voters.

"If groups are systematically underrepresented in terms of who uses their right to vote, then they may be systematically underrepresented when it comes to policy, and young voters in particular have been systematically underrepresented," Rice said. "One of the things that I hear over and over from students who don't vote is that they feel they don't know enough knowledge to cast a vote and they struggle with ways to

LOVEJOY | pg. 3

NEWS

Disability Support Services offers opportunity to travel

page 2

OPINION

Refund policy debate

page 5

LIFESTYLES

Pantyhose, C-cups and drag. Oh my!

page 6

SPORTS

Volleyball wins one of three matches in Ohio

page 8

ONLINE

Scan for upcoming events



Students get change of view through 'Access the World'

ALEXIS HARDY
Alestle Reporter

It takes more than 4,000 miles to get from Edwardsville to London, but SIUE Disability Support Services is making that trip possible for students to better understand hindrances.

In late spring 2012, Director of Disability Support Services Phil Pownall began developing a trip to London

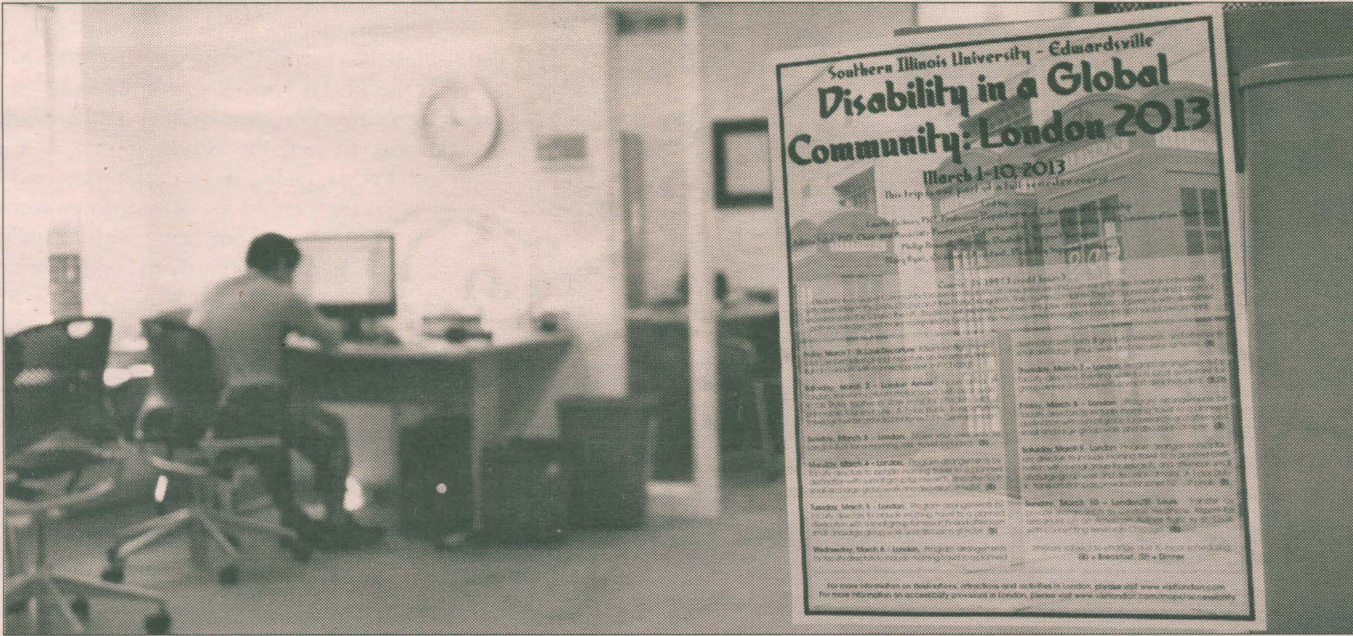
study of access and disability in another culture was not difficult for Pownall.

"This will be my first time teaching a study abroad course, and I'm excited to study access issues in London and attitudes towards disabilities there and to lead students to a better understanding of disabilities," Fahsl said.

Faculty and students will be able to gain a clearer understanding of the similarities and differences, social jus-

tive of disability, meet students with disabilities in London and hear their ideas and perspectives," Ryan said.

Students interested in the trip can enroll in the Access the World course, or IS 399, in Spring 2013. The course will revolve around pre-planning the research, planning routes to and from public access points and meetings with other students with disabilities attending school in London.



Disability Support Services' new organization New Horizons will be traveling to London as a part of a spring 2013 Interdisciplinary Studies course, Disability in a Global Community. | Photo by Rebekha Blake//Alestle

for any students or faculty interested in expanding their knowledge about disabilities.

Growing up as a child of a 20-year Air Force veteran, Pownall lived in many places and learned that understanding culture comes from understanding others' perspectives. To better comprehend disabilities, he feels that studying other cultures can further one's knowledge and perspective.

By connecting with Ronald Schaefer, director of the Center for International Programs, Special Education Department Chair Allison Fahsl and Laurel Puchner from Educational Leadership, Pownall had the ability to design this trip. Finding faculty and students who were interested in the

title paradigms and attitudinal barriers that exist in London, according to Pownall, by participating in this trip.

"By understanding another culture, you can understand how much we have in common, appreciate our differences and gain perspective to offer constructive ideas of change," Pownall said.

Mary Ryan has worked for Disability Support Services as a student worker since 2009 and is now returning as a graduate assistant to play an important role in the trip. She will be in charge of fundraising, advertising and coordination, and will also participate as one of the four group leaders on the voyage.

"I am most excited to help expand our students' knowledge and perspec-

"People with disabilities are disproportionately left out of the American dream. The unemployment rate of people with disabilities is 10 times that of the average American worker," Pownall said.

With this trip to London, Pownall hopes students and faculty will gain a new perspective on people with disabilities and will help them generate ideas for the future.

"Maybe, through this trip, [students and faculty] will be more likely to see beyond disability and look at their fellow community members as valued, able and productive members," Pownall said.

Alexis Hardy can be reached at ahardy@alestlelive.com or 650-3527.

SORORITY | pg. 1

to potential new members outside of the rooms at all and cannot talk to the Gamma Chis," Brasel said. "Sorority girls can't 'bid promise' girls and tell them that they will definitely get into their sorority because it is never a given."

Gamma Chis are the girls chosen from each sorority to be a part of selecting their new bids. They must completely disaffiliate themselves from their sororities during this time.

The women even have rules for social networking, depending on their involvement with the recruitment process.

Sophomore nursing major Olivia Morris, of Tuscola, is a returning Greek member and is involved in the recruitment festivities this year.

"We couldn't add Facebook friend requests since the end of August until Bid Day, which is this upcoming Saturday," Morris said.

The women must also be unsearchable. There can be no way for PNMs to find out what sorority with which the women are affiliated or to contact them about sororities or anything pertaining to them.

The women also cannot carry or wear anything displaying their Greek letters for the week before the actual recruitment week or during it. The goal is to keep PNMs from knowing to which sororities the women already involved belong.

"Sorority silence is from Thursday at midnight until Tuesday, when we had our first recruitment group," Morris said. "We couldn't wear letters or symbols and couldn't tell potential new members what sorority we were in."

The women cannot hang out with more than three fraternity men to one sorority woman during this time.

During recruitment, the women cannot approach the PNMs in groups larger than two in order to not overwhelm them. They also cannot touch them.

"In the rooms during Rush Week, sorority members can't touch the potentials — hug, shake hands, etc. — unless the potential initiates it," Brasel said.

In the end, the intention of the girls running recruitment week is to make sure the girls rushing have fun and a fair opportunity with each sorority.

"The biggest no-no of all is absolutely no 'dirty rushing,' and that means telling the potentials that they should join their certain sorority and talking bad about the others," Brasel said. "We want the potentials to have an open mind,"

The women will be working to make sure recruitment week is a fun event. By Saturday, recruitment will be finished and the PNMs will have a home with one sorority or another.

Victoria Mizel can be reached at vmizel@alestlelive.com or 650-3527.

Custom T-Shirts for Less



Over a million shirts printed.
Awesomely low prices.

shirts	1 color	2 color	3 color
12	\$6.64	\$8.39	\$8.64
24	\$4.57	\$5.44	\$6.32
48	\$3.80	\$4.37	\$4.93

Pricing is all-inclusive; free shipping and no setup fees!
Prices quoted include standard 5.4 oz white tee.

Get started! Place your order at:
www.ooshirts.com

LATE NIGHT BINGO

FRIDAY, SEPTEMBER 14, 2012
7:00 PM - 11:00 PM
MUC MERIDIAN BALLROOM

FREE FOOD!
HUNDREDS OF PRIZES!
IPAD GIVEAWAY!

Campus Activities Board

SIUE POLICE BLOTTER

9-6-12

Several officers responded to a domestic call to find a couple arguing over the custody of their daughter at 423 Cougar Village. Arrangements were made for the male subject to collect a few things and leave for the day.

An officer issued Christine N. Wright a citation for speeding 39 mph in a 25 mph zone on Northwest Entrance Road.

An officer observed an unconscious Joseph D. Bourland near the Stratton Quadrangle and arrested him for unlawful consumption of alcohol by a minor. Bourland was taken to the police department, processed and released with a notice to appear.

An officer issued Travis Truitt a citation for an unlawful number of passengers in his vehicle on South Circle Drive at Lot B.

9-7-12

Officers contacted a student who reported being assaulted by a male. Officers arrested Chase L. Fletcher for unlawful restraint, battery and unlawful consumption of alcohol by a minor. Fletcher was taken to the police department for processing and was then transported to Madison County Jail on a felony hold.

An officer arrested Kimberly T. Rogers for driving while suspended. Rogers was taken to the police department, where she was processed and released with a notice to appear as well as a citation for driving while suspended on South University Drive at P2 Road.

An officer took a walk-in report regarding a student being harassed by her ex-boyfriend via text message.

9-8-12

An officer issued Evan C. Morgeson a citation for speeding 44 mph in a 25 mph zone on University Drive at P2 Road.

An officer heard a disturbance in Lot 4E and called an ambulance for possible alcohol problems. One student was taken to Anderson Hospital. Porsha Irvin came into the police department per request and was arrested for unlawful consumption of alcohol by a minor. Irvin was processed and released with a notice to appear.

An officer issued Dayne Bogard citations for operation of an uninsured motor vehicle and speeding 44 mph in a 25 mph zone on South University Drive at P2 Road.

9-9-12

An officer arrested Carl Krencis for possession of cannabis. Krencis was taken

to the police department, processed and released with a notice to appear.

An officer issued Joshua Lager a citation for improper lane usage on East University Drive.

An officer took a report of a female running from 511 Cougar Village and being chased by a male. The officer caught up with the subjects outside 520 Cougar Village. The subjects had recently had a verbal altercation. Officers arrested Elizabeth Celis for unlawful consumption of alcohol by a minor, resisting arrest and aggravated battery. Celis was extremely combative when officers took her into custody. She was taken directly to Madison County Jail and placed on a felony hold.

An officer took a walk-in report of a cooker stolen from Korte Stadium.

9-10-12

An officer took a report of the smell of gas in the hallway of 428 Cougar Village. The officers detected the odor and evacuated the building. The Edwardsville Fire Department was dispatched and detected a small leak coming from an appliance in an apartment. The building was ventilated and the gas was turned off. University Housing is arranging repairs.

LOVEJOY | pg. 1

find information.”

Rice said it is hard to find unbiased information and advises people to get their information from as many sources as possible to make an informed decision.

Freshman business major Kayleigh Estep, of Belleville, said she is uncertain if she will vote based on her lack of knowledge about the candidates.

“I haven’t decided yet. I feel like I am not informed enough to vote yet,” Kayleigh Estep said. “I turned 18 in my senior year of high school and didn’t really pay attention to politics.”

Other students, like freshman business major Shanicka Wright, of Chicago, feel that the registration drives are OK, but more should be done to inform voters and not just register them.

“It is important to know what the issues are. How can you decide without knowing what the issues are? It is important to be involved with the political process from the beginning to the end so you can affect change around you,” Wright said. “I just wish that, besides registering students, there would be more programs to educate them.”

Junior business major Jessica Gloeckner, of Belleville, said she will be voting, and if a person chooses not to, he should be quiet.

“My grandpa always said, ‘If you don’t vote then you can’t complain,’” Gloeckner said.

Students that cannot make the speaker series but are interested in signing up can register at their County Clerk’s office, municipal or township offices, libraries or the Department of Motor Vehicles.

Once citizens register to vote, their eligibility never expires. However, if you move out of a voting district, you must re-register with your new voting district or vote absentee in your old district.

The presentations are from 7-8:30 p.m. and run from Sept. 10 to Oct. 4 in the third floor conference room of Lovejoy Library. Participants will be provided refreshments and assistance in registering to vote.

A full listing of voting regulations and registration offices can be found at madisonvotes.com.

David Pruitt can be reached at dpruitt@alestlelive.com or 650-3527. Follow @DavidPruitt4.

Hollywood ★ Tan
 Mystic \$15
 1 week with upgrade \$9.99
 Get \$20 lotion with 8 visits
 or 30 day unlimited \$19.99
 23 Junction Drive Ste. A • Glen Carbon, IL 62034
(618) 656-8266

we’re lookin’ for you

want to write for an **award-winning student newspaper?**

earn money and experience at the Alestle.

pick up an application at the Alestle office MUC 2022
 Questions? call 618.650.3530

REMINDER TO STUDENT ORGANIZATIONS!

**MANDATORY ORIENTATION
and
FUNDING SEMINARS (MOFS)**

Tuesday, Sept. 18, 6:30-8:30 p.m.
 Student Success Center, Room 1203

Thursday, Sept. 20, 3:30-5:30 p.m.
 Morris University Center, Mississippi-Illinois Room

Monday, Sept. 24, 10 a.m. - Noon
 Morris University Center, Mississippi-Illinois Room

Wednesday, Sept. 26, 1-3 p.m.
 Morris University Center, Mississippi-Illinois Room

Thursday, Sept. 27, 4:30-6:30 p.m.
 Student Fitness Center (Club Sports Only)

Thursday, Oct. 2, 4:30-6:30 p.m.
 Student Success Center, Room 1203

For more information,
 email Ryan Rosiak, Finance Board Chair
rosiak@siue.edu

Opinion

Express your opinion 24 hours a day, seven days a week!
Polls, message boards and more at www.alestlelive.com

Questions or comments regarding this section?
Contact Opinion Editor Roger Starkey at
650-3524 or opinion@alestlelive.com.

Thursday, September 13, 2012

www.alestlelive.com

The Alestle // 4

the Alestle

Alton - East St. Louis - Edwardsville

Michelle Beard
Editor in Chief

Lexi Cortes
Managing Editor

Ashley Seering
Lifestyles Editor

Roger Starkey
Opinion Editor

John Layton
Sports Editor

Alexis Hardy
Victoria Mizel
David Pruitt
Gabriel Simpson
Reporters

Rebekka Blake
Photo Editor

Kalin Haydon
Briana Collier
Photographers

Liz Spihlman
Chief Copy Editor

Mat Camp
Lindsey Oylar
Copy Editors

Kia-Dre Bird
Managing Secretary

Lydia Hawkins
Office Secretary

Debbie Roberts
Office Manager

Tammy Merrett-Murry
Alestle Program Director

Letters to the Editor Policy:

The editors, staff and publishers of the Alestle believe in the free exchange of ideas, concerns and opinions and will publish as many letters as possible.

Letters may be submitted at the Alestle office located in the Morris University Center, Room 2022 or via e-mail at opinion@alestlelive.com.

All hard copy letters should be typed and double-spaced. Letters should be no longer than 500 words. Include phone number, signature, class number and major.

We reserve the right to edit letters for grammar and content. Care will be taken to ensure that the letter's message is not lost or altered.

Letters to the editor will not be printed anonymously except under extreme circumstances.

We reserve the right to reject letters.

About the Alestle:

One copy of the Alestle is free. Additional copies cost \$1 each.

The Alestle is a member of the Illinois College Press Association, the Associated Collegiate Press, Student Press Law Center, College Newspaper, Business & Advertising Managers.

The name Alestle is an acronym derived from the names of the three campus locations of Southern Illinois University Edwardsville: Alton, East St. Louis and Edwardsville.

The Alestle is published on Thursdays in print and on Tuesdays online during the fall and spring semesters. A print edition is available Wednesdays during summer semesters.

For more information, call 618-350-3528.

Have a comment? Let us know!

Send us an e-mail: opinion@alestlelive.com
The Alestle
Campus Box 1167
Edwardsville, Ill. 62026-1167



Administration sending mixed message on sustainability

Now that we're all settled in a bit at school, I thought I'd share something that has been bothering me a bit as of late.

A couple of weeks ago as the new freshmen moved in, there was, as many of us know, a

day as opposed to the day before, when the freshmen were required to attend welcoming events. I remember my freshman year when I received my own reusable bottle the Friday I moved in. So, I asked a staff member present at the lunch why that was. Her answer was along the lines of, "Today is focused on volunteerism and community and citizenship. We thought it would be great to integrate sustainability into today as opposed to during the other welcoming events."

I suppose that make sense, but let us be honest. How many incoming freshmen who just moved in on a Friday before school starts have woken up the following Saturday at 7 a.m. to go pick up trash in a cemetery? The answer is a significantly low percentage. The point? Our goal as a student organization is to raise awareness of sustainability and to get these bottles into as many student hands as we possibly can.

Are the ones who volunteered on this day the only ones who deserve a chance to benefit from our sustainable efforts? I'd like to think not.

I probably could have let this all go. We give away bottles at so many events throughout the year, so the freshmen who were sleeping in a pre-hungover state that Saturday will most likely eventually receive one. Unfortunately, it wasn't so simple. Why so? Well, there was a lineup to get

lunch: you grab a bottle and then a brown bag with a sandwich and then a drink... something like that. At the beginning of the line to get lunch that day, before the display of our reusable water bottles, were two big coolers filled with bottled water.

I'll let that sink in for a bit.

For some reason, this seemed a bit illogical to me. Grab a bottle of water, and now grab then a reusable bottle for water. Then stop drinking bottled water. I asked the director to move the bottled water to the end of the food line, which he kindly agreed to. Still, it didn't stop students from taking the free bottled water after getting a free reusable bottle that could be so easily filled up without producing more plastic waste.

What kind of a message does this send to these freshmen? "Yes, we care about sustainability here at SIUE, but allow us to overtly contradict ourselves and totally confuse you as to what sustainability exactly is." Open the school pamphlet sent out to all incoming and potential freshmen, and you will find a two-page spread on how we are all about sustainability here on campus. This incident was not supportive to us as a student group, and I was quite disappointed by the misleading representation.

Kim Lee is a senior English education major

Letter to the Editor

"volunteer" day incorporated into move-in weekend. First off, I think this is great, and I was happy to see so many incoming students wide awake and making our community a better place. The students spent a majority of their Saturday morning cleaning up trash at various locations in the area and were then treated to lunch by the Morris University Center. All good things.

I, and Wolf "Mark" Veverka, the SOS vice president, found out that this was also the day the campus would be handing out our ever famous reusable green water bottles. I'm sure many students received their own during move-in weekends in the past, or at some point throughout the years. Of course we wanted to be directly involved with the bottles, passing them out and asking students to fill them up at our filtered water stations around campus.

My first issue of concern was as to why the bottles were being handed out on the "volunteer"

Study too hard, fail in the real world

By the time they reach college, most have heard about the expected amount of study time per credit hour. According to academictips.org and many professors around campus, for each "easy" credit hour, a student should spend two hours outside of class studying, three for each

Victoria Mizel
Alestle Reporter

"average" credit hour, and four for each "difficult" credit hour.

For example, my 200-level Principles of Environmental Science class — an easy class — should take me six hours of outside work and study during the week. Likewise, my 300-level Literary Theory and Criticism class should take me at least 12 additional hours per week.

I know many people who have flown through college thus far without much academic stress and who would vehemently deny the need for 12 hours of study time in a week. However, most of the people I know would agree that these are fair estimations of reality.

The majority of my time last year was spent studying. Even when I had studied my time away, there was always more studying to do. So to hear that I should be spending at least 12 hours outside of class on homework and studying was like hearing that I should be eating lunch at lunchtime. Thank you, Captain Obvious.

This year, however, life looks a lot different. Like 40 percent of full-time students and 73 percent of part-time students, according to the National Center for Education Statistics, I have a job that takes time. I also have social commitments that extend well beyond Friday and Saturday nights.

With 16 credit hours, each week I should be theoretically spending around 48 hours studying, between 12 and 15 hours working and, assuming the recommended eight hours of sleep a night, 56 hours sleeping.

In a 168-hour week, that leaves at most 36 hours in the week for eating, exercising, relaxing, recharging and spending time with friends or family. That's not even mentioning those going

into highly academic professions who are spending far more than the recommended study time hitting the books or those working more than 12 hours a week.

There are students who put in the recommended amount of study time and get the grades to show it. However, these students do not always go on to be the most successful in the real world.

Students who devote all their time to studying are often shocked when they graduate and find that, in real life, there are not endless hours to fill with study time. Students who instead manage to find a balance between decent grades, work and quality social time are often much more successful upon entering the real world.

In the end, it is not an A+ that's going to get you where you want to be, it's learning how to settle for that B and using the time you saved wisely.

Victoria Mizel can be reached at 650-3524 or vmizel@alestlelive.com.

Let students drop one class per semester at no charge

Between parking fees, the cost of food, rent and extra supplies for classes, college is definitely not a cheap endeavor.

The irony that exists between the money required to pay for an education and the money that does, or in many cases, does not exist in students'



Ashley Seering
Lifestyles Editor

pockets, is almost laughable. The cold hard truth is that universities are never going to stop asking for ridiculous amounts of money, and college students are never going to stop being poor.

Just a few days ago, a costly school policy was brought to my attention when a friend of mine decided to drop a class after realizing her new internship would conflict with it every week. The policy states that the last day of the second week of classes, a student who decides to drop a class will receive a full refund. However, at the end of the fourth week, students only receive a 50 percent refund of their fees and tuition for that class.

There are many reasons why a class can or should be dropped. Some of them are legitimate, like a conflicting internship schedule or the realization that the class just isn't for you. Some of them just reflect laziness like the, "I decided getting up for an 8 a.m. class was too hard after staying out until 3 a.m. every night," excuse.

With that said, the drop policy should be

changed to assist students and their bank accounts.

After two weeks of a class, it is not always possible to tell whether or not you will do well in it. Classes rarely have a test or project due within the first two weeks, and most of the time the entire first week is spent doing housekeeping tasks like going over the syllabus and making sure everyone has the right textbooks.

The drop policy should allot students a one-time free drop, in which they could get a full refund if they drop a class any time before the halfway point for one class per semester. This would benefit students who need to get out of a class they cannot handle before it puts them out hundreds of dollars.

Students will be able to experience a test or two and as well as more involved class projects. If they discover the class is not for them or if something in their schedule changes, they can easily get out of what is usually a very messy, costly situation.

This change would benefit students while making sure it does not get used too often, since each student is only allowed one free pass. Alleviating some of the stress in the lives of young adults, some of whom struggle to even afford food for the week, will make the university a more accommodating place for the individuals who ensure that this institution even exists.

Ashley Seering can be reached at
aseering@alestlelive.com or 650-3525.
Follow Ashley @AshleySeering.

Tuition refund policy best left unchanged

Every semester, students drop classes. Every semester, students complain that they are not able to receive their full tuition refund when they drop a class after the fourth week.

The university policy of providing a full tuition refund for classes dropped within the first two weeks and a 50 percent tuition refund for classes dropped in the third and fourth weeks is very generous.

If students were allowed to drop classes at any point, without repercussion, every student on campus would pay for the sins of the few.

The university must plan class schedules well in advance to determine the number of professors needed and facility requirements. Class sizes are



Roger Starkey
Opinion Editor

restricted to the number of seats in the classroom.

SIUE cannot overbook classes like an airline overbooks seats. Every semester, students are unable to register for needed classes. Many are forced to spend an extra semester, or even an additional year, in college as they wait for required classes to become available.

Because so much money is at stake, students are forced to carefully consider the classes for which they register. If students were allowed to register for additional courses each semester, knowing that they are trying some

out to determine which they will drop, the number of available seats would drop and more students would be locked out of classes and forced to spend additional time on campus.

Tuition would have to be increased to compensate for the amount of money the university would refund each semester. Budgets are based on student enrollment and a reasonable assumption about the number of credit hours each student takes. It is very plausible that budgeting based on the whim of college students could lead to financial ruin.

The refund policy teaches students valuable lessons they will need after college. They are forced to plan and adhere to those plans. They are forced to endure situations that are not ideal.

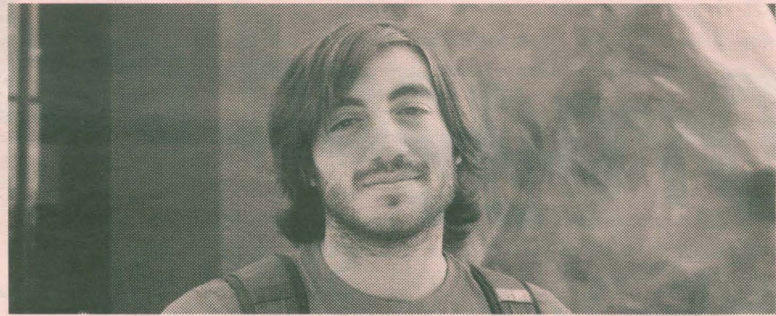
As much as I enjoy my time at SIUE, I do not want my stay here extended because others have decided they would rather spend an extra year in college than get up for their 8 a.m. classes. I certainly do not want the tuition guarantee program to be revoked and my tuition increased, for the same reason.

I understand that there will be circumstances in which a person has a legitimate reason to drop a course after four weeks. I have sympathy for them, but sometimes we have to accept our fate for the greater good.

Roger Starkey can be reached at
rstarkey@alestlelive.com or 650-3525.
Follow Roger @roger_j_starkey.

Speak Out

Do you think the refund policy for dropped classes is fair?



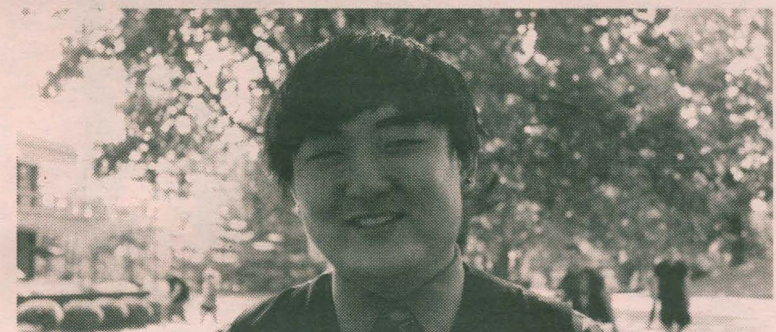
We should have three to four weeks to get a full refund. We don't know before then how the classes will go.

Michael Khoury
Junior pre-pharmacy major



As long as the policy is publicized, I think it's enough time. The problem is that students aren't made aware of it.

Jessica Patterson
Junior English education major



The policy is pretty generous, but I don't think I'd be able to find it because getting information from the SIUE home page is like going through a maze.

Christopher Cho
Sophomore engineering major



If you are going to drop a class, you should know within the first few weeks. The fees are fair because you are taking someone else's spot in the class.

Lexi Karcher
Junior human resource management major

Do you think the refund policy for dropped classes is fair?

Answer our poll on www.alestlelive.com!

Dragged out for a wild time

Sixth annual drag show proves divas will always dominate



ROGER STARKEY
Alestle Opinion Editor

On a night with tornado warnings active throughout the area, it was fitting that a queen named Siren hosted Delta Lambda Phi's sixth annual Drag Show.

Siren served as emcee and star entertainer at the show on Friday. She came out cursing, and cursed often. Siren openly ogled an audience member's breasts and made extremely suggestive sexual references to another person in the crowd.

Senior speech communication major Julian Glover, of Bloomington, Delta Lambda Phi's treasurer and drag show chairman, said the nature of drag is very profane and attempting to limit profanity would be disrespectful to the craft.

"It makes no sense at all to put a muzzle on these queens," Glover said. "If I set limits, it would show that I didn't understand the art of drag."

The flyers promoting the event this year had a warning that the show was for mature audiences. The warning was necessary after Glover noticed a child in the audience last year.

Siren cursed like a man whose favorite team had just lost the Super Bowl, but her appearance was completely feminine. The process of transforming from "the gayest [expletive] in South St. Louis" into Siren is time consuming.

"Before every show, I shower and shave, which takes about 30 minutes," Siren said. "I paint my face for about an hour and a half, and then I spend another 15 minutes getting dressed."

It takes only 15 minutes to get dressed, but the preparation takes at least a week. Underneath the seven pairs of pantyhose and tights Siren wears are hip pads that she has handcrafted.

"You can't buy hip pads," Siren said. "I carve them out of couch cushions and then place them between my mattress and box spring for about a week to get them to be the correct size and shape."

Siren fashions her breasts using a complicated process that involves the alterations of two bras and a stuffing of Poly-Fil. Choosing your bust size, she said, is a matter of personal choice.

"I started with a C cup because I always thought that looked best on women," Siren said. "But that just didn't look good on my body, so I went for a D cup."

The 10-year drag show veteran is from Bonne Terre, Mo., a small town about 60 miles south of St. Louis. According to the 2010 federal census, Bonne Terre has a population of less than 7,000.

“Creating a person seems so much more interesting than other things you can do...”

Siren
Drag queen and emcee

With a city slogan of "Good Earth, Good People," Bonne Terre does not seem like a place that would give rise to a drag queen.

Siren was not raised with a typical, small town upbringing, however. Her mother was openly bisexual and exposed Siren to a couple of movies that set Siren on her way.

"I saw 'The Rocky Horror Picture Show' for the first time when I was about eight, and I saw 'Priscilla, Queen of the Dessert' as soon as it came out," Siren said. "I always thought drag queens were fabulous."

Drag combines sewing, dancing, lip-synching and fashion, all to create a new person. This also drew Siren to drag.

"Creating a person seems so much more interesting than other things you can do," Siren said.

DRAG SHOW | pg. 7



Preparing for their first number in Delta Lambda Phi's sixth annual drag show, drag queens Paris Versace and Robyn Hearts apply their finishing touches backstage. | Photo by Briana Collier / Alestle

DRAG SHOW | from pg.6

The cofounder of GlitterBomb productions, a company that provides drag queens to local venues, said drag is too grueling to be a full-time occupation.

"The performances are physically demanding, the make-up can wreak havoc on your face and I'm very hairy, so I get razor burn all over," Siren said.

The process of pushing testicles into a body cavity and strapping down a penis as tight as possible might also be considered physically demanding.

When the music started in the Meridian Ballroom, it was easy to see that the performers had to be physically fit. The four drag queens and one drag king danced frantically and lip-synched several minutes during each of the two routines they performed. They went up and down the stairs to the routine multiple times and made their rounds in the audience, collecting dollar bills from their admirers.

The drag queens and king at the Delta Lambda Phi shows are always professionals. That detail was not lost on Glover the first time he saw the show on campus.

"To see professional queens at the show was quite a delight," Glover said. "I was really pleased to see that level of commitment to professional drag."

Junior psychology major Jared Lamkey, of Riverton, thought the SIUE show was better than the one he saw in San Francisco.

"This show was much more professional than the one in San Francisco," Lamkey said. "It was better."

As emcee, Siren was part stand-up comedian, part Confucius. At one point she shared a story of how she helped a neighbor put together a barbecue grill. The audience laughed throughout the story that Siren finished with the moral that, regardless of what you may think of someone, if they treat you with respect, you should respect that person.

Glover believes this wisdom is typical at drag shows.

"Drag queens have some of the most useful insights in the world," Glover said.

Roger Starkey can be reached at rstarkey@alestlelive.com or 650-3531. Follow Roger @roger_j_starkey.

Volunteers work to keep Gardens green and growing

DAVID PRUITT
Alestle Reporter

The Gardens depends on volunteers. One of the unique offerings of the SIUE campus is the 35-acre public garden. The Gardens was made in collaboration with the Missouri Botanical Gardens and offers scenic paths, an amphitheater and natural areas.

According to Park Supervisor Dan Mueller, The Gardens is separated from the rest of the campus and does not receive funding as a part of the SIUE grounds. It is maintained through donations and volunteer workers.

"Mostly it is donations from individuals and businesses. We don't have a percentage of student fees come to us or facilities maintenance," Mueller said. "The university's contribution is quite extensive with two administrators, but everything else is done with student workers and volunteers."

For students that need volunteer hours or just want to help out, The Gardens provides an opportunity that is close and allows students to get outdoors. Mueller said there were 15 scheduled volunteer days for the fall semester and nine in the spring.

"It's a close volunteer location. They can walk from Cougar Village and the residence halls and it's right here on campus," Mueller said. "They don't have to travel across the river or go off campus to get volunteer hours."

Junior mass communications major Debonie Lofton, of Detroit, said even though she does not like gardening, The Gardens provided a good fit for her volunteer qualifications. Lofton is on the Cougars' cross-country team and volunteers on the weekends she is not competing.

"This one was on campus and [volunteering] helps on your resume," Lofton said.

Psychology graduate student Kylie McCarver, of St. Charles, Mo., is the volunteer coordinator. McCarver said that students should wear appropriate attire for outdoor work but do not have to have a green

thumb to help out.

"I don't garden," McCarver said. "I actually have a hard time keeping anything alive at my own house, but if they want me to come out here and get rid of invasive species or weeds, I'm good at that."

According to Mueller, students can expect to rake leaves, pull weeds and clear brush. With the large natural areas that are maintained, volunteers are always needed.

Freshman pre-pharmacy major Dalton Ervin, of Danville, said it was important to get involved and make the most of the college experience.

"I have volunteered my whole life. In high school I was the vice president of my honor society and you had to do so many volunteer hours," Ervin said. "It's just a part of me and something that I want to keep doing."

Other students volunteered as representatives of their campus organizations. Junior pre-medical major Sadick Doubare, of Chicago, is a member of the African Student Association and wanted to help the campus.

"The main road into the school is right here, so that is the first thing that people see going into the campus," Doubare said.

Sophomore pre-pharmacy major Ehi Enaholo, of Chicago, also a member of the ASA, said he agreed with Doubare and felt that volunteering at The Gardens helps the campus' image.

"Appearance is really everything. When you go to someone's house and you see the lawn is mowed and everything's clean you look at it in a different light and figure that person is probably responsible," Enaholo said. "You see SIUE. You see The Gardens. You see that everything is nice and that means we take care of our campus."

Anyone interested in volunteering at The Gardens can find the schedule at siue.edu/kimmel/volunteer or visit the Kimmel Leadership Center.



Dalton Ervin, of Danville, volunteers to keep SIUE Gardens clean and thriving.

| Photo by Briana Collier / Alestle

David Pruitt can be reached at dpruitt@alestlelive.com or 650-3531. Follow David @DavidPruitt4.

Sports

Questions or comments regarding this section?
Contact Sports Editor John Layton at
650-3524 or sports@alestlelive.com

8 // The Alestle

www.alestlelive.com

Thursday, September 13, 2012



Volleyball finishes strong in Ohio

Men's soccer

Evansville	4-0	(0-0)
No. 2 Creighton	4-0-1	(0-0)
No. 22 SIUE	5-1	(0-0)
Missouri State	4-0-2	(0-0)
Central Arkansas	4-1	(0-0)
Bradley	3-1-2	(0-0)
Drake	1-4-1	(0-0)

Sept. 7 results

Northwestern 2, Drake 1
Missouri State 2, Eastern Illinois 0
Cincinnati 1, Bradley 1

SIUE 3, DePaul 0

Creighton 1, Santa Clara 0

Sept. 9 results

UW-Green Bay 0, Missouri State 0
Bradley 4, Portland 1
Central Arkansas 2, Butler 1

SIUE 1, UMKC 0

Drake 1, Northern Illinois 0
Evansville 2, Cincinnati 0
Creighton 1, Saint Mary's 0

Schedule for Sept. 14

Central Arkansas at Eastern Illinois
Lipscomb at Bradley
William & Mary at Drake

UC Irvine at Missouri State

SIUE at No. 16 Indiana

Old Dominion at Creighton



Women's soccer

Jacksonville State	6-1-1	(0-0)
SIUE	3-2-1	(0-0)
Belmont	4-3	(0-0)
Eastern Kentucky	3-3-1	(0-0)
Austin Peay	3-4	(0-0)
UT Martin	2-4-1	(0-0)
Tennessee Tech	2-5-1	(0-0)
Southeast Missouri	1-5-2	(0-0)
Eastern Illinois	1-6	(0-0)
Morehead State	0-6-1	(0-0)
Murray State	0-5	(0-0)

Sept. 9 results

Middle Tennessee 3, Belmont 0
N. Kentucky 4, Murray State 2
Northern Illinois 1, Eastern Illinois 0

SIUE 0, Missouri State 0

W. Carolina 1, Tennessee Tech 0
E. Kentucky 3, Col. of Charleston 0
J'ville State 2, S. Carolina State 0
Xavier 2, Morehead State 1

Sept. 11 results

Evansville 0, Southeast Missouri 0

Schedule for Sept. 12

Eastern Kentucky at Xavier

Schedule for Sept. 14

Alabama A&M at Murray State
Transylvania at Eastern Kentucky
UT Martin at Georgia State
Southeast Missouri at Memphis
South Alabama at Austin Peay
Mercer at Jacksonville State
Eastern Illinois at Butler

SIUE Athletics Upcoming events

Sept. 14	XC SIUE Cross Country Challenge	5:30 p.m.
Sept. 14	WTEN SIUE Fall Invitational	2 p.m.
Sept. 14	VOL vs. N. Illinois	6 p.m.
Sept. 14	MSOC at Indiana	6:30 p.m.
Sept. 15	WTEN SIUE Fall Invitational	8 a.m.



Junior setter Cori Harris returns the volleyball in a match at the Cougar Classic. At the Zips Invitational last weekend, the team went 1-2.

| Photo by Rebeha Blake / Alestle

GABRIEL SIMPSON Alestle Reporter

For the third straight week, the SIUE Volleyball team closed out the weekend with a win.

The Cougars (4-5) took part in the Zips Invitational on Saturday in Akron, Ohio where the team took on Binghamton, Youngtown State and host school Akron. After dropping the first two matches to Akron 25-19, 25-16, 25-21 and Youngtown State 15-25, 27-25, 25-15, 27-25, the Cougars were able to bounce back and defeat Binghamton in their first three-set match of the season 25-23, 25-18, 25-17.

Coming off two straight losses, Head Coach Leah Johnson said that the team simply wanted to show that they were better than how they played all weekend in the final match.

"I am very pleased about how we closed out the tournament," Johnson said. "The team showed a lot of urgency and wanted to represent the school and themselves with the style of play they wanted to be known for."

Junior Kelsey Augustine believes the team underperformed this weekend but is happy with how the team finished the tournament.

"We don't like to lose at all, so, when we do, it pushes us so much more," Augustine said. "We make adjustments and see what's working and what's not. We hate losing so we're glad we finished strongly."

Sophomore Hayley Norris believes this tournament helped the

team see some areas they need to address.

"We learned a lot from this weekend," Norris said. "We found some things that we need to work on in order to improve as a team. We will get back in the gym and get after it."

One of the things that the Cougars will be looking to improve upon is getting off to faster starts. In each tournament the Cougars have played in this year, they have lost their first game. This is a trend that has Johnson's full attention.

"It is something that we are addressing in practice. It can be a number of things, so our main focus is to be consistent," Johnson said. "Whether it's every throw we do in a game or practice, we need to be consistent on a day-to-day basis. Instead of identifying one thing, we just want to stay positive and always be consistent in the way we practice, warm up and play in games."

Johnson's message has gotten through to the team. Norris said they are practicing harder and harder each day.

"We have been in the gym working and working," Norris said. "We're excited to see the improvements that we have been making. We're moving towards the level that we want to be at."

The Cougars had a player named to the all-tournament team for the second straight week. Senior Sammi Minton took home that honor.

VOLLEYBALL | pg. 10

Bassmasters see positives after disappointing end to their season

ROGER STARKEY Alestle Opinion Editor

The National Guard FLW Central Conference Championship was not kind to the three SIUE teams that competed.

Jacob Hicks and Joseph Tischer were the Cougars' best finishers, placing 11th. The team of Brian Gass and Zach Hartnagel finished in 17th place, while Brad LeMasters and Justin Skinner finished 18th in the 20-team tournament.

LeMasters, a senior marketing major from Springfield, was not pleased with the results but said his team's strategy was the vol as the top five teams.

"Usually hindsight is 20/20 in fishing, but I don't know that we would have done anything differently," LeMasters said.

Heavy rain the week prior to the tournament caused Carlyle Lake to rise more than three feet. The conditions on the lake were not as bad as LeMasters expected.

"The water wasn't that muddy," LeMasters said. "The fish were shallower than I thought they

would be after the rain. It was similar to when we practiced."

LeMasters was philosophical about the lack of success he and Skinner experienced.

"We lost a couple of bites, but that's why they call it fishing and not catching," LeMasters said.

SIUE Bass Master's Club President Zach Hartnagel said he and teammate Brian Gass also had a problem corralling fish after they were hooked.

"We figured that we had 11 or 12 pounds worth of fish that we just couldn't get into the boat," Hartnagel said. "The fish jumped or spit the bait."

According to Hartnagel, he and Gass just missed the prime fishing area.

"We found out on Saturday that three of the top five teams were fishing in the same cove that we were, they were just on the other side of the boat dock," Hartnagel said.

Bass Master's Club adviser Keith Becherer and LeMasters said campus supporter for the anglers was



The Bassmasters Club teams that participated in the National Guard FLW Central Conference Championship pose for a picture at the weigh-in. Despite the disappointing results, club President Zach Hartnagel said the club still had a great year. | Photo by Mario Sdonas / Campus Recreation

BASS | pg. 10





Sophomore forward Christian Volesky gets a breakaway against the University of Missouri-Kansas City on Sunday. Volesky had several of SIUE's chances against UMKC, taking eight shots total. Head Coach Kevin Kalish said that is how soccer is sometimes: 'Goals are going to come in streaks. Next week, hopefully, they'll bury all those [chances].' | Photo by Kallin Haydon / Alestle

Men join national polls after latest wins

JOHN LAYTON
Alestle Sports Editor

Even though the men's soccer team won both of its games last weekend, it could suffer a big loss in a different way.

Junior goalkeeper John Berner sustained an injury in Sunday's 1-0 win over the University of Missouri-Kansas City (1-4 overall).

It was not clear what happened. In the second half of the game, the Kangaroos took a shot that Berner saved but let rebound back into play. Both teams went after the ball before it was cleared out of play.

Afterward, the Cougar goalkeeper was slow to get to his feet, but he resumed playing after a few minutes. Later in the half, when SIUE was preparing to throw the ball in, Berner sat down in his box.

A trainer ran out to attend to him and the two walked off the pitch. Freshman goalkeeper Kent Kobernus came into the match to replace Berner.

Immediately after the game, Head Coach Kevin Kalish said he did not know Berner's status.

After Friday's 3-0 win over DePaul University (1-3 overall), Kalish had nothing but praise for Berner's performance to this point in the year.

"I haven't seen too many goalies out there that are better, to be honest with you," Kalish said. "He's coming into his own and playing with a lot of confidence."

In some of the most recent national polls, the Cougars have entered the top 25.

The National Soccer Coaches Association of America and the College Soccer News polls has SIUE ranked no. 22.

Soccer America has SIUE at no. 25.

The Cougars are also ranked at no. 38 in the newest TopDrawerSoccer.com poll, which attempts to project the NCAA Tournament berths.

While senior forward Kevin Stoll said the rankings are an honor, he said they ultimately do not mean much.

"It means nothing if we lose the next few games," Stoll said. "It's not really permanent."

On Friday, the Cougars, now 5-1 overall with four shutouts, had to wait out a weather delay that lasted just less than three hours. Despite the wait, Kalish said the team was ready to play.

"When you get weather like that, you have to adjust and prepare accordingly," Kalish said. "I think the first half was a little bit tight. Overall, we had a good performance."

Senior defenseman Aaron Lantz scored his first goal of the year in the 38th minute of the game to give the Cougars a 1-0 lead going into halftime.

Kalish said getting the goal late in the first half, when the game was still up for grabs, was big for the team.

"It was a big one from Aaron," Kalish said. "Aaron's had a great year so far. He's a big player for us."

By the 60th minute, a couple more regular goal scorers put SIUE up 3-0. Senior forward Kevin Stoll sophomore forward Christian Volesky scored within 13 minutes of each other.

The Cougars had a tougher game Sunday, with senior midfielder Brian Groark scoring the only goal of the match in the 85th minute.

Stoll said it is always tough

to play a game Friday night and turn around and play Sunday afternoon, especially with this past Friday's game being delayed.

Kalish said it was an opportune time for Groark to score his first goal of the year.

Despite the 1-0 final score, the Cougars had a wealth of opportunities throughout the match.

"I think that's soccer," Kalish said. "Goals are going to come in streaks. Next week, hopefully, they'll bury all those [chances]."

Volesky had many of SIUE's chances, recording eight shots total with two on goal. Overall, SIUE took 18 shots and put seven of them on goal.

Kangaroo goalkeeper Kevin Corby was a big reason the Cougars scored only one goal. Corby made six saves in the match, with several of them coming at the end of a breakaway for the Cougars.

"I think in the final third we need to get a little better with our finishing," Kalish said. "With a little bit more composure, we make that game a little easier."

Stoll said the players knew they just had to keep working before they scored.

"It's only a matter of time until we broke them down," Stoll said. "That's what it would take, just to get that first goal."

SIUE's next game will be at 6:30 p.m. Friday at Indiana University. The Hoosiers are No. 10 in the National Soccer Coaches Association of America national poll.



Senior forward Kevin Stoll looks for a throw-in against the University of Missouri-Kansas City. Stoll said it is an honor to be ranked among the top 25 in the nation. | Photo by Kallin Haydon / Alestle

John Layton can be reached at jlayton@alestlelive.com or 650-3524. Follow John @johnmlayton.



Head Coach Derek Burton said the team had a positive performance: 'This was a good game against a very good Missouri State team.'

| Photo by Rebehka Blake / Alestle

Women draw with Mo. State

ROGER STARKEY
Alestle Opinion Editor

The women's soccer team ran its unbeaten streak to four games with a scoreless tie against Missouri State on Sunday.

The Cougars (3-2-1) and the Bears (3-5-1) both played their first draw of the year. SIUE outshot Missouri State 11-7.

Head Coach Derek Burton told SIUE Sports Information he was happy with how the team played.

"Today was a very positive performance for us," Burton said. "This was a good game

against a very good Missouri State team."

Freshman goalkeeper Jennifer Pelley made three saves on the way to her third shutout in four career starts. Pelley, who is the two-time reigning Ohio Valley Conference goalkeeper of the week, has a goals-against average of 0.42 this season.

Burton told SIUE Sports Information that Pelley and the defense played well.

"She was good today," Burton said. "The entire back line did a very good job today."

Sophomore midfielder Michelle Auer had the best opportunities on offense for the Cougars. Auer was able to get

off three shots on the day, all on goal. Junior forward Sarah Doggendorf and sophomore forward Samantha Jones each took two shots, but none were on target.

Meagan Iffrig did not play against Missouri State. Iffrig was removed from the Cougars' last match on Sept. 2 after a collision with the Northern Iowa goalkeeper. Senior forward Kristen Dailey replaced Iffrig in the starting lineup.

Compared to last year, the Cougars' defense has held opponents to nearly half a goal less per match. However, SIUE has created fewer shots and scored fewer goals

Burton said the decreased scoring can be rectified with some individual work by the players.

"It isn't that we aren't creating chances," Burton said. "We just aren't putting them away."

SIUE was scheduled to play Aug. 31 against Central Arkansas. However, the game was canceled due to severe weather.

The Cougars' next game is 1 p.m. Sunday at Korte Stadium, against Saint Louis University.

Roger Starkey can be reached at rstarkey@alestlelive.com or 650-3524. Follow Roger @roger_j_starkey.

VOLLEYBALL | from pg.8

According to Johnson, Minton is the player the team depends upon to get the team going in the right direction.

"She is the pulse of the team," Johnson said. "She keeps everyone on board. No matter the circumstance, she found a way to put our players in the best position to win."

Up next, the Cougars will host Northern Illinois at 6 p.m. Friday at the Vadalabene Center.

Gabriel Simpson can be reached at gsimpson@alestlelive.com or 650-3524. Follow Gabriel @LegendaryGSimp.

BASS | from pg.8

great. Twenty-five students rode the bus to the weigh-in in Carlyle. Becherer estimated that half of the students were members of the Cheerleading Club.

The cheerleaders may be featured in the television coverage of the tournament. NBC Sports will air the tournament at noon on Nov 11. Earlier press releases mistakenly noted the date of coverage as Dec. 14.

"The TV production crew got the cheerleaders up front and focused on them," Becherer said.

The tournament marked the end to the 2012 season for the Bassmasters Club, and, despite the disappointing conclusion, Hartnagel said the club has no regrets.

"We had an awesome year," Hartnagel said. "To get three teams into the [Central Conference] championship was great. No other school had more than two teams."

Roger Starkey can be reached at rstarkey@alestlelive.com or 650-3524. Follow Roger @roger_j_starkey.

— NOTICE —

The Fall 2012 issue of the
SIUE Annual Security & Fire Safety Report
is now available on-line at:

<http://www.siu.edu/securityreport>

The report contains campus safety and security information and crime statistics for calendar years 2009, 2010 and 2011; as well as fire prevention and safety information and fire statistics for 2010 and 2011.

This report is published in compliance with the Federal Student Right to Know and Campus Security Act of 1990, now known as the:
Jeanne Clery Disclosure of Campus Security Policy and Campus Crime Statistics Act

And the Higher Education Opportunity Act also known as the:

Campus Fire Safety Right to Know

You may also access this report on the SIUE Homepage <http://www.siu.edu>. Click on the *About SIUE* link then click on *Safety* under *General Information*. Under *Other Links of Interest* click on *Annual Security & Fire Report*.

The report is also available for review at the Lovejoy Library Circulation Desk on the Edwardsville Campus; the Biomedical Library Circulation Desk on the Alton Campus; the SIUE Satellite Police Station at the East St. Louis Higher Education Center; and the SIU Medical Library at the SIUE Springfield School of Nursing.

For those without computer access, a paper copy may be obtained upon request to:

Office of the Vice Chancellor for Administration
Rendleman Hall, Room 2228, Campus Box 1158
618.650.2536

Los Angeles Times Daily Crossword Puzzle

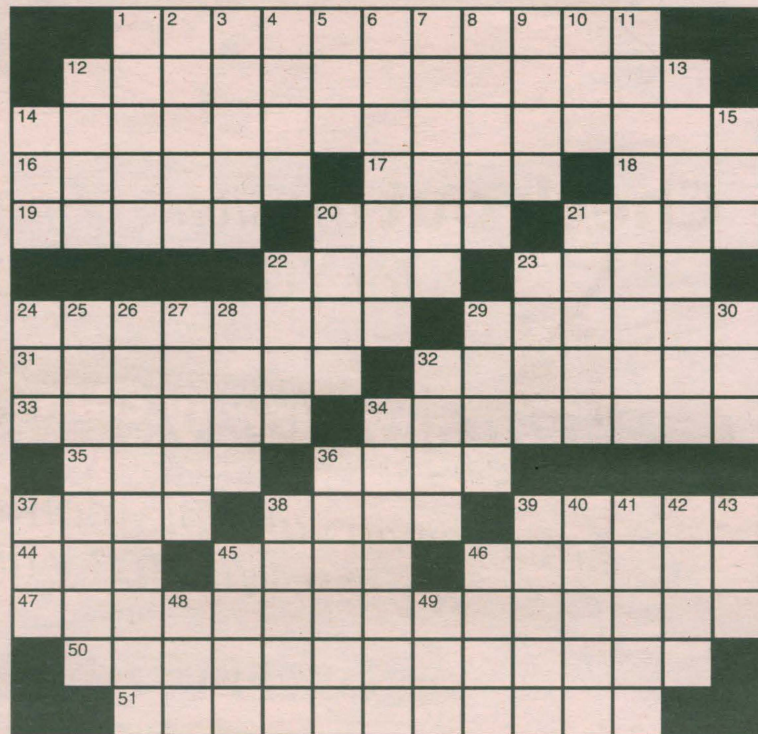
Edited by Rich Norris and Joyce Lewis

ACROSS

- 1 Bout with padded weapons
- 12 Source of a large reserve supply
- 14 Period, say
- 16 Setting direction: Abbr.
- 17 Gull-like bird
- 18 Pearl City punch bowl serving
- 19 "Gentlemen Prefer Blondes" composer
- 20 composer
- 20 Shooters, briefly
- 21 Go on (one's way)
- 22 Certain hustler's tools
- 23 Setting for Ariadne
- 24 Observation after "Clean your room!"
- 29 Pea family trees
- 31 Student's supper spot
- 32 "Oh no!" from Poirot
- 33 Showed contempt for
- 34 Where Daniel was incarcerated
- 35 Sellout signs
- 36 President under whom Texas was annexed
- 37 "___ be in England ...": Browning
- 38 Goggle
- 39 Fragment
- 44 Co-star with Betty, Rue and Estelle
- 45 Bartlett relative
- 46 Whistled at, perhaps
- 47 Tavern order
- 50 Characterized by extremes
- 51 Hybrid sport with seemingly incompatible components

DOWN

- 1 ___ hose
- 2 "Txxng & Drivng ... ___ Wait": AT&T ad tagline
- 3 BP unit
- 4 Hard to look at, in a way
- 5 Words with diet or dime
- 6 Turkey features
- 7 Circulars
- 8 Sikorsky and Stravinsky
- 9 '50s-'60s title detective whose show's theme was composed by Mancini
- 10 Breakfast choice
- 11 Figure with two legs askew
- 12 Matin preceder
- 13 Queen's mate
- 14 Button on older phones



By Jeff Chen

- 15 Razz
- 20 Figure (out), in slang
- 21 Districts
- 22 Lincoln's place?
- 23 Author of the novel "Doctor Faustus"
- 24 Suffix with robot
- 25 Of the best quality
- 26 "Everyone's a comedian"
- 27 Kid's retort
- 28 Extinct kiwi relatives
- 29 One who's at home on the range?
- 30 Nearest star to Pluto
- 32 Take advantage of
- 34 Like the Atkins diet
- 36 Leisurely walks
- 37 "Memoirs of a Geisha" prop
- 38 State runners: Abbr.
- 39 Highly seasoned pheasant stew
- 40 Used for cover
- 41 During
- 42 Russo of "Tin Cup"

8/30/12 Puzzle Solved

P	E	R	C	H	N	O	F	A	T	A	C	E		
A	L	E	R	O	P	U	L	S	E	T	A	X		
P	O	P	U	L	A	R	R	I	S	E	B	R	A	
A	N	O	N	Y	M	S	P	I	T	B	A	L		
A	N	C	L	E	M	S	P	H	O	T	A	T		
A	L	P	H	A	B	E	T	T	I	E	S			
L	E	E	N	A	N	O	S				C	O	O	P
A	A	R	A	R	D		N	Y	T	R	H	I	N	O
I	D	L	E			E	E	R	I	E	L	C	D	
				S	T	A	N	D	A	R	D	D	Y	E
J	U	N	I	O	R		P	O	N	E				
O	P	E	N	R	O	A	D		N	O	N	E	W	S
C	L	E		Q	U	E	E	N	S	S	I	G	H	S
K	I	D		U	S	O	F	A		E	A	G	E	R
S	T	Y		E	E	N	S	Y		S	L	O	W	S

(c)2012 Tribune Media Services, Inc.

- 43 34th pres.
- 45 Supporting part
- 46 Fraud
- 48 Cry of derision
- 49 Fiscal VIP

WILD Country COME RIDE THE MECHANICAL BULL THE 1ST WEEKEND OF EVERY MONTH

WED: Get in FREE w/College ID for the taping of St. Louis Country TV Show
Cruzan Rum Bucket Special • \$1.50 Shot Bar

THU: No Cover after 9 PM
OPEN DANCE FLOOR
W/DANCE MIX/VARIETY MUSIC

LIVE MUSIC
EVERY FRIDAY & SATURDAY NIGHT
Friday: \$1.50 Longnecks
Saturday: \$4.50 Pitchers

GET WILD! (618)346-6775 18+
"The Later it Gets, the Wilder it Gets!"
Rt. 157 to Collinsville, Turn at Union Planters Bank to 17 Gateway Drive

Social School can get you straights C's this semester

SOCIAL SCHOOL



Calm, Confident and Connected

10% DISCOUNT FOR STUDENTS

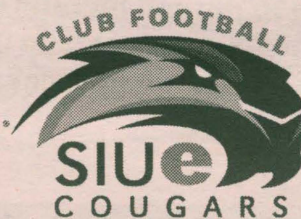
618-960-3431
www.socialschool.net

CAMPUS RECREATION

GET FIT, GET HEALTH, GET A PERSONAL TRAINER!

STUDENT & GROUP PACKAGES AVAILABLE. Includes FREE Fitness Assessment
Contact Jenelle Goga @jgoga@sive.edu

HOME OPENER VS. XAVIER UNIVERSITY! SATURDAY, SEPTEMBER 15TH AT 1PM REC PLEX CLUB SPORTS FIELD



VS.



SAND VOLLEYBALL TOURNAMENT
FRIDAY, SEPTEMBER 21 AT 2PM COUGAR VILLAGE COURTS ENTRY IS FREE!
REGISTER ONLINE 24/7 @sive.edu/crec/intramural

MERAMEC CANOE DAY TRIP
SATURDAY, SEPTEMBER 22ND \$6 FOR STUDENT \$15 FOR OTHER
Register at SFC FRONT DESK



SIUE.EDU/CREC

DESIGNED FOR LIFE



Quiz Bowl!

Friday, September 28, 2012 6:00 PM

MUC Conference Center

1st Prize: \$500
2nd Prize: \$300
3rd Prize: \$200
Food will be provided.



Campus Activities Board

ALESTLE CLASSIFIEDS GIVE YOU MORE!

Place your classified ad at a time convenient for you using our easy, secure online interface at alestlelive.com/classifieds

BASIC PRINT INSERTION RATES:
10 word minimum for all ads.

20 cents a word 1-2 insertions, per insertion
19 cents a word 3-4 insertions, per insertion
18 cents a word 5-19 insertions, per insertion
17 cents a word 20+ insertions, per insertion

Print Extras:
All bold, additional \$5

Web Extras Vary
Please schedule your ad carefully as we cannot offer refunds. Corrections must be noted on the first day the ad appears in the newspaper.

Deadlines:
By noon Monday for Wednesday issue
Having trouble? Call 618-650-3528 or e-mail classifieds@alestlelive.com

Alestle Office Hours:
MUC 2022
8 a.m. - 4:30 p.m. Monday-Friday

FT/PT Sales & Marketing Openings. Great for Students! \$400-\$800+/paid weekly; No Experience Necessary.
CALL 618.409.8994

Childcare Needed
Four children ages 11, 9, 6, and 3. Older 3 in school. Need some daytime hours for the 3-year old and some evening assistance with carpool to after school activities. A vehicle is required. Light housework also.

email for an interview
asagle@charter.net

FOR RENT

Furnished efficiency in LeClaire; DISH TV, internet, non-smoking male with references \$520/mo. incl all utilities (618)972-0948

2 and 3-Bedroom Townhomes
2BR, 1.5BA, \$825/month. 3BR, 2.5BA, \$1260/month. W/d hook-up., microwave, dishwasher, oven/range, refrigerator. Select units with free basic cable. Pet-friendly. Move-in specials!

Cherry Hills Properties
618.692.9310

MISCELLANEOUS

FREE Faith-Based Books!
www.sowersseed.org

FOR SALE

Public Auction- Quality 4BR home on 4-acre timberland in Bunker Hill, IL. Held Sunday, Sept. 16, 11 a.m. Sale listing and photos available at www.bauerauction.com. Contact owners for prior viewing. Cliff and Krickett Boyer, owners
618.585.4704
email superchief1@frontier.com

HELP WANTED

THE CYCLERY AND FITNESS CENTER IS LOOKING FOR BOTH FULL AND PART-TIME HELP IN BOTH SALES AND SERVICES. MUST BE SELF-MOTIVATED, GOOD WITH PEOPLE AND HAVE A POSITIVE ATTITUDE. NO EXPERIENCE NECESSARY. APPLY WITHIN. 618.692.0070.

NEW OFFICE HAS ENTRY-LEVEL POSITIONS

Part-time secretary: As needed basis. Fax resume and cover letter to 618.655-0892 or email to josephguram@yahoo.com

follow the alestle on twitter

@TheAlestle

Check out the site for YOUNG ADULTS

www.scu.onyourway.com



Enter to win valuable monthly prizes like a laptop, Wii, HDTV and more!

It's all FREE... no catches! (seriously)

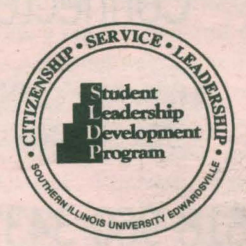
New Account Special!
Open a Savings and Checking Account & get \$50* when you sign up for debit card

*If savings account is closed within 365 days, initial deposit remains at Scott Credit Union. Must open savings, checking, and debit card to qualify. Offer expires 12/31/12

ALEST12



Visit www.scu.org for a list of branch locations.



MODULES
Student Leadership Development Program & Volunteer Services

Modules

Building Your Resume — 2 p.m., Sept. 18
MUC University Club
Career Development Center staff

Cross-Cultural Awareness — 2 p.m., Sept. 19
MUC International Room
Alexandra White
Community Director of SIUE University Housing

SLDP Reminders....

Volunteer Projects

- | | |
|-------------------------------------|--------------------------------------|
| Sept. 13 – Project Read Training I | Sept. 21 – The Gardens at SIUE |
| Sept. 15 – St. Vincent de Paul | Sept. 22 – Willoughby Farm |
| Sept. 15 – Lutheran Senior Services | Sept. 27 – Project Read Training III |
| Sept. 20 – The Gardens at SIUE | Sept. 29 – Granite City APA |
| Sept. 20 – Project Read Training II | Sept. 29 – Walk to End Alzheimer's |

For more information and the calendar, contact: Kimmel Leadership Center at ext. 2686 or visit the website www.siu.edu/kimmel

NWIC: Taste of Culture & Food Chat

Taste of Culture: Hispanic
Tuesday, September 25, 2012
11:30 AM
MUC University Center, Goshen Lounge

Mariachi Los Compadres will be coming out to do a live performance for this event. Menu items will include chicken quesadillas, cheese quesadillas, beef quesadillas, Mexican churros, and virgin margaritas on the rocks.

Food Chat: Choosing a Career
Thursday, September 20, 2012
11:30 AM
University Club

Come join CAB and the Career Development Center for a lunch time presentation on how to utilize University tools toward your important decision of choosing a major. Free lunch will be provided.

