

# Alestle

ALTON - EAST SAINT LOUIS - EDWARDSVILLE

Thursday, March 28, 2013

www.alestlelive.com

Volume 65, No. 27

## SG approves national org. dedicated to sustainability

HEATHER FICEK  
Alestle Reporter

A new group on campus that will focus solely on renewable clean energy was approved in the Goshen Lounge on Friday.

Senior environmental sciences major Dan Burton, of Alton, and sophomore English and political science major Megan Waggoner, of Tamaroa, presented their organization's constitution before Student Government. Burton will be the president of the club until he graduates in May, at which time Waggoner will take over.

Focus the Nation is a national organization dedicated to the development of clean energy, according to its website.

"For us, our group is focusing on the technology aspect of clean energy, [and] also promoting it in a professional manner," Burton said. "It's a serious topic that we have to address, and why not get experience right now and get networking and things of that nature already set up?"

Focus the Nation has already garnered support from other organizations on campus.

"We have the Bio Club on board. We have the [Student Organization for Sustainability] club on board already. We have the Engineering Club on board already," Burton said. "Having those different groups together, I think, is a big thing that [brings] us together."

When the Student Senate



Residence Housing Association member Nick Laders presents a plan to revise the Resident Housing Association's constitution at Friday's meeting. | Photo by Brandon Allen/Alestle

voted on the organization's constitution, it passed unanimously.

"It's exciting," Waggoner said. "We've been working on this all semester."

Student Body President Erik Zimmerman finds the new organization different from others on campus.

"I think that it's a good group, and it will offer students who are specifically looking into clean energy ways [that will] not only benefit on campus, benefit

our campus, but benefit themselves afterwards," Zimmerman said.

Even though SIUE already has the Student Organization for Sustainability, Focus the Nation has a bigger reach.

"As I started looking at Focus the Nation versus SOS, at first I think, well those are the same organization," Zimmerman said. "But what I sort of realized is that Focus the Nation, being a national foundation/or-

ganization, sort of provides our campus and our students a lot more opportunities in clean energy that aren't available through SOS."

Senator and SOS secretary Maame Antwi, a senior biomedical major from Chicago, first heard of the national organization while at a conference for SOS in Los Angeles.

"I think it's a great opportunity," Antwi said. "L.A. was the first time I heard about sustain-

ability as a career."

Though it may seem that the two groups are almost identical, Burton said that SOS has been very supportive of Focus the Nation.

"SOS has been more than generous with helping us out. They tell us anything you need just let us know," Burton said. "We were originally going to be a subcommittee of them, but again we have a specific target that we want to [accomplish]. We felt that having a group specialized on that specific target, in this case the CSS center, is going to make things run more efficient, more organized."

The group's first big project is to make the Center for Spirituality and Sustainability completely self-sustaining.

Those interested in joining can contact the organization at [focusthenationsiue@gmail.com](mailto:focusthenationsiue@gmail.com).

SG also granted the National Community Pharmacists Association \$600 to attend the NCPA Annual Convention. The convention will be in October in Orlando, Fla.

NCPA president-elect Catherine Zollars, a second-year pharmacy major from Bethalto, told the Senate that the \$600 will cover the registration fees for those attending.

The money for this trip will come out of next year's travel budget.

SG also approved next year's annual allocations budget, giving 108 student organiza-

SG | pg.2

## Pay what you want for new menu item at St. Louis Bread Co. cafes

KAVITA KUMAR  
St. Louis Post-Dispatch (MCT)

It started off nearly three years ago as a small experiment at a Clayton cafe to test whether people would be willing to pay full price — or more — when there are no set prices, so those in need can pay less or nothing at all.

"But we never want to put the cart before the horse," said Ron Shaich, the company's co-chief executive and the driving force behind the concept. "So we want to see how this does, how it works, and how people respond."

Shaich said he wanted to find a way to bring the pay-what-you-want concept into more communities.

“What do you do? Nobody is watching. This is the same kind of thing. It's meant to create opportunities for people to do the right thing....”

Ron Shaich  
Co-chief executive of Panera Bread Company

After following it up with four more nonprofit cafes across the nation, Panera is now taking this concept to the next level.

Starting today, patrons will be able to walk into any of the company's 48 bakery-cafes in the St. Louis region (where it operates as St. Louis Bread Co.) and pay what they want for a new menu item: turkey chili.

If it proves sustainable, the "meal of shared responsibility" — as Panera calls it — could be expanded to other regions.

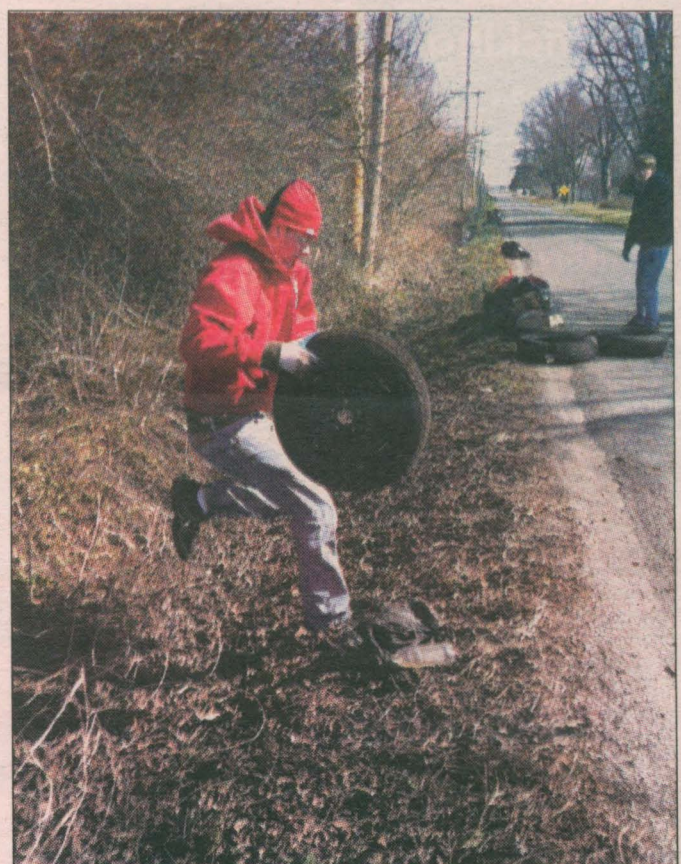
"We have five stores now," said Shaich, who often refers to the Panera Cares cafes as a test of humanity. "That's big by some standards, and it's still small. So how do we help more broadly?"

The shareholders of the publicly traded company would not be pleased if all 1,650 cafes nationwide were converted to this nonprofit model, he added.

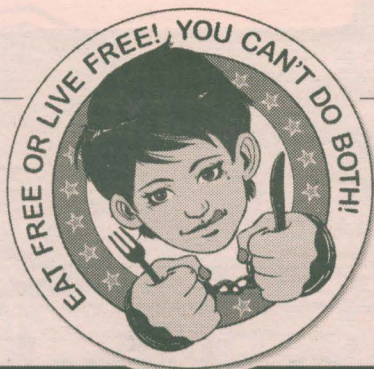
So instead, the Sunset Hills-based company came up with a single menu item. The meal, which

BREAD CO. | pg.3

## Tiring work



Geography graduate student Adam King, joined by other members of the Geography Club and Gamma Theta Upsilon, volunteered for the Missouri River Relief Organization's Confluence Trash Bash Saturday. Read more on pg. 3. | Photo courtesy of Stephanie Hill



# FREE FOOD!\*

\*Sure, it's free—after you sign a form temporarily waiving your First Amendment rights. Who really uses that amendment anyway? Just terrorists, yellow journalists and flag burners, that's who. Forget them. A couple of hours without the First Amendment in exchange for a tasty lunch is a steal for any law-abiding American, right?

**THURSDAY, APRIL 18 • 11 A.M.-1:30 P.M.  
DUNHAM HALL PATIO**

Brought to you by the Alestle, SIUE Mass Communications Dept., St. Louis Area Professional Chapter of Society of Professional Journalists and College Media Advisers

## BING FIELD PAINTBALL & AIRSOFT PARK



**WALK-ON PLAY EVERY  
WEEKEND: 10AM-5PM**

(618) 692-8271  
3231 Edwardsville Road  
Edwardsville, IL 62025  
www.bingfield.com

**JUST MINUTES FROM CAMPUS!**

### Human Trafficking

**Monday, April 1  
6-7 p.m.**

Hickory-Hackberry Room  
Morris University  
Center

Sponsored by  
Student Legal Services  
and the  
Pre-Law Association

Everyone  
is invited to hear

**Monica Stump,  
U.S. Attorney's Office  
Southern District of Illinois**

Speak about  
human trafficking

For more information, contact  
Steve Sperotto  
ssperot@siue.edu

SG | from pg. 1

tions the money they requested. The Senate approved a budget of \$32,050 for next year. This budget will not affect the amount available for travel next year, according to Zimmerman.

"It comes out of the same fee budget, but it's budgeted individually," Zimmerman said.

SIUE also gained two more organizations, the League of Legends of SIUE and the Table Tennis Club.

The League of Legends of SIUE is part of a brand new national organization, according to sophomore computer engineering major Ben Hanley, of Maryville, and sophomore biomedical sciences and biochemistry major Tyler Agnew, of Edinburg.

They explained to the Senate that the creators of the online multiplayer game have created an online league for college students to compete against each other.

The group currently has 51 students who are interested in becoming members.

The Residence Housing Association also presented a plan to revise the group's constitution.

The next Student Government meeting will be at 2 p.m. April 4 in the Morris University Center's Goshen Lounge.

Heather Ficek can be reached at hficek@alestlelive.com or 650-3527. Follow @HFicek.

# SIUE POLICE BLOTTER

### 3-21-13

An officer responded to a disturbance in Bluff Hall. Several people were in a verbal altercation, and one had damaged a wall. Sarah D. Philip was arrested for criminal damage to state-supported property. Philip was transported to the police department, where she was processed and released with a notice to appear.

An officer took a report of a mountain bike stolen from an Engineering Building bike rack. The bicycle is valued at \$400.

An officer issued Martyn L. Foreman a citation for failure to yield to an emergency vehicle on South University Drive at Stadium Drive.

An officer responded to a call about a vehicle illegally parked on the sidewalk near 528 Cougar Village. The owner could not be contacted, and the vehicle was towed. Taylor A. Angle was issued a citation for parking where prohibited the following day.

### 3-22-13

An officer took a report regarding a student losing a Nintendo DS in the Science Building.

An officer took a report regarding a laptop stolen from a vehicle parked in Lot B.

An officer took a report regarding a wallet lost at Woodland Hall.

An officer took a report regarding checks stolen from 527 Cougar Village.

An officer arrested Royale N. Jackson for failure to appear for a traffic offense in Pontoon Beach. The officer issued Jackson a citation for speeding 46 mph in a 25 mph zone on South University Drive at P2 Road. Jackson was taken to the police department, where she was processed and released with a notice to appear regarding the citation after posting bond.

### 3-23-13

An officer issued Nyanna E. Dixon a citation for expired registration on East University Drive at 157.

An officer issued Jacob R. Daesch a citation for speeding 66 mph in a 45 mph zone on South University Drive at Stadium Drive.

An officer issued a citation to Samantha N. Bauer for speeding 66 mph in a 45 mph zone on

South University Drive at Stadium Drive.

### 3-24-13

An officer took a report of a vehicle doing damage on an unauthorized access road off of Stadium Drive.

### 3-25-13

An officer responded to a call about suspicion of marijuana at Bluff Hall. The officer advised that he did not find marijuana but did find rolling papers and ashes.

An officer picked up keys found by staff of the Engineering Building. The officer was unable to locate the owner, and the keys were brought to the police department for safekeeping.

An officer met with a student who reported that another student, accompanied by three friends, verbally intimidated him or her while passing by in Bluff Hall. The officer spoke with the suspect.

An officer arrested Emilie A. Radziejewski for possession of cannabis less than 2.5 grams in Bluff Hall. Radziejewski was taken to the police department, where she was processed and released with a notice to appear.



**Edwardsville  
692-6000**

1522 Troy Road  
(inside Montclair Center)

### All-You-Can-Eat Buffet

**\$5.50**

New York Style,  
Thin or Original Thick Crust Pizza,  
Salad, Pasta and Dessert

Dine-in only.  
Not valid with any other offer or coupons. Limit one coupon per customer, per visit.  
Tax not included. Valid for up to 2 adults.  
Expires 2-28-13

**we  
like  
you.**

**do you  
like  
us?**

**fb.com/  
alestlelive**

**BREAD CO.** | from pg. 1

comes in a sourdough bread bowl, will be offered at the suggested price of \$5.89 with tax.

The item was developed to be rich in nutrients, protein and fiber, to nourish those who are not sure where they might get their next meal.

Even shareholders may have reasons to like this concept.

While the company says it will not directly profit from this new program, experts note that the company as a whole will likely benefit as a brand in terms of the positive feelings and emotions it will create in the minds of customers.

"Consumers are increasingly — particularly young people — looking for socially conscious values in the things they purchase," said Ken Harrington, director of Washington University's Skandalaris Center for Entrepreneurial Studies. "They are looking for corporations who are doing what Panera is doing."

Such a charitable consideration can tip the balance when people choose which businesses to patronize.

In fact, he said studies have shown that consumers are willing to spend 10 to 15 percent more on items to support values or causes they share.

The idea is not lost on Panera, whose recently launched marketing campaign encourages customers to "Live Consciously — Eat Deliciously."

**Food insecurity**

The pay-what-you-want chili, Shaich added, is also meant to help elevate the discussion of food insecurity at a time when the unemployment rate continues to be fairly high.

According to the U.S. Department of Agriculture, about 15 percent of Americans live in food-insecure households.

2011 were unsure whether they would have enough food to meet the needs of family members.

"We want to challenge the status quo in St. Louis to understand this issue and vote with us in helping to pay it forward," Shaich said. "Our commitment is we don't make anything on this."

If patrons pay full price for the

the cost for families to stay close by to hospitalized children.

Panera also donates tens of millions of dollars in leftover products and has recently partnered with Feeding America to channel donations collected in its stores to food banks.

In the case of Panera's pay-

era. If it does not work, they will end it.

He said the general competitive landscape in which Panera jockeys other restaurants is more likely to keep him up at night rather than this pay-what-you-want model.

"Do I wake up in the middle of the night about the 'meal of

profit cafe in Clayton, the company has opened other Panera Cares cafes in Detroit, Portland, Chicago, and most recently, Boston.

Panera spent \$1 million to build the Boston cafe, which it gifted to the foundation and opened in January.

These cafes have ups and downs, but they have mostly stabilized and bring in about 70 to 75 percent of the retail prices of menu items, Shaich said.

That is roughly enough to sustain the cafes. Panera's foundation kicks in support to fill in any gaps.

Of course, one of the challenges with this model is that it requires a leap of faith on the part of donors that those who are not paying the full price actually need the help and are not gaming the system.

To that end, there are checks in place. As with the nonprofit cafes, Panera discourages take-out orders and asks that people limit themselves to one free or reduced-price meal per day.

For Shaich, the human behavior element has been one of the most fascinating aspects of this experiment.

While there have definitely been people who have tried to abuse the system, overall, he said, the results so far show that most people have been responsible.

He said it is not unlike the question of whether or not you should leave a tip for the housekeeper who cleans your hotel room. "What do you do?" he said. "Nobody is watching. This is the same kind of thing. It's meant to create opportunities for people to do the right thing."

*Alestle News can be reached at news@alestlelive.com or 650-3527. Follow @TheAlestle.*



Josh Hopwood works the bakery area at Panera's Community Cafe in St. Louis on Oct. 4, 2011. The cafe is a nonprofit operation and has a suggested menu price, but customers pay what they can. | Photo by Elle Gardner/St. Louis Post-Dispatch (MCT)

chili, they will be helping to subsidize the cost for those who don't pay, because the company will use the 10 percent profit margin on that item to fund the program.

Customers can donate to the "meal of shared responsibility" regardless of what they order from the menu.

Any net proceeds after the cost of the program is covered will be channeled to hunger relief efforts, Shaich said.

To be sure, most companies have some sort of charitable contribution built into them as a way to build trust and goodwill with consumers, said Darren Tristano, with food industry research firm Technomic.

Just think of the Ronald McDonald House, which helps cover

what-you-want model, Tristano said Panera may be better positioned to take on the risk of such a program because it is such a profitable company.

Panera made \$174 million in profit last year, a 28 percent increase from the year before. He noted that other companies take on some risk when they offer reduced prices or buy-one-get-one-free deals on new menu items — something that Panera doesn't usually do.

"Panera is not a discounting kind of brand," Tristano said. "So, they can afford to take these risks. If nothing else, it becomes a risk for this item."

For his part, Shaich doesn't see this "meal of shared responsibility" as "being a big gamble for Pan-

era. "No, not anymore than I wake up in the middle of the night and worry that somebody is taking advantage of our bathrooms — or our free Wi-Fi."

In recent months leading up to today's roll out, Panera has quietly tested the "meal of shared responsibility" at one cafe in St. Louis and at about nine locations in Dallas.

As Panera tests out the pay-what-you-want turkey chili, it remains to be seen whether it will open more nonprofit cafes.

For now, Shaich said the company has not announced any plans for more such locations.

"This is not one versus the other," he said. "It's kind of a multipronged approach."

Since opening the first non-

**Hollywood ★ Tan**  
 COLLEGE STUDENTS  
 30-day unlimited tans or 8 visits \$19.99  
 Valid school ID must be presented  
 TEEN TANS  
 \$1 tans every day for students • Mystic HD tans \$10  
 1 week unlimited in bronzing beds \$12.88  
 Valid school ID must be presented, Ages 14-19 • Under 18 must have signature  
 23 Junction Drive Ste. A • Glen Carbon, IL 62034  
**(618) 656-8266**

**Looking for Housing?**  
 CHECK OUT  
[alestlelive.com/classifieds](http://alestlelive.com/classifieds)

**FRIDAY FREE FLICK**  
 GET READY FOR ONE MOTHER OF A ROAD TRIP  
 Barbra STREISAND  
 Seth ROGEN  
**THE GUILT TRIP**  
 SCIENCE LAB BLDG  
 SL 1105 (AUDITORIUM)  
 FRIDAY, APRIL 12, 2013  
 6:00 PM  
 Join CAB for this free pre-home release (before you can rent it at Redbox) film (Cloud Atlas). We will provide free popcorn and soda!  
 CAB Campus Activities Board

**alestlelive**  
 where to get your news  
 alton eastsaintlouis edwardsville  
 alestle



Tires, bags of trash and other items are stacked on the side of the road awaiting pickup during the Trash Bash on Saturday.

| Photo courtesy of Stephanie Hill

Volunteers at the Trash Bash collected many large items including this vacuum cleaner, which was pulled out of a creek bed.

| Photo courtesy of Stacey Brown

# Students get down and dirty with Missouri River Relief

**EVAN MEYERS**  
*Alestle Reporter*

The Missouri River Relief Organization hosted sites for the Confluence Trash Bash on Saturday, a one day event focused on the cleanup of areas near the Mississippi River. Geography graduate student Adam King, of Alton, said he is very aware of the problems pollution near the river can cause.

"I volunteered because I believe our environment and its overall health are very important, so to be able to clean trash that could potentially make its way into our water system [sounded] like an awesome idea," Hill said.

The Trash Bash has turned into one of the largest single day cleanups in the state, and this year had 16 SIUE students volunteering as well as volunteers from other nearby campuses.

These volunteers, consisting mostly of students from the Geography Club and geography honorary society Gamma Theta Upsilon helped clean up the area around the Chain of Rocks Bridge.

Senior elementary education student Stephanie Hill, of Alton, said while the event was only one day, they were still able to make changes to the area.

"We were able to remove countless bags of trash, 21 car tires and several old fans and car parts," Hill said.

Those helping in the event collected trash from a stretch of road by a residential area near the bridge. Stacey Brown, the sponsor of the Geography Club, said it was good to have volunteers who were ready to help and make an impact on the community.

"We had volunteers who were ready to get dirty and sacrifice their Saturday morning to help out the environment and this area," Brown said.

King said while they were using their time to help rid the area of trash, members of the community took their time to let the volunteers know the work was appreciated.

"We had plenty of people come by and thank us," King said. "I volunteered because the health of our environment is important to us all. It is nice to see other people see that as well."

In just one morning's worth of work, the students noticed a difference in what they had done for the Chain of Rocks Bridge area.

"At first, I was not excited about getting up and doing this on a Saturday, but after I was able to see all we accomplished in the small amount of time we were there, it was very humbling and rewarding," Hill said.

*Evan Meyers can be reached at emeyers@alestlelive.com or 650-3527. Follow @ronninix.*



## STUDENT GOVERNMENT ELECTIONS



VOTE on  
Monday, April 1st  
or  
Tuesday, April 2nd

**How to vote:**

Follow the directions in your email, and click on the link to access the ballot.

You need an active SIUE student email to vote!  
Have an active email, but don't remember your password?  
Stop by ITS, Room 0005, Lovejoy Library, with a photo ID.

If you need technical assistance when voting, call (618) 650-5500.

Questions?  
Contact the Student Government Office  
(618) 650-3818 or gfigger@siue.edu

## the Alestle

Alton - East St. Louis - Edwardsville

**Lexi Cortes**  
Editor in Chief

**John Layton**  
Managing Editor

**Brett Murray**  
Lifestyles Editor

**Mat Camp**  
Opinion Editor

**Roger Starkey**  
Sports Editor

**Gabriel Simpson**  
**Heather Ficek**  
**Josh Bovinette**  
**Evan Meyers**  
Reporters

**Rebekka Blake**  
Photo Editor

**Andrew Rathnow**  
**Brian Armea**  
**Brandon Allen**  
Photographers

**Liz Preston**  
Chief Copy Editor

**Lindsey Oyler**  
**Hailey Huffines**  
Copy Editors

**Michelle Beard**  
Online Editor

**Kia-Dre Bird**  
Managing Secretary

**Lydia Hawkins**  
Office Secretary

**Debbie Roberts**  
Office Manager

**Tammy Merrett-Murry**  
Alestle Program Director

### Letters to the Editor Policy:

The editors, staff and publishers of the Alestle believe in the free exchange of ideas, concerns and opinions and will publish as many letters as possible.

Letters may be submitted at the Alestle office located in the Morris University Center, Room 2022 or via e-mail at [opinion@alestlelive.com](mailto:opinion@alestlelive.com).

All hard copy letters should be typed and double-spaced. Letters should be no longer than 500 words. Include phone number, signature, class rank and major.

We reserve the right to edit letters for grammar and content. Care will be taken to ensure that the letter's message is not lost or altered.

Letters to the editor will not be printed anonymously except under extreme circumstances.

We reserve the right to reject letters.

### About the Alestle:

One copy of the Alestle is free. Additional copies cost \$1 each.

The Alestle is a member of the Illinois College Press Association, the Associated Collegiate Press, Student Press Law Center, College Newspaper, Business & Advertising Managers.

The name Alestle is an acronym derived from the names of the three campus locations of Southern Illinois University: Edwardsville, Alton, East St. Louis and Edwardsville.

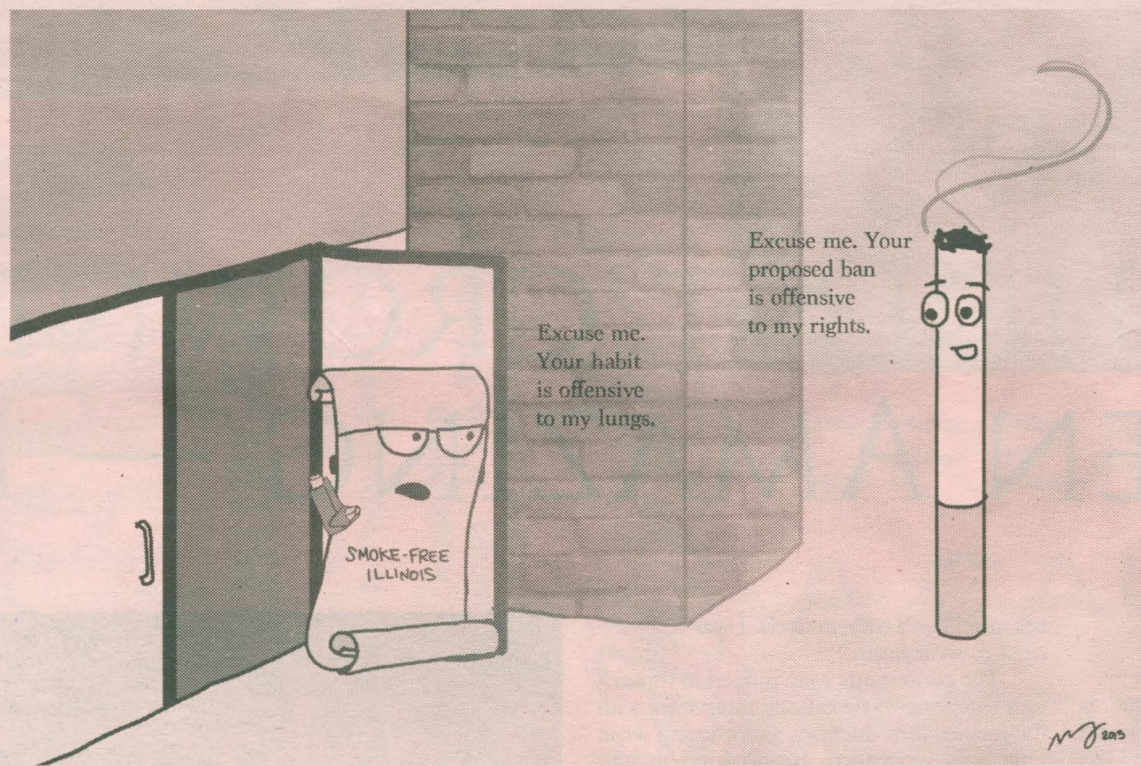
The Alestle is published on Thursdays in print and on Tuesdays online during the fall and spring semesters. A print edition is available Wednesdays during summer semesters.

For more information, call 618-650-3528.

**Have a comment? Let us know!**

Send us an e-mail: [opinion@alestlelive.com](mailto:opinion@alestlelive.com)

The Alestle  
Campus Box 1167  
Edwardsville, Ill. 62026-1167



## Smoking ban infringes upon students' rights

### A law won't deter students from smoking and is a waste of time

**MAT CAMP and HAILEY HUFFINES**

*Alestle Opinion Editor and Alestle Copy Editor*

A piece of legislation banning smoking on college and university campuses statewide has made it to the Illinois Senate floor effective July 1, 2014. However, we feel that our rights as American citizens are being imposed upon when the choice to smoke is taken away.

Cigarettes have always been legal, and it is absolutely absurd for it to suddenly become a topic of discussion when there are other important problems to be dealt with in this state. Illinois is dealing with a horrible financial crisis and serious educational troubles, yet there appears to be more concern with smoking on college campuses than dealing with the more pressing issues.

People may argue that smoking is unhealthy and affects those that do not smoke, but we have never had a problem with smoking on campus. If a person makes the choice to smoke and the choice is legal, then the government has no right to step in.

Many universities in the St. Louis area have followed through with a ban on smoking, but this doesn't stop people from lighting up.

Maryville University banned smoking Jan. 1, 2012, and with that replaced all of the butt buckets and smoker's posts with signs proclaiming their high and mighty smoke-free stance. The campus is now littered with cigarette filters because the smokers who disobey the rule, which appears to be a lot of them, have nowhere to dispose of the butts.

The stipulations there allow for smoking either off campus grounds or in personal vehicles. This is a major inconvenience — even for students on their relatively small

campus — and could never work for SIUE.

Many of the residents here may not have cars on campus, which leaves them with a 30-minute hike to get off campus grounds. Even if they do, there isn't time between classes to grab a smoke if you have to hoof it to the red lots.

This would also drive many students to seek housing outside the grounds of SIUE so they are free to smoke at their leisure in their free time. This law is completely unfair to students who live in Cougar Village or the residence halls because they cannot even smoke in their own homes.

With a campus as large as SIUE, a different plan would need to be implemented. Perhaps instead of completely banning smoking on campus, create designated areas that are out of the way throughout the campus, because our campus is certainly big enough, where smokers can relieve their stress. This would move them away from the entrances of buildings and away from people who don't smoke so they aren't bothering anyone.

If the legislation passes and smoking is banned, people will not suddenly stop smoking. While smoking has been banned inside restaurants and other public buildings in Illinois, which makes complete sense, they are still allowed to smoke outside. The idea of banning smoking everywhere on our wide-open campus is something completely different.

If the idea is for people to quit, this law is an incredible waste of time because students will still find a way to smoke. Infringing on the personal choices made by students is only interfering with the rights we have as American citizens.

*Opinion can be reached at [opinion@alestlelive.com](mailto:opinion@alestlelive.com) or 650-3525. Follow @The Alestle.*

## Smoking ban promotes healthier environment

### A law will decrease the chance of students picking up the habit

**LINDSEY OYLER and MICHELLE BEARD**

*Alestle Copy Editor and Alestle Online Editor*

College may be the most influential years of a young adult's life.

The educational possibilities are endless. Unfortunately, sometimes the influence doesn't stop outside the classroom. Legislators are finding that smoking is a habit that often begins after a person attends a university.

Because of this, legislation has introduced the idea of stopping all smoking tobacco use on campus effective July 1, 2014. That includes residence halls.

Kathy Drea, a lobbyist who supports Smoke-Free Illinois, is working toward smoke- and tobacco-free campuses. The new legislation would allow and encourage universities to enforce a no-smoking rule anywhere on campus grounds. Iowa, Oklahoma, Arkansas and Missouri have already begun smoke-free campus measures.

It's not too bad of an idea. If you consider the fact that most bars and restaurants have already banned smoking, it wouldn't be difficult to make our school, a state-supported public location, smoke-free.

According to Drea, a statewide poll of registered voters resulted in 77 percent supporting a smoke-free Illinois. Nationwide, there are already 1,129 smoke-free campuses.

While smoking is already illegal inside buildings and within 15 feet from building entrances, it doesn't seem to stop the billowing cloud of toxic chemicals from penetrating our lungs.

On rainy or snowy days,

Get your name in the paper *without* the speeding ticket!

Write a letter to the editor!

Send letters to

[opinion@alestlelive.com](mailto:opinion@alestlelive.com)

smokers tend to disregard the law in order to stay slightly drier or warmer. We're sure many other asthmatics consider it to be a nuisance. We find ourselves having to hold our breath in certain areas of campus. For us, an inhaler seems to be a necessity. Perhaps the legislation would minimize health risks and even the consumption of albuterol.

With such air pollution and SIUE's efforts to go green, the tolerance of the habit remains contradictory to the university's purposes. With the SIUE Gardens, the Eco-house and a new, environmentally friendly Art and Design Building addition, we expect more from the school.

The litter from cigarettes is a poison in itself and could hurt the nature that we take pride in being our campus environment. Grounds workers spend hours picking up after us already. A decrease in cigarette smoking could mean less litter.

Drea also said the legislation won't necessarily tell a school how to enforce the bill. Each university could choose how far to carry out punitive measures for smoking on campus.

According to Drea, 18- to 24-year-olds have the highest smoking prevalence rate, which puts college-age students at the peak of this trend. While it's close to infringing on a student's rights to autonomy, students also have the right to choose another school based on tobacco policies.

If you feel wronged, you can take your tuition money elsewhere.

*Opinion can be reached at [opinion@alestlelive.com](mailto:opinion@alestlelive.com) or 650-3525. Follow @The Alestle.*

**Should SIUE completely ban smoking on campus?  
Answer our poll at [www.alestlelive.com](http://www.alestlelive.com)!**

## Celebrating confidence

### STUDENT CROWNED

### QUEEN AMAZING — MISS

**HEATHER FICEK**  
Alestle Reporter

When the term “beauty pageant” is heard, most people think bikinis and world peace, but there is one aspect of the Miss Amazing pageant that makes it unique. All of the contestants have some sort of disability.

Senior speech communication major Tiffany Eickhoff, of St. Louis, won the title Queen Amazing — Miss at Missouri’s Miss Amazing pageant, Saturday.

There were nearly 90 contestants in the pageant, broken down into different age groups. Eickhoff competed in the Miss age group.

Jordan Somer started the Miss Amazing pageant in 2007 in her home state of Nebraska, according to the Miss Amazing pageant’s website. She decided to start the Miss Amazing pageant after her own experiences with beauty pageants. The pageant is now active in 25 states.

This pageant was designed for those with disabilities. Eickhoff, who has cerebral palsy, moves around campus in a wheelchair. She is able to walk with the help of canes.

“I used my manual wheelchair at the pageant because I’d be so exhausted, and I just didn’t want to fall on stage,” Eickhoff said. “And I wanted a chance to wear heels

because I can’t walk in heels. I was really excited to wear heels.”

The contestants were judged in three of four categories: one-on-one interviews with the judges, introductions and evening wear. Due to the snowstorm that occurred on Sunday the fourth category, the talent showcase, will have to be rescheduled.

Now that Eickhoff has won the title of

“It makes an important point to people. You can find great capability and great capacity in lots of different places. You just have to look at it correctly....”

Duff Wrobbel  
Speech communication professor

Queen for her division, she hopes to perform volunteer work around the area for the organization. Contestants donated canned goods as an entrance fee, and Eickhoff will help the other Missouri winners take the cans to a food pantry or shelter.

Eickhoff will compete in the national pageant in August, in Omaha, Neb.

When she has free time, Eickhoff enjoys country music and traveling. She has been in a Brad Paisley fan lyric video for his song “Southern Comfort Zone.” She appears about 2:20 into the video, holding a sign that says, “to take a good hard look around



Senior speech communication major Tiffany Eickhoff, of St. Louis, celebrates her win at the Miss Amazing Missouri pageant Saturday. | Photo by Rebecka Blake/Alestle



Contestants in the Miss Amazing Missouri pageant dance and wave after the first day of the pageant Saturday. | Photo by Rebecka Blake/Alestle

and be in the minority.”

“Country concerts, that is like my biggest hobby ever,” Eickhoff said. “Just like any other girl, I love to shop. I do martial arts. I love travel, I love to go on vacation, and I do a lot of stuff with my doctor up at Children’s Hospital. I volunteer for a lot of the sports programs with the cerebral palsy center because my neurologist works in there and has Cerebral Palsy as well.”

Eickhoff works with speech communication professor Duff Wrobbel as a member of the Undergraduate Research and Creative Activities program. Together, they have completed a study that compares everyday life in a wheelchair to everyday life being able to walk.

Eickhoff and Wrobbel recently returned from a trip to Texas A&M, where they presented their research findings at a conference. They have also submitted their article to a research journal with hopes of being published.

Wrobbel is happy for Eickhoff and is supportive of her due to his own experiences. “I’m not surprised in the slightest. Well, I should say I’m surprised a little just because

it would be crazy to just assume you’re going to win. She more than deserves it,” Wrobbel said. “I think the whole idea of the pageant is really cool.”

Wrobbel has a daughter who is competing in the Illinois Miss Amazing pageant next month.

“My daughter has Down syndrome, so I have a more than passing interest in disability rights issues and things like that,” Wrobbel said. “That’s probably why Tiffany and I have been working on disability issues on campus together. It makes an important point to people. You can find great capability and great capacity in lots of different places. You just have to look at it correctly.”

Anyone who wants to cheer on those hoping to represent Illinois can do so at 6 p.m. April 21 at Edwardsville High School. The entrance tickets cost \$10 and all of the proceeds will be donated back to Illinois communities. Tickets can be purchased online.

Heather Ficek can be reached at hficek@alestlelive.com or 650-3531. Follow @HFicek.



# SIUE ALUMNUS CREATES CLOTHING FOR A CAUSE

**JOSH BOVINETTE**  
Alestle Reporter

After his father was diagnosed with cancer, SIUE alumnus Pete Visintin Jr. decided to pursue a new avenue with his master's degree in business administration. He created Fight the Fight, a clothing company that donates half its profits to people overwhelmed by medical expenses.

Visintin, owner of Ageless Fitness, in Gillespie, said the experience he had in the hospital while his father was in surgery inspired Fight the Fight.

"I saw the people around me in the hospital and what they were going through," Visintin said. "They had a ton of medical bills, and I just thought, 'Why not create a company to help them out?'"

Visintin decided, rather than create a charity, he would create a 50/50 structure that he might be able to grow into a national company that helps families in need.

"I kept it a for-profit business that gives half the money away," Visintin said. "I want the opportunity to grow nationally as a business, so that the more we sell, the more people get helped."

Visintin also thought that if he could make the clothing line something that customers would like to wear, it would make selling the clothes and raising money much easier.

"I definitely wanted the clothes to be cool," Visintin said. "I wanted people to buy the clothes because they like the way they look and because they knew

"When Pete asked me how I felt about the idea, it just felt right," Liz said. "To make a difference and help people out, I told him I would back him up 100 percent."

Liz said she could not help but be inspired by her husband's ambition and eagerness to help others.

"It's neat to see that this idea that he came up with and followed through on has come such

"I think the world of what Pete is doing with Fight the Fight," Savant said. "He could have reacted in a lot of different ways when he found out his dad had brain cancer, but the fact that he just keeps giving to everyone is just amazing."

Pete said he hopes that Fight the Fight will inspire students at SIUE to go out and start something for themselves.

"Don't wait to get picked," Pete said. "Start your own company. You can change the world."

More information about Fight the Fight can be found on its Facebook page.

**“ Don't wait to get picked. Start your own company. You can change the world.... ”**

Pete Visintin Jr.  
SIUE alumnus, Fight the Fight creator

they were doing a good thing by purchasing them."

Liz Visintin, Pete's wife, said she clearly remembers the moment when Pete became inspired to create Fight the Fight.

a long way," Liz said.

Jim Savant, of Gillespie, said his family received help from Fight to Fight when his brother was diagnosed with Stage 4 lung cancer in late 2012.

Josh Bovinette can be reached at [dbovinette@alestlelive.com](mailto:dbovinette@alestlelive.com) or 650-3531. Follow @PhantomKowMedia.

# 'G.I. Joe: Retaliation' action packed, sealed with approval

**HEATHER FICEK**  
Alestle Reporter

"G.I. Joe: Retaliation" begins with the Joes being sent to recover nuclear weapons from a country being torn apart by a civilian uprising. Duke (Channing Tatum), his new friend Roadblock (Dwayne Johnson) and a battalion of Joes go in to secure the weaponry.

Through apparent betrayal, Snake Eyes (Ray Park) is framed, and the Joes are now defending a world and a nation that has apparently turned against them. As they process what has happened, they turn to Joe Colton (Bruce Willis), the original Joe, for help.

The storyline draws in viewers with thrilling action and witty one-liners. It does not disappoint for those hoping for action scenes similar to the first installment. Though the weaponry used is not as futuristic in this movie, the ballistics of what is used are relatively accurate - no 'yeah right' moments here.

At first, I was wary of the casting of Dwayne "The Rock" Johnson for the movie, but after watching him on the silver screen, he was the right choice for the part. His character has a very domineering role in the movie and Johnson portrayed it extremely well.

Don't expect a whole lot of familiar faces on the side of the Joes, a new cast is introduced but they live up to the standard set by the cast of "The Rise of Cobra."

"G.I. Joe: Retaliation" is everything that was expected. The ending gives Hasbro and Paramount the option for a third installment.

For a sequel, "G.I. Joe: Retaliation" is worth the cost of the ticket but not the 3-D experience. While 3-D did bring the movie to another level for the most part, the hand-to-hand combat scenes were difficult to follow. Save the couple extra bucks for a soda.

And don't bother sitting through the credits; there's no teaser for a third movie.

**Directed by:** Jon M. Chu  
**Cast:** Dwayne Johnson, Channing Tatum, D.J. Cotrona, Jonathan Pryce.  
**Release Date:** March 28  
**Rating:** PG-13  
**Run Time:** 110 minutes  
★★★★☆

Heather Fickel can be reached at [hfickel@alestlelive.com](mailto:hfickel@alestlelive.com) or 650-3531. Follow @HFickel.



'G.I. Joe: Retaliation'

| Image by Paramount Pictures via imdb.com

# Sports

Questions or comments regarding this section?  
Contact Sports Editor Roger Starkey at  
650-3524 or sports@alestlelive.com

8 // The Alestle

www.alestlelive.com

Thursday, March 28, 2013

## Records fall at first outdoor meet of season



Senior distance runner Aftan Noon tracks Rebekah Lawson of Southeast Missouri during the 3,000-meter Saturday at Korte Stadium. Noon passed Lawson on the final lap to win the race. Photo by Andrew Rathnow / Alestle

**EVAN MEYERS**  
Alestle Reporter

SIUE began its outdoor track season last weekend by hosting Southeast Missouri State and Illinois State in the Cougar Classic at Korte Field. Both the men's and the women's teams finished in second place behind Southeast Missouri.

Despite the men's second-place finish, sophomore sprinter Ahmad Evans said the team was prepared and ready to start the season.

"I think the team showed they are ready to work hard," Evans said. "I was impressed with how we came out today as a whole. This is a team that is going to push itself all the way through conference."

Evans took first place in the men's 200-meter, running a time of 21.17 seconds and breaking his own school record. His time is good enough to qualify for eighth in the nation so far this year.

In a close race, Evans took second in the men's 100-meter coming in just behind SIUE freshman sprinter Darius Smith. Both ran well enough to qualify in the top 30 nationally with Smith's 10.54, placing him 24th in the nation.

Sophomore thrower Elizabeth Hampl set a new school record in the women's hammer throw with 184 feet 10 inches. The throw places her 17th nationally. Senior Colleen McDonough placed second and also broke the old school record with a throw of 182-5.

Senior distance runner Aftan Noon took first place in both the women's 1,500-meter and 3,000-meter runs. In the latter, Noon

TRACK | pg. 10



Sophomore sprinter Ahmad Evans cruises to victory in the 200-meter dash Saturday at Korte Stadium. Evans broke his own school record with a time of 21.17 seconds. Photo by Andrew Rathnow / Alestle



Junior Josh Thomas gets set in the starting blocks before the 110-meter hurdles. Thomas finished second. Photo by Andrew Rathnow / Alestle

## Why I absolutely love, hate still love March Madness, I think

### From the blogs

Round two of March Madness started Thursday. At the beginning of the day, before the games started, I had a perfect bracket and the hope of the tech club president about to ask the homecoming queen to prom.



**John Layton**  
Managing Editor

A week later, I have a perfectly embarrassing bracket. I'm not surprised—I did a poor job of predicting the tournament. I'm no college basketball expert, just like most sports writers.

Honestly, who can claim to be one? No one out there has a perfect bracket, unless you're Dustin Hoffman, and there's nothing wrong with that.

I guess if I were the gambling type and had large sums of money riding on the tournament or the games, there might be something wrong with a bracket riddled with crossed out universities and spots of saliva collected while I cursed my picks.

Otherwise, you get to enjoy an incredibly exciting, dramatic stretch of games. If you can't find enjoyment in that, I feel sorry for you, Ebenezer.

This year is especially bad for me, and the Sweet Sixteen hasn't even started. Eleven of my picks in the second round were wrong. I had New Mexico in the Final Four. They didn't win their first game... and they played Harvard.

Come on, it's Harvard! I expect my bracket to be

less than perfect, but does it have to happen at the hands of a bunch of guys with the middle name Winston who summer in the Hamptons? Three of the teams I picked to make the Elite Eight lost. Out of sixteen possible teams in the Sweet Sixteen, I correctly picked seven.

In short, my bracket did about as well as an alley cat at Westminster.

It's the same story every year. By the late games on day one of the second round, my bracket is, at best, hanging on to respectability. By the end of the next day, it's the laughing stock of whatever pool I'm in.

The tournament must be named after what it induces in sports fans every March. It has to be some sort of madness that drives us to think we have a chance at picking these games.

Take, for example, this year's darling Florida Gulf

MADNESS | pg. 9





Senior catcher Samantha Stanicek in action earlier this season against the University of Tennessee at Martin. The Cougars won three of four games Saturday and Sunday. | Photo by Brian Armea / Alestle

# Softball wins three of four against conference rivals

**GABRIEL SIMPSON**  
*Alestle Reporter*

The softball team continued its winning ways, finishing the weekend 3-1 in Ohio Valley Conference play.

The Cougars (19-8 overall, 4-2 OVC) have gone 13-3 since the beginning of spring break. Head Coach Sandy Montgomery believes her team's success comes down to mental toughness.

"I'm really happy how the team is battling late in innings," Montgomery said. "We have had some real gut checks, and I like the way our team has responded."

On Friday, the Cougars split a doubleheader with Eastern Kentucky (17-10 overall, 4-1 OVC) in Richmond, Ky., winning the first game 4-1 before losing 11-3 later that day.

In the first game, the Cougars used a combination of freshman Haley Chambers' excellent pitching and some timely hitting to overcome the Colonels. The Cougars got on

Morehead State (10-10 overall 0-4 OVC) in a doubleheader. The Cougars swept the twin bill, winning 9-4 and 5-2.

In game one, Chambers extending her winning streak to seven games. She is 10-2 on the season.

The Cougars found themselves down early after Morehead State's three-run first inning. The Cougars claimed the lead in the fifth on junior catcher Rachel Coonrod's first home run of the season. The two run homer gave the Cougars a 5-4 lead.

The Cougars added to their lead in the sixth with four more runs. McDavid hit her team-leading fifth home run of the season in the sixth inning and the Cougars went on to win 9-4. McDavid leads the team with five home runs.

Montgomery said that McDavid is a matchup problem for any team.

"She is a really strong kid and a hitter," Montgomery said. "She has really settled in this year. Teams have not really found an

### MADNESS | from pg. 8

Coast University, it is a school in its second year of eligibility and a 15-seed, and it's in the Sweet Sixteen.

How ignorant or foolhardy do you have to be to pick a team like the Eagles to win just one game?

A 15-seed had never made it this far before. While it's exciting to watch it happen, it's frustrating from a bracketologist's standpoint.

We all think we know something about college basketball. We may admit to being less than experts, if there is such a thing, but we watch the games and follow our teams. We feel like we pick up a little knowledge here and there throughout the course of the season.

Then March Madness comes along and laughs in our faces like a grade-school bully. It takes what we think we know about basketball and sports in general and throws it back in our faces.

That's the most surprising thing about this whole tournament, that we can still be honestly surprised every year.

And you know what? I have no problem with that, especially when the games have been as exciting and, well, unpredictable as they have been so far this year.

Who could have guessed a small school from Florida could enthrall the nation like this? They're such a perfect team with a perfect story, too.

Is it not enough that they're making history as a 15-seed? Do they really need to layer on the sentimentality by being in their second year of eligibility, not to mention the fact that it is a university that had classes for the first time in 1997?

Imagine if, instead of FGCU, it was North Carolina or Kentucky beating higher ranked teams or any other team with tradition and a history of success in the tournament.

Imagine if those players

were smiling, laughing and jumping around on the court before the game was over. "Who do these guys think they are?" people would ask. "Don't they know they're supposed to act like they've been there before?"

People would give them hell for it, but FGCU gets a pass because they're not supposed to be in the Sweet Sixteen. How can anyone expect them to act like they've been there before when they're hardly familiar with their own arena, which was built in 2002?

I guess it all makes sense. The fans are as fickle as the March Madness itself. And I wouldn't want it any other way.

John Layton can be reached at [jlayton@alestlelive.com](mailto:jlayton@alestlelive.com) or 650-3524. Follow John @johnmlayton.

“ Teams have really not found an answer for her. I wouldn't want to pitch to her...”

Sandy Montgomery  
*Head Coach*

the scoreboard when senior catcher Samantha Stanicek hit her third home run of the season in the fifth inning. Stanicek's homer drove junior first basemen Kayla Riggs and sophomore right fielder Brittany Toney home to give SIUE a 3-0 lead.

Sophomore third basemen Alex McDavid added a homer in the sixth. Chambers allowed only two hits during the game.

According to Stanicek, Chambers has matured during her freshman season.

"Haley has grown so much this year, both in her pitching and in her confidence," Stanicek said. "When she is on the mound, she is dominant."

In the second game, the Cougars never got any offensive traction as they fell 11-3 to the Colonels. McDavid said they were not as focused as they needed to be.

"I think that we pulled back a little," McDavid said. "We assumed that we would just get the job done instead of taking it one inning at a time."

On Saturday, the Cougars traveled to Morehead, Ky., to take

answer for her. They might get her out the first time but not the second. I wouldn't want to pitch to her."

Game two was a much closer game. The Cougars did not score until the seventh inning, already down 2-0. McDavid hit an RBI single that drove sophomore infielder Rebecca Gray and senior second baseman Taylor Tooley home to tie the game.

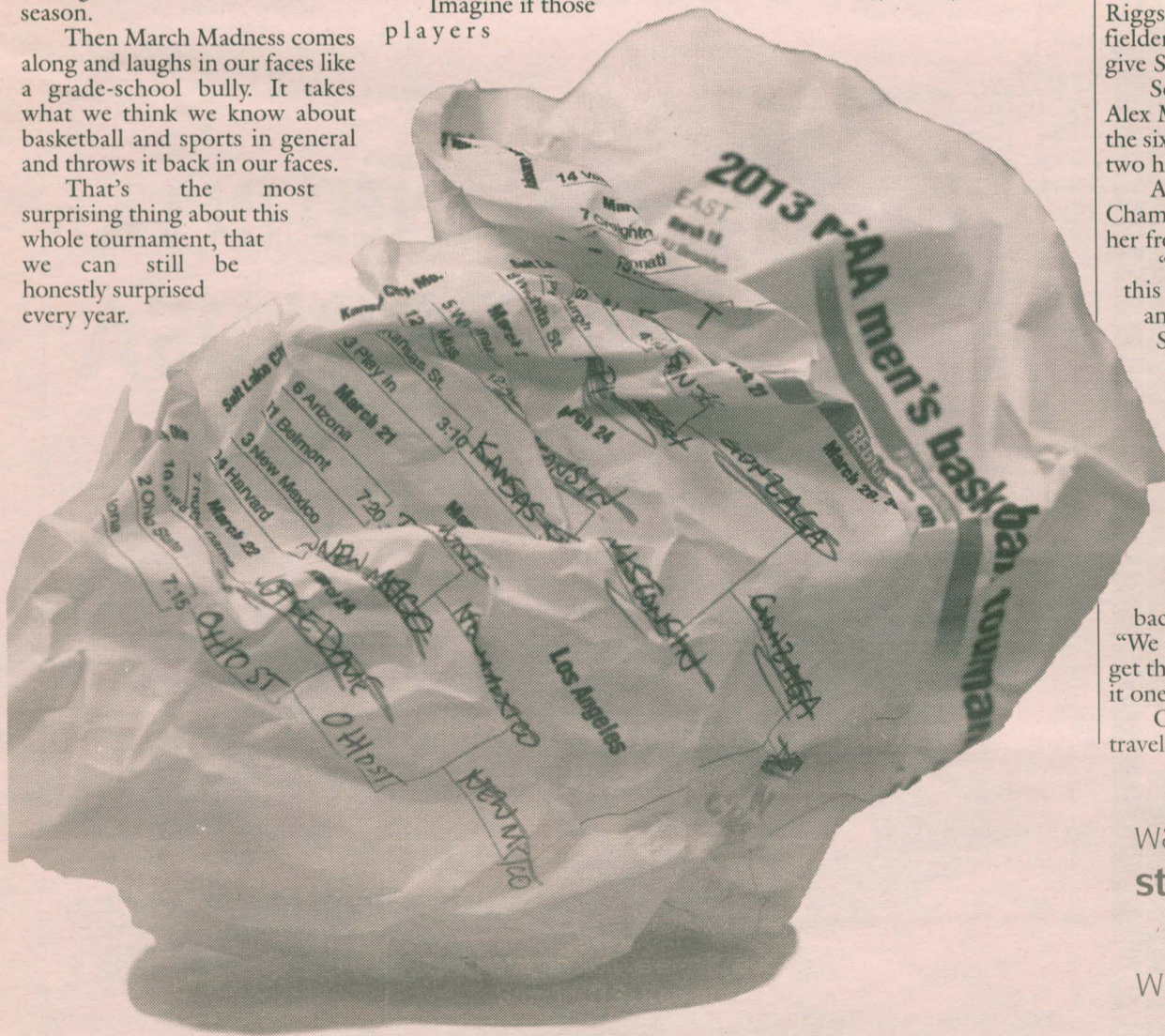
The Cougars added three runs in the eighth to put the game away. Tooley had an RBI single and later scored along with freshman outfielder Jordan LaFave on an infield error. Junior pitcher Erin Greenwalt improved to 6-3 on the season.

McDavid said the team does not panic playing from behind.

"The second game was a battle," McDavid said. "We didn't press. We just finally trusted our bats and got some hits."

Up next for the Cougars is a 1 p.m. doubleheader Friday against Southeast Missouri in Cape Girardeau, Mo.

Gabriel Simpson can be reached at [gsimpson@alestlelive.com](mailto:gsimpson@alestlelive.com) or 650-3524. Follow Gabriel @LegendaryGSimp.



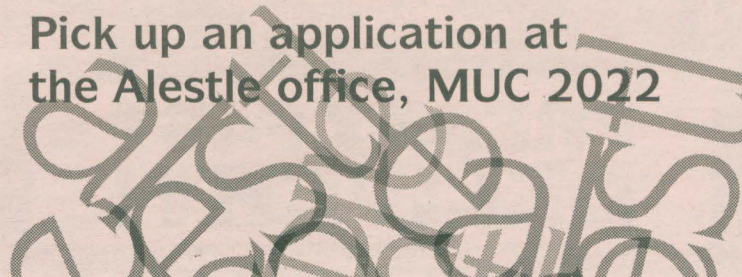
| Photo illustration by Michelle Beard/ Alestle

want to write for an **award-winning student newspaper?**

we're looking for you.

Pick up an application at the Alestle office, MUC 2022

Scan here to follow the Alestle NCAA tournament bloggers or visit [alestlelive.com/marchmadness](http://alestlelive.com/marchmadness)



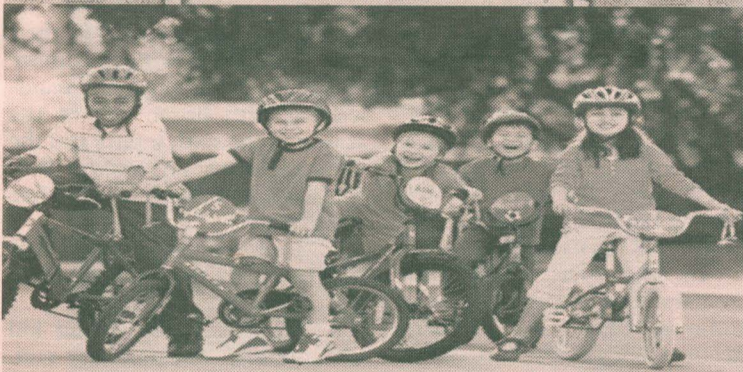


Quality Health Care  
for SIUE students and their families  
NOW ACCEPTING CLIENTS & MOST COMMERCIAL INSURANCE PLANS

**Dr. Laura Bird, M.D., L.L.C.**  
Family Medicine

2704 N. Center, Maryville, IL 62062  
(618) 288-0656 • (618) 288-0736 Fax

**COUGAR KIDS SATURDAY:  
BICYCLE BASH!**



SATURDAY, APRIL 13, 2013  
10:00 A.M.  
VADALABENE CENTER  
PARKING LOT

BICYCLING IS A GREAT WAY TO GET AROUND TOWN.  
HEAR A PRESENTATION ABOUT THE PROPER WAY TO  
WEAR YOUR HELMET AND OTHER IMPORTANT RULES TO RIDING.  
BRING YOUR BIKE BECAUSE THIS IS ALL HANDS ON FUN.  
ENJOY AN OBSTACLE COURSE, AND ALL PARTICIPANTS  
WILL RECEIVE A FREE BIKE HELMET!

WWW.SIUE.EDU/CAB/



**TRACK** | from pg. 8

trailed Southeast Missouri runner Rebekah Lawson for the majority of the race but was able to overtake her on the last lap.

SIUE was also able to score wins in men's and women's hurdles. Sophomore hurdler Jatavia Wright won the women's 100-meter hurdles with a time of 14.34, beating the rest of the field by nearly a full second. In the 110-meter hurdles, juniors Forrest Knight and Josh Thomas took first and second, with Knight getting the win with a time of 14.93.

Even with the win, Knight said he knows he can improve his time and both the 110- and 400-meter hurdles.

"I felt a little off in the hurdles. Overall, it was a good meet, but I am still wanting to work some things out in the 110s and the 400 [hurdles]," Knight said.

In the final event of the day, the 4x400-meter relay, the women were able to gain a victory with a time of 4:04.59. The men's race had the fans on their feet as Southeast Missouri and SIUE battled it out for the entire race. In the end, Southeast Missouri edged out SIUE by only three-tenths of a second.

With the team able to set some personal bests, some of which led to new school records, Thomas said the team was able to make a statement with their performance.

"This was our first outdoor meet, and we have people out here breaking school records. That should let the rest of the conference know we are ready to compete," Thomas said.

*Evan Meyers can be reached at emeyers@alestlelive.com or 650-3525. Follow Evan @ronninix.*

# Cougars' news in brief

**ALESTLE STAFF**

**Chambers and McDavid honored by OVC**

The Ohio Valley Conference honored sophomore third baseman Alex McDavid and freshman pitcher Haley Chambers after the softball team's 5-1 week.

McDavid shared Player of the Week honors with Murray State freshman Alexa Becker. Chambers won her second OVC Pitcher of the Week honors.

McDavid homered in three straight games this week and took over SIUE's team lead in home runs with five. She recorded 17 total bases for the week for a .944 slugging percentage. She also led the team with a .476 on-base percentage.

Chambers improved her winning streak to seven games this week with wins against Georgia Tech, Eastern Kentucky and Morehead State. The freshman left-hander holds a 10-2 record overall.

Chambers struck out 20 batters and walked one in 21 innings of work. Opponents hit .158 off Chambers.

**Evans, Noon and Hampl named track and field athletes of the week**

The Ohio Valley Conference honored three SIUE track and field athletes this week.

Sophomore Ahmad Evans, senior Aftan Noon and sophomore Elizabeth Hampl received OVC Athlete of the Week accolades.

The trio garnered five first-place finishes at the Cougar Classic

on Saturday.

Evans finished first in the 200-meter and broke his own school record with a time of 21.17 seconds. He now ranks 10th nationally, sixth regionally and first in the OVC in the 200. He also took second in the 100-meter with a time of 10.56.

Noon took first place in both the 1,500-meter (4:35.66) and the 3,000-meter (10:13.72). She ranks in the top 60 regionally in the 1,500 and currently holds the top time in the OVC.

Hampl set a new school record in the hammer throw with a mark of 184 feet, 10 inches. She broke the previous school record of 181-4 st by Carrie Glover in 2006. Hampl ranks 35th nationally, 26th regionally and first in the OVC in the hammer. She also placed first in the javelin during the weekend (111-8).

**Ilcewicz named Prairie Farms Student-Athlete of the Week**

Sophomore women's tennis player Haley Ilcewicz, a pharmacy major with a 3.93 GPA, is this week's Prairie Farms Student-Athlete of the Week.

Ilcewicz was named to the Ohio Valley Conference Commissioner's Honor Roll for the 2011-12 school year.

Ilcewicz won three of four conference singles matches and has teamed up with freshman Monique Krutak to go 8-1 as a doubles pair.

*Alestle Sports can be reached at sports@alestlelive.com or 650-3524. Follow @TheAlestleSport.*

**FREAKY FAST DELIVERY!**



**ORDER ONLINE**  
@JIMMYJOHNS.COM

**FREAKY FAST DELIVERY!**

© 2011 JIMMY JOHN'S FRANCHISE, LLC ALL RIGHTS RESERVED.



**DESIGNED IN LA  
MADE IN USA**

**American Made Product  
Available Now At Glik's**

**GLIK'S**

Visit [www.gliks.com](http://www.gliks.com) to find your nearest location



# Athletics Calendar



## March

## April

Thur 28	Fri 29	Sat 30	Sun 31	Mon 1	Tue 2	Wed 3
Baseball at Tennessee Tech 6 p.m.	Men's and Women's Track & Field vs. Spring Classic Invite at SIU Carbondale 3 p.m.	Men's and Women's Track & Field vs. Spring Classic Invite at SIU Carbondale 9 a.m.	Women's Golf at IPFW Spring Fling All Day	Women's Golf at IPFW Spring Fling All Day	Men's Golf at Arkansas State Red Wolves Intercollegiate All Day	Women's Tennis vs. Eastern Illinois 2 p.m.
	Softball at Southeast Missouri 1 p.m.	Women's Tennis at Belmont 10 a.m.		Men's Golf at Arkansas State Red Wolves Intercollegiate All Day	Softball at SIU Carbondale 4 p.m.	Men's Tennis vs. Eastern Illinois 2 p.m.
	Women's Tennis at Tennessee State 2 p.m.	Men's Tennis at Belmont 10 a.m.			Baseball vs. Saint Louis 6 p.m.	
	Men's Tennis at Tennessee State 2 p.m.	Softball at Southeast Missouri 1 p.m.				
	Softball at Southeast Missouri 3 p.m.	Baseball at Tennessee Tech 2 p.m.				
	Baseball at Tennessee Tech 6 p.m.					

Baseball			Softball		
<b>East</b>			<b>East</b>		
Tenn. Tech	14-6.	(5-1)	E. Kentucky	18-11	(5-2)
Belmont	14-6	(2-1)	Jax State	18-14	(4-3)
Austin Peay	17-3	(2-0)	Tenn. St.	10-20	(1-5)
Murray State	10-11	(4-2)	Belmont	10-15	(1-6)
Jax State	11-11	(5-1)	Tenn. Tech	11-13	(0-2)
SE Missouri	11-11	(3-3)	Morehead	10-10	(0-4)
Morehead St.	7-13	(2-4)	<b>West</b>		
<b>SIUE</b>	<b>5-11</b>	<b>(3-3)</b>	E. Illinois	16-9	(6-1)
E. Kentucky	5-11	(2-4)	Murray St.	11-14	(5-1)
UT Martin	7-13	(1-5)	<b>SIUE</b>	<b>19-8</b>	<b>(4-2)</b>
E. Illinois	4-14	(0-5)	UT Martin	20-9	(3-2)
			SE Missouri	10-15	(3-2)
			Austin Peay	10-11	(1-4)

### March 20 Results

Morehead St. 2, Clemson 5  
Berea (Ky.) 4, Tennessee Tech 9  
Evansville 3, UT Martin 8  
E. Kentucky 6, SE Missouri 8  
Jax St. 5, Alabama 6

### March 22 Results

Jax. State 4, Austin Peay 5  
Belmont 14, E. Kentucky 1  
SE Missouri 2, Morehead St. 4  
E. Illinois 9, Illinois State 5  
Jax St. 1, Austin Peay 10  
**Murray State 1, SIUE 0**  
Tenn. Tech 3, UT Martin 1

### March 23 Results

Belmont 1, E. Kentucky 0  
SE Missouri 10, Morehead St. 5  
**Murray State 12, SIUE 13**  
Jax St. 19, Austin Peay 9  
E. Illinois 7, Illinois St. 2  
Belmont 13, E. Kentucky 6  
SE Missouri 8, Morehead St. 11  
**Murray State 8, SIUE 1**  
E. Illinois 3, Illinois St. 18  
Tenn. Tech 13, UT Martin 8

### March 24 Results

Tenn. Tech 8, UT Martin 5

### March 26 Results

West Virginia 16, E. Kentucky 9  
Maryville College 0, Tenn. Tech 1  
Austin Peay 5, Mississippi State 13

### March 20 Results

Shawnee St. 0, Morehead St. 2  
Shawnee St. 0, Morehead St. 6  
Belmont 6, Alabama A&M 1  
Belmont 10, Alabama A&M 4  
Murray State 3, Chattanooga 5  
Georgia Tech 9, SE Missouri 4  
Tenn. Tech 3, Lipscomb 6  
Tenn. Tech 5, Lipscomb 6  
Trevecca 1, UT Martin 6

### March 21 Results

SE Missouri 3, W. Kentucky 10

### March 22 Results

E. Illinois 3, Morehead St. 0  
E. Illinois 3, Morehead St. 1  
**SIUE 4, E. Kentucky 1**  
**SIUE 3, E. Kentucky 11**  
Murray State 3, Tenn. Tech 2  
Murray State 2, Tenn. Tech 0

### March 23 Results

SE Missouri 11, Belmont 12  
SE Missouri 3, Belmont 1  
**SIUE 9, Morehead St. 4**  
**SIUE 5, Morehead St. 2**  
E. Illinois 3, E. Kentucky 5  
E. Illinois 3, E. Kentucky 2  
Austin Peay 0, Jax St. 6  
Austin Peay 2, Jax St. 4  
UT Martin 2, Tenn. St. 4  
UT Martin 13, Tenn. St. 0

More sports online @ alestlelive.com

Edwardsville's Only Pro Music Shop



Guitars • Drums • Band & Orchestra Instruments • PA & Sound Equipment • Sheet Music  
SALES • RENTALS • LESSONS • REPAIRS

142 N. Main Street • Edwardsville, Illinois 62025 • 618.655.1600

www.mojosmusic.com

# Sundazzlers



## Spring Break Special

1 Month Unlimited \$18.88

SEE STORE FOR DETAILS



SIUE's Place To Tan

Discounts available on Upgrade Packages!

First Tan is Always Free!

Call 656-UTAN (8826)

6455 Center Grove Rd • www.sundazzlers.net • Edwardsville, IL 62025

# CAMPUS RECREATION

## EASTER SUNDAY HOURS

Student Fitness Center  
Open Sunday, March 31  
3:00pm-10:00pm

## LIFEGUARDS WANTED

Indoor & Outdoor Pool  
Needs Lifeguards this Summer  
Apply at [siue.edu/studentemployment](http://siue.edu/studentemployment)

## INDOOR IRONMAN

Run 26.2 miles - Swim 2 miles - Bike 112 miles  
FREE to compete March 25 - April 25  
As 3-person team or individual competitor  
Register Now at SFC Reception Desk

## PERSONAL TRAINERS WANTED FOR HIRE!

### Certification Required

Those interested without certification, please ask about possible opportunities

See SFC Reception Desk or  
Janelle Gosa ([jgosa@siue.edu](mailto:jgosa@siue.edu)) 618-650-5611

## INTRAMURALS

T-Shirt Design Contest Ends 4/1  
Design '13-'14 Intramural Champions T-shirt  
Submit to Intramural Sports office or send email to [TDOUGHE@SIUE.EDU](mailto:TDOUGHE@SIUE.EDU)

### Upcoming Tournaments

Disc Golf April 12  
Ultimate Frisbee April 21  
Dodgeball April 26



## FREE BELAY CLASS

Sunday, April 14 6:00pm  
SFC Climbing Gym

## GROUP FITNESS

Over 40 Hours of Classes/Week!

★ EveryBODY Yoga  
\$15 (Students) &  
\$25 (Members) for Full Semester of Classes on Monday, Wednesday, Friday, & Saturday

Pick Up a Schedule at Student Fitness Center Reception Desk or Online! [siue.edu/crec/wellness](http://siue.edu/crec/wellness)



Stay Connected  
@siuecampusrec



SIUE.EDU/CREC

DESIGNED FOR LIFE



## ALESTLE CLASSIFIEDS GIVE YOU MORE!

Place your classified ad at a time convenient for you using our easy, secure online interface at [alestlelive.com/classifieds](http://alestlelive.com/classifieds)

**Deadlines:**  
By noon Tuesday for Thursday issue  
Having trouble? Call 618-650-3528 or e-mail [classifieds@alestlelive.com](mailto:classifieds@alestlelive.com)

**Alestle Office Hours:**  
**MUC 2022**  
8 a.m. - 4:30 p.m. Monday-Friday

### HELP WANTED

Earn \$1,000-\$3,200 a month to drive our brand new cars with ads.  
[www.EarnDrive.com](http://www.EarnDrive.com)

Residential Cleaning Agents  
Inquire to [Sunnysurface@yahoo.com](mailto:Sunnysurface@yahoo.com)

Position Available: Financial Assistant for Metro East Law Firm. Must understand and be familiar with basic accounting principles. Proficiency with Microsoft Office required. This position will work closely with office staff, providing financial information and support required for operation of the firm. This position will also manage accounts with proprietary software and provide reports to outside auditor. Salary commensurate with experience. Start date flexible. Spring 2013 graduates or Bachelor's Degree required. Reply with resume and transcript reflecting coursework and grades to:  
[bookkeeperposition@hotmail.com](mailto:bookkeeperposition@hotmail.com)

### FOR RENT

3BR/1.5 bath 5 mins from campus. Furnished w/leather couch, matching loveseat, washer/dryer, pool table & dining room set. \$1,150 per month. Available June 1.  
[carley80@hotmail.com](mailto:carley80@hotmail.com)

2BR, 1.5BA on SPECIAL starting at \$725/month! W/D hook-up, microwave, dishwasher, oven/range, refrigerator/freezer. Select homes include free basic cable. Pet-friendly and garage options available.

Pre-lease NOW for Summer/Fall 2013 and lock-in your rent at \$725/month!

Cherry Hills Properties  
2 South Cherry Hills  
Edwardsville, IL 62025  
(618) 692-9310  
[cherryhillsleasing@millsproperties.net](mailto:cherryhillsleasing@millsproperties.net)

Taking applications for three bedroom units; (1) efficiency and (2) one-bedroom units. These apartments are located in quiet residential neighborhood, with off-street parking, close to SIUE. Landlord provides water, sewer and trash pickup.

The efficiency is located in the rear and has a porch entrance. A stove/refrigerator and window air conditioner is provided.

One-bedrooms have stove/refrigerator and central air.

Call 618.530.6939 or 618.466.8296  
Email [cas85bas@gmail.com](mailto:cas85bas@gmail.com)

3 bed, 2 bath CONDO. 5 minutes from SIUE campus at 46 S. Cherry Hills; available June 1. Furnished except bdrms, eat-in kitchen with dishwasher, stove, oven and refrigerator, W/D included, side deck, walkout basement with large yard, one-car garage. \$1,200 a month.

Call Rick at 618-402-6533 for more info

4 bdrm, 2 bath single-family home available June 1st. Minutes from SIUE campus in Glen Carbon. 1,600 sq. ft.; all hardwood floors and ceramic tile. WshR/Dryr and lawn care included. 1-car garage and off-street parking. Many recent updates, must see @ \$1,300/mo.

[matthewbriandavis@gmail.com](mailto:matthewbriandavis@gmail.com)

## Los Angeles Times Daily Crossword Puzzle

Edited by Rich Norris and Joyce Lewis

- ACROSS**
- "Now I understand"
  - Congressional proceedings ailer
  - Much-studied flavor enhancer
  - Wilt
  - Flooding
  - Pint filler
  - Deal with, as a stack of dull paperwork
  - Poker prominence
  - One may be rolled up
  - Galsworthy's "The Forsyte \_\_\_"
  - One of a chair pair
  - Investor's initial support
  - Very disagreeable
  - Singer Björk's birthplace
  - Cosby's "I Spy" co-star
  - Tour de France stage
  - Create an incriminating trail
  - Bring up
  - Simple beds
  - Montana neighbor
  - Defining quality
  - How long to shop, on a spree?
  - AM frequency meas.
  - Bidding site
  - Screwball behavior
  - Kitty's love in "Exodus"
  - Autumn lunar phenomenon
  - Checker on a board, say
  - French clerics
  - Duck
  - Tallahassee-to-Tampa dir.
  - Bank job
  - Flighty

- DOWN**
- National econ. yardstick
  - Fla. NBA team
  - Like overly tight clothing
  - Cry of pain
  - H.S. exam for college credit
  - "Wayne's World" co-star
  - Did a smith's work
  - More, musically
  - Filmmaker Lee
  - Math degree
  - "Hakuna \_\_\_": "The Lion King" song
  - Maxwell House's "Good to the last drop," e.g.

1	2	3	4	5	6	7	8	9	10	11	12	13	
14						15					16		
17					18						19		
		20								21			
22	23			24				25	26	27			
28			29					30					
31								32					
	33			34	35	36					37	38	
					39					40		41	
42	43	44						45	46	47			
48								49			50		
51								52			53		
54					55	56	57					58	59
60					61					62			
63					64						65		

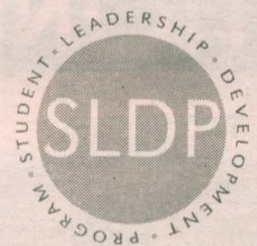
By Jean O'Connor

- Spiro's successor
- Obedience school command
- "Shh!"
- Preschool song opener
- Enlist again
- Bank lead-in
- Military sch.
- Animated Le Pew
- In an economical manner
- Celebration before the celebration?
- Not (a one)
- Jackson 5 brother
- Rebekah's eldest
- Goes kaput
- Make an engraving
- "\_\_\_ who?"
- First-stringers
- Some October babies
- He replaced Ken as Barbie's beau from 2004 to 2006
- Actor Borgnine
- They're often stewed
- Was nasty to

### Last week's puzzle solved

R	A	M	R	O	D	S		S	O	B		O	R	B			
I	R	O	N	O	R	E		T	W	A		L	O	O			
M	U	G	S	H	O	T		R	E	S	I	D	U	E			
E	S	L		P	O	L		P	O	L	E	S	I	T	E		
				S	L	A	T		N	E	T		S	C	I		
						P	O	L		A	C	S		H	M	O	S
C	L	I	P	P	E	R	S	H	I	P		E	R	E			
H	I	T	T	I	T	A		E	M	I	G	R	E	E			
U	N	I		C	H	A	I	R		P	E	R	S	O	N		
G	A	N	G		E	L	S		S	T	E						
					E	A	R		I	T	T		A	G	R	A	
B	A	R	B	E	R	S	H	O	P				O	R	S		
I	N	A	S	P	O	T			Q	U	A	R	T	E			
S	T	Y		S	E	C			E	Y	E	B	R	O	W		

- Barry and Brubeck
- Mid 10th-century year
- "A likely story!"
- 16th prez
- Slugger's stat
- Gorges oneself (on)
- Napoleonic marshal



## MODULES

Student Leadership Development Program & Volunteer Services

### Modules

**Civic Responsibility — 2 p.m., April 2**  
MUC International Room  
Sarah Laux  
Assistant Director - Civic Engagement, Kimmel Leadership Center

**Ethical Leadership — 2 p.m., April 3**  
MUC International Room  
Kyle Rice  
Assistant Director - Civic Engagement, Kimmel Leadership Center

**Leading Your Peers — 6 p.m., April 3**  
MUC International Room

### SLDP Reminders... Volunteer Projects

- |                                     |   |
|-------------------------------------|---|
| April 4 & 5 -<br>The Gardens @ SIUE | April 13 - CERT                           |
| April 6 - CERT                      | April 18, 19 & 20 -<br>The Gardens @ SIUE |
| April 13 -<br>St. Vincent de Paul   | April 20 -<br>Eagle's Nest                |
| April 13 -<br>The Gardens @ SIUE    | April 26 -<br>The Gardens @ SIUE          |

For more information and the calendar, contact:  
Kimmel Leadership Center at ext. 2686  
or visit the website [www.siu.edu/kimmel](http://www.siu.edu/kimmel)

Check out the site for YOUNG ADULTS

[www.scu.onyourway.com](http://www.scu.onyourway.com)

On Your Way  
Get there.

Enter to win valuable monthly prizes like a laptop, Wii, HDTV and more!

It's all FREE... no catches!  
(seriously)

**New Account Special!**  
Open a Savings and Checking Account  
& get \$50\* when you sign up for debit card

\*If savings account is closed within 365 days, initial deposit remains at Scott Credit Union. Must open savings, checking, and debit card to qualify. Offer expires 12/31/12. ALEST12



Visit [www.scu.org](http://www.scu.org) for a list of branch locations.

