



Back to



School



Survival



Guide



Greek Life



Financial Aid



Campus Map



St. Louis



Nightlife



Gardens



Dining Services



Sports



SSC



Fitness



Parking



Calendar



[alestlelive.com](http://alestlelive.com)



[@thealestle](https://twitter.com/thealestle)



[alestlelive](https://www.facebook.com/alestlelive)



[alestlegroup](https://www.youtube.com/alestlegroup)

# table of contents

4-5	<b>Welcome back</b> Administration welcome freshmen to SIUE			<b>Greek life</b> What to look for in joining a fraternity or sorority	6
7	<b>What you missed</b> The Alestle's top stories from summer			<b>Cougar shuttle</b> How to get around on and off campus	8
9	<b>Parking services</b> Where to park and how to avoid tickets			<b>Out and about</b> Where to go for a night on the town and hidden gems for shopping and eating in the area	10
11	<b>Tips for success and procrastination</b> How to succeed at the college level, while taking time for some app relaxation			<b>Academic Achievement Center</b> Campus resources for test preparation, writing help and more	12
13	<b>Jobline, Police</b> SIUE's job resource and campus police			<b>Campus Construction</b> Building renovations and construction	14
15	<b>Gardens</b> Students are encouraged to stray off the path at SIUE Gardens			<b>Cougar Card</b> Discounts around town for being an SIUE student	20
21	<b>Dining Services</b> What's new with campus food			<b>St. Louis</b> Attractions on the other side of the river	22
24	<b>Red Storm</b> SIUE's fan section looks to the future			<b>Men's Soccer season preview</b> Conference runners-up return in second year of D-I eligibility	25
26	<b>Women's soccer season preview</b> Strong recruiting class joins youthful squad			<b>Volleyball season preview</b> Cougars hope change brings continued momentum	28
29	<b>Men's basketball season preview</b> Cougars look to bounce back with a healthy Yelovich			<b>Women's basketball, wrestling season previews</b> Cougars work to find extra edge over the summer; Tough schedule ahead for Cougars	30
31	<b>Softball season preview</b> Softball prepares for OVC again, hoping for more			<b>Baseball season preview</b> Collins looks past 1,000, Cougars have revamped pitching staff	32
33	<b>Fitness Center</b> Staying active and health while attending classes			<b>Campus Map</b> Know where to go and which building is which.	35

The **Alestle**  
Alton - East St. Louis - Edwardsville

**Kari Williams**  
Editor in Chief  
**AJ Sanson**  
Managing Editor  
**Ashley Seering**  
A&E Editor  
**Lexi Cortes**  
Graphics Manager  
**Opinion Editor**  
**Allan Lewis**  
Sports Editor  
**Courtney Hill**  
**Jason Frazier**  
**John Layton**  
Reporters  
**Michelle Beard**  
Photo Editor  
**Rebhka Blake**

**Derrick Hawkins**  
Photographers  
**Liz Spilman**  
Chief Copy Editor  
**Jeff Mason**  
**Mat Camp**  
**Aren Dow**  
Copy Editors  
**Jill Cook**  
Graduate Asst. Writing Coach  
**Clay Awsumb**  
Graphics Manager  
**Bo Bosico**  
Graduate Assistant  
**Debbie Roberts**  
Office Manager  
**Brittany Thomas**  
Managing Secretary  
**Kia-Dre Bird**  
Office Secretary  
**Tammy Merrett-Murry**  
Alestle Director

**Letters to the Editor Policy:**  
The editors, staff and publishers of the Alestle believe in the free exchange of ideas, concerns and opinions and will publish as many letters as possible.  
Letters may be submitted at the Alestle office located in the Morris University Center, Room 2022 or via e-mail at [opinion@alestlelive.com](mailto:opinion@alestlelive.com).  
All hard copy letters should be typed and double-spaced. Letters should be no longer than 500 words.  
Please include phone number, signature, class rank and major. We reserve the right to edit letters for grammar and content.  
However, care will be taken to ensure that the letter's message is not lost or altered.  
Letters to the editor will not be

printed anonymously except under extreme circumstances.  
We reserve the right to reject letters.  
**About the Alestle:**  
One copy of the Alestle is free. Additional copies cost \$1 each. The Alestle is a member of the Illinois College Press Association, the Associated Collegiate Press, Student Press Law Center, College Newspaper, Business & Advertising Managers and U-WIRE.  
The name Alestle is an acronym derived from the names of the three campus locations of Southern Illinois University Edwardsville: Alton, East St. Louis and Edwardsville.  
The Alestle is published on Thursdays in print and on Tuesdays

online during the fall and spring semesters. A print edition is available Wednesdays during summer semesters. For more information, call 650-3528.

**Have a comment?**  
**Let us know!**  
Send us an e-mail:  
[opinion@alestlelive.com](mailto:opinion@alestlelive.com)  
The Alestle  
Campus Box 1167  
Edwardsville, Ill. 62026-1167



# SIUE

SOUTHERN ILLINOIS UNIVERSITY  
EDWARDSVILLE

## 2011 Cougar Welcome

Welcome to the start of fall semester at SIUE ... join us for these events when you are not attending classes!

### Schedule of Events

#### Friday, August 19, 2011

**Prairie & Woodland Halls Check-In**  
8 AM – 3:30 PM  
Goshen Lounge, Morris University Center

**Bluff Hall Check-In**  
8 AM – 3:30 PM  
Multi-function Room, Evergreen Hall

**Residence Hall Community Meetings**  
4:30 PM  
All residents should attend their first community meeting of the year regarding living on campus and meet other people living in your community.  
Prairie, Woodland, & Bluff Halls

**Freshmen First Night**  
5:30 PM  
(Meal card or cash)  
Meridian Ballroom, Morris University Center

#### Saturday, August 20, 2011

Regular dining hours are in effect.

**Cougar Village Check-In**  
8 AM – 5 PM  
Commons Building, Cougar Village

**Evergreen Hall Check-In**  
8 AM – 5 PM  
Multi-function Room, Evergreen Hall

**New Freshman Welcome**  
9:15 AM  
Freshmen are invited to attend the official welcome. Check in begins at 8:40 AM.  
Vadalabene Center

**Class Photo**  
10:15 AM  
Cougar Statue, weather permitting

**New Freshman Welcome Academic Breakout Sessions**  
11 AM – 12 PM  
Various Locations

**Playfair**  
7 PM – 8:30 PM  
Join us for the "ultimate icebreaker"! This interactive evening is sure to help you meet other SIUE students and have a great time showing your school spirit!  
Meridian Ballroom, Morris University Center

**Christopher Carter, Hypnotist**  
8:30 PM – 10 PM  
Come see Christopher Carter hypnotize the audience. Free to everyone.  
Meridian Ballroom, Morris University Center  
Interfraternity Council

#### Sunday, August 21, 2011

**Catholic Mass**  
10:30 AM - 11:30 AM  
Catholic mass followed by refreshments and hospitality! Come on down and pray with, and meet, a friendly and welcoming community. All faiths and denominations are welcome!  
The "Dome" at The Center for Spirituality & Sustainability (across from the Engineering Building)  
Catholic Newman Student Union (CNSU)—Catholics Alive!

**Tour of Classrooms**  
3 PM  
Bring your class schedule and take a tour to find your classrooms before classes begin.  
Meet in the Goshen Lounge,  
Morris University Center

**Back-2-School BBQ**  
5 PM – 12 Midnight  
Come join the distinguished gentlemen of Alpha Phi Alpha Fraternity, Inc., Iota Pi Chapter for their annual Back-2-School Barbecue. Free food and lots of fun. Come start the year off right.  
Stratton Quadrangle  
Alpha Phi Alpha Fraternity

**Evergreen Hall and Cougar Village Community Meetings**  
5 PM – 6 PM  
See RA for Location

**Evergreen Hall and Cougar Village Welcome Event**  
6 PM  
See RA for Location

#### Monday, August 22, 2011

**Group Fitness Demo**  
11 AM – 1 PM  
Put on your athletic gear and come sample SIUE's new fall group fitness classes in the MUC Goshen Lounge! Demos will include: Zumba, Bootcamp, BOSU, Abs, TurboKick, Step, Salsa, Pilates, and MORE!  
Goshen Lounge, Morris University Center

**Global Prints Poster Sale**  
8 AM – 5 PM  
Outside north entrance of Morris University Center (inclement weather, inside Morris University Center)  
Campus Activities Board

**Resource Fair/Departmental Booths**  
10 AM – 2 PM  
Check out what our University Departments have to offer.  
Goshen Lounge, Morris University Center

**Evening Student Reception**  
4:30 PM – 6:30 PM  
Stop by to enjoy refreshments before class, receive information and giveaways, and experience a welcoming atmosphere for evening students.  
First Floor Lobby, Peck Hall  
Registrar's Office

**Free Pasta Dinner!**  
5:30 PM – 6:30 PM  
Catholics Alive, a Newman organization (CNSU), invites you to a FREE pasta dinner---pasta, bread, salad, soft drinks and dessert--while supplies last! Come early since this is usually a 'sell out' crowd and only one 'sitting'. Meet student leaders who have planned many spiritual, social justice and social activities for the year. Find out how to be part of this energetic and fun-loving Recognized Student Organization.  
The "Dome" at The Center for Spirituality & Sustainability (across from the Engineering Building)  
Catholic Newman Student Union (CNSU)—Catholics Alive!

#### Tuesday, August 23, 2011

**Group Fitness Demo**  
11 AM – 1 PM  
(See Monday, August 22, 2011)  
Goshen Lounge, Morris University Center

**Global Prints Poster Sale**  
8 AM – 5 PM  
Outside north entrance of Morris University Center (inclement weather, inside Morris University Center)  
Campus Activities Board

**Resource Fair/Departmental Booths**  
10 AM – 2 PM  
(See Monday, August 22, 2011)  
Goshen Lounge, Morris University Center

**Evening Student Reception**  
5 PM – 7 PM  
Stop by to enjoy refreshments before class, receive information and giveaways, and experience a welcoming atmosphere for evening students.  
First Floor Lobby, Founders Hall  
Registrar's Office

#### Wednesday, August 24, 2011

**Global Prints Poster Sale**  
8 AM – 5 PM  
Outside north entrance of Morris University Center (inclement weather, inside Morris University Center).  
Campus Activities Board

**Merchants' Fair**  
10 AM – 3 PM  
Fun, entertainment, giveaways, and prize drawings! Take a break between classes and

stop by to see what area merchants have to offer!  
Goshen Lounge, Morris University Center

**Free Kettle Corn!**  
10 AM – 2 PM  
Stop by to enjoy a complimentary bag of freshly popped Kettle Korn while supplies last.  
Outside front entrance of Lovejoy Library  
Library and Information Services

**Ice Cream Social**  
12 Noon  
Meet Chancellor Vaughn Vandegrift and Edwardsville Mayor Gary Niebur while enjoying a complimentary six-ounce Dairy Queen® Blizzard®! (While supplies last!)  
Goshen Lounge, Morris University Center

**Evening Student Reception**  
4:30 PM – 6:30 PM  
Stop by to enjoy refreshments before class, receive information and giveaways, and experience a welcoming atmosphere for evening students.  
First Floor Atrium, Art & Design Building  
Art & Design

**Just 4 Laughs—Dave and Ethan**  
7 PM  
In March of 2008, childhood friends Dave Ahdoot and Ethan Fixell posted ads on Craigslist and YouTube, inviting pairs of girls to double date them. As the responses poured in, they began charting their experiences in a series of video blogs, which quickly became a YouTube comedy series about double dating. They have embarked on a national tour to "educate" college students about dating. Join CAB for this fun, free event!  
Meridian Ballroom, Morris University Center  
Campus Activities Board

#### Thursday, August 25, 2011

**Global Prints Poster Sale**  
8 AM – 5 PM  
Outside north entrance of Morris University Center (inclement weather, inside Morris University Center)  
Campus Activities Board

**Academic Advising Open House**  
2:30 PM – 4:30 PM  
Stop by to meet the Advising staff and see what they have to offer.  
Academic Advising  
Student Success Center, Room 1220

**Evening Student Reception**  
7 PM – 9 PM  
Stop by to enjoy refreshments before class, receive information and giveaways, and experience a welcoming atmosphere for evening students.  
Atrium, Engineering Building  
School of Engineering

**18<sup>th</sup> Annual Rocky Horror Picture Show**  
7 PM – 10 PM  
Dress in vintage clothing and participate in the fun – featuring the cult classic movie and all the props!  
Meridian Ballroom, Morris University Center  
Campus Activities Board

#### Friday, August 26, 2011

**Global Prints Poster Sale**  
8 AM – 5 PM  
Outside north entrance of Morris University Center (inclement weather, inside Morris University Center)  
Campus Activities Board

**Edwardsville Block Party**  
6 PM – 12 Midnight  
The Edwardsville Block Party features carnival games, activities, tons of local food options, and live music by The UltraViolets. All this and more for FREE!!  
Downtown Edwardsville

**RSAC Bags Tournament**  
8 PM  
Cost: \$10.00 Registration Fee  
Pre-register at the Intramural Sports Office

between the hours of 9 AM and 5 PM. \$10 registration fee will be due when you sign up (cash or check only). This tournament will have a 24-team max so don't miss out! Winning team will be given a cash prize and Championship T-shirt at the event!  
Block Party (Downtown Edwardsville)

#### Saturday, August 27, 2011

**Morning Volunteer Projects**  
Come get involved!  
Sign up at Kimmel Leadership Center,  
Morris University Center

**3<sup>rd</sup> Annual Foam Party**  
8 PM – 11 PM  
The Greek community will host SIUE's annual foam party. The party will consist of a DJ and sudsy foam. Come join the fun!  
Stratton Quadrangle  
Interfraternity Council

#### Sunday, August 28, 2011

**Cougar Welcome 5K Run/Walk**  
10 AM – 11 AM  
This event is open to students, faculty, staff, and alumni. All participants must present their Cougar Card to receive a one of a kind SIUE Cougar Welcome 5K T-shirt. Register online at [siue.edu/crec/intramural](http://siue.edu/crec/intramural) no later than August 26. Male and female winners will receive an IM Champion T-shirt!  
Meet at the East Vadalabene Center Entrance

**Catholic Mass**  
10:30 AM - 11:30 AM  
Catholic mass followed by refreshments and hospitality! Come on down and pray with, and meet, a friendly and welcoming community. All faiths and denominations are welcome!  
The "Dome" at The Center for Spirituality & Sustainability (across from the Engineering Building)  
Catholic Newman Student Union (CNSU)—Catholics Alive!

#### Monday, August 29, 2011

**Activities Fair**  
10 AM – 2 PM  
Enjoy student organization booths, fun, information sharing, entertainment, giveaways, and activities. Check out what student organizations have to offer!  
Goshen Lounge, Morris University Center

#### Tuesday, August 30, 2011

**Activities Fair**  
10 AM – 2 PM  
(See Monday, August 29, 2011)  
Goshen Lounge, Morris University Center

#### Thursday, September 1, 2011

**Sigma Pi Pig Roast**  
10 AM – 4 PM  
Join the men of Sigma Pi for their Annual Pig Roast and Luau on the Quad. FREE music and food. Bands and inflatable games throughout the Quad.  
Stratton Quadrangle  
Sigma Pi Fraternity

#### Friday, Sept. 2, 2011

**Ice Cream Cabaret**  
11:30 AM – 1 PM  
Cost: Students w/ valid SIUE ID: \$3 Faculty/Staff: \$5

Enjoy lunchtime entertainment performed in a cabaret style setting with faculty, staff and students! Bring your lunch or purchase food, and build your own sundae. Proceeds support the Staff Senate Scholarship. Great door prizes!  
Meridian Ballroom, Morris University Center  
Staff Senate

All events are free unless otherwise noted. Contact the Kimmel Leadership Center at 618.650.2686 for more information or visit [siue.edu/cab](http://siue.edu/cab). All events are subject to change.

**Cougar Welcome is sponsored by the Campus Activities Board.**

# Welcome back, SIUE

## From the Alestle editor in chief

The Alestle encourages interaction with updated online content

“We take great pride in bringing quality news to this campus and the surrounding community...”

- Kari Williams  
Alestle Editor in Chief

Welcome back to what will be another exciting year at SIUE!

With our transition to Division I, making strides in the new science building construction and constant updates to the campus, SIUE is growing into one of the



**Kari Williams**  
Editor in Chief

best universities in the Midwest. As the campus is emerging, so is the Alestle.

At the Associated College Press convention in Louisville, Ken., the Alestle brought home a third-place finish in the Four Year Weekly Tabloid category, beating schools such as University of Missouri-Columbia and Creighton University. At the Illinois College Press Association convention in Chicago last year, the Alestle returned with nine awards for individual reporters, editors and photographers.

We are very proud of our staff and hope to continue this trend, helping to make SIUE a standout school. We take great pride in bringing quality news to this campus and the surrounding community.

Our passion for journalism and covering SIUE and community events extends beyond our weekly print edition, which publishes on Thursdays during the fall and spring semesters.

The online edition, [alestlelive.com](http://alestlelive.com), publishes exclusively on Tuesdays during the fall and spring semesters as well.

We will be debuting our brand new website soon with updated features, including blogs, an events calendar and multimedia content.

Having an online edition to supplement our print content allows the Alestle to capture video and showcase multiple photographs, which we are not able to do in our print editions.

Additionally, staff blogs have returned, adding another aspect to our growing online content. The entire staff contributes, and we have topics ranging from sports to professional wrestling to jazz and much more.

I would like to take this opportunity to encourage students, faculty and staff to interact with our staff through the blogs. Feel free to comment for or against what our bloggers have to say. Creating a dialogue allows for the SIUE community to have more of a relationship with our staff.

In efforts for the staff to begin such

dialogue, we have created permanent locations in the social networking world. I encourage the campus and Edwardsville/Glen Carbon community to suggest story ideas, ask us questions or comment on issues important to you at either our Facebook page ([www.facebook.com/alestlelive](http://www.facebook.com/alestlelive)) or our Twitter page (@TheAlestle and @TheAlestleSport).

As a staff, we would like to hear from our readers, good, bad or otherwise and these social networking tools are a great way to get your voices heard.

One of my goals this year is to encourage the SIUE community to approach any reporter, editor or photographer with questions, comments or concerns about our product, a story or just to introduce oneself and establish rapport with our staff.

Other routes to take include stopping by the Alestle office on the upper level of Morris University Center to talk to someone on staff or pick up an application to join us as a reporter or graphics manager.

Please don't hesitate to contact the Alestle with any concerns, praises or issues you have about SIUE. We look forward to reporting on our campus and receiving your feedback!

## From the student body president

Student Government looks to keep students involved, informed

I cannot think of a better way to begin the new school year than to borrow a quote from SIU President Glen Poshard in regards to the essential values of the SIU schools system: “We believe



**Nolan Sharkey**  
Student body president

every student, regardless of their economic wherewithal, deserves the opportunity to receive a college degree, to get a good job and to help sustain their family and the great middle class, which has built America. They deserve the opportunity to make a contribution back to the greater good of their community and America.”

SIUE was founded more than 50 years ago by middle class Illinoisans who hoped to see these values come true, and it is safe to say our university's leaders are achieving and continue to be dedicated to these aspirations. Moreover, this year Student Government will strive toward the mission of creating a sustainable university that is dedicated to providing a better SIUE today and tomorrow. Sustainability will encourage this university to adhere to educating students to become leaders so as many people as possible can meet their basic needs in life. It will also provide fair access to the earth's resources, enable a decent quality of life to all mankind, celebrate diversity and, of course, preserve

the diverse ecosystem that SIUE depends upon today. In the year to come, you will see programs and events sponsored by Student Government that will encourage the education and involvement of SIUE to become more sustainable as a whole.

This level of commitment involving a better tomorrow includes supporting Pell and MAP grants on a federal and state level, respectively, which have seen drastic cuts over the last few years. It is reasonable to assume these grants will continue to be cut to make room for government budget shortfalls. Therefore, my administration will work to encourage the creation of more jobs on campus to provide financial resources to students who live paycheck-to-paycheck. Many students will see a decrease in the amount of funding they will receive from a grant and therefore, will need financial assistance in other areas. We must also work with state and federal legislators to fight these detrimental cuts to higher education.

SIUE has worked to better itself during these tough times and during the past decade has been able to transform itself from a commuter campus to a premier, metropolitan university. We have begun to gain national and even international recognition. For another year, U.S. News & World Report has recognized SIUE as a top “up-and-coming university in the Midwest.” SIUE's College of Arts and Sciences was recently approved to be the second university in America allowed to

“Big things are happening on this campus and I encourage you to become involved...”

- Nolan Sharkey  
Student Body President

travel and establish a program in Havana, Cuba, where students will be able to gain knowledge and share their experiences.

Not only are big things happening academically at SIUE, but Cougar athletics are entering into their final transition to NCAA Division I athletics. Our teams have shown we are not a school to be taken lightly. Last season, in their first year of Division I eligibility, men's soccer and women's softball spent most of their season near the top of their respective conference standings. Additionally, during summer break the Kansas City Royals drafted

Spencer Patton, an ace pitcher for the Cougar's baseball team last season. I strongly encourage students to become involved in the highly-successful student organization, Red Storm. Red Storm has worked diligently with fellow students and athletics to create an organization that supports our teams and cheers them to victory. Last year, the Murray State basketball coach applauded Red Storm's efforts by saying SIUE has one of the best road atmospheres he had seen all year. To become involved in this organization or any of the more than 200 student organizations, please stop by the Kimmel Leadership Center's front desk in the Morris University Center. They will be able to provide you with contact information for your organization of interest.

In conclusion, I want to welcome you back to the “e.” Big things are happening on this campus and I encourage you to become involved. As a commuter student from Fairview Heights, I know the temptation to come on campus for class and quickly leave when finished, but stick around and enjoy the most beautiful and one of largest campuses in the nation. Start your semester off strong and take advantage of the tutors provided to you through supplemental instruction or the tutors in the Student Success Center. While you are in the Student Success Center, swing by the Student Government office and talk to me about your concerns and suggestions or fill out an application to join Student Government. Go Cougs!

# From the SIUE chancellor

## Student involvement on campus enhances college experience

On behalf of the faculty and staff of Southern Illinois University Edwardsville, welcome to the 2011-2012 academic year, a year that promises to be one of excitement and



**Vaughn Vandegrift**  
Chancellor

opportunity on campus! At SIUE, you will have the opportunity to build on your education and experiences of the past and to pursue the vast wealth of knowledge. What an exciting time you have chosen to be a Cougar! SIUE has been named one of 68 "Up and Coming" universities nationwide for its innovative changes and for six years, our Senior Assignment Program has been frequently cited for excellence.

In addition, SIUE has been presented an award of Distinction on the 2010 President's Higher Education Community Service Honor Roll and is listed as the 21st safest residential campus of those with enrollment over 6,000 out of more than 458 nationwide. And the momentum hasn't slowed. This fall, work continues on the renovation of SIUE's existing Science Building and the construction of a new facility to form a science complex. Without a doubt, the University is on the move and you are an important part of the action!

As students, you will benefit from our excellent academic programs and our dedicated faculty and staff who are committed to providing you with high quality educational opportunities. Our

harmonious campus climate encourages open dialogue and mutual respect among individuals with different backgrounds, cultures and perspectives. Citizenship, Excellence, Integrity, Openness and Wisdom comprise our university values and guide our work, day in and day out. These values are so important to the SIUE experience that

**"Whether you are a new or returning student, commit to making the most of your time on campus.."**

- Vaughn Vandegrift  
Chancellor

they are displayed on a large banner in the Goshen Lounge of the Morris University Center (MUC).

In anything worthwhile, the outcome is often proportional to the investment. This is true in academics, but it also extends to extracurricular activities. There are many opportunities to get involved in the life of the university. For example, there are frequent faculty and student exhibits in the

Art and Design Building and in the MUC. The Arts & Issues fine arts series and the numerous student organizations (over 200!), associations and clubs all serve to broaden the SIUE experience. The Student Fitness Center is home to a variety of exciting recreational programs and students are admitted free to scheduled athletics events! The University's move to NCAA Division I sports ensures an exciting and competitive season in all sports.

Another important way to get involved in the life of the university is to stay informed and offer your opinions on campus issues. An excellent way to do this is by reading the campus newspaper, the Alestle. The name is a combination of "Alton, East St. Louis and Edwardsville" and highlights the unity of SIUE's three educational branches. The Alestle is one vehicle through which the entire campus communicates. Don't hesitate to weigh in on topics of interest.

The fall semester signals a renewed opportunity for investment in the future. Whether you are a new or returning student, commit to making the most of your time on campus. I am very pleased to welcome you to Southern Illinois University Edwardsville, a university that is on the move, nationally recognized and committed to providing excellent service and support as you pursue a degree in higher education. Best wishes for a very successful and exciting academic year.

Go Cougars! Go Big e!

Vaughn Vandegrift  
Chancellor

# Ad index

- CAB.....3
- Laurie's.....8
- The Cup.....11
- FNB.....13
- Assurance Brokers .....14
- Fiona's .....14
- Mojo's .....15
- SLDP.....16
- Annie's .....16
- CDC .....17
- Student Affairs.....18
- Mattress Source .....19
- Scott Credit Union.....19
- MCT .....20
- McKay Auto.....20
- Joe's Pizza & Pasta .....20
- Beds Beds Beds .....21
- Buffet City.....21
- PNC .....22
- Wild Country.....22
- Hollywood Tan .....23
- Bank of Edwardsville ....26
- ROTC.....27
- Campus Rec.....28
- CAB.....29
- Alumni Affairs .....30
- Custom Airbrush .....30
- Bull & Bear.....31
- CAB.....32
- MUC Admin.....33
- SIUE Credit Union .....34
- Glik's.....35
- Shenanigans .....35
- Schnuck's .....36

# From the vice chancellor of Student Affairs

## Administration offers suggestions for collegiate success

Dear Students,

Welcome to the SIUE Community! This is an exciting time in your life. As a student, you will be introduced to many new and different ideas and experiences, you will be challenged to



**Narbeth Emmanuel**  
VC of Student Affairs

think logically and creatively about difficult questions and you will be asked to discuss the answers to these questions. Join in these discussions... you have much to offer.

From my perspective, here are some valuable points to assure your success as an SIUE student:

First and foremost, invest the time and energy necessary to achieve good grades.

Experts recommend a minimum of two hours studying outside of class for every hour of class. Attend class regularly and make sure you know your instructor's attendance policy. Be on time and be prepared for every class meeting. Sit in the front of the classroom! Follow your syllabus, and make sure you are organized and your assignments are completed in a timely manner. If you need help, talk with your faculty or advisor so they can direct

you to the best source of assistance.

Second, resolve conflicts, differences and disputes by thoughtful discussion.

Civility is a cornerstone of our academic community; you are expected to act and behave accordingly. At times you may disagree with fellow members of the academic community. Part of your college experience is learning to resolve disagreements and differences of opinion in a fashion that is in keeping with your role as an educated member of the SIUE community.

Third, get involved in campus life.

There are numerous opportunities available to you to become involved in activities and services beyond the classroom. Check out the student organizations on campus, they need your participation. Consider doing volunteer work related to your academic major or participate in the social and recreational opportunities on campus. All of these activities give you the chance to interact with your fellow students, faculty and staff and serve to enrich and broaden your education.

Fourth and finally, take care of yourself.

Achieve the balance between what is required to succeed at the University and the other obligations of family and work. Occasional stress is a normal part of a student's life. How you cope with it, in a constructive manner, will make all the

difference for you. Make lifestyle decisions that are in your best interest.

Again, I welcome you to SIUE. I encourage you to follow the SIUE 4-3-2-1 formula for success: graduate in 4 years; maintain a minimum 3.0 grade point average; devote 2 hours prep time per credit hour; and involve yourself in at least 1 campus activity. I look forward to meeting you on campus and hope you find your university experience both rewarding and memorable.

Sincerely,

Narbeth R. Emmanuel Ph.D.

**"Consider doing volunteer work related to your academic major..."**

- Narbeth Emmanuel  
Vice chancellor of student affairs

alestlelive

where to get your news

alton eastsaintlouis edwardsville



# Not your perceived Greek Life

## What the Greek side of life can offer students

**JASON FRAZIER**  
Alestle Reporter

Some people may get their idea about Greek Life from movies such as "Animal House" or "Van Wilder." Fraternities and sororities at SIUE have many more responsibilities than beer bonging or keg standing.

SIUE Greek Life Coordinator John Davenport said those in Greek organizations typically spend a large amount of time attending meetings, doing community service and paying dues to help their organization on a national level.

"You don't need a Greek organization just to party," Davenport said. "People fail to realize that there are a lot of responsibilities and obligations that go along with being Greek. Greeks do some partying, however, that is only part of the picture."

Greek organizations hold



advocate | collaborate | educate

Graphic by Derrick Hawkins/Alestle

recruitment week during the third week of the fall semester. There are more than a dozen Greek organizations on campus. Each one typically caters to different personality types and people of different walks of life, according to Davenport.

"If students are looking to join an organization, they need to

look for an organization they will truly fit into and be happy in," Davenport said. "People will see through it and they are not going to be happy with it if they attempt to change who they are or put on a front to fit into an organization."

The SIUE Greek Life chapters include CPC sororities,

IFC frats and NPHC frats and sororities. There are also other independent chapters such as Alpha Omega Eta and Gamma Phi Omega.

CPC sororities, which include Alpha Phi, Delta Phi Epsilon and Alpha Sigma Tau, have a formal recruitment process. These sororities are the larger ones on the SIUE campus and have chapters on most college campuses.

"Interested women will sign up for recruitment during the week [and] will visit with each sorority," Davenport said. "At the end of the week we match them up with a sorority that is most interested with them."

Sigma Pi and Phi Kappa Psi are two of six listed IFC frats. Their recruiting process is not as structured as the sororities, allowing recruits to attend whatever events they want to attend. There is no registration fee they have to pay prior.

Culturally based sororities and fraternities on campus like Omega Psi Phi, Zeta Phi Beta and Sigma Gamma Rho are linked to the National Pan-Hellenic Council (NPHC). Traditionally freshmen are not allowed to join these historically African-American Greek organizations. You have to be a

**GREEK/pg.17**



Looking for a specific Greek organization? Here's the full list offered at SIUE

### CPC Sororities

- Alpha Phi
- Alpha Sigma Tau
- Delta Phi Epsilon

### IFC Fraternities

- Alpha Kappa Lambda
- Delta Lambda Phi
- Phi Kappa Psi
- Phi Mu Alpha Sinfonia
- Sigma Phi Epsilon
- Sigma Pi

### NPHC Fraternities & Sororities

- Iota Phi Theta
- Sigma Gamma Rho
- Zeta Phi Beta
- Alpha Phi Alpha
- Kappa Alpha Psi
- Phi Beta Sigma
- Sigma Tau Gamma

### Other

- Alpha Omega Eta
- Gamma Phi Omega

## From modeling to politics, SIUE has more than 200 groups for students

**JASON FRAZIER**  
Alestle Reporter

There is no shortage of opportunities for student involvement on SIUE's campus with the more than 200 organizations. Whether you are looking to join Student Government or power lifting, there are plenty of opportunities to get involved on campus.

The first stop for students looking to join a student organization should be the Kimmel Leadership office. Staff members such as Cheryl Heard, assistant director of Student Organizational Development, are there to help students set up organizations or find an organization that fits them.

"We will almost hold their hand and walk them through the process," Heard said. "Sometimes that is what they need. They need someone to go along with them and help them make the contact. We will do that for them at [the] Kimmel Leadership Center."

There are a large number of professional organizations available for students to join. The professional organizations are usually aligned with a particular major. Heard said she believes each SIUE major has at least one student organization linked to it.

"We try to encourage them to consider what student organizations would interest

"If you're new to campus and don't make friends as easy, join a group. It helped [making] friends a lot easier and blend into the crowd..."

- William Down  
Senior English major

them," Heard said. "I encourage them to think in terms of their academic interest or find an organization that is tied to their major. We pretty much have an organization for every discipline."

Joining a professional or academic club not only has short-term benefits, but it can also help students find a career in the future, according to Heard.

"It's a good benefit to them when they are starting to network and taking classes in their major," Heard said. "Students in those organizations help them navigate their way through the major. It also gets them connected to people in the field, so it can lead to internships and jobs."

Not all organizations are academically based. Some organizations, like the Game Development Group, focus on special interests.

Senior English major William Down said joining this particular group was a great way him to break out of his shell on campus.

"Personally, I'm not the most social person," Down said. "If you're new to campus and don't make friends as easy, join a group. It helped [making] friends a lot easier and blend into the crowd."

Some of the other special interest organizations on campus include PREMIERE Models, College Republicans and Web Radio.

Junior mass communications major Allen Stout said he has used his sports talk show on Web Radio to gain professional experience.

"It allows to me have hands-on experience," Stout said. "I wanted to have my own radio

**GROUPS/pg.7**

## Cultivating an environment for all cultures



Photo by Derrick Hawkins/Alestle

**The Center for Spirituality and Sustainability hosts campus events, bible studies, staff meetings, memorial services and student worship, though it is not owned by the university.**

**COURTNEY HILL**  
Alestle Reporter

"Odd" may be one of many words that crosses newcomers' minds when they first see the large blue dome sitting on the south end of campus. Although it may seem odd to some, the dome and its surrounding framework, known as the Center for Spirituality and Sustainability, holds a history of environmental commitment maintained in its use today.

The geodesic dome was created by R. Buckminster Fuller in 1971 who, according to Alvin

Deibert, secretary and treasurer of the Friends of the Center, was a rather peculiar man with a strong interest in environmental sustainability.

"Fuller was a world citizen [and] referred to the earth as 'spaceship earth,'" Deibert said. "He saw that everybody in the world has to work together if we're going to survive. In the world today, [the dome] is the only architectural structure that is intimately related with Fuller's life."

Juli Jacobson, business

**SUSTAINABILITY/pg.9**

**GROUPS** from pg.6

show and do my own thing. Now I know how to build segments, operate a sound board and many other things vital to running a radio program. I have also met people that have the same aspirations as I do."

Creating video games or hosting a Web Radio show may not interest everybody. Some students would rather be more physically active. There are more than 30 club sports organizations students can participate in. This list includes competitive cheerleading, rugby, ice hockey and ultimate frisbee.

There are also many cultural and religious organizations around SIUE. These groups can help students unite with others who are of the same ethnic background or religious affiliation. Heard said students in these organizations help others who are not familiar with a certain culture or religion gain a better understanding of their particular group.

An activity fair will be held Aug. 29 - 30. Students can visit a student organization booth set up in the Goshen Lounge to get a better perspective of each group. They can learn more details on how to join and activities the organizations are involved in.

"The students in charge of the booths at the Activities Fair are pretty friendly and reach out to people," Heard said. "They typically ask potential members about their interest, inform them what the organization is about and ask them to come to a meeting."

Students can create their own groups if they cannot find one that already fits them. The process begins by going to Kimmel, located in the Morris University Center, and picking up the registration forms. While filing out those forms students will also need five fellow students to sign a petition.

After completing those steps, students need to find a full-time faculty or staff member to become the organization advisor. The last steps are developing a constitution and presenting in front of the Student Organization Advisory Board.

More info about starting a group is can be found in the Kimmel office. No group seems to be off limits as. Heard said some past organizations include a Wiccan group and an underwater hockey organization.

Jason Frazier can be reached at [jfrazier@alestielive.com](mailto:jfrazier@alestielive.com) or 650-3527. Follow Jason @JFraz85



# What you missed over summer

## New off-campus housing targeting students coming



Photo courtesy of Corey Wenzel

**July 27** - The growth of SIUE has led one developer to build off-campus housing specifically geared toward students.

Developer and SIUE alumnus Corey Wenzel said the complex, called the Enclave, will be located at the north side of Illinois Route 157 at Esic Drive, about a mile from campus. Wenzel said it is overlooking a bike trail and isolated by trees, which gives it a similar aesthetic to the SIUE campus.

"We think it will complement

all the great things that are going on at SIUE," Wenzel said. "It just seems like there's great growth there. The campus is getting better every day and one of the things that we saw that was needed was a student housing complex."

Eight two-bedroom units and 112 three-bedroom units will accommodate 352 individuals at the Enclave. Each apartment is fully furnished and each room contains a private master bathroom and walk-in closet with door locks.

## Vandals hit archaeology dig site



Photo by Rebehka Blake/Alestie

**June 22** - Police still do not have any leads in finding who damaged the archaeology dig site on campus June 17.

After an act of vandalism left a carefully-crafted archaeology dig site on campus damaged, students and professors in the field remain steadfast in their efforts to unearth ancient Native American historical data. They hope to yield compelling clues to Edwardsville's rich past.

The dig site, located near Korte Stadium, was chosen for an eight-week summer Archaeology Field School course designed to prepare students for the physical methods of excavation.

Anthropology Department Chair Julie Holt said students and faculty arrived to the site Monday morning, June 13, to find several pieces of equipment, including shovels, filter screens and a \$200 transit used for land surveying, stolen. Additionally, three of four excavated pits were dismantled.

Holt said the diligent nature of the work, student exploration

training and information exclusive to each pit were compromised by the criminal act, which took place sometime during the weekend of June 10.

"It's like tearing up a book and there is no other copy of that book," Holt said. "You've just removed half of the pages, tore them up and threw them away. If [the vandals] think they're going to find something here that's worth money, they're wrong."

## Chatt ineligible for start of basketball season

**July 27** - The SIUE men's basketball team will be without its leading scorer from last year for at the least the beginning of next season.

SIUE Director of Athletics Brad Hewitt confirmed junior guard Cornelius Chatt has been rendered academically ineligible for the upcoming season.

Chatt, a native of Madison, transferred to SIUE from Wabash Valley Community College along with teammate Corey Wickware last season and cracked the opening night starting lineup.

Chatt appeared in all 28 games for the Cougars last season, starting 21 and averaging



points per game.

At SIUE, he scored 20 or more points six times during the season and scored in double-figures 10 of his last 11 games. He was second on the team in steals with 27 and was third on the team with 64 assists.

While Chatt is ineligible for the start of the season, Hewitt said he is still eligible to remain a student at SIUE.

12.1 points per game. He improved upon a sophomore season at Wabash Valley where he averaged 11

## Sam's Club coming to Glen Carbon in 2012



Photo courtesy of Melissa Millard

**June 29** - After four no votes and two months of negotiation, the new Sam's Club has been approved to start building in Glen Carbon Labor Day 2012.

When Sam's Club came to the board in February 2010, Glen Carbon Mayor Robert Jackstadt said they had a difficult time reaching a consensus.

"Anytime the city decides to give incentives to any entity, it's a tough decision," Jackstadt said. "Our Village Board and I share a philosophy that incentives should be rarely granted and there should be an extraordinary or unusual reason to give any business that wants to come to

your town some sort of incentive."

The developers originally asked for \$7.5 million in incentives, which means Sam's Club would be reimbursed up to that amount for the money they spent investing in the property. The board, including Jackstadt, felt this amount was too much. When they voted in April, the decision was 4-3 against the project.

"It was a close vote," Jackstadt said. "I think I had voted one other time in six years to break a tie, that's how rare it is. I voted what I thought was best for Glen Carbon taxpayers."

## Patton drafted by Kansas City Royals

**June 7** - After waiting until the second day of the MLB draft, Spencer Patton finally heard his name called June 7.

Patton, the Cougars' senior pitching ace this past season, was selected by the Kansas City Royals in the draft's 24th round, 726th overall.

Patton led the team in wins with nine this past season, including throwing a complete



game shutout, while posting a 2.55 ERA. He also led the team in strikeouts with 109, which tied the second-highest total in a single season for the Cougars. He was second on the team in innings pitched with 88 1/3.

Opponents hit .219 off the

rightly out of Kinmundy.

Both the St. Louis Cardinals and the Royals brought Patton in for workouts last week.

Patton is the 57th player from SIUE to go on to play professional baseball, and the first player to be drafted since Clay Zavada was drafted in the 30th round by the Arizona Diamondbacks in 2006.

# MCT provides transportation around SIUE, area

**JASON FRAZIER**  
Alestle Reporter

Madison County Transit provides transportation for students trekking across campus and those who want to explore the area.

MCT and SIUE partnered up more than 10 years ago to begin Cougar Shuttle. The shuttle does not cost SIUE students if they are traveling inside the Fare Free zone.

The Fare Free zone consists of five locations on campus. Two of those locations are at 4F and Building 519 in Cougar Village. Hairpin Dr. is another stop, which is located directly in front of Peck Hall.

Students can also be picked up or dropped off free of charge at the Early Childhood Center located off Circle Dr. During the first and last two weeks of the semester, the Cougar Shuttle goes to Textbook Services.

Freshman music education major Britain Lockhart of Chicago is a frequent user of the shuttle. Since she does not have a car on campus, she depends on it to get around on and off campus. On a 100-degree day, Lockhart said she is grateful the shuttle is around so she does not have to walk from Cougar Village to Peck Hall.

"It's a great convenience. Although I don't have a car here, I can still get to classes on time," Lockhart said. "Taking a 15 minute walk on one of the hottest days of



Buses arrive and leave from Hairpin Drive every 10 minutes for convenience as part of MCT's Cougar Shuttle, which stops at various places across campus.

Photo by Michelle Beard/Alestle

the summer would be torture."

Junior criminal justice major Trania Mitchell has a vehicle available to her. However, she would rather depend on the MCT services here at SIUE.

"My car works but it's not reliable. I'd rather use the shuttle because it's more reliable," Mitchell said. "I am grateful that there is public transportation here. If it wasn't I would have had a hard time getting to class."

Monday - Friday, shuttle service picks up students

beginning at 6:45 a.m. The last shuttle drop-off and pickup is around midnight at each location. The shuttle runs every 15 minutes in a majority of the locations. The only spot it runs every 10 minutes is Hairpin Dr. Transportation is still available on the weekends and during break times but start and stop times are both reduced during these periods.

Director of Housing Michael Schultz said students can have issues of getting where they need to be on time if they try to catch

the last possible shuttle.

"Everybody tries to wait on that last minute bus so they can get a few last minutes of sleep," Schultz said. "They may find out that particular shuttle is overcrowded."

MCT also provides affordable transportation for students looking to leave the SIUE campus as well. The highest rate is a \$3 one way ticket to St. Louis. You can check MCT.org for further information on pricing and other drop-off locations.

Some shuttle users do not

ride as frequently as Lockhart. Senior engineering major Kumar Jambami said the shuttle provides a cheaper and more reliable alternative than bumming a ride.

"It's an easy mode of transportation," Jambami said. "Instead of calling your friend for a ride and waiting for him, just hop on the shuttle. For \$1 you can get wherever you want."

Jason Frazier can be reached at [jfrazier@alestlelive.com](mailto:jfrazier@alestlelive.com) or 650-3527. Follow Jason @JFraz85

**Late Night "Happy Hour"**  
**1/2 off Select Appetizers**  
**MON & TUES 8 - 10 PM**  
**THURS - SAT 9 - 11 PM**

**Tuesday "Trivia" Night**  
**Front Bar 7:00 - 8:45 PM**  
Prizes no entry fee  
teams or individuals

**Saturday Jam Session**  
**11 YEARS STRONG!**  
**Front Bar 2:00 - 6:00 PM**

**Sunday on the Patio**  
**Grillin' 2:00 - 8:00 PM**  
**Live Music 3:00 - 7:00 PM**

**Tuesday \$1.75<sup>domestic</sup> Longnecks**  
**Friday 140Z Maragrita \$2.50**  
**Saturday \$2.50 Rail Vodka**  
**Lemonades**



**STAGG BOTTLECAP GIVEAWAYS**  
**Thursday Aug. 25th**

**DOWNTOWN EDWARDSVILLE**

Outside Patio | Curbside Dining

Huge Menu | 3 Bars

**DRINK SPECIALS 7 DAYS A WEEK**

**DARTS & VIDEO GAMES**

**THURS Free Pool 6 - 9 PM**

Live Music

**WED 6:30 - 10:00**

**FRI & SAT 9:30 - 1:30**

21+ TO ENTER BACK BAR & PATIO

**Happy Hour Specials 4:30 - 7:00**

**MON \$0.45 Hot Wings**

**TUES \$0.50 Mini Burgers**

**WED \$0.25 Tacos**

**THURS \$5.50 Pick 3 Basket**

**FRI \$5.00 Mommas Nachos Platter**

**Everyday**

**Natural Light**

**\$3.50 Pitchers \$1 Pints**

**Stagg \$1 Bottle**

**Thursday**  
**College Night**

**\$2**  
So-Co Lime Shots  
Rail Vodka Drinks  
Bubble Bombs

**For Your Entertainment**  
**9:30 PM - 1:30 AM**

**DJ Too Tall**  
**w/ Karaoke**

or

**Aaron Kamm**  
**& the One Drops**

**music schedule @**  
**[lauriesplacebar.com](http://lauriesplacebar.com)**



# How to park without having to pay up

**JOHN LAYTON**  
Alestle Reporter

Parking Services' mission is not to dole out as many tickets as possible, despite how many students might feel.

In fact, according to the Director of Parking Services Bob Vanzo, parking services would prefer not to write any tickets.

"Our primary purpose is to provide close, convenient and well maintained parking for the university at all three locations," Vanzo said.

The first time a car is found parked in the wrong lot, without a current permit or parked in a non-

parking zone or a non-registered area, a ticket for \$15 will be issued. For each offense after that, the ticket fee increases another \$15 until the seventh violation. Tickets for the seventh violation and any after that are \$75.

Other fines parkers can incur are \$15 for a meter running out or being out of order and \$15 for exceeding a short term time limit. There is a towing fee of \$75. The misuse, alteration or fabrication of a permit warrants a \$75 fine as well.

University Police also write state citations for handicap parking violations. These citations are not handled by Parking Services. They must be paid or appealed to the state.

Appeals to Parking Services must be filed within 10 days of receiving the ticket. Appeals can be made at the Parking Services office in Rendleman Hall or online at their website. Part of the fine must be paid in order to file an appeal. If it is granted, credit will be given for the portion paid.

Parking Services will first look at the appeal and make a decision on it. If the decision is not satisfactory, another appeal can be made to the Appeals Committee, which is made up of faculty, staff and student volunteers. While the person making the appeal can appear in front of the committee, he does not have to. Any decision made by the Appeals Committee is final.

Any university fine that is not paid within 10 working days has a late fee of \$10 added on.

A student who does not pay their fines is subject to various

punishments. These students are placed on accounts receivable, which means they cannot enroll in classes or receive a transcript until the fines are paid. Their vehicles are also at risk of being towed.

Parking Services' purpose does not include making money for the university, Vanzo said.

"We really don't make any money for the school at all. We're a self-sustaining operation," Vanzo said. "We just make enough to cover our own operations."

These operations include more than patrolling lots looking for violations.

"If it weren't for parking services, there wouldn't be any parking lots. The state doesn't give the university money for parking lots. We have to build them," Vanzo said. "It's a mechanism to basically offer customers as convenient as possible parking and with parking goes lighting, emergency phones and a motorist assistance program so if their cars won't start, they can call somebody to come with jump starters and start their vehicles."

Here at SIUE, there are 52 parking lots with a total of 9,275 spaces. These spaces include 262 parking meters, 13 visitor spaces, 93 motorcycle spaces, 204 handicap spaces and 97 service vehicle spaces.

Vanzo said he wants to make students aware of the parking situation this fall, which will be complicated with the construction at the Science Building, Art and Design Building and Vadalabane Center.

"There are going to be a lot of construction crew [workers] on campus. That means they have to park somewhere which means

**PARKING/pg.15**



Graphic by Michelle Beard/Alestle

## SUSTAINABILITY from pg.6

ministrators for the center, said Fuller's advocacy of a sustainable world is revealed through the dome's structure and artistic design.

"The one here at the center is of the earth," Jacobson said. "There's a map of the world on the glass. When you're inside the sanctuary and look out, it's like being inside the earth looking out. It's a unique experience."

The dome was constructed with few materials and was created to stand freely.

Presently, the dome is a primary element of the Center for Spirituality and Sustainability, and is used for a variety of school events, bible studies, staff meetings, weddings, memorial services and student worship services of all denominations, despite the fact that it is not owned by SIUE, according to Jacobson.

"Everyone is welcome here, [and] we corroborate with the university," Jacobsen said. "The way we stay open is by renting space here and donations."

Local church communities can rent out the space for Sunday services, and the center is also home to a sustainable garden surrounding the property.

According to Sister Calzetta, minister of the Catholic Campus Ministry, the Center for Spirituality and Sustainability offers an important

spiritual outlet for the campus community, while also providing a quiet space for personal reflection, studying or relaxation.

"It's got wireless access, it's got a library [and] it's got couches where people can take naps," Calzetta said.

The center also provides complimentary coffee and teas. Free food is also stocked in the refrigerator for students wishing to recharge from a stressful school day.

The center, according to Calzetta, is a constant attribute to the plight of the world and how it must be cared for.

"In this day in age when we're all trying to take care of the universe because it's being abused in so many different ways, it's a good reminder of trying to hold the world gently and being aware of the ecological needs the world has," Calzetta said.

There will be a free pasta dinner at the Center for Spirituality and Sustainability on Aug. 22 during Welcome Week for students who wish to learn about the center, the dome and religious organizations affiliated with the Center.

Courtney Hill can be reached at [chill@alestlelive.com](mailto:chill@alestlelive.com) or 650-3527. Follow Courtney @CHill824

# Friday 19 upcoming events

## August

Just 4 Laughs: Dave & Ethan

Meridian Ballroom

24<sup>th</sup>, 7 p.m.

Rocky Horror Picture Show

Meridian Ballroom

25<sup>th</sup>, 7 p.m.

Edwardsville Block Party

Downtown Edwardsville

26<sup>th</sup>, 6 p.m.

Volleyball - SIUE Invitational

Vadalabene Center

26, 27<sup>th</sup>, 7 p.m.

## September

Men's soccer v. Green Bay

Ralph Korte stadium

1<sup>st</sup>, 7 p.m.

Women's soccer v. Western Illinois

Ralph Korte stadium

2<sup>nd</sup>, 7 p.m.

Dan Savage

Meridian Ballroom

13<sup>th</sup>, 7 p.m.

## October

Three Dog Night

Meridian Ballroom

8<sup>th</sup>, 9:30 p.m.

Zucchero

Meridian Ballroom

20<sup>th</sup>, 7:30 p.m.

## November

Women's basketball v. Valparaiso

Vadalabene Center

12<sup>th</sup>, 1 p.m.

# Unwinding after a test (if you're 21, of course)

**AJ SANSON**

Alestle Managing Editor

For those over the age of 21 and looking to really capture the "college experience," Edwardsville does not leave them shut out.

With a downtown Main Street district featuring Thursday night hot spots such as Laurie's Place, Big Daddy's and Stagger Inn in addition to Shenanigan's Bar and Grill off State Route 157, students can get the college experience at a relatively cheap price.

Owner of Laurie's Place, Laurie Chavez, said her bar tries to cater to the community as well as the college crowd.

"We do something for everybody," Chavez said. "We have people from Springfield that come in here, we have people from St. Louis that come here. As far as community-wise, it is a destination."

Laurie's Place has been voted the No. 1 bar in Edwardsville seven years in a row by a survey by the Edwardsville Journal. The back bar and patio is 21 and over only, but the front bar allows those of any age to come in and grab a bite to eat. Chavez said bands are generally playing at either one of the two sections on any given night.

Like other bars in the area, Chavez said Thursday night is her big night.



Photo by Derrick Hawkins/Alestle  
**Stagger Inn recently started keeping their kitchen open late for the bar crowd. The bar is known for its open mic nights and other live music events. Manager Craig Knedel said some artists bring a cover charge, but usually not more than \$2.**



"It's wonderful, you've got eating spots in between us [and other bars] for those to go eat after they're done partying," Chavez said. "Edwardsville's a cool little town and I think the college kids like it. I think they come downtown for that downtown feeling."

Chavez said her bar is known for its food happy hour that runs Monday-Friday from 4:30-7 p.m. as well as \$1 Natural Light pints

every day of the week. A full menu and drink special listing can be found at [www.lauriesplacebar.com](http://www.lauriesplacebar.com).

Craig Knedel, a manager at the Stagger Inn and employee of the bar for 14 years, said he has seen the local bar scene grow as SIUE's student population continues to grow.

"We've always tried to bring in a decent student crowd," Knedel said. "It's definitely been growing

more; the community's reached out towards the college and the college back to the community. When I started here it was more like two separate entities."

Knedel, like Chavez, said his bar also brings in crowds of all shapes and sizes.

"It's a pretty collective group," Knedel said. "You can have anything from judges here to students and anywhere in between. Different bands bring in

a different crowd."

Knedel added that the bar has recently started keeping its kitchen open late on weekends until 2 a.m. to cater to the crowd. He also said like Laurie's, Stagger Inn is known for live music featuring open-mic nights on Mondays and Sundays with live bands Thursday-Saturdays.

Although the crowds are

**BARS/pg.16**

## Hidden gems: Edwardsville's unique stores, restaurants

**COURTNEY HILL**

Alestle Reporter

Somewhere in the midst of the dense, jungly thicket that is collegiate-level study, there is an important break for fun, de-stressing and socializing among students; one that typically involves traveling outside of the local neighborhood.

But before taking the car over to that western gateway, consider the Edwardsville and Glen Carbon communities. There is a wealth of hidden gems within these local areas that don't break the bank; you just have to know where to look.

The Wildey Theater, located at 254 N. Main Street in downtown Edwardsville, has a rich history surrounding its early 20th century beginnings, its downturn in the 1980s, followed by its recent resurrection in April. It remains a staple of the Edwardsville community.

Although The Wildey was originally built specifically for opera in the early 1900s, it shifted to the movie format to remain technologically forward. However, today with the instatement of Theater Manager Craig Leitner, the theater will incorporate numerous forms of entertainment into its repertoire of fun activities.

"We're trying to get as much variety into the schedule as we possibly can," Leitner said. "We're doing bands, we're doing all sorts of concerts, events for children, senior events ... We'll do some comedy, we'll definitely do



Photo by Michelle Beard/Alestle

**Annie's Frozen Custard on Main Street offers a variety of custard flavors, along with a 10 percent discount for students with a valid ID.**

theatrical productions...and the whole gamut of movies."

The Wildey Theater can be considered a gem of the community because it serves as a great asset to local businesses and entertainment, and gives SIUE students leeway on gas money and entrance fees, according to Leitner.

"If you haven't been here, it's a great place to come," Leitner

said. "To be able to come to a great concert or a really good comedian or a wonderful movie that's five minutes from where you live, it makes it a lot easier and it's a lot more pleasant."

The Wildey offers student discounts on all shows.

My Treasure House on 120 N. Main Street, Suite A in downtown Edwardsville, is one of

several shops that salvage antique goods in addition to selling new items. According to co-owner Cindy Kenney, the store offers much more than re-used goods.

"We save things," Kenney said. "For instance, we'll go to an estate sale or auction and buy a table that was headed for the junk yard, do some work on it, and now it's a hidden gem again."

Opening in February 2011, My Treasure House is new, but has already established loyal customers due to its low pricing, items that appeal to younger and older crowds and the lengths taken to customize items for customers.

Kenney considers her store a hidden gem due to the quality in production and great pricing.

"We feel like, with our economy being downturned, our business is booming here," Kenney said. "We help people be able to maintain the level of living that they were before the economy got bad by shopping here."

Although there are no student discounts, there are daily sales in the store with very low prices.

Annie's Frozen Custard is located at 245 S. Buchanan Street in Edwardsville, and provides a delightful assortment of treats for an assortment of palates. From fruit smoothies to hot dogs, Annie's pretty much has the spread covered, but General Manager Rafé Purdy said most patrons come to the quaint little shop for the variety of tasty custard options that cannot be found in many other places.

"[Custard] is similar to ice cream, but the key difference is that it actually contains a real cream and butterfat, which makes it really rich," Purdy said. "Think of it as a gourmet ice cream. Our big top-sellers would be our tortoise sundae, with caramel, hot fudge and pecans over vanilla with whip cream and a cherry, followed by the raspberry truffle, [with] raspberries and hot fudge."

Annie's has been in the area for 15 years, regularly producing new creamy creations, such as the Strawberry Shortcake Bowl, to appeal to customer tastes. The shop also remains invested in the community, sponsoring many of the local athletic programs, concert events and fundraisers. According to Purdy, Annie's is a mainstay because of its quality product in addition to its dedication to community.

"We're really unique in the product we sell in that, we're not a franchise; we're not cliché catalogue," Purdy said. "It's very much an individual product that we personally taste and test everyday to improve upon."

Annie's offers a 10 percent discount to students with a student ID.

Peel Wood Fired Pizza is located in a new business complex at 921 S. Arbor Vitae in Edwardsville, and specializes not only in wood fired pizza, but a diverse mix of European and Asian-themed gourmet cuisine. It is best known for its exclusive cooking

**GEMS/pg.13**

# Wasting time online staff picks

**MICHELLE BEARD and AREN DOW**  
Photo Editor and Copy Editor

Have a 10 page paper due, but would rather just surf the Internet for entertainment instead instead? Well, here is a list to get your procrastinating started.

## turntable

**Turntable.fm**  
Turntable lets you be the DJ for a room full of head-bobbing avatars. It's like a social version of Pandora. You can meet pretty okay people and find new music. There's a room for every genre imaginable. Turntable is currently invite only beta.

## The Oatmeal

**TheOatmeal.com**  
The Oatmeal is informational and hilarious. From comics about grammar to quizzes about fighting Justin Biebers, The Oatmeal has funnies for everyone.

## nintendo8.com

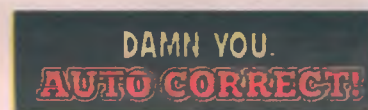
**Nintendo8.com**  
Ahh, nostalgia. Is there anything better than a huge database of 8-bit games from Nintendo and Sega? OK, maybe a few things, but not many. From the original "Super Mario Bros." to "Blades of Steel," there are games for whichever you grew up on, or never had the chance to play.



**FunnyorDie.com**  
Still very much worth a few hours if you haven't checked it out before. Will Ferrell and Adam McKay created it in 2007, and since then hundreds of Hollywood actors have been in video shorts usually much funnier than the \$10 comedies in theaters.



**Cracked.com**  
Lists, just like this one, that litter Cracked usually try to find the humorous undertones of pop culture. But they also delve into history and math and provide a decent amount of trivia to impress your friends after forcing it into a conversation.



**DamnYouAutoCorrect.com**  
Don't you ducking hate when your phone autocorrects your texts? Luckily, it's a pretty widespread problem. User-submitted screenshots of such errors are posted daily, but I don't recommend reading them in class - they tend to cause unstoppable giggles.

## GRANTLAND

**Grantland.com**  
A mash-up of sports and pop culture commentary highlight the website born out of the mind of Bill Simmons. Yes, it is controlled by ESPN, but the articles have a great deal of substance and are engaging to those of us who watch SportsCenter daily.

## lifehacker

**Lifehacker**  
Forgot the combination to your bike lock? Having trouble recalling information from class? Need to babyproof your dorm room from your roommate? Lifehacker has all the tips and tricks you need to do these things. It's like McGyver in metablog form. Lifehacker is only one of Gawker Media's eight awesome metablogs.

## KONGREGATE

**Kongregate.com**  
If you're into creating games, here's a chance to make a little money if the online community thinks you're worthy enough. If you're not into creating games, enjoy a gigantic database of free games. Most emphasize gameplay, and some have done it quite well for user-created content. Try "Gravitee Wars 2" or "Monster Slayers" to start off.

here are some cheap apps to help pass the time or have fun

AJ Sanson, Managing Editor



**ESPN Fantasy Baseball.** Aside from Facebook and Twitter, I use it the most. I'm always busy or on the go it seems so I have to set my daily lineup as I go. It's pretty handy but the problem is if I remember to check my team every day or even find the time.



Ashley Seering, A&E Editor

**Doodle Jump.** It's a simple game that becomes addictive almost instantly. It's a great way to relieve stress that doesn't require intense thinking. It's proven to be a great way to pass time in airports.



Lexi Cortes, Opinion Editor

**Missing Word.** It has become one of the few free apps that I actually use. One new game is added daily and I have gotten in this habit where I stay up until midnight just so I can play the new game. You could say I'm addicted.



Michelle Beard, Photo Editor

**epic win.** Turns a boring to-do list into an adventure quest log. For each task completed, you gain experience points, gold and loot. This app makes doing homework and chores fun. \$2.99



Allan Lewis, Sports Editor

**Twitter.** This is going to sound incredibly boring, but my favorite app has to be Twitter. I like being automatically notified when someone responds to my tweets or sends me a message. It is also really easy to just pull out the phone and send out a tweet. I am obsessed.



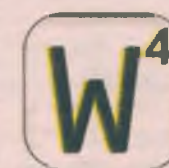
Aren Dow, Copy Editor

**Planetary.** Organize your music into a galaxy filled with stars (artists), planets (albums) and moons (songs). Maybe it's just the space junkie in me, but choosing music flying through space is pretty sweet. Only for iPad.



Kari Williams, Editor in Chief

**GlowColoring.** Turning your screen into a virtual Lite-Brite can be highly entertaining. Write a message to send to friends letting them know you're heading to get something to eat turns into something with a little flair.



Mat Camp, Chief Copy Editor

**WordFeud.** Test your mastery of English with a portable Scrabble clone. Create an account and invite friends or play against random opponents. I usually have at least six games going at a time.

# SSC: A hub for student tools

**KARI WILLIAMS**  
Alestle Editor in Chief

In addition to Kaldi's Coffee, a large study area and having rooms available for group projects, the Student Success Center houses an array of SIUE resources. From International Student Services to Disability Support Services and the Career Development Center, many needs are met through the SSC.

## International Student Services

International Student Services coordinates the arrival of international students and helps students study abroad.

During the school year, international students can get more in touch with the university through the International Student Council, according to International Student Services Director Ron Schaefer.

According to Schaefer, Center for International Students Specialist Geet Vanaik is available to deal with issues concerning visa status, such as if students have to return to their home country mid-semester.

"[International students] have to be sure to have the paperwork that will allow them back in to the country on their return and they

also have to make sure they have made contact with all of their professors," Schaefer said.

Additionally, students go through the International Student Services office for study abroad opportunities. Study Abroad Coordinator Julie Beall-Marshall coordinates the study abroad program.

"[Study Abroad Coordinator Julie Beall-Marshall will] have a program where maybe we have a student who's just back from Argentina... and the student will put together a program where they talk about their experience," Schaefer said. "Then Julie will, in addition, provide background information for students who are interested in doing something similar."

According to Schaefer, most students use the SIUE website to find study abroad information, as well as brochures in the International Student Services office.

Schaefer said there are three study abroad myths that are important to recognize: cost, additional course work and use of financial aid. Financial aid can be used toward study abroad and toward course equivalents at the university students attend in

another country, according to Schaefer.

"Students can participate in study abroad, semester-long study  
**SSC/pg.12**

CUPCAKES • COOKIES • COFFEE • FREE WIFI

Bring this coupon into THE CUP and get one **FREE CUPCAKE** when you buy 2 cupcakes

Edwardsville location only. One coupon per customer. Not valid with other offers. Expires 9/30/2011.

theCUP

university pointe II  
1057 century drive  
edwardsville, IL 62025  
618.656.2287

CRAVETHECUP.COM

# 'A safe place to ask questions'

## Academic Achievement Center helps with writing, testing

LEXI CORTES  
Alestle Opinion Editor

The Academic Achievement Center offers students a safe place to get help and also an opportunity to earn credit hours.

Testing Services business and administrative associate Katie Green said the most important thing they do are the proficiency tests. Proficiency tests give students the opportunity to earn credit in a course, usually without paying for it or even attending.

"Out of class proficiency means the student can't be enrolled in the course," Green said. "If they just stop by our office we give them a form that they can take to textbook services and rent the course materials to study from before they take the test."

In class proficiency tests are also offered through Testing Services, which are for students who have already paid the tuition, but they feel they understand the material well enough to test out of

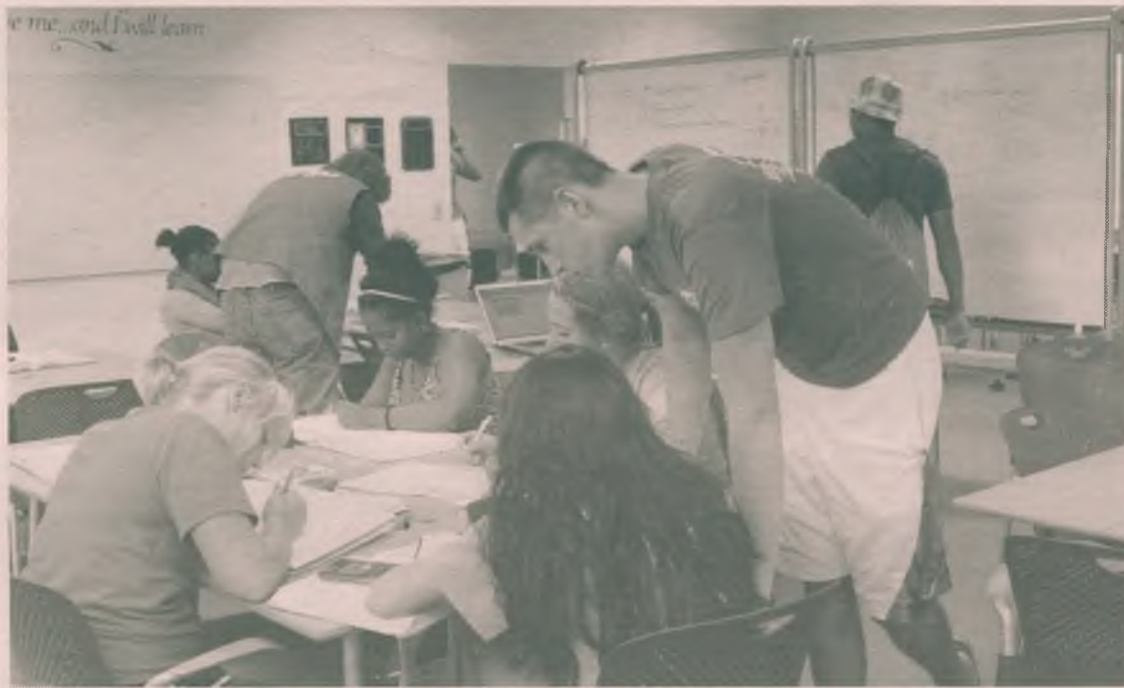


Photo by Rebehka Blake/Alestle

The Academic Achievement Center offers students the opportunity to get assistance with writing, math and science. Student workers also assist students with test preparation.

## Hours and times for the Academic Achievement Center

□ Students are permitted to come in twice per week to the Writing Center. To make an appointment, students can stop by or call the (618) 650-2045. Call at least a day or two ahead of time.

□ The Math Resource Area is open from 9:00 a.m.-7:00 p.m. and the residence hall hours are from 7:00 p.m.-9:00 p.m.

the course.

"You could talk to your professor about if they offer an in class proficiency [exam] and they'll give you kind of what's equivalent

to the final exam," Green said. "If you pass it you just don't have to come back to class for the rest of the semester. Whatever grade you get on that test is the grade you

get for the course."

Green said in addition to the proficiency tests, students can also proctor their tests from other universities for a fee of \$20.

"Sometimes we have students who are taking classes at another university online and they have to have their test proctored and they can do that here," Green said.

Green said one common misconception is that Testing Services can help students prepare for their tests.

"We're not allowed to be any part of [test preparation] since we see the tests," Green said. "They say subconsciously you'll still kind of end up giving away what's on the test if you try to help students prepare for it. That's where the rest of our department comes into play, like the writing center and the math resource area."

Writing Center coordinator Chad Verbais said the services offered in the Writing Center are beneficial to students no matter the discipline or field they are studying.

"A writing center has been in existence in some form on this campus since the early '70s," Verbais said. "So almost since the beginning of the university, they've recognized the importance of a writing center and I think that's great."

The Writing Center recently set up a help desk in Lovejoy Library to assist students with their writing questions in 10 minute sessions. Verbais said it was very successful.

CENTER/pg.16

## SSC from pg.11

and do it in a way that helps them graduate... and they can use their financial aid in support of that," Schaefer said.

A lot of the organizations have scholarships available, along with federal government scholarships, according to Schaefer.

"The federal government has some great scholarships that are available for study in areas where students typically don't undertake a study abroad," Schaefer said. "By that they mean a place outside of European theater... going to Latin America, going to Africa, going to Asia, there [are] various kinds of support lines that can help students, especially if they're on a Pell Grant."

To participate in study abroad, students must have 30 credit hours, or one year of undergraduate work completed.

"They can come in and apply and get things in motion [as freshmen], but they need to have those credit hours and, in most cases, students will need a letter of reference from a faculty member for a particular study abroad cycle," Schaefer said.

Travel study experiences are also run through the International Student Services office.

"That's another way for students to participate in study abroad; to go with a faculty led program and oftentimes the length of those faculty led programs is anywhere from two to four to six weeks," Schaefer said. "So sometimes there's more flexibility in terms of use of financial resources, but many of those are also very

academically constrained.

### Career Development Center

Students looking to get a head start on reaching their career goals can turn their attention to the Career Development Center (CDC), located on the lower level of the SSC.

CDC Director Suzanne Siebert said students typically go to the CDC for career exploration and major decision-making activities.

"The CDC helps with job preparation by offering skill building assistance with topics such as resumé development, cover letter preparation, interview techniques, job search techniques, networking, use of social media and business and professional etiquette," Siebert said.

The CDC hosts career counseling, which is provided through one-on-one appointments, to determine a student's major or career path.

"Students can work with their career counselor... to learn what employment opportunities exist within a given field, to develop a job search plan, to create a solid resumé, to get more information about getting real-world work experience through participation in a co-op or internship or to have a mock interview," Siebert said.

Students benefit from the career counseling experience by clarifying career paths and goals, and according to Siebert, developing professional employment skills for the future.

Career fairs are held in the fall and spring semesters, focusing on

the College of Arts and Sciences, School of Business and the School of Engineering, along with non-teaching candidates from the School of Education. Siebert said the fairs also includes graduate schools. The Health Careers Fair is held for the School of Pharmacy and School of Nursing in November.

"Companies and organizations attending the career fairs range from small, regional employers to large national and international corporations as well as many state and federal agencies," Siebert said.

Typical student turnout for career fairs, according to Siebert, is around 1,500 students.

"We are always hoping for this number to increase as meeting employers face-to-face and networking helps to increase a student's chance of finding employment while in school through a co-op or internship or a full-time opportunity upon graduation," Siebert said.

Mock interviews are also held on campus in October and April and bring 20 to 30 regional recruiters to campus.

"The first 30 minutes is a real-life interview scenario for the student followed by a 15-minute discussion with the recruiter about things that the student did really well and things that could use some improvement for future interviews."

According to Siebert, individual mock interviews can be scheduled with a career counselor at any time. To get involved with a mock interview day or for more

information on the CDC, students can check the CDC website, siue.edu/careerdevelopmentcenter or call 618-650-3708.

### Disability Services

Director of Disability Services Phil Pownall said Disability Services offers students with documented disabilities reasonable academic accommodations to access the university and its programs.

"Those students who may have disabilities in learning or who need instruction on how to study, take tests, take notes [or] managing their time can work with the learning specialist, Jim Boyle, to do those kinds of activities," Pownall said.

Pownall said students with a documented disability have to self-disclose their disability and provide the disability's functional impacts.

"This is how we determine reasonable accommodation; how your disability impacts you ... but you, the individual with that disability, and are those functional impacts creating a barrier that is keeping you from accessing the institution and its programs," Pownall said.

To register with Disability Services, students fill out an intake form, self-disclose the disability and provide documentation for review. The length of time it takes for the review depends on the student.

"It could be the same day if they bring the documentation," Pownall said. "Review of the documentation is to certify [that it is] coming from the right source or a source that is sophisticated

enough to make these calls."

Once the review is completed, accommodation requests can be made. Pownall said common requests include note taking assistance, extended testing or evaluation time and having books in alternative formats.

"We do a lot of books and alternative format can be enlarged print; audio could be electronic," Pownall said. "The methodology depends on the disability."

Students can register at any time, but Pownall said accommodations are not retroactive.

"You can't start and go, 'Well, I made a mistake. I should've asked for more time on this exam' and then want to take the exam over," Pownall said. "That doesn't work."

Students are made aware of Disability Services through the course catalog, syllabi and SIUE's website.

According to Pownall, most students with disabilities just want to be students.

"They just want to go to their school and they recognize that disability doesn't mean inability. It means doing something in a different way," Pownall said. "It may not be the way the majority does it, but it's still doing it. All students with disabilities are required to take all exams, they're required to do all the work. They're going to earn the same degree as their non-disabled peers."

Kari Williams can be reached at [kwilliams@alestlelive.com](mailto:kwilliams@alestlelive.com) or 650-3530. Follow Kari @Kari\_Williams

# Cougar Jobline: helping plan for the future

**ASHLEY SEERING**  
Alestle A&E Editor

It's never too early to start planning for the future and the Cougar Jobline, supported by the Career Develop Center, fully supports that idea.

Career Counselor Robin Kilpatrick said students can find and participate in co-op and internship programs through Cougar Jobline. Full-time positions are also posted on the website.

Cougar Jobline appeals to everyone from current students to alumni, according to Kilpatrick.

The website directs students to bring in a resume to the Career Development Center so it can be critiqued by a counselor.

"I've had employers tell me that Cougar Jobline is one of the only places where they post openings because they trust us," Kilpatrick said.

Kilpatrick said Cougar Jobline is a beneficial part of the Career Development Center.

"[Cougar Jobline] has been very successful in connecting students with employers, especially those they may not have known about," Kilpatrick said.

Kilpatrick added that employers, ranging from the local library to larger businesses such as Boeing, post opportunities on Cougar Jobline.

Kilpatrick said the employers understand that students may not be able to dedicate all of their time to a co-op or internship.

"They are fairly flexible," Kilpatrick said. "Employers know students have academic commitments."

Student worker Rachael Cox, a junior mass communications major from Alton, organizes the career fairs for the Career Development Center and said Cougar Jobline helps students find jobs they are qualified for.

"Students can go on the website, find an internship or co-op program and we make sure they are qualified for the job," Cox said.

Cox said the Career Development Center contacts the employers directly for the students if they find a match.

"Employers also contact us and we give them their own account so they can post available positions," Cox said.

Cougar Jobline does almost all the work for the students, but

Cox said students must be committed to planning their own future.

"Cougar Jobline is definitely for serious students, mainly juniors and seniors," Cox said.

Junior mass communications major Allison Wildt of Alton said she plans on taking advantage of Cougar Jobline.

"I didn't even know [Cougar Jobline] existed," Wildt said. "But now that I do I will definitely be using it."

Wildt said she thinks professors should encourage students to take advantage of on-campus services like Cougar Jobline more often.

"The only place I go [on campus] is between my car and my classes," Wildt said. "I feel like [a professor's] influence would make a difference."

Cougar Jobline can be accessed at <http://www.siu.edu/careerdevelopmentcenter/jobline.shtml>.

The Career Development Center is located in the Morris University Center. For more information call 618-650-3708.

*AJ Sanson can be reached at [asanson@alestlelive.com](mailto:asanson@alestlelive.com) or 650-3527.*

# Staying safe at SIUE

**LEXI CORTES**  
Alestle Opinion Editor

SIUE was voted the 21st safest campus in the country last year and police Lt. Kevin Schmoll said this year campus police will try to continue that trend.

Thirty-five sworn officers work in the Supporting Services building and, through a rotation, patrol 24 hours a day, even on

because he believes this is a class more female students should take.

"It is something that really empowers you," Murphy said. "Knowing that you can do these certain things, it makes you walk around at night more confident. You look like you know what you're doing and you aren't looked at as a target then. Anybody who's looking to do something like that normally, they



Photo by Rebehka Blake/Alestle

**Officer Adam Severit is one of 35 police officers that assures SIUE's campus remains the safest in the state.**

holidays.

Schmoll said their purpose is the "protection of property and everybody's safety on campus."

Graduating mechanical engineering major John McConnell of Belleville said he feels safe on campus after a run-in he had with police a few years ago.

"I was working down at Chick-Fil-A as a student worker and on one of our slow days, one of my coworkers decided to have some fun with the laser thermometer that we have by pointing it at various places on Center Court," McConnell said. "Next thing we knew, a police officer was walking up to us."

McConnell said the police officer very politely and simply asked them not to play with the laser pointer like that.

"He thought it looked like a pistol laser-sight," McConnell said. "He did not raise his voice. He did not threaten anyone with arrest. What it makes me feel is more comfortable about the way that police officers will use their own power."

Schmoll said SIUE Police have been using their power to promote safety by providing an escort service to accompany students, faculty and staff late at night.

"We'll escort somebody from their classroom to their car or from the car to the classroom or to any of the residence halls or Cougar Village," Schmoll said.

Police Sgt. Dan Murphy teaches an all-girls self-defense class every year on campus to promote safety as well.

"We are affiliated with R.A.D (Rape Aggression Defense)," Murphy said. "We offer that class approximately twice a year and it's free. A police officer teaches it. It's a week-long class. [It's] pretty intensive."

Murphy said he advertises the class anytime he gets a chance

pick out the weakest."

The class is 12 hours, broken up into four different class periods of three hours each. Murphy said in order to get through the whole course, the students have to attend at least the first nine hours.

"It just builds up over the three days," Murphy said. "The fourth day, which is optional for the girls, is where one of the instructors will put on a full padded suit from head to toe."

They run the women through scenarios and attack them in a controlled environment. The women are allowed to go all out and try to get away by using the techniques they have been shown over the previous three class periods.

"Where we usually do it is in one of the multifunction rooms in the residence halls," Murphy said. "That makes it convenient for most people too. We insist that the windows in there be covered because we only teach this to females and we don't want a male to find a way to defend what the girls are defending."

Murphy said the class is to teach women defensive skills, not how to "kill people."

"We're teaching people how to get out of a bad situation," Murphy said. "Once they have gotten themselves loose, they need to run from the situation. Our basic thing is like a shock and awe. Most men aren't expecting a woman to fight back. The shock is there and that might give them enough time to get away or alert somebody else to help them."

If a student should need to alert someone to help them while on campus, they could use one of the blue emergency phones placed around campus.

"The phones are for emergencies and non-emergencies," Schmoll said. "There's two but-

**POLICE/pg.17**

## GEMS from pg.10

methods, according to bartender Lauren Woolard.

"It offers something that nobody else does," Woolard said. "We have the only oven that exists anywhere around here that's anything like ours."

The 800 degree wood burning oven provides a unique wood fired taste that defines the restaurant's flavor quality and makes cooking and service speedy. Although the list of pizza combinations grows, according to Woolard, the present consumer favorite is the Wild Mushroom Pizza, wood fired with an elegant

"We're not a franchise; we're not a cliché..."

- Rafe Purdy

Annie's general manager

blend of wild mushrooms and a rich truffle oil.

Established in 2009, Peel has already made a name for itself on the local scale, attracting scores of customers on weekends and earning recognition from local magazines; an accomplishment

that Woolard said is due in part to Peel's pricing.

"We are very reasonably priced, with a very relaxed and little more of an upscale feel of a restaurant for a really good price," Woolard said. "Two people can come here, each get a small salad, split a pizza, and if you're not drinking, you can walk out of here for under \$20."

The local scene is bustling with great opportunities from which all students can benefit. There are many more hidden gems within the Edwardsville and Glen Carbon area, so if perusing is on the docket, you're sure to find something worthwhile.

*Courtney Hill can be reached at [chill@alestlelive.com](mailto:chill@alestlelive.com) or 650-3524. Follow Courtney @CHill824*

**VALUE CHECKING \$50**  
Open with this ad and receive

**ATM fees refunded** up to 12 per statement cycle

**FREE** Internet Banking

**FREE** Bill Pay

**FREE** Online Statements

**FREE** Mobile Banking

**No** Minimum Balance

**Earn Interest**

\$100 minimum required to open an account. One per customer. Offer expires June 30, 2012. MEMBER FDIC

**FNB First National Bank**

• BETHALTO - 618-377-9146  
• HOLIDAY SHORES - 618-656-5015  
• TROY - 618-667-9800  
• STAUNTON - 618-635-2234  
• LIVINGSTON - 618-637-2070  
• WORDEN - 618-459-7211  
• BENLD - 217-835-4384  
• HAMEL - 618-633-2265  
• MARYVILLE - 618-346-3600  
• MT. OLIVE - 217-999-2265

[www.fnbstaunton.com](http://www.fnbstaunton.com)

**alestlelive**  
where to get your news  
alton eastsaintlouisedwardsville

# New Science Building on the rise

Construction around campus continues through school year

**KARI WILLIAMS**  
Alestle Editor in Chief

From window replacements to building construction and renovation, SIUE is getting a make over.

### Science Building

Campus architect Rick Klein said construction for the Science Building is about 15 percent complete.

"Plans call for it to be completed next summer. We want it finished in time that we can move people into it so we can have classes there in the fall," Klein said.

The principle work that has been completed, according to Klein, is the building's foundation, underground plumbing and electrical services.

Vice Chancellor for Administrative Services Rich Walker said progress on the new science building is going well.

"You'll notice now the floor between the bottom level and the first level is being constructed and they're getting ready to start on the second level," Walker said.

Walker said once the new science building is completed, bids will start for the renovation work on the old building, which will most likely be in spring 2013.

"It'll probably take 18 months after that to complete the renovation. Some of that is dependent on the state of Illinois and when they release the funds for renovation," Walker said.

Klein said the new building will be like the original buildings on campus, meaning it will have a concrete frame.

"You have to support the entire

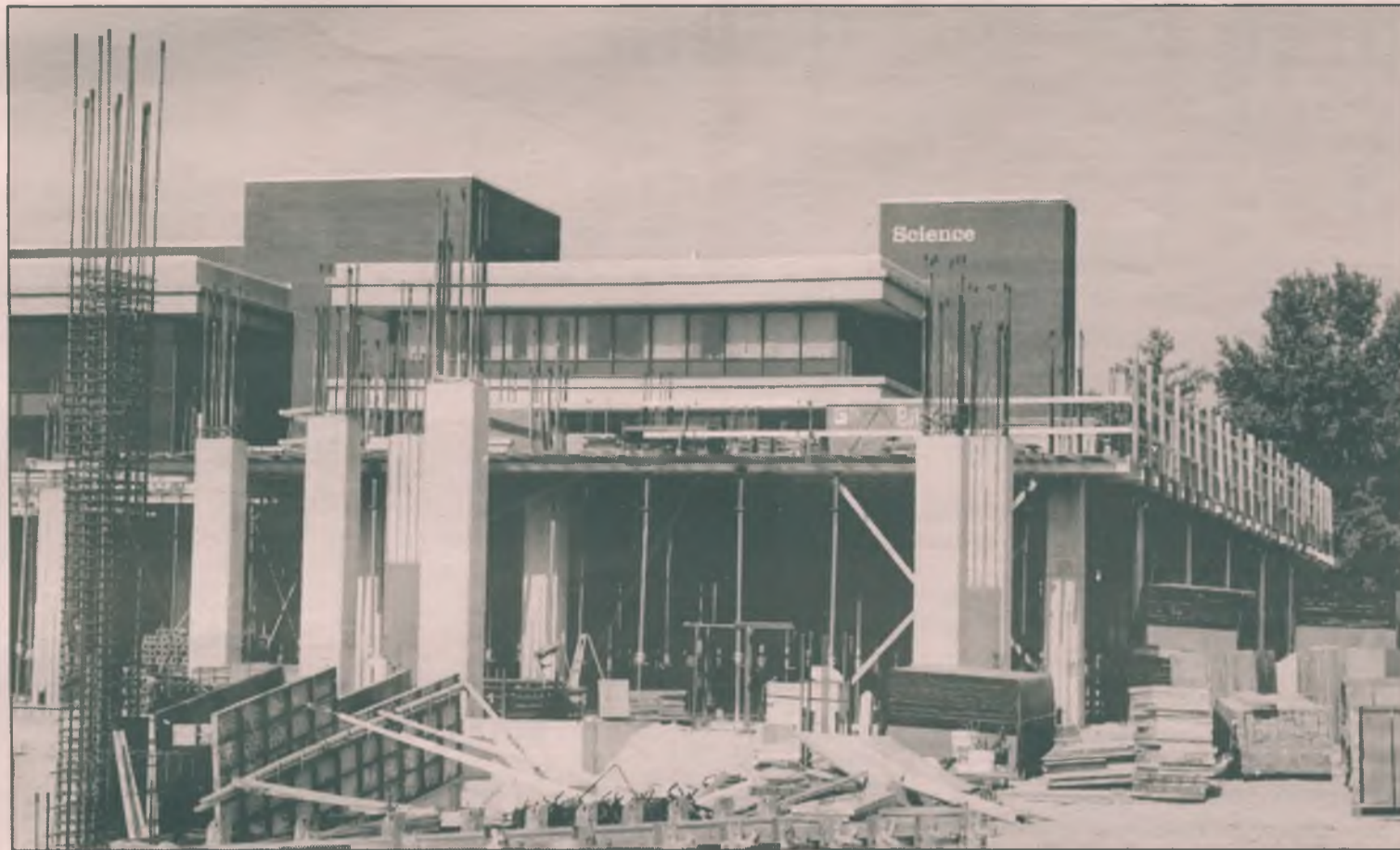


Photo by Rebehka Blake/Alestle

Science Building construction is about 15 percent complete, according to Campus Architect Rick Klein. The addition will house chemistry, biology and environmental sciences. Renovations on the current science building will not begin until the new building is completed.

floor because of the weight of the concrete, where typically you put up a steel frame and then you put metal deck down so you've only got a couple inches of concrete," Klein said. "Instead of [that], in this case, there are places where the concrete is 24 inches thick."

Once the new building is completed, the chemistry, biology and environmental science departments will move into the new building. That will free space in the existing building that can be used as temporary offices while the renovation work is occurring in the existing Science Building.

### Art & Design Expansion

The SIU Board of Trustees approved contracts for construction on the Art and Design building at the BOT meeting July 14.

Klein said the new Art and Design building is a separate structure about 30 feet from the existing building. The two buildings will be connected by a bridge.

"That project will start construction and probably won't see any actual physical work until probably late August, maybe mid August," Klein said.

A pre-construction meeting was held July 11 to go over basic rules and for the architect firm, Triver's Architects, to submit shop drawings.

"Those are drawings that tell us exactly what he's going to be putting in the building for every component of the building," Klein said. "Those are reviewed by the architect and once they're approved, they can begin to order materials."

Art and Design Department Chair John DenHouter said the new addition will house the art therapy, art history, art education, painting and drawing

departments.

The addition will be two stories, with the gallery on the first floor.

"The gallery ... will actually have glass walls so students walking around the west side of the building can look in and see the artwork on display," Klein said.

According to Klein, the construction will affect students who live in Evergreen Hall.

"We'll have to put in a temporary walk that will lead across around Circle Drive to the east and then they'll turn and go up through the parking lot," Klein said.

The reasons for the expansion include health and safety concerns and to bring the entire Art and Design faculty into one building.

"Currently, art therapy, art education and art design are all located in Alumni and Founders [Halls], so that staff is really separated from the rest of the Art Department," Klein said.

In summer 2013, DenHouter said the south side of the building

will undergo demolition and renovation, thus closing the sculpture, ceramics and metals studios for the summer.

### Window Replacements

Window replacements that began in the spring semester in Peck Hall are about 40 percent complete, according to Klein.

Peck Hall is the first building to have windows replaced as part of this project, and Klein said certain areas have to be completed by Aug. 22, when the fall semester begins.

"We will have the office wing and the east side of the classrooms finished by then so those people will not be disturbed anymore," Klein said. "Obviously they've had a rough summer."

The next building to get updates will be Dunham Hall, which will occur in the fall semester, Klein said.

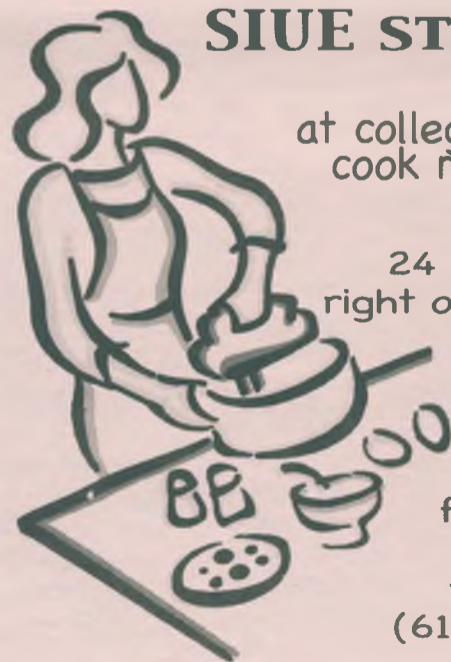
"Dunham is a project through the Capital Development Board, and they're processes tend

CONSTRUCTION/pg.17

## FIONA'S

146 N Main St Edwardsville, Illinois

WELCOME BACK SIUE STUDENTS

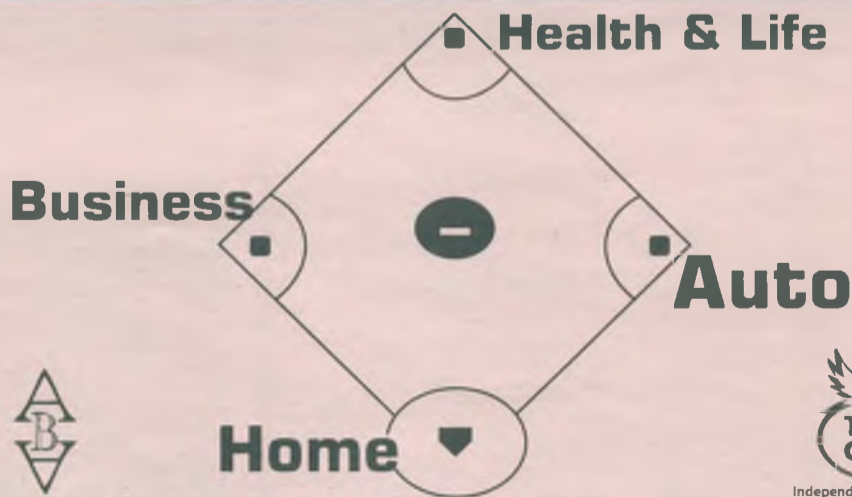


at college, mom can't cook meals for you

but...we can 24 hours a day right on main street Downtown Edwardsville

family food family restaurant (618) 659-8688

COVER ALL YOUR BASES



ASSURANCE BROKERS, LTD.  
618.692.9800 WWW.ASSURANCEBROKERS.COM

# 'Please walk on the grass'

SIUE gardens offer nature paths, landscapes for students, public

**COURTNEY HILL**  
Alestle Reporter

The fall 2011 semester is raging around the corner, complete with lectures and labs, tests and tutoring and the occasional overnight three-essay coffee binge marathon.

Needless to say school can be a bit stressful at times; but SIUE offers a peaceful escape from the stress on campus at The Gardens.

The Gardens is a botanical wonderland and offers a tranquil escape for students to relax, play, study or simply admire its beauty.

Dubbed a Signature Garden by the Missouri Botanical Garden based on its horticultural displays and maintenance, the 35-acre grounds located near Cougar Village is comprised of memorial gardens, sculptures and natural areas. A half-mile winding nature path connects several mini gardens that exude their own unique themes, giving The Gardens a lively personality to keep visitors intrigued.

Students and community members are urged not to stay confined to the path, according to The Gardens Grounds Coordinator Dan Mueller.

"Interact with the gardens," Mueller said. "We are a 'please walk on the grass' kind of place. We really want people to get off of the path, stretch out, take it easy... it's therapeutic."

The Gardens features large gazebo structures with mini



Photo by Rebehka Blake/Alestle

Students are encouraged to explore SIUE Gardens, which has mini garden landscapes, including Prairie Portal and The Lantern.

garden landscapes, like the Prairie Portal and The Lantern, and also highlights art objects, such as the Rita Hardy Wind Forest.

Larger constructions, such as the bridge over Turtle Pond, appeal to young children and families looking to feed the turtles, according to Mueller. Each structure

maintains both an aesthetic value as well as a functional value, which typically involves leisure; traits that Kyle Wallace, a student gardener and junior business administration major from Nashville, said are important.

"It sets it apart from other schools, and it is really nice to

walk around in," Wallace said. "It just makes a nice place for students to go and for anybody else to come."

According to Domanique Lucas, a student gardener and senior mass communications major from Chicago, the gazebo structures within The Gardens are used for events by the local community and beyond.

"We have weddings and events, like dinners, to gain the interest of the people," Lucas said. "We have events to unveil different gardens. It gives the students and the community the chance to come and enjoy the weather and see the different flowers."

According to Mueller, personal donations have allowed The Gardens to thrive.

"It's a non-for-profit... organization, and we are solely donor-funded," Mueller said. "We are funded through the [SIUE]

Foundation, so Alumni dues, part of them, come here to help us. We have targeted gifts from alumni and friends and visitors with which we install products and projects."

Looking to the future, administrators of The Gardens plan to hold a number of community events and many new features, including a natural amphitheater for concerts and educational programs, as well as a new natural garden "room" with fireplace for small gatherings.

And for those students with avid "green thumbs," or even those who would like some extra work, administrators welcome the help and hope for more student involvement in the near future.

The Gardens is a free-admission outlet that is open to the public.

Courtney Hill can be reached at [chill@alestlelive.com](mailto:chill@alestlelive.com) or 650-3527. Follow Courtney @CHill824

**PARKING** from pg.9

there'll be fewer parking spaces for employees and students," Vanzo said. "We have had to cut back on the number of green permits we are offering for sale. So, that is going to push some people into the blue or red lots."

To some students, like senior theater history, literature and criticism major Sara Fehrmann of St. Louis, parking services is merely a small nuisance.

"With the construction, it's more of an inconvenience right now. Especially this summer, it's

been hard since I can't park in Woodland so it makes it a further walk," Fehrmann said. "They're just doing their jobs though."

Vanzo has simple advice to those who wish to avoid parking citations.

"Buy a parking permit and park where that permit allows you to park and you'll never get a parking ticket," Vanzo said.

John Layton can be reached at [jlayton@alestlelive.com](mailto:jlayton@alestlelive.com) or 650-3527. Follow John @hmkammnckl.



**MOJO'S MUSIC**

Sales • Rentals • Lessons • Repairs

*Acoustic & Electric Guitars In All Price Ranges From Beginners To Professional*

**PA and Sound Equipment**

*Great Selection Of Drum Kits, Bongos & Congas*

*Free lessons with any new instrument purchase!*

- Large Selection of Print Music.
- Sound System Rentals by Day-Week-Month
- Band & Orchestra Instrument Rentals

**Ask for Your SIUE Student Discount**

**655-1600**

142 N Main St • Edwardsville, IL 62025

[www.mojosmusic.com](http://www.mojosmusic.com)

**Edwardsville's**

**Only Pro Music & Sound Shop**

























**CENTER** from pg.12

"That was something we did in the spring and we are anticipating on doing it again in the fall, but I'm not entirely sure yet," Verbais said.

Verbais said they want students to proofread ahead of time and then ask questions about the areas they are most concerned with.

"We'll talk to them about ways to improve their overall paper, strengths and weaknesses that they see, and then we'll narrow in on those specific passages that they wanted real help with," Verbais said.

English 100 class with the grammar section and the rhetoric section.

"It's a credit-bearing class if you come here to the Writing Center," Verbais said. "This is done on your own pace. There's not a set meeting time for the class."

The class is taken on the computers in the Writing Center. Students can use hint sheets as well as ask questions if they get stuck.

"It's very beneficial," Verbais said. "Just kind of strengthening and reinforcing some of those concepts that are forgotten because you learned them in third

Freemont, Neb., works as a tutor in the Math Resource Area. Dunham said he enjoys helping people and thinks he might want to teach someday.

"I have a good skill in math," Dunham said. "I thought one day I might like to be a teacher, so I thought I might try tutoring beforehand and I ended up enjoying it a lot."

Dunham said tutoring is rewarding because he gets to see students reach an understanding of something they would not have been able to otherwise.

"Just knowing that I'm helping someone further their education [is the best part]," Dunham said. "Even if they only have to take one math class, that might have been something that stopped them from graduating. I don't want to see that. I want to see people continue on, not be held back by something."

Besides tutoring, the Math Resource Area also offers calculators for students to check out if they show their ID. Wlodarek said they also have solution manuals for use in the lab.

"We also have hours in the residence halls Monday, Tuesday and Wednesday night," Wlodarek said. "The tutor actually goes over there and we change location of halls each night. It seems like it helps the students who live in the residence halls."

Testing Services, the Writing Center and the Math Resource Area are all located in the Academic Achievement Center of the Student Success Center.

*Lexi Cortes can be reached at [acortes@alestlelive.com](mailto:acortes@alestlelive.com) or 650-3524. Follow Lexi @Lexi\_Cortes*

**"Just knowing that I'm helping someone further their education [is the best part]..."**

- Sam Dunham

Senior electrical engineering major

"The first couple of weeks you could probably walk in and get an appointment right then," Verbais said. "After about week three, we really start getting full."

The Writing Center may offer workshops for students on how to format a paper in APA and MLA styles, avoiding plagiarism and how to proofread their own work.

"In the fall, we will publicize any workshops that will be offered on our website," Verbais said. "We look for suggestions from students on what they're looking for and faculty as well."

Another opportunity offered by the Writing Center is the

or fourth grade."

Math Resource Area Coordinator Mary Lou Wlodarek said the MRA can also greatly help students in their classes as well as in the future.

"It helps build confidence in the students," Wlodarek said. "It's a safe place to ask questions."

Wlodarek said the Math Resource Area has become "one-stop shopping" since September because students can come in on a walk-in basis to receive assistance with math and science.

Two math and two science tutors are typically on duty. Senior electrical engineering major Sam Dunham of

**BARS** from pg.10

**"We want to keep growing our business and make it as good as we can..."**

- Timmy Bauer

Part-owner of Big Daddy's

equally diverse, Big Daddy's may not have as much of a laid back crowd as their scene is more club-like on Thursday nights. Part-owner Timmy Bauer was part of a group that bought the bar when it was called the Jury Room three years ago this August.

"We tell everyone that we make it open for everyone," Bauer said. "It's not just a college bar; for lunch you'll see college kids, judges and laborers. The later it gets the younger it gets."

Following suit, Big Daddy's big night is Thursday night as well with \$2 well drinks and \$2 domestic bottles. Since the bar became Big Daddy's, several changes have occurred at the establishment including revamping the patio last summer.

"We're going to continue to put money back into the business," Bauer said. "The biggest thing we did when we took over was expand the patio, it's one of our cornerstones. We want to keep growing our business and make it as good as we can."

Bauer said even with much of SIUE's students gone for the summer, his bar still does fairly well.

"We definitely see an increase when students come back, but we're pretty steady year round," Bauer said. "We don't die during the summer months, we even increase a little during the summer months. When kids get back it gets interesting, new blood and a new life so we're always

trying to do things different." Bauer said Big Daddy's recently started hosting karaoke on Monday nights.

"We strive for customer service, you don't always have to be the cheapest in town," Bauer said. "We want to provide an element people can't find anywhere else, we try to be a little of something for everybody."

Away from the downtown bar scene is another popular destination for SIUE students, Shenanigan's Bar and Grill off state route 157. A full restaurant by day and bar by night, the establishment also tries to cater to the needs of their patrons, according to Manager Sean Mead.

"We're a blend of everything," Mead said. "Late night Thursdays can be the club-type atmosphere, but at the same time because the building's so big you can chill out at a booth on one side."

Mead said with the restaurant-type setting, Shenanigan's is a little more conservative on nights that most people generally do not go out.

"During the week we're a little more laid back," Mead said. "But if it gets to the point where people want to party we can convert that for them by moving tables out of the way to get the dance floor going. We got the DJ booth to mix up the music too."

*AJ Sanson can be reached at [asanson@alestlelive.com](mailto:asanson@alestlelive.com) or 650-3527. Follow AJ @AJ\_Sanson*

## Check us out!

### Expand your Horizons through the Student Leadership Development Program



*We offer*

#### Leadership Modules

Presented by

Community, government, business leaders and University Faculty and Staff

#### Volunteer Service

Gain invaluable insight and learning experience about surrounding communities

#### IMAGE

Learn etiquette, interviewing strategies, and job search techniques

#### Seven Habits of Highly Effective People®

Enhance personal development skills and learn to organize and prioritize through Stephen Covey's program

#### Get the details - attend SLDP Orientation

Student Success Center, Room 1202

**August 23, 2011 - 2:00 & 6:00 PM**

**August 24, September 7 & 14 - 4:00 PM**

For the SLDP Calendar, visit the website at [www.siu.edu/kimmel/sldp](http://www.siu.edu/kimmel/sldp)



245 S. Buchanan Street  
Edwardsville, IL 62025

[www.anniesfrozencustard.com](http://www.anniesfrozencustard.com)

**618-656-0289**

**10% off purchase  
with student ID**

Annie's is **YOUR** hometown  
frozen custard shop



**POLICE** from pg.13

ons on there, one's for assistance and one's for emergencies. A non-emergency would be like if you locked your keys in your car [or] you need a jump start."

Schmoll said if someone is being attacked or even having a health issue and they cannot speak, the dispatcher will still know the location and can then alert the officers, who can typically respond within a couple minutes.

Other services offered include an engraver that students can check out to engrave their electronics so police can verify stolen property in case of theft.

"We have a lot of theft calls," Schmoll said. "Our biggest issue is theft, and a lot of the thefts that happen could have been avoided."

Schmoll advises students to lock their car doors and keep their windows rolled up because he has seen students who had their parking hangtags stolen. He also said not to leave personal property unattended, such as a laptop in the library.

"When you're at your room in your residence hall, don't leave your door open or unlocked when you walk down the hallway to visit your friend," Schmoll said. "Always lock your door."

*Lexi Cortes can be reached at  
acortes@alestlelive.com or 650-3524.  
Follow Lexi @Lexi\_Cortes*

**GREEK** from pg.6

sophomore to qualify for potential enrollment.

"As far as popularity goes, membership numbers can be misleading," Davenport said. "None of the NPHC organizations are nearly as large in numbers as some of the other organizations. For example, there are only 15 Alpha Phi Alphas. When they throw a party lots of people come out."

Sigma Tau Gamma made its debut on campus last fall. Senior mass communications major Jeremy Madison said he had never considered joining one of the other fraternities, but Sigma Tau was a perfect fit.

"I wanted the opportunity to make what I wanted in the chapter," Madison said. "I also wanted to break down the stereotype of typical frat."

There are also business oriented and honorary Greek organizations on campus like business frat Delta Sigma Pi. Senior human resource management major Jeremy Cartledge said joining Delta Sigma Pi has helped him socially and professionally.

"I have become more involved on campus and improved my professionalism skills," Cartledge said. "Joining my frat is one of the best decisions I have made."

There is not any Greek housing on campus. Davenport said this increases the difficulty of organizing events for the members.

"In my fraternity we had

housing on campus. It was just a place we could go hang out," Davenport said. "You have to plan more and members have to make greater efforts to come to events [without Greek housing]."

Davenport said becoming more socially acclimated on campus is one of the several short-term benefits to joining a fraternity or sorority.

"You are going to meet a lot more people than you would on your own," Davenport said. "Not only do you meet the people in your own organization, you end up meeting most of the other students in Greek organizations."

Davenport said Greek students often join other student organizations on campus instead of letting the fraternity or sorority dominate their time on campus.

"Most student organizations have one sole function they focus on. Fraternities and sororities do a lot of different things. In a lot of aspects they are a general student organization," Davenport said. They do social stuff but they also do intramurals, community service and leadership programming."

Greek Life is not something that ends for its members upon graduation. It is something many members choose to be a part of long after graduation.

"You can be involved with it as an alum," Davenport said. "You can be involved with it if you're 88 years old if you want to be."

*Jason Frazier can be reached at  
jfrazier@alestlelive.com or 650-3527.  
Follow Jason @Jfraz85*

**CONSTRUCTION** from pg.14

"We're going to add a vestibule to make a more obvious entry on the south side of [Rendleman Hall]...

- Timmy Bauer

Part-owner of Big Daddy's

to be a little slower, but the current plan calls for bidding and probably now mid-fall they'll start with the lobby area, replacing the glass," Klein said.

After Dunham Hall, Rendleman will be updated. According to Klein, plans are to bid the project in spring and begin work in summer. Windows are being replaced and vestibules will be added.

"We will be adding a vestibule on the north entrance [of Dunham Hall," Klein said. "Then we're going to add a vestibule to make a more obvious entry on the south side of the building."

**Other Projects**

Klein said there are other projects "in the drawing stage" that will probably be bid on early in the fall semester, such as an addition for the Engineering Building. Klein said they hope for construction to start early in the spring semester.

"It's going to be primarily classrooms with some offices," Klein said. "It'll be a three story addition, the third floor will be principally offices and first and second floor will be classroom spaces."

According to Walker, a \$14.2 million budget was approved for

the Engineering Building.

The BOT also approved construction contracts for an addition to the Vadalabene Center.

"It will build offices for athletics and will allow kinesiology to expand their area and once the athletics vacate and that's being paid for by a \$4.2 million gift by the Charles and Mary Lukas family," Walker said.

A facility for softball is in the works as well, Klein said, and they are calling it a hitting building.

"It'll be just behind the softball stadium, just west of it. It'll be used by the team for indoor practice during bad weather," Klein said. "They can do some infield, they'll have some batting cages, [and] some pitching mounds so the pitchers can practice. It's about an \$800,000 project."

Klein said the project is waiting for bids and the plan is for it to be completed before Christmas.

The Cougar Business Resource Center within Founders Hall will be open in August as well, according to Walker.

*Kari Williams can be reached at  
kwilliams@alestlelive.com or 650-3530.  
Follow Kari @Kari\_Williams*

alestlelive.com

# Career Development Center

Image Seminar      Resume Preparation

Career Class AD 117      Mock Interviews

On-Campus Interviews      Co-ops/Internships

Federal Employment      Job Search

Assessments      Career Counseling

Networking      Professional Attire

## 2011 Career Fair Dates

CAS/Business : October 5, 10 a.m. — 2 p.m.

Engineering : October 6, 10 a.m. — 2 p.m.

Health Careers : November 14, 3 — 6 p.m.

0281 Student Success Center 618-650-3708 careerdevelopment@siue.edu  
www.siue.edu/careerdevelopmentcenter

## The Cougar Creed

As a member of the SIUE community I acknowledge and accept my responsibility in creating an environment that supports the pursuit of knowledge.

I will uphold high standards, in both my personal and academic endeavors, striving to achieve success while making a positive impact on the University community.

I will demonstrate a concern for others and respect their right to a civil environment. I recognize that higher education is a privilege and will seek to make the most of this opportunity.



**C**ommitted to the SIUE community; its past, present and future.

**O**pen to other points of view.

**U**nited in school spirit and pride.

**G**rateful for the privilege and the opportunities of higher education.

**A**ccepting of classmates as colleagues and equals.

**R**espectful of the rights of others.

# BACK TO SCHOOL SALE

12" PILLOW TOP

- FREE FOUNDATION
- FREE MEMORY FOAM PILLOW
- FREE 800 CT. SHEETS

Not Valid With Any Other Offer

FULL \$399  
QUEEN \$449

MATTRESS SOURCE

www.mattresssourcestl.com  
(618) 656-0100

Check out the site  
for **YOUNG ADULTS**

[www.scu.onyourway.com](http://www.scu.onyourway.com)

On Your Way  
Get there.



Enter to win valuable monthly prizes like a  
**laptop, Wii, HDTV** and more!

It's all FREE... no catches!  
(seriously)

## New Account Special!

Open a Savings and Checking Account

& get \$50\* when you sign up for debit card

\*If savings account is closed within 365 days, initial deposit remains at Scott Credit Union. Must open savings, checking, and debit card to qualify. Offer expires 12/31/11.

AL EST 11

# SCOTT CREDIT UNION

Visit [www.scu.org](http://www.scu.org)  
for a list of branch locations



# The ID that saves money

**LEXI CORTES**  
Alestle Opinion Editor

Last year, 45 businesses in Edwardsville offered a discount for students and that number continues to grow.

Students simply need to show a valid student ID to receive a price cut. Among the businesses are 54th Street Grill and Bar, Rapid Lube, Verizon Wireless, Hair Saloon for Men and more.

General manager of 54th Street Grill and Bar Nick Heckerson said they have been offering their discount of 10 percent off on all food purchases for about a year and a half.

Heckerson said 54th Street first decided to offer the discount when the school contacted them.

"We're pretty good about working with [the] community on different things," Heckerson said. "It kind of helps the students out too."

Heckerson said he saw many of students coming in before they offered the discount, but even more have been coming in since then. He said it seems like most students do not know they have the discount, though.

"A lot of times one student will know about it and the others are surprised," Heckerson said. "It seems like the program hasn't been pushed very well."

Rapid Lube Store Manager Brad Whitlock said the staff will often remind students about the discount when they come in.

"I would say almost 50 percent of our clientele are just SIUE students," Whitlock said. "We see the parking tags that are on the rearview mirrors and we like to go and ask if they are a student and if they don't have any other discounts, we can offer that."

The discount offered at Rapid Lube is \$5 off full-service and \$3 off mini-service.

"I've been here for 10 years and I've been [offering this discount] since day one," Whitlock said. "The owner always says when someone is going to school to try and better

themselves, they could always use a little bit of help."

Manager of Verizon Wireless Stacey Vaughn said they offer a discount because they want to promote SIUE, which is a big part of the Edwardsville community.

Verizon Wireless offers 25 percent off on accessories in the store.

"We have been offering the discount for at least three years," Vaughn said. "I don't think they all know about it. We have to tell them."

Manager of Hair Saloon for Men Tammy Bizaillion said they tell as many people as they can about the discount.

For a regular men's haircut they offer a discount of 25 percent, so SIUE students who bring their ID can get a regular haircut for only \$15. They have been offering this discount since they opened in 2007.

"We love our students," Bizaillion said. "We get guys that'll come in and bring their whole dorm with them."

Bizaillion said when they first started offering the discount, it was only on Tuesdays and Thursday, but because of the response from students, they now offer it every day.

"They come in and bring their friends," Bizaillion said. "The word of mouth is really good for us."

The businesses benefit from the increased traffic of SIUE students and the students get to save a little money. The list of businesses grows every year, but some of the other businesses offering the discount this year include: AT&T, Blimpie's Subs, China King, Dairy Queen, El Maguey, Fazoli's, Great Clips, Hollywood Tan, La Fonda, Midas, Nailhaus, Our Health Club & Spa, Play N Trade Games, Quiznos, Reality Salon & Spa, Tha Grind and UPS Store.

An updated list can be found in the Kimmel Leadership Center for all businesses offering the discount in fall 2011.

*Lexi Cortes can be reached at acortes@alestlelive.com or 650-3527. Follow Lexi @Lexi\_Cortes*



Graphic by Rebecka Blake/Alestle

## Businesses offering the Cougar Discount

- |                            |                         |                             |
|----------------------------|-------------------------|-----------------------------|
| 1) 54th Street Bar & Grill | 16) Curves              | 32) Our Health Club and Spa |
| 2) A.M.P Salon             | 17) Dairy Queen         | 33) Papa John's             |
| 3) Annie's Frozen Custard  | 18) El Maguey           | 34) Play N Trade            |
| 4) AT&T                    | 19) Fazoli's            | 35) Quizno's                |
| 5) Avon on Main            | 20) Great Clips         | 36) Rapid Lube              |
| 6) Aztec & Salon           | 21) Hair Salon for Men  | 37) Reality Salon & Spa     |
| 7) Bella Milano            | 22) Heroic Adventures   | 38) The Cyclery             |
| 8) Blimpie Subs & Salads   | 23) Hollywood Tan       | 39) The Grind               |
| 9) Buffet City             | 24) Hometown Comics     | 40) The Pasta House         |
| 10) Cafe Avanti            | 25) Hudson Jewelers     | 41) The Tan Company         |
| 11) China King             | 26) La Fonda            | 42) The UPS Store           |
| 12) Clarkson Eyecare       | 27) Los Tres Amigos     | 43) Verizon Wireless        |
| 13) Cold Stone Creamery    | 28) Midas               | 44) China Restaurant        |
| 14) Culver's               | 29) Nailhaus            |                             |
| 15) The Cup                | 30) NORI Japanese Grill |                             |
|                            | 31) Oriental Spoon      |                             |

# At your service.

Bus service on and off campus.

For details call 931-7433 or visit [www.mct.org](http://www.mct.org)

NOW HIRING

Edwardsville McKay NAPA Auto Parts

Accepting Applications For Two Positions

- \*Part-Time Counter/Delivery Person  
AUTOMOTIVE EXPERIENCE REQUIRED
- \*Part-Time Delivery Person

Apply in person  
McKay NAPA Auto Parts  
112-114 South Main Street  
Edwardsville (No Phone Calls Please)

---

DELIVERY | DINE-IN | CARRY OUT

618.655.9400 618.655.9401

Mon-4pm-9pm  
Tu-Thr 11am-9pm Fri 11am-10pm  
Sat 4pm-10pm Sun 4pm-9pm

EAT AT JOE'S  
More Variety. High Quality.

4 club centre court, suite k edwardsville, illinois 62025

\$2 Bottles Everyday!

10% OFF BILL

Now open Mondays 4 - 9

# Dining Services updates menu items

**LEXI CORTES**

Alestle Opinion Editor

Renovations and additions, including hot wings and ice cream, will soon be seen in Cougar Den for the 2011-12 school year.

Morris University Center Director Joseph Pearson said renovations to Taco Bell and Pizza Hut will include extended menus, Freshens will be changed to an ice cream station and a new labeling system will be put into place for students with dietary needs and allergies.

"Pizza Hut and Taco Bell are currently under renovation," Pearson said. "That probably won't be done until mid-September."

Pearson said Dining Services is always happy to respond to students' requests and they did receive some feedback from students about wanting a Wing Street added to the menu at Pizza Hut.

"When we do our licensed concepts like Pizza Hut, Taco Bell, Starbucks, Auntie Anne's and Chick-Fil-A, typically every five to 10 years they require us to do kind of a make-over," Pearson said. "They will be replacing the furniture in Cougar Den as well as part of the project."

Students may have a more difficult time bringing hot wings to class than they would a personal-pan pizza.

"Hopefully they have enough napkins," Pearson said.

Pearson said when they noticed a decline in sales at the Freshens in the Morris University Center, they started asking students what they would like to see take its place.

"[Freshens] will be going away in the fall," Pearson said. "In its place will be an ice cream treat concept. We sell a lot more hand dipped ice cream than smoothies."

Another new project for the fall will be the labeling system to help students who have food



Photo by Derrick Hawkins/Alestle

**Dining Services has started updating its menu to include vegetarian and vegan options as well as adding Wing Street to Pizza Hut and adding more options to the Taco Bell menu.**

allergies or particular dietary needs.

"The people at Dining Services are always happy to meet with the students who have special needs," Pearson said. "They just need to talk with our Dining Services director or our production manager and they're located down in our Dining Services area."

Something that is not new to Dining Services is the discount offered to students who live on campus.

"There [are] three residence halls, Woodland, Prairie and Bluff, where a meal plan is required," Pearson said. "Part of that meal plan is called our 60-40 plan."

Pearson said 60 percent of the meal plan cost covers over-head, such as utilities, staffing and equipment, while 40 percent covers the food costs. A student who is on this meal plan is charged at 40 percent of the retail cost.

Sophomore Dan Chan of Chicago said he was on the 60-40 meal plan his freshman year and

took advantage of the discount.

"I lived at Prairie Hall so I was right across from the MUC," Chan said. "I ate more [when I had the discount] because I could afford it then."

Students, with or without a meal plan, can enjoy many different options at Center Court, which includes the Grill, Deli/Panini, the Wok, Entrees and Chick-Fil-A.

Pearson said Dining Services also tries to offer healthy alternatives at every location so students have that choice, too.

"Down at Center Court, we have a grab-and-go station, which

is typically yogurt parfaits, fresh fruit, sandwiches, salads and we also have a salad bar," Pearson said.

Senior psychology major Kristy Kelge of Springfield said she does not think there are enough healthy options.

"They have a salad bar, but other than that, there's nothing for people who are really interested in eating healthy, especially late at night," Kelge said.

Kelge said that is the biggest problem and she would like to see Dining Services offer more healthy choices later at night for people who study in the library or have night classes.

Pearson said Dining Services receives requests like this all the time. They have started offering vegetarian and vegan options at every meal because of requests they have received in the past.

"We actually want students to let us know what they want to have," Pearson said. "If we can bring it in we typically do. We'll try something out and if other students like it then we'll usually keep it in our rotation."

One way students can give Dining Services feedback is on the napkin board where students can write comments on napkins and leave them up on a pin board. The napkin board is located at the bottom of the main stairs on the left. Students can also go to [www.siue.edu/muc/dining.shtml](http://www.siue.edu/muc/dining.shtml) and leave feedback.

Chan said he has used the napkin board to post comments for Dining Services in the past.

"The day before April Fool's they closed early so I asked 'why did you close early?' They said they had to restock," Chan said. "They posted up responses really quick, which I really enjoyed."

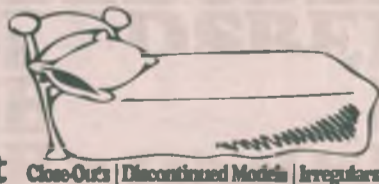
Pearson said they get a lot of positive feedback so they know what foods the students would like to see return again.

"With food, you're never going to please everyone all the time," Pearson said. "We try really hard to meet everyone's needs and we try really hard to have enough of a mix where people are going to be happy with what we have."

*Lexi Cortes can be reached at [acortes@alestlelive.com](mailto:acortes@alestlelive.com) or 650-3527. Follow Lexi @Lexi\_Cortes*

**BEDS  
BEDS  
BEDS**

**Mattress  
Factory  
Outlet**



Close-Outs | Discontinued Models | Irregulars

**Home of the \$195.00**

**Queen Pillow-Top Set**

**Tempur-pedic Memory Foam  
Queen Set \$475.00**

**618-345-5544 Est. 2004**  
New Location 607 RT. 159 Collinsville (next to shop 'n' save)

# Buffet City

INTERNATIONAL RESTAURANT

**Delicious Chinese, American,  
Japanese & Italian Food  
Eat in or take out**

**Sushi Bar and Mongolian BBQ Everyday**

Over 200 items to choose from!

*10% off individual meal  
if you show your SIUE ID card*

122 South Buchanan St.  
Edwardsville, IL 62025

**(618) 692-6888**

Open 7 days a week

Mon. - Sun. 10:30am - 9:30pm

Across from the Edwardsville Library and Park  
in Downtown Edwardsville



Photo by Michelle Beard/Alestle  
**Soulard Farmer's Market is one of many St. Louis getaways for college students. The market is open Wednesday through Saturday.**

# Making St. Louis your playground

**LINDSEY OYLER**  
 Alestle Copy Editor

St. Louis is the place for bicycles, the Cardinals and well, criminal acts according to rankings done by Morgan Quitno, a research company naming St. Louis the "most dangerous city" in 2010.

However, if mugging old ladies on the sidewalk isn't your bag, then feel free to explore the other, more creative and guilt-free attractions of the city while you're away from campus.

When it comes to entertainment and restaurants, no place does it better than Eclipse on the Loop. Their gastronomy-based concept shows through their diverse dishes and a galaxy-themed environment. They show pride in their "creative cosmic cuisine," according to their website.

Reviewers on opentable.com said the restaurant is "eclectic to say the least" and "a nice experience."

There are breakfast, lunch and dinner hours, starting at 6:30 a.m., 11:00 a.m. and 4:00 p.m. respectively. However, the rooftop terrace provides for late night dining with a twist. The galaxy theme carries over under the actual stars until 2 a.m.

Also in the area, the City Museum, on 701 N. 15th street, is an obvious stop for kids, with its mazes and sculptures. The entire building seems to be out of a fantasy book.

However, the adults who tag along seem to stay just as entertained with the architecture and aesthetics. Even SIUE students seem to be just as attracted as their younger counterparts in the intertwined tubes and passages throughout the gymnasium.

The museum is regularly open from 9 a.m. to 5 p.m. on weekdays. But on the weekends, you can see the venue in a completely different way.



Lights go out and flashlights click on at 10 p.m. on Friday and Saturday nights.

The museum provides toy flashlights to those who have entry, but you are welcome to bring your own along.

And now, the City Museum is home to the Balcony, which features vintage clothing shopping and even a coffee shop, both open Thursday from noon to 8 p.m., Friday and Saturday from 9 a.m. to 1 a.m. and Sunday from 11 a.m. to 5 p.m.

When the sun comes up, the pathways at 730 Carroll Street become the main stage of events, where people meet at the Soulard Farmer's Market.

Christie Schweiger, owner of Schweiger's Produce, said the Soulard Farmer's Market holds a financial appeal to college students who want fresh food.

"It's good for college students if you want such a discount, you come here and can save a lot of money if you're pinching pennies," Schweiger said. "It's really entertaining, especially on Saturdays. It's always packed and there are so many people."

The market is open Wednesday - Saturday and hours of operation can be found at [soulardmarket.com](http://soulardmarket.com).

If none of these events grab your attention, you can always float away from St. Louis to the Great Forest Park Balloon Race.

Admission is free for the hot air balloon event and there is a photography contest after. Coolers are allowed so you can bring food and drinks with a group to watch the show on Sept. 17.

Lindsay Oyler can be reached at [loyler@alestlive.com](mailto:loyler@alestlive.com) or 650-3527. Follow Lindsay @LindsayRockstar

## ACHIEVEMENT: STAYING ON TOP OF YOUR CLASSES AND YOUR BUDGET

### MANAGING YOUR MONEY AT SCHOOL JUST BECAME A LOT EASIER.

With Virtual Wallet<sup>SM</sup> Student by PNC, you can see all your money in one place, so you know what's for bills, what's saved and what's free to spend. Helpful tools like Danger Days, a weekly Calendar and Parent Alerts take the stress out of keeping track of your finances, so you can focus on other things. And with free Mobile and Text Message Banking, plus PNC ATMs near campus, there's no easier way to access and manage your money at school. To open up an account today, stop by the PNC Edwardsville Branch.



Be sure to stop by.

**PNC Edwardsville Branch**  
 6650 Edwardsville Crossing Drive  
 (in front of Dierbergs\*)  
 Edwardsville

Call: 618-692-8140

### Great Hours

Lobby: M-Th 9-5 • F 9-6 • Sat 9-12  
 Drive-Thru: M-Th 8:30-5:30  
 F 8:30-6 • Sat 9-12



©2011 The PNC Financial Services Group, Inc. All rights reserved. PNC Bank, National Association. Member FDIC [11133]  
 ACHIEVEMENT<sup>SM</sup> & Green Branch<sup>SM</sup> are registered trademarks of The PNC Financial Services Group, Inc.

## WILD Country

**WED: Get in FREE w/ College ID**

for the taping of St. Louis Country TV Show  
 \$2 Coors Lt., Cruzan Rum Bucket Special, \$1.50 Shot Bar

**THU: No Cover after 9PM**

\$2 Rail drinks, \$1.50 Natural Lt.  
 Foosball Tournament w/cash prizes  
 Open Dancefloor w/ DanceMix/Variety Music

**Live Music**  
 Every Friday & Saturday Night  
 Friday Night \$ Longnecks!  
 Saturday \$4.50 Pitchers

COME HIDE THE MECHANICAL BULL  
 THE 1ST WEEKEND OF EVERY MONTH

**GET WILD!**

(618)346-6775 18+

"The Later it Gets, the Wilder it Gets!"

Rt. 157 to Collinsville. Turn at Union Planter's Bank to 17 Gateway Dr

# Welcome Back Students From *Hollywood* ★ *Tan*

**New Customers:  
First Visit Free!**

**30 Days  
for \$25**

**One  
Week  
\$9.99**

**8 Tans  
for  
\$19.99**

**Come  
Try our  
NEW  
Mystic HD!**

**FIND US ON FACEBOOK!**

**(618)656-8255**

23 Junction Drive, Glen Carbon (in front of Wal-Mart)

# *Hollywood* ★ *Tan*

[www.hollywoodtanco.com](http://www.hollywoodtanco.com)



## Fast Facts

**0.98**

Goals scored against the Cougars per game in men's soccer last season.

**3**

Men's basketball games in overtime last season. The Cougars were 1-2, defeating Kennesaw State at the Vadalabene Center for SIUE's first home win against a D-I team.

**4**

Rookie volleyball coach Leah Johnson is the fourth head coach in program history.

**11**

Teams in the Ohio Valley Conference. Will increase to 12 when Belmont joins in 2012.

**17**

NCAA National Championships. 16 are at the D-II level.

**33**

SIUE has had 33 All-Americans in men's soccer.

**40**

Vadalabene Center record for points in a game by an SIUE women's basketball player. Misi Clark did it in 2000.

**45**

Men's record for points in a game at the Vadalabene Center, held by Jason Holmes and set in 1993.

**69**

Janece Freiderich holds the record for most career goals for a women's soccer player. She scored 69 between 1995-98.

**77-3**

The men's basketball program's record when scoring 100 points or more.

**828**

Career wins for softball Head Coach Sandy Montgomery.

**1,001**

Career wins by baseball Head Coach Gary Collins, good for 54th all-time in college baseball.

**1979**

The year the SIUE men's soccer team won the Division I National Championship, defeating Clemson 3-2.



The East Siders, a subgroup of the Red Storm, which is the official student section of SIUE athletics, gets crazy on the sidelines of Ralph Korte Stadium during the men's soccer homecoming game against Bradley last year.

Photo by Michelle Beard/Alestle



## has big ideas

**ALLAN LEWIS**  
Alestle Sports Editor

Over the past two years, Felix Burkhart, a senior from Edwardsville, has been charged with the task of taking an old tradition at SIUE, the Red Storm, and evolving it to fit the new tradition SIUE athletics are trying to build.

The Red Storm is the official student section of SIUE athletics, and goes further than just supporting men's and women's basketball. The Red Storm tries to make its presence felt at men's soccer games through its alter ego, the East Siders, as well as softball, baseball and volleyball contests.

The Red Storm has had a long history at SIUE.

"I have talked to alumni and the guys who are in the varsity room at basketball games and they said the Red Storm existed in the '70s," Burkhart said.

Burkhart has modest expectations for the fan base in general, but wants students to get excited and have pride in attending SIUE.

"The expectation is to have a solid core of 30 guys show up to every game, cheer like crazy and paint up," Burkhart said. "It all depends on how well the teams are doing, but we expect more early in the seasons."

For those making their way to a men's basketball game at the Vadalabene Center, especially one against a well-known opponent, the Red Storm is not hard to find. Sometimes they are painted red, but more often than not, they are located on the baseline beneath the south basket.

Burkhart wants recognition of his group to grow, along with the university's athletic programs.

"We want to make the Red

Storm a symbol of pride," Burkhart said. "When you mention SIUE, we want you think of the Red Storm. We promote the image of excellence and Cougar pride."

On the sidelines of Ralph Korte Stadium for soccer games, the East Siders along with the Red Storm made their presence felt in 2010. The homecoming game against Bradley drew more than 3,000 fans, many of which were outside the stadium gates. They tailgated, drank and watched the game atop parked vehicles. When the Cougars put the game away in overtime, car horns and vuvuzelas sounded to signify a Cougar win.

It is that atmosphere Burkhart hopes to top Sept. 19 when the Cougars host Evansville for homecoming.

"I am expecting well over 3,000 students, while last year was over 3,200 people," Burkhart said. "People love to tailgate and homecoming will be a blast. The east side exploded last year, and we have capitalized on that."

The Red Storm has many incentives in place for students wishing to support the Cougars. Students will receive a free T-shirt for attending two games next season in any sport. The group will have theme nights at many basketball games, similar to the "whiteout game" against Murray State last year. Students wore free white Red Storm T-shirts.

While Burkhart is excited for soccer season to get started, he is most excited about the upcoming basketball season.

"Soccer has been our strong suit, and soccer will continue to improve in the future," Burkhart said. "Basketball is just waiting to explode. The whiteout game was the highlight of the year for me, at least last year. During the week, I

heard people I didn't even know say 'I wish I was at that game' or 'had a great time seeing that game,' and that is what we are looking for down the road."

Men's basketball Head Coach Lennox Forrester said the added strength from the Red Storm helped.

"They did a tremendous job with that and our guys fed off of it, which means a lot," Forrester said. "Seeing them come out and give the team that kind of support gives us that extra oomph."

In order to accomplish those goals, Burkhart said the Red Storm will work closely with the residence halls to notify freshmen of upcoming games, along with the continuation of its red light campaign from last year.

"We are connecting with housing and RHA on a weekly basis, so if you live in housing you should know what is going on," Burkhart said. "We are open to all co-sponsorships, so if a group wants to come in and sponsor a theme night and set up a table at a game they are welcome to work with us to do that."

The Red Storm has developed two new committees for students this year; recon and tactical.

"Recon basically means researching every team before we play them at home or if we travel so we can heckle them," Burkhart said. "Tactical needed its own committee as far as putting up flyers and bulletins around campus and painting the rock. We are getting a stencil for it."

Burkhart said he has earned a certain level of respect through running the Red Storm, and hopes SIUE sports can obtain the same on a national level in the upcoming years.

"The biggest impact I have seen, for me personally, is the



respect I get from athletes and coaches alike," Burkhart said. "They have thanked me for what I have done and I am on a first-name basis with all of the coaches and most of the athletes. They care that you care and later down the road I hope I can inspire someone to take over and run with the Red Storm and turn it into something better on campus."

Forrester praised the job Burkhart has done with the organization in such a short time.

"Felix has done a good job for us to where it creates a huge advantage," Forrester said. "I hope the freshmen can come over and be a part of something to where they could help build our fan base and give our guys that added energy."

The Red Storm is kicking off the year with a welcome back rally featuring cover band Mike and Joe Sept. 15 at the Woodland Hall Bowl.

Burkhart said the main purpose of the Red Storm is to bring people together.

"What I love about sports is the diversity aspect. It doesn't matter your skin color or religion, it is that we have pride cheering for the same thing," Burkhart said. "Even if you don't understand sports you can see the teamwork and leadership in it. That sense of belonging unifies all of us."

Allan Lewis can be reached at  
alewis@alestlelive.com or 650-3524.  
Follow Allan @AllanJLewi





Alestle File Photo

The Cougars hold the Missouri Valley Conference 2nd place trophy dejected after falling in the conference title game to Bradley on penalty kicks. The win earned Bradley an automatic bid into the NCAA Division I tournament.

# Unfinished business

## Conference runners-up return in second year of D-I eligibility

**ALLAN LEWIS**  
Alestle Sports Editor

In the sixth round of penalty kicks in the Missouri Valley Conference championship game between SIUE and Bradley, Ryan Wilhelm had a chance to prolong SIUE's season and perhaps help the Cougars clinch their first NCAA Division I tournament birth since its first run through Division I in 1982.

### M. soccer - fall preview

Instead, Wilhelm's kick clanked off the crossbar, and he buried his head in the turf as the hometown Braves fans rushed the pitch to celebrate their conference championship.

Last year's defeat was the Cougars first chance at returning to the postseason under Head Coach Kevin Kalish. The Cougars had much to be proud of, claiming the No. 2 seed in the MVC tournament, and winning 10 games on their way to the title match. For Kalish though, last year is past him and the Cougars still have to prove themselves.

"It's a brand new year. Last year was a good run for that group," Kalish said. "They had really good leadership, gelled well as a team and dealt with adversity well. Hopefully this year's team can embody the same intangibles that make it possible for us to win the conference."

This year's team will have many new faces, but the Cougars bring back solid contributors on both side of the field. The Cougars graduated their leading goal scorer from last year, Chris Anzalone. The Cougars have also lost two instrumental pieces in the backfield, Mike Jones, now playing professionally as a member of the New York Red Bulls in MLS and captain Randy Roy.

Graduating players is a part of life in college sports though, and Kalish said he is more than confident the Cougars can fill the void.

"Losing Mike is big, but potentially we can fill his role with guys like Nash [Maduewekwe], [Wilhelm] and Benny [Jeffery]," Kalish said. Those three have been starters for three or four years. We are pretty confident we will be able to solidify that position."

The Cougars' success starts in the back. Jeffery led the team in assists with six last year, and was voted team MVP by his peers.

"He is just a fantastic player and has been playing with the Houston Dynamo [MLS] developmental team," Kalish said of Jeffery. "He has a great future ahead of him in the game and we can put him in any position with him and [Wilhelm]. We feel really confident those guys can take on a leadership role next year."

Scoring is going to be the biggest question mark coming into the year for the Cougars. SIUE has lacked a true goal-scoring threat at forward the past few years, and has thrived on a collective effort from a number of different players. While Anzalone led the team with seven tallies, Jordan Barnes and Jack Twelman were second on the team with just three goals each. Roy, Jared Tejada, Brian Groark and Jones each had two.

"We have some players who can get the job done and have made a lot of strides. Barney [Barnes] came on late last year, and it is going to be interesting to see who comes in top form and emerges," Kalish said. "It usually happens that way."

Barnes and Tejada seem to be the most logical candidates for a breakout season. Barnes played in 18 games for the Cougars, but didn't crack the starting 11 until a Nov.

6 game against his former school, Missouri State. Barnes scored the game-winning goal against the Bears six days later when the two teams met in the Missouri Valley Conference semifinals.

Tejada, a junior who scored 29 goals his senior season at Triad High School, scored two goals last season and was impressive during SIUE's short spring season with a goal against Saint Louis University and two goals in an exhibition against Quincy.

Unfortunately for the Cougars, the player they were hoping on seeing contributions from this season, senior Kevin Stoll, will miss his second season in a row after re-aggravating a torn ACL after transferring to SIUE from UIC.

"The biggest question mark in this group is finding the guys who can score at this level. Not one player has proven they can do it at the Division I level, and Stoll is the closest we have to a guy with a proven track record," Kalish said. "Hopefully Jared [Tejada] is able to step up and fill that role."

The Cougars have emerging freshman Travis Hoguet, who, if he can learn be successful at the Division I level, can be critical as the Cougars look to find goal scoring. He scored 30 goals for Belleville West last season.

"It is good to have Travis on board because he really has a knack for scoring goals," Kalish said. "As you mature and learn the speed of play, it takes a while to get good at it."

One area the Cougars will not have as much concern with is their goalkeeping. The Cougars return two seniors, Scott Meyer, the team's opening night starter last season, as well as Nick Collico, who filled in when Meyer went down with a season-ending injury against IUPUI Sept. 19. Meyer attempted to return for the Cougars

in a 4-1 win against Central Arkansas Oct. 21 before relinquishing his starting duties to Collico for the remainder of the year.

In just seven games, Meyer had a goals-against average of 0.92 with a career high 84.4 save percentage, while Collico played in 13 games with a 0.89 goals-against average, 55 saves and a 7-1-3 record.

Along with Meyer and Collico, the Cougars also have Josh Berner, who stopped two penalty kicks in the MVC championship game after Collico was hurt in the second half.

Kent Kobernus, a freshman transfer from Wisconsin, is the fourth keeper on the Cougar roster.

Even though the job was Meyer's outright going into last year, this year there will be an open competition for minutes in goal.

"We have some top level goalkeeping, and any one of those four can win the job, but there is only one goalkeeper who can get the nod," Kalish said. "It will be a good battle, and the good news is we are confident with whoever wins the spot. All of them have experience and can lead us to a successful season. It just comes down to who comes in the best shape during camp, who is the sharpest and who has the leadership we need in that position."

The Cougars face a tough road in the MVC, a conference that had two bids into the NCAA tournament last season in Bradley and Creighton, who earned an at-large spot into the field. Those teams, along with Missouri State, Evansville and Drake will also challenge SIUE for the MVC crown.

"We have enough talent to win the conference with this team," Kalish said.

# Strong recruiting class joins youthful squad

ALLAN LEWIS  
Alestle Sports Editor

The SIUE women's soccer team finished above .500 for its first time as a Division I team last

## W. soccer - fall preview

season and is looking for more.

The Cougars join the Ohio Valley Conference this season and bring back a wealth of young talent from an 8-7-1 season last year.

Head Coach Derek Burton said the goal for the Cougars is to show the OVC they belong in their first year belonging to a Division I conference.

"One of our goals is to show well in the OVC," Burton said. "A big part of it is to make our first go-around in the conference count."

The Cougars went 3-2 in a short preview of the conference last year, but have nine league contests this year despite being ineligible for the OVC tournament in its final year of NCAA certification.

Even though the Cougars saw the likes of Murray State, UT Martin, Eastern Kentucky, Morehead State and Southeast Missouri State last year, it will be different in 2011.

"Our players have to have a new mentality that conference games are different than anytime



Junior back Jennifer Tucker dribbles her way past a UT Martin defender during a game last season at Ralph Korte Stadium. The Cougars were 8-7-1 last year. Alestle File Photo

we have played these teams before," Burton said. "In the past, it was just another game. We will be getting everyone's best effort and that is something our players will have to match."

The Cougars return 21 players from last season's squad, including nine who were in the starting 11 on opening night last year. Chelsey Johnston and Ashley Davidson are the only two starters the Cougars are not returning due

to graduating.

"When you graduate players you miss out on having that experience on the team and what those girls have been through with us transitioning in our program and athletic department," Burton said. "It is not going to be different in years to follow. Every year you are going to miss out on that. It's expected, but of course we are looking forward to the year with who we do have."

The Cougars do have talent returning on both sides of the ball. Last year's leading scorer, junior Kristen Dierker (4 goals, 1 assist) returns, as well as sophomores Meagan Iffrig, Hope Jones, Sarah Deggendorf and Kourtney Price.

Three of Iffrig's four goals last year came during a 10 minute span against Central Arkansas, while two of Jones' three goals were good for game-winners. Burton said Price is a difference-

maker in the backfield, and her production flies under the radar because she is not primarily a goal scorer like the rest of the team's sophomores.

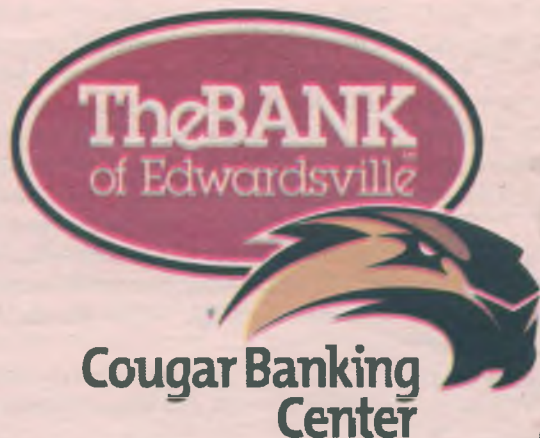
"The funny thing is the most impactful freshman we had last year was Kourtney Price," Burton said. "She played hard every game and the difference was not only goals we scored, but the goals we

W. SOCCER/pg.32

# Are You Ready To Hit The Books?

## Welcome Cougars!

From Your Friends At The



618-656-0780 • [www.cougarbanking.com](http://www.cougarbanking.com) • MEMBER FDIC

Come Meet Our Friendly Staff In The Morris University Center Aug. 22 -24

**DIVE IN HEAD FIRST**  
MAKE AN IMPACT ON YOUR EDUCATION

**START LEADING OTHERS.**

START ABOVE THE REST.

START BEING EMPOWERED.

**START DEFINING YOURSELF.**

START FEELING INSPIRED.

**START MAKING A DIFFERENCE.**

START ACCOMPLISHING MORE.

**START STRONG.™**

There's strong. Then there's Army Strong. Enroll in Army ROTC at Southern Illinois University Edwardsville to complement your education with the training, experience and skills needed to make you a leader. Army ROTC also offers full-tuition scholarships of up to \$45,000 and a monthly stipend to help pay for your education. And when you graduate, you will have an edge in life as an Army Officer and a leader. All it takes is enrolling in MSL101.

To get started, contact MAJ Michael Porch  
or [goarmy.com/rotc/n435](http://goarmy.com/rotc/n435).



**ARMY ROTC**



**U.S. ARMY**

**ARMY STRONG!**

**Welcome SIUE Students!**

**Ask about our Leadership and Scholarship Opportunities!**

**For more information, contact MAJ Michael Porch at 618-650-2500 or email [rotc@siue.edu](mailto:rotc@siue.edu)**

# Cougars hope change brings continued momentum

ALLAN LEWIS  
Alestle Sports Editor

Leah Johnson is entering unknown territory.

## Volleyball - fall preview

She was hired to take over the Cougar volleyball program in April, but did not have the opportunity to work out with her team until Aug. 9. She will have to get to know her team quickly, as the Cougars embark on a 27-game schedule beginning with the SIUE Invitational Aug. 26 and 27 at the Vadalabene Center.

This season marks the team's first run through the Ohio Valley Conference as well. Although Johnson has been unable to practice with a squad unfamiliar to her over the summer, she is optimistic. The Cougars were 14-15 last year.

While Johnson, a former volunteer assistant coach at Notre Dame and assistant at her alma-mater Missouri State could not technically practice with her new team, she has been able to acquaint herself with many of the personalities through the summer camps which the program runs.

"It certainly helped," Johnson said. "I got to see how they are in leadership positions and see them interact with one another. It has provided me with an opportunity to see who takes charge in a group setting and gives me a good preview at what I can expect in our



Sophomore middle hitter Kelsey Augustine, spikes a ball during a game last season. She figures to play a big role on the team in 2011 under first-year Head Coach Leah Johnson. The Cougars were 14-15 last year, and play a full Ohio Valley Conference schedule this season.

gym situation, regardless of the fact that we have not practiced yet."

She views a change in leadership as perhaps a positive for the team.

"I think it can be both an advantage and a disadvantage," Johnson said. "I think there is a lot of good energy that comes with change. Hopefully we can grasp onto that energy and run with it."

Johnson hopes the transition for the players from former Head Coach Todd Gober to herself is seamless. While it will take time to adjust to specific nuances, she said volleyball is the same game, and on the court the Cougars should not have many problems.

"I don't necessarily think it will be drastically different," Johnson said. "A lot of teams do

the same things, coach to coach, program to program."

The Cougars will have to adjust to a different pace in the offense, and cue words on set plays under Johnson.

"We want to play relatively fast, but not be high risk," Johnson said. "In years past, the team runs high-air, and sometimes that is not your goal. We have to

bring our efficiency up."

SIUE will look for a leader next season. The Cougars were a relatively young team last year, with freshmen Lexi Cibulka, Kelsey Augustine and Julia Whitfield playing major roles.

The Cougars will look to those three as sophomores, but are

VOLLEYBALL/pg.29

# Welcome Back!

## 2011 Fall and Spring Facility Hours

Monday - Thursday 6:00 a.m. - 11:00 p.m.

Friday 6:00 a.m. - 10:00 p.m.

Saturday 9:00 a.m. - 9:00 p.m.

Sunday 12:00 p.m. - 10:00 p.m.

<http://www.siu.edu/crec/hours.shtml>

register & pay for



online 24/7 @[siue.edu/crec/intramural](http://siue.edu/crec/intramural)

## check out our new fitness classes!

FEATURING:

JERSEY CORE YOGALATES EXPRESS AQUA RUMBA AND MORE!

The Marina opens this weekend!

August 27-October 2  
Sat & Sun Noon-5p

# Yelovich back from medical redshirt to lead SIUE

ALLAN LEWIS

Alestle Sports Editor

Basketball season is still months away, but Head Coach Lennox Forrester already has a few goals in mind for his team come November.

## M. BB - winter preview

"Looking at what we were weak at last year, we have to improve defensively and rebounding the basketball," Forrester said. "It always could be better when you make some shots and limit turnovers, but we are focusing right now on the defensive end of the floor."

The Cougars certainly had some trouble in those areas during last season's 8-21 finish and will have to improve upon those numbers without their leading rebounder from last season, Nikola Bundalo, who averaged six per game.

SIUE also suffered its largest defeat in program history, a 111-50 thumping put on by Iowa during Thanksgiving break.

Despite this, Forrester said

the Cougars will be in a better position than they were last year, bringing back junior forward Mark Yelovich, who missed 28 of the team's 29 games last year with a broken foot.

Yelovich led the team in scoring his sophomore year, and scored 15 points in the season opener against IPFW before suffering his season-ending injury. Yelovich took a redshirt year, and should return to the team.

"Losing Mark didn't help much at all, so hopefully he is healthy and comes back to where he was before," Forrester said. "He's been working out but is not a full go yet. He is making strides, and there is still some time for him to get healthy."

Yelovich will become even more important, because the Cougars leading scorer from last season, Cornelius Chatt (12.1 ppg) is no longer with the team after being deemed academically ineligible by the NCAA.

The Cougars return senior Corey Wickware (11.6 ppg) along with sophomore Michael Messer (8.7 ppg) who will look to have a

breakout season. The Cougars also bring back point guard Kevin Stineman, guard LeShaun Murphy and post player Zeke Schneider.

SIUE will have three new freshmen joining the team next season in Charles Joy (O'Fallon), Michael Birts (Miami, Fla.) and Kris Davis (Detroit) as well as two junior college transfers in Jerome Jones (St. Louis) and Derian Shaffer (Detroit). SIUE also added Maurice Wiltz, a transfer from Colorado State who will sit out the season per NCAA transfer requirements.

This year, the Cougars will get their first full-season look at the Ohio Valley Conference. During the past three years as an Independent, SIUE has had little success against their future conference, going 1-14 against the OVC. The lone win came on Dec. 31, 2008 against Southeast Missouri State.

"I think we have done a pretty good job scheduling the OVC schools the past few years so

MBB PREVIEW/pg.32



Alestle File Photo

Mark Yelovich scored 15 points in last year's season opener against IPFW but injured his foot driving to the basket in the second half. Yelovich led the Cougars in scoring his sophomore year.



Alestle File Photo

Sophomore Julia Whitfield had 270 kills during her freshman season.

## VOLLEYBALL from pg. 28

in need of senior leadership after graduating Sydney Winslow, who led the team with 319 kills last year and a .282 attack percentage. Winslow also had 23 service aces from her middle-hitter position.

Johnson said Jessica Hemann, who returns for her senior season, could be the player to improve and lead the team.

Hemann played in all 29 of the Cougars' matches last season, collecting 205 kills while maintaining a .269 hitting percentage as a junior.

"I really see her having a stellar senior year," Johnson said. "From what I have gathered from her teammates, she will be a leader for us."

Along with those returning, the Cougars bring three new freshmen and a Division I transfer to the team.

Gober signed Chelsi Hummert and Emily Anderson before Johnson stepped into the program and signed Chelsea Colclasure, a freshman from Decatur, Ind. and Cori Harris, a transfer from the University of South Carolina Upstate.

"Hummert and Anderson are both young ladies who have

played at a high level on their club teams and are from championship high school programs, so I think they will bring experience and a style of game that complements the rest of the team," Johnson said.

Harris led USC-Upstate in kills last year, and had 21 against the Cougars in a Sept. 18 game played at the Wofford tournament.

"When we competed against them, she led the team in kills," Johnson said. "She is a truly passionate player both in the classroom and on the court."

Colclasure adds a wealth of experience from a successful high school and club career.

"We added a very good defensive player with Colclasure and I think she will compete for a starting position," Johnson said. "She competed with one of the top defensive and ball control clubs in the country and she recently made the all-star team at USV nationals."

Johnson said the Cougars will use the early portion of their schedule, which includes the SIUE Invitational, Indiana State Invitational and the Best Western Invitational at Bowling Green, to gain a better understanding for one another before the conference schedule kicks off in mid-September.

"That two weeks of pre-season will provide us with the time we need to get a good idea of where we go from here," Johnson said. "We have to be flexible and trust where we are in the present."

Once the Cougars get into the OVC, they will be playing back-to-back nights on six occasions to complete their double-round robin conference schedule, so endurance will be a key for success.

"We have to respect the athletes recovery time and provide an opportunity for us to grow at the same time," Johnson said. "It

is a true balancing act to recover while pushing them so they are prepared to play those back-to-back matches."

Johnson said the toughest stretch for the Cougars is early, playing six games in eight nights to begin the year.

"We have a packed schedule early on," Johnson said. "It will be a mental and physical challenge for us."

The Cougars have the advantage of beginning at home,

which Johnson said is beneficial because it allows the Cougars a few extra days to train and get acclimated as a team.

"That allows us continuity in our training," Johnson said. "We gain two days in our gym plus our players won't be missing the first week of classes. During the first week of school, it is really important that we are at home."

Johnson said the biggest obstacle for her team in 2011 is adjusting to change.

"We have to overcome new information, my new ideas and philosophies and new people," Johnson said. "It is just as important for our players to be flexible and adaptive as it is for us as a staff to be welcoming to our athletes. Change is our biggest obstacle, but change can also be our biggest advantage."

Allan Lewis can be reached at [alewis@alestlelive.com](mailto:alewis@alestlelive.com) or 650-3524. Follow Allan @AllanJLewis

CAMPUS ACTIVITIES BOARD PRESENTS 18TH ANNUAL

THE ROCKY HARRAR PICTURE SHOW

THURSDAY AUGUST 25

7:00 PM

MUC MERIDIAN BALLROOM

FREE!

FREE!

Come in your "HORROR" outfit to be entered into the costume contest.

Campus Activities Board

# Cougars work to find extra edge over the summer

**JASON FRAZIER**  
Alestle Reporter

Women's basketball Head Coach Amanda Levens cannot run or setup practices in the summer per NCAA rules, but that has not stopped her team from taking the initiative to practice on their own in the Student Fitness

## W. BB - winter preview

Center.

Despite having just two seniors on the team next year in Madison Meade and Melia Duncan, Levens said the Cougars are full of leaders.

"This is going to be the first year we have upperclassmen that played for us during their underclass years. We are excited as coaches to finally have that in place," Levens said. "Upper-class players in previous years have been JUCOs or four-year transfers. They can echo our expectations to some of the



Alestle File Photo

WBB PREVIEW/pg.31

The SIUE women's basketball team looks to improve on a 11-19 season in 2011-12.

# Tough schedule ahead for Devine, White, Cougars

**AJ SANSON**  
Alestle Managing Editor

In their final season of the Division I transition and with the Ohio Valley Conference not sanctioning wrestling, the team now has a home in the Southern

## Wrestling - winter preview

Conference.

The 2010-11 season ended on a high note as the team boasted eight All-Americans and one national champion, as junior transfer Michael Dace beat out his own teammate, freshman Deshoun White to capture the national title in the 174-class.

The 2010-11 schedule was possibly the toughest in Cougar wrestling history as the team had road meets against Missouri, Illinois,

Indiana and Iowa. The team still managed seven victories on the season, a large improvement from the previous year when the team only had one.

Head Coach David Ray said he feels the tough schedule last year may pay dividends for his team this year and in the near future.

"Right now, it'll be hard to say," Ray said. "Following a year with a tough schedule, they'll be expected to do more. It'll make them more competitive and they now know what it takes to be standing on top of the podium."

The 2011-12 season will not feature a heavy SoCon schedule due to the fact that team had its tentative schedule already set in place at the time of the conference selection, but they will see two future conference rivals in Gardner-Webb and Campbell.

The Cougars defeated Gardner-Webb Jan. 7, 21-17, for their first ever Division I victory.

"With these two teams we want to do well," Ray said. "We want to stand out and let them know that we're here. We want to bring something extra to the conference and bring the level of the SoCon up."

The team will not be eligible to wrestle in the conference championships until the 2012-13 season when the transition to Division I is complete.

The squad also did not lose anyone to graduation. Seniors Dace [174] and Steve Ross [157] figure to be early picks to remain All-Americans as well as junior heavyweight David Devine [285] White [174].

AJ Sanson can be reached at [asanson@alestlelive.com](mailto:asanson@alestlelive.com) or 650-3524. Follow AJ @Aj\_Sanson



Alestle File Photo

David Devine (Right) returns at 285 pounds for the Cougar wrestling team. The Cougars enter the season with an Independent schedule, but accepted entry into the Southern Conference over the summer.

## Students Today...

Are you ready to get connected and enhance your college experience with STAT?

- Interact with alumni before graduation
- Get great advice about your major and future career
- Create valuable career contacts for jobs and internships
- Local business and online discounts
- Social events, networking opportunities and more!

Participate in the STAT Alumni Mentor Program!  
Get matched with an SIUE graduate working in your field of study and gain valuable career advice

Keep an eye out for the STAT Welcome Back BBQ, STAT Nearly Naked Mile, SIUE Speednetworking, Mentor Mixers, STAT Tax"e" and more!

**STAT**  
Students Today,  
Alumni Tomorrow

Sign up today!  
[SIUE.edu/alumni/stat](http://SIUE.edu/alumni/stat)

Alumni Tomorrow



**Custom Airbrush**  
112 1/2 North Main • Edwardsville

**GRAND OPENING!: JUNE 30-JULY 14**  
**10% OFF First 100 New Customers!**



T-Shirts • Signs • Murals  
Tail Gates • Leather • Portraits  
Glass • Motorcycles • Helmets  
Golf Carts • Skateboards  
Surlboards • Screen Printing  
ANYTHING!!

**618-795-3767**

## MEN'S SOCCER from pg. 25

"They are going to have to put forth the effort and discipline and pay attention to the details in order to be successful. The coaching staff believes we are in a position to do well this year and we will see how it all plays out."

The Cougars non-conference schedule in 2011 begins with Tulsa, who held the No. 2 ranking in the country last year, and includes matches against UIC, DePaul, Wisconsin, Green Bay, Dayton, Cincinnati, Belmont, Lipscomb, UMKC, Eastern Illinois, Marist and Nebraska-Omaha.

The Cougars open MVC play at home for the second-straight year, taking on Evansville at Ralph Korte Stadium for homecoming Oct. 8.

The State Farm Missouri Valley Conference Tournament is scheduled to take place Nov. 9-13 in Omaha, Neb.

Allan Lewis can be reached at [alewis@alestlelive.com](mailto:alewis@alestlelive.com) or 650-3524. Follow Allan @AllanJLewis

# Softball prepares for OVC again, hoping for more

**JASON FRAZIER**  
Alestle Reporter

Since their first official Division I season ended with two straight losses in the Ohio Valley Conference tournament, the SIUE softball team has been itching for another chance at making the NCAA tournament.

"We are plugging along. Before you

## Softball - spring preview

know it, it will be time for fall ball," Montgomery said.

The 2012 season will be Montgomery's 24th season as coach of the Cougars. However, last year was her first season as a fully certified Division I coach, finishing with a 28-30 record overall.

"I think we underachieved a bit last year," Montgomery said. "That's not how I want to function as a team. I want us to be our best all the time and hopefully peak towards the end of the year."

In their first season of OVC play, the Cougars finished with a 19-11 conference record, but it could have been better. Montgomery said they missed out on victories against teams they were better than.

There are a few returning players SIUE will count on to take them to another level. One of those players is junior

Taylor Tooley. She led the team in each Triple Crown category last year. She hit .331, with eight home runs and 42 RBI.

"With two years of experience hitting against a high level of competition, I expect [Tooley] to be a more mature hitter this year," Montgomery said.

Junior Lindsey Coleman will be the only pitcher returning from last year's team as SIUE graduated its all-time strikeout leader, Erika Taylor and fellow starting pitcher Ali Downing. Montgomery hopes junior college transfer Amanda Lambrecht and freshman Alexandra McDavid can fill those voids.

"I think we have a very talented pitching staff on board, but they are untested at the Division I level," Montgomery said.

Lambrecht made her fair share of batters swing and miss while pitching at Kirkwood Community College. She led the NJCAA in strikeouts last season.

"The most recent game I saw her (Lambrecht) pitch in, she had 17 strikeouts," Montgomery said.

On offense, incoming freshmen Brittany Toney, Kamryn Smallwood and Rebecca Gray will also look to earn playing time in their first year as Cougars.

"When you rely on younger players

there is always a question mark," Montgomery said. "I can tell you we will be more talented this year, we will have a deeper roster and there will be a lot more competition for playing time."

The roster has two juniors and six seniors coming back to give the team a more experienced group than last season's roster. Five of those seniors are part of a core outfield that includes speedster Lindsey Barron. Sophomore Chelsea Yankolovich started every game at shortstop and is also expected to be a key contributor.

"We are a little older. The maturity level makes a big difference when you are playing the grinding Division I schedule day in and day out," Montgomery said.

However, years of experience will not be the deciding factor in who makes it on Montgomery's lineup card. Each player, freshman or senior, will have an equal opportunity to earn playing time.

"I go in every year with the concept of nobody has a spot until you earn it," Montgomery said. "We have seniors returning but we also have a lot of young kids that are pretty talented. Whoever is the best player is going to play. My job is to put the best product on the field."

Jason Frazier can be reached at [jfrazier@alestlelive.com](mailto:jfrazier@alestlelive.com) or 650-3524. Follow Jason @JFraz85



Alestle File Photo

The SIUE softball team finished 28-30 during its first season in the OVC.

## WBB PREVIEW from pg. 30

players."

Levens is currently on the road trying to recruit a strong class for her 2012-2013 roster, hoping it will equal or exceed what she brought in for next season. The most prized recruit of this class will be Tierny Austin, who was named the high school Player of the Year in Rockford last season.

"We tell them when we recruit them to come in and play," Levens said. "We want them to come in and help us right away."

The incoming group of freshmen has a tough act to follow. Sophomore guard

Jazmin Hill made an immediate impact in her debut season as a Cougar, leading the team in points and assists. Hill also set a new SIUE single-season record of 76 3-pointers made.

"Each year the game slows down a little bit for you. She will continue to get better at both ends of the court," Levens said. "She takes a lot of ownership in the success of our program. As a freshman she was already one of our leaders."

Junior forwards Raven Berry and Michaela Herrod will try to build on a strong post presence for the Cougars. Berry was second on the team in scoring with an

average of 11.8 points per game. In addition to her scoring prowess around the basket, Berry also is an emotional leader on the court.

Herrod showed the potential she is capable of with five double-doubles last season.

"In her first two seasons, Michaela has really come along in the second half of the season," Levens said. "I think it is a personal goal of hers to play better early in the year. Raven's goal this offseason was to come in more fit so she can play extended minutes for us."

The Cougars will not be eligible for the

NCAA tournament this season. However, they will play a full D-1 schedule and face every one of their future OVC foes. They will also step on court against some teams from the Missouri Valley Conference along with Valparaiso and DePaul, who made it to the Sweet 16 last year.

"Our schedule is definitely going to be a challenge for us," Levens said. "We feel we are going to be better and more consistent earlier. Our goal is to get better every day."

Jason Frazier can be reached at [jfrazier@alestlelive.com](mailto:jfrazier@alestlelive.com) or 650-3524. Follow Jason @JFraz85

**Football Season Is On!**  
Lock-IN with your favorite team  
and great drink specials!



### Drink Specials

**Saturday & Monday**  
\$10 Domestic Buckets

**Thursday**  
\$3 Long Islands  
\$2.50 23 oz. Drafts  
(Coors Light, Miller Lite, Budweiser, Bud Light, Budweiser Select)

**Sunday**  
\$10 Buckets  
\$2.50 Screwdrivers  
\$2.50 Bloody Marys



**1071 S. Hwy 157**  
Across From Edwardsville High School  
**(618) 655-9920**  
[www.bullandbeargrillandbar.com](http://www.bullandbeargrillandbar.com)



**SILVA**  
VS  
**OKAMI**

PLUS  
**RUA vs GRIFFIN**  
**LIVE**  
**AUGUST 27th**  
**8 P.M.**

**\$10 DOMESTIC BUCKETS**

## Half Price Appetizers

Any Appetizer  
Half Price

**Sunday - Thursday Friday & Saturday**

**8 PM - Close 10 PM - Close**

**Monday - Thursday**

**2 PM - 5 PM**

## College Night

**Wednesdays**

### Drink Specials

\$1 Mugs & \$5 Pitchers \$2 Wells  
(Coors Light, Miller Lite, Budweiser, Bud Light, Budweiser Select) \$2 Longnecks

## Weekday Lunch Specials

**9 items to choose from for only \$5.99**

Monday - Friday 11am - 2pm

Dine-in Only. Kitchen Closes One Hour Prior To Bar. With Purchase Of Any Drink At Regular Price. Cannot Be Combined With Any Other Coupon.

## Collins looks past 1,000, Cougars have revamped pitching staff

**AJ SANSON**

Alestle Managing Editor

Fresh off its first winning season since 2007, the Cougar baseball team is eying another successful year.

### Baseball - spring preview

The 2011 team did not get off to a fast start, going 1-11 in the season's first 12 games, but finishing the season on an eight-game winning streak in addition to separate winning streaks of five and seven games, helping the team finish with an overall record of 28-24.

In 2012 there will be two holes to fill in the top of the rotation. Gone are seniors Josh Malin and Spencer Patton, the latter now in class-A ball in Idaho Falls after being selected in the 24th round of the MLB draft by the Kansas City Royals.

The two righties combined for a record of 14-7, with nine of those wins Patton's. The two hurlers also had a combined 178 IP and 160 strikeouts.

Associate Head Coach Tony Stoecklin said this may be the best time for sophomores Travis Felax (5-2, 2.62 ERA) and Ryan Daniels (1-4, 5.12 ERA) to step up and fill the some of the void.

Stoecklin has also recruited junior

college pitchers Drew Staples and Dylan Brown, both out of Pierce College in Washington.

"Drew is a big lefty with pro-type stuff," Stoecklin said. "Dylan is another big, tall lanky lefty with good stuff."

Stoecklin also said the 1-11 start to open the season last year needs to become a thing of the past.

"I'd like to see us get off to a better start," Stoecklin said. "Earlier in the season last year a lot of the problems were pitching, so I'd like to resolve that and get out of the gates stronger."

A big part of the Cougars' success last season was the emergence of freshman right fielder Devin Caldwell. Caldwell led the team in home runs (6), RBI (53), slugging percentage (.513) and finished third on the team with a .314 average.

Head Coach Gary Collins, who became the 55th NCAA baseball coach with 1,000 victories May 20, said he feels his team is just about ready to make a name for itself.

"We've got more work to do, we've got to replace two senior pitchers that won a lot of games for us," Collins said. "But we don't need major improvement, we just need to improve a little in all aspects of the game. If we get 10 percent better at [aspects] like fielding and baserunning we'll be fine."



Photo by Michelle Beard/Alestle

Head Coach Gary Collins earned his 1,000th career win last season.

Collins also may find himself right where he was last season when the team recruited Caldwell with Alton's Nick Lombardo signing with the Cougars. The outfielder led the St. Louis area with 53 runs scored and was in the area's top 20 in average (.500), home runs (7) and RBI (41).

Collins said he expects his 2012 squad to fare better on the road due to experience.

"I think we need to hold our own early on the road," Collins said. "Our first six games will be on the road so we don't need to get into a hole. With the experience these guys got last year I think we can win on the road."

AJ Sanson can be reached at [asanson@alestlelive.com](mailto:asanson@alestlelive.com) or 650-3524. Follow AJ @Aj\_Sanson

### W. SOCCER from pg. 26

didn't give up. She kept goals off the scoreboard, and we expect all of our girls to come back strong."

Last year was a relatively low-scoring one both for the Cougars and their opponents. SIUE outscored the opposition 23-19 in their 16 games played, and while Price and Jenny Humphrey helped keep the opposition away from the Cougar goal, senior goalkeeper Claire Lovercheck was

there when opposing offenses happened to make their way through.

Lovercheck started all 16 games for the Cougars, saving 86 shots while maintaining a goals-against-average of 1.17 and a .819 save percentage.

Just like last year, Burton's 2011 recruiting class figures to make an impact right away. The team will bring in two new midfielders, a forward and a goalkeeper to round out its roster.

Freshmen midfielders Michelle Auer and Courtney Young seem to be the gems of the SIUE recruiting class. Auer, coming to SIUE from Peoria Notre Dame High School in St. Louis, was tabbed the Missouri Class 2 Player of the Year, as well as the St. Louis Post-Dispatch's All-Metro Player of the Year. Young, from Visitation Academy in St. Louis, was the Missouri Class 2 Offensive Player of the Year, and a second-team All-

Metro selection by the Post-Dispatch. She broke a school record, scoring 33 goals her senior season, good for ninth in the St. Louis area. Seven of Young's goals were game-winners.

"Michelle is a good, shifty player and could be a difference-maker in our program," Burton said. "She is super feisty, very competitive and an outstanding athlete who played multiple sports in high school."

Auer played soccer, track and basketball in high school, but Burton said soccer stood out for her.

"She chose soccer early on because soccer was her first love," Burton said. "She will have one of the best shots on our team as a freshman and at 5-[foot]-4, 110 pounds she has an incredible natural ability to strike a ball and works well on restarts, corners and all of those things."

Young will be ready to step in right away for the Cougars.

"Courtney Young is probably the closest thing to a college-ready forward as you can have," Burton said. "She is a physical player who knows how to use her body and has a knack for being in the right place at the right time. She isn't going to score 25-yard bombs, but will make something out of nothing and is good in the air."

While Auer and Young bring

with them their accolades and experience, Burton said the other newcomers, Sam Jones and Courtney Vonder Haar, should impress as well.

"Michelle and Courtney [Young] get the most in terms of media attention because they score goals," Burton said. "Sam and Courtney [Vonder Haar] are both good players who play positions that don't get too many glaring stats, so I think as a whole the group will have an impact on the program."

Burton said he will mix and match where Jones plays, although she could figure to be in the starting lineup.

"She is a super-versatile player with great vision and will be a great fit wherever we chose to use her," Burton said.

Vonder Haar adds depth to the Cougars' goalkeeping core behind Lovercheck.

"We have Claire coming back, but Courtney will add to our depth and do a great job learning the college game, and she should really take off in our training environment," Burton said.

The Cougars will get to see its young players make their debut with the team Aug. 13, when the team hosts Iowa State in an exhibition game at Ralph Korte Stadium.

Allan Lewis can be reached at [alewis@alestlelive.com](mailto:alewis@alestlelive.com) or 650-3524. Follow Allan @AllanJLewis

# Just 4 Laughs Presents: Dave & Ethan



## FREE COMEDIANS!



Wednesday, August 24  
7:00PM  
MUC Meridian Ballroom

### MBB PREVIEW from pg. 29

we are familiar with them and already know how physically and mentally tough we will have to be," Forrester said. "We can compete for the regular season title now, so I hope that changes our mind-set now that we are playing for something."

The Cougars' non-conference schedule includes the Cancun Challenge, beginning with two inland games against Illinois and Illinois State before

two neutral court games in Mexico against Lipscomb, Sacred Heart or Hampton. The Cougars will play SIU Carbondale for the first time in more than 20 years Dec. 19, and host Ball State, Cal State Fullerton and an ESPN Bracketbuster game at the Vadalabene Center.

Allan Lewis can be reached at [alewis@alestlelive.com](mailto:alewis@alestlelive.com) or 650-3524. Follow Allan @AllanJLewis



**Men's tennis prospectus**

**Head coach:** Jason Coomer (second season)

**Last year:** The Cougars struggled, going 1-13 in team play.

**Key loss:** Paulo Gonzalez was a bright spot for the Cougars through their struggles as a team. Gonzalez was 44-22 during his four-year career at SIUE, and played No. 1 singles last season. He won an individual tournament championship at Bradley last year.

**Key additions:** The Cougars signed an international player, Marten Jonsson, from Sweden. He was the No. 2 player on the winning team of the Swedish Outdoor Championships.

**Women's tennis prospectus**

**Head coach:** Jason Coomer (second season)

**Last year:** The Cougars were 5-11 with a 2-5 record at home.

**Key loss:** Carli Connors (niece of tennis great Jimmy Connors.) She had a down year in 2010-11, going 1-19 in singles play, but was 21-9 as a freshman in 2007-08. The Cougars also lose Ali Wulfers, who was 5-7 in doubles play and 2-6 in singles action.

**Key additions:** Haley Ilcewicz of Lockport is the 14th ranked junior player in the Great Lakes region.

**Men's golf prospectus**

**Head coach:** Derrick Brown (third season)

**Last year:** The Cougars placed in the top five at the DoubleTree Intercollegiate, the Butler Spring Invitational and the Branson Creek Invitational.

**Key loss:** Neal McCarty had three career victories (tied for SIUE record,) and holds three of the top-five season stroke averages in school history.

**Key addition:** Colin McCarty, Neal's brother from Sierra Vista, Ariz. Colin was a high school state champion and co-captain of his team. He medaled in seven events his senior year.

**Women's golf prospectus**

**Head coach:** Jennifer Jakel (fourth season)

**Last year:** The Cougars finished fourth in their first three events.

**Key loss:** Courtney Lovegreen posted an 84.1 scoring average, a career best last year.

**Key additions:** Ashton Stair was a state champion in Wisconsin.



Photo by Michelle Beard/Alestle

Spin class is one of many fitness classes offered at the Student Fitness Center.

## “Fit”ing students needs

**JOHN LAYTON**  
Alestle Reporter

The Student Fitness Center at SIUE hopes to make the “freshman 15” a thing of the past.

Nathan Scott, a recreation specialist for campus recreation said the SFC and Vadalabene Center are open to all students and provides enough services to satisfy any fitness enthusiast.

“Our goal is to reach out to 100 percent of the students and offer something that would fit the needs of anybody,” Scott said.

There are plenty of options out there for students. The facility

features five hardwood courts for basketball, volleyball or badminton, as well as a multi-purpose court which can host roller hockey, soccer and tennis. There are two fitness rooms featuring cardio and strength machines as well as a separate weight room and a 1/8 mile indoor track.

Students can also find a rock climbing wall, four racquetball courts, a group activities room and a dry sauna inside the Vadalabene Center.

All of the facilities can be daunting to newcomers trying to get fit. This is why Fitness Specialist Chelsea Bradley said weight room



orientations are provided to students, giving them a comprehensive tour of the facility.

Students can also hire a personal trainer at the cost of \$16 for each one hour session.

“The thing that sets us apart is all of our instructors and trainers are

**FITNESS CENTER/pg.34**

# Welcome Back

*from the* Morris University Center

- Administration Office
- Building Operations

- Business Office
- Cash Office
- Cougar Lanes
- Dining Services
- Event Services
- Information Desk
- MUC Marketing
- Technical Services
- Textbook Service
- University Bookstore

for more info, visit us at:

[www.siu.edu/muc](http://www.siu.edu/muc)



**ALESTLE CLASSIFIEDS GIVE YOU MORE!**

Place your classified ad at a time convenient for you using our easy, secure online interface at [alestlelive.com/classifieds](http://alestlelive.com/classifieds)

**BASIC PRINT INSERTION RATES:**

**10 word minimum for all ads.**  
 20 cents a word 1-2 insertions, per insertion  
 19 cents a word 3-4 insertions, per insertion  
 18 cents a word 5-19 insertions, per insertion  
 17 cents a word 20+ insertions, per insertion

**Print Extras:**

All bold, additional \$5

**HELP WANTED**

Looking for a part-time nanny for 2 children; M-F 20-30 hours per week; \$8 to \$10 per hour; flexible schedule. Email [EdwardsvilleNannyJob@gmail.com](mailto:EdwardsvilleNannyJob@gmail.com) for info.

**FOR RENT**

2 and 3 Bedroom Townhomes **N O W AVAILABLE!** Beautiful 2 and 3 bedroom townhomes. **CALL FOR OUR GREAT SPECIALS!** 4 locations in Edwardsville. W/D connections in all homes. Pet friendly. Some locations include swimming pool, garages, basements and free basic/expanded cable. 618-692-9310 Email [cherryhillsleasing1@millsproperties.net](mailto:cherryhillsleasing1@millsproperties.net)

Looking for quiet non-smoking student

**Web Extras Vary**  
 Please schedule your ad carefully as we cannot offer refunds. Corrections must be noted by on the first day the ad appears in the newspaper.

**Deadlines:**

By noon Monday for Tuesday issue  
 By noon Wednesday for Thursday issue  
 Having trouble? Call 618-650-3528 or e-mail [classifieds@alestlelive.com](mailto:classifieds@alestlelive.com)

**Alestle Office Hours (MUC 2022):**

9 a.m. - 4:30 p.m. Mon-Fri

to rent private finished basement, kitchenette, partial bathroom, storage area, laundry. Maryville Call after 5pm weekdays any time weekend 610-6441 \$300 a month

Roommate Wanted Spacious 3 bedroom house with large yard in quiet neighborhood next to Troy park in Troy IL. Only 10 minutes from campus. We are looking for 3rd roommate, male preferred.

Room currently available. If you are interested please call Simonne at 618-616-0303 or respond to email. Thanks. Email [simonned@heffins.com](mailto:simonned@heffins.com)

Third Bedroom for rent in brick home, quite neighborhood. Males only apply. 618-409-0315

6:15-8:15 a.m., from 11:30 a.m. to 1:30 p.m. and from 3:30-8:30 p.m.

"We have lap swim during the first two sessions and open swim at the end," Scott said.

The Fitness Center is not only the home of facilities and programs for individuals, but the university's intramural sports programs can be found there as well.

SIUE has more than 30 intramural programs offered each year. Popular team sports include volleyball, flag football, basketball, softball, indoor soccer and ultimate. Many one-day tournaments are also scheduled.

Scott said co-ed volleyball, flag football, basketball and softball are the most popular intramural sports.

"We run a co-ed volleyball league every fall semester and we break our previous years' record in terms of teams registered every year," Scott said.

The costs of participating in intramurals include a \$25 registration fee and a \$20 forfeit fee. Students will receive their forfeit deposit back if their team attends every game.

Scott said intramural sports are moving to an online registration and payment system through [IMLeagues.com](http://IMLeagues.com) this fall.

"It will allow students to enroll online, pay online, manage their rosters online and see who they're playing," Scott said. "If you're playing four sports, it automatically pulls in all of your games into your personal calendar so you can see when you play what at what time."

Scott said the online system will be a great benefit for the students.

"You can sign up for an intramural team at two in the morning if that's what you want to do, or right up until the very last minute," Scott said.

Scott said he wants students to realize there is something for everybody at the VC.

"I just think it's important for people to know how diverse the programs we have are," Scott said. "We have everything from rock climbing to kayaking to an abs class. It's all over the spectrum."

John Layton can be reached at [jlayton@alestlelive.com](mailto:jlayton@alestlelive.com) or 650-3524. Follow John @hmkamckl



**Welcome back SIUE students from Shenanigans Bar & Grill**

Enjoy this next year at college with:

**Tuesday & Thursday "Long Neck" \$1.50 Specials all day**

**Wednesday nights Trivia at 9 p.m.**

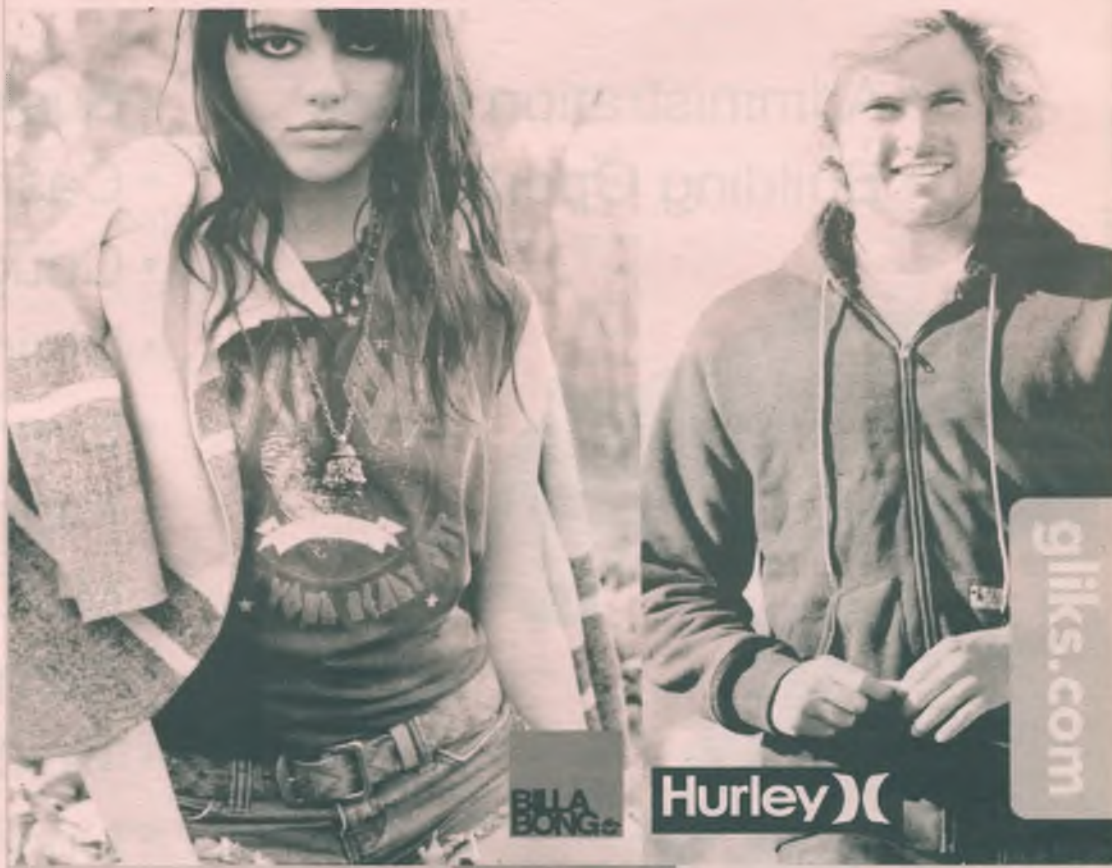
**Thursday nights "College Night" at 10 p.m.**

**10% off all food items with student ID (excludes alcohol, dine-in only) discount ends 9/1/11**



**Shenanigans Bar & Grill**

**Billabong • Roxy • North Face • Affliction  
 Hurley • Volcom • Silver • Fox • UGG • Toms**



**GLIK'S**

Visit us in Edwardsville  
 124 S. Buchanan St.  
 (618) 655-0084

# SIUE Core Campus Map

**Key**

- 1. Vadalabene Center
- 2. Science Building
- 3. Engineering Building
- 4. Evergreen Hall
- 5. Metcalf Theater
- 6. Dunham Hall
- 7. Art & Design Building
- 8. Center for Spirituality and Sustainability
- 9. Morris University Center
- 10. Lovejoy Library
- 11. Peck Hall
- 12. Rendleman Hall
- 13. Woodland Hall
- 14. Student Fitness Center
- 15. Alumni Hall
- 16. Founders Hall
- 17. Bluff Hall
- 18. Prairie Hall
- 19. Student Success Center



\* Actual area of buildings are not to scale.

## Almost As Good As A Check From Home.



*At SIUE Credit Union, we don't give you a hug or a home-cooked meal, but we offer you something almost as good: **Individualized service from an experienced staff!***

- Competitive interest rates on Savings accounts, IRA accounts and Certificates
- Mortgage, Vehicle and Signature Loans
- Online Banking and Bill Pay
- Checking accounts designed to meet your needs
- Payroll Deduction
- Direct Deposit
- Visa Credit and Debit cards
- 24 hour ATM at 480 University Park Dr.

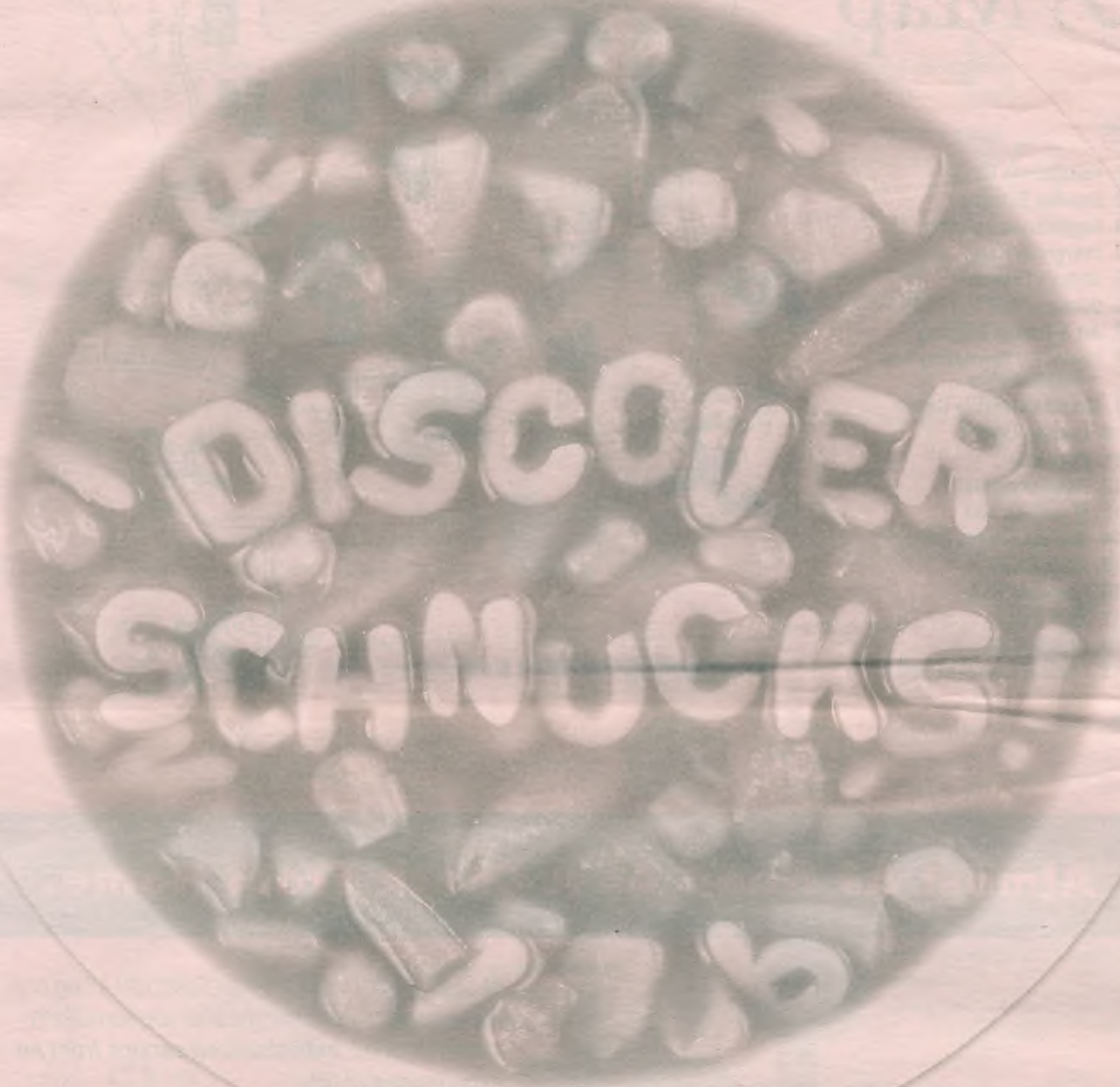
We are proud of our reputation as a full-service institution. We've stood the test of time by offering quality financial products to the SIUE Community since 1959.

Stop by and talk to us!



1566 Lewis Road • Box 1069 • Edwardsville, IL 62026  
618.650.3760 • www.siuecu.org

fresh foods • prepared foods • pharmacy  
school supplies • personal care



Schnucks, a **full-service grocery store**, has everything you need in one convenient stop from **fresh foods** to a **full-service pharmacy**. You'll also find **prepared foods**, **school supplies** and **personal care products**.

Saving money is always a requirement! You'll find **more ways to save** every day with **Schnucks family of brands** that give you **quality choices for less**.  
Enjoy Peace of Mind at Schnucks!

Visit [www.schnucks.com](http://www.schnucks.com).

**Schnucks**

**Schnucks Edwardsville**  
2222 Troy Rd. • (618) 659-0010  
Open 24 Hours