

Index	
News1-4
Opinion5
A&E6-7
Sports8-10
Puzzles11
Classifieds12

The Alestle

Alton - East St. Louis - Edwardsville

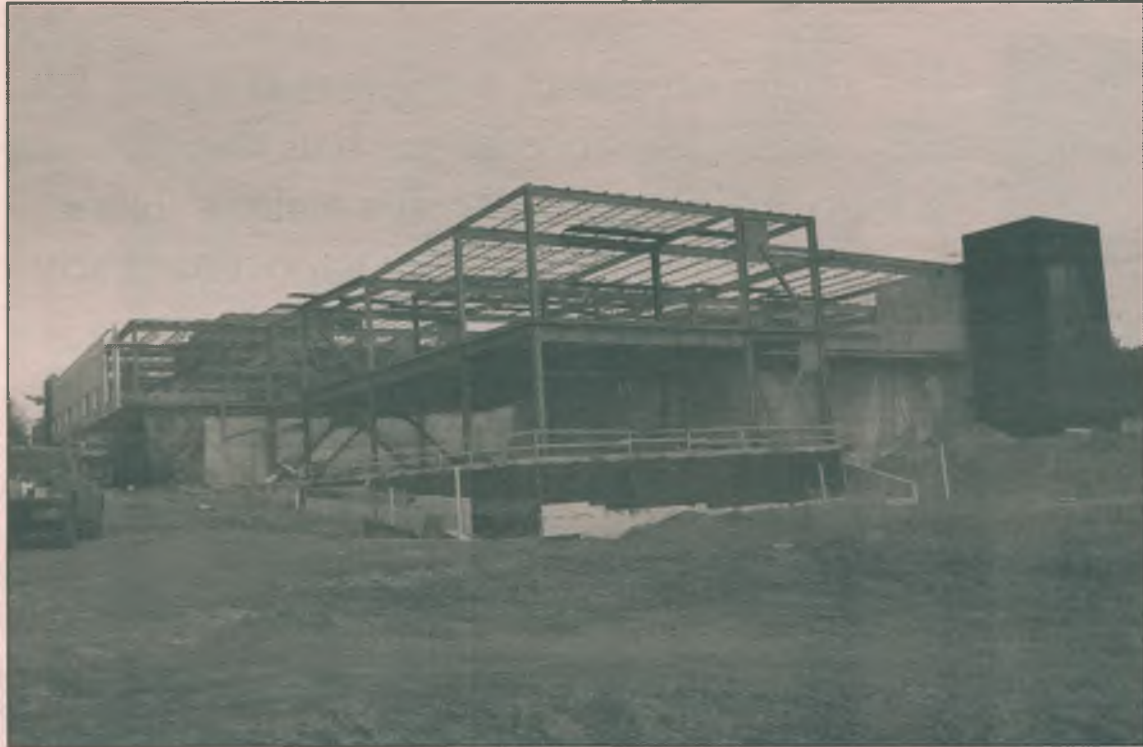
**Lipscomb
Bisons
defeat
Cougars**
See Sports



Thursday, December 11, 2008

www.alestlelive.com

Vol. 67, No. 31



Derrick Hawkins/Alestle

The Student Success Center is expected to be completed June 18, 2009 and will open for use next fall. The 68,000 square foot building is located next to the Morris University Center.

Halfway to Success Center

The \$16.6 million budget is on schedule

by Neal Gough
Alestle Correspondent

Campus improvements are an ongoing process around SIUE and one of the most notable is the large Student Success Center being erected right next to the Morris University Center.

According to Assistant Vice Chancellor for Student Affairs Lora Miles, the 68,000 square foot building is scheduled to be open for use this upcoming fall semester.

"We are going to move all of the student and academic support services to that building," Miles said.

Career development, Student Opportunities for Academic Results resources, Academic Advising and Disability Support Services are among the services that will be consolidated into the new building.

Campus Architect Rick Klein said an unexpectedly large amount of rain at the beginning of the summer set things back a little. However, barring any further unanticipated weather circumstances, Klein does not expect any more

delays in construction.

"Generally speaking, the project is going well," Klein said.

Assistant Vice Chancellor for Administration Rich Walker said the construction was a bit behind schedule, but overall it would not be too detrimental to the construction.

"Right now we are about two weeks behind schedule, but we are optimistic that we will be able to get back on schedule once the building is enclosed and the weather is no longer an issue," Walker said.

Completion on the building is scheduled for June 18, 2009 so everything can be moved into the building over the summer. The offices should be open by the Fall 2009 semester.

Walker said the \$16.6 million budget is also on schedule, and he fully expects that everything will be finished within the stated goal.

In addition to freeing up space for classrooms in adjacent buildings, the new building will provide new services for students. According to Miles, the

CONSTRUCTION/pg.4

Science building construction delayed

Economic downfall could effect current plans

by Allan Lewis
Alestle Reporter

While the floors of an aging science building are beginning to buckle, no replacement is imminent, according to Facilities Management Director Bob Washburn.

The funding for the proposed replacement of SIUE's current Science Building is

connected to the Illinois Works Bill, which has been under consideration by the Illinois General Assembly.

While the proposed bill would provide \$75 million for SIUE and the science building, its movement has remained dormant in recent months. While university budget cuts will not have an effect on the movement of the bill, Rich Walker, assistant

vice chancellor for administration, said he was uncertain if the current state of the economy and corruption charges against Illinois Gov. Rod Blagojevich would affect the funding.

"I wouldn't speculate to guess on whether or not those will affect it," Walker said. "We are awaiting the construction funding through the capital bill.

SCIENCE BUILDING/pg.4

Blagojevich arrested for corruption

Illinois governor charged for trying to sell Obama's Senate seat

by Jeff Coen, Rick Pearson,
John Chase and David Kidwell
Chicago Tribune (MCT)



Nancy Stone/Chicago Tribune/MCT

Illinois Gov. Rod Blagojevich holds a press conference at the James R. Thompson Center in Chicago. On Tuesday, Blagojevich was arrested on corruption charges.

Most shocking are the details that emerged Tuesday in a 76-page arrest affidavit — mostly in the governor's own secretly recorded and profane words — that authorities say laid bare his most tightly held and incriminating conversations.

Blagojevich, who turned 52 on Wednesday, was elected twice on vows to reform the culture of corruption that engulfed his predecessor, Republican George Ryan. But after years of well-publicized federal corruption investigations that touched almost every aspect of his administration, in the end it was 45 days of explicit wiretaps that spurred authorities to act swiftly.

The governor and his chief of staff, John Harris, were simultaneously charged with conspiracy to commit wire fraud and solicitation to commit bribery as part of a wide-ranging alleged scheme to shakedown campaign donors and politicians for high-paying posts and millions of dollars in campaign contributions.

Allegedly for sale: state jobs, state contracts and regulatory favors. In one surreal development, prosecutors alleged Blagojevich even tried to get editorial writers from the Chicago Tribune fired in

BLAGOJEVICH/pg.2

The predawn rousting of Gov. Rod Blagojevich from his Ravenswood Manor home Tuesday marked a stunning climax to a tale of alleged public corruption unmatched in Illinois' storied history of elected scoundrels and thrust the state into an unprecedented political crisis.

Illinoisans awoke to news that their governor had been arrested, handcuffed and hauled before a federal magistrate on sweeping charges he conspired to sell his office many times over — including putting a price on the U.S. Senate seat vacated by President-elect Barack Obama.

U.S. Attorney Patrick Fitzgerald said the governor's actions forced his office to intervene.

"Gov. Blagojevich has been arrested in the middle of what we can only describe as a political corruption crime spree," he said. Fitzgerald said Blagojevich's "conduct would make (Abraham) Lincoln roll over in his grave."

The governor was released on his own recognizance and walked out not only free, but still empowered to make an appointment to the Senate seat federal prosecutors say he tried to corrupt.

Throughout the day, the halls of state government in Springfield and Chicago were humming with calls for his resignation or impeachment, and lawmakers planned an emergency session to schedule a special election and to strip the governor of his authority to fill the Senate post.

Even for a public with a jaded view of Illinois politics, the arrest of a sitting governor on such audacious charges left many questioning who was in charge of a dysfunctional state government.

BLAGOJEVICH

from pg. 1

exchange for helping parent Tribune Co. with a state plan to purchase Wrigley Field.

The charge Fitzgerald said represented Blagojevich's "most cynical behavior" was the governor's alleged effort to sell the Senate seat.

The affidavit quoted the governor on a telephone call the day before Obama won his historic presidential victory talking about driving a "hard bargain." Blagojevich called the Senate seat "a (expletive) valuable thing. You just don't give it away for nothing.

"I've got this thing, and it's (expletive) golden, and uh, uh, I'm not just giving it up for (expletive) nothing," he said two days later, according to the affidavit.

Among the prizes Blagojevich envisioned were a position in Obama's cabinet, an ambassadorship, a \$300,000 job with a union-backed group, even a highly paid position for his wife, first lady Patricia Blagojevich.

In one recording, the governor expresses frustration at his inability to have his offers considered and refers to Obama in extremely crude language: "(Expletive) him. For nothing? (Expletive) him."

Prosecutors said Blagojevich gave serious consideration to appointing himself to the Senate seat, believing himself to be "stuck" in his job as governor. Recordings, according to the affidavit, showed Blagojevich thinking about going to the Senate to avoid potential impeachment in Springfield and to try to remake his image for a possible 2016 run for the presidency.

The president-elect said Tuesday he had no conversations with Blagojevich about his successor in the Senate. But he would not answer whether any of his aides had discussions with a governor looking for an opportunity to deal. Fitzgerald said prosecutors were making "no allegations that (Obama was) aware of anything."

News can be reached at news@alestlelive.com or 650-3527.

What do you think about the arrest of Gov. Blagojevich?



"I'm a little surprised, but not that upset. It's been a long time since he has had respect from a lot of his constituents. It's really a shame that he would disgrace the Democratic Party and the state of Illinois..."

-Mike Hauser

sophomore, mass communications major



"I think it's horrible that he would stoop so low and try to make a mockery of our political system."

-Amanda Pfister

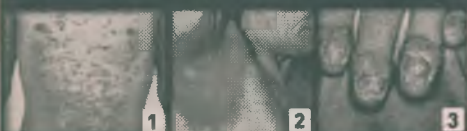
graduate student

on alestlelive.com

Let us know what you think about Gov. Blagojevich

Look familiar?

Psoriasis often strikes between the **ages of 15 and 25.**



1. Guttate psoriasis on chest
2. Inverse psoriasis in armpit
3. Psoriasis of the nails



Get informed at www.psoriasis.org.

Member FDIC

TheBANK
of Edwardsville

Join the Club! | **Cougar**
CLUB

www.cougarbanking.com

Cougar Banking Center

MORRIS
UNIVERSITY CENTER

Santa Has Great Gifts!

Stop By Today To Pick Up Your Gift!

Available While Supplies Last.



COUGAR BANKING WITH COUGAR PRIDE

Board of Trustees to discuss Geographic Enhancement Program

by **Kenneth Long**
Alestle Sports Editor

The Southern Illinois University Board of Trustees will recommend their Geographic Enhancement Program for both SIUE and Southern Illinois University Carbondale for approval by President Glenn Poshard at their next meeting at 9 a.m. Thursday at SIUC.

Dave Gross, executive director for Governmental and Public Affairs for SIU, said the proposed policy will target out-of-state "high achieving" students with lower tuition rates. The proposed tuition rate for students qualifying for the program will reduce tuition rates from 2.5 times the Illinois rate to 1.2 times.

"Currently if you're out of

state, you're paying over twice as much," Gross said. "(The program) allows us to pursue students with high academic standards (from other states)."

Director of Public Affairs Greg Conroy said the program was prompted by SIUE's music program to help attract "high achieving/talented" students to SIUE.

"You can get residency (in Illinois) fairly quickly, usually within six months," Conroy said. "That first half year is pretty tough, though."

The board will also discuss the approval of replacing roofs at seven buildings on SIUE's campus.

The buildings included in the estimated \$4.8 million roof replacement project include Founders Hall, Alumni Hall,

Dunham Hall, the Vadalabene Center, the Supporting Services building, Rendleman Hall and the 200 Building in University Park.

Conroy said the new roofs were put off for a few years and will not be impacted by the expected budget cuts for SIUE.

Also on the agenda is the Turf Replacement Project at Korte Stadium Contract. If approved, it will be awarded to Mondo USA Inc.

The project, just over \$1 million, will replace the natural turf at Korte Stadium with a synthetic turf. Conroy said the new turf is part of an upgrade to SIUE facilities for Division I sports.

Kenneth Long can be reached at klong@alestlelive.com or 650-3527.

Senate to discuss an array of topics Friday

Alestle Staff Report

It will be a festive holiday atmosphere when Student Government meets Friday around the Christmas tree in the Morris University Center's Goshen Lounge.

Numerous items are on the Senate's agenda, including annual non-traditional student awards, approving the bylaws of the Finance Board Funding Review Sub-Committee and looking over the student organization constitutions of Phi Beta Sigma and Students for a Free Tibet.

The Gay-Straight Alliance will be asking the

Senate for \$550 in travel funds to attend an annual conference, while the Senate will mull over three program requests from the Recreational Sports Advisory Council, the African Student Association and the Chemistry Club.

Patrick Hundley, the vice chancellor for University Relations, will visit with the Senate as a guest speaker.

Students will also be able to address the Senate through an open forum.

The meeting is scheduled for 2 p.m.

News can be reached at news@alestlelive.com or 650-3527.



Hollywood ★ Tan

**30 Days for \$25
Two Mystic Tans
for \$25**

8 visits for \$19.99

656-8266

Located next to Denny's in front of Wal-Mart • www.hollywoodtanco.com

Get the gift that lasts 3 years!

Keep Emergency Contraception in your medicine cabinet – just in case. It lasts up to 3 years and can help if:

- The condom broke
- You missed a pill or two
- You simply forgot

Safe, easy & inexpensive – available at Planned Parenthood *without an exam.*



Planned Parenthood®
of the St. Louis Region

1.800.230.PLAN | plannedparenthood.org/stlouis

NEWS-FLASH FINALS BASH

Tuesday
\$3.00 Pitcher



Wednesday
\$1.50 Bottles

Thursday
\$2.00 Pitcher
All Day Tent Party



**Lots More Drink Specials
Shenanigans**



Most Loved Lips



Most Loved Eyes

2 for \$30.00

10% Off
w/student ID

Be my friend on facebook and learn of other great deals

Donna Marie Sheard
Independent Sales Representative/Owner

Store Hours:

Mon, Wed, Fri- 9 a.m. to 5 p.m.
Tues, Thurs- 9 a.m. to 7 p.m.
Sat- 9 a.m. to 4 p.m.
Sun- 10 a.m. to 2 p.m.

618-656-1616
235 N. Main Street

avononmain@sbcglobal.net
Edwardsville, IL 62025

O Christmas Tree



Sean Roberts/Alestle

Senior psychology major Holly Scheuchner from Trenton, junior English major Courtney Brinkmann from Duplo and junior sociology major Michelle Sims from Mt. Prospect talk in their Evergreen apartment next to their Christmas tree.

STUDENT SUCCESS CENTER

from pg. 1

Student Success Center will contain a computer lab for students, smart seminar rooms, large and small meeting rooms and a coffee café.

"Hopefully (the building) will be 24/7," said Miles. "It will also have the latest technology."

What this potentially means for students is easier access to classes that normally fill up quickly, as well as an extra computer lab.

Freshman nursing student Lauren Jordan of Richmond said a 24-hour building was a good idea.

"I wouldn't have to wait for certain hours, I could go when it was convenient for me," Jordan said. "It will be convenient to have it all in one building instead of scattered."

Neal Gough can be reached at ngough@alestlelive.com or 650-3527.

SCIENCE BUILDING

from pg. 1

The current Science Building has been a part of SIUE since 1965, and Washburn said the building has been showing its age for years.

"It's not getting any better," Washburn said. "It is 43 years old, and there are a lot of issues with it."

According to Washburn, the building has flaws in its exhaust and ventilation systems, as well as its electrical and plumbing systems.

"We are trying to keep it running until something happens with a new building," Washburn said. "It is a critical need to the university, and since we have a requirement for students to take a lab, the extra space is needed."

Washburn said the building is a constant maintenance liability and is beginning to see structural troubles.

"The building is an ongoing maintenance issue," Washburn said. "We have an issue right now there the floor is buckled, and structurally the building has some issues."

Chemistry Chair Bob Dixon said not much has changed over the years, and a new facility is a top priority to keep up with enrollment.

"We are in the same situation we have been in for the past three years at this university," Dixon said. "A new biology lab was just added in University Park to meet increased demand."

Dixon said students would be hard-pressed to find a time a lab is not being conducted in the current building, and enrollment

trends do not offer relief.

"Chemistry is running labs Monday through Sunday from 8 a.m. to 10 p.m.," Dixon said. "Enrollment is increasing, and more burdens may be placed on us in the future."

SIUE, according to Washburn, is not alone in its quest for government capital funds.

"There is a horrendous backlog on campuses nationwide which require maintenance and rebuilding," Washburn said. "We have passed through the legislative liaison, and this project is ready to go."

If the state funded bill does not pass, Washburn said help from the federal government is a possibility.

"The federal government is working on a federal job stimulus bill, and President-elect Obama is planning on large public works issues, which includes schools, and we hope universities," Washburn said. "That could be one of our better hopes."

While the fate of a new science building remains in question, Dixon said the university has to work with what it has.

"Even if we got the money today, it would still take three years to get the new building up and running," Dixon said. "The university is not going to remain stagnant, and we will do everything we can to make the most out of the facilities we have."

Allan Lewis can be reached at alewis@alestlelive.com or 650-3527.

ONE OF TIME MAGAZINE'S 100 BEST NOVELS

WATCHMEN

ALAN MOORE
DAVE GIBBONS

THE RUNAWAY BESTSELLER!

SIUE Students
10% Off
with ID

dccomics.com

©, TM & © 2008 DC Comics. All Rights Reserved.

Available at:

Heroic Adventures
2131 S. State 157
Edwardsville, IL 62025

SIUE
CAMPUS RECREATION

618-650-BFIT
WWW.SIUE.EDU/CREC

Accepting donations in these drop off locations: SFC, Career Development Center, and Evergreen Hall.

Now through December 14th.

Toys must be new and unwrapped for donation to be accepted.

INTRAMURAL EARLY REGISTRATIONS

Basketball & Roller Hockey

Why wait? Get signed up today for next semesters first Leagues.

Sign up at the SFC Front Desk

MASSAGE THERAPY

PRICE	Students:	1/2 hour - \$25.00
		1 hour - \$35.00
	Faculty/Staff/	
	Alumni/SFC Men:	1/2 hour - \$35.00
		1 hour - \$45.00

For more information or to schedule an appointment, call the Wellness Center today at 618-650-2935.

The Alestle
Alton · East St. Louis · Edwardsville

Editorial Board:

Catherine Klene
Editor in Chief

Holly Meyer
Managing Editor

Erika Helmerichs
Opinion Editor

Sydney Elliot
A&E Editor

Kenneth Long
Sports Editor

June Farley
Photo Editor

Katie Patterson
Chief Copy Editor

Karina Swank
Jeffrey Mason
Amanda Neudecker
Copy Editors

Ashlee Glover
Advertising Manager

Brandy Bearden
Advertising Representative

Rachel Hutchens
Josh Vories
Graphics/Production

Mike Genovese
Graphics Supervisor

Rami Moussawi
Graduate Assistant

Debbie Roberts
Office Manager

Brittany Thomas
Josalin Wills
Deborah Helmink
Office Secretaries

Tammy Merrett-Murry
Adviser

Letters to the Editor Policy:

The editors, staff and publishers of the Alestle believe in the free exchange of ideas, concerns and opinions and will publish as many letters as possible. Letters may be turned in at the Alestle office located in the Morris University Center, Room 2022 or via e-mail at opinion@alestlelive.com.

All hard copy letters should be typed and double-spaced. Letters should be no longer than 500 words.

Please include phone number, signature, class rank and major. We reserve the right to edit letters for grammar and content. However, care will be taken to ensure that the letter's message is not lost or altered.

Letters to the editor will not be printed anonymously except under extreme circumstances.

We reserve the right to reject letters.

About the Alestle:

One copy of the Alestle is no charge. Additional copies cost 25 cents.

The Alestle is a member of the Illinois College Press Association, the Associated Collegiate Press and U-WIRE.

The name Alestle is an acronym derived from the names of the three campus locations of Southern Illinois University Edwardsville: Alton, East St. Louis and Edwardsville.

The Alestle is published on Tuesdays and Thursdays during fall and spring semesters and on Wednesdays during summer semesters. For more information, call 650-3528.

Have a comment? Let us know!

Send us an e-mail:
opinion@alestlelive.com

The Alestle
Campus Box 1167
Edwardsville, Ill. 62026-1167



AlestleView: Budget cuts destroy growth

A penny saved is a penny earned, right? Maybe not, following recent decisions made about state spending in Illinois.

On Nov. 26, the governor's office asked all state universities to reserve 2.5 percent of their state allocated funds for 2010, due to the recent economic recession. This request was made in hopes of continuing to provide state schools with the appropriate academic funding needed in future years. The downfall of this penny-pinching not only exists in the people it will potentially negatively affect through job losses, but also in the hold it will force on all extensive academic growth at SIUE and other state universities.

We must ask ourselves why the governor's office has made this request from schools, instead of from another state funded source. When did cutting academics become an appropriate response to any crisis, let alone one which can only be ameliorated with the promise of better judgment and intellect in the future generations? Why do college students deserve to suffer

the effects of an economic crisis they did not create?

The recently indicted governor should have shown better ethical practice and denied any calls for university budget cuts. He should have sought other areas for budget reserves, rather than our most valued commodity, state-funded education. Perhaps he is better aware of these insights now that he has time on his handcuffed hands, away from the proven corruption of Illinois state politics. Probably not.

Though a recent Alestle article mentioned SIUE's Budget Director ensuring no layoffs would occur in the 2009 fiscal year, there is no guarantee of such graciousness in future years. Once the state sees SIUE operating on less funding, even if the university is not actively developing or growing as a result, we will lose greater amounts of money each year. From the state's fiscal perspective, the less money we can operate on, the better, regardless of the need for growth in state academic institutions.

Graduates must "go forth and conquer"

Many graduates have heard the dreadful phrase, "It's going to get worse before it gets better." As Dec. 20 draws near, that is not what graduates want to hear as newly minted degree holders. While many graduates held full time jobs while working toward their degree, just as many are now finishing their programs to transition into the working world.

My advice to graduates is to seize opportunities. They may take you down a road that you have never imagined. A pot of golden peace of mind could be waiting for you at the end.

Now, many of first time real-world-goers may find themselves

in a catch-22, in which they do not have enough work experience to get the job, and no one wants to give you a break to get the experience you need. It will be frustrating, if you are not already frustrated.

Consider building your résumé through community service that will give you what you need. For example, if you are in public relations, volunteer to be on a communications committee at a non-profit. You will get the experience you need at your convenience. As you volunteer, remember you have to pay your bills. As my mother would say, "Do what you can do until you can do better."

As we wait for the economy to stabilize, graduates may be prone to hit a brick wall. Everything around them may not always go their way. Even as you become broke, busted and disgusted there is something to

Just last week the Alestle ran an article telling of salary increases for both the president of SIU and chancellor of SIUE, individuals already making nearly \$300,000 every year. Both of these individuals are paid out of state pockets, leaving us to question the logic of implementing budget cuts alongside salary increases.

It seems evident that the governor's office should have weighed the value of an exemplary education in Illinois against the broadening of the gap between the wealthiest and poorest state citizens. There could have been a call for a rise in homeowner's or state taxes, or cuts could have been made in other, less socially beneficial state agencies. With no economic change or reverse judgment in sight, we must make the best of budget cuts and hope that this reduction in university spending does not create a downward spiral in academic funding in the future.

Alestle Editorial Board

be learned in your trials and tribulations. This will be a time to evolve as a person. "What doesn't kill you will make you stronger." Remember, it's not about what happens to you, it's about how you react to what happens to you.

In conclusion, as your Trustee for Student Government, I look forward to shaking each and every one of your hands someday. You have worked hard for your educational goals. If no one comes to see you walk across the stage, then, who cares? You should be proud of yourself and that is who should care the most. If no one else tells you, then let me say, I'm proud of you.

Now, go forth and conquer.

Amber Suggs is a public administration graduate student from Paducah, Ky. She can be reached at ladydysuggs@yahoo.com.

Governor could not pass his own ethics test

Illinois Gov. Rod Blagojevich signed The State Officials and Employees Ethics Act on Dec. 9, 2003, requiring all state employees, including university employees, to take regular ethics training.

Perhaps Blagojevich should have carefully read through his own legislation because he might have missed something.

Tuesday, federal agents arrested Blagojevich for allegedly attempting to sell President-elect Barack Obama's vacant Senate seat.

In light of these recent allegations, I have to wonder if Blagojevich properly took his own ethics training test. If a state employee like myself were to answer too many questions incorrectly, misunderstand state laws requiring contracts or take it too quickly, I could lose my job.

But Blagojevich's "political corruption crime spree," as described by U.S. Attorney Patrick Fitzgerald during a press conference, did not seem to automatically disqualify him for governorship. Why should student workers have to take regular ethics training in a predetermined amount of time set by the bureaucrats, most of which is completely irrelevant to us, when our last two governors themselves have been accused of federal crimes?

It does not seem as though an ethics training test completion certificate signed by Blagojevich each year is worth much. The ethics training test apparently did not stop our fine governor, so why should student workers have to take an ethics test signed by our unethical governor, particularly when we have no Senate seats to sell?

Sean Roberts is a sophomore CMIS major from Port St. Lucie, Fl. He can be reached at 650-3527.



Sean Roberts

Have an opinion? Want to have your voice heard? Write a letter to the editor!

opinion@alestlelive.com

New wave of eco-friendly fashion

Student, professional designers featured in "green" fashion show

by **Jeremy Clinton**
Alestle Reporter

"The Green Fashion Show" was about fashion and the consumer, but the message was for people to become more aware of the clothes they wear and what it took to make them.

Fashion with sustainability was presented Tuesday night in Bluff Hall. The show offered residents and members of the community a demonstration of the designers' taste in an eco-friendly way.

Lori Allen, fashion designer and owner of Chartreuse Boutique, spoke about the dangers of buying foreign made products because of the manner of how they were made and the horrible working conditions people are put through that work in the factories.

"Americans have always been consumer based," Allen said. "What they fail to realize is the injustice that is taking place in the creation of what they are wearing. The problems with labor laws and the chemicals put into our clothes are horrible."

Allen asked the audience to think of their values the next time they were shopping.

"It's one thing to shop, it's another to shop smart," Allen said. "Ask yourself do you really need this? What are they trying to sell me?"

The show continued to inform the public on the campaign to spread awareness about fashionable ways to be green.

The first to display his collection was senior biomedical science major Joel Buaza. He showed his environmentally friendly wardrobes made out of odds and ends of other bits of clothing.

"What I'm trying to portray to the public is more into using longevity items rather than resorting to buying short term items that will last maybe a couple of months," Buaza said.

"The dresses are made by combining pieces of other wardrobes to create something new."

Another designer, freshman costume design and construction major Joanna Fiore, presented her pieces.

"I think that the organic approach is good, so I try to use what already is available in nature to create my pieces," Fiore said. "Simply, I wanted to do pieces with a bird theme. They are what inspired my creation, and they are interesting to me."

Fiore's wardrobe pieces were in representation of a raven, a dove and a rooster. All the pieces had feathers on them and were made from multiple articles of clothing.

For the show's finale, Allen presented works and lines of clothing that she carried in her store and what she had to give back to a community that she feels has been affected by the "consumer society." She stressed the simplicity in what she presented and how it was all in the best mind for the consumer.

"These wardrobes are simple and have been made in America with labor laws and other enforcements that are good for the consumer," Allen said.

The event was managed by a host of students. Senior political science major Brittney Barr was in charge of recruiting the models and helping to get the show to the point of production.

"We are very proud of this event. It's been two months in the making," Barr said.

Allen is creating a Web site for more information on eco-friendly designs and to sell eco-friendly clothing as well. Allen suggested going to www.centernewamericadress.org for more information.

Jeremy Clinton can be reached at
jelinton@alestlelive.com or 650-3531.



Derrick Hawkins/Alestle

Freshman YaShure Tucker models some of the eco-friendly fashions by designer Lori Allen shown Tuesday night during "The Green Fashion Show."

Early holiday shopping



Derrick Hawkins/Alestle

A craft fair took place in the Morris University Center's Goshen Lounge Dec. 3. The SIUE community had a chance to start holiday shopping early.

'Tis the time to celebrate the Christmas season

by **Lindsay Dunham**
Alestle Reporter

Christmas is usually characterized by Santa Claus, reindeer, cookies and trees with presents under them, but for some students, Christmas is celebrated in a different way.

For Russian international student Ksenia Petrova, Christmas is celebrated on Jan. 1, and the celebration is a combination of Christmas and New Year's. Although there is still a Christmas tree involved, Petrova said the gifts that are left under them are delivered by Father Frost and his helper, Snegurochka.

Snegurochka, which means "snow maiden" in English, is the granddaughter of Father Frost. Father Frost, like

Santa Claus, wears red and white, but does not wear a belt. Instead, Father Frost wears a long red coat. Snegurochka wears light blue and white. Together they deliver presents, not with reindeer, but with white horses, according to Petrova. Petrova said on Jan. 1 she and her family would often go into town where ice was laid for the enjoyment of the people.

"We have ice down in the city where you can go sliding," Petrova said. "It's very fun."

Petrova said that while the "traditional" Christmas celebrations happened on Jan. 1, Christmas day is actually Jan. 7 in Russia. Christmas on Jan. 7 is more religious, according to Petrova. Families go to

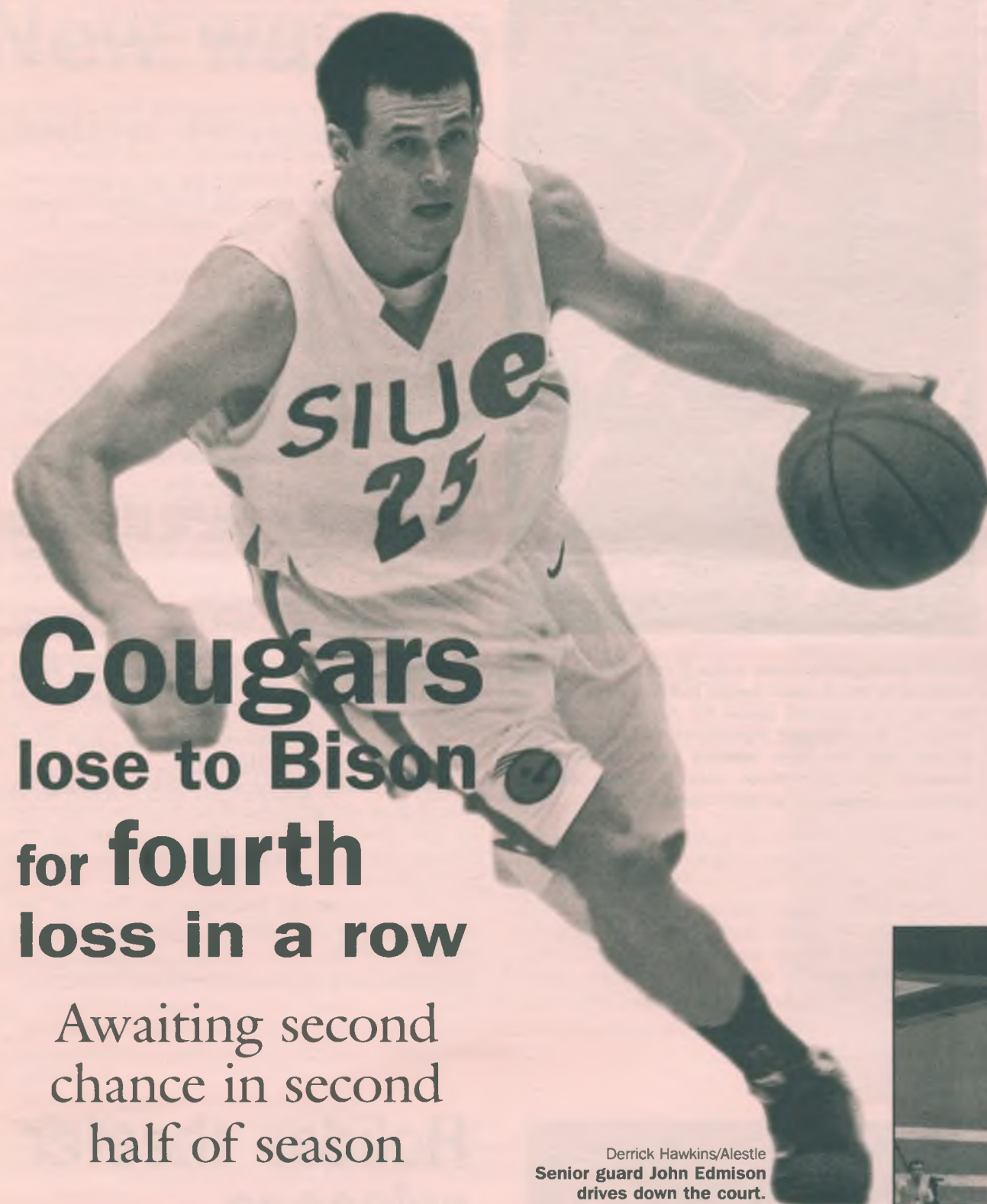
church together and then have a large meal together, but no gifts are exchanged.

According to www.russiansantas.com, the reason for the two different days of Christmas celebration dates back to the Bolshevik Revolution in 1917, where Lenin created an atheist society that banned Christianity and banished Father Frost. Because of this, New Year's Day became the winter holiday celebrated with gifts. Years later, Father Frost was allowed into the Russian society again, but families continued to celebrate with Christmas trees and presents on Jan. 1, leaving the original Christmas, Jan. 7, for church and family time

CHRISTMAS/pg. 7

by Ben McDonald
Alestle Reporter

“Underworld: Rise of the Lycans”



Cougars lose to Bison for fourth loss in a row

Awaiting second chance in second half of season

by T.J. Cowell
Alestle Reporter

Poor shooting plagued the Cougars all night as they dropped their fourth decision in a row on Tuesday to the Lipscomb University Bison 70-47.

SIUE, now 2-8 on the season, shot a mere 29.3 percent from the field and are still winless since a 106-53 victory over Division III Blackburn College on Nov. 22.

The Cougars hit 17 of 58 for the game and were seven of 22 from three-point range. Host Lipscomb also struggled shooting the ball in the first half, but bounced back in the second 20 minutes, going 13 of 23 from the field.

"We competed well, but in spurts," freshman guard Mark Yelovich said. "We are getting some good experience playing these D-I schools. We are competing at times, but it just was not there tonight."

SIUE drew blood first with senior guard John Edmison's lay-

up, putting the visiting Cougars ahead, 2-0. Edmison's lay-up would mark SIUE's only lead that night as Lipscomb soon took control.

The Cougars only managed to score 14 points in the first half and headed into the locker room at halftime, 25-14. Edmison led the Cougar attack with five points in the first half.

The struggling Cougars showed a bit of life coming out of the locker room after a three-pointer from Yelovich sparked a 11-0 Cougar run. SIUE would manage to cut the Bison's lead down to four points on a tip-in by Edmison with 15:33 left to play.

"We need to take things out of the last two games that were positive and execute the things that make us successful," SIUE men's basketball Head Coach Lennox Forrester said.

Lipscomb answered with a 15-0 run of its own. The Bison would stretch their lead by as much as 25 in the second half. SIUE was forced into 15

turnovers on Tuesday, compared to Lipscomb's 9. The victory evened Lipscomb's record to 4-4 on the season.

Yelovich headed the SIUE effort with a game high 16 points. Yelovich and sophomore center Nikola Bundalo both led the Cougars with six rebounds. Junior guard Barry Wellington was the only other player for SIUE to finish in double figures with 11 points.

Wellington said the lull in the upcoming break will give the team a chance to recover. "These two weeks will be good for us," Wellington said. "It will give us time to work on what we need to get better at."

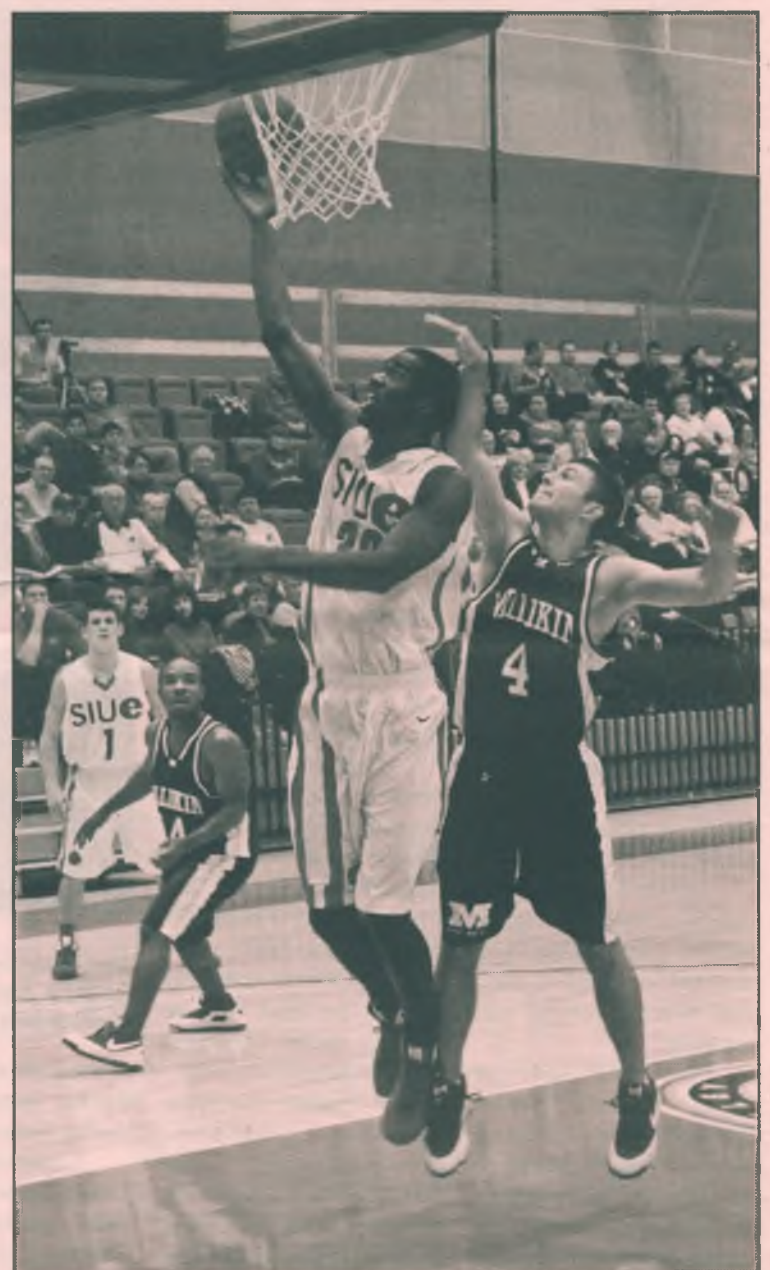
Senior guard Michael Lusk and sophomore center Adnan Hodzic each collected 14 points for Lipscomb. Hodzic completed his double-double with 12 rebounds, which led all players. The Bison's boasted 56.5 shooting percentage and were 16 of 18 from the line in the second half.

MEN'S BASKETBALL/pg.10



Derrick Hawkins/Alestle

Freshman guard Aaron Garriott takes a leap for a basket during the game against Millikin University.



Derrick Hawkins/Alestle

Freshman center Terrance Williams stretches for a score just inches away from the net at Tuesday's game. The next men's basketball's game will be Dec. 22.

Volleyball has brains and brawn in Division I

by Allan Lewis
Alestle Reporter

In SIUE's first year of reclassification to Division I, the performance of two volleyball players on and off the court has not gone unnoticed.

Senior setter Mallory Clements, a business administration major from Mt. Pulaski, and senior middle hitter Samantha Schulte, a senior speech pathology major from Kenosha, Wis., ended their season and careers with post-season honors, representing SIUE in ESPN Magazine's Academic All-Americans.

"It is a tremendous accomplishment," volleyball Head Coach Todd Gober said. "Here are two young ladies who have finished their careers, and this is one more accomplishment for their résumés."

Both players exemplified excellence on and off the court on the way to national recognition. Clements maintained a 3.94 GPA during the season, and owns school records in service aces, with 182, and triple-doubles which are double digit performances in three offensive categories with 20.

Clements finished her career with 830 kills and 4,311 assists, good for second all-time in a Cougar uniform. This is the second Academic All-American award for Clements, also earning one at the Division II level.

Schulte earned a 4.0 GPA and put down 556 kills in two seasons at SIUE.

Schulte played at Northern Michigan University before coming to play for the Cougars.

"At first, it didn't really hit me how much this honor meant for not only me, but the school as well," Clements said. "I was extremely thrilled and honored to be represented next to girls that play for the top five volleyball programs in the country."

Clements was mentioned alongside the likes of Cynthia Barboza of Stanford University, Kori Cooper and Amanda Gates of the University of Nebraska and Christa Harmotta of Penn State University as first team Academic All-Americans.

Stanford, Nebraska and Penn State are among the top five seeds in this season's NCAA Tournament, with Penn State returning as defending champion.

Schulte was honored on the third team, with conference-mate Molly Davis of Southeast Missouri State University.

"It is one of the most prestigious honors I have had," Schulte said. "Academics have been important, and while balancing with volleyball has been tough, I have accomplished that."

Gober said both Schulte and Clements are looking to explore Master's degrees.

"These awards are not only a

testament of our volleyball program, but also our athletic department and our school," Gober said.

Schulte said she has applied to seven schools, including SIUE, in order to continue her education and head into the career field.

"I have about three years in grad school, and then a fellowship to be certified as speech pathologist," Schulte said.

"I was extremely thrilled and honored to be represented next to girls that play for the top five volleyball programs in the country."

-Mallory Clements,
senior setter

Clements said she also plans on continuing her education and will look into prolonging her playing career on the beach.

"I have definitely been looking into obtaining my MBA and that has been a goal of mine since I started college," Clements said. "I also want to try out playing sand volleyball if that opportunity arises."

Reflecting on his team's first season competing as a D-I

school, Gober said he was proud of his athletes' accomplishments, academically and athletically, as the Cougars move toward the future after a 13-14 campaign.

"What a fun year," Gober said.

"Playing at Illinois and Mizzou, and our kids on postseason awards lists. It's a different world."

Proving athletes can earn recognition

for their studies is a quality of the award Clements does not want to see go unnoticed.

"It helps everyone realize we know how to work hard outside of the athletic arenas," Clements said. "It reminds everyone we have academic responsibilities just like normal college students, and that we have to work hard for our grades, too."

Gober said the honors go a long way in building toward the future and attracting potential recruits.

"SIUE has a very good academic reputation," Gober said. "Having academic All-American's gives you a boost talking to recruits that come in with high ACT's and aggressive majors. We put a lot of emphasis on academics, not only in volleyball, but the department as a whole."

Schulte said the award reflects the SIUE Athletic Department's academics-first mentality and will help build the program.

"I feel this is going to be awesome for the university recruiting," Schulte said. "They push all of their athletes to do well in school, and this reflects their effort."

Gober said the Athletic Department and the school's professors deserve credit.

"It is our department that has mechanisms in place to ensure academic success," Gober said. "I also give credit to professors for their cooperation, allowing some players to take tests on the road or early. We couldn't do it without them."

Allan Lewis can be reached at
alewis@alestlelive.com or 650-3524.

Anderson Hospital
ExpressCare
Open Daily 10 a.m. to 8 p.m.
Caring for life's everyday illnesses & mishaps.
Quick & Convenient
Less costly than an ER visit! *
Off Route 157 in Glen Carbon
656-9777

Sundazzlers
You have tried the rest, now tan with the BEST!
1 week unlimited \$10
1 Month Unlimited \$25
Expires 12/31/08
Hot New Bulbs!
Open 7 Days A Week!
First Tan is Always Free!
Call 656-UTAN (8826)
6455 Center Grove Rd., Suite 101 • Edwardsville, IL 62025

Save TIME! Save Money!
Place your textbook order on-line now with the University Bookstore!
No long lines. No shipping charges.
Best chance of getting less expensive used copies.
New this semester- Lower prices on hundreds of textbooks!
Line for Textbooks
Visit www.sluebookstore.com today!

Pro women's soccer team to use Korte Stadium

by Levi Kirby
Alestle Reporter

The new and improved St. Louis Women's Professional Soccer team, the St. Louis Athletica, is set to play next season's home games at SIUE in Korte Stadium beginning in April of 2009.

In the 2003-2004 season the previous professional women's team from St. Louis was a part of the Women's Soccer Association and failed due to financial reasons.

Beginning in the 2009 season, St. Louis Athletica will be a member of Women's Professional Soccer, a new league for a new era of women's soccer in the St. Louis area.

Team President Caryn Chasteen said the organization does not want to call it a "re-launching" of the WSA team because they want to ensure fans it will be a completely different program.

"We have a new name, new commissioner and a new owner. There are similar cities involved, but (it's under) a new financial structure and business model," Chasteen said. "It is still professional women's soccer, and we are going to try and make sure this thing is around for a very long time."

The agreement between SIUE and the WPS to play at Korte Stadium was considered an exciting opportunity by both parties from the very beginning.

SIUE Assistant Athletic Director Sandy Montgomery said SIUE is excited to have the St. Louis Athletica playing on campus.

"We are looking forward to bringing a very high level of soccer to the area," Montgomery said. "It is certainly good for the sport and for the university."

The team was looking for a great partner because it is necessary to have a good relationship with the people who are running the stadium being played in, Chasteen said.

"There was never a question of 'If this was possible,' it was just 'How do we get this done?'" Chasteen said. "(Everyone) on the (SIUE) staff has been tremendously generous with their time and energy and excitement about the new league. It's very exciting to be a part of it."

Another aspect of the St. Louis Athletica playing at Korte Stadium next season is the possibility of drawing a large college fan base.

SIUE men's soccer Head Coach Kevin Kalish said there is a definite chance of increasing their fan base by playing on the SIUE campus.

"Having their team with thousands of students right in their backyard can never hurt," Kalish said. "Hopefully a lot of Cougar soccer fans can come out and help support the St. Louis Athletica."

Montgomery said the partnership should be a positive thing for both parties involved.

"We have a big fan base for soccer in the St. Louis area. (The St. Louis Athletica) have grand ideas for putting thousands of fans in the stands for their games, and we certainly hope that becomes a reality for them," Montgomery said. "Any time you bring visualization to your campus it is certainly good for the university as a whole."

Chasteen agreed with both Kalish and Montgomery about drawing a college fan base.

"I think there will be a strong support for us from college students," Chasteen said. "We're very encouraged from the response we've gotten from college students. We anticipate a huge following from the SIUE student body."

For more information about ticket prices, scheduling and team information, visit www.stl-wps.com.

Levi Kirby can be reached at lkirby@alestlelive.com or 650-3524.

MEN'S BASKETBALL from pg. 8

Lipscomb's bench came up big for the Bison, as they out scored SIUE 25-4 off the bench. The Cougars were also dominated in the lane as they were out scored 28-14 for points in the paint.

SIUE is off until Dec. 22, when they will travel to Chicago to take on the Loyola University Ramblers at 2 p.m. The next night, the Cougars will continue their road trip at Bradley University.

Forrester said this two week period with no games will give the Cougars the rest they need to recuperate for the second half of the season.

"We have played the last three games in spurts," Forrester said. "We have to get everyone on the same page."

T.J. Cowell can be reached at tcowell@alestlelive.com or 650-3524.

Black Heritage Month Student Talent Show

Informational Meetings and Auditions

SIUE students are invited to try out for the Student Talent Show. First place prize of \$100.00 will be awarded in the following categories: vocal/instrumental, dance, rap and poetry. Auditions will be scheduled every 20 minutes.

Informational Meetings

Thursday December 11	6:00 PM-7:00 PM	MUC International Room
Tuesday January 21	6:00 PM-7:00 PM	MUC Board Room

Auditions

Auditions will be scheduled every 20 minutes

Monday January 26	4:00 PM-8:00 PM	MUC Hickory/Hackberry Room
Tuesday January 27	12:00 Noon-1:00 PM	MUC Hickory/Hackberry Room
	6:00 PM-7:00 PM	MUC Hickory/Hackberry Room
Wednesday January 28	4:00 PM-8:00 PM	MUC Hickory/Hackberry Room
Thursday January 29	4:00 PM-8:00 PM	MUC Hickory/Hackberry Room

Contact LaShonda Milton
at 618.698.0087 or at lmilton@siue.edu
to schedule a day and time.

SIUE SCHOOL SPIRIT & PRIDE PRESENTS STAY STRESS FREE WEEK!!



Monday
December 15
Ball your Stress up!
Stress Balls in the Goshen
5 PM-7 PM



Tuesday
December 16
Melt the Stress away!
Massages in the Goshen
4 PM-7 PM

Wednesday
December 17
Freeze the Stress!
Ice Cream Social
5 PM-7 PM



Sponsored by Student Government

Hollywood ★ Tan

Free
Tans

Saturday
December 13th

*Specials on Mystic Tans
and Lotion*

Classifieds

12

www.alestlelive.com

Thursday, December 11, 2008

FOR RENT

READY TO MOVE OFF CAMPUS? Secure your housing for next semester. Spectacular 2 bed, 1.5 bath townhomes 1 mile from SIUE. Call today to see our homes. www.rentchp.com 692-9310

NEWLY REMODELED 2B/1B downtown Edwardsville 5 mins from campus. All appliances w/ d included. \$725mo plus deposit. 314-954-9171

DECEMBER SPECIAL 2bdrm/1 ba, stove, fridge, w/ d hkup, 15 min from campus. 525 mo. 400 dep. December free, move in with paid deposit. 980-3645

RENT REDUCED BY \$50/MO. Large 2BR APT. Bike to school. Walk to town. Older home, very private, nice neighborhood, Lg. front porch and patio in private back yard. Dishwasher. Basement, W/ D. \$630.00 618 406-2866

THREE BEDROOM HOUSE: including basement; central air. \$750.00 monthly call 618-444-2267

3BR, 2BA, NEAR DOWNTOWN EDW: DW, disposl; 1-car gar, bsmt rm, fncd yd; w/ fee pets ok, w/ d avail. Avail 1/1. \$975/ mo. 659-4872

GLEN CARBON MINUTES TO SIUE 2 Bedrooms start at \$625, 2 bedroom townhomes with 1.5 baths start at \$675, with basement \$740, 2 bedroom lofts start at \$675. All units have washer/ dryer hookups and MOST with deck or patio. For more information, please contact our office at (618) 346-7878 or visit our web site at www.osbornproperties.com 346-7878

2BR, 1.5 BA TOWNHOMES I-255/ Horseshoe Lake Rd. area. 15 min. to StL / SIUE. Includes W/ D, some utilities. No pets. No smoking \$600 mo. 618-931-4700. www.fairway-estates.net

4 BDRM, 2 BATH, 2 CAR GARAGE No pets, no smoking 10 min to SIUE. Available 12/15 \$1350/mo, \$1400 dep, \$50 credit check. 978-5044

HELP WANTED

SURVEY TAKERS NEEDED: Make \$5-\$25 per survey. Do it in your spare time. www.GetPaidToThink.com

DENTAL ASSISTANT / RECEPTIONIST If you are seeking a position w/ o exp this is your opportunity. Earn \$10-15 per hr starting. Consider a career as a dental professional. 11 wk training. Sats only. 618-541-6949

PART-TIME OFFICE HELP NEEDED. Flexible hrs. \$8 per hour. Call 659-9692.

EARN MONEY SELLING OUR MUSIC BECOME A LIVERPOOL DREAMS DISTRIBUTOR WWW.LiverPoolDreams.com

WANTED SIU FEMALE STUDENT to help with housework; SIU male student to do yard work, etc. call 656-9589 between 10am and 10pm

MISCELLANEOUS

DEATH NOTICE: Sadly reporting death of Karen Hornback (SIUE student).

Gathering January 17th. See Karen Hornback at 'virtual-memorials dot com' or lv msg at 206 364-0625.

FREE ELECTRONICS RECYCLING ESS Data Recovery invites you to recycle computers, hard drives, printers, and other electronics on December 13th, from 9AM - 4PM at their location at 110 North Research Drive in Edwardsville (on campus). Full details available at http://www.essdatarecovery.com/recycling_event.asp. No CRT monitors or televisions will be accepted.

ALPHA SIGMA TAU Sisters of the Week: Michelle Jenkner, for putting together a fantASTic pancake breakfast! Thanks for all your hard work. And to all the new alums we will miss you lots!! Tau love always!!

SIGMA PI Brother of the Week: Mark and Kyle for commencement. Nice job gentlemen! Burro of the Week: Bundy

for playing online Scrabble and Hova for having his father chauffeur him at informal. Fail.

ROOMMATE WANTED

2 BEDROOMS FOR RENT 4 BR, 2 1/2 BATH HOME. 5 MIN FROM SIUE. ONSITE LAUNDRY, SPLIT UTILITIES, \$300/ \$350. CALL 618-741-9413

ALESTLE CLASSIFIEDS GIVE YOU MORE!

Place your classified ad at a time convenient for you using our easy, secure online interface at alestlelive.com/classifieds

BASIC PRINT INSERTION RATES:

10 word minimum for all ads.
20 cents a word 1-2 insertions, per insertion
19 cents a word 3-4 insertions, per insertion
18 cents a word 5-19 insertions, per insertion
17 cents a word 20+ insertions, per insertion

Print Extras:

All bold, additional \$5

Web Extras Vary

Please schedule your ad carefully as we cannot offer refunds. Corrections must be noted by on the first day the ad appears in the newspaper.

Deadlines:

By 11 a.m. Monday for Tuesday issue
By 11 a.m. Wednesday for Thursday issue
Having trouble? Call 618-650-3528
or e-mail classifieds@alestlelive.com
Alestle Office Hours (MUC 2022):
9 a.m. - 4:30 p.m. Mon-Fri

Little Caesars®

HOT-N-READY CONVENIENCE

PEPPERONI LARGE PIZZA

MEAL DEAL

ONE LARGE PIZZA
CRAZY BREAD® 8 PIECE ORDER, CRAZY SAUCE®
PLUS a 2-LITER PEPSI®

VOTED
BEST VALUE
IN AMERICA

\$5.00 ORIGINAL ROUND
CHEESE OR PEPPERONI

AVAILABLE
HOT-N-READY
ALL DAY,
EVERY DAY!

\$9.00 ORIGINAL ROUND
CHEESE OR PEPPERONI

AVAILABLE
HOT-N-READY
ALL DAY,
EVERY DAY!

2100 Troy Rd. • Edwardsville

Kerasotes

Movies with Magic

FREE REFILL ON POPCORN & SOFT DRINKS

VISIT US ONLINE AT WWW.KERASOTES.COM

SHOWTIMES FOR DECEMBER 12 - 18

SHOWPLACE 12 — EDWARDSVILLE
AT ROUTE 159 & CENTER GROVE RD.
1-800-FANDANGO 1560#
ALL STADIUM SEATING—ALL DIGITAL SOUND

Join the Five Buck Club at www.fivebuckclub.net

MATINEE PRICING—ALL SHOWS BEFORE 6 PM

THE DAY THE EARTH STOOD STILL (PG-13) 12:50 1:20 1:50 3:30 4:00
4:30 6:10 6:40 7:10 8:50 9:20 9:50

DELGO (PG) 2:10 5:00 7:40 10:00

PUNISHER: WAR ZONE (R) 12:40 3:20 6:20* 9:00
*No 6:20 SHOW TUES, 12/16

FOUR CHRISTMASSES (PG-13)
2:20 5:10 7:50 10:20

AUSTRALIA (PG-13) 12:30 4:20 8:00

TWILIGHT (PG-13) 1:10 4:10 7:00 10:05

BOLT (PG) 1:30 3:50 6:50 9:10

QUANTUM OF SOLACE (PG-13)
1:40 4:40 7:20 10:10

MADAGASCAR: ESCAPE 2 AFRICA (PG)
2:00 4:50 7:30 9:40

ROLE MODELS (R) 1:00 3:40 6:30** 9:30
**No 6:30 SHOW WED OR THURS, 12/17 OR 12/18

GLENN BECK'S THE CHRISTMAS SWEATER
LIVE WEDNESDAY, 12/17, AT 7:00PM WITH AN ENCORE
SHOWING THURSDAY, 12/18 AT 7:00PM

American Diabetes Association®

Cure • Care • Commitment®

Diabetes Education Program

9 a.m. to 1:30 p.m., Saturday, January 31, 2009

Morris University Center

Southern Illinois University at Edwardsville

Enjoy speakers, vendor fair,
screenings and
FREE LUNCH!

Enjoy speakers, vendor fair,
screenings and
FREE LUNCH!

9 to 9:30 a.m.

Registration and Vendor Fair

9:30 to 10:30 a.m.

Opening Presentation

10:40 to 11:15 a.m.

Speaker Session 1

11:25 to Noon

Speaker Session 2

Noon to 1:30 p.m.

Lunch

Vendor Fair

Screenings

**FREE SCREENINGS: Foot
Exams, Blood Pressure,
A1c Testing**

(limited space, advance registration recommended)

To register, call Amy at (888) 342-2383, ext. 6835 or astephan@diabetes.org.

Speakers & Topics:

Keynote Speaker

Phyllis Shulman

A nationally touring comedian, she earned an Emmy Nomination for her television work and appeared in the Bill Murray movie "Larger Than Life." She travels the country with "Laugh It Off," bringing comedy to weight management and diabetes.

Speaker Sessions

Guim Kwon, Ph.D.

"Future Treatments for Diabetes"

Dwight McLeod, DDS, MS

"Oral Health and Diabetes"

Kate Petkewicz, Pharm. D.

"Heart Disease Risk Reduction"

Kelly Gable, Pharm. D.

"Depression and Diabetes"

Birgit Sterzl, RD

"The Simple Pleasures of Eating Well with Diabetes"

Sponsored in part by SIUE student activity fees & SIUE School of Pharmacy