

Index
 News1-4
 Opinion5
 A&E6-7
 Sports8-10
 Puzzles11
 Classifieds12

The Alestle

Alton - East St. Louis - Edwardsville

Drag show entertains crowd with wild performance
 See A&E



Tuesday, September 9, 2008

www.alestlelive.com

Vol. 67, No. 6

Three finalists for SIU vice president have been selected

SIU president expected to make decision Oct. 1

by **Kenneth Long**
 Alestle Reporter

The Southern Illinois University Internal Search Committee announced the names of the three finalists chosen for the vice president for Academic Affairs position last Wednesday.

Duane Stucky, chair of the search committee and senior vice president for Financial and Administrative Affairs, said the committee had a very large and qualified list of applicants for the position.

"We had a very strong pool to choose from, but these three people came out as our recommended candidates," Stucky said.

The three final candidates are Prudence Rice, associate vice chancellor and director for the office of Research Development and Administration, Paul Sarvela, dean of the College of Applied Sciences and Arts and David Wilson, associate dean and director of the graduate school.

Stucky said SIU President Glenn Poshard is expected to make his decision by Oct. 1.

Dave Gross, executive director for Governmental and Public Affairs, said the position is the top academic post in the SIU system.

"The (vice president) coordinates requests to the Board of Higher Education and communicates information from federal and state level on program changes to the campuses," Gross said.

John S. Haller Jr., the previous vice president for Academic Affairs, retired earlier this year after holding the position since September 1990.

Kenneth Long can be reached at klong@alestlelive.com or 650-3527.

Derrick Hawkins/Alestle
Fraternities in Morris University Center's Center Court discuss their fraternities with potential new members Monday afternoon. Many fraternities and sororities on campus are participating in Rush Week this week, the process of recruiting new members for their organizations.



RUSH week

by **Lindsay Dunham**
 Alestle Reporter

Senior speech communication major Justin Montgomery said he grew up spending time with his dad's fraternity members.

"We would hang out with them all the time," Montgomery said. "The fact that they spent so much time together made me want to be a part of something like that."

The desire to be involved with a tight-knit group made Montgomery decide to join Alpha Kappa Lambda his freshman year.

Greek life has existed on campus since the first sorority was started at the East St. Louis center in the 1960s. The rest of the fraternities and sororities came in the early 1970s, and there are currently 19 Greek organizations on campus.

This week begins the process of recruitment and rush for some of the Greek organizations.

While some sororities and fraternities each choose their own time throughout the semester to recruit, the other organizations are beginning the rush and recruitment process this week.

Senior Becky Turner is a member of Gamma Chi, a group of women with information on all sororities. They help women interested in joining a sorority through the recruitment process. Members of Gamma Chi cannot reveal

GREEK WEEK/pg.2

Collegiate Panhellenic Council

Alpha Phi
 Alpha Sigma Tau
 Delta Phi Epsilon

Interfraternity Council

Alpha Kappa Lambda
 Delta Lambda Phi
 Phi Kappa Psi
 Phi Mu Alpha Sinfonia
 Sigma Phi Epsilon
 Sigma Pi

National Pan-Hellenic Council

Sororities
 Alpha Kappa Alpha
 Delta Sigma Theta
 Sigma Gamma Rho
 Zeta Phi Beta

Fraternities

Alpha Phi Alpha
 Iota Phi Theta
 Kappa Alpha Psi
 Omega Psi Phi
 Phi Beta Sigma

NALFO

Gamma Phi Omega Sorority

SIUE GREEKS - Fall 2008

Voter registration expected to be largest in SIUE's history

by **Sydney Elliot**
 Alestle A&E Editor

Erica Snyder is not one of the more than 700 students registered to vote on campus. Yet.

Snyder, a freshman nursing major from Riverton, said she will register to vote once she turns 18 later this month.

"I just think that younger people should have a say in who is (going to be) president of our country," Snyder said.

According to Matt Matheny, graduate assistant in the

Kimmel Leadership Center, as of Monday, the number of registered voters on campus is 714, a large increase from 76 in spring 2007 and 102 in spring 2006.

Matheny said the number of registered student voters during the 2004 presidential election reached 859 on campus. Matheny said the number this year is expected to exceed that by the Oct. 7 voter registration deadline.

Matheny said this increase in student voters is due in part to 2008 being a presidential election year, but he is still glad to see so many registering to vote.

"It kind of feels like we are beginning to saturate the campus," Matheny said. "There is more interest this year,

people are making the effort more so than (in) past years."

According to Madison County Clerk Mark Von Nida, in contrast to the SIUE campus, the number of registered voters in Madison County has decreased since the 2004 presidential election.

As of Friday, 175,000 people are registered in Madison County. Although less than the 2004 voter registration numbers, the current figures are greater than the past three or four years. Von Nida attributed this to a new and better statewide voter registration system. Von Nida said the new system better identifies people who

VOTER REGISTRATION/pg.4

Police Reports

8-29

Police issued Christopher B. Stroh a citation for speeding on South University Drive.

Mildred M. Lanham was arrested in connection with battery and interfering with a 911 call at the vice chancellor's office in Rendleman. Lanham was processed, escorted to her vehicle and escorted off campus. The victim did not file battery charges.

Police took a report about a harassing text message. An officer spoke with both parties and both agreed the text message to be a misunderstanding. No charges were filed.

Police issued Jasper C. Gillespie a citation for the operation of an uninsured motor vehicle on South University Drive.

8-30

Police issued Shane T. Whorl a citation for the operation of an uninsured motor vehicle at the Prairie Hall Lot.

Police issued Christopher W. Varady a citation for the operation of an uninsured motor vehicle.

Police issued Andreas J. Dean a citation for illegal transportation of alcohol by a driver on North

University Drive.

8-31

Police issued Tyler M. Braswell a citation for speeding on New Poag Road.

Police took a report from a resident of Cougar Village Apartment 525 saying his PlayStation game console, video games and controllers were taken from his apartment.

Police issued Joshua S. Wilson a citation for the operation of an uninsured motor vehicle on North University Drive.

9-1

Austin L. Clayton was arrested in connection with unlawful consumption of alcohol by a minor at Cougar Village Apartment 529. Clayton was processed, given a notice to appear and released.

Thomas L. Brock was arrested in connection with aggravated domestic battery at Cougar Village Apartment 406. Brock was located in East St. Louis after leaving the area. Brock was processed and transported to Madison County Jail.

9-2

Police issued James C. Coughlin a citation for speeding on North Circle Drive.

Police issued Abbie Streuter a citation for speeding on South University Drive.

Robert A. McLain was arrested in connection with driving a vehicle with a suspended registration and for the operation of an uninsured motor vehicle. McLain was processed, given a notice to appear and released. The vehicle was towed.

Police took a report from a student whose shoes were stolen while bowling in the Morris University Center. Police questioned suspects, but found no leads.

9-3

Police took a report about a stolen yellow hangtag.

Adam J. Brown was arrested for an outstanding warrant at the SIUE Police Department after coming in for a tow release for his car for driving with a suspended license. Brown was processed, posted bond and was released.

Police issued Shea A. Tuetken a citation for speeding on South University Drive.

Police issued Stephanie M. Wheeler a citation for speeding on North University Drive.

GREEK WEEK from pg. 1

which sorority they are with, so they can be seen as unbiased.

Turner said all the current Collegiate Panhellenic Council sorority members wear the same shirts, so their sororities cannot be identified.

"It helps you decide what sorority you want to join based on the people," Turner said.

Senior education major Angela Nauman is also involved with Gamma Chi, and said she joined the Greek life on campus to meet new people.

"It was a good way to get to know people and develop bonds with them," Nauman said.

While some sororities on campus have a recruitment process, some fraternities do the more common rush method. Current members of these fraternities go out and meet prospective members and invite them to join.

"It's a lot more informal and unstructured," Coordinator of Greek Life John Davenport said. "Most guys only rush one fraternity."

Junior pharmacy major Zack Samples of Jacksonville said he was drawn to Alpha Kappa Lambda after meeting some of its members.

"I had a few friends who were in this frat and then met and hung out with the rest of them," Samples said. "I knew I really wanted to be a part of this."

Montgomery said he joined Alpha Kappa Lambda because he really felt like he could be himself around the other guys.

"I didn't feel like I had to impress anybody," Montgomery said.

Davenport said he was in a fraternity in college, and it became a lifetime association.

"I think it's a way to meet people and really get involved on campus," Davenport said. "Greek organizations do a lot of things on campus. You get to do things you may not have done alone."

One event Greek organizations do on campus is Up 'Til Dawn, an event which helps raise money for St. Jude research and treatment. Davenport said they raised over \$42,000 in the last two years.

"It's the biggest student-run philanthropy on campus," Davenport said. "There are also opportunities for non-Greek students to be involved."

Davenport said he wants people to look past the typecasts given to sororities and fraternities.

"Don't believe the stereotypes you see on TV," Davenport said. "It's not all about the partying. Greeks are really involved and do a lot on campus."

Lindsay Dunham can be reached at ldunham@alestlelive.com or 650-3527.

QUAD PARTY

Inflatables
live music
door prizes

sep 12 2008
7-11 pm
in the quad (obviously)

Free food and drinks

sponsored by the Greek Network Campus Ministry

IT'S BACK TO TESTS & PAPERS, so take a 20 minute vacation at

AZTECIAN
Phone: 618-692-4531
#4 Club Centre
Edwardsville, IL

UV Free Spray Tan
Only
\$15.00

We Match
Competitors
Coupons!!

Tan til 2009
for ONLY
\$79.95!!

& Salon
Expires 9/30/08

We've always been green.
It's time to get on board.

Ride MCT.



MCT Madison County Transit

www.mct.org • (618) 931-7433 • info@mct.org



Sean Roberts/Alestle

International student Praveen Dodda works in the International Student Services Office Monday afternoon. Dodda said his cousin recommended SIUE to him, and he also chose the university for its campus environment.

More than 300 international students from around the world bring diversity, culture

by Allan Lewis
Alestle Reporter

Graduate computer engineering student Mohammad Naghnaeian left his home in Iran in early January to pursue a better education and better employment options. Like Naghnaeian, more than 300 other international students, ended up at SIUE.

"When I first got here I lived with three American students and learned the culture and that helped me improve my language," Naghnaeian said. "I found that every country and every culture thinks different ways."

Currently, graduate engineering students comprise the majority of the international student population at SIUE, and while 48 countries were represented in the spring 2008.

"We have a lot of countries here with people from all over the world," Praveen Dodda, a graduate assistant in the international students office and computer science major from India said. "Most come from Asian countries such as India and Nepal."

SIUE welcomed 110 new international students to the university this semester: 69 graduate students and 41 undergraduates.

"We don't have too many undergraduate students and are trying to change that trend," International Student Adviser Debbie Bayne said. "Engineering is what attracts students to this university."

Bayne said the university hopes to increase the number of

international undergraduate students by increasing financial aid incentives.

"(International students) pay two and a half times the tuition Americans pay, so it is a challenge to say the least," Bayne said.

Dodda said he was drawn to SIUE for many reasons.

"My cousin advised me to this university," Dodda said. "She went to graduate school in the

"(International students) pay two and a half times the tuition Americans pay, so it is a challenge to say the least."

-Debbie Bayne

International Student Adviser

U.S. and told me the instruction and quality of education are good, so I preferred this university."

The campus environment also played a part in Dodda's decision.

"I have traveled to three other schools in the U.S and none of them look like SIUE," Dodda said. "It has a vast campus, and it looks so beautiful. I love this school."

Rolling hills and prairie aside, Naghnaeian said financially

SIUE has its advantages.

"It is beautiful and cheap here," Naghnaeian said.

Dodda, who plans on getting a job in the U.S out of college, said he was impressed with the people he has met during his time at SIUE.

"I have not explored the American culture that much, but I have noticed that the people are really nice here," Dodda said. "I have made some good friends, and I am quite satisfied with the way we are received."

International students can participate in a hospitality program, in which a host family within the community acts as the student's home away from campus.

"(Hospitality families) are a big part of some students' time here and help out a lot," Bayne said.

Each international student goes through a one-week orientation program, similar to that of freshmen students, in which they become acquainted with the university and different services offered throughout. The seminars also give students a chance to work with immigration agencies.

Aside from traditional services, International Student Services provides students with rides to and from the airport and assures students housing.

"It is quite different to go to school in the United States," Dodda said. "I am privileged to study outside my country and am getting everything out of it."

Allan Lewis can be reached at alewis@alestlelive.com or 650-3527.

LOOKING FOR HEALTH INSURANCE?

Look no further. I offer a variety of flexible and affordable health insurance options to meet your needs. Call me today for more information.



Jody White, Agent
450 Regency Ctr
Collinsville, IL 62234
Bus: 618-343-1400
www.jodywhiteagency.com

LIKE A GOOD NEIGHBOR



STATE FARM IS THERE.®

State Farm Mutual Automobile Insurance Company • Bloomington, IL • statefarm.com
PD64006 07/06

bp



Edwardsville BP

301 S. Buchanan
Edwardsville, IL 62025
618-659-9754

Locally Owned and Operated

FREE ATM!!!

*Try Our Mix & Match 6 Pack...
over 100 Beers to choose from!!*

*We have New Belgium's Fat Tire,
Shiner Bock, Kronenbourg 1664
and many others*

Fountain Drinks
A Penny Per Ounce
44 Ounces = 44 Cents

w/student ID
expires 10-5-08

HOT DOGS
Only \$1.29
Buy 1 Get 1 Free

w/student ID
expires 10-5-08

FREE DONUT
with purchase
of coffee

w/student ID
expires 10-5-08

Hollywood ★ Tan

5 months for \$95
One Week for \$9.99

656-8266

Located next to Denny's in front of Wal-Mart • www.hollywoodtand.com

Affordable Auto Insurance



- SR-22
- Monthly installments
- Local Agent

Motorcycle and renter's insurance available, too.

Call One Of Our Agents Today!
Cassens Insurance Agency

400 St. Louis Street • Edwardsville

656-6074

VOTER REGISTRATION
from pg. 1

may be registered multiple times and people who have died.

Von Nida said the number of voters registered in Madison County is expected to increase again before Oct. 7.

"What I expect is that by the deadline (the number) will move back up," Von Nida said. "Typically what happens is that you have a surge (in registration) before the deadline for a presidential election."

In St. Clair County, located directly south of Madison County, 152,071 people were registered to vote before the primaries, according to St. Clair County Clerk Bob Delaney. As of Monday, the number increased by over 3,000 voters to 155,456 registered voters, Delaney said.

Political science professor Ken Moffett has also noticed a dramatic increase in registered voters during the last few years. Moffett said this increase is linked to an increasing interest in politics.

"There has been an increase in number of organizations like Rock the Vote, that have been focused on getting more people registered," Moffett said. "Political scientists have found that as more people become registered they are more likely to vote."

According to Moffett, research has shown that 80 percent of people who are registered turn out to vote.

The increasing interest in politics is also due to the "polarized political environment" we live in, according to Moffett.

"What's happened over time is ... conservatives of the Democratic Party have since become Republicans (and vice versa) ... so what you get, really in the last five or six years, is the crystallization of that trend," Moffett said.

Delaney said St. Clair County has seen an increase in college age students registering to vote, whereas Moffett said the trend seems to be increasing "across the board."

"I see more interest in young people and people who haven't been involved recently, and I think that's because of the (Democratic candidate Sen. Barack) Obama campaign," Delaney said.

Delaney said this election is so important and causing more people to get involved because of the state of the economy.

Students can register to vote in Madison County in the Morris University Center's Kimmel Leadership Center or the Edwardsville city administration building. A picture ID and a piece of mail to prove residency are required.

To register to vote in St. Clair County, a picture ID is needed and students can register at any Department of Motor Vehicles, courthouse, city hall or library.

The deadline to register is Oct. 7 at the end of the business day. Early voting will take place for anyone registered in Madison County from noon to 6 p.m. Oct. 15 to Oct. 30 in the Morris University Center on weekdays and 10 a.m. to 3 p.m. on Saturdays.

Matheny said registration is important, but going to the polls is what matters.

"(To get to the polls) count on friends, remind them, drag them to the polls (on) election day, whatever it takes to get them there," Matheny said.

Sydney Elliot can be reached at selliot@alestlelive.com or 650-3527.



COSMIC BOWLING

Every Wednesday

8-10 pm \$15.00 per Lane

Each Lane Receives:

2 hours of Bowling

Free Rental Shoes

A Medium Pizza from Pizza Hut (No Special Orders)

Come Join Us for a "FAR OUT" experience...

for info call : 618-650-5263

Goshen Showcase

Come see

Jesse Ives
perform

Mon. Sept. 15th

from 11 a.m. - 1 p.m.
in the Goshen Lounge.



SIUE
CAMPUS RECREATION

618-650-BFIT
WWW.SIUE.EDU/CREC

SOUTHERN ILLINOIS UNIVERSITY
EDWARDSVILLE

INDOOR POOL

MONDAY-FRIDAY
6:15 AM - 8:15 AM
11:30 AM - 1:30 PM
4:30 PM - 9:30 PM

SATURDAY + SUNDAY
12:00 PM - 3:00 PM
6:00 PM - 8:30 PM



Sundanners

You have tried the rest,
now tan with the **BEST!**

1 week unlimited \$10
1 Month Unlimited \$25

Expires 9/30/08

Hot New Bulbs!

Open 7 Days A Week!

First Tan is Always Free!

Call **656-UTAN (8826)**
6455 Center Grove Rd. Suite 101 • Edwardsville, IL 62025

Innertube Basketball
Registration Due:

Sept. 10

Event Start:

Sept 17

For more info Contact: Nate Scott@ 650-3245



Sand Volleyball Tournament
Registration Due.

Alestle
Alton - East St. Louis - Edwardsville

Editorial Board:

Catherine Klene
Editor in Chief

Holly Meyer
Managing Editor

Erika Helmerichs
Opinion Editor

Sydney Elliot
A&E Editor

Josh McCarty
Kenneth Long
Sports Editors

June Farley
Photo Editor

Katie Patterson
Chief Copy Editor

Jeff Mason
Karina Swank
Amanda Neudecker
Copy Editors

Ashlee Glover
Brandy Bearden
Advertising Managers

Molly Maurer
Rachel Hutchens
Graphics/Production

Tammy Merrett-Murry
Adviser

Mike Genovese
Graphics Supervisor

Rami Moussawi
Graduate Assistant

Debbie Roberts
Office Manager

Jessica Wallace
Dana Johnson
Gena Triefenbach
Britany Thomas
Office Secretaries

Letters to the Editor Policy:

The editors, staff and publishers of the Alestle believe in the free exchange of ideas, concerns and opinions and will publish as many letters as possible.

Letters may be turned in at the Alestle office located in the Morris University Center, Room 2022 or via e-mail at opinion@alestlelive.com.

All hard copy letters should be typed and double-spaced. Letters should be no longer than 500 words.

Please include phone number, signature, class rank and major.

We reserve the right to edit letters for grammar and content. However, care will be taken to ensure that the letter's message is not lost or altered.

Letters to the editor will not be printed anonymously except under extreme circumstances.

We reserve the right to reject letters.

About the Alestle:

One copy of the Alestle is no charge. Additional copies cost 25 cents.

The Alestle is a member of the Illinois College Press Association, the Associated Collegiate Press and U-WIRE.

The name Alestle is an acronym derived from the names of the three campus locations of Southern Illinois University Edwardsville: Alton, East St. Louis and Edwardsville.

The Alestle is published on Tuesdays and Thursdays during fall and spring semesters and on Wednesdays during summer semesters. For more information, call 650-3528.

Have a comment? Let us know!

Send us an e-mail: opinion@alestlelive.com
The Alestle
Campus Box 1167
Edwardsville, Ill. 62026-1167



Have an issue? Want to have your voice heard? Become a contributor for the Alestle.
opinion@alestlelive.com

Setting the stage for the next president

All the world may be a stage, but the political platform of the presidential election might as well be a stage of Broadway proportions.

In previous columns, I have said America has a celebrity obsession. While I see it as an addiction that might just deserve a collaborative trip to a nationwide rehab center, our need to follow the lives of the rich and famous has overtaken the American political system.

Even our candidates for president seem like actors in an elaborate Hollywood script. Take the backgrounds of Republican candidate Sen. John McCain and Democratic candidate Sen. Barack Obama.

McCain's military history includes being shot down during the Vietnam War, tortured for years and coming home a hero.

During his stint at the Hanoi Hilton, his captors refused to give him medical treatment until they realized his father was a high-ranking admiral in the military. It would be

enough to turn anyone's hair white.

He came home in 1973, after over five years of torture, as an icon of the American spirit. He eventually went on to become a senator.

Will the plot lead this war hero to the White House? That storyline might rival that of "Saving Private Ryan."

Barack Obama's life story hails from a different genre, but still has airs of a possible Academy Award.

Obama, an interracial man whose parents split up when he was two, has wowed the world of politics with a rhetoric that doesn't quite match his age. He didn't come from a wealthy or prestigious background, and only recently finished paying off his school loans. His rise to power in the political world is reminiscent of that of a Kennedy.

After a short stint in the Senate, he is now the first black candidate officially endorsed by Democratic or Republican parties.

Even during his race for the Democratic bid, he went up against another political movie-in-the-making, Sen. Hillary Clinton, the wife of a former president and potentially

the first female president at the time.

While Obama has been called a "celebrity" during his campaign, are any of the candidates really anything less?

McCain's vice presidential pick of Alaska Gov. Sarah Palin certainly made as many, if not more, headlines as a Britney Spears breakdown or a Super Bowl "wardrobe malfunction."

To me, this election could be viewed as two candidates running to become elected president of the United States, or it could be viewed as two screenplays vying for a spot on the big screen, each with compelling plots and inspirational stories.

Until the producers come back from lunch and decide on a script, Obama and McCain are on the Broadway of political platforms until the cast list is posted, with a Vaudeville performance full of speech-making, mud-slinging and maybe a musical number thrown in.

Kenneth Long is a sophomore mass communications major from Staunton. He can be reached at klong@alestlelive.com or 650-3527.

SIUE is still "green" in the popular green movement

Textbook Services no longer provides plastic bags for its customers. In fact, each customer this year received a coupon for a "FREE Morris University Center Recycled tote bag." Shirts displayed in the front window of Union Station offer customers wearable eco-slogans like "THINK GREEN," "100% Organic," and "I RECYCLE."

Center Court now offers biodegradable to-go boxes instead of polystyrene clamshells. Last year, the green roof on top of the Engineering Building was a center of conversation and attention, thanks to an article by the Alestle. The very campus landscape itself serves as an icon of how beautiful nature can be, even in a heavily trafficked and industrialized world, when properly cared for. Signs of SIUE's new commitment to "go green" are visible all over the place, and those efforts are duly noted and appreciated.

However, I can't help but question where SIUE's heart is in all of this. Let's not forget that the recycling craze among corporations was not started as much by a desire to do good for the environment as by a desire to

capitalize through an appeal to the masses. Is SIUE just jumping on the "green" bandwagon?

It's certainly convenient, considering the campus can already boast a beautiful, greenery-laden landscape. What has SIUE got to lose by picking up the "green" standard and waving it proudly in the air? Such an act will certainly appeal to potential students growing up in a generation bombarded by eco-friendly encouragement.

Whether or not SIUE is in it for the money, however, is not my concern. What I am interested in is that, whatever the ulterior motives may be, SIUE continues to make environmentally friendly changes like they have been. There've been rumors circulating campus recently that the school's recycling bins are ultimately thrown in with the rest of the trash, despite being picked up separately.

However, whatever happens to those recyclables happens behind closed doors, so let's look at something a bit more visible: parking services. The kind-hearted parking service workers drive around all day, lustfully scanning the parking lots for any potential opportunity to hand out a ticket.

It sure doesn't seem very "green" for the school to be assigning gas-guzzling pickup

trucks as tools for a job that could easily be done on foot (maybe even joyfully — what could be better than getting paid to walk around this gorgeous campus?) Tired feet? Can't walk for an eight-hour shift? Ask a nurse how he or she feels about the amount of walking on that job. The weather conditions are too extreme in Illinois for that? Ask a postal service employee about that job.

If Parking Services still insists on driving as a necessary part of the job, they could at least switch over to driving carts instead of big trucks. That would burn less gas, help the economy, and still provide protection from the elements.

I'm not out to declaim SIUE for "going green," and I'm not calling them hypocrites. I'm just saying that if SIUE's going to commit to something, I'd like to see them commit to it to the fullest extent instead of a half-hearted, hand-shaking politician's feign of concern. There are plenty of issues that SIUE — and all of us — can and should take a crack at in order to make the air a little cleaner and the grass a little greener.

Andrew Doty
Senior English major
Peoria



Kenneth Long

Letter to the Editor

Queens of the runway

Second annual drag show entertains crowd, helps less fortunate Friday

by Jeff Mason
Alestle Reporter

Killer dress? Check. Six-inch heels? Check. Makeup? Check. A wig and tape in places it shouldn't be? Check. Dead sexy? Check.

The fiercest divas in the area came out in full force for Delta Lambda Phi's "Goddesses Gone Wild" drag show. Gals like Tabbi Katt and Coco Jackson jumped on stage to sing a song and collect tips all night to the sounds of everything from N*Sync to Rihanna.

Coco Jackson, also known as SIUE alumnus and former Delta Lambda Phi President Ben Jacobs, decided to come out in a black dress and a pair of high-heeled shoes that made stilt-walking look easy.

"It's been amazing, but a lot of pain, a lot of money spent into it, but if I could repeat it, I'd do it again," Jacobs said. "(I've earned) a good portion of (the money back), but not nearly what I spent ... You only live once."

Jacobs said he had wanted to do the show for a while and jumped at the chance.

Christina Walker of Edwardsville said she had a great time and would come back for next year's show.

"It was really fun, they were beautiful," Walker said. "Rydyn's hot, and the red head and the hostess. They're all great ... (I am) definitely going to come next year."

The audience wasn't the only group of people having fun. Even the performers said they enjoyed the show.

"It was awesome. It was very entertaining to myself," performer Shelbie Reightback said. "I was trying to be very

entertaining to y'all ... (I'd) most definitely come back (to perform next year)."

Nick Smith, president of Delta Lambda Phi, said he was surprised with the amount of people that came out to see the show.

"We've been planning this (show) since the last one last year," Smith said. "Every one of our members and alumni came out here to help us out, and (I'm) just glad it went off with a blast."

QUEENS/pg. 7



Hunter Creel/Alestle

Drag queen Tabbi Katt straddles SIUE student Chris Blanchard during the drag show.



Derrick Hawkins/Alestle

Drag queen Madison Elise was one of several drag queens to perform in the show "Goddesses Gone Wild" on Friday night. The drag show, hosted by Delta Lambda Phi fraternity, collected cans of food for charity and money to go back to the fraternity.

9	10	11	12	13	14	15
<p>Today 6th Annual Sigma Pi Pig Roast and Luau 10 a.m. to 4 p.m. Stratton Quadrangle</p> <p>Motor Head 7 p.m. The Pageant \$25</p>	<p>Wednesday Résumé Doctor 11 a.m. to 2 p.m. MUC lower level</p> <p>Vampire Weekend 8 p.m. The Pageant \$20</p>	<p>Thursday Food Chat Election 2008 11:30 a.m. to 12:30 p.m. MUC University Restaurant</p> <p>Late Night Espresso 8 p.m. to 11:30 p.m. Starbucks Free</p>	<p>Friday Friday Free Flick: Sex and the City 6 p.m. to 8 p.m. Abbot Auditorium Lovejoy Library Free</p>	<p>Saturday Mike Birbiglia 8 p.m. The Pageant \$23.50 to \$25</p>	<p>Sunday Sand Volleyball Tournament Noon Cougar Village Sand Volleyball Court</p>	<p>Monday Goshen Showcase 11 a.m. to 1 p.m. MUC Goshen Lounge</p>

Art and design professors showcase their talents

by **Lindsay Dunham**
Alestle Reporter

SIUE art professors have been given a chance to show their talents this month with the annual Faculty Art Show.

The art show runs from Sept. 2 through Sept. 18 and is on display in the New Wagner Gallery in the Art and Design Building.

The show features work the art professors have created in the last year, from sculptures to painting and photography.

Painting professor John DenHouter entered five paintings in the show: three small landscapes and two larger paintings. He said the landscape paintings took only about an hour to create.

"Those are really about going out and capturing on canvas the sort of light I'm seeing, whether it be morning, night or midday," DenHouter said.

This is DenHouter's 12th year in the faculty art show and he feels it is a good chance for students to see the creations of their teachers.

"Faculty are sort of expected to show what they've done throughout the year," DenHouter said. "It's an opportunity for students to see what their professors have been working on."

Dianne Lynch, art department information office supervisor, also feels the show is beneficial to the students.

"It will help the students identify the direction of the faculty person," Lynch said. "If they are in class with the faculty person now, it will be helpful to them to see the ultimate outcome of what they're teaching. It can also give them ideas."

Art and Design Department Chair Thad Duhigg said this type of show is normal for most colleges.

"This is a pretty common event in all universities," Duhigg said. "You expect your professor to practice what they teach. That way you can see that they are out there in the field and know the current trends."

Duhigg has a large sculpture in the show featuring three life-sized Uncle Sam figures holding flags out toward a flagpole. Each figure, flag and flagpole is a different color: one red, one white and one black.

"This is a political statement," Duhigg said. "For me, it's the way everyday Americans view patriotism."

The show offers a wide assortment of artwork, made with many different materials.

"It's a nice show and shows a wide range of work," DenHouter said. "It shows variety in the types of media people can work with."

"This is a political statement ... it's the way everyday Americans view patriotism."

- Thad Duhigg, sculpture professor



June Farely/Alestle

"Three Flags," created by sculpture professor Thad Duhigg, is one of the pieces being displayed at the Faculty Art Show in the Art and Design Building until Sept. 18

QUEENS

from pg. 6

Junior political science major and member of Delta Lambda Phi Charlie Weder of Highland said the fraternity wanted to improve on last year's show by making things a bit more accessible to the crowd.

"This is the second time we've done (the show)," Weder said. "Last year it was in Dunham Hall, but that wasn't as large a

venue as we wanted. The stage wasn't as good (and) couldn't be as interactive as it is now, so we decided on the Meridian (Ballroom)."

The show was held Friday to help raise money for the fraternity and collect canned goods for a local food pantry.

Jeff Mason can be reached at jmason@alestlelive.com or 650-3531.



Hunter Creel/Alestle

Drag queen Shelbi Reightback entertains the crowd Friday night.

COUGAR CRAZE

Sept. 10th 11:00-1:00PM MUC Goshen Lounge

Free inflatable Jousting! Receive a free gladiator headband!



FRIDAY FREE FLICKS SEPT 12TH ABOTT AUDITORIUM (LIBRARY BASEMENT) 6:00PM

FREE SHOWING OF SEX AND CITY WITH POPCORN AND SODA!



Food Chat

Sept. 11th 11:30-12:30PM MUC Illinois Room



Receive free lunch while discussing International affairs with political science professor Dr. DeGarmo!

Sponsored by CAB



SIUE falls twice at Bradley tournament

by Allan Lewis
Alestle Reporter

The Cougars managed to post one victory while falling twice during a weekend in Peoria that senior setter Mallory Clements described as exciting and frustrating.

The SIUE volleyball team split their Friday night, five set, twin-bill defeating Eastern Michigan University in the tournament opener 25-20, 25-23, 19-25, 19-25, 18-16, while losing to host Bradley University 25-23, 22-25, 25-11, 25-22, 15-13 for the Braves first victory of the season.

"We played well, and we played better," volleyball Head Coach Todd Gober said. "When we didn't play well, we came back, and by the end, we played a strong match every game, and I was happy to see our team raise our consistency throughout."

In the Eastern Michigan match, the Cougars jumped out to an early 4-0 lead in game one while taking advantage of 15 Eagles' attack errors. SIUE led throughout the first two sets with the exception of a 3-0 Eastern Michigan run to begin the second set.

The Eagles would not back down though, as they began the third game with a 9-3 run, and would not let the Cougars come back, scoring five consecutive points after a timeout when SIUE got the game within two at 16-14.

Eastern Michigan would even the contest at two games with Jennifer Schwartz, who recorded four kills in the frame. The first tie-breaker of the weekend went to the Cougars.

With a 14-12 lead and the match point at their hands, the Eagles clawed their way back into the match, recording kills on consecutive plays to tie the match. The Cougars would need 18 points to

finally put the game away on a blocks by Clements and senior middle hitter Kelsey Hubert.

Serving and defense played a big factor in the win, as the Cougars scored 111 digs to the Eagles' 88, and as a team combined for 10 service aces.

"Our defense coming through was a big factor this weekend," Gober said. "We served pretty well and took teams out of their offense and that made some of what they were doing predictable."

Hours after recording their second victory of the season, the Cougars returned to the court to take on Bradley, a match in which they would come two points short.

The Braves would take the first set 25-23, out-killing SIUE 15-11. The Cougars would tie the match with a close win in the second set before experiencing a 25-11 fall in the third set.

Seven kills from Sydney Winslow would get the Cougars back into the game in the fourth set before Bradley put the Cougars away with a 15-13 win in the tiebreaker.

The Cougars' defense would come out strong again, with Emily Rahn leading all players with 13 digs and Diane Schmidlin recording 10 in the losing effort.

"These are the most frustrating losses you can ever have," Clements said. "It's better to lose in five instead of three, but we know we can beat these teams."

Despite his team playing twice in one evening, Gober said he did not see his players drop off throughout the duration of the matches.

"Our team is in good physical shape and trained very hard in preseason," Gober said. "I'm not looking at that as any reason for coming up short."

The Cougars went the distance again on Saturday, as the University of



Ashley Hinkle/Alestle

An SIUE volleyball player prepares to serve during practice this season. The Cougars went 1-2 during the Bradley tournament

Wisconsin-Milwaukee dropped them to 2-3 so far this season, taking the match in five sets: 20-25, 28-26, 22-25, 25-23, 15-5.

SIUE would take the first game, but would lose the second, as the Panthers went on two five point runs and another for six. The Cougars could not push the final points across as Milwaukee evened the match with a hard-fought 28-26 win. After splitting the third and fourth sets, the teams went to a tie-breaking fifth set, in which Milwaukee prevailed 15-5.

"We were struggling with pushing across those last points," Winslow said. "There was really nothing we could be mad at ourselves about."

Gober said his team is coming out of the weekend confident, but needs to work on a few things in order to win games at the Division I level.

"I'm very pleased with how (the season) is going so far," Gober said. "We are not going to be satisfied with just playing teams close, and we are proving we can play. Confidence is at a high level."

The Cougars next match is set for 7 p.m. Wednesday in Evansville, Ind., when they will take on the Evansville Purple Aces.

Allan Lewis can be reached at
alewis@alestlelive.com or 650-3524.

SIUE cross country teams open seasons at Washington University Big River Early Bird race

by Josh McCarty
Alestle Sports Editor

The SIUE cross country season is officially underway as the Cougars competed in the Big River Early Bird in Forest Park, Mo.

Both the men and women's team finished sixth place overall in their respective races in a field including several Division I schools.

For the women's team, junior Kayla Brown led the way with a finishing time of 14 minutes and 37.6 seconds in the 4,000-meter race. The effort earned her sixth place overall, 17 seconds behind first place finishing Washington University alumna Beth Herndon.

"It was a pretty good time," Brown said. "I ran 30-some seconds faster than I did two years ago."

Coming in second for the women's team was freshman Aftan Noon. Noon finished the race with a time of 16:02.1, 30th overall in the field. Brown said she was pleased to see the first-year runner contribute with a strong effort.

"(Before the race) I didn't know exactly what she could do," Brown said. "It was really nice to see her pretty far up there."

Senior Kelly Flounders placed third among Cougar runners, coming in 32nd place with a time of 16:07.1. Although she finished in the top fourth of the field, Flounders said she was disappointed with her finishing time.

"Personally, this time was worse than I had expected to run," Flounders said. "Some days you have a bad race, and I feel that was what happened to me."

While Flounders will look to improve her individual times throughout the season, the opening race of the year left her feeling optimistic about the season's outlook.

"I think that this first race really showed our potential," Flounders said. "However, we still have a few people recovering from injuries, so we will have to wait and see how they do when they come back. Overall, I feel we have a really good team this year."

Rounding out the scoring for the Cougars were junior Stacey Briggs finishing 41st overall with a time of 16:34.8, sophomore Stephanie Briggs finishing 52nd overall at 17:16.2, sophomore Maggie Krall finishing 56th overall with a time of 17:33.3 and Heather Hackel coming in at 17:35.9, finishing 59th.

On the men's team, five Cougars finished in the top

38 in the field, including senior Kyle Cameron who posted a time of 18:58.2, good for fourth place overall. For Cameron, the overall result did not come as a surprise.

"I think it went well," Cameron said. "I expected us to finish around the middle of the pack, and that's what we did."

Like the women's team, it was a freshman posting the second fastest time for the men with Marc Amarillas coming in at 20:16.9, good for 30th place overall.

Junior Sean Gosewisch ran a time of 20:19.4, coming in 31st place, and sophomore Shawn Dilliard finished the race in 20:35.5, crossing the finish line in 38th place.

Rounding out the scoring for SIUE was junior Ryan Wessling who finished 65th overall with a time of 21:53.2.

The Cougars now turn their attention to the Eastern Illinois University Panther open Friday.

The women's race is a 5k, and start time is set for 5:30 p.m., while the men's 8k run will start at 5:15 p.m.

Josh McCarty can be reached at jmccarty@alestlelive.com or 650-3524.

Cougars fall in double overtime

by Levi Kirby

Alestle Correspondent

SIUE men's soccer team fell to 1-2 after a double overtime loss to the rival Northern Illinois University Huskies Friday.

The Cougars struck first with an unassisted goal from sophomore Ryan Wilhelm at 17:09 from 35 yards out. Senior Nick Bigogno made it 2-0 just over seven minutes later with another unassisted goal. The Cougars held the 2-0 lead into halftime.

Head Coach Kevin Kalish said the first half of the game was the best 45 minutes the team has played all season.

"We were in complete control of the match," Kalish said. "We were playing our style with confidence."

Bigogno's goal in the first half was no easy feat for the senior midfielder. He said he was playing with the stomach flu and hadn't eaten anything for several days. He said after the first half he basically ran out of energy.

Even with the flu, Bigogno managed to play all 110 minutes of the game, and Kalish said he believes he deserves recognition.

"He was a warrior," Kalish said. "Those are the

performances that SIUE soccer is all about."

The undefeated Huskies came back strong after halftime and cut the lead in half when Tim King shot a goal past senior goalkeeper Nick Frasca.

Less than two minutes later, an SIUE foul forced Frasca to defend a penalty kick by NIU midfielder Brad Horton.

Frasca said he prepares mentally before a penalty kick by doing a little waiting. He determines whether he is up against a power kicker or a finesse kicker. Doing this helps keep the mental edge on his side.

"I stall a little bit to make sure all the pressure is on the shooter," Frasca said. "He is supposed to make the shot. I'm not supposed to block it. The more I stall and wait, the more pressure goes on him."

Still, Horton handled the pressure and landed the penalty shot to tie the game at 2-2. The game remained tied and both teams deadlocked throughout the rest of regulation.

The first overtime came and went without a goal being scored, but at the 109th minute mark, in the second overtime, NIU's Danny Lopez converted the game-clinching score.

"The second half we got away from what made us successful (in the first half)," Kalish said. "We had some forced mistakes, momentum started to shift, and we started chasing the game a bit. Then they snuck one in the last minutes of overtime."

Despite the rough loss, Kalish said there is improvement every week and if that continues they will be successful.

The Cougars' next game is 7 p.m. Friday in Dayton, Ohio against Wright State, followed by a 3 p.m. Sunday contest in Fort Wayne, Ind. against Indiana University-Purdue University Fort Wayne.

Frasca said the upcoming two-game weekend could be a big turning point for the team's confidence. He said it is important to go out and get two wins this weekend.

Bigogno said he is ready for the big weekend and knows the team will be ready.

"We're going to try and do what we are trying to do all year," Bigogno said. "Compete and play hard and prove that we belong (in Division I)."



June Farley/Alestle

SIUE freshman soccer player Nash Maduekwe dribbles the ball during practice this season. SIUE lost to Northern Illinois Friday.

Levi Kirby can be reached at lkirby@alestlelive.com or 650-3524.

ask listen solve

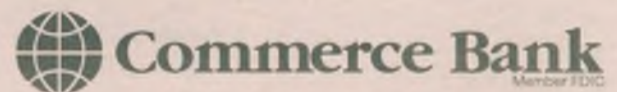
DUDE

SIR

You have a lot to handle in college. There are a ton of things to balance and decisions to be made. Like hangin' out with your friends or meeting your date's parents.

With Commerce Bank's **More Than Free Student Checking**, you'll have one less thing to worry about. You manage your life. We'll help you manage your money — with **free** Online Account Access, **free** Online Bill Pay, and a **free** Check Card. **Plus, get up to \$125 in incentives just for using your account!***

Seek balance with your money. Visit commercebank.com/learn.



618-655-9812

commercebank.com

call click come by

*No Commerce fee at another bank's ATM up to three times per month. Non-Commerce ATM transactions in excess of three per month will incur a Commerce fee; however, for a limited time you can obtain a refund for five of these. Other bank's ATM fee may apply. To receive incentive, your account must be in good standing three full months after opening. Incentive credited the next month. Annual Percentage Yield 0%. Incentive greater than \$10 reported as interest to the IRS. Maximum total incentive \$125. Limited-time offer. ask listen solve and call click come by are trademarks of Commerce Bancshares, Inc. © 2008 COMMERCE BANCSHARES, INC.

Akpore delivers big shot for Cougars



courtesy SIUE sports information

SIUE sophomore Sade Akpore controls a ball during a game last season. Sophomore Kiara Akpore made the game winning goal.

Overtime victory ends three-game losing streak

by Levi Kirby
Alestle Correspondent

SIUE women's soccer evened out the weekend 1-1 after an overtime win Sunday against Ohio Valley Conference foe, the Murray State Racers.

The win broke a three-game losing streak after a 4-1 loss to University of Tennessee at Martin on Friday.

The game remained scoreless throughout regulation and into overtime until Kiara Akpore, a sophomore forward, hit the game-winning goal with 24 seconds left in overtime.

"It felt great," Akpore said. "It was so exciting. We worked really hard, and it felt good to make it."

Women's soccer Head Coach Derek Burton said the team on Friday and the team on Sunday were like night and day. He said mental and physical effort made the difference in a loss in the first game and a win in the second.

The teams tied totalled 14 shots each, but SIUE made the Racer goalkeeper work, sending six shots to the goal and connecting on the final shot of the game.

Senior forward Jennifer Kratzer led the team with four shots, followed by Akpore with three and Kaci Harkey with two.

Senior goalkeeper Kaci

Backs played all of regulation play and overtime and recorded one key save in the first half.

After losing three consecutive games, the Cougars were in need of a positive outcome, and Kratzer said the overtime win will definitely help them in the future.

"We were flying high," Kratzer said. "It is a really good feeling to give it all you've got and win."

The intensity effort, and a change in formation formation helped the Cougars to a big conference win against a tough Murray State team.

Burton said the win on Sunday was the best the Cougars have looked all season, coming against what he called the toughest opponent they have faced thus far.

"It's a great stepping stone for the team," Burton said. "We are realizing what we need to do to compete."

The loss on Friday against UT Martin gave the Cougars a 1-3 record for the regular season. Burton said the team had a lack of awareness that game that led to the three-point loss.

The now 2-3 Cougars head to Southeast Missouri State University Saturday at 7 p.m.

Levi Kirby can be reached at lkirby@alestlelive.com or 650-3524.



TheBANK
of Edwardsville
The People You Know & Trust

WELCOME BACK!

Join the Club! | 

FREE T-SHIRT



Come into the Cougar Banking Center (Morris University Center) and receive a FREE T-shirt when you open a Cougar Club Checking Account!

COUGAR BANKING WITH COUGAR PRIDE

www.cougarbanking.com

SIUE
CAMPUS RECREATION

618-650-BFIT
WWW.SIUE.EDU/CREC

SOUTHERN ILLINOIS UNIVERSITY
EDWARDSVILLE

INDOOR POOL

<p>MONDAY-FRIDAY 6:15 AM - 8:15 AM 11:30 AM - 1:30 PM 4:30 PM - 9:30 PM</p>		<p>SATURDAY + SUNDAY 12:00 PM - 3:00 PM 6:00 PM - 8:30 PM</p>
------------------------------------------------------------------------------------------------	---------------------------------------------------------------------------------------	------------------------------------------------------------------------------

Innertube Basketball

Registration Due:
Sept. 10

Event Start:
Sept 17

For more info Contact: Nate Scott@ 650-3245



Sand Volleyball Tournament

Registration Due:
Sept. 12

Event Start:
Sept 14

For more info Contact: Nate Scott@ 650-3245




Girls & Sports By: Andrew Feinstein

Today's laughs

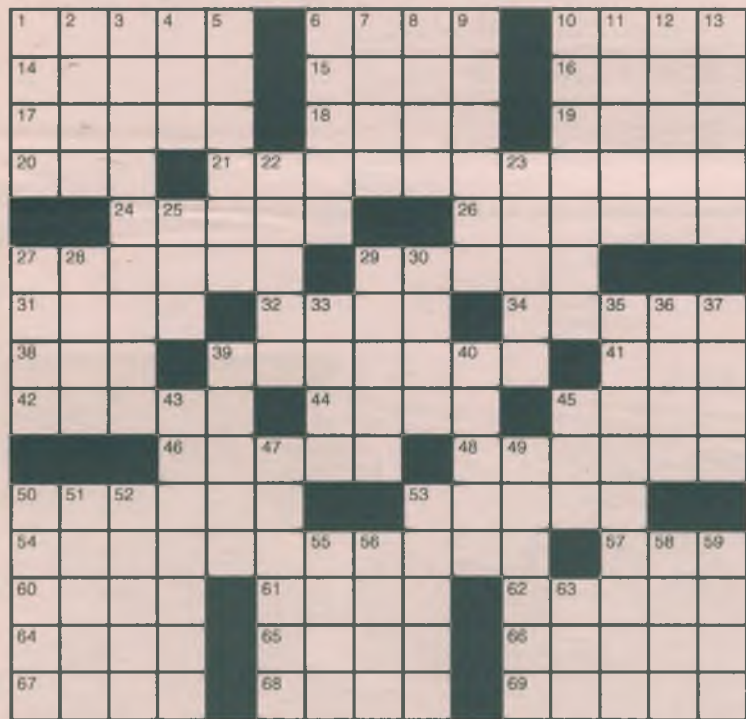


"Dan in accounting said this place is great for firing people."



"We have to stop meeting like this — people are starting to laugh."

THE Daily Crossword Edited by Wayne Robert Williams



- DOWN**
- 1 Counterfeit
 - 2 Actor Roscoe
 - 3 End-of-filming get-together
 - 4 Diarist Anais
 - 5 Certain Arabs
 - 6 Bypass
 - 7 Organic compound
 - 8 "Lady Jane Grey" dramatist
 - 9 African titles
 - 10 Clinton cabinet member Donna
 - 11 Impresario Sol
 - 12 Still in the game
 - 13 Labyrinths
 - 22 Baker or Loos
 - 23 "Dallas" family
 - 25 Question
 - 27 Pub offerings
 - 28 Hanks role
 - 29 Sheep's cry
 - 30 Aleutian island
 - 33 Little devils
 - 35 Submariners' harbor
 - 36 Transit-loss allowance
 - 37 Off-the-wall
 - 39 Ike's V.P.
 - 40 Site of rites
 - 43 Changed the land-use rules
 - 45 Body of water
 - 47 Owing
 - 49 Limerick necessities
 - 50 Balance-sheet item
 - 51 Paris subway
 - 52 Amtrak's bullet train
 - 53 Henhouse area
 - 55 Wild plum
 - 56 Kodak brand
 - 58 Poker declaration
 - 59 Word after 21A, 39A, 54A, 3D and 35D
 - 63 Winter Games grp.

- ACROSS**
- 1 Young deer
 - 6 Belgrade native
 - 10 Counterfeit
 - 14 Skylit courtyards
 - 15 Be aware of
 - 16 Waikiki wiggle?
 - 17 Sandra's "Speed" co-star
 - 18 Hawkeye State
 - 19 Colo. neighbor
 - 20 Psychic letters
 - 21 "(Today I Met) The Boy I'm Gonna Marry" singer
 - 24 House coat?
 - 26 Comes to
 - 27 Andre of tennis
 - 29 Pesto herb
 - 31 Skulk about
 - 32 Pinball foul
 - 34 Jim of CBS sports
 - 38 CPR specialist
 - 39 Conference ID
 - 41 Coach Parseghian
 - 42 "Heidi" novelist
 - 44 Rider Revere
 - 45 Cinema-tographer Nykvist
 - 46 Have life
 - 48 Part of SEATO
 - 50 Online bookseller
 - 53 1986 Indy winner Bobby
 - 54 Upstairs
 - 57 Cartoonist Keane
 - 60 Anna of "Nana"
 - 61 Sailor's saint
 - 62 Florida city
 - 64 Perry's creator
 - 65 Long scarves
 - 66 Red dye
 - 67 Unlikable one
 - 68 Printed matter
 - 69 Play part

Thursday's Answers

SUDOKU By Michael Mephram



Complete the grid so each row, column and 3-by-3 box (in bold borders) contains every digit 1 to 9. For strategies on how to solve Sudoku, visit www.sudoku.org.uk.

(c) 2006 Michael Mephram. Distributed by Tribune Media Services. All rights reserved. Now on Mobile! Key in 783658.com on your cell's Web browser for details. Charges will apply.

THE Daily Crossword Edited by Wayne Robert Williams



SUDOKU By Michael Mephram



Classifieds

ALESTLE CLASSIFIEDS GIVE YOU MORE!

Place your classified ad at a time convenient for you using our easy, secure online interface at alestlelive.com/classifieds

Your ad gets TOTAL exposure - the power of print AND the immediacy of the internet!

Your ad will be published FREE on our high-traffic web site just as it will appear in the printed version of our newspaper!

All using secure, encrypted SSL transmission for your protection.

BASIC PRINT INSERTION RATES:

10 word minimum for all ads.

20 cents a word 1-2 insertions, per insertion

19 cents a word 3-4 insertions, per insertion

18 cents a word 5-19 insertions, per insertion

17 cents a word 20+ insertions, per insertion

Print Extras:

All bold, additional \$5

Web Extras Vary

Please schedule your ad carefully as we cannot offer refunds. Corrections must be noted by on the first day the ad appears in the newspaper.

Deadlines:

By 11 a.m. Monday for Tuesday issue
By 11 a.m. Wednesday for Thursday issue

Having trouble? Call 618-650-3528
or e-mail classifieds@alestlelive.com

Alestle Office Hours (MUC 2022):
8 a.m. - 4:30 p.m. Mon-Fri

FOR RENT

3 BEDROOM TOWNHOMES
1200 sq. feet, internet available, quite, private parking, ceiling fans, ideally suitable for 3 upper classman or Grad. 1 year lease \$780.00 month.
skyviewtownhouses.com. 618-345-9610

THREE AND FOUR BEDROOM houses. Also: Male Roommates wanted. 618-444-2267

STUNNING 2-3 BR / 2 BAI
Features full basement, 2 car att gar, vaulted ceiling, deck, fireplace... Immediately available. 567-1259

2BR, 1.5 BA TOWNHOMES I-255/ Horseshoe Lake Rd. area. 15 min. to StL / SIUE. Includes W/ D, some utilities. No pets. No smoking \$600 mo. 618-931-4700. www.fairway-estates.net

GLEN CARBON - MINUTES TO SIUE 2 Bedrooms start at \$605, 2 bedroom townhomes with 1.5 baths start at \$655, with basement \$725, 2 bedroom lofts start at \$675. All units have washer/ dryer hookups and MOST with deck or

patio. For more information, please contact our office at (618) 346-7878 or visit our web site at www.osbornproperties.com 346-7878

GLEN CARBON MINUTES TO SIUE 2 Bedrooms start at \$625, 2 bedroom townhomes with 1.5 baths start at \$675, with basement \$740, 2 bedroom lofts start at \$675. All units have washer/ dryer hookups and MOST with deck or patio. For more information, please contact our office at (618) 346-7878 or visit our web site at www.osbornproperties.com 346-7878

FOR SALE

10 MIN.FROM SIUE 3 bdrm. w/ poss. of being 5 bdrm., 3 bath, 2 car gar. IMMACULATE CONDITION 5157 Stacey Drive, Granite City. \$135,000. www.wainwrightrealty.com 309.523.3338

2 BDRM CONDO for sale Pepperwood Ct. Glen Carbon very clean many upgrades 977-8224 or 288-2447

IMMACULATE 04' DAKOTA 2004 Dodge Dakota SXT, Silver,

48xxx miles, perfect condition, must go fast, \$8900. Call Beth at 540-3841 and leave message or 473-2413

WOODED HOME SITES Eville school district. All utilities underground. 1/2 mile from Governors Parkway. 4 miles to SIUE. Some walkouts \$68,400 & up. 972-0948

HELP WANTED

GOT NIGHT OR INTERNET CLASSES? Three full-time house painters wanted. 7a-4p M-F. Must have reliable transportation. Can lift 100 lbs. Willing to learn. \$\$\$ depend on skills learned. Click the envelope icon to request application (or call 656.9300 and leave your email address). Thanks.

LITTLE CEASARS IS NOW HIRING for all positions, to be filled ASAP! Accepting applications, and hiring at the following locations: Edwardsville 656-8700, Woodriver 254-2888, Troy 667-0084, Granite City 876-2111, Collinsville 343-4140, Shiloh 628-1122, and Highland (Opening Soon). \$7.75 per hour
CUSTOMER SERVICE REP ESS

Data Recovery, Inc. is looking for Customer Service Representatives. Position involves helping clients on the phone and setting up customers in a database. No previous experience necessary. Computer experience helpful. Please email resume and cover letter to: hr@essdr.com

SITTERS WANTED. \$10 or more per hour. Register free for jobs near campus or home. www.student-sitters.com

COLLEGE STUDENTS: We pay up to \$25 per survey. It's 100% free. www.GetPaidToThink.com

PT CHILD CARE STAFF Early Explorations Too, Inc., a quality child care center located 8 mins from campus, is seeking PT staff to work 6:30am-8:30am, 10:30am-2:30am, 4:00pm-6:00pm. These shifts can be stand alone or combined to accommodate student schedules. Please call for further information. 288-9595

MISCELLANEOUS

NOW YOUTUBE IN YOUR AD! It's easy to embed a youtube video in your classified. Show off your

house to rent, your car for sale. (Works great with personals tool)

CHILD CARE Stay at home mom offering part child or after school child care - Leclaire, Columbus, and Lincoln schools. 304-2148

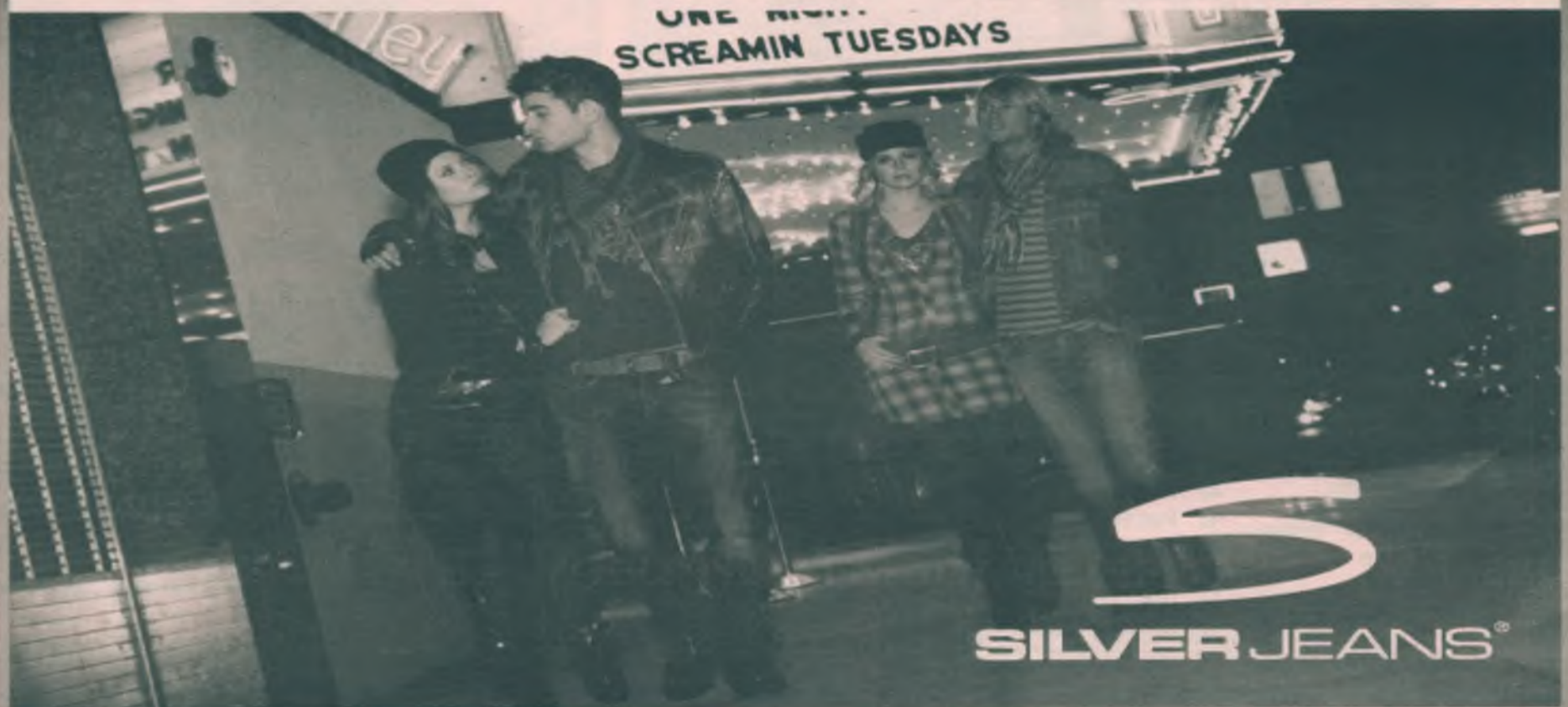
USED BOOKS AT BARGAIN PRICES. Good Buy Bookshop, Lovejoy Library Room 0012, Wednesdays and Thursdays 11 a.m. to 2 p.m. Sponsored by Friends of Lovejoy Library.

SIGMA PI Brothers of the Week: All Brothers for a great Rush Week, Pig Roast, and 2-Year Frats w/ Bats champs. Special thanks to Kyle Worman Arnes Camo. Burro of the week: Bambi for R. Kelly-ing a brother.

PERSONALS

CURIOUS MALE Looking to explore new territories, I will run away with your heart. Contact Jole' at 217-821-8780

Great styles and fits from Silver Jeans!



GLIK'S

gliks.com

Visit www.gliks.com to find your nearest location