

Index

| | |
|-------------|------------|
| News |1-6 |
| Opinion |7 |
| A&E |8-9 |
| Sports |10-14 |
| Puzzles |15 |
| Classifieds |16 |

The **Alestle**¹⁵⁰
Alton - East St. Louis - Edwardsville

**Sellout
crowds
relive
Mississippi
River
Festival**
See A&E



Tuesday, October 2, 2007 www.alestlelive.com Vol. 60, No. 14

Professor protests plagiarism review plan

Calls for external review committee

by **Catherine Klene**
Alestle A&E Editor

An SIUE professor dissatisfied with the current internal committee reviewing plagiarism allegations against Southern Illinois University President Glenn Poshard is calling for other SIUE faculty members to support his statement for an external review committee.

Philosophy professor Robert Ware drafted a statement Friday and e-mailed it to his colleagues to add their signatures if they thought it appropriate.

“Those who are signing it are supporting a fully independent and external review of plagiarism charges against President Poshard,” Ware said.

SIUC Chancellor Fernando Treviño appointed the current review committee, made up of seven SIUC faculty members, two weeks ago. The committee will review Poshard’s 1984 doctoral dissertation and his 1975 master’s thesis for evidence of plagiarism. The original allegations came after the SIUC student newspaper, The Daily Egyptian, released a story accusing Poshard of plagiarising parts of the dissertation.

Although Ware would not release the full content of the statement, he said it will be released in the form of letters to the editor in local media later this week.

Ware said he originally wanted to set up an online petition on Blackboard, but Lovejoy Library Dean Jay Starratt declined his application.

Starratt did not immediately return requests for comment Monday afternoon.

Ware said an internal review, that is, a review performed by faculty members of the SIU system, would not appear unbiased or impartial because the reviewers are under Poshard’s authority.

“In order to be unbiased, it can’t be an internal review,” Ware said.

Ware said he had no reason to doubt the review committee members’ integrity, but he said he believes the public would question the validity of an internal review.

“Unfortunately, President Poshard will never fully clear his name through an

internal review, and our university will never fully clear our name through an internal review,” Ware said.

Tom Woolf, SIUC university communications director, said the university had no comment on the situation.

Ware, who has actively discussed the plagiarism issue on the faculty listserv, said the decision to create a petition of sorts came from his classes.

“One of the things that inspired me to set up an online petition for faculty members were some of my students,” Ware said.

Ware said some of his students were creating a petition to present to

PROFESSOR/pg.6

Rollin’ through the decades



Steve Berry/Alestle

Sophomore Chris Bohnert hurries to complete Alpha Kappa Lambda’s golf cart on the Stratton Quadrangle before Monday’s golf cart parade. Members of the fraternity transformed their cart into a Delorean and won second place for the design.

Homecoming events at a glance

| Tuesday, Oct. 2 | Wednesday, Oct. 3 | Thursday, Oct. 4 |
|---|---|---|
| King and Queen Voting 10 a.m. to 6 p.m. MUC Goshen Lounge | New SIUE Athletic Logo Fashion Show 11:15 a.m. MUC Goshen Lounge | Cougar Karaoke Noon, MUC Goshen Lounge |
| Soda Shop 11:30 a.m. to 1 p.m. Peck Hall Lobby | Cougar Statue Dedication Noon, Stratton Quadrangle | Pep Rally and Bonfire 6:30 p.m. Woodland Bowl (MUC Goshen Lounge – rain) |
| Recliner Races Noon, Stratton Quadrangle | Cosmic Bowling 7 to 9 p.m. Cougar Lanes | Homecoming Dance “Dancin’ Through the Decades” 9 to 11:30 p.m. Meridian Ballroom |
| Livewire: Meg Allison Noon, MUC Goshen Lounge | | |
| Movie: Hairspray 7 p.m., Meridian Ballroom | | |

For Friday, Saturday and Sunday’s events, see Thursday’s Alestle

Science Building remains unfunded
Capital budget sits in House

by **Matthew Schroyer**
Alestle Reporter

For a new \$74.9 million SIUE science building, and the \$25 billion capital plan to fund it, the future remains uncertain.

Although the \$25 billion capital spending plan passed Senate approval two weeks ago, whether it will pass muster in the house, or brought to vote, remains to be seen.

One of the largest points of contention between lawmakers is how revenue gained through an expansion of gambling. The plan would approve three new casinos in Chicago and needs support from both sides of the aisle and a three-fifths majority to pass.

Wednesday, House Speaker Michael Madigan announced public hearings in Chicago and Springfield to examine the bill. Steve Brown, press secretary for Madigan, said the times and dates for the hearings would be decided in the next couple of weeks.

“We will take a good long look at the bill,” Brown said Friday. “We want people to understand the bill and the loose ends.”

Brown said Madigan had not yet adopted a stance on the plan, and would do so after the hearings.

There is a nearly unanimous consensus in the house and senate that the projects are worthy of a capitol

plan. Yet, gaming critics are holding their ground and are arguing against the expansion of gambling.

Doug Dobmeyer, spokesperson for the Task Force to Oppose Casino Gambling in Chicago, sees the gambling expansion as unnecessary and dangerous for the city.

“It will bring a whole lot more people that have or will have addiction into the processes,” Dobmeyer said. “It will not be good for them, and it won’t be good for their families.”

Dobmeyer questions whether the state should pursue more gaming licenses when all of the licenses have not been put to use. Illinois’ 10th gaming license is currently unused, and remains tied up in litigation after the Illinois Gaming Board revoked the license from Emerald Casino in 2005.

“It’s a question of what’s the governments purpose. Is it to help people, or take money out of their pockets?” Dobmeyer said.

David Gross, executive assistant for government relations for Southern Illinois University, said the gambling expansion was the only means to gain revenue for the capitol plan’s projects that legislators could agree on.

“The governor has offered various forms of revenue to pay

SCIENCE BUILDING/pg.6

Police Reports

9-25

Police at the Alton campus took a report of a possible counterfeit \$10 bill. After investigation, the bill was found not to be counterfeit.

Police issued Gregory A. Bradshaw a citation for speeding on South University Drive.

Police responded to a three-vehicle traffic accident on East University Drive. Amar B. Patel was issued a citation for driving too fast for conditions.

Christen M. Ringhausen was issued a citation for a stop sign violation on East University Drive.

Police contacted a Cougar Village resident who was reported to be making threatening phone calls to another student. The Cougar Village resident admitted to making the calls as a prank. The matter will be turned over to Student Affairs.

9-26

Police took a report of a vehicle struck the day before while parked in Lot 6.

Police issued Nicholas Bradd

Osmer a citation for the operation of an uninsured motor vehicle on South University Drive.

Jessica L. Summers was issued a citation for no proof of insurance in Lot 5.

9-27

Police issued Mackenzy F. Koester a citation for the operation of an uninsured motor vehicle on Circle Drive.

9-28

Police responded to the Bursar's Office regarding a subject writing bad checks. The case is under investigation.

Police issued Carla M. Eversole a citation for speeding on Northwest University Drive.

Michael F. Frosch was issued a citation for speeding on Northwest University Drive.

Police responded to Cougar Village to take a report of a resident receiving harassing phone calls.

Police met with a subject reporting his hangtag, speakers, subwoofer and amplifier stolen from his vehicle while it was parked in the Bluff

Hall parking lot.

Ben D. Krewson was issued a citation for a stop sign violation on North University Drive. Police found that Krewson was also wanted on a warrant for failure to appear for a stop sign violation from the SIUE Police. Krewson was brought to the police department where he posted bond and was released. His warrant was canceled after he posted bond.

Police issued Benjamin C. Erwin citations for stop sign violation and driving under the influence on North University Drive. Erwin was taken to the police department where he posted bond and was released.

9-29

Nicholas C. Barnes was issued a citation for disobeying a stop sign on East University Drive. He was also arrested and charged with DUI - Zero Tolerance, unlawful consumption of alcohol by a minor and unlawful possession of drug paraphernalia.

A University Housing employee hit a parked car in front of Cougar Village 522.

Police issued Janette M. Minner a citation for speeding on Circle

Drive.

9-30

Cameron M. Becher was arrested for illegal possession of alcohol by a minor, unlawful possession of cannabis and theft because he was in possession of someone else's driver's license. Becher also received citations for illegal use of another person's driver's license and parking where prohibited. He was taken to the police department where he posted bond and given a notice to appear.

Officers responded to a call to the Cougar Village 411 area where a caller stated that between two and five males were pounding on his door possibly drunk and wanting to fight. Officers looked over the area, located subjects and arrested Justin M. Strait for battery. He was later released because the victim did not want to press charges.

10-1

Officers responded to North University Drive for a report of a taxicab off the roadway. Edwardsville Police also received the call and dispatched an ambulance to the scene.

SCIENCE BUILDING from pg. 1

for it. Those have been rejected," Gross said. "This seems to be the common ground. It does provide critical revenue."

If the bill is not passed within the year, it may complicate construction plans for the university, Gross said. The longer it takes to fund the project, the more it will cost.

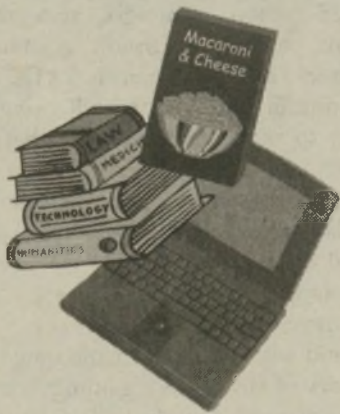
When plans were made in 2005 for the construction of the new science building and renovation of the existing building, the price estimate was \$53 million. Minus a \$2.5 million expansion of laboratories from the original design, the current price tag is set at \$72.4 million. Adjusting for inflation, that's nearly a 30 percent increase over two years, according to figures from the Federal Reserve Bank of Minnesota.

Gross said it was an "interesting time" for Illinois legislature, but said he was "still hopeful a capital bill would pass."

"It would be great for the university," he said.

Matthew Schroyer can be reached at mschroyer@alestlelive.com or 650-3527.

What Can You Get with Your Signature?



Mac + cheese for the semester

Textbooks—some even worth reading

A laptop that keeps you connected

X _____ (sign here)

What Can You Get with Our Signature Student Loan®?

Once you've tapped out all free money and federal student loan options, fund the remaining cost of your education with Sallie Mae's popular private loan—the Signature Student Loan.

Wondering if you qualify? For more information and to apply, go to
SallieMae.com/siue

SALLIE MAE RESERVES THE RIGHT TO MODIFY OR DISCONTINUE LOAN PROGRAMS AT ANY TIME WITHOUT NOTICE.

Signature Student Loans are funded by Sallie Mae Bank® or a Sallie Mae lender partner. Sallie Mae, Sallie Mae Bank, and Signature Student Loan are registered service marks of Sallie Mae, Inc. SLM Corporation and its subsidiaries, including Sallie Mae, Inc., are not sponsored by or agencies of the United States of America. Copyright 2007 by Sallie Mae, Inc. All rights reserved. 9/07

SallieMae | Signature Student Loan®

Web site launched to promote healthy lifestyles

Cougar Balance offers survey to assess risks of future health problems

by **Matthew Schroyer**
Alestle Reporter

A new Web-based program looks to spark health awareness among students and promote comprehensive, healthy living habits.

Cougar Balance, a Web site that advises students on health issues, was launched in August to educate students on health issues and pool campus resources related to health.

Students can log on to the Cougar Balance Web site, create an account and take a “health risk assessment,” a battery of health questions. These questions ask the participant about family medical history, chronic medical issues and frequency of doctor visits. Participants are then asked how often they exercise, how often they consume alcohol and how satisfied they are with their lives.

Based on responses, the Web site evaluates how healthy a student’s lifestyle is, makes suggestions about how to improve health, and provides links to resources for additional information.

Cougar Balance Coordinator Samantha Hackbart said the feedback has been positive since the Web site was brought online.

“We’re giving students information about how they can improve their health,” Hackbart said. “It’s Web based so you can get direct feedback.”

Hackbart said students enrolled in University 112, the freshman experience elective class, were being trained on how to make use of the Web site,

After one round of questions, the Web site reported “high levels of stress” and “sedentary lifestyle,” and

suggested aerobic exercise, strength training and seeking advice from a counselor for handling stress. The Web site also suggested decreasing the amount of red meat in the person’s diet and seeking whole grain products.

When a respondent answered that they had a digestive disorder, the Web site suggested visiting the National Digestive Diseases Information Clearinghouse

“The older you get, the harder it is to change, and it takes your body longer to react to changes.”
-Health Services Director Riane Greenwalt

for more information.

Among other features, Cougar Balance can help students devise a fitness routine and keep track of their progress.

The Web site disclaimer states the recommendations are not a substitution for qualified advice.

Cougar Balance is a joint effort between Dining Services, Counseling Services, Campus Recreation and Health Services, and each plays a part in a theme of “overall health.” Hackbart said representatives from each service provided content for some of the pages.

Health Services Director Riane Greenwalt said the program was designed to give advice so that future health issues can be avoided.

“I think it tries to look at markers for good health.

We are looking for a holistic approach and a proactive approach, not wait until a doctor tells you something (is) wrong,” Greenwalt said.

Greenwalt said participants can take information gained and visit Health Services to receive checkups, cholesterol screening and blood pressure checks based on suggestions given. Greenwalt also said the Web site would suggest smokers stop smoking, something Health Services can help with using tobacco cessation.

The program is also about fostering lasting habits for good health. Greenwalt said college is an important time to get into a habit of eating right, exercising and taking care of one’s body, because it only gets more difficult as time goes on.

“The older you get, the harder it is to change, and it takes your body longer to react to changes,” Greenwalt said. “So for a person 20 years old with elevated cholesterol, it takes about six months to reduce that. If you wait until 40 or 50, it is going to be a much harder challenge.”

Campus Recreation Director Michael Ostrander said a student’s health also has an impact on their performance in college.

“Ultimately it’s about helping them succeed in college and staying focused in their academic careers,” Ostrander said. “This should absolutely help students in developing positive and healthy lifestyles.”

For more information on Cougar Balance, visit siue.motivation.cc

Matthew Schroyer can be reached at mschroyer@alestlelive.com or 650-3527.

Hollywood ★ Tan

1 Month for Only
\$25.00

656-8266

Located next to Denny's in front of Wal-Mart • www.hollywoodtandco.com



PONDEROSA STEAKHOUSE

WE NOW HAVE SAVINGS FOR SIUE STUDENTS!

| | |
|----------|-----------|
| Mon-Thur | 11am-9pm |
| Friday | 11am-10pm |
| Saturday | 8am-10pm |
| Sunday | 8am-9pm |

Tel: (618) 288-0480

4233 South State Route 159
Glen Carbon, IL 62034

By showing your ID Card you will save:

- 10% off your total

OR

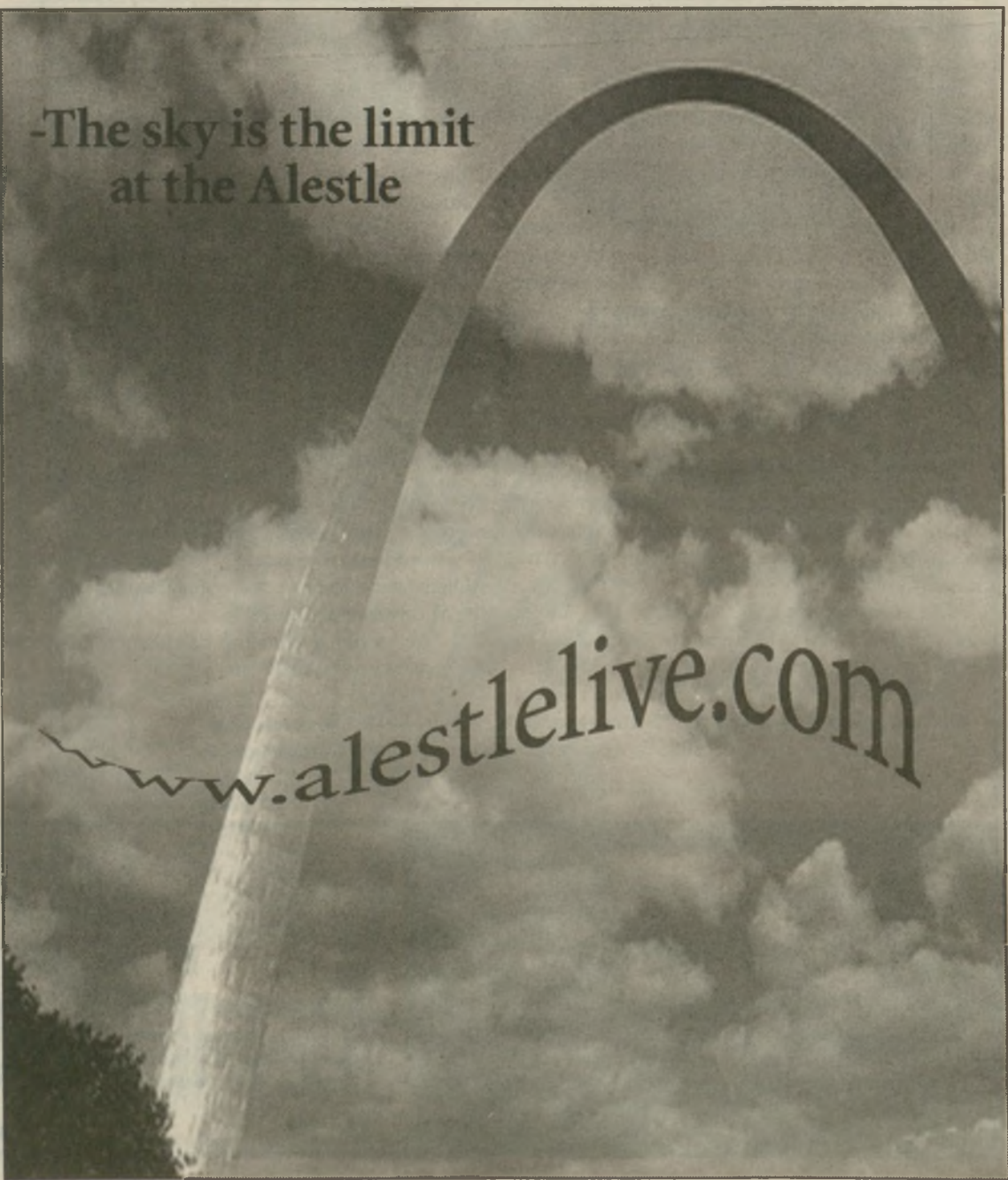
- Take \$5 off each order of 50 wings
- 100 wings = \$10 off
- 200 wings = \$20 off
- 300 wings = \$30 off

These Discounts may not be used in conjunction with each other or any other discount, only valid at Glen Carbon location.

www.alestlelive.com

-The sky is the limit at the Alestle

www.alestlelive.com





Robert Mullen/Alestle

Senior Deven Gray orders a pretzel at Auntie Anne's in the Morris University Center.

Pretzel perfect

Campus Auntie Anne's franchise named to top 5 percent in company

by Katie Gregowicz
Alestle Reporter

For the second time in four years, Auntie Anne's on SIUE's campus has won a prestigious pretzel award.

The "Pretzel Perfect Award" is awarded to the top 5 percent of all Auntie Anne's in the country. There are 950 stores in the United States and some overseas as well said Penny Aldrich, manager of Auntie Anne's.

"To win this award, you must meet pretzel perfect standards," Food Service Administrator Francine Polich-Burns said.

"Auntie Anne's has a three-fold philosophy when it comes to being pretzel perfect; serve fresh hot golden-brown pretzels, friendly courteous service and a sparkling clean store" Polich-Burns said.

Every six to eight weeks, the store is evaluated and receives a grade. These grades, in addition to feedback from secret shoppers and customer comment cards help to decide the winners.

"Store operations help weigh the criteria," said Polich-Burns.

If a store fails to meet the criteria or falls behind, the staff must retrain or risk getting their franchise pulled.

In 2003 when this Auntie Anne's opened, Polich-Burns and Aldrich received two weeks of training in Gap, Penn., where the national headquarters of the store is located and they have not had to retrain since.

The store received the award at the Auntie Anne's Rally in Nashville, Tenn., on Sept. 25. The rally is a convention that is held every other year.

When the store won the Pretzel Perfect award in 2005 the award was called the "Better than the Best" award, but in April of 2005 a new owner

bought the franchise and did a "brand relaunch" in 2006. In addition to the new ownership, this relaunch included a new look and image. The Auntie Anne's logo of a pretzel with a halo over it was established during that time.

Winners receive a crystal award engraved with the store name, a plaque and \$1,000. The award money will be donated to the foundation for the Student Academic Success Center on behalf of the staff, Polich-Burns said.

Polich-Burns also said that not only did our Auntie Anne's win this award because it was in the top 5 percent; it was also in the top 5 percent of the top 5 percent, which means that out of 950 stores, it ranked about 47.5. And out of that 47.5, it ranked about 2.375.

Mary Robinson, director of the Morris University Center, said she is "elated" about the award.

"The staff here is very hard working, and for them to receive recognition is wonderful. Corporate really likes to hold them up as an example," Robinson said.

Auntie Anne's has 13 student workers, without whom Aldrich and Polich-Burns said the store would not have received the award.

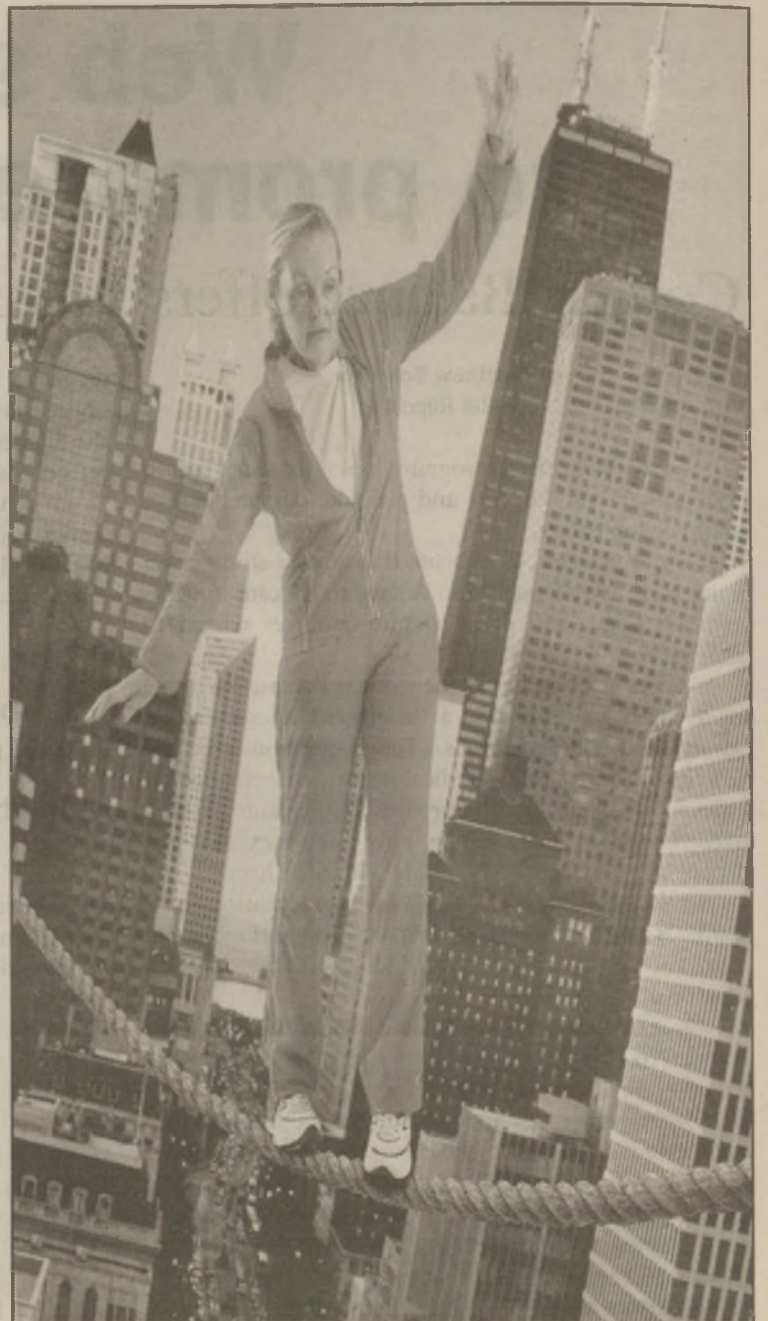
"They're the reason we've won the award. It's quite a team I've got here," Aldrich said.

Polich-Burns said that the staff impresses her every day of the week with their commitment to everything that Auntie Anne's is founded on.

In addition to the two "Pretzel Perfect" awards, Aldrich was runner up for manager of the year for the Midwest region in 2004.

"We absolutely run the best Auntie Anne's in the area," said Polich-Burns.

Katie Gregowicz can be reached at kgregowicz@alestlelive.com or 650-3527.



Don't let gravity be your downfall.

One in three. That's how many adults over 65 fall each year in the United States. Because older bones break more easily, falling injuries for seniors can be traumatic. And too often, life-threatening. Staying active and strong with daily exercise is key — along with making home environments as safe as possible. Take steps now to learn how to keep yourself — or your loved one — from falling. A public service message from the American Academy of Orthopaedic Surgeons and the National Athletic Trainers' Association.

For more information on senior fitness and home safety, visit orthoinfo.org and nata.org.

AAOS
AMERICAN ACADEMY OF
ORTHOPAEDIC SURGEONS



National Athletic
Trainers' Association

ALESTLE CLASSIFIEDS GIVE YOU MORE!

Place your classified ad at a time convenient for you using our easy, secure online interface at alestlelive.com/classifieds

Web Extras Vary

Please schedule your ad carefully as we cannot offer refunds. Corrections must be noted by on the first day the ad appears in the newspaper.

Deadlines:

By 11 a.m. Monday for Tuesday issue
By 11 a.m. Wednesday for Thursday issue

Having trouble? Call 618-650-3528 or e-mail classifieds@alestlelive.com

BASIC PRINT INSERTION RATES:

10 word minimum for all ads.

20 cents a word 1-2 insertions, per insertion

19 cents a word 3-4 insertions, per insertion

18 cents a word 5-19 insertions, per insertion

17 cents a word 20+ insertions, per insertion

Print Extras:

All bold, additional \$5

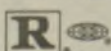
Alestle Office Hours (MUC 2022):
8 a.m. - 4:30 p.m. Mon-Fri



LOVE BLOWS

BEN STILLER

THE HEARTBREAK KID



HeartbreakKidMovie.com

Copyright © 2007
DreamWorks LLC.
All Rights Reserved.

DREAMWORKS
PICTURES®

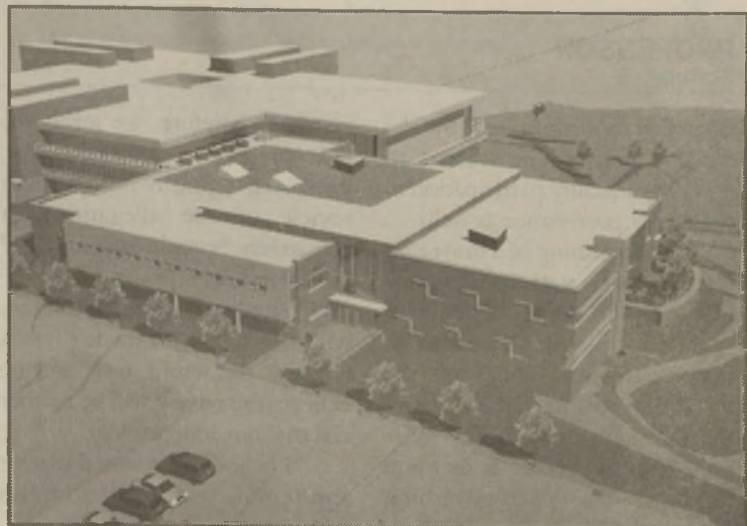


image courtesy Lora Flamm Miles
This architectural rendering shows the proposed Student Academic Success Center, which will be added to the Morris University Center. The center is projected to be completed by fall 2009.

Saving up to branch out

University to seek Student Academic Success Center bids in spring

by Katie Gregowicz
Alestle Reporter

The \$55.20 Student Academic Success Center fee students pay each semester has them investing in the university's future – literally.

This fee covers the costs for the planned Student Academic Success Center, which will be added onto the Morris University Center in the next few years. The SIUE Web site says this center will "provide students with a central location to have their academic support and personal needs addressed."

Assistant Vice Chancellor for Student Affairs Lora Flamm Miles said this new addition to the MUC will house many services, including Disability Support Services, Health Services, Counseling Services, Student Opportunities for Academic Success, Academic Advising, Career Development Center, International Student Services, Student Government and other organizations.

"A nice thing is that this is going to put all student services in one building and frees up space in others," Flamm Miles said.

She said construction documents got approved by the board at the September board meeting. Flamm Miles also said that the university plans to seek bids in spring 2008.

If all goes according to plan, construction should start in late spring or early summer of 2008 and will be finished by fall 2009.

Flamm Miles said for the 2008 fiscal year, the established student fee for the center is \$110.40, or \$55.20 per semester. There are three phases to this fee. Phase one paid for the

design of the building. Phase two started this school year and will pay for the debt the university will acquire when it sells bonds. Flamm Miles said bonds are "how we finance the project."

"It's like a getting a mortgage for a house," she said.

Phase three will fund the maintenance of the finished building.

Coordinator of Greek Life John Davenport estimates about 1,000 square feet will be added onto the Kimmel Leadership Center when the SASC is built. He said that in addition to adding offices, the center will provide storage space for another 10 to 12 organizations and services.

Student Government will move into the new part of the building and other organizations will be able to take their old space.

"This addition will be good because resources and support will all be in one area so you don't have to run all over," Davenport said.

Flamm Miles said many of the services being moved into the SASC now have offices in Peck Hall, such as Student Opportunities for Academic Results and Academic Advising. She hopes the opening space will be turned into more classrooms.

With the new additions, rooms in Kimmel that face Circle Drive will have their windows replaced with brick so new rooms can be built next door to them.

"It'll be a mess in here for awhile, but it will be worth it when we get the finished product," Davenport said.

Katie Gregowicz can be reached at kgregowicz@alestlelive.com or 650-3527.

CASINO Night

9PM-1AM
MUC Ballroom
Oct. 5th

Mocktails & Snacks

Hold 'em

Magicians prizes! FREE!

For Your Entertainment!

Roulette

Craps

BLACKJACK

STUFF - A - BEAR

\$10 ea. limit 2

- tigers
- dogs
- giraffe
- penguins
- & many more!

Sponsored by CAB
www.siu.edu/cab

CAB
Campus Activities Board

Join the Club! | Cougar CLUB

TheBANK of Edwardsville
The People You Know & Trust

Continue Your "Winning Streak"

Stop By The Cougar Banking Center's Open House Event

Saturday, Oct. 6
8am - 2pm

FREE Refreshments Served

COUGAR BANKING WITH COUGAR PRIDE

www.cougarbanking.com

Walgreens



Great Taste

24:7

And That's No Bull!

When it has to be a late night, it has to be

24:7

ENERGY DRINK

- Boosts energy • Helps you focus
- Increases metabolism
- Regular, Cherry, Lemon-Lime and Sugar-Free flavors

Your Nearest Walgreens
some are 24:7 too!

Main (New 159) & Vandalia
102 W. Vandalia St.
Store Phone: (618) 692-7251

W 75¢ Off



24:7

ENERGY DRINK
16 oz.



Reg. \$1.99. Submit coupon with order.
Limit 1 coupon per order.
Offer valid at participating Walgreens.
Offer expires 12/31/07.

Plus deposit where required

Walgreens In-Store Coupon

PROFESSOR

from pg. 1

administration. Inspired by the student activism, he wanted to encourage faculty participation in university governance as well.

"The meaning of a university faculty has traditionally, for hundreds of years, been active participation in the governance of the university and in the resolution of important issues that the university faces," Ware said. "The university is first and foremost a self-governing community of scholars, and that's the way it's always been."

Faculty Senate President Kay Covington said Ware and any other faculty member has the freedom to say whatever he or she likes, but the Faculty Senate's position remains the same.

"The Faculty Senate stands by the statement that we made previously," Covington said.

The Faculty Senate statement, released in September, is as follows:

"The Faculty Senate of Southern Illinois University Edwardsville has the utmost confidence in the ability of SIU to provide due process to any and all employees, regardless of position or length of service. We also have equal confidence in the clarity and appropriateness of those policies governing plagiarism and academic integrity already in place within the SIU

system. Therefore, we await the outcomes of a comprehensive, unbiased, and independent review of the allegations of plagiarism brought against SIU President Glenn Poshard."

Ware said while he agrees with this statement, he felt it was made at the wrong time and he believes the review will be neither external nor independent.

"I believe we released it at an appropriate time," Covington said.

Ware said he was not sure how many faculty members would sign his statement.

"In my experience, most faculty members at SIUE do not prefer to get involved in issues like this," Ware said.

Ware said the ultimate goal of his statement was to have some influence in moving his colleagues at SIU toward a fully independent and external review, and also to promote faculty activism and participation in upholding academic standards.

"My intent was, most important of all, to fill my responsibility as an SIUE professor to uphold academic stands of the university," Ware said.

Catherine Klene can be reached at cklene@alestlelive.com or 650-3527.

AZTECTAN & Salon

#4 Club Centre,
Edwardsville, IL
(next to MotoMart)

Phone: 618-692-4531

visit us on the web!
aztectansalon.com

Tan until 2008
ONLY...WOW!
\$95.95

SIUE
Discounts

We match
Competitors Ads



What's Up?



find out online at
www.alestlelive.com

Alestle
Alton - East St. Louis - Edwardsville

Megan McClure
Editor in Chief

Holly Meyer
Managing Editor

Justin Gibson
Opinion Editor

Catherine Klene
A&E Editor

Tony Patrico
Sports Editor

Steve Berry
Photo Editor

Darlene Wyatt
Chief Copy Editor

Katie Patterson
Kristen Reber
Copy Editors

Megan Gattung
Andrea Hicks
Advertising Manager

Molly Maurer
Maggie Rhynes
Brent Roth
Lori Schueler
Graphics/Production

Lance Speere
Adviser

Mike Genovese
Graphics Supervisor

Aria Capel
Rami Moussawi
Graduate Assistant

Debbie Roberts
Office Manager

Ashlee Glover
Jessica Wallace
Brittany Thomas
Office Secretaries

Letters to the Editor Policy:

The editors, staff and publishers of the Alestle believe in the free exchange of ideas, concerns and opinions and will publish as many letters as possible.

Letters may be turned in at the Alestle office located in the Morris University Center, Room 2022 or via e-mail at jgibson@alestlelive.com.

All hard copy letters should be typed and double-spaced. Letters should be no longer than 500 words.

Please include phone number, signature, class rank and major.

We reserve the right to edit letters for grammar and content. However, care will be taken to ensure that the letter's message is not lost or altered.

Letters to the editor will not be printed anonymously except under extreme circumstances.

We reserve the right to reject letters.

About the Alestle:

One copy of the Alestle is no charge. Additional copies cost 25 cents.

The Alestle is a member of the Illinois College Press Association, the Associated Collegiate Press and U-WIRE.

The name Alestle is an acronym derived from the names of the three campus locations of Southern Illinois University Edwardsville: Alton, East St. Louis and Edwardsville.

The Alestle is published on Tuesdays and Thursdays during fall and spring semesters and on Wednesdays during summer semesters. For more information, call 650-3528.

Have a comment? Let us know!

Send us an e-mail:
jgibson@alestlelive.com
The Alestle
Campus Box 1167
Edwardsville, IL. 62026-1167



Students to blame for writer's discontent

APATHY - 1.) release or freedom from passion, excitement, or emotion; 2.) absence or lack of feeling or emotion, absence or lack of interest or concern (Courtesy of Webster's Third New International Dictionary).

So, now that you have read the dictionary definition of "apathy," where do you fall? Are you one of the stoics, released from your own passions? Or, rather, are you one of the people who could just care less? Either way, stop whining and actually get up and get your voice heard!

Seriously, the apathy among the student body at SIUE is sickening. What do you mean you are not apathetic? We have issues ranging from offensive art pieces, changes in school regulations, parking services having a heyday with fines, underpaid and overworked employees, (what could be deemed) improperly spent school funds, controversy surrounding

student organizations, controversies surrounding the world at large, I mean the list just goes on and on. Nothing. Zip. Zilch. Zero. Nada.

Every once in awhile you might get someone who makes a bold statement, but other than that it's generally staff and guest writers (Gibson, Groves, Patrico, and myself) who are left to pick up the apathetic slack in our own student community.

I have to take a moment and applaud Britney Barr for her latest article. Girlfriend, way to go! You rocked out an awesome opinion about something that mattered, and not an article on what SIUE would be like as a musical (which, by the way, completely neglected the theater, music and dance departments). Bravo!

I guess it just doesn't matter, right? It's only a student newspaper. Sure, the articles can be bland at times. Sure, the sports section is slowly devouring the Arts & Entertainment section. Sure, the front page stories might be considered dry.

But really, none of it matters. I mean, after all, it's only a student newspaper.

I wonder what the Southern Illinois University Carbondale's Daily Egyptian staff says about our newspaper. I bet they're have a gay ol' time laughing at the fact that there is one "crazy liberal" trying to get his voice heard and "mix things up."

You know what, don't consider it your right to judge the student newspaper if you're not even bold enough to get your own voice heard. Don't come up to me telling me I am wrong about my opinion, when you don't even have the ... well, you know what, to get your own voice heard.

But hey, like I said, it doesn't really matter; I mean it's only our student newspaper.

Ho hum ... I guess this "crazy liberal" is just going to have to represent the entire SIUE student body's opinion.

That works for me.

David Whitacre

More support shown for clerical staff

I am writing in response to Justin Gibson's article in Thursday's edition of the Alestle. I would like to second his opinion in support of the American Federation of State, County and Municipal Employees Local 2887.

Without the help and unwavering support of our wonderful clerical staff, countless students would be lost. No matter how large or small the task, there is always a department secretary there to help, even when other faculty members seem oblivious.

As Captain of Cougar Baja, a student engineering team, I have asked our Mechanical Engineering Department Secretary for numerous favors and I have never been left disappointed. The support staff has always been willing to go above and beyond the call of duty, which is a quality often

lacking in other facets of the university. I prefer to look at the clerical staff as the grease that keeps the old, weathered wheel turning. In that I mean, if the grease is doing a sufficient or above average job, it often goes unnoticed, while a wheel lacking that grease squeaks, rattles, and shimmies until it drives everyone crazy. Well folks, our clerical staff is the proverbial good grease and it too often goes unnoticed.

The secretaries and clerks of this university deserve to be compensated according to their importance in the daily survival of this institution. According to Gibson, the lowest paid of the clerical staff make only \$9.56 per hour. That equates out to under \$18,000 per year, which is well below the 2006 Illinois poverty level of \$20,000 for a family of four.

Regardless of education or experience, all working Americans deserve to live above the poverty line. The raise of 50 cents per hour per employee for 300 employees adds to only 0.05

percent of the Southern Illinois University system budget. That's only five one-hundredths of one percent! The hard-working men and women of AFSCME Local 2887 deserve this extra compensation.

Please take time to say thank you to your department clerical staff next time you cross paths. The people behind the desks have real families, with real children and real needs. They deserve fair wages for their work, and they ought to have the full support of the entire university community — students, faculty, and staff.

I would like to end this note with a personal thank you to the clerical staff of SIUE. Regardless of contract battles, the students know how valuable you are to the wellbeing of this institution.

So, thank you and good luck AFSCME Local 2887!

Miles Musick
Senior
Mechanical Engineering

Cougar statue not a good fit

There is a naked man in the Lovejoy Library, and I bet you've seen him.

He stands about seven feet tall and is the strong, quiet type. If the nudist hasn't upset you, it's probably because people don't seem to mind a man in nude as long as the man is buff.

"The Walking Man," Auguste Rodin's armless, headless tribute to the human figure, has been a fixture of the Lovejoy Library since 1965. It's quite impressive and inspired the great poet Carl Sandburg to write a few lines. "You make us proud of our legs, old man," he once wrote.

While many people may have been able to miss the big naked dude in the library, nobody has been able to miss the gaping hole in front of the Morris University Center. That's for two big reasons: it disrupts the flow of students rushing into the MUC and is a huge eyesore.

Soon, one of those problems will be solved, as the hole will be filled with an 11 foot long bronze cougar. Yes, the Walking Man will gain a friend on campus. And they will have something in common, as cougars are natural nudists. Unlike the walking man, however, the bronze cougar will not be placed inconspicuously, and congestion to the entrance of the MUC will likely continue.

It seems harmless enough. We are the Cougars, we should have a cougar on campus. SIUE has been cougarless since 1987, when Kyna was given to an animal park due to expense and liability. And the means seemed harmless enough; a \$39,000 fund raising effort through selling engraved bricks and trendy wristbands. No money taken from the university's budget no harm done. And we need a mascot to rally around, right?

But, what could have been done with the money? It's not a tremendous amount of money, but that could put a needy student through five years of college. There are more worthy endeavors than erecting a statue of an animal whose natural habitat is nearly 800 miles west of here. If the Walking Man had a head, would he be shaking it?



Matthew Schroyer

Matthew Schroyer can be reached at mschroyer@alestlelive.com or 650-3527.

FLASHBACK

Sell-out crowd relives Mississippi River Festival

by Matthew Schroyer

Alestle Reporter

For the nearly 400 that stepped into the Meridian Ballroom of the Morris University Center Thursday and Friday night, priceless memories became reality once more, and history was remade.

Friends were reunited, fond times were remembered, dancing and laughter ensued as the Flashback to the Mississippi River Festival rocked the at-capacity crowd in the MUC. They came from as far away as Kansas City and Texas.

The crowd represented all walks of life, from faculty to bankers, and even a member of the Illinois chapter of the Hell's Angels. Some had been in the crowds of the MRF, some had been students and still others had worked and helped pay for their education at the MRF. And yet, they were linked by a common bond – fond memories of the festival, which ran annually from 1969 to 1980.

"I expected to sit through a four-hour slideshow," SIUE alumnus Rick Scheibel said. "I wasn't expecting so much festivity, I'm really having a good time."

When asked how many experiences at the MRF he remembered, Scheibel's answer was frank.

"Few," he said. "I had a good time!"

Lying on blankets in the front of the stage, in the back sitting in chairs or standing around chatting, the crowd took in the ambiance set by Alumni Affairs. On stage rested speakers salvaged from the MRF, which cranked out the music of the 1970s as played by "Radio" Rich Dalton and his band The Classics.

Among the songs most popular with the crowd were REO Speedwagon's "Roll with the Changes," "Get Together" by the Youngbloods, "Your Momma Don't Dance" by Loggins and Messina and "The Weight" by The Band.

"They really struck a cord," bassist Chuck Bonano said of the songs. "They were definitely into it. It was like that festival atmosphere, people were singing and dancing and getting into it. It was a very cool thing."

"Flashback" brought back memories for Dalton, who said there were many aspects of the university that hadn't changed since his time at SIUE.

"I sort of like the university atmosphere," Dalton said. "I like to see all the kids walking around and reading."



Robert Mullen/Alestle

Top: Audience members relax on picnic blankets while listening to the rock band Rich Dalton and The Classics at the Flashback to the Mississippi River Festival.

Right: Director of the Flashback to the MRF Lyle Ward speaks at the MRF.



Steve Berry/Alestle

Audience members watch a performer at Flashback to the Mississippi River Festival Friday night in the Meridian Ballroom. The event was a trip back to the original MRFs in the 1960s and 1970s.

Behind The Classics were suspended white, tent-like structures, one of which alternately displayed still images from the MRF and video of the musicians playing. Dual screens above and on either side of the stage showed the same footage.

Between songs, Dalton recounted experiences from the MRF, such as the time Bob Dylan made a rare appearance, and of the powerful sounds of The Who.

After the first set of music, two MRF films were projected on the screens, documenting the massive effort to organize the event, make preparations and finally to raise the enormous tent.

During the intermission, Bob Heil of Heil Sound told the crowd of his experiences preparing a customized sound system for rock acts of the MRF.

The sound system eventually became so popular with musicians and famous that it was inducted into the Rock and Roll Hall of Fame in Cleveland.

Alumni Affairs Director Steve Jankowski said he was "thrilled" with the turnout.

"When we started talking about the idea on campus, you could literally see people getting excited about this," Jankowski said. "When we started to structure the event, the excitement went up another couple of notches."

Dalton had spoken about "Flashback" on his radio show on KHITS 96, and tickets sold out for Thursday's concert within hours of being made available. Jankowski was "amazed" about the swift ticket sales.

"We were very thankful we

were able to pull together another night, and all the pieces came together," Jankowski said.

Jankowski said he met people at "Flashback" he had not seen in 20 years or more, and saw that other concertgoers had similar experiences.

"I've seen people walk up and spontaneously hug another person," Jankowski said.

"And that's what this is all about."

Matthew Schroyer can be reached at mschroyer@alestlelive.com or 650-3531.



For more photos and video footage from
Flashback to the MRF
log on to
alestle live .com

Collins makes SIUE comeback

by **Matthew Schroyer**
Alestle Reporter

The line started forming more than an hour before the concert, and by the time the doors to the Morris University Center's Meridian Ballroom swung open at 7:30 p.m. Saturday, it had snaked around the Goshen Lounge and neared the front door.

Some wore commemorative Mississippi River Festival shirts they had purchased the previous night at the "Flashback to the MRE," produced by Alumni Affairs. For some, it would be the third night in a row they had come to SIUE to relive moments from the MRE.

Lyle Ward, who at the age of 21 directed the MRF in its beginnings and spoke at "Flashback" the previous night, was excited to see Judy Collins perform once more.

"They may have seen her five times," Ward said. "They came over and over and over again."

With a filled and darkened Meridian Ballroom, Judy Collins took the stage shortly after 8 p.m., and was instantly greeted with a standing ovation. Without

a word, she broke into song and played "Both Sides Now," from her Grammy-award winning 1967 album, "Wildflowers."

She received thunderous applause after the first line of the song, "bows and flows of angel hair," when the audience recognized the song. The song was followed quickly by "Someday Soon," which she included on the follow-up album to "Wildflowers," 1968's "Who Knows Where the Time Goes."

Despite being a few years shy of 70, Collins sung with the strong, unique voice that made her a folk legend and a hit with the MRF crowd. Collins did not shy away from her age, either, coyly changing the last lines of Paul McCartney and John Lennon's "When I'm Sixty-Four" to "Will you still need me when I'm 84?"

"Oh my God, we were so young!" Collins said, reflecting on the years she played at the MRE. "We couldn't imagine what 30 looked like!"

Collins showed some of the political fire that made her a prominent activist in the '60s and '70s, asking the audience to pray for monks in Myanmar. For the most part though, she let her

singing voice do the talking.

"(Vietnam) was a long war, and I'm praying this won't last much longer. This right now is my answer to the political problems," Collins said, before playing "We Can Work it Out," also featured on her newest album, "Judy Collins sings Lennon and McCartney."

Collins took a few moments between songs in her first set to talk about her experiences at the MRE. Collins first performed at the MRF in 1970 and returned in 1971, 1973, 1975 and 1976.

"Everybody was here," Collins said, recalling times spent with fellow musicians Joan Baez, Bob Dylan, Arlo Guthrie and others who played the MRE. "It's the story of my life. This was my class."

In a true Judy Collins tradition, she ended the evening by encouraging the audience to



Derek Manuat/Alestle

Folk legend Judy Collins performs Saturday night as part of the 2007 Arts & Issues Season. Collins has performed at SIUE five times in the past as part of the historic Mississippi River Festival.

sing "Amazing Grace" with her.

"She was very nice, very gracious," Arts & Issues Director Grant Andree said. "We gave her a MRF book and she got a big kick out of that, and seeing all her friends that went through."

Andree said the ticket sales had been strong, and that he was looking forward to another MRF alum performance, Arlo Guthrie,

scheduled for March 8, 2008.

"I think it's great and it shows how much people in the area loved the Mississippi River Festival," Andree said. "People have a lot of deep feelings for it."

Matthew Schroyer can be reached at mschroyer@alestlelive.com or 650-3531.

Homecoming dance to groove through time

by **Lindsay Stuart**
Alestle Reporter

In one corner stands Marilyn Monroe, posing for a picture with a young man in a tie-dye shirt. Across the room Elvis is standing next to a girl in a poodle skirt. Meanwhile, "Get Down Tonight" is blaring from a nearby speaker.

This Thursday, Residence Housing Association is hosting a homecoming dance for all SIUE students. The theme for the dance is "Dancin' Through the Decades."

Residence Housing Association President Emily Wilken said the theme corresponds with other events taking place on campus this year.

"We wanted to tie into the 50th anniversary celebration as well as go with the homecoming week theme, which is 'Roarin' Through the Decades,' so we thought it would be a fun time, with all the reminiscing going on around campus, to bring back things from different generations," Wilken said.

RHA member Emily Kreke said the dance will revolve entirely around the decades theme, with different dance tables divided into the decades.

"We're celebrating the '50s, '60s, '70s and '80s," Kreke said. "We are going to have appropriate colors and decorations and pop icons from each decade, and we've also got trivia on each table. The DJ will also be playing music from each time period. We are

also encouraging every one to come dressed as their favorite decade, so we should have a wide mixture of costumes and stuff."

RHA members have gone all out, making decorations and working to transform the Morris University Center's Meridian Ballroom into a decade flashback.

"There is going to be a silhouette or caricature of Marilyn Monroe and Elvis that people can take their pictures by," Wilken said. "Our committee has also worked very hard on making cardboard cut-outs of different objects from each decade. For instance, there's a jukebox for one decade, and a cassette tape for another one and so on."

In addition to the trivia and life-size Marilyn and Elvis, RHA will be offering refreshments and beverages to help recharge the all-danced-out students.

"We will be serving snacks, cookies and drinks to attendees," RHA member Breanna Closen said. "We have a great DJ that will play a variety of music. We've created a club atmosphere with the DJ, lighting, and dance floor. We also have a special video clip to celebrate 'Dancin' Through the Decades.'"

Those in attendance will also have the opportunity to vote for SIUE's homecoming prince and princess.

"Each of the residence halls gets to nominate two freshman or sophomore students, so instead of the king and

queen pageant like they do at the soccer games, we are doing the prince and princess competition," Kreke said.

When students arrive at the dance, they will vote, and the winners will be announced between 10 and 10:30 p.m.

According to Kreke, this is RHA's second or third dance.

"RHA is just around five years old, so I'm not sure how long, exactly, they have been doing it," Kreke said. "Last year's theme was the luau."

This event has been in the works for months.

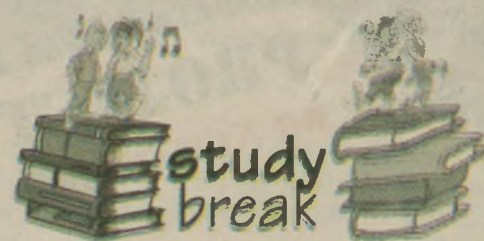
"We started designing decorations over the summer, but we really began our planning as soon as we got to SIUE in August. We're really excited how everything has turned out, and Emily and I can't wait to see it all come together," Closen said.

The dance is free for SIUE students, but an SIUE Cougar Card is needed to get in the door.

"We just want to encourage all students to come," Kreke said. "It's going to be a great time. Anyone and everyone who can come, we would love for you to attend."

The dance will take place in the Morris University Center's Meridian Ballroom from 9 to 11:30 p.m. Thursday.

Lindsay Stuart can be reached at lstuart@alestlelive.com or 650-3531.



Tuesday

Geri Schrab Archeology Program
7 p.m., Missouri History Museum
Free, call (314) 746-4599

Phil Lesh and Friends

7:30 p.m., The Pageant
\$49.50, call (314) 726-6161

Wednesday

Homecoming Movie "Hairspray"

7 p.m., Morris University Center's Meridian Ballroom
Free, contact John Davenport at jdavenp@siue.edu

Thursday

Battle of the Bands

8 p.m., Cicero's
\$8, call (314) 862-0009

Boyz II Men

7 p.m. and 9 p.m., Bottleneck Blues Bar
\$45, contact Ameristar Casino at (636) 949-7777

SIUE Sculpture Club Trivia Night

7 p.m., Edwardsville American Legion Hall
\$10, contact Emily Dunlap at (618) 972-0391

Join us in the Morris University Center's Goshen Lounge
Wednesday, October 3 - 11:15 a.m.

Unveiling of the New University Cougar
Logo & Honoring the 2007 SIUE Softball
Team's National Championship

PROJECT: NEW SIUE COUGAR LOGO
DO NOT OPEN UNTIL WEDNESDAY, OCTOBER 3

TOP SECRET

Men's soccer splits weekend road series against NKU, Bellarmine

Record improves to 6-2-1 overall

by Kyle Wiese
Alestle Reporter

The SIUE Men's Soccer team lost a heartbreaking game at Northern Kentucky Friday 1-0 in double overtime, but was able to rebound Sunday to get a 4-0 win at Bellarmine.

SIUE was without Mike Jones and Zach Bauer for both games, stemming from the fight after last Sunday's game against Lewis.

"They are two great players and it's tough to play such a good team without them," SIUE Head Coach Ed Huneke said.

In Friday's game, SIUE and the second-ranked Northern Kentucky Norse battled in a double-overtime thriller, despite the fact that Northern Kentucky out shot the Cougars 18-5.

Goalkeeper Greg Crook recorded five saves and was able to keep Northern Kentucky scoreless until double overtime despite the barrage of shots coming from the Norse.

"Greg was under a lot of pressure and so was our defense, but truthfully the way we lost soured the evening," Huneke said.

The goal for the Norse came in the 107th minute in double overtime on a penalty kick as a result of a controversial foul call on SIUE.

On the penalty kick, Braden Bishop was able to beat Crook to score the only goal of the game and give the win to the Norse.

In Sunday's game, SIUE was able to put the tough loss to Northern Kentucky past them to get a win against Bellarmine.

"I was concerned after Friday's game, because we didn't want to end the weekend with two losses, but I was proud of how we responded," Huneke said.

The Cougars were out shot by Bellarmine 17-14, but were able to capitalize on the chances they were given.

Bob Ridder scored his third goal of the year in the 32nd minute and added two assists on Kevin Bielicki's goal in the 46th minute and Tim Weir's second of his two goals.

"The goal was just a tap in and Bob Ridder led me perfectly and put it right on my foot," Bielicki said.

Weir's goals were his first two of the season, and they came in the 61st and 76th minutes of the game.

Crook recorded six saves in the game and his fifth shutout of the season and is now only giving up an average of 0.57 goals a game.

"Greg has dealt with a lot of adversity this season, but being a senior, I expected that



Steve Berry/Alestle

Freshmen Ryan Wilhelm sneaks past an opponent during a game earlier this year. The Cougars are now 6-2-1 overall.

he would be able to overcome it," Huneke said.

SIUE will take on the University of Missouri-St. Louis on Friday then the University of Missouri-Rolla on Sunday.

Jones and Bauer will be available after having served the suspensions handed down by the Great Lakes Valley Conference.

"It was tough to be without those two guys, but I guess they GLVC made the right decision," Bielicki said. "Now we have them back and everything is back to normal."

SIUE was awarded the victory in last Sunday's game against Lewis, and after this past weekend's games their record has moved to 6-2-1 overall and 6-1-1 in the GLVC.

Kyle Wiese can be reached at kwiese@alestlelive.com or 650-3524.

Volleyball GLVC undefeated streak snapped

by Zach Groves
Alestle Reporter

Whenever SIUE faces Great Lakes Valley Conference rivals Northern Kentucky University or University of Indianapolis in either soccer or golf, it is almost sure to have an intense match on its hands.

SIUE volleyball, like its soccer counterpart, took on a nationally-ranked NKU squad Friday night only to fall 3-1 to blemish its otherwise spotless GLVC record. The Cougars then jumped ahead 1-0 early Saturday against the Indianapolis Greyhounds but could not keep up in the final three games to drop their second straight match on the three-game weekend road trip.

SIUE first extended its previously undefeated conference mark with win number seven on a 3-0 sweep against Saint Joseph's College Thursday night in Rensselaer, Ind.

SIUE Head Coach Todd Gober said No. 24-ranked NKU boasts two powerful hitters in Liz Holmes and Kristina Eisenmenger, both of whom were key to the Norse's success Friday.

Holmes recorded 23 kills and Eisenmenger finished with 15 against four Cougars with double-digit kills. Juniors Mallory Clements and Emily Rahn each tied for

12 on the night to lead the team.

"They ran a very quick offense," Gober said. "We prepared for them but I got to give them credit. They did their job."

SIUE lost to NKU for the first time since Sept. 28, 2002, according to the Norse's official Web site.

Had SIUE won Friday night, it would have played an Indianapolis team that was also undefeated in the conference. However, Casey Chrzastowski's 23 kills helped penetrate a Cougar defense that out blocked the Greyhounds and kept her team alive as the only undefeated squad in conference play.

"Their passing was phenomenal, they couldn't get anything to fall," junior outside hitter Kate Hofeldt said about the Greyhound offense.

Hofeldt added that Chrzastowski was part of an outside unit that was "kind of hard to stop."

"They got a couple of lucky bounces," Hofeldt said. "It's all about momentum."

Rahn again led the Cougars in kills with 14. Sophomore libero Tiffany Turner collected 18 digs in the effort.

After the matches, Turner reflected on what happened against NKU and Indianapolis and said while they were "smart" and "tough," the Cougars just need to

worry about their home matches against the University of Wisconsin-Parkside and Lewis University.

"That's old news," Turner said about NKU and Indianapolis. "This week we'll be working on next weekend."

SIUE will play "home" matches at 7 p.m. Friday and 3 p.m. Saturday, but the Cougars will not play at the Vadalabene Center. According to an e-mail from Sports Information, they will play at the Edwardsville High School gym because of the 2007 Athletics Hall of Fame Dinner Saturday.

Gober said the change in home location is small compared to what the No. 12-ranked team expects to accomplish against the Rangers and the Flyers, especially now that trying for home-court advantage in the GLVC tournament is all but moot.

"Our goal is to maintain the number one seed in our division," Gober said. "We can no longer worry about what other teams do (outside the west division), Our job is to continue to win, play hard."

Zach Groves can be reached at zgroves@alestlelive.com or 650-3524.

Women's soccer scores two victories

by Kyle Wiese
Alestle Reporter

The SIUE Women's Soccer team was able to get two conference wins on the road at Northern Kentucky on Friday and Bellarmine on Sunday by the score of 3-2 and 2-1, respectively.

In Friday's game, SIUE had to dig out of an early hole after Northern Kentucky scored their first goal in the 30th minute on a shot from Morgan Price.

The Cougars were able to respond in the 46th minute with Sade Akpore's first goal of the season, which came unassisted.

SIUE's first lead came in the 58th minute from Correen Roark's second goal of the season on assists from Kelly Limpert and Katie Yearian.

"I love passing too, so to me getting an assist is just as good as getting a goal," Yearian said.

Yearian continued to be one of the Cougars go to offensive players by scoring her seventh goal of the season in the 63rd minute.

"We moved Katie from wingman to striker and every since we moved her to striker she has been scoring goals," SIUE Head Coach Lynda Bowers said.

Goalkeepers Kim Roady and Kaci Backs recorded a combined five saves and each allowed a goal.

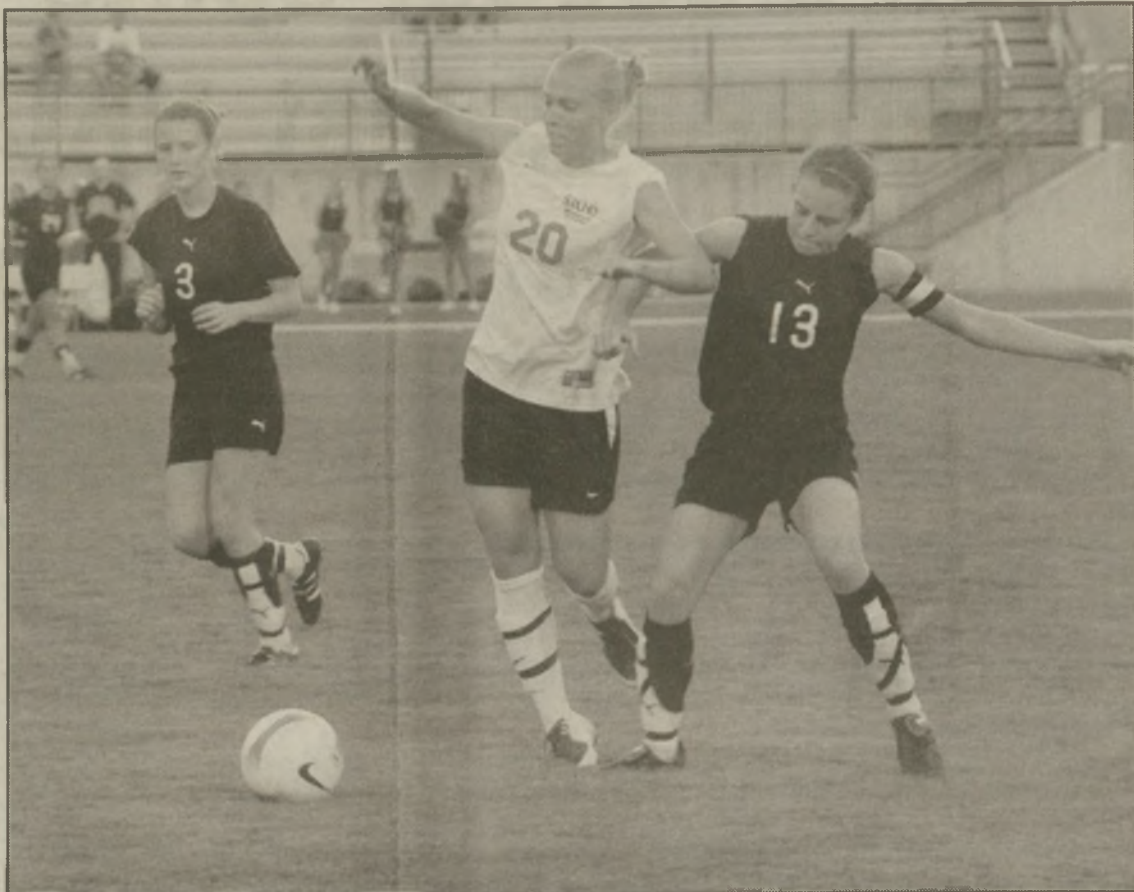
"We try to give both goalkeepers a little bit of time," SIUE Head Coach Lynda Bowers said. "They kind of operate more as a team than anything."

Northern Kentucky was able to cut the lead to 3-2 in the 82nd minute on a goal from Ashley Warndorf.

SIUE was out shot by Northern Kentucky 15-11 in the game and had five fewer corner kick opportunities.

In Sunday's game against Bellarmine, SIUE was out shot 12-9, however the Cougars were able to convert on more chances.

"I think that our chances were more dangerous than theirs, because we were able to jump out to a lead, but that is taking nothing away from them, because there are a good team," Bowers said.



Steve Berry/Alestle

Junior Alison Stambaugh (in white) slides between two Kentucky Wesleyan defenders earlier this year. The Cougars will take on University of Missouri-St. Louis on Oct. 5.

WOMENS SOCCER/pg.14

SOUTHERN ILLINOIS UNIVERSITY
EDWARDSVILLE



HOMECOMING

COUGARS ROARING THROUGH THE DECADES

October 1-7, 2007

Tuesday, October 2

Homecoming King and Queen Voting

10AM-6PM
MUC Goshen Lounge

Soda Shop

11:30AM-1PM
Peck Hall Lobby

Recliner Races

Noon
Stratton Quadrangle

Livewire: Meg Allison from USA Network's "Nashville Star"

Noon
MUC Goshen Lounge

Cosmic Bowling

7PM-9PM
MUC Cougar Lanes

Wednesday, October 3

New SIUE Cougar Logo Launch

11:15 AM
MUC Goshen Lounge

Cougar Statue Dedication

Noon
MUC North Entrance

Movie: Hairspray

7:00PM
MUC Meridian Ballroom

Thursday, October 4

Cougar Karaoke (80's Style)

Noon
MUC Goshen Lounge

Early Childhood Reunion Reception

4PM-8:30PM
MUC University Club Restaurant

Pep Rally & Bonfire

6:30PM
Woodland Bowl
MUC Goshen Lounge (rain location)

Homecoming Dance - "Dancin' Through the Decades"

Sponsored by Residence Housing Association
9PM-11:30PM
RHA Homecoming Prince & Princess Coronation - 11PM
MUC Meridian Ballroom

Friday, October 5

6th Annual Chili Cook-Off Sponsored by SIUE Club Sports

5:30PM-7:30PM
Korte Stadium
Winner to be announced between Women's & Men's Soccer Games

Homecoming Soccer Game vs. University of Missouri-St. Louis

5PM Women's
7:30PM Men's
Korte Stadium Tricycle Races
Sponsored by Residence Housing

Association
Between Men's and
Women's Soccer Games

Homecoming Royalty Coronation

Halftime Men's Soccer Game

Casino Night

9PM
MUC Goshen Lounge &
Meridian Ballroom

Saturday, October 6

Campus Recreation 5K

Poker Run
8:30AM
Student Fitness Center
Cougar Parent & Family Association
Advisory Council Breakfast
9:30 AM
MUC International Room

Big Red Read with Clifford the Big Red Dog

10AM
MUC Goshen Lounge

Family Weekend at the Rock Climbing Wall

10AM-2PM
Student Fitness Center
Homecoming Classic and Custom Car Show
11AM-4PM
Parking Lot B

SIUE Alumni Picnic

Noon
Field West of Morris University Center

"Sh-Boom" Concert

Noon-4PM
Field West of Morris
University Center

Kid's Corner Inflatables

Noon-4PM
Field West of Morris University Center

Family, Friends, and Fun Bowling Tournament

Noon-5PM
MUC Cougar Lanes

Nursing Simulator Lab Tours

1PM-3PM
Alumni Hall, Second Floor

Student Affairs Alumni and Friends Homecoming Hospitality Tent

1:30 PM - 3:00 PM
Recreational Sports Complex

Pom-poms & Popcorn

Sponsored by the Cougar Parent & Family Association
2PM - 3PM
Recreational Sports Complex

InterVarsity Christian Fellowship Alumni, Friends, & Family Ice Cream Social

2PM-4PM
Religious Center

SIUE Club Football vs. Marquette University

3PM
Recreational Sports Complex

University Housing

Trivia Contest
3PM-6PM
MUC Conference Center

Athletics Hall of Fame Banquet

6:30PM
Vadalabene Center Gymnasium

Club Showcase

Frederick Winters- Hypnotist/
IMPULSE - A Capella Group
8PM
MUC Meridian Ballroom

Sunday, October 7

Chancellor's Literary Society Closing Ceremony

10:30 AM
MUC Mississippi/Illinois Room

Sunday Brunch

11AM-1:30PM
MUC Restaurant

SIUE Soccer vs. UM Rolla

Womens' - Noon
Men's - 2:30PM
Korte Stadium

For more information contact the Kimmel Leadership Center at (618) 650-2686.

50 SIUE
1957-2007

Michigan punishes Northwestern in second half

by Mark Snyder
Detroit Free Press (MCT)

EVANSTON, Ill. — C.J. Bacher was screaming.

After Michigan hit him again and again, the Northwestern quarterback was in a staggering stupor at the end of Saturday's 28-16 loss to the Wolverines at Ryan Field.

"He's a good quarterback and has a great future ahead of him, but we just kept hitting him and kept getting to him," Michigan defensive end Tim Jamsion said. "It probably did take a toll on him, all the hits. I heard him screaming one play after (Shawn) Crable got him. I heard him screaming when he got him on the ground. So I think it took a toll on him."

The pain provided the soundtrack for Michigan's second-half surge and defense-defined victory.

After a first half during which Northwestern marched over U-M for more than 300 yards and scored points on four of seven possessions in taking a 16-7 lead, it was hard to imagine things changing.

It was a flat first half, according to U-M defensive tackle Terrance Taylor, the kind that wasn't "Michigan football." The bigger fear, though, was that it actually was Michigan football.

But then the Wolverines entered the locker room, and everything changed.

"It was intense, people were ready to go, ready to hit and put the first half behind us — ready to move on," Taylor said. "It's all about momentum."

When the fourth quarter began with the Wolverines still trailing, 16-14, the defense realized any slip could cost U-M the game. So they made their own breaks.

On Northwestern's first possession, U-M defensive end Brandon Graham came around the end and slapped the ball out of Bacher's hand, allowing Crable to pounce on it.

Three offensive plays later, U-M had seven points and, with 9:53 remaining, a lead for the first time since the first quarter.

MICHIGAN/pg.14



Julian H. Gonzalez/Detroit Free Press/MCT
Michigan quarterback Ryan Mallett eludes the grasp of Northwestern's Corey Wootton in the second quarter in Evanston, Illinois, on Saturday, September 29, 2007.

SIUE CLUB SPORTS Study hard. Play hard.



The new SIUE Club Sports logo will be unveiled.
Be the first to buy merchandise sporting the NEW logo!

SIUE Club Football vs. Marquette University
Saturday, October 6, 3:00 p.m.
Rec Plex Field

Celebrate SIUE Homecoming.

Join us for student organization tailgating prior to the game!

www.siue.edu/crec 650.2348

SOUTHERN ILLINOIS UNIVERSITY
EDWARDSVILLE

SIUE
Campus Recreation

SOUTHERN ILLINOIS UNIVERSITY
EDWARDSVILLE

SIUE
CAMPUS RECREATION

618-650-BFIT
www.siue.edu/crec

SIUE Home Coming 2007

3 CATEGORIES
EACH WINNER
GETS A TROPHY
AND
\$100 PRIZE!

COST: \$20 PER ENTRY
\$2 FOR TASTING
(STUDENTS AND CHILDREN UNDER 10)
\$3 FOR GENERAL PUBLIC

Club Football ← Homecoming game

October 6th at the
Rec Plex 3:00 pm
FREE!!!

For more info
call 650-3245



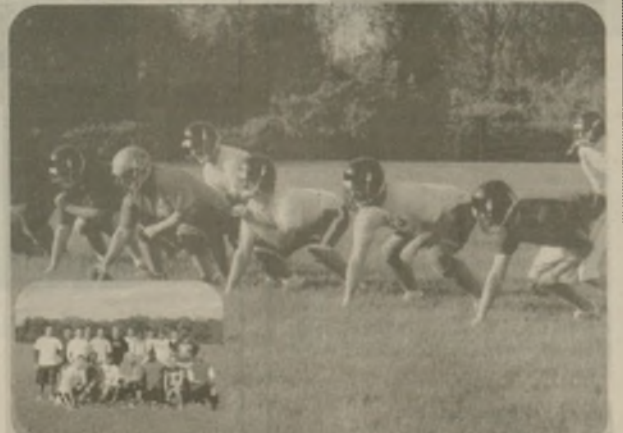
5k Poker Run

October 6th, SFC at 8:00 AM

Cost: FREE!

Registration required for runners

For more information, please call 650-3245



WOMENS SOCCER

from pg. 12

SIUE was able to score first on the third goal of the season for Elizabeth Valenti that came unassisted.

"She just understands the game so well and as a leader is able to keep everybody positive," Yearian said.

Bellarmino was able to respond in the 36th minute on a goal from Alissa Reuther on an assist from Bridget Barden.

The Cougars were able to regain the lead for good in the 65th on Roark's third goal of the season, which came unassisted.

Backs manned the goal for SIUE the entire game and recorded five saves on the 12 shots by Bellarmino.

The victories moved SIUE to an overall record of 7-3-1 and 6-2-0 in the Great Lakes Valley Conference.

SIUE will next play Friday at home against the University of Missouri-St. Louis and Sunday against the University of Missouri-Rolla.

Kyle Wiese can be reached at kwiese@alestlelive.com or 650-3524.

MICHIGAN

from pg. 13

Given a cushion and knowing the Wildcats would try to pass, U-M defensive coordinator Ron English let his pass rushers loose. On the ensuing drive, Brandon Harrison's safety blitz popped the ball into Jamison's hands for an interception.

The next drive ended in a pick for linebacker Obi Ezech. Finally, with Northwestern down to its last chance with less than four minutes remaining, Taylor grabbed a fumble completing the magical run.

Four series, four turnovers and a dominant finish.

"It was weird," said Crable, who rung up another star performance with 10 tackles (five for loss), one forced fumble, a fumble recovery and a sack. "We went out there and it was, 'We've got to stop them,' and we got a turnover. (Then) 'We've got to stop them,' and we got a turnover. It was kind of weird. Then the offense was moving the ball and we're like, 'We got 'em.' "

The overall numbers weren't pretty, and, against a team that capitalized on early mistakes (ahem, Oregon), the game could have been put out of reach early.

But this was not an elite offense Michigan faced.

"In the second half, the interceptions and things like that were people being where they were supposed to be," Crable said. "Our defense found a way to finish strong."

(c) 2007, Detroit Free Press. Distributed by McClatchy-Tribune Information Services.

**Sri Sathya Sai Baba Center
of Southern Illinois
at SIUE**

Religious Center
Every Thursday 7:45-9:30 PM
"People of all Faiths are Welcome."

Program
/ Study Circle
/ Devotional Singing
/ Service Projects
(Saturdays & Sundays)

For Further
Information, Contact:
Dr. T.K. Parthasarathy
618.650.3676
or
618.288.2894



**Over the river and
through the woods
to the trauma
center we go.**



All-terrain vehicles can go 60 mph and weigh 600 pounds. Yet, many owners think of them as just big toys. Consider the facts: 136,000 ATV-related injuries were treated in hospitals and doctors' offices in 2004. Accidents happen when ATVs are operated in the wrong place, under the wrong conditions, by people too young or too inexperienced in ATV safety measures. If you must ride an ATV, use your head — the right way. A public service message from the American Academy of Orthopaedic Surgeons and the Orthopaedic Trauma Association.

For recommendations
on ATV safety, visit
orthoinfo.org and ota.org.

AAOS
AMERICAN ACADEMY OF
ORTHOPAEDIC SURGEONS

OTA
ORTHOPAEDIC TRAUMA ASSOCIATION

*You are invited to the
Cougar Statue
Dedication*



**Wednesday
October 3, 12:00 Noon
Main Entrance,
Morris University Center**

The first 250 SIUE students to arrive will receive
a coupon for a free cougar statue dedication
T-shirt at the end of the ceremony.

SH
Student
GOVERNMENT
Southern Illinois University Edwardsville

SIUE
50
1957-2007

THE Daily Crossword

Edited by Wayne Robert Williams

ACROSS

1

Dunking maneuver

5

Matinee idol

9

Find repugnant

14

Drinking mug with a face

15

Comfort

16

Tenancy period

17

PC operator

18

Downfall

19

Favorite at the ball

20

Ridiculed, perhaps

23

Aardvark's snack

24

Annapolis grad

25

Have a lofty goal

29

Like dirty hearths

31

Poisonous snake

34

Place to get steamed

35

Urgent request

36

Chinese gooseberry

37

Reverse the fortunes of

40

Chills, as champagne

41

Vocalized

42

Arctic shelter

43

Grain in a Salingier title

44

Plaintiff

45

AWOL part

46

Raises, as stakes

47

Exist

48

Have one's revenge

57

Play the ham

58

Kitty stake

59

Half a sextet

60

Metric volume

61

Swerve off

62

Grimm baddie

63

Keep for later

64

Out of kilter

65

Canasta display

31

Theater passageway

32

Have a fainting spell

33

Grape used for burgundies

35

Pierre's pop

36

Beer containers

38

Dwelling

39

Slander in print

44

Domain

45

Corpuscle carrier

46

Downright

47

Fail bloom

48

Solidifies

49

Send off

50

Dorothy's dog

51

Molten flow

52

From the top

53

Minute particle

54

Hankering

55

Young miss

56

Did field work

DOWN

1

Ticket piece

2

Give the slip to

3

Cover for a crook

4

"Breckinridge"

5

Cool and calm

6

Mocking reproach

7

Not likely!

8

Nevada city

9

Capital on the Hudson

10

Complaints

11

Sign of saintliness

12

Christiania, now

13

Stagger

21

Gold measure

22

Ford Clinic, e.g.

25

On the move

26

Impertinent

27

Liquefy

28

Rustic lodgings

29

Worship spot

30

Make watertight

SUDOKU

By Michael Mephram

| | | | | | | | | |
|---|---|---|---|---|---|---|---|---|
| 4 | | 3 | | 5 | | 2 | | |
| 8 | 5 | | | | | | 4 | 1 |
| 6 | | | | | | | | 8 |
| | | | | 1 | 6 | 2 | | |
| | | | | | 4 | | | |
| | | | | 9 | 7 | 3 | | |
| 7 | | | | | | | | 5 |
| 2 | 9 | | | | | | 1 | 6 |
| | | | 6 | | 3 | | 8 | 2 |

Complete the grid so each row, column and 3-by-3 box (in bold borders) contains every digit 1 to 9. For strategies on how to solve Sudoku, visit www.sudoku.org.uk.

(c) 2006 Michael Mephram. Distributed by Tribune Media Services. All rights reserved.

Now on Mobile! Key in 783658.com on your cell's Web browser for details. Charges will apply.

Thursday's Answers

THE Daily Crossword

Edited by Wayne Robert Williams

| | | |
|-----------|---------|-----------|
| LOSE | IDEAL | PLAY |
| AVIS | NORSE | RENE |
| HAPPINESS | SNEAKS | |
| RLS | SIREN | APPLE |
| | SSN | STASES |
| THROUGH | HADOOR | |
| SAONE | ELUL | ENDS |
| ANA | STRIPES | OAT |
| RANG | ROBE | ETUDE |
| | YOU | DIDNTKNOW |
| CURRIE | | OOO |
| ONEAL | BANTU | ABS |
| THAT | YOU | LEFTOPEN |
| TIDE | DRAMA | ESAI |
| APES | ERROR | ROMP |

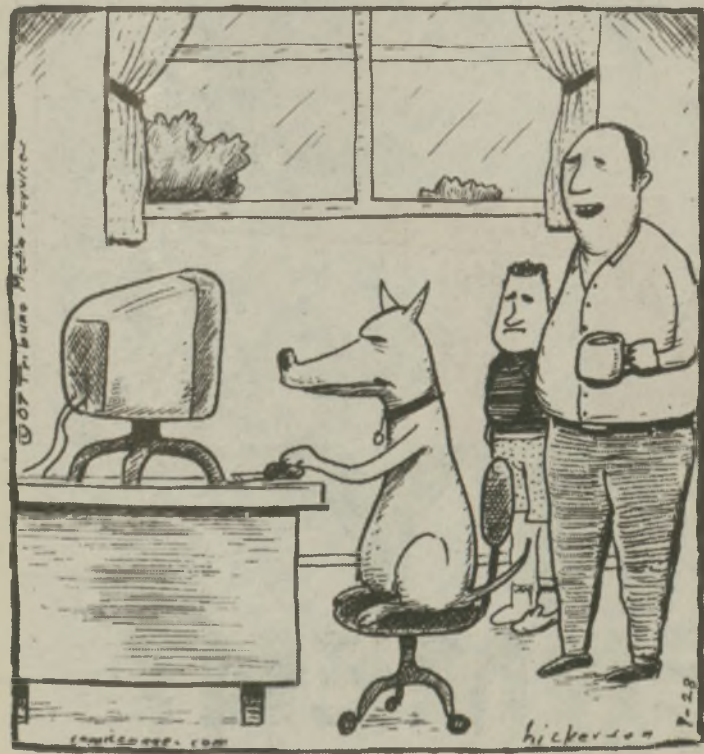
SUDOKU

By Michael Mephram

| | | | | | | | | |
|---|---|---|---|---|---|---|---|---|
| 4 | 1 | 9 | 3 | 5 | 6 | 8 | 7 | 2 |
| 7 | 8 | 5 | 2 | 9 | 4 | 6 | 3 | 1 |
| 6 | 3 | 2 | 7 | 1 | 8 | 4 | 9 | 5 |
| 9 | 2 | 3 | 5 | 8 | 1 | 7 | 4 | 6 |
| 5 | 6 | 1 | 4 | 3 | 7 | 2 | 8 | 9 |
| 8 | 7 | 4 | 9 | 6 | 2 | 5 | 1 | 3 |
| 2 | 4 | 6 | 1 | 7 | 3 | 9 | 5 | 8 |
| 3 | 5 | 7 | 8 | 2 | 9 | 1 | 6 | 4 |
| 1 | 9 | 8 | 6 | 4 | 5 | 3 | 2 | 7 |

Girls & Sports

By:Andrew Feinstein



"Check out Skippy's new trick, son. I taught him how to retrieve a file."



Morris University Center

Customer Service Week

Oct 1- Oct 5, 2007

Rgerzation Center

COSMIC BOWL every Wednesday 8-10 pm \$15.00 per lane includes:

• 2 hours of bowling

• Free shoe rental

• Medium pizza from Pizza Hut

Print & Design

10% OFF Banner Orders

Bookstore

25% Off Dummies Books

50% OFF merchandise which reads SIUE

50th Anniversary Special \$50 off any Apple Computer

(Offers available with October Coupons)

Dining Services

October 1-- Garden Patch -- October Salad Special- Offering a different salad every week

October 3 -- Center Court-- Entrees -- County Fair ! (Special menu 5-8 pm)

October 4 -- Center Court-- Grille Area Special

Daily Drawings

Grand Prize:

Starbucks Baskets

(Sign up at Center Court, University Bookstore, Print&Design, Cougar Lounge, and University Restaurant)

Classifieds

16

www.alestlelive.com

Tuesday, October 2, 2007

FOR RENT

WANTED, RENT A ROOM, 3 BEDROOM house, 2 1/2 minutes from SIUE. \$350 per/ mo Includes utilities, furniture, and W/ D. No pets or smokers. 21yrs. or older. Male or Female. 618-741-0690 or 618-541-8391

RENTAL IN HIGHLAND One bed., one bath, apt. Includes storage unit & 24/7 e-maint. Has laundry facility on site. \$415./ month + dep. Frey Properties 618-654-3467

LIVE RENT FREE WHILE FINISHING SCHOOL. BUY ONE OF MY 3-BR HOMES (15 MINUTES FROM CAMPUS) FOR NOTHING DOWN AND PAYMENTS (PRINCIPAL & INTEREST) OF UNDER \$500.00 PER MONTH. RENT OUT THE OTHER TWO BEDROOMS FOR \$400.00 PER MONTH EACH. FOUR YEARS FROM NOW SELL FOR A PROJECTED PROFIT OF \$10,000.00. CALL 866.809.9074 ANYTIME 24/7 FOR A RECORDED MESSAGE

ROOM FOR RENT, IN 4BR 2BT hosue in Edwardsville, Master Suite with attached bath rent's for \$490.00/ month the rest of the BR's rents for \$390.00/ month. Utilities will be divided into 4 equal shares. 618-307-4876

CAMPUS LIFE DRIVING YOU CRAZY? Lock in your housing for next semester now! Take advantage of our Advance Rental Program on great 2 and 3-bed townhomes close to campus. Free cable TV. (618) 692-9310 rentchp.com 692-9310

MALE ROOOMATES WANTED \$150.00 ALSO: Three bedroom House \$475.00 (618) 444-2267

1 BEDROOM APT. FOR RENT in Woodriver. \$375.00/ month. 10 min from SIUE. All utilities paid except electric. 307-4876

2BR, 1.5 BA. TOWNHOUSE I-255/ Horseshoe Lake Rd. area 15 mins. to Saint Louis and SIUE. Includes w/ d and some utilities. No pets non-smokers only \$590/ month. (618)344-2125.

FOR SALE

USED BOOKS AT BARGAIN PRICES Good Buy Bookshop, Lovejoy Library Room 0012, Wednesdays and Thursdays 11 a.m. to 2 p.m.. Sponsored by Friends of Lovejoy Library

GREAT CONDITION USED FURNITURE Green Sofa \$200 2 Oversized chairs with ottoman, \$200 each. 19 inch tv with stand \$25 call for email pics, free delivery to Edwardsville 618-407-8455

#1 CAR SALES IN TROY ILLINOIS is pleased to announce our new college student First Time buyers program. No credit turndowns EVER! Visit us online at www.1CarSales.com or call 618-667-2277. Bring this ad in for free 3 month warranty. Located 10 mins. away from campus at 616 Edwardsville Rd.

HELP WANTED

MALE TO DO YARD WORK. GIRL TO help with housework. 618-656-9589

SITTERS WANTED. AVERAGE \$10 per hour. Register free for jobs near campus or home. www.student-sitters.com

MUC PERFORMERS NEEDED. FOR additional information, call (618) 650-5368.

OPPORTUNITY TO MAKE MONEY Established Marketing firm located 10 minutes from SIUE campus looking to fill a fast paced intern/ sales position. Must be highly motivated. Must have good phone/ people skills. THIS IS A SALES POSITION. Please call (618) 593-3020 or send resume to swingbucks@aol.com. Hours of Business Mon-Fri 8am-5pm. Welcome Back SIUE Students

COFFEE BAR IN TROY, IL needs part-time help Mon., Thurs. and Sat. Experienced preferred but not necessary. Please call 709-2963

YMCA POSITIONS School Age Child Care Site Director, Daytime Lifeguards,

Water Aerobic Instructors, and Swim Instructors. Part time help needed to work in a fun, active environment. Site Director position will be 30 hours per week while school is in session. Person will assist the program director in program planning and staff training needs, collecting payments and keeping accurate records. Applications taken at the: CMT YMCA #1 Town Center Maryville, IL 62062 or email resume to lkerfoot@ymcaswil.org. Or call 346-5600

WINDOW TINTER Detail Shop is looking for experienced window tinter. Apply in person @ 813 N. Main St. Edwardsville, IL

RELIABLE DRIVER NEEDED to take 14 year old boy for soccer practice and other extra curricular activities around

Edwardsville. References Required. (618)288-2894.

MUST LOVE ANIMALS! LaBest Inc is looking for a bather during morning hours. Please apply in person. 4933 Indian Hills Dr. Edwardsville IL62025 692-6399

LEISURE WORLD HEALTH CLUB in Collinsville. Front desk position opening. Call Mark for details 344-3095. Call between 8:30 - 11:30 am or 4:30 - 6:30 pm

MISCELLANEOUS

Spring Break 2008. Sell Trips, Earn Cash and Go Free. Call for group discounts. Best Deals Guaranteed! Best Parties! Jamaica,

Cancun, Acapulco, Bahamas, S. Padre, Florida. Information/ Reservations 1-800-648-4849 or www.ststravel.com

****#1 SPRING BREAK WEBSITE! 4 & 7 night trips to BahamaPartyCruise, PanamaCity, Acapulco, Cancun and more.** Low prices guaranteed. Group discounts for 8+. Book 20 people, get 3 freetrips! Campus reps needed. [www. StudentCity.com](http://www.StudentCity.com) or 800-293-1445

BITE YOUR NAILS? Know someone who does? We can help! It really works! Guaranteed! Its time to quit. Are you ready? Prevent the bite, stop the habit. www.nailbitesstopper.com

NEED STATS TUTOR \$20/HR MSW

student needs statistics tutor... Can you spare 1 or 2 hours per week ? I need your help ASAP. Call Janell at 618-514-3915

ROOMMATE WANTED

SHARE A HOUSE You'd get 2 bedrooms and 1 bath, off the street parking, plus use of a full kitchen, washer/ dryer, full gym, hot tub, internet and full cable. 15 minutes from SIUE. \$400 and half utilities. Call Jess at 314.267.6052



I WANT CLARITY ENLIGHTENMENT AND TO GET FROM HERE TO THERE. LITERALLY.

Introducing an enlightening new idea: **Your Navigator** from U.S. Cellular®. It's a GPS system with a local search function built right into your phone. With voice-guided, turn-by-turn directions, clarity and direction are just a call or a visit away.

U.S. Cellular is wireless where **you** matter most.™

U.S. Cellular

getusc.com 1-888-BUY-USCC

Application and usage charges apply. ©2007 U.S. Cellular Corporation.