

Index

News	1-3
Opinion	4
Lifestyles	5
Sports	6
Puzzles	7
Classifieds	8

The Alestle

Alton - East St. Louis - Edwardsville

'High School Musical' takes on college stage
See Lifestyles



Wednesday, July 18, 2007

www.thealestle.com

Vol. 59, No. 68

Rock damaged in weekend attack

by Megan McClure
Alestle Editor in Chief

The Rock on the Stratton Quadrangle, a common target of "vandalism" by students and groups, sustained structural damage during a weekend attack.

"It appeared it had been hit with a sledgehammer," SIUE Police Lt. Kevin Schmoll said.

The south side of the Rock incurred mostly surface damage, while the north side – facing Lovejoy Library – suffered major damage.

According to Schmoll, a university employee, who spotted the damage while walking from the bus stop at Hairpin Drive through the Stratton Quadrangle, reported the incident at 7:35 a.m. Monday.

A representative of the SIUE Police

Department contacted Facilities Management to have debris removed from the area. Schmoll reported that no suspects have been named.

The Rock – formerly known as "Anxiety Rock" – is frequently painted by students and organizations. According to Vice Chancellor for Student Affairs Narbeth Emmanuel, students disagreeing with messages on the Rock often simply paint over them.

"It's beyond me why someone would want to do that," Emmanuel said.

The tradition of painting the Rock began in the 1968. The original Rock, made of rose quartz dating back to the construction of the campus, was broken into small pieces by a student in the summer of 2001. The student was arrested and charged with criminal damage to property. The largest remaining



photo by Steve Berry/Alestle

The Rock on the Stratton Quadrangle incurred damage after being struck with a sledgehammer or other similar object.

ROCK/pg.3

Policy changes have
faculty and staff wondering:
who's on trash duty?

Trouble with Trash

by Megan McClure
Alestle Editor in Chief

A debate surrounding garbage removal in faculty offices has left many faculty and staff members asking a common household question – who takes out the trash?

According to a statement from Vice Chancellor for Administration Kenn Neher, the policy was originally changed to require faculty and staff to empty their own trash receptacles, though building service workers would empty recycling bins weekly.

"This was the opposite of the past practice, where the building service workers took the trash while faculty and staff took the recyclables," Neher's statement said.

Many faculty members conveyed disapproval of the original change.

"The faculty, in general, does not like this new policy," biological sciences professor Ralph Axtell said.

After the change became an issue of contention on the faculty listserv, administrators decided to alter the plan. The amended plan calls for building service workers to alternate between trashcans and recycling bins.

According to Neher's statement, "The intent of the new policy was to comply with state law by increasing the amount of trash that is recycled on campus; to promote awareness of and participation in recycling ... and to devote more custodial service to the recycling efforts on campus."

"I think what they're doing, essentially, is putting much more work that is custodial on the faculty, rather than less," Axtell said.

Other universities' trash removal systems follow various methods.

"All our BSWs (Building Service Workers) empty trash as needed, usually daily," explained Travis Magee, Building Services Supervisor at Eastern Illinois University.

Magee explained that, like with SIUE's former policy, faculty and staff at EIU are instructed to empty recyclables into larger bins located in hallways.

Southern Illinois University Carbondale's Building Services Web site states that trash receptacles are emptied regularly as part of the custodial routine.

"Building Services' philosophy in cleaning office space is that it needs to be

TRASH/pg.3

Laptop, projector reported missing in Dunham

by Megan McClure
Alestle Editor in Chief

Two equipment thefts were reported in Dunham Hall Thursday.

"It seems as though someone is making the rounds in Dunham Hall," Mass Communications Department Chair Patrick Murphy said, "and certainly that's distressing."

At 9:06 a.m., an employee of the Music Department reported a portable projector missing. The projector, a Sharp model 3000 valued at \$5000, was last seen July 5.

Additionally, a student's silver Toshiba tablet PC laptop, charger and paper scanner were reported missing at 2:35 p.m. Thursday from Dunham Hall, Room 1015. According to SIUE Police Lt. Kevin Schmoll, the mass communications class meeting at that time had left the room for a 15-minute break when the incident occurred.

"We talked to all the people in the class and they didn't have any leads for us," Schmoll said.

The computer and charger are valued at \$1600, while the scanner is valued at \$100.

No suspects have been listed.

"The intent was to ... devote more custodial service to the recycling efforts on campus."

-statement from Kenn Neher,
vice chancellor for administration

"The faculty, in general,
does not like this new policy."

-Ralph Axtell
biological sciences professor

Megan McClure can be reached at
alestlenews@gmail.com or 650-3527.

Police Reports

7-10

Police took a call-in report of a data projector missing from a Dunham Hall classroom.

Police took a report of an unauthorized subject attempting to cash checks through a closed account.

7-11

Warrants for Lameshia Sullivan were cancelled after she was picked up by the Bond County Sheriff's Office.

Police issued Elizabeth Austin a citation for the operation of an uninsured motor vehicle on North University Drive.

7-12

Police took a report of a stolen laptop at Dunham Hall.

7-13

Police took a call reporting a bicycle left unattended in the oval in front of Hairpin Drive. The bicycle matched the description of a bicycle reported stolen from Edwardsville High School July 12. The caller brought the bicycle to the station.

Police issued Gary Cline a citation for speeding on South University Drive.

Police arrested Ashley Stewart for driving with a suspended driver's license on East University Drive. Police issued Stewart citations for driving on a suspended drivers license, the operation of an uninsured motor vehicle and driving with one headlight out.

7-14

Police issued Rodger Renault a citation for the operation of an uninsured motor vehicle on Stadium Drive.

Police issued Morgan Goodall a citation for the operation of an uninsured motor vehicle on South University Drive.

7-15

Police issued Christopher Gibbs a citation for driving without a valid drivers license on South University Drive.

Police issued Christopher Wilson a citation for speeding and the operation of an uninsured motor vehicle on South University Drive.



photo by Steve Berry/Alestle

Student Government adviser Steve Sperotto addresses the Student Senate during Friday's meeting. The senate voted to table discussion regarding the allotment of funds during and immediately before finals.

Exam-week funds tabled

by Holly Meyer
Alestle Managing Editor

The Student Senate tabled a resolution to eliminate program funding during the week of and prior to final exams in the fall and spring semesters at Friday's meeting.

Senator Darrell Lillard moved to table the resolution until the next meeting when all 12 senators will be in attendance.

Lillard said that since this decision would affect a large part

of the SIUE population it was important to have all 12 senators voice their opinions so students were well represented.

"We do need to get the other six senators to make the decision," Lillard said.

The 12 student senators represent the 13,000 students, with only six senators at Friday's meeting, the senators represent double the number of students they would if all senators were present, Lillard said.

Sponsored by Senator

William Krause, the resolution makes an exception for academic programs, but the Student Senate would decide whether a program is academic or not.

"As Student Government, we should promote academic well-being on campus," Krause said.

Krause said if passed, the resolution would allow for the campus to be quieter during finals and allow people to become more centered on their academics.

SENATE/pg.3

Hollywood ★ Tan

**One Month
\$25.00**

Located next to Denny's in front of Wal-Mart
www.hollywoodtanco.com

656-8266

Customer Appreciation Day!

\$5.99

Large One-Topping
(carry-out only)
July 21st & July 22nd
(618) 659-7272

PAPA JOHN'S
Better Ingredients.
Better Pizza.

SIUE Newspaper
The Alestle
available online 24/7
thealestle.com

**EVERY
THURSDAY NIGHT**
\$2.00
Pitchers
and Calendar
Girl "Search"
Shenanigans

Trustees approve 10-year, \$20 million food contract

by **Matthew Schroyer**
Alestle Lifestyles Editor

Southern Illinois University Board of Trustees approved a ten-year, \$20 million contract to purchase food products from U.S. Food Service at Thursday's board meeting.

SIU will purchase approximately \$2 million each year in food items, as well as items used in food preparation and service for SIUE Dining Services.

Also approved at the meeting was a measure rejecting current bids for a SIUE School of Dental Medicine project. The

project was initially budgeted \$900,000 to expand the dispensing and sterilization facility. The measure increases the budget of the project to \$1.25 million.

The BOT hopes to reduce the expense of the project by approaching bidders in the "less busy" construction season."

The renovation will be funded with SDM Clinic operation funds, SDM facility and equipment use fees and donated funds.

Matthew Schroyer can be reached at alestlenews@gmail.com or 650-3527.

ROCK from pg. 1

portion was stolen Oct. 7, 2002, from the Stratton Quadrangle and recovered 10 days later on Stadium Road. The surviving piece of the original Rock is now displayed in a case in the Morris University Center.

The current Rock was installed in March 2003. A group of students selected the four-ton piece of limestone, which was donated by Unimin Corporation's Pevely, Mo., quarry. George Green, the company's regional general manager, was an SIUE student in the 1970s and organized the donation after speaking with his

son, Christopher, who was a student at the time.

Though the majority of the Rock remains intact, its fate is unclear.

"I don't think we're going to be able to repair it," Emmanuel said.

Emmanuel requested that any students with ideas of what to do with the Rock contact his office.

"We're going to explore the different options," he said.

Megan McClure can be reached at alestlenews@gmail.com or 650-3527.

TRASH from pg. 1

done with the same care one would expect to have their home cleaned," the Web site said.

According to University Director of Marketing and Communications Greg Conroy, Neher's statement was the university's only official response

SENATE from pg. 2

A similar resolution was defeated last year by the Student Senate, according to Student Body President Laurie Estilette.

Estilette, a supporter of the resolution, said the previous resolution did not contain the exception of academic programs.

Art therapy graduate student Kendra Washington was appointed to the Student Legal Services Advisory Board and junior speech communications major Justin Montgomery was appointed to the Tuition and Fees committee. Montgomery served as chair of the Tuition and Fees committee for the 2006-07 school year during his term as a student senator.

The senate approved a travel request of \$425 for Delta Sigma Pi.

The Student Senate

approved part of a program request for the Sculptors at Wagner for \$1353. The senate tabled to the next meeting the artist and speaker fees totaling \$4,692 until the organization decides who the band and guest speaker will be.

A budget request for the Edwardsville Block Party was approved for \$1,220. This makes the senate a cosponsor of the event. The money will pay for two Alestle advertisements and two shuttle buses between SIUE and downtown Edwardsville.

The next Student Senate meeting is at 2 p.m. Friday, Aug. 24, in the Morris University Center's Goshen Lounge.

Holly Meyer can be reached at alestlenews@gmail.com or 650-3527.

SOUTHERN ILLINOIS UNIVERSITY EDWARDSVILLE Summer Showbiz Season 2007

SIUE students get a free ticket with valid ID thanks to CAB.

Disney's

HIGH SCHOOL MUSICAL



Get your tickets NOW!

July 12-14 & July 19-21 at 7:30 PM

July 15* & 22 at 2 PM

Tickets \$12-\$15 are on sale now!

***Special event July 15! \$5**

High School Musical Sing Along and Photo Op after matinee will require an additional ticket.

**Dunham Hall
Theater Box Office
618-650-2774**



Cougar Lanes

Summer 07 Special Events

TUESDAY

6p-10p Red Head Pin Special

WEDNESDAY

8p-9:45p Cosmic Bowling

For more information call: **Cougar Lanes 618-650-5263**

**BANDS AND SOLO MUSICIANS
are invited to perform**

Goshen
Showcase



LATE NIGHT EXPRESSO

CONTACT KPENUMA@SIUE.EDU OR CALL 650-5368

The Alestle
Alton - East St. Louis - Edwardsville

Megan McClure
Editor in Chief

Holly Meyer
Managing Editor

Justin Gibson
Opinion Editor

Matthew Schroyer
Lifestyles Editor

Anthony Patrico
Sports Editor

Steve Berry
Photo Editor

Darlene Wyatt
Chief Copy Editor

Andrea Hicks
Advertising Manager

Molly Maurer
Graphics/Production

Lance Speere
Adviser

Mike Genovese
Graphics Supervisor

Aria Capel
Graduate Assistant

Debbie Roberts
Office Manager

Hanli Li
Satish Madipotti
Jessica Wallace
Office Secretaries

Letters to the Editor Policy:

The editors, staff and publishers of the Alestle believe in the free exchange of ideas, concerns and opinions and will publish as many letters as possible.

Letters may be turned in at the Alestle office located in the Morris University Center, Room 2022 or via e-mail at alestle@gmail.com.

All hard copy letters should be typed and double-spaced. Letters should be no longer than 500 words.

Please include phone number, signature, class rank and major.

We reserve the right to edit letters for grammar and content. However, care will be taken to ensure that the letter's message is not lost or altered.

Letters to the editor will not be printed anonymously except under extreme circumstances.

We reserve the right to reject letters.

About the Alestle:

One copy of the Alestle is no charge. Additional copies cost 25 cents.

The Alestle is a member of the Illinois College Press Association, the Associated Collegiate Press and U-WIRE.

The name Alestle is an acronym derived from the names of the three campus locations of Southern Illinois University Edwardsville: Alton, East St. Louis and Edwardsville.

The Alestle is published on Tuesdays and Thursdays during fall and spring semesters and on Wednesdays during summer semesters. For more information, call 650-3528.

Have a comment? Let us know!

Send us an e-mail:
alestleeditor@gmail.com
The Alestle
Campus Box 1167
Edwardsville, Ill. 62026-1167



The Alestle is seeking guest columnists and cartoonists to help contribute to the newspaper

Contact
Opinion Editor
Justin Gibson at
alestle@gmail.com

Protect our media from government interference

I don't normally listen to talk radio. To me, the radio is for music, not for listening to a bunch of old, conservative men talk about politics or sports.

Lately, however, there's been a controversial uprising over the Fairness Doctrine.

Ever heard of the Fairness Doctrine? I hadn't. But after hearing about it in snippets on the radio and television for weeks, I finally gave in and researched it.

Apparently my history classes in high school failed me, because the Fairness Doctrine is not new.

It actually came out in the late 40s as a regulation of the Federal Communications Commission that required broadcast licensees to present controversial issues of public

importance in an honest and balanced manner.

The Fairness Doctrine was eventually abolished in 1987, as it was deemed unconstitutional.

Now, several liberal politicians like John Kerry, Dick Durbin and Dennis Kucinich are loudly demanding its resurrection.

At first glance, this Fairness Doctrine thing looked pretty good to me. It seemed like a good idea to have radio stations present both sides to political issues and such.

However, here's the problem: the Fairness Doctrine basically takes airtime normally devoted to conservative conversation and cuts it in half to provide for liberal views.

Radio is a business, and like any other business, their main concern is understandably money. Conservative talk sells well, liberal talk doesn't.

People have never accused me of being conservative, but that doesn't keep me from seeing

the unfairness of the Fairness Doctrine.

It isn't fair to cause radio stations to lose money in some liberal power trip. Besides, free discussion and debate can never truly occur when restricted by regulations.

Fortunately, the House of Representatives voted 309-115 at the end of June against allowing the FCC to reinstate the regulation.

However, free media is not yet in the clear. The fact that something as detrimental to free media as the Fairness Doctrine was brought up in the first place does not bode well, but now there's even more to worry about.

The left has been very active in promoting a number of subtler "reforms" meant to alter what broadcasters do and say, according to James L. Gattuso, a researcher in regulatory policy at a conservative research and educational institution known as Heritage Foundation.

For instance, many conservative commentators mistakenly assumed the report entitled "The Structural Imbalance of Talk Radio" endorsed the Fairness Doctrine when the authors actually dismissed the doctrine as "ineffective."

Instead, they propose an alternative agenda, including: limiting how many radio stations a firm can own, shortened broadcast license terms, requiring radio broadcasters to regularly show they are operating in the "public interest" and imposing a fee on broadcasters who fail to meet these "public interest obligations."

Free speech and free markets enjoyed a great victory last week in the defeat of the Fairness Doctrine. But the real fight to protect the media from government interference is just beginning.

Maggie Willis can be reached at alestle@gmail.com or 650-3527.



Maggie Willis

If you want a reason to vote then look here

A struggle of monumental, perhaps even elephantine proportions is gripping the state capitol. Lawmakers are nearly exchanging blows on how to spend the state's tax money, and how to get more of it.

OK, maybe it's just business as usual for Illinois politics; a dark alley where the American dream has met a grizzly demise on more than one occasion.

Let's examine the crime scene.

At center is Gov. Rod Blagojevich and House Speaker Michael Madigan, both Chicago Democrats.

In short, Blagojevich, along with Senate President Emil Jones

(also from Chicago) have a plan to increase spending on education and establish healthcare for every Illinoian. To pay for it, they intend to expand gambling and business taxes, bringing in \$5 billion.

Nay, says Madigan.

Madigan wants to end some tax breaks for businesses and bring in \$1 billion.

Neither side wants to meet in the middle. To get their points across, each side has engaged in some fairly childish behavior.

Blagojevich suddenly demanded the Illinois House voted on a limit for the size of a gun clip to create infighting among Democrats. Madigan refused to meet with Blagojevich, but suddenly showed up with a large number of lawmakers at his doorstep. All in the name of making each other look bad to the voting public.

A circus can't run on peanuts

alone. Since July 5, when special budget sessions began, taxpayers have shelled out an estimated \$211,000 a week in Senate operating costs, compared to the typical \$26,000 a week. This, for talks that go nowhere.

Why should John or Jane college student care?

As a state-run university, SIUE gets nearly 58 percent of its financial support from the state. As the Alestle reported July 11, an emergency budget of \$5.2 million was given to the university for the month of July. This paltry sum ensures the university will largely operate as usual for the time being.

It is only a matter of time before the state legislature comes down from its temper tantrum and compromises on a budget. For now, students (along with the remaining 12 million Illinoians) should be up in arms that politicians are playing

chicken, allowing education to suffer collateral damage.

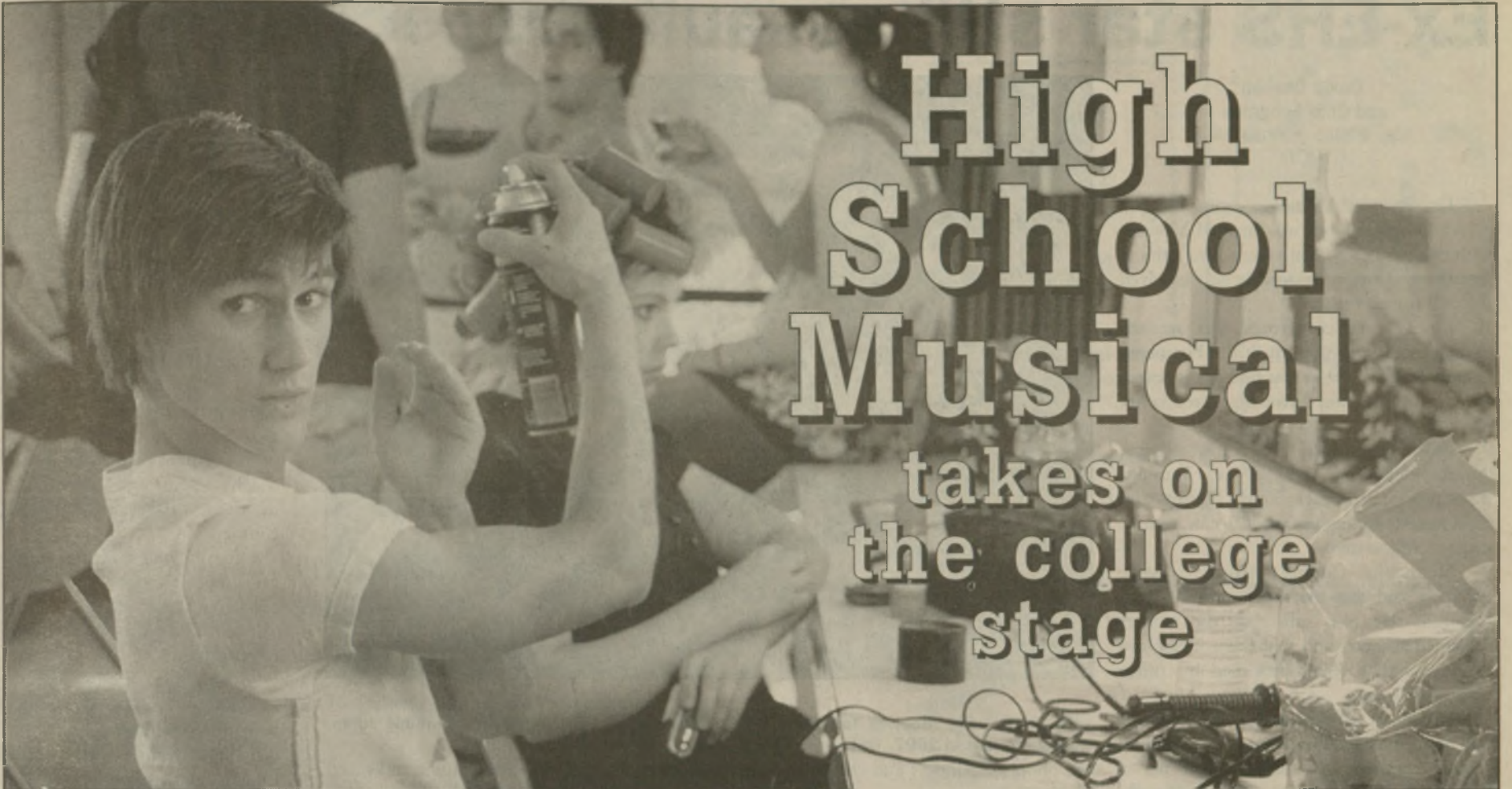
It's unfortunate that students have to suffer the whims of wayward lawmakers, but what should we expect when we don't vote in midterm elections? Only 23 percent of voters aged 18 to 29 stepped up to the polls, according to the Center for Information & Research on Civic Learning & Engagement. For comparison, 59 percent of 18- to 24-year-olds in Illinois voted in the 2004 presidential election.

It's high time that voters, including student voters, take their right to vote seriously and put these clowns in their places. Pay attention, because this is why we vote.

Matthew Schroyer can be reached at alestle@gmail.com or 650-3527.



Matthew Schroyer



Steve Berry/Alestle

Recent Edwardsville High School grad Brandon Raab, styles his hair before going on stage in Dunham Hall as "High School Musical's" Troy. Summer Showbiz presents the last run of this production at 7:30 p.m. Thursday, July 19, through Sunday, July 22.

by Angie Thomas

Alestle News Reporter

Pop culture juggernaut "High School Musical" has made its way to SIUE as the latest Summer Showbiz 2007 production. The play, which was adapted from the 2006 Disney movie, has raked in thousands of dollars at other venues and is now playing in Dunham Hall Theater.

A sea of children in their "High School Musical" merchandise swarmed the theater opening night. The excited children outnumbered adults nearly three to one. Amazingly all went silent as the curtains opened, and stayed that way as they watched in awe as a popular movie came to life in front of them.

Director of Promotions and Marketing for Dunham Theater Lana Hagan said the play recently visited the Scott Trade Center in St. Louis. Tickets, she said, were as much as \$100 a piece.

"I thought it was expensive," Hagen said. "I decided

right then and there that people needed to see this."

Hagan said the faculty of the SIUE Theater Department decided to bring this show to Edwardsville. "(We wanted) to offer entertainment at a price affordable for parents," Hagen said.

The play is an upbeat, colorful, peppy, clean nod to musicals of the past like "Grease" and "Bye-Bye Birdie." "High School Musical" offers a traditional storyline with fun songs that target a "tween" audience.

The term "tween" refers to those who are not children, but also not teenagers. They are between age classifications.

"High School Musical" director Peter Cocuzza feels the musical has a hip and interesting "Disney" message.

"It is a good piece of family entertainment," Cocuzza said, "it appeals to the community."

"It certainly appeals to the 'tween' generation," Cocuzza said, "everyone under 21 knows of it."

The play's decidedly clean message of challenging the status quo is delivered through catchy pop-style tunes. The young actors, many just out of high school,

showcase their abilities from beginning to end.

Last Thursday's opening night went without incident. Sophomore transfer student Zach Paul said the group had been practicing since early May. Paul, who plays Alan in the musical, thought the night went smoothly.

"I thought (opening night) went pretty well," Paul said. "The kids seemed to enjoy it. Hopefully the next show will be as good or better."

The play will run through this weekend. Thursday through Saturday the show starts at 7:30 p.m. Sunday, a matinee will start at 2 p.m. followed by a singalong with the cast.

Tickets are \$15, \$12 for students and senior citizens. Tickets are available at the Fine Arts Box Office. For more information, call the box office at 650-2774.

Angie Thomas can be reached at alestlelifestyles@gmail.com or 650-3531.

Pig races, demo derby featured at Madison County Fair

by Maggie Willis

Alestle News Reporter

Children yell excitedly about carnival rides and games, friends chat amiably while browsing 4-H exhibits, and crowds raucously cheer on chainsaw carving contests and tractor pulls, all to a backdrop of animal sounds and live music.

Yep, it's that time again—time for the annual Madison County Fair.

Running this year from Sunday through Friday, July 27, in Lindenville Park in Highland, the fair is a summer event that people from all over Madison County and beyond look forward to.

Depending on the weather, draws about 32,000 people each year, according to Secretary Treasurer Susan Zobrist,

who is in her sixth year of managing the fair.

The first fair ever held in Highland was in 1898, and the Fair Board was incorporated in 1936 and has been putting on the fairs since then.

This year, however, they've got a couple new treats: a school bus race and racing pigs to add to the already extensive list of regular fair activities.

There's also free entertainment provided by the 4-H exhibit Wednesday, Arts & Crafts on Thursday and Friday, and the Super Scientific Circus, whose schedule is posted on the grounds.

According to Zobrist, the busiest day of the fair is Sunday, which is the opening day and hosts the opening ceremony at 12:30 p.m.

"We call Sunday our family day because we have a lot of things for

families to do on Sundays here," Zobrist said. Some of those family-oriented events include the miss pigtail contest, school bus races and parade of princesses.

Zobrist also said that, out of all the events and exhibitions at the fair, the most popular is the arena events.

"Our arena events are a very popular part," Zobrist said. "The UMP Stock car race and combine demo derby are two of the most popular arena events."

While the arena events might be what draw newcomers, Zobrist recommends that people new to the fair make sure to plan time for looking around the fairgrounds.

"I would say, save a lot of time to walk around and look at all the stuff," Zobrist said. "We've got a lot of stuff to look at."

Vendors visitors might want to check

out are located in the Expo building, outside in the Mall area and in the tents and display a range of items: photographs, art, baked goods and collections, just to name a few.

Visitors may also walk through the barns to look at a number of cattle housed there.

"Everyone should come out and see the best that Madison County has to offer," Zobrist said. "We will show them a good time while they are here."

Admission to the fair is free, and parking is \$2.

For more information, a schedule of fair events or fairgrounds camping information, visit www.madcofair.com, e-mail madcofair@hometel.com or call 654-6656.

Maggie Willis can be reached at alestlelifestyles@gmail.com or 650-3531.

Ex-EHS star still assault suspect

David Chanen
and Chip Scoggins
Star Tribune (Minneapolis)
(MCT)

University of Minnesota junior football player Dominic Jones was charged Monday with third-degree sexual assault after a three-month rape investigation that also involved three of his teammates.

Jones, a star cornerback, was arrested Sunday night and booked in the Hennepin County Jail. His arrest was tied to the sexual assault investigation involving three other players.

Prosecutors said those three players, junior defensive end Alex Daniels, sophomore cornerback Keith Massey and sophomore running back E. J. Jones, remain suspects in the case.

Hennepin County Attorney Mike Freeman said that the investigation would continue. He also said that the players remained suspects and that their release did not signal that police presented his office with a weak case.

University of Minnesota Police Chief said that the victim was not a University Village resident and that she was not a University of Minnesota student. Shortly after the assault, the woman went to a hospital for a sexual-assault examination. Several days later, she reported the incident to police.

According to a search warrant affidavit filed April 16, the victim said she drank vodka at apartment No. 201 and was later raped by three men. The document listed evidence belonging to E.J. Jones, Massey and Daniels that police took from apartment No. 201, including mattress pads, bedding,



Ohio State wide receiver Ted Ginn Jr. (7) gets caught by Minnesota's Dominic Jones during a game in 2007. OSU won 44-0.

cell phones, condoms and covers for couch cushions.

She told police that she became intoxicated and that three men picked her up and took her to a bedroom, where they assaulted her. She went to the living room, where she passed out on a couch.

On Monday, Hestness said the woman drank a substantial amount of alcohol for somebody her size, but the trauma of the assault may have contributed to her passing out.

When she awakened, the woman

entered her number into a phone and called her own cell phone from them to further identify the suspects, the document said. After the incident, she was driven home by a person from the apartment. She then began receiving text messages and phone calls from the suspects, the document said.

Hestness said this case has had an unprecedented amount of investigation.

(c) 2007. Star Tribune, Distributed by McClatchy-Tribune Information Services.



TONY'S TIME OUT

Old-School v. New Kids

With the NFL season right around the corner, I wanted to compare this year's current crop of players to the players of the past. What would it have been like to see Reggie White line up across the field from Vince Young? Who would win a foot race between Emmitt Smith and Adrian Peterson? I put a star of old against a rising star to see who shines the brightest.

The first match-up is against one of the games best new up-and-coming quarterbacks, Tennessee Titan Vince Young, and one of the games best defensive lineman, former Green Bay Packer, the late Reggie White. Young's quickness and visual perception of the field makes him dangerous on the ground and gives him the edge to find a receiver when others would scan over them. However, White was one of the first players to introduce such innovative moves like the spin-

move, the bull-rush and was most famous for his sheer strength. Match-up number one goes to White.

Next lets put one of the games best wide receivers on the strong side and let him loose. I'll take the electric Jerry Rice of the San Francisco 49er's days. Back in his prime, Rice could catch anything within an arms reach regardless of the coverage. You get the ball to him; he'd get into the end zone. However, if you take some of the speed-blessed defensive secondary players of today you got yourself a pretty good match-up that may be some of the reason the Rice retired a few years ago. I'll take my chances defending with Champ Bailey from the Denver Broncos. With his speed and his sense for knowing where the ball will be, I'm giving this one to Bailey.

As Adrian Peterson, straight from the Oklahoma Sooners

locker room, steps onto the field in Minnesota, the question will be answered. Will Adrian Peterson, picked 7th overall, be the best running back in the game? Perhaps. However, lets say Peterson was drafted in 1981, which was four years before he was born, but let your imagination run. So, think Peterson lining up, receiving the hand off from Tommy Kramer and bursting through the hole in the offensive line, only to met by the most intimidating linebacker in the history of the game, Lawrence Taylor. Sorry, AP, but LT wins this one.

Finally, and probably the best match-up yet, would be the battle for the best head coach. Can you decide who you would rather have coaching your team for a battle of the decades? The now stars of Bill Cowher, Bill Belichick, Tony Dungy, Lovie Smith or Bill Parcells? The old-timers such as Dick Vermeil,

Vince Lombardi, Don Shula, Mike Ditka or Bill Parcells? This is a battle that sadly I will not attempt to solve. A coach makes the team, but the players win the game. Argue what you will but it's the truth.

I could take each position and match up the skills and achievements of the players of today and the alumni of the game, and the match-ups would be pretty close. However, I think that the improving training and the updated equipment and focus on speed and quickness will give the edge to the newer players. With the guts and the push-to-the-limit attitude, the players of old have the determination and the will to win. There is a new breed of NFL players entering into the game, lets hope this only gets better.

Tony Patrico can be reached at
alestlesports@gmail.com or 650-3524.

Softball signs player, adds coach

Tony Patrico
Alestle Sports Editor

The sole NCAA Division II National Champions for SIUE, the softball team, has made an addition to their coaching staff. Kelly Rhyne, formerly a member of the Angelo State University coaching staff, joins the Cougars in their final game of D-II competition.

Rhyne will take the vacant position left by former assistant coach Valerie McCoy, who stepped down to pursue different opportunities.

"Kelly is an outstanding individual who we expect will help this program right away as well in the future," SIUE Head Coach Sandy Montgomery said. "Her coaching and playing experience will add a layer of strength to the Cougar softball program."

Rhyne's previous coaching job at Angelo State helped the team head to the D-II National Championships as she completed getting her master's degree in kinesiology. While earning her degree, she worked as a graduate assistant.

Rhyne played softball for three years at Texas Tech and played her freshman year at New Mexico State. While at Texas Tech, she had 153 hits, 15 home runs, 84 RBI's and 30 doubles, all which currently rank her in the top five of each class. During her three years as a Red Raider, she held a batting average of .308.

Another new addition to the Cougars softball team is Iowa standout Kasey Schlafke. The four-sport athlete from Dallas Center, Iowa, signed a national letter of intent to take the field for the Cougars in the 2008-09 season.

Schlake will most likely play shortstop for the Cougars, where she has been a first and second team All-State performer for the past four seasons. She has held a batting average of over .375 and also earned All-Conference honors in other sports she has participated in.

"I think Kasey is a great indicator of our NCAA Division I recruiting future success," Montgomery said. "She is a very athletic, quick and high-energy person."

The Cougars will finish the 2008 season in NCAA Division II status and begin their Division-I competition in 2009.

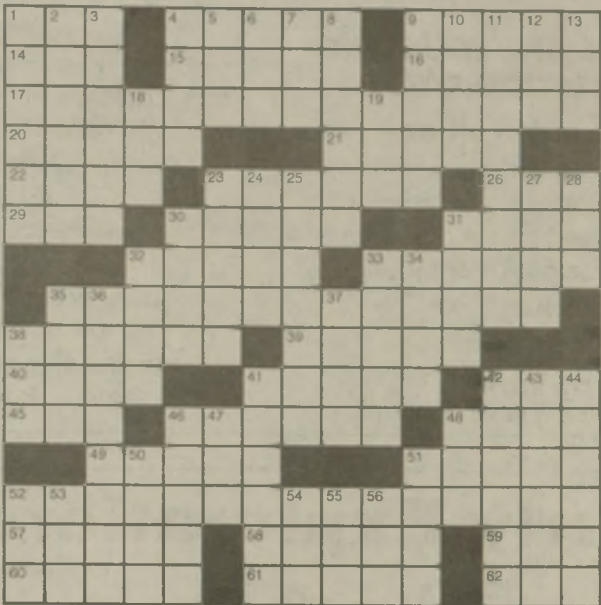
Tony Patrico can be reached at
alestlesports@gmail.com or 650-3524.

THE Daily Crossword

Edited by Wayne Robert Williams

- ACROSS**
- 1 Brit's raincoat
4 Short summary
9 Runs easily
14 Stevedores' org.
15 Studio alert
16 Poetic lament
17 EMT gatherings?
20 Mountain ridge
21 Barbary ape
22 Billy or nanny
23 Regained consciousness
26 Raggedy doll
29 D.C. clock setting
30 Unit of capacitance
31 Week-ending shout
32 Sprayed, defensively
33 Sign up
35 Furniture-makers gatherings?
38 "In Cold Blood" author
39 One of the Axis Powers
40 Envelope abbr.
41 Papal vestment
42 Early TV co.
45 Luau dish
46 Search for food
48 Lake formed by Hoover Dam
49 Central Florida city
51 Tidal bore
52 Acquitted ones gatherings?
57 "The Cloister and the Hearth" author
58 Hockey scores
59 Court divider
60 Paid parker
61 Els with tees
62 Dijon donkey

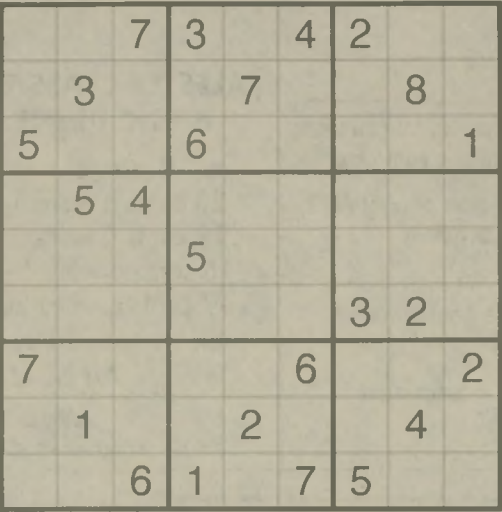
- DOWN**
- 1 Oasis, maybe
2 Oldsmobile models
3 Admonition



- 4 Wander
5 Spanish queen
6 Pres. Coolidge
7 Set sights
8 Future MD's course
9 Release
10 Mixed bag
11 Five-sided figure
12 Batter ingredient
13 Part of CBS
18 Addams Family cousin
19 Break bread
23 Hiding place
24 God of war
25 Portuguese wine
27 Guitarist Lofgren
28 Cowboy's org.
30 Bit of data
31 Helen of
32 Charged lepton
33 On-line transaction
34 Cairo's river
35 "Censor" of Rome
- 36 Not mandatory
37 Bachelor party
38 Beret or biretta
41 Citrus fruit
42 Saskatchewan capital
43 Swerve wildly
44 "___ Fideles"
46 Side
47 Corrida call
48 Tatami, e.g.
50 Secret lingo
51 Irish Gaelic
52 Journalist Kupcinet
53 Teacher' org.
54 Rocky peak
55 Kitchen utensil
56 Clay, today

SUDOKU

By Michael Mephram



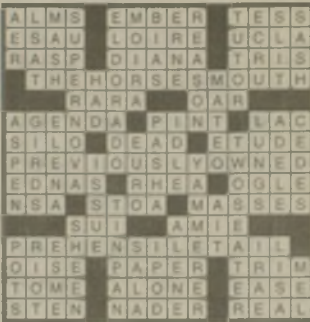
Complete the grid so each row, column and 3-by-3 box (in bold borders) contains every digit 1 to 9. For strategies on how to solve Sudoku, visit www.sudoku.org.uk.

(c) 2006 Michael Mephram. Distributed by Tribune Media Services. All rights reserved.
Now on Mobile! Key in 783658.com on your cell's Web browser for details. Charges will apply.

Wednesday's Answers

THE Daily Crossword

Edited by Wayne Robert Williams



SUDOKU

By Michael Mephram

1	8	9	7	3	2	6	4	5
2	3	5	9	4	6	7	8	1
4	6	7	8	5	1	3	2	9
9	4	6	2	1	3	5	7	8
7	5	2	6	9	8	4	1	3
3	1	8	5	7	4	2	9	6
8	2	4	3	6	9	1	5	7
6	7	1	4	8	5	9	3	2
5	9	3	1	2	7	8	6	4

The Family Monster by Josh Shalek



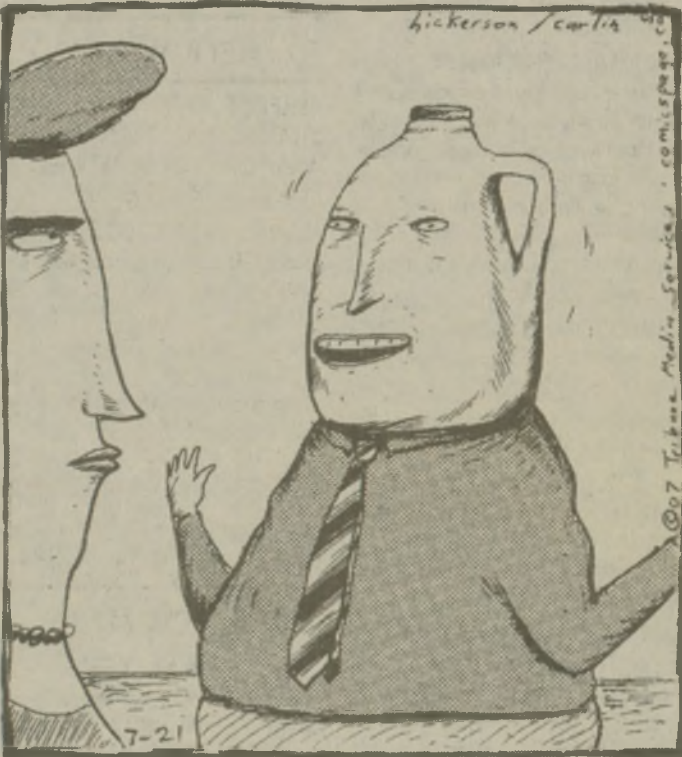
Atlanta Twelve String: www.joshshalek.com kid_shay@joshshalek.com

A College Girl Named Joe

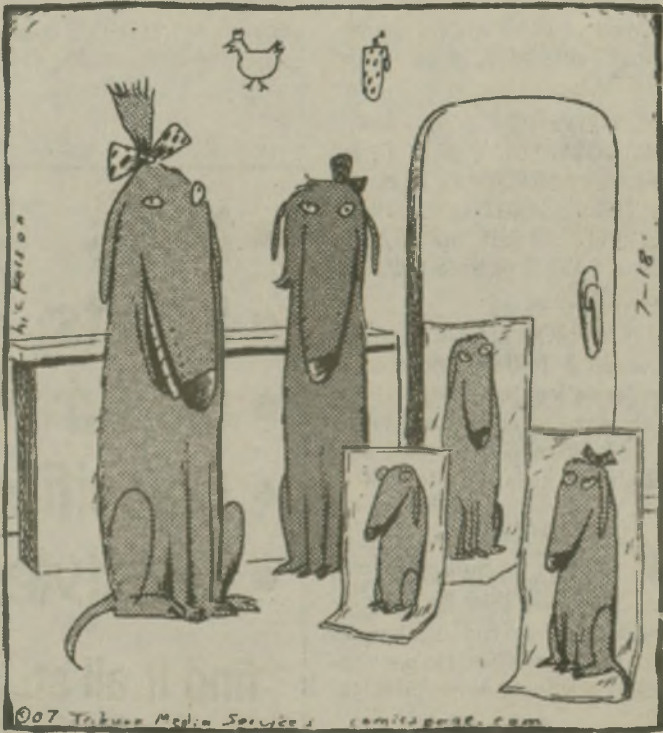


PAUL

BY BILLY O'KEEFE MRBILLY.COM/PAUL



"It's the ultimate conservation statement: recycled plastic surgery!"



"Some say I'm an overly protective mother, but I say hey, you can't be too careful, so I had Billy and the twins laminated."

Classifieds

8

www.thealestle.com

Wednesday, July 18, 2007

Place your classified ad at a time convenient for you using our easy, secure online interface at thealestle.com/classifieds

Your ad gets **TOTAL** exposure – the power of print AND the immediacy of the internet!

Your ad will be published **FREE** on our high- traffic web site just as it will appear in the printed version of our newspaper!

All using secure, encrypted SSL transmission for your protection.

ALESTLE CLASSIFIEDS GIVE YOU MORE!

BASIC PRINT INSERTION RATES:

10 word minimum for all ads.

20 cents a word 1-2 insertions, per insertion

19 cents a word 3-4 insertions, per insertion

18 cents a word 5-19 insertions, per insertion

17 cents a word 20+ insertions, per insertion

Print Extras:

All bold, additional \$5

Web Extras Vary

Please schedule your ad carefully as we cannot offer

refunds. Corrections must be noted by on the first day the ad appears in the newspaper.

Deadlines:

SUMMER

Wednesday Publication:

Noon Monday

Having trouble? Call 618-650-3528 or e-mail alestleclassifieds@gmail.com

Alestle Office Hours (MUC 2022):

8 a.m. - 4:30 p.m. Mon-Fri

FOR RENT

SPACIOUS 1 AND 2 BEDROOM APPT.

located across from Forest Park. 1 bed/\$550 and 2bed/\$675 incl.w/ s/ t and cable. Ask for Sue 314-361-8300

MALE ROOOMATES WANTED \$150.00 ALSO: Three bedroom House \$475.00 (618) 444-2267

FOR RENT, GLEN CARBON: 2 bdrm mbl home, fully furnished, central air, washer/ dryer, large patio, porch w/ lawn furniture, cable ready, private/ safe, walking distance to metro transit, smoking set-up outside only, no pets. Available now. \$500/ mth. Female students preferred. Must see to believe. Call Carrie: 791-0099.

STOP LOOKING START LIVING Spectacular 2 and 3-bed townhomes within 1 mile of SIUE. All kitchen appliances, w/ d hookups, free cable TV. Ask about SIUE special. (618) 692-9310 www.rentchp.com 692-9310

BEAUTIFUL 3 BEDROOM 1.5 BATH townhome finish basement. 2 and 4 bedroom units also available. Call (618) 772-9146.

24HR SELF STORAGE (NEW) Security, Fenced, Convenient off I-55 25min, Free Truck/ Trailer, Inexpensive for Students GrantRentalStorage.com 307-4286

3 bed apt close to SIUE, \$875.00, no pets, credit check, ready 8/1/07 656-8562

THE CLASSIC HOME FOR STUDY

4 Bedroom Classic Home Near Downtown Edwardsville/ Library, Partially Furnished \$324 per person 659-9700

APARTMENTS FOR RENT!! DOWNTOWN EDW. 3 BR, 2 (1) BR. AVAIL 8/1, EVERYTHING NEW, ALL ELECTRIC, WATER & TRASH INCLUDED, NO PETS; 3BR \$895 W/ D; 1 BR \$450; 1 BR \$575 CALL JEFF 806-2281

GLEN CARBON RENTALS- minutes to SIUE, 2 bedroom Apartments, Townhomes & Lofts, all units have w/d hk-ups, some with deck/patio, starting at \$595, some with 1.5 bath from \$625. Please call (618) 346-7878 or visit our website at www.osbornproperties.com.

2BR, 1.5 BA. TOWNHOUSE I-255/ Horseshoe Lake Rd. area 15 mins. to Saint Louis and SIUE. Includes w/ d and some utilities. No pets non-smokers only \$590/ month. (618)344-2125.

1 OR 2 BEDROOM IN MARYVILLE \$370/470 + deposit, lease, wa/ trash included, no pets, credit check required. (618)444-5619

FOR SALE

FOREIGN AND DOMESTIC vehicles for every budget 10 mins. away in Troy Illinois. Visit us online to see over 75 cars available right now. We also finance good and bad credit. www.1CarSales.com (618)667-CARS

HELP WANTED

PERFECT P/T JOB COLLEGE STUDENT WILL TRAIN AS DENTAL ASSISTANT MUST BE AVAILABLE 4PM-8PM MON-FRI 659-0456

MANAGEMENT POSTITION at local child care center Excellent parent relations, staff relations, and office experience preferred Must be DCFS director qualified Part-time position 2:00pm-6:15pm M-F Salary commenerative w/ experience Please call Jessica at 659-1438

PRE-K TEACHER POSITION at local child care center Must have 04 teacher certification Full-time position M-F Please call Jessica at 659-1438

ROOMMATE WANTED

Large House Quiet 10min Siue \$265/ Mo 618-567-8060

FEMALE ROOMMATE NEEDED Looking for someone easy to get along with and clean. 1 room available in upper loft. Located by business area of Glen Carbon. 267-1044

2 FEMALE ROOMMATES needed to share house less than 2 miles from campus. Interested call 531-6158

Early Explorations Inc.






At Early Explorations Inc.. The Preschool For All Program is a quality enhanced program that provides a play-based developmental screening and discounted student rate. The classrooms are mixed age groups (ages ranging from 3-5 year olds) We offer: hearing and vision screenings, parent/child libraries, monthly parent meetings/workshops, family reading nights, parent-teacher conferences, individualized child assessments, and goal setting, and developmentally appropriate classroom curriculum.

For information on screenings or openings.

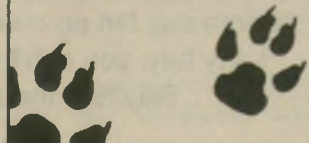
Please Call Jessica at:

(618) 659-1438

- News 
- Sports 
- Op/Ed 
- Classifieds
- Lifestyles

find it all at...

www.thealestle.com





Alestle Classifieds online

2006-2007

Place your classified ads online @ thealestle.com/classifieds

FREE!
online classifieds with purchase of print ads

6005 06200