

# GRADUATION EDITION INSIDE



SPORTS

THE

ALTON

## ALESTLE

EAST ST LOUIS

EDWARDSVILLE

LIFESTYLES



WWW.SIUE.EDU/ALESTLE/

◆ THURSDAY, DECEMBER 7, 2000

SOUTHERN ILLINOIS UNIVERSITY EDWARDSVILLE

Vol. 53, No. 29 ◆

## Grievance filed by professor

BY ANTOINETTE BERNICH  
ASSISTANT NEWS EDITOR

A School of Business faculty member is taking a leave of absence after allegedly being harassed and pressured to leave the university by the Business School dean and the chair of the finance and economics department.

Rakesh Bharati, associate professor of economics and finance filed a grievance against Dean Bob Carver and Chair Don Elliott, charging harassment and intimidation.

Bharati said that the harassment started when he questioned the School of Business' proposal to merge the finance and economic departments last fall. Bharati claims that he and other faculty members were unsure of the effects of the proposed change, and they did want to have to compromise the quality of courses.

"We proposed looking at the issue and deciding how to run together when the merger takes place," Bharati said. "The administration made verbal promises that the finance department would be OK once the merger takes place."

## Seasons greetings

Happy holidays from the Alestle staff.

This is the last edition of the Alestle for the fall semester. So take a break from us and prepare for the frenzy of finals week.

We will return Jan. 9 with a new look. In the meantime, final examinations are scheduled from Saturday through Friday, Dec. 15.

Semester break will last through Jan. 7. Day classes resume Monday, Jan. 8, and weekend classes resume Saturday, Jan. 13.

Since regular classes are not in session beginning Saturday, the Service Center and Academic Counseling and Advising will observe special hours of operation. They will be closed Saturday and Sunday, open from 8 a.m. to 7 p.m. Monday and Tuesday, and open from 8 a.m. to 4:30 p.m. Wednesday through Friday, Dec. 22. Regular hours will resume Tuesday, Jan. 2.

In addition, most student services will be open until 6:30 p.m. Monday but will close at 4:30 p.m. Thursday, Dec. 14.

Enjoy the break safely.

## Crazy parking in a winter wonderland



Anurag Gupta/Alestle

**Drivers leave cars parked crooked in the student lots after Wednesday's snow covered the campus. Lines were not visible early in the day before Facilities Management could plow the snow.**

Bharati said that this August he was called into a meeting with Elliot and Carver. Bharati said Carver told him that his prospects at this institution were limited and there was nothing that he could do to redeem himself.

see FACULTY, page 4

## Holiday shopping can be affordable

NAPS

It's better to give than to receive, and this year's holiday selections can help make the experience of giving even better. That's because you don't have to break the bank to give beautiful gifts to the people on your list.

According to a recent survey conducted by Opinion Research Corp., consumers plan to spend an average of \$900 on holiday gifts this year. Savvy shoppers, however, can get more mileage out of their dollars by shopping off price this and every season.

"Finding the perfect gift can often be a daunting and costly endeavor," Marshalls' shopping expert Renee Katziff said. "With the wide variety of designer fashions, accessories and gifts for the home all available at 20 to 60 percent off, savvy shoppers are

sure to find the perfect gift at the perfect price."

This year, retailers are helping make the "thrill of the find" more gratifying with these and other great gift ideas, all for under \$20.

For Mom and Dad: holiday picture frames, scented candles or stainless steel and copper cookware.

For sister or brother: boxed notecards and stationery, designer fragrance sets or warm fleece vests.

For friends: holiday ornaments in a variety of styles, bath-and-body gift sets — including lotions, sprays, soaps and candles — or hand-painted ceramic plates, bowls and serving pieces.

For teacher or co-worker: assorted teas and jams, international boxed chocolates,

cakes and cookies, beautifully crafted wreaths or dining room centerpieces.

"The most important thing you can do this holiday season is to plan ahead and shop smart," Katziff said. "Make a list and always be sure to set a budget and stick to it."

"And, to guarantee a stress-free shopping experience, shop early in the morning or late at night to avoid the crowds," Katziff added.

Another way to avoid the crowds is to shop online. Choose from discounted books, music, movies and many other items at sites such as [www.amazon.com](http://www.amazon.com).

To give a percentage of a purchase to one of hundreds of charities, visit [www.mrgoodbucks.com](http://www.mrgoodbucks.com). This site offers links to dozens of online retailers.



*Know Your World.*

**the Alestle**

ALTON, EAST ST. LOUIS & EDWARDSVILLE  
a student publication  
Southern Illinois University Edwardsville

**NEWS**

*Always Searching...Questioning...Reporting*

 **Westgate**   
Apartments & Townhomes  
10 minutes from SIUE!

**ASK ABOUT OUR COLLEGE SPECIAL**

2 Bedroom Townhomes  
(with W/D hook-ups)


1 & 2 Bedroom  
Garden Apartments

Laundry Facilities Available • Some Utilities Included

Call For Prices & Availability  
**(618) 931-0107**

An unexpected pregnancy doesn't come with all the answers. That's why The Cradle offers support on matters of adoption to those who seek it. You'll even have the option of choosing your child's adoptive parents and staying in touch. The decisions are yours. But we can help you find the right solution.

**THERE'S ONE TEST COLLEGE CAN'T PREPARE YOU FOR.**

**theCradle**  
 **1-800-CRADLE4**  
ANSWERS. SUPPORT. SOLUTIONS.

[WWW.CRADLE.ORG](http://WWW.CRADLE.ORG)

## Craft fair offers unique holiday gifts



Anurag Gupta/Alestle

Vendors and shoppers exchange cash for crafts at the Arts and Crafts Holiday Fair Wednesday in the Morris University Center Goshen Lounge. The fair will last until 3:30 p.m. Thursday.

## Campus Scanner

**Give Blood:** The American Red Cross is sponsoring blood drives at the following times and locations:

from 2:30 to 6:30 p.m. Thursday at the Amoco Travel Center, 819 Edwardsville Road, Troy;

from 10 a.m. to 2 p.m. Saturday at St. Paul's Lutheran Church, 1327 Vaughn Road, Wood River;

from 10 a.m. to 2 p.m. Saturday at Esic Baptist Church, 1000 University Drive, Edwardsville;

from 3 to 7 p.m. Wednesday at the Roxana Library, 200 N. Central Ave.;

from 8 a.m. to 4 p.m. Friday, Dec. 15, at The Bank of Edwardsville, 330 W. Vandalia, Edwardsville;

from 11:30 a.m. to 4 p.m. Friday, Dec. 15, at the Alton Mental Health Center, 4500 College Ave.;

and from 9 a.m. to 7 p.m. Saturday, Dec. 16, at Alton Memorial Hospital, 1 Memorial Drive.

**Art:** "Mexica 2000," an exhibit of works by SIUE art and design students, who created the pieces during a summer program of study in Mexico, is on display through Dec. 15 in the New Wagner Gallery, just off the atrium lobby of the Art and Design Building. The exhibit is curated by Laura Strand and Paul Dresang, both members of the SIUE art and design faculty. For more information, call 650-3071.

**Musicales:** Tickets are available for the 13th Annual Holiday Musicales house tour from 2 to 5 p.m. Sunday sponsored by the SIUE music department and the Friends of Music, a support organization for the department. Participants will visit three area homes, decorated for the holidays, where they will hear jazz, classical and vocal music performed by SIUE music students and faculty. In addition, holiday refreshments will be served at each home. Tickets for the event are \$10. Proceeds support music scholarships. For more information or to obtain tickets, call Martee Lucas at 650-3799. Tickets also are available from Friends of Music members.

**Farewell:** A retirement reception for Carol DeConcini, the budget officer for Academic Affairs, from 1:30 to 3:30 p.m. Friday, Dec. 15, in the Provost Conference Room.

**Children's Theater:** "The Gift of the Magi," a popular holiday tale by O. Henry, and other seasonal works by the master of the short story, will

be staged at 2 and 7 p.m. Saturday in the Dunham Hall theater. The stories will be staged by the Imaginary Theatre Company as part of Season for the Child, theater offerings for the entire family sponsored by The Bank of Edwardsville and the Friends of Theater and Dance, a support organization for the department of theater and dance. Proceeds benefit FOTAD's scholarship fund. Tickets are \$5 and are available through the Fine Arts box office at 650-2774.

**Music:** The SIUE Orchestra will perform in concert at 7:30 p.m. Friday in Dunham Hall theater. Michael Mishra, musical director of the orchestra, will conduct. Tickets are \$3; students, \$2. For more information, call the music department at 650-3900.

**Leisure Learning Activities:** "Targeted Topics Using Word: Creating Brochures and Fliers and Targeted Topics Using Excel: Pivot Tables" are scheduled from 8:30 to 10:30 a.m. and 11 a.m. to 1 p.m., respectively, Saturdays, Dec. 9 and 16, in Room 0303 of Founders Hall with instructors from the Express 2000 staff. The fee is \$69 for each course.

**SBDC:** The SIUE Small Business Development Center offers Small Business Tax Issues from 6:30 to 9:30 p.m. Thursday, Dec. 14, with instructor Carl Weakley. The fee is \$50. Courses are offered in Room 1101 of 200 University Park. For more information, call 650-2929.

**More Music:** The Webster University Chorale will present a concert of holiday music from around the world at 5 p.m. Sunday in Webster University's Winifred Moore Auditorium, 470 E. Lockwood Ave., St. Louis, Mo. The concert is free and open to the public. For more information, call (314) 968-7128.

**Co-op:** Volunteers are being sought for the Share Food Food Co-op from 8 a.m. to noon Saturday, Dec. 16, to help package and distribute food. Participants must wear work clothes, sturdy shoes and work gloves. Transportation will be provided and will depart at 8 a.m. from Lot B and return to the same location at noon. There is no fee to participate, but volunteers must make a reservation by contacting the Kimmel Leadership Center at 650-2686, or via e-mail at sharefood@hotmail.com.



**EDITORIAL:**  
**EDITOR IN CHIEF:**  
 Brian Wallheimer  
**NEWS EDITOR:**  
 Danielle Stern  
**ASSISTANT NEWS EDITOR:**  
 Antoinette Bernich  
**LIFESTYLES EDITOR:**  
 Brad Brefeld  
**ASSISTANT LIFESTYLES EDITOR:**  
 Meghan Daugherty  
**SPORTS EDITOR:**  
 Rick Crossin  
**ASSISTANT SPORTS EDITOR:**  
 Kumar Bhooshan  
**CHIEF COPY EDITOR:**  
 Melissa Stein  
**COPY EDITORS:**  
 Madhuri Immaneni  
 Karen M. Johnson  
**PHOTO EDITOR:**  
 Sheri McWhirter  
**SPECIAL SECTIONS EDITORS:**  
 Elizabeth Grimsley  
 Maureen Hargman  
**GRAPHICS/PRODUCTION:**  
**GRAPHICS ASSISTANTS:**  
 Jennifer A. Green  
 Andrew Lehman  
**WEBMASTER:**  
 Rakesh Kumar Varganti  
**ADVERTISING:**  
 Nicole Humphreys  
**CIRCULATION:**  
 Scott Garkie  
 Rakesh Kumar Varganti  
**ALESTLE ADVISER:**  
 MIKE MONTGOMERY  
**GRAPHICS SUPERVISOR:**  
 MIKE GENOVESE  
**OFFICE MANAGER:**  
 MARY ALLISON

THE FIRST COPY OF EACH  
 ALESTLE IS FREE OF CHARGE.  
 EACH ADDITIONAL COPY COSTS  
 25 CENTS.

#### LETTERS TO THE EDITOR POLICY:

The editors, staff and publishers of the Alestle believe in the free exchange of ideas, concerns and opinions and will publish as many letters to the editor as possible. Letters may be turned in at the Alestle office located in the Morris University Center, Room 2022 or via e-mail at [alestle\\_editor@hotmail.com](mailto:alestle_editor@hotmail.com). All hard copy letters should be typed and double-spaced. All letters should be no longer than 500 words. Please include your phone number, signature (or name, if using e-mail) and student identification number.

We reserve the right to edit letters for grammar and content. However, great care will be taken to ensure that the message of the letter is not lost or altered.

Letters to the editor will not be printed anonymously except under extreme circumstances.

The Alestle is a member of the Illinois College Press Association, the Associated Collegiate Press and UWIRE.

The name Alestle is an acronym derived from the names of the three campus locations of SIUE: Alton, East St. Louis and Edwardsville.

The Alestle is published on Tuesdays and Thursdays during fall and spring semesters, and on Wednesdays during summer semesters. For more information, call (618) 650-3528.

#### Have a comment?

Let us know!

Send us an e-mail:

[alestle\\_editor@hotmail.com](mailto:alestle_editor@hotmail.com)

The Alestle

Campus Box 1167

Edwardsville, Ill. 62026-1167

## Another semester draws to a close



Another semester has come to an end. Well, close enough anyway.

The last week draws to a close, and anxiety mounts as we have to get ready for finals. Don't worry, though. It will all be over soon. Just think how relieved you'll be when you can walk out of that classroom for the last time this semester and not have to look back. Well, not for a few weeks at any rate.

Soon enough, we'll have to walk back into class and go through the whole ordeal again. Next semester won't be as tough as this one. I tell myself that every semester. It's rarely true.

Check out our graduation edition on the inside of this Alestle. Good luck to the graduates in all their endeavors. It's time to step out into the real world. You'll be missed.

The graduation edition is the first of several new things we'll be doing at the Alestle in the coming year. We are going to be adding new sections and changing the design of the paper. Let us know what

you think. The only way we can know if we're doing a good job is if you let us know.

In all, I think it's been a pretty good semester. The letters to the editor have been rolling in steadily. Thank you for that. I know I may not have the most popular ideas or opinions, but I hope that I am getting people to think.

If you think we are missing things to cover on campus, let us know that as well. We're always looking for a good story. Of course, the easiest way to help influence what goes into the Alestle is to come here and get a job. We're always looking for new writers.

But for now, have a safe break and remember to do something fun. If you're graduating, good luck. If you're coming back, make sure you come back in one piece.

We'll be here when you get back.

Brian Wallheimer  
 Editor in Chief

## Letters to the Editor

Dear Editor,

I would like to speak out on behalf of all waitresses and waiters. In your article about tipping your servers, many people complained about how service will affect their server's tip. As a waitress, I was appalled by what many people said.

First of all, let me say this - serving is hard. If your server is taking a long time, take a good look around you. How many tables is he/she waiting on? Is he/she waiting on parties of six or more? Are there other rooms in the restaurant? Your server may have other tables that you cannot even see.

Second of all, your server is not taking a long time with your food. The kitchen is. We take your order, turn it in to the kitchen and wait. We do not cook your food. We are too busy refilling your drinks. Not to mention your food may take a while. Did you order something without olives or with extra mayonnaise? Maybe it's your fault your food is taking so long. When you add or subtract tons of stuff from your order, it gets confusing, and the kitchen may make a mistake. Also, if your food tastes bad, it is not our fault either.

And finally, let me just say this: A big tip will make your server's night. Even if it's only a dollar or two more than what is expected, trust me. It pays off. Leaving your server a decent tip will make him or her happier, and that will reflect how he or she treats you and other customers.

So, basically, be grateful. You don't have to lift a finger. We're the ones running around. We are the ones sending your food back because "It just doesn't taste good." We are bending over backwards to help and serve YOU. Servers are people too, and we're not at all as dumb as you think.

Kate Winterich  
 Sophomore

Dear Editor,

This is in response to the comments made by an Indian student regarding the Alestle's advertisement using Gandhi on Dec. 5.

I am from India and am an ardent admirer of Gandhi's ideals and philosophy. He stood for the downtrodden and the underdogs in society, advocating their empowerment. Above all, he was an egalitarian almost to a fault. I am sure Gandhi would have loved to champion the cause of learning with equal enthusiasm for the largest as well as the smallest newspaper.

Far from being offended, I am proud to see that Gandhi was used as an example for the readers of Alestle.

Sincerely,  
 Dimple Mohanty,  
 Grad. Student, Mass Comm.

Dear Editor:

The sound-off comment in the Alestle on Thursday, Nov. 30 was an egregious exaggeration. Contrary to "paying like \$12 for an order of six wings, an order of fries, a small salad, a little bit of cottage cheese and two boiled eggs," the actual price of a small salad, a generous portion of cottage cheese and two boiled eggs is \$1.76; the actual price of an order of six wings and an order of fries is \$2.91. The actual total of all of these menu items is \$4.67 not \$12. We try to make every effort to keep reasonable prices while accommodating and meeting the needs of our customers. It would be a pleasure to meet and discuss this matter with the person who stated those comments in sound-off.

Sincerely,  
 William J. Canney  
 Assistant Director for Dining Services

## Sound-off line operational

If you've ever wanted to write a letter to the editor but couldn't find a pen and paper, the Alestle has another option for you.

The Alestle sound-off line is operational and waiting for calls.

Similar to sound-off lines at other newspapers, the Alestle's comment line is there 24 hours a day, seven days a week waiting for you to call and sound off. The number is 841001 from any campus phone.

All calls are anonymous, regardless of any identification given.

However, because calls are anonymous, the Alestle reserves the right to edit all comments.

At the end of each day, all comments will be transcribed and printed in a sound-off section in the next edition of the Alestle on the editorial page.

So, if you don't want to write a letter to the editor, feel free to call and sound off.

**Got a comment?**  
**Write a letter to**  
**the editor.**

**Do you like to write?**  
**If so, give us a call.**  
**650-3528**

**KNOW YOUR WORLD.**  
**READ THE ALESTLE.**

**Want to sound off? Call the Alestle sound-off line at 841001**



# SIUE students chosen for 'Who's Who'

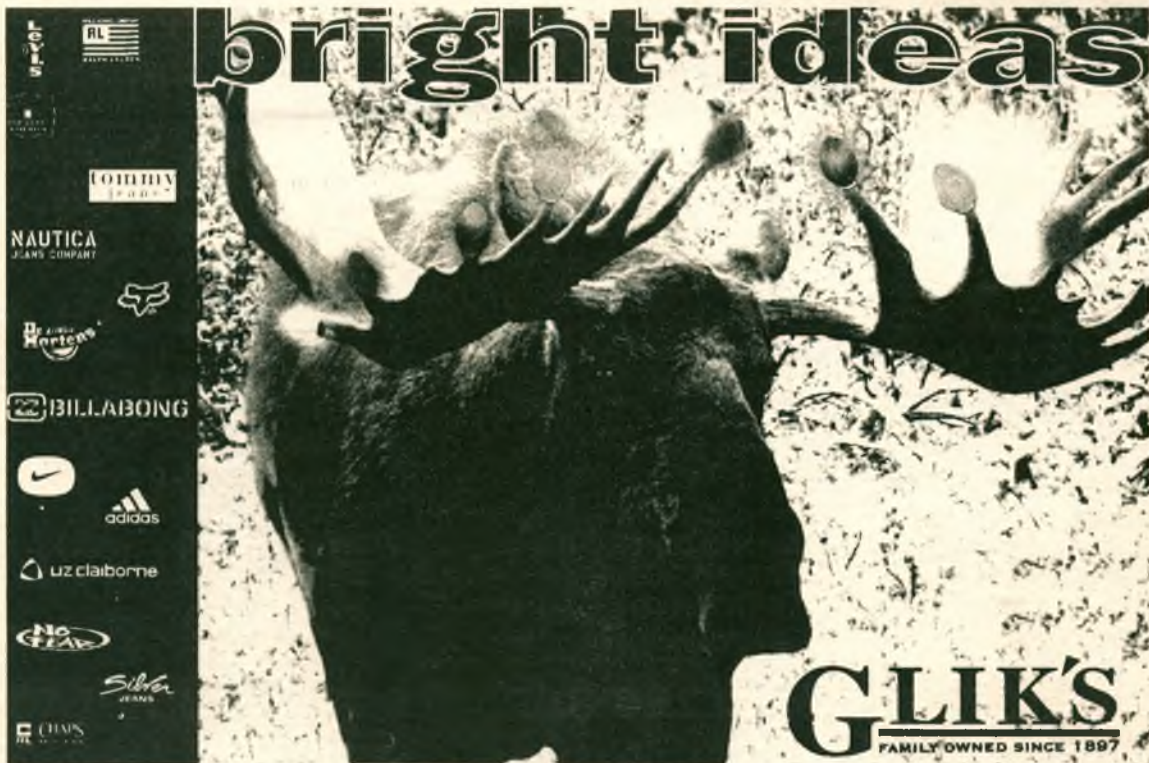
ALESTLE STAFF REPORT

The 2000-01 edition of "Who's Who Among Students in American Universities and Colleges" will include the names of 17 SIUE students.

A campus nominating committee and the directory editors have included the students' names based on their academic achievement, service to the community, leadership in extracurricular activities and potential for continued success.

Students have been honored in the annual directory since it was first published in 1934. More than 2,300 higher education institutions are included worldwide.

The SIUE students chosen are the following: Angela Scott, Todd Sivia, Sandra Schlosser, Joseph Hinton, Erik Jones, Jay Salitza, Noor Ali-Hasan, Darby BeDell, Melissa Burgess, Julie Pena, Kathryn Rathert, Vicki Demkey, Amy Hellrung, April Trammell, Tammy Drilling, Patricia Graham and Govinda Pai.



## Police incidents

### Accident

11/28/00

A woman struck a deer on South University Drive.

Police issued a citation to Caixia Hu for leaving the scene after hitting a stop sign near Lot 8 and not reporting the incident.

11/30/00

A woman struck a deer on East University Drive.

### Theft

11/30/00

A man reported money, a check and a Rolex watch stolen from the men's locker room in the Vadalabene Center.

12/1/00

A man reported his Gateway laptop computer missing from Founders Hall, Room 0107.

12/4/00

A resident of Cougar Village Building 527 reported missing compact discs and savings bonds.

12/5/00

Banners were reported stolen from the Morris University Center Goshen Lounge.

A woman reported her clothes missing from the Cougar Village Commons Building laundry facility.

### Traffic

11/27/00

Police issued a citation to Michael A. Wandling for speeding on University Drive.

Police issued citations to Holly A. Broom for no insurance and speeding on University Drive.

Police issued citations to La Fondria A. Booth for no insurance and disobeying a stop sign on University Drive near Lot 2.

11/29/00

Police issued a citation to Shelley A. Grant for speeding on Circle Drive.

11/30/00

Police issued a citation to Amy S. Brown for speeding on University Drive.

Police issued a citation to Melissa J. Birk for disobeying a stop sign on University Drive near Lot 2.

12/1/00

Police issued a citation to Eureka T. Taylor for disobeying a stop sign and no insurance on Cougar Drive.

Police issued citations to Glenn L. Bradford for speeding and no insurance on North University Drive.

12/2/00

Police issued citations to Jessica D. Craig for speeding and no insurance on Cougar Lake Drive.

Police issued a citation to Laverna J. Clendon for speeding on South University Drive.

12/3/00

Police issued a citation to Yvette S. Stewart for speeding on Cougar Lake Drive.

Police issued a citation to Melanie Harris for no insurance.

## FACULTY

from page 1

Bharati said Carver pressured him to "make a fresh start and move on to a different university."

Carver replied, "This is a pure fabrication on the part of the faculty member. He is a tenured faculty member. That was something he requested. No one can force a faculty member to leave against his will." In the conversation, Carver declined to name the faculty member.

Bharati is taking a leave of absence from SIUE to join a top U.S. corporation in Texas.

"I would like to be away for a while to decide if I would like to return to a place where the administration appears to have no

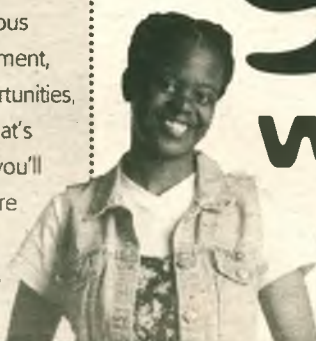
respect for academic freedom and professionalism," Bharati said.

"I fear that there might be similar departures of finance faculty in the near future," Bharati said. "I intend to fight it all the way. If no one opposes this, it will happen to other faculty members."

According to university policy, a three-member panel of tenured faculty will be appointed by the Faculty Senate to hear Bharati's complaint, which was filed Oct. 23. The finding of the hearing committee will be presented to Chancellor David Werner. As of yet, no hearing date has been set.

Well, maybe not everywhere. But SSMHC's network of hospitals offers the broadest range of facilities in the St. Louis area. Add this wide choice of locations to the flexibility of our work schedules, generous tuition reimbursement, great career opportunities, and excellence that's bone-deep, and you'll want to learn more about becoming an SSMHC nurse.

# Wherever you go, there we are.



Apply online right now.

Find out about specific job opportunities and the exceptional benefits we offer.

[www.ssmhealth.com](http://www.ssmhealth.com)

Or phone 877-916-7300 or 314-951-7300.



E.O.E. M/F/D/V

SSM Cardinal Glennon Children's Hospital • SSM DePaul Health Center • SSM St. Joseph Hospital of Kirkwood  
SSM St. Mary's Health Center • SSM St. Joseph Health Center • SSM St. Joseph Hospital West • SSM Rehab  
SSM Glennon Care for Kids • SSM Medical Group • SSM DePaul Medical Group • SSM St. Charles Clinic Medical Group



# Lifestyles

PEOPLE, ENTERTAINMENT & COMICS

## NO DAY BUT TODAY

BY BRAD BREFELD  
LIFESTYLES EDITOR

Once again the Fox Theatre will be presenting the highly controversial but touching Broadway musical "Rent."

The show opens on Dec. 19 and is playing through Dec. 23 as a special presentation in the Firststar Broadway Series. Curtain times for the show are at 8 p.m. Tuesday, Dec. 19, through Thursday, Dec. 21, and at 2 p.m. and 8 p.m. Friday, Dec. 22, and Saturday, Dec. 23.

This marks the second national tour of "Rent." The Benny Touring Company began performances in July 1997 in La Jolla, Calif., before moving to Los Angeles for an 18-week run and is still continuing across the country. The show continues its successful run on Broadway as well as in many countries.

Inspired by Giacomo Puccini's opera "La Boheme," the story of "Rent" follows this untimely classic. However, Puccini's beloved Bohemians are now transported to a world of AIDS, drugs, homelessness, transvestites and rent money, all to a rock 'n' roll beat.

"Rent" celebrates a community of artists living on the edge and reaching for glory in New York City's East Village around Christmas. Although this is an ensemble production, the story primarily centers on two roommates, Roger, a struggling musician who is HIV positive, and Mark, a filmmaker and video artist. Both are in need of rent money. As Roger is trying to finish up his last song before he dies, he is interrupted by Mimi, an exotic dancer

infected with AIDS, who also faces a drug problem. Eventually Roger and Mimi begin a relationship, both unaware of the other's disease.

Amidst the ups and downs of Roger and Mimi's relationship, Mark has issues to deal with as well. His ex-girlfriend, Maureen, a performance artist, has asked him to fix her sound equipment before she goes on stage. To add to this confusion, JoAnne, a public lawyer who also happens to be Maureen's new love interest, meets him.

To make theater enjoyable, "Rent" has somewhat of a concert feel to it. The actors portraying the roles actually sing into microphones. The songs are not your typical Broadway-style show tunes. The music has an edgier, rock-sounding tone. Songs include "Seasons of Love," "Would You Light My Candle" and the ever-popular "La Vie Boheme."

"Rent" first opened on Broadway at the Nederlander Theatre on April 29, 1996, and claimed all major theater awards. Awards include a 1996 Tony Award for Best Musical and a Pulitzer Prize for drama, as well as dozens of others.

Ticket prices for "Rent" range from \$22 to \$54 for Tuesday through Thursday evening shows and Friday and Saturday matinees. Friday and Saturday evening tickets cost \$26 to \$58. Tickets are now on sale at the Fox Theatre box office and all MetroTix locations. Tickets can also be purchased at all area Famous-Barr stores, Streetside Records and select Schnucks Video Clubs. By calling MetroTix at (314) 534-1111 or by visiting the Web site at [www.metrotix.com](http://www.metrotix.com), tickets may be charged to MasterCard, VISA, Discover or American Express. Group seating and discounts are also available for groups of 20 or more by calling (413) 535-2900.

"Rent" is sure to be an enjoyment and is likely to touch the lives of its viewers. However, this show may not be suitable for children under 15 due to mild language and brief nudity. For more information, visit [www.fabulousfox.com](http://www.fabulousfox.com) or [www.siteforrent.com](http://www.siteforrent.com).



photos courtesy [www.siteforrent.com](http://www.siteforrent.com)



photo courtesy Joan Marcus

The cast of "Rent."



**SUNDAZZLERS TANNING****656-UTAN (8826)****Tan Until The End Of The Year  
For Only \$19.00!****SIUE STUDENT SPECIAL  
8 VISITS (160 MINUTES) FOR \$20**

Student ID required along with coupon

**A Friday Night Jazz Session  
down in the Den. "FREE"****Friday  
Dec. 8 @ 6pm**Come experience some  
really cool & smooth jazz  
live in the Cougar Den.**FREE ADMISSION****Kerasotes Theatres**visit our website at [www.kerasotes.com](http://www.kerasotes.com)**Showtimes  
Start Friday!****CINE 254-6746**  
400 Central Ave., Roxana**\$2.00 All Seats / All Shows**Meet the Parents (PG-13)  
Fri/Sat 7:00, 9:30;  
Sun-Thurs 7:00;  
Sat/Sun Matinee 2:00**SHOWPLACE 12 659-SHOW**  
Edwardsville  
Just W. of Rt. 159 on Center Grove Rd.**ALL STADIUM SEATING • ALL DIGITAL SOUND****\$5.00 • All Shows Before 6 pm****\$5.50 • Students • Seniors****Dungeons & Dragons (PG-13)**Daily 3:50, 6:40, 9:20;  
Sat/Sun Matinee 1:10**Vertical Limit (R)**Daily 3:40, 6:50, 9:40;  
Sat/Sun Matinee 12:50**Proof of Life (PG-13)**Daily 4:00, 7:00, 10:05;  
Sat/Sun Matinee 1:00**102 Dalmations (G)**Daily 4:10, 6:45, 9:10;  
\*no 6:45 show Sat

Sat/Sun Matinee 1:40

**Unbreakable (PG-13)**Daily 4:50, 7:15, 9:50;  
Sat/Sun Matinee 2:00**The Grinch (PG)**Daily 5:00, 7:30, 10:00;  
\*Open Caption Tues 12/12 only

Sat/Sun Matinee 12:00, 2:30

**The 6th Day (PG-13)**Daily 4:40, 7:40, 10:20;  
Sat/Sun Matinee 1:50**Bounce (PG-13)**Daily 4:20, 7:10, 9:30;  
Sat/Sun Matinee 1:30**Rugrats in Paris (G)**Daily 4:30, 6:30, 9:00;  
Sat/Sun Matinee 12:10, 2:10**Men of Honor (R)**Daily 4:15, 7:20, 10:10;  
Sat/Sun Matinee 1:20**Charlie's Angels (PG-13)**Daily 5:10, 7:50, 10:15;  
Sat/Sun Matinee 2:20**Meet the Parents (PG-13)**Daily 5:20, 8:00, 10:30;  
\*no 8:00 show Fri & Sat

Sat/Sun Matinee 12:20, 2:40

**The Emperor's New Groove (G)**

Sat Sneak Preview 7:15

**The Family Man (PG-13)**

Fri &amp; Sat Sneak Preview 8:00

**NAMEOKI CINEMA 877-6630**  
Nameoki Village, Granite City**\$2.00 All Seats / All Shows**Little Nicky (PG-13)  
Fri/Sat 7:00, 9:30;  
Sun-Thurs 7:00;  
Sat/Sun Matinee 2:00**102 Dalmations (G)**Fri/Sat 6:45, 9:15;  
Sun-Thurs 6:45;  
Sat/Sun Matinee 2:15**COTTONWOOD CINEMA 656-6390**  
Upper Level of Cottonwood Mall  
(Next to Walmart) • Edwardsville**\$2.00 All Seats / All Shows****The Legend of Bagger Vance (PG-13)**Fri/Sat 6:45, 9:20;  
Sun-Thurs 6:45;

Sat/Sun Matinee 2:00

**Remember the Titans (PG)**Fri/Sat 7:00, 9:30;  
Sun-Thurs 7:00;

Sat/Sun Matinee 2:15

**Little Nicky (PG-13)**Fri/Sat 7:15, 9:40;  
Sun-Thurs 7:15;

Sat/Sun Matinee 2:30

**EASTGATE 6 254-5289**  
Eastgate Center, East Alton**\$4.00 • All Shows Before 6 pm****• Students • Seniors****Proof of Life (PG-13)**Fri/Sat 4:00, 6:50, 9:40;  
Sun-Thurs 4:00, 6:50;

Sat/Sun Matinee 1:00

**Rugrats in Paris (G)**Daily 4:20, 6:40, 8:50;  
Sun-Thurs 4:20, 6:40;

Sat/Sun Matinee 1:50

**Bounce (PG-13)**Fri/Sat 4:45, 7:10, 9:50;  
Sun-Thurs 4:45, 7:10;

Sat/Sun Matinee 2:10

**102 Dalmations (G)**Fri/Sat 3:50, 6:30, 9:00;  
Sun-Thurs 3:50, 6:30;

Sat/Sun Matinee 1:15

**Unbreakable (PG-13)**Fri/Sat 5:00, 7:30, 10:00;  
Sun-Thurs 5:00, 7:30;

Sat/Sun Matinee 2:20

**The Grinch (PG)**Fri/Sat 4:30, 7:00, 9:30;  
Sun-Thurs 4:30, 7:00;

Sat/Sun Matinee 2:00

**FREE REFILL on All Sizes of Popcorn and Soft Drinks**

# Say What?

PHOTOS BY BETH KRUZAN  
PHOTO STRINGERIf you could have any super power,  
what would it be and why?"My super power would  
be the telepathic ability.  
Then, I can better  
understand women."  
Tony Santiago  
Junior, sociology"I would like to be able to  
scratch and sniff  
everything, but only smell  
grape. Why? It would be  
an easy power to conceal."  
Jay Clouse  
Sophomore, philosophy"Telekinesis, the ability to  
move things with my mind.  
That way I'd be able to get  
snacks without getting up."  
Andy Sanders  
Senior, economics and  
finance"Be able to seduce any  
woman at any time. Why?  
Obvious reasons."  
Jerad Woelfel  
Senior, accounting"My power would be the  
ability to get money any time  
I need to, since I don't have  
time for a job. I still need to  
be able to have my dream  
home and lifestyle."  
Sarah Eller  
Sophomore, elementary  
education

## Homes for the holidays

BY CHANELLE SMITH  
LIFESTYLES STRINGER

The holidays are approaching and what better way to spread Christmas cheer than with music. The SIUE department of music along with the Friends of Music invites all to celebrate the holidays with the 13th Annual Holiday Musicales from 2 to 5 p.m. Sunday.

The musical journey allows participants to visit three area homes decorated for the holidays. In each home, SIUE faculty and music students will provide live music and vocals. In addition, holiday refreshments will be served at each home. The holiday event proceeds go to support music scholarships.

The Edwardsville area homes will feature vocals, strings and jazz music. The hosts and hostesses are Friends of Music members.

The event offers guests to socialize, listen to music and support students in the music department. Friends of Music sponsors two other events during the year including a Jazz Supper and "An Evening in Vienna" that also feature silent auctions.

"The event seems to get better every year," said Martee Lucas, secretary of the music department. Students get to showcase their talent and visitors get to celebrate holiday cheer. Tickets are \$10 and visitors are asked to visit the homes in the list order provided on the ticket.

For more information and to obtain tickets, call Lucas in the department of music at 650-3799. Tickets with maps printed on the back are also available from Friends of Music members and at the main office of The Bank of Edwardsville.

## SIUE ORCHESTRA will perform Friday

BY MELINDA HAWKINS  
LIFESTYLES STRINGER

The SIUE Orchestra will perform at 7:30 pm Friday in the Dunham Hall theater. Tickets are \$2 for students and seniors and \$3 for general admission.

The program for the evening includes Mozart's "Symphony No. 3," Arnold's "Clarinet Concerto No. 2" and Suk's "Pohadka," or "Fairy Tale." Michael Mishra will be conducting the orchestra for this event.

"Mozart's 'Symphony No. 32,' although called a symphony, actually functions as an overture, with each of the three movements compressed into a single movement," Mishra said. "The Arnold 'Clarinet Concerto No. 2' was written for the legendary jazz clarinetist Benny Goodman and features a finale titled 'pre-Goodman Rag.' The Suk 'Fairy Tale' is an example of a late romantic Bohemian (Czech) tone poem and is based on a love story titled 'Raduz and Mahulena.'"

The orchestra is comprised of approximately 45 people, the majority of whom are music majors. The orchestra has four concerts per year, performing two each semester.

"We have been building up the orchestra for the last seven years, and it is coming along pretty well," Mishra said. "Last March we did a tour of performances in Chicago. That's the only touring we've done so far, but we definitely plan to do more in the future."

The Arnold clarinet concerto will feature a clarinet solo by James M. Hinson. Hinson is an associate professor of music and coordinator of winds, brass and percussion. He received a bachelor of music degree in performance from the University of North Carolina at Chapel Hill, a master of music from the Juilliard School and a doctorate from Florida State University.

Mishra is an associate professor and director of orchestral activities at SIUE. In addition to serving as the university orchestra's music director, Mishra teaches courses in orchestration, analysis and symphonic literature. He has conducted the Filharmonie Hradec Králové (Czech Republic) and the Silesian State Opera during their summer festivals and will conduct the Bulgarian National Radio Symphony Orchestra in Sofia next February.

Tickets are available at the Dunham Hall theater. For additional information, contact the department of music at 650-3900.



THURSDAY, DECEMBER 7, 2000 ♦

SIUE GRADUATION 2000



# Graduation 2000 Souvenir Edition

*Every ending ...  
is a new beginning*



*Congratulations  
SIUE graduates*

It's the end of an era for many as commencement ceremonies take place at 10 a.m. Saturday, Dec. 16.

The ceremonies will be in Vadalabene Center, and graduates should arrive at 9 a.m.

This semester, 480 students are participating in the ceremony.

Historical studies professor Shirley Portwood will speak at the ceremony.

Portwood has been a professor at SIUE since 1980 and has seen many students go through commencement and start their lives as professionals. She recently wrote a book about her family life in the heartland, which she will mention at commencement.

In addition to the graduates' diplomas, two special recognition awards will be given. The first will be given to the family of Rosemary Ladd-Guccione posthumously. Ladd-Guccione was an SIUE student who died of ovarian cancer earlier this semester. She would have graduated in August 2000. Her bachelor of arts degree will be presented to her family.

The second honorary degree is a doctorate of fine arts, to be presented to Ruth Slenczynska, a professor emerita of music and an artist-in-residence. The degree will be presented to recognize her contributions and dedication to SIUE and the entire field of music.

This special section is dedicated to those graduating, those honored and those who have helped the graduates along the way, in recognition of your hard work and achievement.



# College of Arts and Sciences

Abendroth, Mark MS  
 Ahlf, Mark Scott BS  
 Anderson, Matthew Herbert BM  
 Avwunudiogba, Augustine MA  
 Bauer, Andrew Daniel BS  
 Beckmann, Michael Edward BS  
 Bedard, Antoine Joseph MS  
 Bergman, Frank C BS  
 Blake, Crystal Maria BS  
 Bloomfield, Keva M BA  
 Blumberg, Fred Joseph BA  
 Blunt, Matthew BS  
 Boczek, Jennifer Ann BS  
 Bogue, Kristin Ann BA  
 Bond, Shannon James BS  
 Brackins, Emily Yvonne BS  
 Brendel, Carrie Joy BS  
 Brice, Chad Christian BA  
 Brink, Angela Renee BM  
 Brink, Julie Kathleen BLS  
 Brinkley, Georgiana Lynn BS  
 Brown, Benjamin S, IV BS  
 Brown, Erica J BS  
 Brown, Patricia Marie BS  
 Brown, Thomas Collins, Jr. BA  
 Brunner, Kelly Kathleen BLS  
 Bulkley, Jeffery Joseph BA  
 Burton, Bruce Edward, Jr. BA  
 Bush, Fritz E., III BS  
 Cameron, Brian William BA  
 Carr, Ronald William, II BM  
 Carr, Suriyya Azra BLS  
 Casper, Cari Jane BS  
 Caspersen, Carl Norman BM  
 Chen, Chun Yu MM  
 Chiu, Chu-Hui MFA  
 Clanton, Katie Ann BS  
 Clark, Patrick J MSW  
 Cloyd, Audrey Martina BS  
 Coad, Stephanie Margaret BS  
 Cole, John S BS  
 Collier, Jared Andrew BS  
 Cotton, Karie Elizabeth Sue BLS  
 Coventry, Tyler Shields BS  
 Crossin, Rick Allen BS  
 Cummins, Leigh Ann BS  
 Dallemolle, Gina Maria MA  
 Davidson, James Joseph BLS  
 Davis-Woodard, Charity Lynne MFA  
 Davis, Carla Kay BS  
 Davis, Kristine Ann MPA  
 Deming, Tricia Lee MS  
 Denison, Mark R BA  
 Diskey, Kara Jo BS  
 Dixon, Patricia Anne BLS  
 Dunaway, Andrea K MS  
 Dvorak, Joseph L, Jr. BA  
 Ebbeler, Matthew Wayne BLS  
 Eckert, Brian Michael BS  
 Ecklund, Brian Gordon BS  
 Ely, Robert C BS  
 Ervin, George Samuel, Jr. BLS  
 Eversgerd, Jayson Lee MS  
 Farley, Joshua David BS  
 Fileds, Jerome G MPA  
 Fleming, Courtney Brooke BS  
 Foppe, Patrick Glennon BS  
 Ferguson, Anita Marie BA  
 Friese, Brock William BS  
 Gabel, Brian S BS  
 Goode, Brandon T BS

Goto, Kristy Ann BS  
 Grace, Jason Michael BS  
 Gray, Bradley Allen BS  
 Greathouse, Denise Lynn BA  
 Green-Williams, Christopher T BLS  
 Grote, Trisha Erin BS  
 Guthrie, Antionette A BA  
 Haberstroh, Brooke Lindsay BS  
 Halsey, Ronald Albert BM  
 Hamilton, Andrea Jeannette BLS  
 Hamilton, Michael William BA  
 Hamlin, Jason M MS  
 Hampton, Angela Dawn BS  
 Hanabarger, Sarah J BM  
 Hannah, Keri-Gae BS

Lampman, Stacey L BA  
 Lavite, Bradley Allen BS  
 Lawrence Prude, Rutha BLS  
 Lehde, Aaron Walter BM  
 Lercher, Jodie Renee BA  
 Li, Pu MS  
 Linders, Andrea M BS  
 Liston, Victoria Ann BA  
 Lochmann, Wendy Colleen BS  
 Lohman, Jason David BS  
 Loutzenhiser, Tonni Scheffler MSW  
 Mallet, Lorna Renee MA  
 Manar, Kathryn Elaine BS  
 Marchese, Britton Michelle MS  
 Martignoni, Andrew J, Jr. BS

Raitt, Angela Marie BS  
 Rash, Richard Travis MA  
 Ratkovic, Radomir BS  
 Redmond Delano Jamil Sr. BM  
 Reif, Christina Marie BLS  
 Requarth, Stacy Lynn BS  
 Rieger, Chad Alan MS  
 Rinderer, Erin Marie BA  
 Robles, Jose Antonio BA  
 Rosenthal, Mary Jenene MS  
 Roy, Ratan Mohan MS  
 Rudolph, Diana K BLS  
 Ruger, Tracy Eugene MS  
 Rujawitz, Amy Marie BS  
 Ruyle, Jeffrey Dean BA  
 Samsel, Matthew Andrew MS  
 Sands, Barbara E MSW  
 Sankaran, Renuka Panchanathan MS  
 Scheller, Andrew Phillip BLS  
 Schneider, Christina Marie MA  
 Schroeder, Susan Renee MPA  
 Seidenstricker, Jason T BA  
 Shaffer, Chairao Rai BS  
 Shain, David C BS  
 Shannon, Laurie L BS  
 Slack, Mark Allen MA  
 Slack, Michelle D BS  
 Smith, Sandy K BA  
 Spangler, Nathan Andrew MS  
 Spooner, Timothy A BLS  
 Srivatsa, Neelakantan R MS  
 Stokes, Robert B BS  
 Suever, Rachel Kay BS  
 Sullivan, James Brian MS  
 Thelen, Carol Susan MS  
 Thornton, Linda F MPA  
 Toberman, Valorie Jean BLS  
 Treat, Timpani Diane BA  
 Trelz, Mark Frederick BA  
 Tumulty, Tawney Sue BLS  
 Upchurch, Gregory Alan MPA  
 Urfer, Mylinh Ann BA  
 Valenti, Shelli A BS  
 Vallo, Stephanie Reynolds BLS  
 Varel, Eric William BA  
 Vartanian, Garen Anthony MA  
 Vartanian, Valerie MS  
 Vermeulen, Denise E MS  
 Wagner, Kara Nicole BLS  
 Walton, Rebecca Ruth BLS  
 Weder, Elizabeth Marie BS  
 Wegner, Daniel J MS  
 Wellen, Denise Marie BS  
 Whittle, Sara Ann BS  
 Williams, Leslie BS  
 Williams, Sheri Renee BS  
 Williams, Tracy D BA  
 Williamson, Bryant S BLS  
 Wilson, Jacqueline Ellen BS  
 Wollbrinck, William Robert BS  
 Wong, Ka Chun BA  
 Woodrome, Brandon James BS  
 Worman, Jeffrey D BS  
 Ye, Tao MS  
 Young, Anne Childers BA  
 Young, Chad Russel BS  
 Zemler, Jason Matthew BS  
 Zenarosa, Rena Gayle MS  
 Zezoff, Amber Dawn BLS  
 Zheng, Weihong MS  
 Zykan, Paul Thomas MS

*To love what you do and feel that  
 it matters - how can anything be  
 more fun?*

*-Anonymous*

Harper, Stacy G BA  
 Harris, Donald James BS  
 Harris, Trixy J BA  
 Harris, Vonnetta Nichelle MPA  
 Harvey, Jason M BS  
 Harvey, Vicki Lynn BS  
 Heinemann, Annette Marie BS  
 Henderson, Susie Lynette BS  
 Heuman, Christina Marlene BLS  
 Hickerson, Gary Lee, Jr. BS  
 Hickman, Ernest Lee, Jr. BA  
 Hill, Jennifer Lynn BS  
 Hogan, Heather Leigh BA  
 Holdener, Laurie Ann MPA  
 Holder, Marcia Gaye BS  
 Holmes, Chelia L BLS  
 Holsapple, Brian Michael BA  
 Holt, Kristi Marie BS  
 Holtgrewe, Alan D BS  
 Honnoll, Donna Lynn BS  
 Hopkins, Amy Rebecca BS  
 Hopkins, James A MPA  
 Huang, Cheng-YI MFA  
 Huelsmann, Jeffery Alan BS  
 Huff, Crystal Gayle BA  
 Jackson, Jimeen Delicia Rose BA  
 Jarvis, Christi Lynn BLS  
 Jethro, Kathryn G BLS  
 Jones, Alexandria Rene BA  
 Jones, Christopher Bryan BS  
 Jones, Phillip M BLS  
 Kapper, Michaelenne Adrienne BS  
 Keegan, Laurie J MA  
 Keen, Rebeca Anne BS  
 Keenoy, Gale A BLS  
 Kiefer, Carol Gwen MM  
 Klunk, Jeffrey J MS  
 Kothari, Sneha Pradip BS  
 Krasucki, Piotr BA  
 Kult, Christopher Robert BLS  
 Kunz, Michael Andrew BS  
 Kuo, Hsiu-Ping MFA  
 Lacroix, Joseph Thomas BS  
 Lambert, Jamison R BS

Mattison, Travis BM  
 Maxeiner, Kristi Nicole BS  
 McBride, Tressa Dale BS  
 McCallum, Matthew Corbin BS  
 McGee, Amber Nicole BS  
 McKenzie, Peter John MS  
 McNeill, Jennifer Beth BS  
 Mehranfar, Mehrdad MS  
 Mehta, Dhruvin Nayan MS  
 Mendoza, Lia Marlena BS  
 Meyer, Laura C BA  
 Mezmarich, Eric Michael BS  
 Middendorf, Alicia Marie BS  
 Miller, Cassandra Camille BA  
 Moon, Sang Ick BS  
 Moore, Diana Marie BM  
 Morani, James Anthony BS  
 Morris, Jessica Lynn BA  
 Mudd, Joseph Lee MA  
 Mueller, Amy Kristine BS  
 Mueller, Ruth Ann MA  
 Mumphard, Ann L BS  
 Mwangi, Mercy Nyandia MSW  
 Navarro, Nina Ann BLS  
 Naylor, Joseph Edelen MM  
 Nelson, Judith Lynn BS  
 Nesbit, Jason P BS  
 Nicol, Matthew K BS  
 Noltkamper, Beth ann BS  
 Norman, Dawn Nicole MS  
 Norris, Jennifer Gale BS  
 Obrecht, Kimberly Audrey BA  
 Oheron, Judith L MA  
 Pandey, Ashwini Kumar MS  
 Park, Junghee Noh MA  
 Parr, Wendy Lynn BS  
 Payne, Lanitra Shenee BA  
 Piatchek, Kristi Marie BA  
 Pittman, Philip John, II MS  
 Potter, Jason Michael BA  
 Powers, Andrea Lyn BS  
 Pride, Wendy Elizabeth BLS  
 Pyeon, Sung-II BM  
 Rachell, Angela Dawn BA



# School of Engineering

Allen, Nathan Aaron BS  
Anderson, John Charles BS  
Badrinarayanan, Sriram MS  
Baer, Staci Christine BA  
Baker, Kevin M BS  
Berg, Michael David BS  
Beutel, James Robert MS  
Blanchard, Charles R, II BS  
Brahmandam, Kiran Kumar MS  
Briggs, Thomas Harry MS  
Buddhiraju, Sangameswara Kumar MS  
Chace, Daniel Holaday MS  
Chen, Ying MS  
Cheney, Arena M BS  
Chilukalaa, Venkat Ramana Rao MS  
Cleveland, Justin John BS  
Coventon, Dennis Ray, II BS  
Dakoju, Padmavalli MS  
Davis, Mark Edward MS  
Delgado, Carlos M BS  
Deshaboina, Srinivas Venkata MS  
Edwards, Carolyn Ann MS  
Evans, Neal Lloyd BS  
Flemke, Steven James BS  
Foster, Raymond Charles BS  
Frankenhoff, Nathan Richard MS  
Fuzzell, Jeffrey Joe MS  
Genti, Sivanand MS  
Goldstein, Meredith Benjamin BS  
Greider, Susan Nicole BS  
Gulipalli, Chakravarthy S MS  
Haggitt, Michael Vernon BS  
Hanna, Hani M MS

Haught, Dawn BS  
Hillen, Bruce Edward BS  
Hires, Jamie Marie BS  
Hudson, Donald Carl MS  
Hughes, Christopher Aaron MS

Manchikanti, Kalyan C MS  
Mandzukic, Edin BS  
McDill, Carissa L BS  
Mettu, Jayamanohar Reddy MS  
Meyer, Andrew Scott MS

Sakurai, Yoshihiko MS  
Schimek, Jeffrey W BS  
Schooley, Welsey M MS  
Schulte, Kenneth Michael BS  
Shen, Xue Qiang MS  
Shen, Yanfang MS  
Slothower, Deborah Ann MS  
Springer, Jennifer Lynn BS  
Sreedhara, Ramakrishna MS  
Srivatsa, Neelakantan R MS  
Stubblefield, Mark Edward BS  
Tally, Brandon Michael BS  
Tan, Yifan MS  
Taylor, Nathan Huel BS  
Trapp, Daniel Jason MS  
Vaidyanathan, Sundareswaran MS  
Vaizers, Raghavendra Pradeep MS  
Vallepalli, Satyanarayana P MS  
Vaughan, Timothy S BS  
Veeravalli, Prabhakar MS  
Venkataraman, Saravana MS  
Verdoorn, Kathryn E BS  
Voelker, Seth Michael BS  
Walter, Jill Rene BS  
Wang, Xiaoguang MS  
Welker, Scott Joseph BS  
Westphal, Matthew James MS  
Whitt, Ronald P MS  
Yang, Jingyu MS  
Yu, Ke MS  
Zhou, Yihua MS

*In creating, the only hard thing's to begin; a grass-blade's no easier to make than an oak.*

*-James Russell Lowell*

Husted, Charles W BS  
Immaneni, Madhuri MS  
Jackson, Tanya Alicia BS  
Jia, Yiming MS  
Kanakamedala, Jitendra P MS  
Kikama, Kividi BS  
Kim, Doyoung MS  
King, Russell Eugene BS  
Knipmann, John Richard MS  
Kreke, Nathan Albert MS  
Liu, Min Wen MS  
Liu, Quanxian MS  
Loyd, Sean E MS  
Lu, Xiaoping MS  
Lueking, April L BS  
Lukowski, Jeremy John BS  
Malladi, Hariprasad MS

Muren, Steve MS  
Muscarella, Ronald D BS  
Naegele, Timothy Allen MS  
Natarajan, Aswinkumar MS  
Natarajan, Mohankumar MS  
Nicholson, Eric R BS  
Patel, Amit D BS  
Perkins, Rebecca Jeanne BS  
Perrot, Jeffrey Willimam BS  
Pokorny, Jeremy Michael BS  
Prasannakumar, Raju MS  
Raghavapudi, Kiran MS  
Rajapu, Sudhakar MS  
Reed, Robert Paul, Jr BA  
Remmert, Sean Eugene BS  
Ritzel, Adam Kent BS  
Roscoe, Jason Christopher BS

# School of Nursing

Addison, Shelonda Denise BS  
Atkinson, Dawn Michele BS  
Avery, Holly Ann BS  
Bales, Isabel Perez BS  
Barclay, Misty A MS  
Brown, Gary W BS  
Bruening, Matthew James MS  
Campbell, Kristina R BS  
Caradonna, Toni Lynn BS  
Caron, Jon Michael BS  
Cass, Mia Patrice BS  
Chambers, Jaime Katrice BS  
Ciampoli, Lisa A MS  
Courier Lavelle, Kristina E BS  
Daniels, Cheryl Lynn BS  
Davis, Cheryl, Ann BS  
Donsbach, Rebekah Lyn BS  
Duncan, Sarah E BS  
Elliott, Melissa Lynn BS  
Engelman, Jennifer Lynn BS  
Faulkner, Susan P MS  
Garrison-Metzger, Patricia Leona BS  
Gerl, Stephanie Jane BS  
Glasscock, Patricia L BS  
Habeck, Brandi Kae BS  
Hamilton, Jennifer Marie BS  
Heinzmann, Ryan Lee BS

BS  
Hipsher, Patricia Lynn BS  
Howe, Teresa Dee BS  
Howell, Kimberly A MS  
Johnson, Scott Robert BS  
Jones, Rebecca Susanne BS

McDowell, Amy Lynn BS  
McGee, Jami Lea BS  
Merrell, Janet R MS  
Nealy, Nadia Marie BS  
Nelson, Susan K BS  
Niemeyer, Jackie Lynn BS

Schlueter, Claudia Livingston MS  
Schwarzlose, Crystal D BS  
Schwebke, Sonja E BS  
Silsby, Edith M BS  
Silva, Janice E BS  
Smith, Angela Rae BS  
Smith, Deborah Denise BS  
Smith, Donald Edward MS  
Standish, Stephanie K BS  
Steele, Robert Adams, Jr BS  
Steinkruger, Karen J BS  
Stewardson, Rebecca Addie BS  
Stuckey, Stacy Jean BS  
Sutton, Melissa Amanda BS  
Thirion, Kelly Anne BS  
Tate, Sandra M MS  
Thongsithavong, Vilayphone BS  
Viviano, Patricia Ann BS  
Wafford, Jamie Lynn BS  
Waggoner, Lynn Ann MS  
Warden, Jennifer Leslie BS  
Werner, Jennifer Anne BS  
White, Amber Marie BS  
Wilkins, Holly A BS  
Willms, Melissa Ann BS

*Men will spend their health getting wealth, then, gladly pay all they have earned to get health back.*

*-Anonymous*

Kehrer, Leon Frank, II BS  
Kennedy, Linda Lou BS  
Kestel, Karen Michelle BS  
Klaustermeier, Lisa Lynn MS  
Kupris, Rita Reisinger BS  
Lane, Rebecca Kathryn BS  
Lemler, Vicki Lynn MS  
McAfee, Tanessa Rose BS  
McClew, Todd M MS

Noud, Robert B MS  
Parent, Amy Marie BS  
Patel Tejal Yagnesh BS  
Picot, Renee BS  
Pinski, Thomas Michael BS  
Range, Rebecca MS  
Reynolds, Gregory Brandon BS  
Schaefer, Frances Vicari BS



# School of Education

Addotta, Andrea Michelle	BS	Fish, Natalie Laurel	BS	Kolesar, John J	BS	Rakers, Jill Nicole	BA
Albrecht, Stephanie Lyn	BS	Fitzgerald, Maureen B	MSED	Koprivica, George T	MSED	Ratchford, Benjamin David	BS
Anger, Erin Kathleen	MS	Flanigan, Heather Elizabeth	BS	Lambiotte, Myriam P	MSED	Ratermann, Michelle Marie	MSED
Ankrom, Elizabeth Faye	BS	Friesner, Theresa M	BS	Lange, Kathy Marie	BS	Ratz, Kimberley A	BS
Ansell, Jamie Lyn	BS	Frost, Pamela Ann	MSED	Lauko, Marsha Marie	BS	Reinsch, Jennifer Kelly	MSED
Bain, Heather Danielle	BS	Futrell, Pamela S	BS	Lee, Ann Marie	BS	Reiter, Amy Michele	BS
Baker, Jennifer Jo	MSED	Garner, Robin Thompson	MS	Leonard, Pamela Marie	MSED	Ringhausen, Patricia J	BS
Baker, Lauren L	MSED	Garrett, Holly Rene	BS	Linguori-Weinberg, Monique	MSED	Robb, Stacie Christine	BS
Ballard, Laura Elizabeth	ESD	Gillette, Pamela A	MS	Manwaring, Joshua Gerald	BS	Robertson, Kelli Michelle	MSED
Barbour, Kimberly Jean	BS	Goble, Jay Allen	MSED	Marciniak, Sarah Ellen	BS	Ronzio, Annemarie Leola	MS
Barnett, Melissa R	MSED	Gockel, Kevin Scott	MSED	Marsh, Verna K	MSED	Ruppert, Beth Ann	BS
Baugh, Lisa Lee	BS					Rushing, Carla Marie	MSED
Beagles, Megan Ann	BS					Santos, Candice Darlene	MSED
Belk, Destyne Donielle	BS					Schram, Morgan P	MSED
Bergdolt, Kurt P	MSED					Schreier, Kelly Anne	BS
Bergmann, Kimberly Ann	BS					Schrempp, Julia Ann	BA
Bimslager, Sina Lynette	BS					Schuenke, Lisa Leigh	MSEI
Black, Leah Beth	BS					Schuette, Linda S	MSEI
Blackmon, Jennifer Lynn	BS					Schwartz, Nicholas John	MSEI
Blanton, Dana Nicole	BS					Seely, Elizabeth Anne	MS
Bloodsworth, Susan	MSED					Shaffer, Jill A	BS
Boda, Heather L	BS					Shute, Barbara Kirby	MSEI
Bonan, Katherine Elizabeth	MA	Graves, Darren Michael	BS	Maxfield, Jason Christopher	BS	Siedle, Robin R	MSEI
Bonar, Melinda M	MA	Greco, Judith Ann	MSED	May, Debby Jean	BS	Silva, Lori D	MSEI
Bonebrake, Amber Nicole	BS	Greenwood, Kelly Charmaine	BS	Mays, Rebecca Elizabeth	BS	Smith, Stephanie Dawn	BS
Borrowman, Steven William	MSED	Gries, Jennifer Kathleen	BS	McClellan, Tamara Denise	BS	Sollberger, Sarah Amber	BS
Bottens, Tirzeh Noelle	BS	Groves, Ryan Bagby	BS	McCullough, Nicole Lynn	BS	Spencer, Jamie Lynne	BS
Bowers, Lynda Ellen	MSED	Guthrie, Karen Kay	BS	McDowell, Jennifer Christina	BS	Stedman, Kristi Leah	BS
Braasch, Joyce E	BS	Hagen, Jan Maria	MS	McFall-Calvert, Lisa	BS	Stoecklein, Alexandra Pierson	SD
Braasch, Riann Michele	BS	Hall, Beth Marie	BS	McHatton, Melanie J	BS	Stotler, Douglas Brian	MSEI
Brede, Kimberlee S	MSED	Hall, Carrie Ann	MSED	Means, Dawn E	MSED	Thomas, Lynn Marie	MSEI
Brooks, Randy Thomas, II	BS	Hamm, Dawn M	MSED	Mercurio, Tiffany Lynn	BS	Thompson, Jeanne Marie	BS
Brussatti, Tina L	BS	Hanks, Sharon Renee	BS	Metz, Gretchen Elaine	BS	Toebe, Michael Alan	BS
Bugger, Victoria Sue	MSED	Harriman, Debra Sue	MSED	Metzler, Sonya Antonia	BA	Trice, Shelia Maria	MSE
Bush, Henry Douglas	BS	Harris, William Fredrick, III	MSED	Micka, Rene M	BS	Ufert, Kary C	BS
Butler, Andrea M	BS	Harshany Brian James	MSED	Miklos, Angela Lynn	MA	Vaniseghem, Theresa M	BA
Callahan, Cindy Lee	MSED	Hawk-Frey, Melinda Beth	MSED	Mitan, Marie Clare	BS	Vaughn, Marla Marvette	BS
Cantrill, Todd Matthew	MSED	Hawkins, Deana R	MSED	Moore, Zondra N	BS	Vieceli, Jennifer Sue	MA
Carter, Rollin Jack	MSED	Herrington, Stephanie L	MSED	Morris, Sandra Kay	MSED	Vonyeast, Jennifer Martha	BS
Chatman, William Edward	MSED	Hinchey, Rachelle Lynne	BS	Mrsich, Pamela L	MSED	Wahn, Steven Michael	MA
Churchman, Alan Joseph	MSED	Hodapp, Sheri Lynn	BS	Mueth, Geri Elaine	MSED	Waldron, Maureen Ann	BS
Collier, Nancy Ann	BS	Hogg, Shelby L	MSED	Muhammad, Khalimah	BS	Waller, Sarah Elizabeth	BS
Cooper, Bill	MSED	Holbrook, Angela Elizabeth	BS	Neal, Bambi Lynne	MSED	Walthes, Scott Andrew	MSE
Cox, Jason Anthony	BS	Holbrook, Tara Ann	BS	Newell, Kendra Leigh	BS	Washington, Addie Courtney	MSE
Coyne, Elyse M	MSED	Holten, Timothy M	BS	Newton, Lynnette Susan	MSED	Wathen, Kevin M	BS
Cruise, Michelle D	MSED	Holtkamp, Gina Marie	BS	Nicholson, Kimberly M	MSED	Watson, Tim James	MSE
Cushman, Ramona Jean	MSED	Holtman-Mueller, Marci Lee	BS	Niemeyer, Gina M	BS	Weilmuenster, Tara A	BS
Czarnecki, Pamela Sue	BS	Hopkins, Scott Dell	BS	Ohlson, Stephanie Renee	BS	Wescoat, Jennifer Anne	BS
Davenport Sheenan Torri'onte	BS	Jackson, Lisa Renee	BS	Ohren, Laura Suzanne	BS	West, Sara L	BS
Decker, Eric Clifford	BS	Jackson, Thedorise Monte	MSED	Ondes, Tina Marie	BS	Weston, Benita Mischelle	BS
Dehn, Tina M	BS	James, Neil Alan	MSED	Ott, Stephanie N	BA	White, Philesa M	BS
Dehne, Katherine Ann	MSED	Jansen, Marianne Agnes	MSED	Owen, Kristina Lee	MSED	Whitworth, Schonna M	BS
Dicristofano, Laura Lynne	BS	Johnson, Connie Michelle	BS	Pace, Corey Matthew	BS	Wiehl, Lori Ann	MSI
Dinan, Matthew Thomas	BS	Johnson, Elizabeth Kathleen	BS	Payne, Vicki Carolyn	MS	Wiemers, Dawn Marie	BS
Dingwerth, Lisa Marie	BS	Johnson, Rhonda D	BS	Pembroke, Joseph Lamont	BS	Wieneke, Jeffrey A	MSI
Downer, Alan Duane	MSED	Jones, Christina Lea	BS	Phillips, Heather Nicole	BS	Williams, Chaddra Anita	BS
Duden-Gibson, Marla Lea	MSED	Jung, Richard Michael	MA	Philpott, Kerri Anne	BS	Williams, Tonya Maria	BS
Eckerman, Heather Lynn	BS	Kalaf, Suzanne Lillian	BS	Pilcher, Leigh Ann	BS	Wilson, Perry L	MSI
Eisenbarth, Steven James	BS	Kalmer, Kurt Michael	MA	Ping, Ann Elizabeth	BS	Witzig, Russell Scot	MS
Elwyn, Alexis Lee	MSED	Kapp, Cindy Lee	BS	Port, Crystal Lynne	BS	Yanick, Jennifer R	BS
Evans, Rachel Lynn	BS	Kellerman, Elizabeth M	BS	Pray, Jerry Ryan	BS	Zeidler, Wendy Lynne	BS
Faulkner, Doug Charles	MSED	Kelley, Donna J	BS	Predmore, Melissa Jo	BS	Zobrist, Shandra Marie	BS
Fellion, Regina Dawn	BA	Kendrick, Jerome Thomas	MSED	Pruett, Amy Lynn	BS	Zotti, Dena Marie	BS
Ferrarini, Jason Paul	MSED	Koelling, Shirley G	MSED	Quinn, Sarah C	BS		

*A teacher affects eternity; he  
can never tell where his influence  
stops.*

*-Henry Adams*



# School of Business

Afolabi, Christine Novelette	MBA	Graef, Stephen P	MBA	Leach, Kelly Laurel	BS	Schmidt, Randall A	BS
Alexander, Philip Richmond	MBA	Grathwohl, Jamie Lynn	BS	Lemmon, Jennifer Marie	BSA	Schoener, Robert Allen	BS
Allen, James Michael	BS	Graves, Vernice Marcia	BS	Lintker, Kevin Lee	MBA	Schreckenberg, Rodney Louis	BSA
Ammon, Sheri Lynn	MMR	Gross, Timothy Charles	BS	Lopez, Gina M	BS	Schwartz, Richard A, II	BS
Antilla, Andrea Louise	MMR	Hack, Patrick Michael	BS	Loyet, Jeffrey Paul	BS	Schwarz, Aaron R	BS
Aydin, Seda	MS	Haroun, Lubna Nabil	BS	Maag, Kathryn May	BS	Shields, Raquel Lea	BS
Basaraba, Doriann Simone	MBA	Harris, Bradley John	BS	Magee, Kristi Jo	BSA	Simaytis, Dustin B	BS
Beasley, Nicole Dawn	BS	Harvie, Keith R	BS	Majchrzak, Linda D	BSA	Sivkov, Roman Victorovich	MBA
Bennett, Lee A	BS	Haselhorst, Ryan Kyle	BS	Martin, Kelly A	BSA	Smith, Brenda L	BS
Bleier, Heather Ann	BS	Hawley, Jennifer Jean	BSA	Martin, Laurie Jean	BS	Smith, Farley Joseph	BS
Bouchard, Scott Douglas	BS	He, Wei	MMR	Matthews, Kerri Jo	BS	Stewart, Thomas L	MBA
Brown, Jeri Lynn	BSA	Headtkc, Regina Elizabeth	BSA	Mayoral, Joe Garcia, III	BS	Stoyanoff, Nicole Susan	BS
Buck, Hugh L	BS	Heflin, Ginger Lynn	BS	MCVicar, Matthew Michael	BSA	Strother, Jennifer L	BS
Cass, Chris Frederick	MS	Henderson, Charles Richard	MBA	Meisenheimer, Everett	BS	Thomas, James Arthur, Jr.	MS
Chelf, Valerie Susanne	BS					Thomas Kaleelah A	Bsa
Cherhoniak, Robert M	BS					Toennies, Andy L	BS
Cherhoniak, Robert M	BSA					Topcuoglu, Tugsan Kemal	MBA
Cochran, Terence Glen Riley	BS					Townsend, Dawn Marie	BS
Coil, Corey Stephen	BSA					Townsend, Dawn Marie	BS
Cole, Ervin Jesse, III	BS					Tubbs, Joseph Roger	BS
Collins-Custer, Angela Christine	BS					Valter, Daniel William	BS
Cook, Carrie Lynn	BS					Venable, Jennifer Lynn	BS
Cook, Michelle V	BS					Venkatraman, Aruna	MBA
Desherlia, Elaine Sue	BS					Vonder Haar, Kurt Allen	BS
Dettmers, Michael Scott	BS					Voss, Tina Marie	BS
Dewald, John Allen	MS	Henke, Cale Thomas	BS	Metcalf, Ryan M	BS	Walker, Brad Allan	MBA
Dolphy, Brian Jon	BS	Henry, Christelle	MMR	Middendorf, Benjamin James	BSA	Wang, Hsing-Hai	BS
Drainer, Sara Marie	BS	Holden, Angela Lynn	MS	Mooney, Ryan Patrick	BS	Weiss, Lora Marie	BS
Dulle, Kathryn E	BS	Horrell, Karla Jean	BS	Morell, Carmen Renee	MBA	Wesselman, Angela Dawn	BS
Ellet, Yolanda Renee	MMR	Hough, Jessica Lyn	BS	Morris, Tracy D	BS	Wiley, Karen M	BS
Eversgerd, Kurtis Patrick	BS	Iannazzo, Nicole Dannette	BS	Moss, Kimberly R	MMR	Winans, Kevin James	BS
Farmer, Wynter Christine	BSA	Izat, Akay	MBA	Mudd, Clinton James	BS	Winters, April Lee	BSA
Fenton, Jeremy W	BS	Jensen, Jason Eric	BS	Naliborski, Luke R	BS	Wiseman, Christy Gail	BS
Fitzhugh, Ronald Lee	BS	Kabugua, Andrew Ngura	BS	Neuf, Jason Russell	BS	Wortman, Evan Anthony	BSA
Fossland, Guy D	BS	Keen, Rebecca Anne	BS	Odom, Brenda Kaye	BS	Wright, Timothy L	BS
Frerichs, Valerie Elaine	BS	Kermen, Ibrahim Cahit Cem	BS	Ohlendorf, Kristy Marie	BS	Yamamoto, Yoko	BSA
Frey, Lynn Marie	BS	Klotz, Ryan W	BS	Oneal, Audrea Precious A	BS	Ybarra, Elena J	BSA
Fritschle, Jonathan Edward	BS	Knebel, Shawnee Janene	BS	Piper, Douglas E	BSA	Yocks, David Micheal	MBA
Fritz, Delsie Irene	BS	Kohlbrecher, Kevin Daniel	BS	Rakers, Misty M	BS	Zeller, Courtney Anne	BS
Gall, Chad Ryan	BSA	Komnick, Kelly Kay	BS	Roady, Bryan Dale	BS	Zhang, Rui	BS
Giacomini, Anna Marie	BS	Kramer, James Ernest	BS	Routh, Michael A	BS	Zhu, Haijun	MMR
Gibbons, Kenneth Daniel	MBA	Kratzer, Daniel L	BSA	Rupp, Matthew D	BS		
Goodman, James Andrew	BS	Lacroix, Joseph Thomas	BS	Sanchez, Brian Joseph	BS		
Goodman, Joel David	MMR	Lang, Margie Marie	BS	Scheuring, Martin Frank	BS		

*Life is a coin. You can spend it any way you wish, but you can spend it only once.*

*—Anonymous*

*Anyone who stops learning is old, whether at twenty or eighty. Anyone who keeps learning stays young. The greatest thing in life is to keep your mind young.*

*—Henry Ford*



# Longtime prof gets honorary degree

BY MAUREEN HAGRMAN  
CO- SPECIAL EDITOR

Ruth Slenczynska, a professor emerita of music and an artist-in-residence, will receive an honorary doctorate of fine arts, after serving SIUE for more than 35 years.

Slenczynska was nominated to receive the award at this year's commencement ceremonies on Saturday, Dec. 16, and the proposal was approved by the Southern Illinois University board of trustees.

Slenczynska is an artist-in-residence, the only one in SIUE's history. According to music professor Allan Ho, an artist-in-residence is an international or prominent figure in the arts, who is not only a concert performer and artist, but also serves as a teacher for a significant amount of time.

Slenczynska arrived at SIUE in 1963. She began teaching serious and advanced piano students. After arriving, Slenczynska said her number of students kept growing and classes kept being added. In addition to teaching, Slenczynska said she spent many hours a day practicing and continued touring around the world.

In 1988, after 24 years of teaching, Slenczynska retired from the SIUE music faculty. Since retiring, she has continued performing publicly, teaching private lessons and teaching at the university part

time.

Throughout her career, Slenczynska has performed in more than 3,000 recitals and concerts. Critics call her "the first lady of the keyboard" and "the world's greatest woman pianist." Her credits include performing with the Boston Pops and the New York Philharmonic Orchestra and also being the first Western artist to perform with the China State Symphony Orchestra. In the United States, she was recognized by President Ronald Reagan for being the first American woman to celebrate 50 years on the concert stage.

Slenczynska's career began at a young age. Her first public recital was at the age of 4, and since then, she has performed in many countries throughout the world. At the age of 16, she entered the University of California at Berkeley, where she earned a degree in psychology.

In addition to teaching and touring, Slenczynska was also awarded the Golden Cross of Merit from Poland, the country of her ancestry. Slenczynska said the award is the highest honor Poland can bestow. The award is a piece of jewelry in the shape of a cross, and the award is usually presented to men.

The doctorate of fine arts will be the second Slenczynska has received. She received a doctorate of fine arts 23 years

ago from the University of Pennsylvania. But, she said this time, she will be able to relax and enjoy the honor.

"I can sit and enjoy it," Slenczynska said. "The first time I received one, I had to rush off to concerts. This time, I can stop and enjoy the ceremony. And I have nowhere to rush off to immediately afterwards. It will be much nicer to relax."

James Klenke, executive assistant to the chancellor, said the honorary title doctor of fine arts is usually given to someone who is significantly accomplished in fine arts. "The title is given to honor the contribution," Klenke said. "It is a cumulative award to recognize the accomplishments and contributions she has made to the university and to the music field."

But Slenczynska's contributions to the field of music are far from over. She



photo courtesy www.siue.edu/MUSIC

Ruth Slenczynska

continues to teach private lessons, and in 1999 she released her 23rd recording. She is still performing, with upcoming concerts in the area and across the country.



**Congratulations Graduates**  
From **Hollywood ★ Tan**

**3 FREE TANS**  
With Purchase of Lotion  
**\$25 or More**

Must Present Coupon  
One Coupon Per Customer  
Not Valid With Other Specials or Discounts  
Expires: 12/31/2000

**MERRY CHRISTMAS**  
Call Today: 656-TANN (8266) or 667-4140

**Cassens**  
is the place to  
**RENT!**

*Congratulations to all Graduates*

**Cassens**  
EDWARDSVILLE/GLEN CARBON  
CHRYSLER • DODGE • PLYMOUTH  
Call Rental 692-7386  
3333 S. HWY 159 • Glen Carbon  
2 Miles North of I-270

## Ladd-Guccione remembered

BY MAUREEN HAGRMAN  
CO- SPECIAL EDITOR

Special recognition will be given to Rosemary Ladd-Guccione of Wood River during commencement ceremonies.

Ladd-Guccione was a mass communications major who died of ovarian cancer earlier this semester at 51.

She would have graduated in August 2000.

Her degree, a bachelor of arts, will be presented to her family during the commencement.

"It would mean a lot to her and it will mean a lot to her family for her to receive her degree posthumously," said Shirley Lodes, a secretary in Disabilities Support Services who worked with Ladd-Guccione.

Ladd-Guccione was involved in many aspects of campus life at SIUE. She worked in Disability Support Services as a volunteer and as a student worker in the summer and fall 1999. She worked at the Alestle as a copy editor in spring 2000.

"Rosemary was such an alive person. She was so in love with life," Lodes said. "It just seemed so unfair."

Michael Montgomery, the adviser of the Alestle, also had fond memories of Ladd-Guccione.

"Rosemary was a joy to have in the office. She truly believed in the power of the press and its watchdog role," Montgomery said. "She wanted to investigate wrongdoing and ensure that all people got a fair shake."

At the commencement, she will be honored and her degree will be presented to her family.

"She was such an alive person that her spirit will live on," Lodes said.



photo courtesy www.siue.edu/DSS  
Rosemary Ladd-Guccione

**MOJO'S MUSIC**

(Formerly B&G Music)  
Is Now Open in Downtown Edwardsville  
142 N. Main St.

**655-1600**  
•Great selection of Acoustic Guitars

**Taylor Ovation Cort Ibanez Seagull**

•PEAVEY and Yorkville Sound Equipment  
•PEAVEY Ibanez & Cort Electric Guitars  
•Strings, Sticks, Picks, Tuners, Reeds & Sheet Music

**Sales • Rentals • Lessons • Repairs**  
Ask For the SIUE Student Discount



# Teacher to talk at commencement

BY ELIZABETH GRIMSLEY  
CO- SPECIAL EDITOR

The publication of a book in combination with 20 years of service at SIUE have earned Shirley Portwood, professor of historical studies, the opportunity to address graduates at the Dec. 16 commencement.

"I first found myself at SIUE as an undergrad," Portwood said.

She added that her original interest was in teaching at the secondary level, but a combination of interest in the subject of history and the history department itself helped her change her mind.

"Somewhere along the line, though I decided I really liked history," she said. "So much so, in fact, that I decided to pursue a master's degree."

Portwood continued her education and received her doctorate in history while teaching at St. Louis Community College at Forest Park. Her areas of specialization are African American history and

women's history, but she also teaches survey and general history courses.

In 1980 Portwood was hired at SIUE as an adjunct professor before becoming a full-time professor in 1981.

Portwood's book, "Tell Us a Story, an African American Family in the Heartland," will be the basis of her speech at the SIUE commencement ceremony. It centers on her family and her life growing up in the Heartland.

"Many people, black and white, from small towns or larger ones have said to me that they find something in the book that they can relate to," Portwood said.

The publication of the book in June and its degree of popularity are, Portwood believes, the reason she was asked to address the graduating class.

Portwood said she feels the students and the excitement they experience in learning are the most enjoyable aspects of her job.



Shirley Portwood

photo courtesy www.siue.edu/HISTORY

**Don't forget to keep up with  
everything that's going on at SIUE.  
Visit [www.siue.edu/ALSETLE](http://www.siue.edu/ALSETLE)**

**Make Holiday  
Shopping Sweeter...**



**With a Checking Choices Account and  
a MagicCheck ATM/Debit Card from TheBANK**

With our Checking Choices, you'll enjoy lower minimum balances  
and reduced or waived monthly fees. From a basic account to one that  
 earns interest, you've got a choice that fits your needs perfectly.

Get a MagicCheck ATM/Debit Card FREE with your  
Checking Choices Account. Use it anywhere MasterCard® is accepted...  
it makes holiday shopping sweeter.

**TheBANK  
of Edwardsville**

The People You Know & Trust  
Member FDIC

Main Office • 618-4257  
Montclair Center • 618-4257  
In-Store Center • Edwardsville State To Serve  
Online Center • www.4thebank.com



[www.4thebank.com](http://www.4thebank.com)

*Congratulations  
Graduates*

.....  
*The  
Morris University Center  
wishes to Congratulate  
all the  
December Graduates  
and Continued Success  
with your  
Future Endeavors.*  
.....



The Alestle staff  
would like  
to congratulate  
all the graduates.  
Good luck  
in all that you do.

**JACOBS**  
EXPLORE EMPLOYMENT OPPORTUNITIES AT OUR:  
**OPEN HOUSE**  
THURSDAY—DECEMBER 21, 2000 / 3:00PM - 4:30PM  
AT OUR ST. LOUIS OFFICE / 400 SOUTH 4TH STREET



LIGHT REFRESHMENTS WILL BE SERVED

COME SEE ONE OF THE WORLD'S BEST DESIGN AND CONSTRUCTION ORGANIZATIONS  
WITH PROFESSIONALS IN MORE THAN 300 DISCIPLINES IN 70 OFFICES WORLDWIDE  
WORKING TOGETHER TO DELIVER RESULTS.

ARCHITECTURE • ENGINEERING • CONSTRUCTION MANAGEMENT • PLANNING • INTERIOR DESIGN

RSVP BY DECEMBER 18, 2000  
(314) 552-8200

**JE**

# **=WICK'S=**

3043 GODFREY RD. GODFREY, IL. (618)466-2112

## **Every Monday Night**

25¢ Bud Light & Miller Light

\$2 Pitchers

25¢ Hot Wings

## **Thursday**

\$1.25 Bottles

***No Cover Charge***

## **Friday & Saturday**

Live Music & a DJ





# Tips to survive finals week

BROOKE HEITZ  
LIFESTYLES STRINGER

OK, it's time to face the music. The semester is quickly coming to a close. Finals are right around the corner. It's finally hitting home that time is getting short and projects are beginning to close in. Time to really hit the books. Panic sets in and everyone is now in trouble. The echo of rapid heartbeats in the classrooms begins to pound through the halls.

The time has come to buckle down and get serious. Playtime has come to an abrupt stop as it's finally time to open up books for the first time this semester.

Does this sound familiar? Don't worry. There are many students out there in the same boat. Time seems to escape one and all as the semester comes to an end.

So what can one do to help get through this time of sheer panic? Students are bombarded with stress and pressure throughout the last few weeks of the semester. Time management is key for anyone looking to make it through the finals week. By learning to keep a good balance between homework and a little rest and relaxation, survival is possible.

Instructional Services offers tips for good study habits.

Terri Reed, head of the study skills department and services, stressed the importance of using the whole semester as a review for the final.

"Stress and anxiety should not be a problem for most students who have been preparing for their final throughout the entire semester," Reed said. "You should have been reviewing your notes every

night after classes and then anxiety shouldn't be a problem."

But let's face it. Not everyone has been preparing over the past several months for these last few weeks. Some tips offered by Reed are fairly simple to follow and easy to understand.

1. Time management and scheduling is important during this time crunch. Reed also added the idea of using a time calendar. "It's a good idea to write down the finals schedule on a calendar along with the times that you will study," Reed said.

2. Do not confuse reviewing with cramming. The results of cramming are usually what one expects - failure.

3. Get a good night's sleep and a good breakfast. Get at least seven hours of sleep. Try to stay away from acidic or greasy foods.

4. Remember that it is OK and natural to feel some concern and anxiety over tests. This will help you focus on the task that lies ahead.

5. To help prepare for the test, make sure you have an attitude of confidence as you go into the test. Try to leave all anger at home and focus on the test. Visualization is a good strategy before the testing date. Imagining doing well on the test is a very effective way to boost self-esteem and confidence



before the test.

6. Arrive at the classroom about five minutes prior to the testing time. Be sure not to arrive too early because this could cause test anxiety.

7. When beginning the test, be sure to look over the entire test and answer the easier questions first. Also weigh the questions. Do the ones that are worth more points first to help boost your grade. If doing an essay, try to make an outline.

8. Look for key words throughout the test.

9. Change the answers only if you are sure they are wrong.

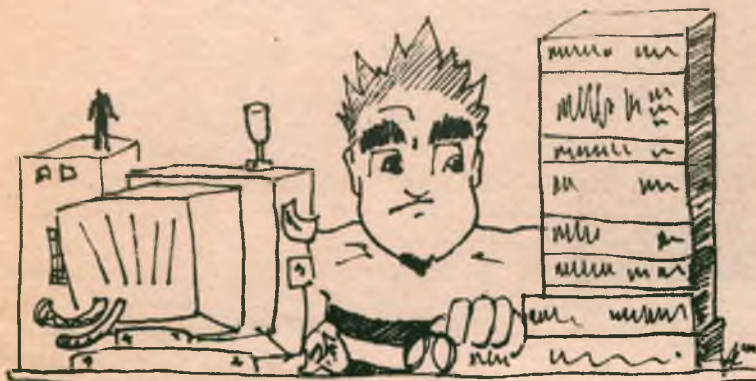
What happens if test anxiety sets in? Reed recommends relaxing a little. "Make sure you sit back and take a deep breath," Reed said. "Relax and try to refocus on the question. Look over the whole test and try to take some deep breaths to relax your body." Other ways to alleviate test anxiety are getting sufficient rest prior to the test, developing a positive attitude and taking practice tests or answering review questions.

While taking the test, be sure

to notice questions that might be linked to another question. "Some of the answers might be right there on the test already, but you just have to find them," Reed said. "It's also a good idea to use all the time allotted. Go over the test after you are finished, but trust your instincts on the questions. Only change them if you are sure they are wrong. Never leave any answers blank, especially if you are taking a multiple-choice test."

With these steps, getting through finals won't be a breeze, but it might be a little simpler and more organized. Remember to focus and visualize doing well on the test. The most important aspect of test taking is relaxing and being prepared. This will help ensure that grade needed for the class.

If anyone would like more information on test anxiety or testing strategies, stop by Instructional Services in Room 1405 in Peck Hall. You can also call Reed or Connie Dake at 650-2056.



Illustrations by Andrew Lehman/Alestle

## LIFE AFTER CLASS CALENDAR OF EVENTS

### THURSDAY, DECEMBER 7

**Holiday Craft Fair**  
8:00a.m. - 7:00p.m.  
Goshen Lounge, Morris University Center

**Soup for Finals**  
11:00a.m. - 1:00p.m., Religious Center

**Java - N - Jazz**  
6:00p.m.  
Cougar Den  
Morris University Center

**General Assembly**  
6:30p.m.  
Morris University Center

**United Campus Ministry Spiritual Growth Group**  
7:00p.m. - 8:00 p.m.  
Religious Center

**Must See TV**  
7:00p.m. - 10:00p.m.  
Cougar Den, Morris University Center

**Study Break**  
7:00p.m.  
Goshen Lounge, Morris University Center

**Orchestra Concert**  
7:30p.m.  
Dunham Hall Theater

### FRIDAY, DECEMBER 8

**Catholic Mass**  
12:00p.m., Religious Center

**Study Break**  
7:00p.m.  
Goshen Lounge, Morris University Center

**Orchestra Concert**  
7:30p.m.  
Dunham Hall Theater  
\$2 Students/\$3 General

### SATURDAY, DECEMBER 9

**Season of the Child - "The Gift of the Magi"**  
2:00p.m. and 7:00p.m.  
Dunham Hall Theater  
\$5 General Admission

### SUNDAY, DECEMBER 10

**Human Rights Day**

**Catholic Mass/Social**  
10:30a.m. & 8:30p.m.  
Religious Center

**Volunteer Project - Christmas Baskets**  
East St. Louis, IL  
Student Leadership Development Program and Volunteer Services

### MONDAY, DECEMBER 11

**Final Exams**

**Volunteer Project - Christmas Baskets**  
East St. Louis, IL  
Student Leadership Development Program and Volunteer Services

**Soup for Finals**  
11:00a.m. - 1:00p.m.  
Religious Center

### TUESDAY, DECEMBER 12

**Final Exams**

**Volunteer Project - Christmas Baskets**  
East St. Louis, IL  
Student Leadership Development Program and Volunteer Services

**Soup for Finals**  
11:00a.m. - 1:00p.m.  
Religious Center

### WEDNESDAY, DECEMBER 13

**Final Exams**

**Volunteer Project - Christmas Baskets**  
East St. Louis, IL  
Student Leadership Development Program and Volunteer Services

**Soup for Finals**  
11:00a.m. - 1:00p.m.  
Religious Center

**Catholic Fellowship Dinner & Prayer**  
6:30p.m.  
Religious Center

### THURSDAY, DECEMBER 14

**Final Exams**

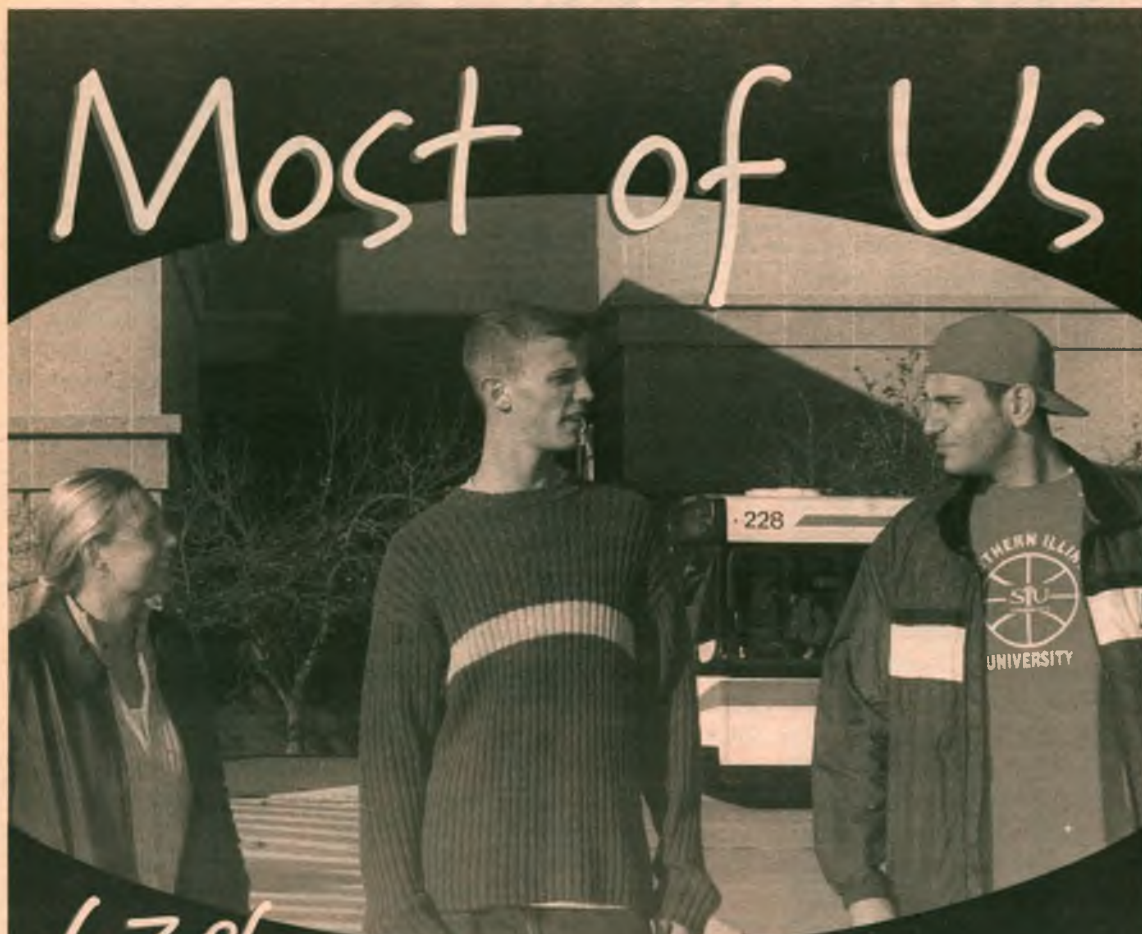
**Volunteer Project - Christmas Baskets**  
East St. Louis, IL  
Student Leadership Development Program and Volunteer Services

**Soup for Finals**  
11:00a.m. - 1:00p.m.  
Religious Center

**United Campus Ministry - Spiritual Growth Group**  
7:00p.m. - 9:00p.m.  
Religious Center

**For more information call 650-5555**





# Most of Us

**63% are making healthy choices**  
Most SIUE students drink 0-3 drinks per week.  
(1,032 STUDENTS SURVEYED)

1 DRINK= 12 OZ. BEER, 5 OZ. WINE, 1 OZ. LIQUOR REFERENCE: CORE ALCOHOL AND DRUG SURVEY, SIUE, APRIL 2000  
For More Information Contact: THE SIUE WELLNESS CENTER (618) 650-3873 [wellness@siue.edu](mailto:wellness@siue.edu)

**SIUE** SOUTHERN ILLINOIS UNIVERSITY EDWARDSVILLE

**It's more than a College Ring...  
It's a Career Essential.**

**Dec. 13 - 14 10 a.m. - 3 p.m.  
Outside Bookstore**



**ARTCARVED**

**RINGS NOW  
STARTING AT  
\$199**

[www.artcarved.com/college](http://www.artcarved.com/college)

## The Freshman Experience

BY ANDREW LEHMAN  
GRAPHICS

As I have said, I am a commuter.

Being one of those commuters makes it difficult to meet new people on campus. At least, that's what I have discovered.

I have made some new friends, but for the most part I feel like I'm clinging to old relationships, as if my old friends are my only link to the outside world because they live on campus and know where all the parties are. There isn't anything wrong with my old friends by any means, but I think I need to broaden my horizons.

So since I'm kind of a shy guy and an obsessive-compulsive, which is a deadly combination by the way, I decided there was something wrong with me. I have not made a flock of new friends because of a personality flaw and like any good overly analytical person, I took an online personality test.

I'll give you a second to stop laughing. OK. No really, stop.

I discovered something quite interesting when I got the results. I'm who I always thought I was.

Let's try that again.

The test told me I was idealistic and gave the appearance that all was right with the world though I was shy. True. But on the inside was a mass of raging turmoil. I never really thought of it like that, but OK. The test found I have a strong sense of "idealism derived from a strong personal morality and conceive the world as an ethical, honorable place." I agree.

Now we're getting somewhere. The test said that I was the prince of a fairy tale, the king's champion or defender of the faith. Basically it told me I had a hero complex where I would sacrifice my feelings and own well-being for the happiness of others. I told my friend this and he welcomed me into the hero's club. Here I thought I was already a member.

The test went on to tell me that my personality made up barely 1 percent of the population and because of that, I feel more isolated than the rest of humanity. Right on. It also told me I had a preoccupation with good and evil and that I was always on the lookout for the evil in me. Sure. Then it said when I believe I have succumbed to the evil in me, I perform "acts of self-sacrifice in atonement for these impure temptations." The test knows me better than I know me.

Impossible, you say. I think not. None of us wishes to face the truth about ourselves and when we read it or hear it from our friends, it shocks us. We wonder if we are really like that. The fact is we are and the sooner we can move past it and accept ourselves, the sooner we'll be able to accept others and their differences.

I thought about making copies of the results to hand out to every new person I meet and say to them, "Here you go. This is me and if you can't handle my 'raging inner turmoil' then I'll see you later. Oh, can I have that copy back?"

Now that would just be too weird.

**THANK YOU**  
TO THE  
**866 STUDENTS**  
WHO ATTENDED  
**PACK THE GYM**  
ON NOVEMBER 30th AND TO  
**PAPA JOHN'S**  
**PIZZA**

FOR FEEDING THEM

**THE NEXT PACK THE GYM  
IS JANUARY 18, 2001  
watch the ALESTLE for details**



On Dec. 7, 1985, Auburn tailback Bo Jackson beats Iowa quarterback Chuck Long by only 45 points in the closest balloting for the Heisman Trophy in its 51-year history.

# SPORTS

Fri 8	Sat 9	Sun 10
		Vikings 3:15 p.m. KTVI-FOX 2
	B'Hawks 7 p.m. WB 11	at B'Hawks 7 p.m. WB 11

TENNIS - CROSS COUNTRY - GOLF - SOCCER - VOLLEYBALL

## Lady Cougars fall to McKendree

*SIUE struggles from the field in loss to Bearcats*

BY KUMAR BHOOSHAN  
ASSISTANT SPORTS EDITOR



Sheri McWhirter/Alestle

**SIUE's Misi Clark (right) drives to the basket in a game earlier this season.**

If games were played on paper, Tuesday's game should have been a SIUE victory for sure.

The Lady Cougars met the Bearcats of McKendree College for a non-conference matchup Tuesday.

In a game in which neither team shot more than 40 percent from the field, the Bearcats downed the Lady Cougars 59-56.

Senior guard Misi Clark once again led SIUE in scoring, going 8 for 20 from the field for a game-high 19 points.

Clark was also able to pull down seven rebounds and go perfect from the free-throw line.

Back court teammate Jessica Robert finished the evening with 14 points and four assists.

Crystal Gladson totaled eight points and eight rebounds for the Lady Cougars as well.

Bench scoring has been a key factor in all the SIUE victories this year, but on this night only one player off the bench was able to get into the box scores; Megan Grizzle scored four points in 25 minutes of play for the Lady Cougars.

For the first time this year, SIUE was out-rebounded by its opponents 40-44.

"I think we had a lot of good

looks at the basket," Head Coach Wendy Hedberg said. "We just didn't shoot the ball well and lacked intensity."

The Bearcats' Amy Anderson had the best showing for McKendree. She totaled 18 points, going 7 for 13 from the field and 4 for 4 from the free-throw line.

Six-foot-two-inch sophomore Autumn Dow scored 14 points for the Bearcats.

In what should have been an exciting matchup of the Clark sisters, McKendree's Jacque Clark only played 10 minutes in

the game and scored only four points.

"Overall I was disappointed in our defensive effort," Hedberg said. "We just didn't want to get after it, and turnovers killed us as well."

Misi Clark may have won the scoring battle as the big sister was predicted to do, but in the end the younger sister won the war.

The loss puts SIUE at 3-2 overall and 1-1 in the Great Lakes Valley Conference.

On Saturday, the Lady Cougars will try to ground the

high-flying Lady Screaming Eagles of the University of Southern Indiana.

Southern Indiana is second in the GLVC with a record of 2-0 in conference and 4-0 overall.

The Lady Screaming Eagles are coming off an impressive win over conference opponent St. Joseph's College 104-71.

"This would be a huge win for us to get us back on track," Hedberg said. "Each year they are good and we always have tough games against one another."

see WOMEN'S, page 11

## Cougar basketball team two in a row this weekend

BY KELI KEENER  
SPORTS STRINGER

After a 77-72 win last Saturday over Indiana University Purdue University-Fort Wayne, the men's basketball team will take its 2-3 record to Evansville, Ind., Saturday.

The Cougars are 1-1 in conference play and are set to battle another conference foe in the University of Southern Indiana.

"The win against IUPU-Fort Wayne was a tremendous one for us," coach Jack Margenthaler said. "It came at the right time of the season."

"We didn't play extremely well last Saturday, but we got

the win. It will help us to prepare for our next opponent," Margenthaler said.

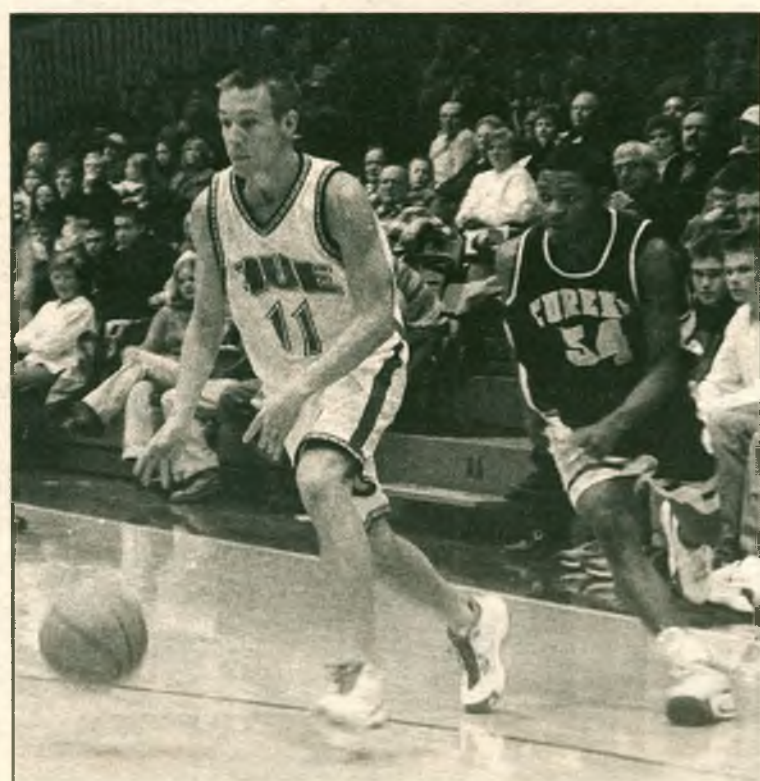
The Screaming Eagles are 4-0 overall and 2-0 in the Great Lakes Valley Conference.

Southern Indiana has handed losses to Huntington College, Missouri Southern State College, IUPU-Fort Wayne and St. Joseph's College.

Southern Indiana is sitting in the fourth spot in the conference and is the No. 3-rated Division II team in the country.

Southern Indiana loses five important seniors, three of them starters, from last year's team, which was 25-6 overall.

see MEN'S, page 11



Sheri McWhirter/Alestle

**SIUE freshman guard Tyler Krauss (left) and the Cougars hope to continue their good fortunes against Southern Indiana.**



I'm outta here.

This is the last issue of the Alestle for the fall semester. And, it the last issue for me as sports editor.

I am handing over the reins to my assistant, Kumar Bhooshan, for the remainder of the year.

He is a very capable writer and things should continue to run smoothly.

There is one thing that has been brought up over the course of the semester that I would like to put some closure on.

The prospect of a football team at SIUE.

Good idea.

If we had a team here, maybe people would actually come to the games.

I've attended McKendree College football games and the atmosphere there is unbelievable.

As your drive up to the stadium, there are tailgate parties galore, just like at a St. Louis Rams game.

The stands are filled to capacity and McKendree even have a band play at halftime.

SIUE is bigger and better than McKendree and to have a team here makes complete sense.

I don't think recruitment would be an issue since there are so many local teams and not all of the high school players can go to McKendree or the University of Illinois.

The grumbling I've heard from students is that they don't want to pay more for a football team.

Get over it.

At SIUE, there are so many miscellaneous expenses that another \$50 per person isn't going to kill anyone.

SIUE is one of the cheapest institutions to attend in the state, and I for one would pay a little bit extra to help the program.

In an interview earlier this semester, SIUE Athletic Director Cindy Jones said the concern at this point for SIUE was to bolster the programs we have now.

Save your money.

SIUE is fine where it is. In each of our sports, our teams are not the "doormats" of the conference.

see BIG PIC, page 11



[www.siue.edu/ALESTLE/](http://www.siue.edu/ALESTLE/)

**Hollywood ★ Tan**

Gift Certificates  
&  
Gift Baskets  
Now Available

Great For Last Minute Gift Ideas  
Call Today: 656-TANN (8266) or 667-4140

Education

The gateway to

educational  
excellence

The St. Louis Public School District fosters a learning environment that encourages high achievement from our students and prepares them for today's - and tomorrow's - technological society.

Recent College Grad? Experienced teacher?  
Looking for a career change?  
Join us now for the city-wide:

St. Louis Public Schools  
**HIRING FAIR**  
Saturday, December 9<sup>th</sup>, 2000  
10:00 a.m. - 3:00 p.m.  
Gateway Schools Complex  
1200 N. Jefferson St. ■ St. Louis, MO 63106

On-the-spot hiring for:  
■ Certified Teachers  
All subject areas. Recent college grads welcome.  
■ Counselors ■ Speech Therapists  
■ Psych Examiners ■ Librarians  
■ Substitute Teachers

We offer an excellent salary and benefits package.

Certified teachers must be able to obtain certification in the State of Missouri. Substitute teachers must have at least sixty (60) college credit hours. Priorities for interviews will be given to applicants with transcripts and proof of certification where applicable. On-the-spot interviews and job offers! EOE



## Kingston & Chateau Apartments

No Security Deposit

6-9 month lease at 1 year rate

1 & 2 Bedrooms ready immediately

some utilities pd. On site laundry facilities.

Manicured lawns. 24 hr maintenance.

Beautiful Swimming pool w/ side deck

15-20 min. from SIUE

159 South to 140 West into Bethalto

**377-3000**

## SIUE hockey seeks first win over the weekend at Wash U.

BY AMY GRANT  
SPORTS STRINGER

Although its record of 0-6-1 may not reflect it yet, the SIUE hockey team has many positive things going for it this season.

Scott Cloin is leading the team with six points in as many games. He has recorded five goals and one assist, as well as having a plus/minus rating of plus two.

Several forwards are close behind Cloin in the standings with four points each.

Another standout player for the Cougars has been goaltender Todd Bartoszkiewicz.

He has played the majority of the games and has a .859 save percentage.

Last season, Bartoszkiewicz ranked first in the league in shots faced at

1,148, averaging more than 63 shots a game. Despite back and shoulder injuries, he was in goal for 18 of the season's 19 games and finished with a .874 save percentage.

Bartoszkiewicz shares time in the net with freshman Patrick Day.

Day is a graduate of McCluer North High School where he was the starting goaltender.

This season, he has played 72 minutes and has a 3.85 goals against average.

The Cougars are playing Washington University (2-9-0) this Saturday. SIUE is coming off a 5-5 tie last weekend against Wheaton College.

"We are finally molding as a team," Bartoszkiewicz said. "It's unfortunate that it took us until halfway through the season, but we didn't have a dominant veteran core like

some of the powerhouses in our league to carry the team until the freshmen came around."

Although SIUE lost its first match against Wash U. earlier this season, the game proved to be close. Bryan Raymer and Brad Maggio each scored goals to give SIUE the lead after two periods, but the Bears countered two late goals in the third and won the game 3-2.

The Cougars expect to improve their record in the second half of the season.

"We've held our own against the two top teams in the league, Palmer (College) and Bradley (University), and our best hockey is yet to come," Bartoszkiewicz said. "Look for us to come out with a vengeance after the semester break."

Saturday's game against Wash U. will be at 3 p.m. at East Alton Ice Arena.

## Margenthaler hopes his ninth season as head coach will be a winning one

*Coach turned down playing in the NBA to finish his education and become a coach*

BY BRANDEN PETERSON  
SPORTS REPORTER

SIUE men's head basketball coach Jack Margenthaler has a rich academic and athletic history.

Margenthaler expects big things from his players, on and off the court.



**Jack Margenthaler**

When Margenthaler became a college head coach in 1977, he began to stress the importance of academics.

Over the course of his college coaching career more than 75 percent of his recruited athletes have graduated.

"I'm very pleased with the number of players I have had graduated, it speaks well for our program," Margenthaler said. "We all want to win, but there should be more to the game than winning."

Margenthaler was a two-

time All-State basketball player and a four-year standout at Pinckneyville High School.

He was recruited by the University of Houston under then-head coach Guy Lewis.

Margenthaler started every game in his final three seasons and was the team's Most Valuable Player in 1965 before graduating

After his college career, the National Basketball Association came knocking on his door.

He was drafted by the Philadelphia 76ers, but turned them down to continue his academics.

Margenthaler finished his college career with a bachelor's degree in physical education and science in 1965 and a masters degree in 1967 at Houston.

"Academics was the main reason for turning down the NBA, that and the fact I wanted to work for my coach Guy Lewis," Margenthaler said.

Margenthaler was named boys basketball coach at LaSalle-Peru High in 1968.

He spent six seasons

LaSalle-Peru, winning five conference championships, five regional tournaments, one sectional tournament, and one super-sectional.

He was the North Central region's Coach of the Year from 1968 to 1973.

Margenthaler made his move into college coaching in 1974 when he was hired as an assistant coach at Drake University in Iowa.

After three seasons at Drake, Margenthaler moved on to become the head coach at Western Illinois University.

As the head coach at WIU, he was named Mid-Continent Conference Coach of the Year in 1981 and 1982.

In 1991, Margenthaler brought his ideals of education first to SIUE, when he was hired as the men's head coach.

So far in his career, Margenthaler has a mark of 98-112.

The Cougars next game will be at 7:30 p.m. Saturday against the University of Southern Indiana in Evansville, Ind.

Know your world.

Read the Alestle



## BIG PIC

from page 9

If any money needs to be spent, it needs to go to some of the sports that don't get a lot of money.

Our soccer and basketball teams are fine where they are, but I think sports such as track, cross country and wrestling deserve to have more scholarships to build their programs. And our hockey club team certainly deserves some support.

OK, I'll jump off of my soapbox now.

As this is the final edition, there are a few people in the SIUE athletic program I would like to thank.

First of all, I would like to thank all of the SIUE coaching staff members for making themselves available on a regular

basis.

It would be impossible to put out a section twice a week without the cooperation and kindness of all the coaches.

I would also like to thank all the SIUE players.

Without the players, there would be nothing to write about.

Last and certainly not least, I would like to thank SIUE's Sports Information Director Eric Hess.

Hess logs countless hours every week making sure the media get much-needed information on SIUE sports.

And that as they say is that.

*Rick Crossin was the sports editor of the Alestle and could have been reached by e-mail at alestle\_sports@hotmail.com.*

## MEN'S

from page 9

The team took second in the GLVC at 17-3 and second in the National Collegiate Athletic Association II Great Lakes Regional.

The Screaming Eagles, ranked fourth in the preseason by Preview Sports College Basketball and Division II Bulletin, have made it to the regional finals six times in the last eight seasons.

Returning players for Southern Indiana are Drake Roberts, Derrick Lyons, Kimon Green and Matt Carter.

Lyons, a 6-3 senior guard, was named second team All-Great Lakes Region and All-GLVC last season.

Green, a 6-7 senior forward/center, was named to the GLVC All-Tournament team after turning 29 points, 13 rebounds and six blocks in three games.

He led the GLVC and was ranked 18th nationally with 2.3

blocks per contest. He also led the conference by hitting 66.9 percent from the field.

Carter, a 6-2 junior guard, returns to the lineup after a season-ending knee injury in 1999-2000.

"Southern Indiana is playing really well," Margenthaler said. "It is our third conference game of the season, and we have to face a team that is ranked nationally."

Thus far, junior forward Tim Rose leads the Cougars in scoring with 78 points, 15.6 points per game.

Freshman guard Wes Pickering comes in second with 58 points, 11.6 points per game.

Sophomore guard Garrett Thomas leads SIUE in assists with 18 while senior forward Nick Hartwig leads in rebounds with 35, seven points per game.

Saturday's game is at 7:30 p.m. in Evansville, Ind.

## WOMEN'S

from page 9

Southern Indiana will come into the game with four of coach Rick Stein's starters averaging in double digits.

"We may shake up our lineup a little against Southern Indiana," Hedberg said. "Maybe we can get our players more focused."

Freshman Jessica Stuckman has led the way, averaging 24.2 points per game this year.

Senior Elizabeth Pruitt is averaging 16.5 points per game and is also the team's leading rebounder with nearly 10 per game.

Senior's Natalie Glaser and Casey Hughes are the other two Lady Screaming Eagles averaging double digits. Glaser averages 14.2 points per game and Hughes averages just more than 10 points per game.

The Lady Cougars will have their work cut out for them facing a Lady Screaming Eagle team that has outscored opponents by a 44.5-point margin in their first four games.

Southern Indiana will also be bringing a 13.4 turnover margin to the table. Opponents turn the ball over an average of 30.5 times a game. Southern Indiana limits itself to just 16.8 turnovers per game.

"There are two things we need to focus on playing this team," Hedberg said. "The first is playing better defense than we have in the last two games, the other is taking care of the ball."

Southern Indiana has also out-rebounded its opponents in each of their four games.

Game time is at 5:15 p.m. Saturday in Evansville, Ind.

## Textbook Service Fall 2000 Extended Hours

Reminds you that the last day to return  
textbooks Without penalty is  
Saturday, December 16, 2000

Remember, if you do not return your books on time, it  
could cost you real \$\$\$\$\$!!

Purchase with penalty required  
after 6:30 p.m. Monday, Dec. 18

Extended Hours Fall 2000 Return Schedule  
( Edwardsville Campus)

Dec.9	Sat.	9am-5pm
Dec.11,12,13,14	Mon.-Thur.	8am-8pm
Dec.15	Fri.	8am-6pm
Dec. 16	Sat.	8am-5pm



### Reminder:

Textbooks may be returned at any time during  
the semester.

Phone 650-3020, 3021, 3397

## EAGLE WATCH

AT PERE MARQUETTE  
STATE PARK



650-B-FIT (2348)  
www.siu.edu/CREC

Saturday January 20, 2001  
6am - 2:30pm

RSVP by Jan 17, 2001

**Free for Students**

**\$5 Faculty/ Staff/ Alumni**

**\$8 Guests**

Trip departs from  
Vadalabene Center parking lot

The wintering of the American Bald Eagle on the  
bluffs of Southern Illinois is quite a show this  
time of year. The tour will include auto/walking  
exploration of Pere Marquette State Park. Bring  
good walking shoes (it may get muddy), binocu-  
lars, camera, and water. You can bring your lunch  
or join us for lunch at a restaurant in Grafton.

SIUE Wellness Program • Campus Recreation, Student Affairs • 650-B-FIT



## CAMPUS RECREATION

Look us up on the NET at <http://www.siu.edu/CREC> • Campus Recreation, Student Affairs



# CLASSIFIEDS

◆ PAGE 12

A L E X T L E

THURSDAY, DECEMBER 7, 2000 ◆

## HELP WANTED

You can make a difference and help an infertile couple reach their dream of becoming parents. If you are between the ages of 21 & 33, and have a good family health history, then you may qualify \$2,500 stipend. Call (800) 780-7437. All ethnicities welcome. Help a couple go from infertility to family. 12/7/00

**Wanted: Male Math Tutor** for high school junior. 656-1739 after 7p.m. 12/7/00

**Postnet.com** is seeking Campus Representatives to assist in the development of marketing strategies and implementation. Must have knowledge of campus life, good communication skills and an ability to work independently. Flexible hours. Credit/wage. Send resume to: Pat Toro, 400 South Fourth St., Ste 1200, St. Louis, MO 63102, e-mail: ptoro@postnet.com 12/7/00

**Need extra holiday cash?** Honeybaked ham is hiring for the holidays. Illinois and Missouri. Contact Maggie at 632-4933 or apply in person. 12/7/00

**BSBoogies** "formally Caddy's" hiring bartender, waitress, cook apply in person at 2082 Vadalabene Drive. Maryville. 12/7/00

## FOR SALE

**Sleeper Sofa** for Sale \$20 Call 656-7277 10am-8pm or leave message. 12/7/00

**Used Books** at bargain prices. Good Buy Bookshop, Lovejoy Library Room 0012, Wednesdays and Thursdays 11a.m. to 3p.m. Sponsored by Friends of Lovejoy Library. 12/7/00

**1987 Cavalier 4 door.** Good in town vehicle. \$550. 692-9694 12/7/00

**Full bookcase headboard** \$10.00 - full bedframe \$10.00. Clarinet \$350.00. 288-9741 12/7/00

**For sale:** Many MCAT review books and all AMCAS publications start preparing now! 346-9909 12/7/00

**1994 SC2 Saturn,** 119,000 highway miles, good condition, all maintenance receipts available, \$4,999. Call 651-1386 daytime or 251-4521 evening. 12/7/00

*"The force will be with you... always."*  
--Obi-Wan Kenobi

## RESUME



**Busy Bee  
Copy Service**  
(618) 656-7155

311 North Main Street  
Edwardsville, IL 62025

## AUTO INSURANCE

- ✓ LOWEST RATES
- ✓ NO ONE REFUSED
- ✓ CREDIT CARDS OK
- ✓ FAST PHONE QUOTES
- ✓ LOW DOWN PAYMENTS

**GREG SCHMIDT AGENCY**  
188 North Main, Edwardsville  
**656-9886**

## FOR RENT

**Union Street Apartments** 2 bedroom, fully equipped kitchen, w/d and cable hookup. 127 East Union Street. 656-1624. 12/7/00

## PERSONALS

**Attention GREEKS!!!** Fraternity and Sorority merchandise is now available at the Morris University Center Bookstore. More Arriving Daily. 12/7/00

**Smooth,** I'm really gonna miss you next semester. You'd better visit often. --Jedi. 12/7/00

**University Lottery Birthdate:** September 16. If this is your birthdate, bring ID to the University Restaurant to receive a free All-You-Care-to-Eat Salad Bar. 12/7/00

**Silkey,** What's the word, hummingbird? Would you miss me if I flew the coop? --Jedi. 12/7/00

## MISCELLANEOUS

**#1 Spring Break 2001** Mexico, Jamaica, Florida, and S. Padre. Reliable TWA flights. Book by Oct. 1 & receive 14 FREE meals & 28hrs FREE parties! 1-800 SURFS UP www.studentexpress. 1/9/00

**Money making opportunities** 1996 Belmont Mobile Home 14x70 3 bedroom, 2 bath, deck, shed and appliances stay. For more information call 462-9440 12/7/00

**Roommate Wanted:** Private Bed. Clean Quiet E'ville Area. 332.50/mo includes cable and trash plus 1/2 power and water. Call Michelle 217-827-1772 12/7/00

## Health Insurance for Students

...The good stuff--major companies you know and trust!

**\$15 docs' office visit copay**  
**\$2.5 million max. benefits**  
5000 area docs and 30 area hospitals in network  
age 18-24, monthly rate  
male \$53 / female \$74

Greg **Schmidt** Agency  
**656-9086**

**Cassens**  
is the place to  
**RENT!**

**Cars  
Trucks  
Vans**

**Dodge DURANGO**  
4x4 SUV's

Chrysler Products - Well Equipped  
"A Size To Fit Your Needs"

**Cassens**  
EDWARDSVILLE/GLEN CARBON  
CHRYSLER • DODGE • PLYMOUTH  
Call Rental **692-7386**  
3333 S. HWY 159 • Glen Carbon  
2 Miles North Of I-270

## Placing a classified ad

### Frequency Rates

(For billing purposes, five (5) words equal one line). All classifieds and personals must be paid in full prior to publication.

1 run: \$1.00/line 5 runs: \$.90/line  
(2 line minimum) 20 runs: \$.8/line  
3 runs: \$.95/line Personals: \$.50

### Deadlines

Tuesday Publication: Noon Friday  
Thursday Publication: Noon Tuesday

### Adjustments

Please read your ad on the first day it appears. If you cannot find your ad or discover an error in your ad, call 650-3528 or come into the office. Positively no allowance made for errors after the first insertion of advertisement. No allowance of correction will be made without a receipt.

### Placing Ads

To place a classified ad, come to the Office of Student Publications, located in the UC, Rm. 2022, and fill out a classifieds form.

**Office Hours: Monday thru Friday: 8am - 4:30pm**

**650-3528**

**GRANNY'S**  
**Tue: \$1 Jose Maragaritas & DJ**  
**Wed: \$2 U Call it - House Music**  
**Thur: 50 Cent Longnecks!**  
*This Fri & Sat - DJ Dance Party!*  
**FREE COVER WITH YOUR COLLEGE ID!**  
**New Management!**  
**Welcome To Mikes World...**  
(Hint...Mike Loves To Buy Drinks!)

**Hwy 159 On The Border of  
Glen Carbon & Edwardsville, 659-0506**

**Live From Collinsville...  
Its, Saturday Night!**  
**18 & UP!**  
ST. LOUIS'S #1 MODERN ROCK  
PARTY COVER BAND:  
**Throne**  
WITH SPECIAL GUEST:  
**Raising Richard Jordan**  
**50 CENT LONGNECKS!**  
Club Axis - Exit 11 Off Hwy 55  
**618-345-2582**

*Holiday Dining*  
in the  
*University Restaurant*



### Extended Buffet

**Sunday, December 10th**  
10:30 am - 2:00 pm  
A Delightful Feast.

### Commencement Brunch

**Saturday, December 16th**  
11:00 am - 2:30 pm  
Reservations are required  
for this by calling 650-3040

The University Restaurant is located on the second level of the Morris University Center, SIUE and open to everyone.



**Idlewood Estates**  
Apartments & Townhomes

Just minutes from SIUE!

Ask About Our College Special

2 Bedroom Townhomes (with W/D Hookups)

1 & 2 Bedroom Garden Apartments

24-hour Emergency Maintenance • Some Utilities Included • Small Pets OK

Call for Prices & Information

**345-8589**