



INSIDE

SPORTS.....11

THE
LADY COUGARS
WENT FOR SIX
IN A ROW
AGAINST THE
LADY NORSE
ON SATURDAY.

EDITORIAL3

CUPS - NOW YOU
SEEM THEM.
NOW YOU DON'T.

WORDS OF WISDOM

"PEOPLE ONLY SEE
WHAT THEY ARE
PREPARED
TO SEE."

- RALPH WALDO
EMERSON

LIFESTYLES.....7

IT'S 'SUMMERTIME'
AT THE
ST. LOUIS ART
MUSEUM.



THE ALESTLE

◆ TUESDAY, FEBRUARY 1, 2000

Southern Illinois University Edwardsville

Vol. 52, No. 35 ◆



Ben Smith/Alestle

What's missing from this picture? Students are upset about food service's decision to eliminate medium cups from the fountain soda menu. The matter was also discussed at Friday's student senate meeting.

Canceled cups cause student stir

BY BRIAN WALLHEIMER
NEWS REPORTER

Pick a cup, any cup, as long as you don't want a medium.

Restaurants in the Center Court area of the Morris University Center will no longer be serving medium fountain soda.

A notice on the soda machines near Chick-fil-A stated, "Due to confusion and waste caused by three different drink and lid sizes, we will soon be discontinuing the 24-oz size cup."

According to Food Service Administrator Francine Polich, students were picking up the wrong lid for a medium cup and contaminating the larger and smaller lids. As a result, the lids and many cups were being thrown away and money was being wasted.

University Center Director Mary Robinson said, "The tops were so near the next size, people were wasting a lot of cup covers."

Polich said that more medium cups and lids were being wasted than any other size.

"Our concern was for the cost," Polich said.

see CUPS, page 2

Senate: no cash for laughs

BY BRIAN WALLHEIMER
NEWS REPORTER

Comedy is no laughing matter at SIUE if you're late in asking for the money to put on a show.

Student senators rejected a request for \$8,379 from Delta Sigma Theta Sorority Inc. to produce the "Comedy Show Extravaganza" on Feb. 26.

At their meeting Friday, four senators voted for the comedy show, five voted against, one voted present and one abstained.

Before the vote, President Heather Mueller had to call for order when Delta Sigma Theta member Flora Carson continued to press her point about the worthiness of the show, although the funding request was five weeks late.

"I'm asking you as student senators to see if my program's worthy enough to be held," Carson said. Delta Sigma Theta members argued that though the request was late, the show is beneficial to students.

Finance Board Chair Phil

Gersman argued against senate approval.

"If we do this and pass this, it opens the door for other requests that are truant," he said. Gersman said he made a mistake by letting the request go through the finance board Jan. 21.

Gersman said he was not opposed to the program itself but was reluctant to approve the request because it was five weeks late. "I am not above the funding manual. No one here is," he said.

see SENATE, page 5

University wants lawsuit dismissed

ALESTLE STAFF REPORT

SIU lawyers filed a motion Jan. 21 to dismiss a suit brought in December by three SIUC faculty members.

The suit claims Gov. George Ryan's reappointment of SIU board of trustees Chairman A.D. VanMeter Jr. gave the board one too many Republicans and thus violated state law.

The suit also sought the restoration of former SIUC Chancellor Jo Ann Argersinger.

According to an SIU press release, SIU General Counsel Peter Ruger said the faculty members who filed the suit failed to show direct and immediate harm caused to them.

"Their claims are speculative and based on what they hope might have happened," Ruger said.

The plaintiffs, Bary Malik, Joan Friedenberg and John Gregory, are seeking to selectively overturn decisions made by the board.

Ruger said a court could not grant the type of relief the three faculty members are seeking.

"They don't want the court to disturb their board-approved pay raises, but do want to reverse board actions they don't like," Ruger said. "That is simply nonsense, and we are confident the court will agree with us."

According to the press release, the Carbondale

professors have failed to show that VanMeter's presence on the board was a deciding factor in the decisions they are seeking to reverse.

"Simply put, even if Mr. VanMeter's vote was not counted, more than a majority of the board voted to terminate Dr. Argersinger's chancellorship," Ruger said.

SIU lawyers said they believe the suit was filed in the wrong court. Suits seeking to control the actions of the state of Illinois should be filed in the Illinois Court of Claims, not circuit court, the lawyers said.

No court date has been set for arguments of the university's motion.

www.siu.edu/ALESTLE

CERTIFIED NURSE AIDS

Responsible for daily patient care. Requires current state certification and high school diploma. The ideal candidate must have a passion for caring for others and experience with the elderly.

Sunbridge Care & Rehabilitation for Edwardsville
401 St. Mary Drive
Edwardsville, IL 62025
618.692.1330 Fax: 618.692.9478
www.sunh.com



Arkansas Repertory Theatre in . . .

Thursday & Friday,
February 3 & 4
SIUE Dunham Hall Theater,
7:30 p.m.

(618) 650-2320
www.siu.edu/ARTS_ISSUES

The year is 1938, the place is Chicago, and the music is arguably the best to come out of America. Featuring songs by the legendary Bessie Smith, Alberta Hunter, Duke Ellington, and many others.

ARTS
& ISSUES

SIU
EDWARDSVILLE

SOUTHERN ILLINOIS UNIVERSITY EDWARDSVILLE



EVERY SAGA
HAS A BEGINNING

Fireside Flicks Presents this Wednesday



STAR WARS

EPISODE I

THE PHANTOM MENACE.

Opapi Lounge • 8:00 pm

FREE ADMISSION & SNACKS

Celebrate black heritage on campus

BY ANTHONY WATT
NEWS REPORTER

SIUE's third annual celebration of Black History Month is under way.

Darron Cannon, assistant director of human resources at SIUE, is the chairman of the Black History Month Planning Committee.

"We are trying to focus on cultural events and local talent," he said. "For instance, on Jan. 23, we had the opening for Phillip Hampton's art exhibit. We had many members of the Alpha Kappa Alpha sorority and about 20 other students helping at the event."

Hampton is an emeritus professor in the School of Art and Design. "Shapes Wrought From My Mind" is an exhibition of his artwork and will be on display in the Morris University Center Art Gallery until Feb. 25.

The Goshen Lounge will be the site of the third annual African Cultural Bazaar from 10

a.m. to 6 p.m. Tuesday and Wednesday.

Josephine Barnes, assistant director of the Office of Research and Projects, organized the bazaar.

She said students will be able to purchase Afrocentric wares from approximately 20 vendors, including Topaz Books from East St. Louis, Creative Hands from Washington, D.C., and Jewelry by Gentry from Cape Girardeau. Each vendor will donate one product to be raffled during both days of the bazaar.

WSIE's LaVerne Holliday will host the beginning of the bazaar and broadcast her show, "Jazz in the A.M.," live in the Goshen Lounge from 11 a.m. to 1 p.m. both days.

The SIUE Jazz Band will also perform Tuesday from 11:30 a.m. to 1 p.m.

On Tuesday, Feb. 8, students can try out their singing voices with Motown Karaoke from 7 to 10 p.m. in the Cougar Den of the

Morris University Center.

The Goshen Lounge will again be the center of attention from noon to 1 p.m. on Wednesday, Feb. 9, when the SIUE Gospel Choir performs.

The second annual Black Theater Workshop will begin at 7:30 p.m. Wednesday through Friday, Feb. 9 through 11, in SIUE's James F. Metcalf Theater.

The St. Louis Black Repertory Company will perform "A New Show" from 7 to 10 p.m. Friday, Feb. 18, in the Meridian Ballroom, Morris University Center. Tickets for the performance may be purchased at Union Station.

The events of this year's celebration of black history are sponsored by the Black History Month Planning Committee, Kimmel Leadership Center and the Office of the Vice Chancellor of Student Affairs.

For information about events later this month, contact the Kimmel Leadership at 650-2686.

CUPS

from page 1

Many students are upset about the imminent doom of their cups.

"Nobody wants a small drink. Nobody wants a large drink all the time. You want a medium," freshman Steve Arisman said.

Some students felt that getting rid of the small cup was the way to go.

"If you look around the cafeteria, you see most of this cup size (medium) and not the others," freshman Koree Claxton said. "I just think they should get rid of the small instead of these. The small was too small and the large was too big," she said.

Polich said the decision to remove the medium cups was not

made in haste. "We've wrestled with this longer than just the past semester," she said.

Though Food Services has been mulling over the decision for some time, Polich said that it saw no other alternative to getting rid of the medium cup size.

She said labeling the lids differently in the past had not helped, and felt it would not help in the future.

As it is now, the small fountain soda is 79 cents, a medium is 89 cents and a large is 99 cents. Some students said if the medium disappears, the prices should change.

"I think they should make the large the medium price,"

sophomore Nicole Cummings said.

Freshman Aaron Bense said he gets a medium every day. "Change the price of the large to this price," he said.

Polich said the prices will stay the same even though there are no more medium-size cups.

Students noticed cups running out as early as Thursday. Lids were gone by Friday. As soon as the cups are gone there will be no more.

Senior Chuck Riley became annoyed after finding the medium cups were being abandoned. "They need to get a dispensing system that puts the lids right above the cups. How hard is that?" he asked.

Campus Scanner

Student Leadership Development Program:

"Effective Meetings" is the SLDP module topic at 2 p.m. Tuesday in the faculty club of the Morris University Center. "Community Service Opportunities and Responsibilities" is the module topic for 6:30 p.m. in the Religious Center. For more information, call the Kimmel Leadership Center at 650-2686.

Comedy: Watch Spike Rizzo at 8 p.m. Tuesday in Cougar Den. Rizzo will perform a comedy routine as part of the University Center Board's "Just for Laughs" series.

Literature: SIUE English professor Eugene B. Redmond will lead a literary and cultural workshop from 6:30 to 8:30 p.m. Tuesday in Room 2085 of East St. Louis Community College Center, 601 J.R. Thompson Drive. For more information, call 650-3991.

Blood drive: Phi Kappa Psi Fraternity will sponsor an American Red Cross blood drive from 10 a.m. to 3 p.m. Tuesday and Wednesday in the St. Clair Room, Morris University Center.

Current events: Ronald Glossop, emeritus professor in philosophical studies, will lead the first program in the "Great Decisions 2000" series from 10:30 to 11:45 a.m. Wednesday in the Mississippi Room, Morris University Center. "Defining U.S. Interests in the World" is the topic. Fees are \$2 for individual sessions or \$14 for the entire eight-week

series. For more information, call the office of continuing education at 650-3210.

IMAGE: Learn how to prepare a resume in this IMAGE workshop from 11 a.m. to 12:15 p.m. Wednesday in Founders Hall, Room 2407.

Soup & Substance: Participate in a dialogue on affirmative action from 12 to 1 p.m. Wednesday in the Faculty Club of the Morris University Center. Free soup and attendance prizes will be provided.

Homecoming: Vote for homecoming king and queen from 10 a.m. to 7 p.m. Wednesday and Thursday in the Goshen Lounge, Morris University Center.

Theater: Tickets are still available for "Blues in the Night" at 7:30 p.m. Thursday and Friday at Dunham Hall Theater. The Arkansas Repertory Theater will perform the Tony-nominated Broadway production as an installment in the SIUE Arts and Issues series. For ticket information, call 650-5815.

Noncredit activity: "Acoustic Guitar" will be offered from 10:30 a.m. to noon Saturdays, Feb. 5 to March 11, in a location to be announced. The fee is \$49. For more information, call the Office of Continuing Education at 650-3210.

Math help: Tutoring is available in mathematics from 3 to 5 p.m. Sundays in Woodland Hall Learning Resource Center.

EDITORIAL:

EDITOR IN CHIEF:

R. John Klimut

NEWS EDITOR:

Danielle Stern

ASSISTANT NEWS EDITOR:

Andy Lehman

ASSIGNMENT EDITOR:

Sheri McWhirter

LIFESTYLES EDITOR:

Bridget Brave

ASSISTANT LIFESTYLES EDITOR:

Tobie DePauw

TECHNOLOGY EDITOR:

Vacant

ASSISTANT TECHNOLOGY

EDITOR:

Vacant

SPORTS EDITOR:

Tony Ammann

ASSISTANT SPORTS EDITOR:

Rick Crossin

CHIEF COPY EDITOR:

Sarah K. Hall

COPY EDITORS:

Madhuri Immaneni

Rosemary Ladd

Melissa Stein

PHOTO EDITOR:

Cornell Gordon

GRAPHICS/PRODUCTION:

GRAPHICS ASSISTANTS:

Jennifer Green

Brian Knobloch

WEBMASTER:

James Lentz

ADVERTISING:

Katie Clanton

CIRCULATION:

Troy Dinkheller

Scott Garkie

ALESTLE ADVISER:

MIKE MONTGOMERY

GRAPHICS SUPERVISOR:

MIKE GENOVESE

OFFICE MANAGER:

MARY ALLISON

THE FIRST COPY OF EACH
ALESTLE IS FREE OF CHARGE.
EACH ADDITIONAL COPY COSTS
25 CENTS.

LETTERS TO THE EDITOR POLICY:

The editors, staff and publishers of the Alestle believe in the free exchange of ideas, concerns and opinions and will publish as many letters to the editor as possible. Letters may be turned in at the Alestle office located in the Morris University Center, Room 2022 or via e-mail at alestle_editor@hotmail.com. All hard-copy letters should be typed and double-spaced. All letters should be no longer than 500 words. Please include your phone number, signature (or name, if using e-mail) and Social Security number.

We reserve the right to edit letters for grammar and content. However, great care will be taken to ensure that the message of the letter is not lost or altered.

Letters to the editor will not be printed anonymously except under extreme circumstances.

The Alestle is a member of the Illinois College Press Association, the Associated Collegiate Press and UWIRE.

The name Alestle is an acronym derived from the names of the three campus locations of SIUE: Alton, East St. Louis and Edwardsville.

The Alestle is published on Tuesdays and Thursdays during fall and spring semesters, and on Wednesdays during summer semesters. For more information, call (618) 650-3528.

Have a comment?

Let us know!

Send us an e-mail:

alestle_editor@hotmail.com

The Alestle

Campus Box 1167

Edwardsville, Ill. 62026-1167

Mulder and Scully needed to find medium cups



I think it's a conspiracy.

It seems the administration at this university has only one goal and that is to make life as hard as possible. Case in point: the seemingly quick and heavy-handed decision to eradicate the vile and wasteful 24-ounce cups from the food court. It wasn't enough to turn the computer labs into a chaotic free-for-all with the introduction of printing cards, nor was it enough to rename the buildings or renumber the parking lots. No, just to make sure life was just that much more a

hassle, SIUE food services decided to do away with the 24 ounce cup size.

The reason for getting rid of the 24-ounce cup? A sign posted on the soda fountains last week explained it all, "Due to confusion and waste caused by three different drink and lid sizes, we will soon be discontinuing the 24-oz. size cup."

Sure, the idea was good. Apparently, there was a lot of waste from unused lids that had been contaminated when people picked up the wrong size and thus costing the university a great deal of money. So, getting rid of the problem - the 24-ounce cup - seems to be a good idea. That is until you think about it.

Food services eliminated the medium size, the one size that appealed to the most people. If a cup had to be eliminated it seems it would have been better to eliminate either the small size or the large size. Now, customers are forced to drink too little or drink too much.

If people choose the large cup, it won't surprise me if soda boxes - the boxes that hold the syrup - start to run dry more often. There is already a problem with this in the back court. The Mr. Pibb fountain, in the machine on the right side, is always out of syrup. I can

guarantee syrup costs more than cup lids.

I don't mind the fact that food services is trying to save money. If there is one thing this university could do better it's saving money. Let's face it, nearly \$30,000 a month for an interim president puts a strain on things.

I think I may have figured out why food services did away with the 24-ounce cups.

It's all part of the SIU conspiracy.

If you stop to think about it, the plan is obvious. I'll bet the board of trustees has sent word down through the system to eliminate seemingly small and innocent items, like the 24-ounce cup. If a bunch of little things disappear, fewer people will notice and less stink will be raised.

And little things can add up in big ways.

If you figure even half of the campus used medium cups once a day that would total some 5,000 or so cups a week. Let's put the cost at 1 cent per cup and half a cent per lid, the figure works out to roughly \$1,100 a month. It's not quite the entire \$30,000 but it's a good chunk of the \$5,000 interim Frank E. Horton gets to put toward retirement. Plus, you only need to come up with 29 other little changes to pay the entire \$30,000 bill and in a system as big as SIU that should be no trouble at all.

So the next time you go to reach for a medium size and realize it's not available, remember you're simply allowing SIU to afford an interim president.

Have a nice lunch.

John Klimut
Editor in Chief

Commentary

The University Daily faces battle with administration

(U-WIRE) AUSTIN, Texas — For 100 years, The Daily Texan has relentlessly challenged institutional censorship. Throughout our history, those battles were often fought against the board of regents, university presidents or the state legislature. Nonetheless, our predecessors remained steadfast in their commitment to protect the independence of our paper and our profession. Today, we renew that commitment.

It is with difficulty that we watch events unfold this week in Lubbock, where The University Daily, Texas Tech's independent student newspaper, could soon come under the control of the university's journalism department.

In many ways, The University Daily mirrors The Daily Texan in structure and stature. Like The Texan, The UD has enjoyed editorial freedom and institutional independence from the university that it covers. In short, UD staffers don't have to put up with an administrator or professor breathing down their necks about what is "appropriate" or "tasteful."

If the Tech administration has its way, all of that could change very soon. Under a new proposal, the newsroom would be run by a journalism professor who would direct news coverage and judge which stories are newsworthy. The newspaper would exclude all students who aren't journalism majors and likely lose final control of its editorial content.

The proposition is one the town's local daily, The Lubbock Avalanche-Journal, has been pushing for years. Avalanche-Journal Editor Randy Sanders strongly endorsed the arrangement, saying it would ensure that student journalists are more properly trained in the basics of news writing and design.

That may be so, but they'll learn little about journalistic ethics. It's amazing that a professional journalist couldn't see the inherent conflict of interest involved when a newspaper is controlled by the university it supposedly covers.

And as for the alleged "lack of training," The Texan consistently turns out the nation's finest journalists with no such interference from the university. There's no

reason to think that The UD can't do the same.

And although these events are taking place hundreds of miles away in Lubbock, they could set a dangerous precedent for college newspapers here and across the state. For that reason, the Texan Editorial Board pledges its full support to the editors and staff of The University Daily as they combat this latest threat to the freedom of the press.

Staff Editorial
Daily Texan
University of Texas - Austin

(Ed. Note: The college press is under attack. This editorial illustrates only one of the many ways college newspapers are threatened by university administrations.

Thankfully the Alestle has not yet had to face this problem. I hope the situation remains as such and I urge the administration of the SIU system to publically and officially reaffirm its commitment to the First Amendment and its support of the student press within its system.

As a public institution, SIU's support of the First Amendment is not only vital and expected, it is mandated by law.)



I AM ONLY KEEPING HIM FOR SIX MONTHS.

SIUE slashes phone rates

ALESTLE STAFF REPORT

SIUE's Telecommunication Services will be reducing its rates for all long-distance phone calls to 10 cents per minute.

Telecommunication Services is also lowering its international rates to selected countries. The reduced rates for long-distance and international calls will go in to effect Monday.

Ameritech has recently raised the directory assistance fee to \$1.40 per call, and that charge is being passed to customers as of Tuesday. Students can go to various free directory assistance Web pages to escape the increased rates, such as <http://www.555-1212.com>.

Students living in residence halls and in renovated Cougar

Village apartments can now have individual telephone lines, voice mail and caller ID for \$36 per semester. These personal telephone lines also have direct Internet connections, which allows for a faster connection.

SIUE customized prepaid calling cards can now be purchased at the University Bookstore in the Morris University Center in the amounts of \$5, \$10 and \$20.

For further information concerning long-distance and international calling rates, directory assistance rates, personal telephone lines and calling cards, contact telecommunication services at 650-3373 or at their Web site at <http://www.siu.edu/TELECOM/>.

'At' no loss to the university

BY BRIAN WHITTLE
NEWS STRINGER

The "at" in Southern Illinois University Edwardsville has been missing for a few years.

The use of "at" began to disappear when the logo of the school was changed two-and-a-half years ago, according to Gregory Myers, director of University Graphics and Publications.

"Most people prefer the name without the 'at'," Myers said.

Myers said he was not sure who directed the removal of the word "at" but said the removal is in the process of being formally approved.

Sharon Holmes, executive secretary for the board of trustees, said, "Nothing has been formally presented to the board regarding the removal of the word 'at'."

"This is just a practice that has been developed," said Scott Kaiser, assistant to the president for corporate and community relations. "At one time there was a review of the school's public image, and I think the removal was one of the suggestions."

Philip Violette, assistant professor of English, said that deleting the "at" makes the title grammatically incorrect. "The appropriate form is to use an 'at' or hyphen before Edwardsville," he said.

Although proper grammar been ignored in the use of the university's name, "It has become an unofficial way of displaying the name in a cleaner format," Kaiser said.

High-tech classroom presented to business school



The renovated "The BANK of Edwardsville Classroom," Alumni Hall Room 2401, opened at a ribbon-cutting ceremony Wednesday afternoon. The BANK's \$100,000 donation to the School of Business gave the room the latest audio-visual equipment and Internet connections.

Ben Smith/Alestle

Students and staff donate money to charities

BY CHANELLE SMITH
NEWS STRINGER

For many years SIUE faculty and staff have given back to the community through the SIUE Charitable Fund Drive.

Every year university employees participate in the drive to benefit more than 15 major organizations. Staff members donated nearly \$40,000 last year to charities such as the American Cancer Society and Earth Share.

Janet Hunsche and Mark Bacus have been coordinators for the fund since 1993. They organize it through the State Employees Combined Appeal program. SECA gives faculty the

opportunity to contribute to charities through payroll deductions or cash gifts.

The payroll deduction supports a year-round program, instead of trying to raise money through fund-raising events.

"We've tried to keep it low-key and stick with a soft-touch approach, which is easier for employees because it is annually," Bacus said.

The once-a-year combined drive keeps overhead costs low and gives money directly to individuals in need.

The program has been efficient and not only lets the employees make a difference, but lets them make the decisions as to where their money is going.

Hunsche said that faculty can choose from local organizations such as Illinois Special Olympics or programs overseas, such as the International Service Agencies.

The drive also invites students to get involved in the program, but not through contributions. Bacus said a few student organizations could participate by helping with the mailing forms and information packets sent to the staff.

For more information on the SIUE Charitable Fund Drive, SECA, contact Bacus at 650-2328 or Hunsche at 650-2190.

Ethanol plant may get money

BY ANTHONY WATT
NEWS REPORTER

U.S. Rep. John Shimkus has enlisted the help of a fellow House Republican to get needed money for the ethanol research plant on campus.

House Speaker Dennis Hastert was on the SIUE campus earlier last month and pledged his support for \$14 million needed to make the plant a reality.

"Hastert is from Yorkville (near Chicago), Shimkus said, "and very familiar with agricultural needs in Illinois. The Illinois delegation will use his support to try to get as much money as possible for the project."

Illinois has set aside \$14 million of the \$20 million needed for the project, but it requires the remaining money before construction begins.

"Last year we were successful in authorizing the project for ethanol research," Shimkus said. "It did not specify where the ethanol plant would be, but that was why it was important to have Speaker Hastert at the campus to show where we think the plant should go."

The plant will be built on University Park between North Research Drive and Illinois Route 157.

College
credits
for
taxpayers.
Up to \$1500



Bone up on the tax breaks that can help you foot the bills for higher education.

The HOPE Credit can cut your federal tax up to \$1500 per undergraduate student per year. Applies only to the first two years of college or other post-secondary courses.

The Lifetime Learning Credit can save you up to \$1000 a year in taxes for graduate, professional or undergraduate study. You cannot claim both credits for the same person in the same year.

With an Education IRA, you can contribute up to \$500 a year per child until the child turns 18.

You can also withdraw funds from many other IRA accounts without being charged an early-withdrawal tax, if you use the funds to pay qualified expenses of higher education.

For details on how to qualify for these tax advantages, see your 1999 tax booklet.

Or check the IRS Web site: www.irs.gov

The Internal Revenue Service Working to put service first

SENATE
from page 1

Carson had no comment for the Alestle but told the senate: "Thank you senators. We will be seeing you again."

In other action at Friday's meeting, Housing Director Michael Schultz fielded questions and comments about Cougar Village renovations.

Several senators complained about structural problems with their apartments and what they said was a lack of concern from maintenance workers.

Three senators mentioned problems such as cracks in walls and a hole in the floor, and Schultz responded that he would look into their comments.

Student Government Vice President Dwayne Bess complained about a light in his apartment that "comes on at will," apparently as the result of a short.

Schultz' only reply was, "But you're moving March 3."

Schultz said renovations to Cougar Village are ahead of

schedule. He also said SIUE has begun taking bids for construction of Bluff Hall.

The senate approved Mueller's appointment of Todd Sivia as a student senator and Richard Box as student organization advisory board chair.

Sivia is a newcomer to student government. He is a member of the College Republicans, the Pre-Law Association and the General Education Committee. Box is being relieved of his senatorial duties to take his new position. Mueller is seeking applicants for the vacant senate seat.

The senate approved the following program and travel requests: The Millennium of Peace Committee received \$6,784, the National Art Education Association received \$925, the National Society for Black Engineers received \$400, Sculptors at Wagner received \$4,510, the sociology club

received \$7,073, the Greek Council received \$425, the National Society for Black Engineers received \$425, the SIUE Chemistry Club received \$380 and the Wagner Potter's Association received \$425.

The senate approved a resolution to change allocation procedures for organizations. Instead of categorizing expenditures such as postage and printing fees, they will be lumped into one allocation based on how much the organization used the previous year.

Senators also submitted final responses to the fee reviews for the fiscal year that begins July 1, 2001. All senators agreed with the updated fee recommendations.

The senator of the month was Antionette Guthrie.

The next senate meeting is scheduled for 2:30 p.m. Friday, Feb. 11, in the International Room of the Morris University Center.

Calling volunteers to 'Action!'

BY RANDALL CLEVELAND
NEWS STRINGER

Students wanting to help others and make a difference will have a chance to do so Saturday.

The "Action!" program is calling for volunteers to work at the Holy Angels Shelter in East St. Louis. Volunteers must register by calling the Kimmel Leadership Center at 650-2686. A bus will depart from parking Lot B at 8 a.m. and will return at 4 p.m.

Volunteers are needed for computer work, cleaning the shelter and working with women the shelter helps. Volunteers will also work on a soup bus and prepare lunch for other workers at a soup kitchen for Catholic Urban Programs. Volunteers will also help the Lessie Bates Neighborhood Houses by cleaning and working in a family development program. Participants are reminded to wear sturdy footwear and durable work clothes.

"The greatest thing about programs like Catholic Urban Programs is the way people come

together," Suzanne Kutterer-Siburt of Kimmel Leadership Center said. "You have Catholics and Protestants working together. Race and religion don't matter here. It's nice to see how well they get along."

The "Action!" program is a volunteer project that has been running since the fall of 1993, and organizes days like this on Saturdays throughout the semester. "Action!" is open to all SIUE students. The program also helps with the Share Food Program in Granite City.

"Instead of saying 'Here is what we can do to try to help,' we go to these places and say, 'We're here, show us where we can help,'" Kutterer-Siburt said. "It's about building civic awareness because we talk about the things that a lot of people don't see or don't want to see. Students hear all these horrible things about places like East St. Louis, but then we take them down there and they see how much of a difference we're making."

2000 Black History Month Celebration

SOUTHERN ILLINOIS UNIVERSITY EDWARDSVILLE

DATE	TIME	EVENT	LOCATION
January 19 - February 25	Monday - Closed	Gallery Exhibition - <i>Shapes Wrought From My Mind</i> by Phillip Hampton	Morris University Center, Art Gallery
	Tuesday - Friday 10:00AM - 4:30PM		
	Saturday - Sunday 1:00PM - 3:00PM		
Sunday, January 23	1:00PM - 3:00PM	Art Gallery Gala Opening - <i>Shapes Wrought From My Mind</i>	Morris University Center, Restaurant
	3:00PM - 5:00 PM		Morris University Center, Art Gallery
Tuesday, February 1	11:00AM - 1:00PM	WSIE Radio Show featuring LaVerne Holliday	Morris University Center, Goshen Lounge
Tuesday, February 1	10:00AM - 6:00PM	Cultural Bazaar and Marketplace	Morris University Center, Goshen Lounge
Tuesday, February 1	11:45AM - 1:00PM	SIUE Jazz Band	Morris University Center, Goshen Lounge
Wednesday, February 2	11:00AM - 1:00PM	WSIE Radio Show featuring LaVerne Holliday	Morris University Center, Goshen Lounge
Wednesday, February 2	10:00AM - 6:00PM	Cultural Bazaar and Marketplace	Morris University Center, Goshen Lounge
Tuesday, February 8	7:00PM - 10:00PM	Motown Karaoke	Morris University Center, Cougar Den
Wednesday, February 9	12:00Noon - 1:00PM	SIUE Gospel Choir	Morris University Center, Goshen Lounge
February 9 - February 11	7:30PM - 10:00PM	<i>Chronicles II: Scenes from the Black Theater</i>	James Metcalf Theater
Wednesday, February 16	12:00Noon - 1:00PM	Katherine Dunham Tribute	Morris University Center, Goshen Lounge
Wednesday, February 16	9:00Noon - 11:00PM	Fireplace Flicks - <i>Stormy Weather</i>	Morris University Center, Opopi Lounge
Friday, February 18	7:00PM - 9:00PM	St. Louis Black Repertory Company - <i>A New Show</i>	Morris University Center, Meridian Hall
Tuesday, February 22	6:00PM - 10:00PM	Catch the Spirit: SIUE Student Talent Show	Morris University Center, Meridian Hall
Thursday, February 24	12:00Noon - 1:00PM	SIUE Gospel Choir	Morris University Center, Goshen Lounge

This program is sponsored in part or in whole by Student Activity Fees. For more information and a complete schedule of the month's events, contact the Kimmel Leadership Center at (618) 650-2686.

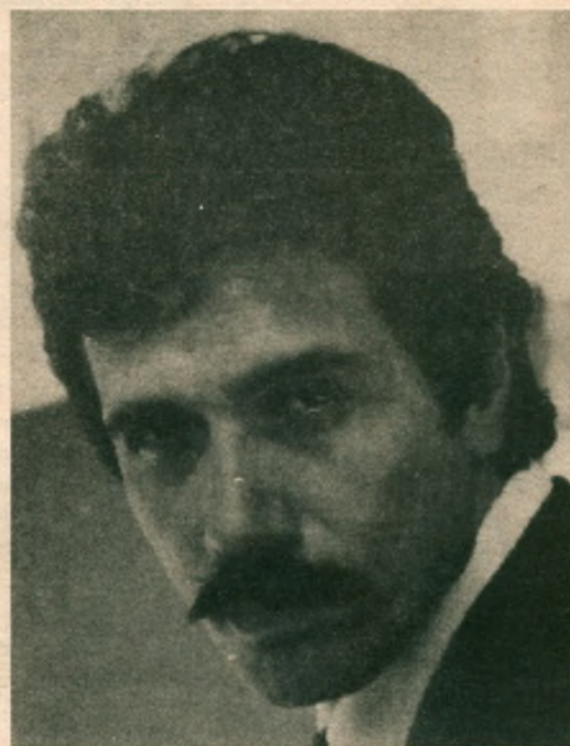
"Slender Woman" by Ben Agbee



Black History: A Global Perspective



OLMOS FILM FESTIVAL



Lovejoy Library Auditorium
6:30 p.m.

<i>Disappearance of Garcia Lorca</i>	Tues., Jan. 31
<i>Selena</i>	Tues., Feb. 1
<i>Stand and Deliver</i>	Mon., Feb. 7
<i>A Million to Juan</i>	Tues., Feb. 8
<i>American Me</i>	Tues., Feb. 15

The Social Consequences of Immigration Soup 'n' Substance

February 16, 2000 - Noon-1:00 p.m.

Cahokia Room

Facilitator: Dr. John Farley Student Facilitator: Violeta Garza

The panel consists of students representing diverse cultural backgrounds with social experiences relating to immigration.



We Are All In The Same Gang

Student Open Forum with

Edward James Olmos

February, 17 - 5:00 p.m.

Faculty Club

This is an opportunity to get up close and personal with Edward James Olmos. Olmos, born and raised in East Los Angeles, is not only an actor, but a producer, director, and community activist. He has launched a nationwide multi-media project called *Americanos: Latino Life in the United States*, distributed by the Smithsonian. He is known for his roles in *Miami Vice* and the feature films *Stand and Deliver* and *Selena*.

Sponsors:

- *Arts & Issues
- *Latin Awareness
- Student Organization
- *University Center Board
- *Student Leadership
- Development and
- Volunteer Services

These sessions are **FREE** and **OPEN** to all students, faculty, and staff. For more information, call Kimmel Leadership Center 650-2686.

‘Summertime’ comes to St. Louis

Romare Bearden’s ‘Summertime’ is added to Gallery 322 of the St. Louis Art Museum, a gallery dedicated to art from contemporary African-American artists.

BY CHRISTY SCHICKER
LIFESTYLES REPORTER

The St. Louis Art Museum recently acquired a major work by Romare Bearden (1914-1988), a prominent African-American artist.

The piece, titled “Summertime” (1967), is included among a group of works by other African-American artists who played a significant role in the progression of 20th century art.

“Summertime,” a large collage on board, depicts figures in a city scene. A woman holding an ice cream cone stands at the center on a sidewalk, while a man at the left sits in a chair. Behind these two figures is a building where large faces peer secretively out of partially concealed windows.

The building is made up of photocopies of architectural elements: bricks, columns and wrought-iron fences, as well as bold blocks of pink and blue paper.

Along with various types of paper, pink- and white-checked fabric is used for curtains, and paint is applied in loose strokes on the facade of the building.

The figures in the piece are disproportionate in form and in relation to the architecture. The two faces in the windows appear uncomfortably large compared to the two figures on the sidewalk.

The central woman is made up of parts that are either too large or too small for her complete figure. These proportion discrepancies add to the piece’s expressive content.

The way in which the woman holds the ice cream cone is similar to the pose of a jazz singer holding a microphone. This correlation opens up fields of interpretation, where the remaining three figures could become spectators in a jazz club.

The man seated in the chair at the left sits with his head tilted toward the ground and one hand covering part of his face. The man’s face, however, has no facial features and is made of two halves of colored paper, one half red and the other black.

A particular expressive quality is conveyed in this piece through the medium of collage.

Another piece included in the gallery by John Ahearn, titled “Clyde with Folded Arms” (1982-83), is a painted plaster sculpture of an African-American man. The sculpture hangs against the wall and includes half of the figure from the waist up.

The bearded man wears a blue, sleeveless shirt and holds his arms loosely in front of him against his chest. He smiles and looks away from the viewer toward the ground



Christy Schicker/Aleste
“Summertime,” Romare Deardan

oceans, rocky cliffs and small pools of water are included among the figures. The piece is capped off by a warm, blue sky. This piece is much smaller than “Summertime,” and its very smallness gives it the feeling of intimacy and closeness.

Included in the gallery are works by Robert Colescott, Lucien Freud, Jacob Lawrence, Elizabeth Peyton, Faith Ringgold and Susan Rothenberg.

These works can be seen in Gallery 322 located on the upper level of the St. Louis Art Museum. The pieces will be on display until the first week of March. The St. Louis Art Museum is located in Forest Park at 1 Fine Arts Drive, St. Louis. Hours are 1:30 to 8:30 p.m. on Tuesday and 10 a.m. to 5 p.m. Wednesday through Sunday; the museum is closed Monday. For more information, call the museum at (314) 721-0072 or visit the Web site at <http://www.slam.org>.



Christy Schicker/Aleste
“Jo Baker’s Birthday”(1993), by artist Faith Ringgold, is another piece in Gallery 322 of the St. Louis Art Museum

in a shy but kindly gesture.

The man is depicted with amazing realism. Each wrinkle on the hands and face is rendered while veins and bones can be seen beneath bronze-colored skin. Warm patches of red on the cheeks and lips and a purplish tint to the fingernails give the piece even more life.

A second piece by Bearden, titled “The Intimacy of Water” (1973), is an acrylic incised and photographic collage on chipboard. This piece shows two women in black silhouettes, one standing and one reclining next to a stream of richly colored blue water.

Photographs of different landforms,

What’s hot:

‘Blues in the Night’

The Arkansas Repertory Theatre presents this Tony-nominated musical at 7:30 p.m. Thursday and Friday in the Katherine Dunham Theater on the SIUE campus.

Beatle Bob’s b-day

For those of you who know and love this St. Louis legend, come out to the Hi-Pointe Friday night and join Robbie Fulk and the Riptones in the celebration.

Culture in the MUC

Tuesday and Wednesday, the third annual African Culture Bazaar will be in the Goshen Lounge of the Morris University Center from 10 a.m. to 6 p.m. WSIE-FM’s LaVern Holliday will be on-hand for the kick off of Black History Month and will broadcast her show, “Jazz in the A.M.,” live both days from the bazaar.

Undergrad Art

The Annual Undergraduate Art Exhibition is under way in the Art and Design Building. Forty-eight selected artworks are on display. The exhibit runs through Friday, Feb. 18. Gallery hours are 9 a.m. to 4:30 p.m., Monday through Friday.

Know what’s hot in entertainment?

Write for the Alestle Lifestyles Section.

Apply in person at the Alestle office on the second floor of the Morris University Center or call ext. 3524.

FOR THE LATEST IN ENTERTAINMENT READ LIFESTYLES



8 TANS \$2000
160 MINUTES

Limit One Per Customer • Must Present Valid ID
Must Present Coupon

CALL TODAY, 656-UTAN

EDITOR WANTED

the
**Freshman
Record**

EDITOR SEARCH

Apply Now...

**Accept the
challenge and
show your stuff.**

**The Office
of Student
Publications is
seeking an editor
for the fourth
edition of the
Freshman Record.**

The editor is responsible for designing and producing the annual publication. In addition to having a paid position, the editor has the professional satisfaction of producing a booklet seen by thousands of people. Applicants should have a basic understanding of magazine design and production. The work begins with the spring semester and continues through summer. Applicants should plan on being enrolled during the summer session. For more information, contact Mike Montgomery, Alestle adviser, at 650-3597.

The real Hollywood story

'Isn't She Great' tells the tale of the book that exposed Tinseltown

BY JASON HEEREN
LIFESTYLES STRINGER

There's two sides to every Hollywood story: the glitzy, glamorous side that everyone brags about and the side that represents the dark underside of human nature that no one seems too eager to talk about. "Isn't She Great" is a mixture of both.

In "Isn't She Great," Bette Midler ("For The Boys," "Ruthless People") stars as Jacqueline Susann, an actress whose career we see slide from bad to worse — she can't even sell fondue at a grocery store. When Susann finally hits bottom, she meets Irving Mansfield, played by Nathan Lane. Mansfield proclaims he can take her to the top, and the adventure begins.

With the help of her friend Florence Maybelle, played by Stockard Channing, the three start to write a book that can be described as "'Gone With The Wind,' only filthy." They accomplish this by combining their collective experiences of Hollywood hookers, addicts, trophy husbands and swimming pool orgies. Basically, this is a real Hollywood story.

The process of getting a publisher is slow going. The only publisher who would take Susann is Henry Marus, portrayed by John Cleese ("A Fish Called Wanda," "Time Bandits," "The Out-of-Towners"). Marus is an ultra-hipster who believes Susann's book, "Valley of the Dolls," is going to be the next best seller, but it needs some refinement. Along comes Michael Hastings, played by David Hyde Pierce. Hastings is an uptight "old money" society chap who receives the arduous task of attempting to shape

Susann's book into something "less pornographic." He fails, but in the process he learns a little about himself and the school-girl yearnings of his grandmother.

While the movie celebrates the life of Jacqueline Susann, it also lightheartedly addresses the darker side of glitz and glamour. We see the pain of a mother whose child is less than most people's view of perfect, the angst of an actress who can't find work and her fear of going through life unfulfilled. Heavy stuff, but the lightheartedness mentioned earlier was an attempt to keep up with the film's tempo, but somehow made it seem only half the story was being told.

In short:

Nudity ... None, thankfully.

Language ... Yes, but after a while it's funny.

Violence ... Stockard Channing kills a bottle of vodka.

"Isn't She Great" runs 95 minutes, is rated R and is showing at theaters everywhere.



photos courtesy Universal Pictures



Things to Do artistic opportunities for students

Actors:

Brand X Comedy Troupe is auditioning sketch and improvisational actors. For more information, call (314) 776-4469.

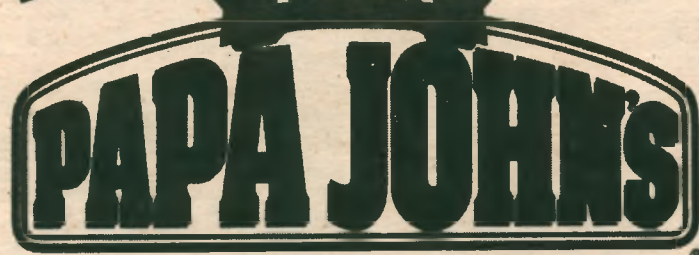
Writers:

The Pop-TV Writing Contest invites undergraduates to write a plot for an episode of a current television show featuring the subject of urban or suburban sprawl. Entries should be fewer than 1,500 words and must be postmarked or uploaded by Tuesday, Feb. 15. Submit entries online at [http://www.zpg.org/education/writing contest](http://www.zpg.org/education/writing%20contest) or send to ZPG, 1400 16th Street NW, Washington, DC, 20036. For more information, log on to the above Web address or call (800) 767-1956.

SIUE's student literary magazine, the River Bluff Review, is accepting submissions of poetry, short fiction, drama and nonfiction. A sheet of paper with the author's name, address, phone, e-mail and several sentences about the author should be attached to each manuscript. Submission is open to students of SIUE. Submissions can be dropped in the River Bluff Review mailbox, located with the English faculty mailboxes on the second floor of the Peck Building. Deadline for submissions is Friday. For more information, contact Jeffrey Skoblow at 650-3188 or by e-mail at jskoblo@siue.edu.

St. Louis Writer's Workshops in novel writing, romance writing, scriptwriting and feature stories will meet for eight to 10 weeks beginning in March. Manuscripts for critique are due by Monday. Workshops are held at the Olivette Community Center, 9723 Grandview Drive. For more information, call (314) 692-2629.

FREE DELIVERY! **CARRYOUT!**



**1 Large
1 top pizza**
\$8.99

SPECIAL OR THIN CRUST WHERE AVAILABLE.
Expires 4/30/00. Not Valid with any other offer. Valid only at participating locations. Customer pays all applicable sales tax. Additional toppings extra.

Breadsticks
\$1.99

SPECIAL OR THIN CRUST WHERE AVAILABLE.
Expires 4/30/00. Not Valid with any other offer. Valid only at participating locations. Customer pays all applicable sales tax. Additional toppings extra.

Glen Carbon/Edwardsville/SIU
659-7272

Step into 'The Night'

BY DAVID STOESZ
THE DAILY

(U-WIRE) SEATTLE — Morphine founder and frontman, Mark Sandman, once compared his music to cooking: "For years, I made myself a red sauce for pasta with oregano, some thyme, some basil, black pepper, salt, some of this, some of that. I thought that's how you were supposed to make it. Then one day, I didn't put anything in. I just forgot. And it was the best sauce I ever made. That moment right there taught me a lot."

This less-is-best aesthetic led to an unlikely lineup for Morphine: drums, sax and Sandman's two-string bass. Over the minimalist groove created by this trio, Sandman sang fragmented urban tales in a deadpan, guttural baritone. His lean and suggestive lyrics carried more weight than their simplicity suggested, as in this couplet from 1993's "Cure for Pain:" "If I am guilty so are you / It was March 4, 1982."

Like the drug the band was named for, Morphine exerted a powerful physical effect with its deep, dark grooves. The band has had a knack for bypassing the brain and appealing directly to the spinal chord. Part of this physical effect was due to harnessing bowel-rattling lower registers. The band members prowled the lower register as if it were their own nocturnal empire. In a parody of publicists' need for gimmicky labels, Sandman even dubbed the sound "low rock."

But Morphine's beguiling power was created not only by deep, overlapping tones, but also by the forward propulsion of the rhythm. Groove was central to Morphine. Prince, one of Sandman's all-time favorites, was an unlikely but important influence. But unlike Prince, Morphine's sound evoked not a party, but a menacing film-noir world. Morphine's sometimes low-fi production values made the music sound weirdly muffled, as if it emanated from

another, darker world, separated from this one by only a layer of cheap drywall.

"The Night" is Morphine's fourth and final album. Sandman suffered a fatal heart attack while performing in Italy in July. The album is thus both a fitting capstone to Sandman's

musical career and a poignant glimpse of Morphine's unrealized future. "The Night" expands the trio's sound with contributions from a number of Morphine's friends and associates from the Boston music scene. Though the instrumentation is more elaborate, restraint remains the guiding principle. It is, in

fact, startling to read the album's credits and see just how many instruments were used to create the spare sound of these songs: guitars, piano, cello, viola, a second bass, a second set of drums and an organ, as well back up singers.

"The Night" opens with the dark, Leonard Cohen-esque title track that sets the tone. This track also introduces the deliberately marching minor piano chords that recur to great effect throughout "The Night." Things become even more mesmerizingly bleak in "Rope of Fire," a piece that has Sandman casting a spell of sensuously bent bass notes behind a stripped-down percussion groove. But Morphine refused to become a caricature of itself, puncturing the deliciously gloomy mood with the almost celebratory "Top Floor, Bottom Buzzer."

Though the death of Sandman ensures this will be Morphine's last studio album, there is a live album in the works, as well as a new project called The Morphine Orchestra. The Orchestra was formed by Morphine drummer Billy Conway and saxophonist Dana Colley to honor the memory of Mark Sandman and to give life to the material from "The Night" that has never been performed live.



photo: Dreamworks Records

UCB
UNIVERSITY CENTER BOARD

GET INTO IT WITH UCB!



Tuesday 2/1:
"Just For Laughs" Comedy Series
presents
Spike Rizzo
8:00 Cougar Den

**Soup & Substance
Lecture Series**
Wednesday, 2/2

Paul Pitts
"Equal Opportunity Programs:
Affirmative Action"
Noon Cahokia Room



Wanna do what we do?

Applications for Fall 2000 Chair positions are due February 16

DELTA UPSILON EXPECT NOTHING LESS

**FRIENDSHIP
CHARACTER
CULTURE
JUSTICE**

**JOIN MORE THAN 100,000 MEN
IN 165 YEARS OF EXCELLENCE.**

**BUILD SIUE'S NEWEST FRATERNITY
INTO YOUR TRADITION OF EXCELLENCE**

**TO FIND OUT MORE ABOUT DELTA UPSILON
CHECK OUT AN INFORMATION MEETING:**

TUESDAY FEB 1 - PRAIRIE RESIDENCE HALL @ 5 P.M.

WEDNESDAY FEB 2 - WOODLAND RESIDENCE HALL @ 5 P.M.

ΔΥ
WWW.DELTAU.ORG

**FOR MORE INFORMATION
PLEASE CONTACT:
MATT WILSON OR
KRIS ROBL AT
JOINDU@DELTAU.ORG
OR 650-3464**

Film has something for everyone

BY ROSEMARY LADD
FOR THE ALESTLE

"Topsy-Turvy" is fun, glamorous, insightful movie worth seeing.

There is no computerized special effects scene, no angst-ridden youth waiting for life to get better and no tear-gushing female trying to keep, find or leave her true love.

There is dialogue, great acting, stunning cinematography and authenticity. So check the following list for your particular major and/or minor discipline to find why "Topsy-Turvy" is worth your time.

Business: Learn from Wendy Nottingham, who plays Helen Lenoir, the assistant to the owner of the Savoy Theatre, how to negotiate, enforce and rewrite contractual agreements with those "artsy" people.

Computer Science: See what it was like in the days when printers were drunk or dead —

not jammed or out of paper.

Theater: Gilbert and Sullivan, played by Jim Broadbent and Allan Corduner, do not treat their cast with any more or less contempt than used by directors today. Some things never change.

Music: Imagine two talented and gifted artists working together, making money and still personally loathing each other. They are funny and pathetic and their work shows it.

Foreign Language: See Mrs. Fanny Ronalds, played by Eleanor David, speak two languages in one sentence and everyone in the room understands what she said.

History: You aren't watching Victorian England, you are immersed into a era with a subtlety that leaves you looking at this new century with awe.

Women's Studies: The last scene between Gilbert and his wife, Kitty, portrayed by Lesley Manville, is terrifying and a

must-see.

Psychology: The character of Leonora Braham, played by Shirley Henderson, could have been Norman Bates' grandmother. She can make evil women pale when she enters a room.

Martin Leigh has created a portal to Victorian England. As writer and director, Leigh deserves most of the credit for stealing a moment in time to share with the viewer.

Robin Sales, the film editor, uses superb continuity to make this story easy to follow.

Lindy Hemming's work on the costumes is too much fun. Her research and attention to detail could have been the inspiration for the scene when the lead actresses are badgering the costume mistress about the lack of corsets.

"Topsy Turvy" is rated R and is currently showing at the Hi-Pointe Theatre. Check it out.

Places to go concert calendar

Tuesday

American Theatre: Sno-Core featuring System of a Down, Incubus, Mr. Bungle and Puya, 7:30 p.m.

Creepy Crawl: Ballydowse with A Season's End and Children Audio

Galaxy: Insane Clown Posse with Twiztid and 20 Dead Flower Children

Generations: Shawn Pittman, 8 p.m.

Hi-Pointe: Whippersnapper, 9 p.m.

Thursday

Creepy Crawl: D-Align and Stagnant

Galaxy: Undecided Noyz with Cope and Outflow, 7 p.m.

Side Door: Glory For Champions with Anders Parker and Grandpa's Ghost

Friday

Blueberry Hill: Roomful of Jimmys with Daisychain, 9 p.m. (Duck Room)

Creepy Crawl: The Conformists with the Non-Prophets, 13 After Cross Country Felons and Jesus and the Flaming Tacos

Firehouse: Aquatic and Jamstone

Galaxy: Ramzeus with Realm, Fracture and 1369, 7 p.m.

Hi-Pointe: Beatle Bob Birthday Bash with Robbie Fulks and the Riptones

Mississippi Nights: Moe, 6:30 p.m.

Three-One-Three: Dubtronic Reggae 2000

Saturday

Blueberry Hill: Drew Johnson Band with Languid, 9 p.m. (Duck Room)

Murder City Players, 9 p.m. (Elvis Room)

Galaxy: Dirty Ernie's Grease Ball featuring the Tripdaddys, Rockhouse Ramblers and the Honkeys, 8 p.m.

Mississippi Nights: The Jazz Mandolin Project featuring Jamie Masefield, Jon Fishman and Danton Bowler, 8 p.m.

Side Door: Corbra Verde with Prisonshake

Three-One-Three: Fragile Porcelain Mice with Tanger

Monday

Mississippi Nights: Lords of Acid with Praga Khan and Genaside 2, 7 p.m.

Morris University Center M * U * C happenings February 1-7

1 - Tuesday

7:30 pm : Coffeehouse Showcase (MUC Restaurant) Free Admission

8:00 pm : Just for Laughs (Cougar Den). Come down to the Cougar Den and get your tickle bone going. Spike Rizzo is tonight's featured comedian. FREE admission & snacks. Sponsored by UCB.

2 - Wednesday

12:00 pm : Center Stage (Goshen Lounge)

8:00 pm : Film "Star Wars, Episode I" (Opapi Lounge) See this great film that was just at the boxoffice. Plenty of Sci-Fi to satisfy anyone. FREE Admission & Snacks.

3 - Thursday

7:00 pm - 10:00 pm : Must See TV (Goshen Lounge) Come and see some of your Thursday night programming on a large screen TV with a friend. Free coffee & popcorn.

4 - Friday

8:00 pm : LIVE MUSIC (Cougar Den) Two Point Zero Band will be performing tonight's concert. Where else can you go on a Friday evening for FREE live music & snacks and hear some of the hottest tunes?

7 - Monday

8:00 pm : Monday Night NITRO (Cougar Den). See wrestling at it's finest on a large TV. It's Real! It's Real! Every Monday, Free Snacks.

<http://www.siue.edu/UNVCNT/happenings>

Where it's at concert venues

American Theatre
Ninth and St. Charles
St. Louis
(314) 241-1888

Generations
10709 Watson Road
St. Louis
(314) 516-9218

Blueberry Hill
6504 Delmar (in the Loop)
University City
(314) 727-0880

Hi-Pointe
1001 McCausland Ave.
St. Louis
(314) 781-4716

Cicero's
6691 Delmar (in the Loop)
University City
(314) 862-8600

Mississippi Nights
914 N. First St. (Laclede's
Landing)
St. Louis
(314) 421-3853

Creepy Crawl
412 N. Tucker Blvd.
St. Louis
(314) 621-9019

Side Door
2005 Locust St.
St. Louis
(314) 231-6402

Firehouse
3221 Olive St.
St. Louis
(314) 533-5263

Three-One-Three
313 E. Main St.
Belleville
(618) 239-6885

Galaxy
1227 Washington Ave.
St. Louis
(314) 231-2404

The Lady Cougars have yet to allow an opponent to shoot better than 45 percent from the field against them this season. SIUE held the University of Indianapolis to 35 percent Thursday and Northern Kentucky University to 35.4 percent Saturday.

Women's basketball: 5:30 p.m. Thursday against the Indiana University-Purdue University at Fort Wayne (home); 1 p.m. Saturday against St. Joseph's College (home).
Men's basketball: 7:30 p.m. Thursday against the Indiana University-Purdue University at Fort Wayne (home); 3 p.m. Saturday against St. Joseph's College (home).
Wrestling: 7 p.m. Friday against Central Oklahoma at Edmond, Okla.

Lady Cougars fall to Norse in nail-biter

SIUE women's team falls just short of beating conference-leader Northern Kentucky University

BY ANDY LEHMAN
 ASSISTANT NEWS EDITOR

The Lady Cougars, after knocking off the University of Indianapolis Lady Greyhounds Thursday, fell to the Norse of Northern Kentucky University in Great Lakes Valley Conference play Saturday, snapping their five-game winning streak.

SIUE, now 7-4 in the GLVC and 12-5 overall, got off to a promising start with a 70-54 win over the University of Indianapolis Thursday night.

"I was a little worried since we hadn't been on the road in a while," head coach Wendy Hedberg said. "But we were focused and played a solid game."

Misi Clark led the way in scoring with 20 points. She grabbed eight rebounds and gave four assists. Sarah Sollberger added 14 points in the Lady Cougar victory, and Sarah Cook scored 13 points and pulled down eight rebounds.

SIUE was able to contain Indianapolis' Elizabeth Ramsey and Laura Schmalstig to a combined 13 points. Indianapolis had 10 different players score, but only forward Rana Glenn scored in double digits with 14 points.

The Lady Cougars headed into battle Saturday with Northern Kentucky, the No. 1 team in the GLVC.

"We were concerned about their defense," Hedberg said. "They have one of the best defenses around."

However, it was SIUE's defense that had the Northern Kentucky offense tied up in knots.

Northern Kentucky averages 77.5 points per game and on average, beats its opponents by 20.1 points. The Lady Cougars held the Norse to 59 points, but SIUE still lost 59-56.

"Our defense was great, but we just couldn't get it done from the free-throw line," Hedberg said.

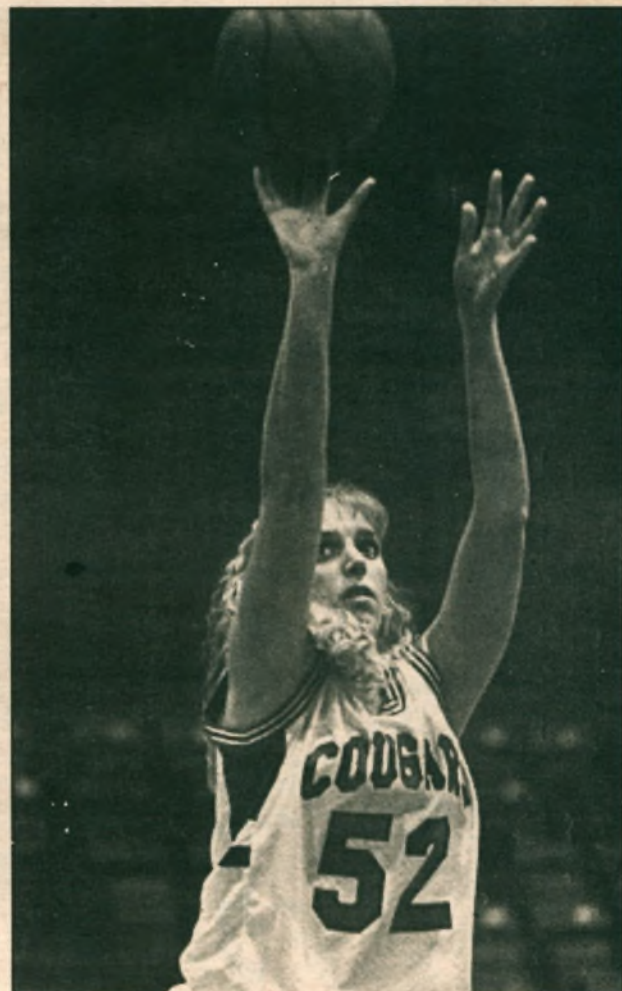
The Lady Cougars were a combined 9-20 from the charity stripe Saturday. Clark was fouled while shooting a three-point shot to tie the score near the end of the game. Clark missed all three free throws and the opportunity to send the game into overtime.

Clark played all 40 minutes of the game against Northern Kentucky and scored 25 points, grabbed eight more rebounds and handed out six assists.

"I know it really hurt Misi to miss those free throws," Hedberg said. "You have to give her a lot of credit for her performance."

Hedberg said that the road games gave the Cougars a confidence boost. They proved that they could play with the teams like Northern Kentucky.

The Lady Cougars return home to face GLVC rivals Indiana University-Purdue University at Fort Wayne Thursday in another "Pack the Gym" night and St. Joseph's College in the homecoming game Saturday.



SIUE photo services

SIUE center Sarah Cook remains the leading free throw shooter for the Lady Cougars. Cook has gone 42-for-52 from the line this season for a percentage of .808, good for sixth-best in the conference.



SIUE photo services

SIUE forward Sarah Larson (54) contributed nine points in the Lady Cougars' loss to Northern Kentucky University Saturday.

Men's team drops two road contests

Moss may miss three to four weeks due to injury; SIUE drops to eighth place

BY RICK CROSSIN
 ASSISTANT SPORTS EDITOR

The SIUE men's basketball team not only lost two conference games over the weekend, but lost one of its leading scorers as well.

Sophomore guard Ty Moss injured his ankle and could miss three to four weeks.

"We know for sure he's out this week," head coach Jack Margenthaler said. "But we don't think the injury is that bad."

Moss injured the ankle in Thursday's loss to the University of Indianapolis. The Cougars fell to the Greyhounds 72-65.

According to Margenthaler,

the main problem in Thursday's game was turnovers. SIUE committed 21 turnovers, while Indianapolis only had nine.

"We shot ourselves in the foot again," Margenthaler said. "We get a bad turnover at crucial times and the other team capitalizes on it."

SIUE guard Antonio McKinzie scored a game-high 25 points and grabbed seven rebounds to lead the Cougars.

"Antonio played well the whole weekend," Margenthaler said. "He's come back and played very well."

The Cougars dominated the boards in the game, compiling 16

offensive rebounds to Indianapolis' seven.

The game was won, however, at the charity stripe. The Greyhounds made 20 of 26 free throws in the game, while SIUE made just seven of 11.

"That happens a lot on the road," Margenthaler said. "We put them on the line too many times."

With the win, Indianapolis improved its record to 6-4 in the Great Lakes Valley Conference and 10-6 overall.

The Greyhounds also upset the University of Southern Indiana on Saturday to drop the Screaming Eagles from first overall in the GLVC to third in just three days.

Unfortunately, the Cougars'

Saturday night game didn't go as well as it did for Indianapolis.

The Cougars lost 88-71 to Northern Kentucky University in a game that featured well-balanced scoring for both teams.

SIUE had four players score in double digits as McKinzie once again led the way for the Cougars scoring 16 points and snatched nine rebounds.

Adam Norwell led the Norse with 22 points and eight boards.

"Northern Kentucky is a very good team," Margenthaler said. "We just didn't shoot the ball really well."

SIUE seemed to find a cure to the turnover epidemic Saturday night, only yielding 12 turnovers.

see MEN'S page 13



SIUE photo services

SIUE's Derek Cowan scored six points against the Norse.

RN's/LPN's

Responsible for daily patient and the appropriate administration of medication. The position requires a current license and an interest in working with the geriatric population.

Sunbridge Care & Rehabilitation for Edwardsville
401 St. Mary Drive
Edwardsville, IL 62025
618.692.1330 Fax: 618.692.9478
www.sunh.com



RENT

CARS - Economy to Luxury
VANS - 7-8-12-15 Passenger Vans
Cargo Vans
SUV's - Dodge Durango-4x4's
TRUCKS - Full Size & Mid Size

Cassens
EDWARDSVILLE/GLEN CARBON
CHRYSLER • DODGE • PLYMOUTH

Call Rental **692-7386**
3333 S. HWY 159 • Glen Carbon
2 Miles North Of I-270

Rent-A-Car

Hollywood ★ Tan

**8 VISITS
FOR
\$19.99**

CALL TODAY 656-TANN
New Location on 159 next to Denny's

Men's Tennis Tryouts



Contact Coach Logan
650-2867

SIUE track teams continue to improve in indoor season

Gold finishes first in long jump; Ribes, Bozue set new highs

BY TONY AMMANN
SPORTS EDITOR

With the snow flying and the blustering winds howling, the SIUE men's and women's track teams are enjoying success indoors this season.

Both teams competed in the third of six indoor track meets on the 1999-2000 schedule Saturday at the Butler Indoor Invite in Indianapolis, Ind.

The most successful event for the Lady Cougars came in the 4x400-meter relays. SIUE finished sixth out of 10 teams in the event, which included two other Great Lakes Valley Conference teams, Lewis University and the University of Indianapolis.

One of the stronger races for the women's squad came in the 1-mile run. Sophomore Amanda Bozue and senior Lisa Ribes each set personal records in the race. Bozue finished ninth with a time of 5:17.34 and Ribes came in 13th at 5:20.44.

SIUE head coach Darryl Frerker was impressed with the performance of both runners.

"We're looking at the possibility of qualifying for nationals," Frerker said. "It's a feather in the cap for both Amanda and Lisa."

Senior runner Ann Miklovic and junior Jill Irlam had successful races in the 800-meter run Saturday. Miklovic finished 11th out of 27 with a time of 2:24.22 and Irlam crossed the

finish line in 2:28.51.

In the women's 3,000-meter run, SIUE's Chenoa Glenn broke the top 10 with a ninth-place finish, while teammate Tamekia Howard came in 17th in a field of 31 runners. Glenn, a senior, broke the one-minute barrier as well with a time of :59.73. Howard, a junior, finished the race in 1:02.28.

Sophomores Desiree Barcomb and Alexis Schweinberg finished in the middle of the pack in the 60-meter low hurdles, finishing 17th and 18th respectively. Barcomb also finished 21st out of 35 in the 60-meter dash.

Senior Janece Friederich finished 22nd in the 200-meter dash as the sole participant for the Lady Cougars in the event. Friederich crossed the finish line with a time of :27.34.

On the men's side, sophomore Ryan Gold was as good as his surname Saturday. Gold was the only member of both the women's and men's teams to finish first in an individual event, winning the long jump with a distance of 22-10 1/2.

Frerker thinks Gold is an unspoken leader on the youthful men's team, which has no seniors on the 22-man roster.

"He's been competing well all season and has a lot of confidence," Frerker said. "He leads by example and has developed his consistency through hard work."

Gold also competed in the 200-meter dash, finishing 12th with a time of :22.87. Frerker said Gold was disappointed he didn't break his own school record in the event.

"He is very consistent and strong, and I anticipate some good things happening with him," Frerker said.

Junior Joshua Benton had a strong showing Saturday for the Cougars as well. Benton, a junior from Carbondale, finished fifth in the high jump with a height of 6-4 3/4. Freshman Tyrone Walker finished fifth in the 400-meter dash as the sole representative for the Cougars. Walker finished 24th out of 39 with a time of :52.13.

The Cougars finished eighth in the 4x400-meter relay with a time of 3:27.80 and junior Dan Walden placed 22nd in the 800-meter run with a time of 2:00.75.

Frerker thinks the women's team in particular has a legitimate shot at competing for the GLVC Championship meet which takes place Saturday, March 4 in Romeoville.

"We have individuals in every event on both the women's and men's sides, which is a first for us," Frerker said. "I think the women's side will be a little stronger because we have more runners in more events."

The next event on tap for SIUE will be Saturday at the Illinois State Open in Normal, with the times of the events to be announced.

1999-2000 SIUE women's indoor track roster

Name	Year	Event	Hometown/High School
Crystal Anderson	Jr.	Hurdles/Pole Vault	Salem/Salem
Desiree Barcomb	So.	Heptathlon	Tampa, Fla./Gaither
Mekelle Beck	Sr.	Throws	Arenzville/Triopia
Amanda Bozue	So.	Middle Distance	Joliet/Central
Heather Collins	Sr.	Throws	St. Charles/St. Charles
Jessica Conley	Fr.	Sprints	Florissant, Mo./Rosati-Kain
Jennifer Cummings	So.	Sprints	Pontiac/Pontiac
Casey Faro	Sr.	Long Jump	Herrin/Herrin
Bridget Fitzpatrick	Sr.	Distance	Florissant, Mo./McCluer North
Shelly Friberg	Fr.	Middle Distance	Springfield, Mo./Kickapoo
Janece Friederich	Sr.	Sprints	St. Louis, Mo./Rosary
Chenoa Glenn	Sr.	Sprints	Ferguson, Mo./Kaleheo
Tamekia Howard	Jr.	Sprints/Middle Distance	Florissant, Mo./McCluer North
Jill Irlam	Jr.	Middle Distance	Virden/Virden
April Jungwaelter	Sr.	Heptathlon	Rockwood/Chester
Ann Miklovic	Sr.	Middle Distance	St. Louis/Bishop DuBourg
Stephanie Mullen	Fr.	Distance	Atwater/Girard
Kathy Ostrander	So.	Throws	Valparaiso, Ind./Portage
Lisa Ribes	Sr.	Distance	Benld/Gillespie
Kelly Saunders	Sr.	Throws	Eldorado, Ohio/National Trail
Alexis Schweinberg	So.	Hurdles/Long Jump	Normal/West
April Selby	Fr.	Distance	Shelbyville/Shelbyville
Penny Simons	Fr.	Middle Distance	Minier/Olympia
Sarah Turpin	So.	Hurdles	Belleville/Belleville East
Marhiah Wilkinson	So.	Long Jump	Leland/Leland
Kathleen Wilson	So.	Javelin	Carterville/Carterville

MEN'S

from page 11

Unfortunately, Northern Kentucky outrebounded the Cougars 36-30.

"Our rebounding went to pot on us," Margenthaler said. "We needed them in the second game and we didn't get them."

Marty Perry took Ty Moss' place in the lineup and scored four points.

"I didn't think Marty had an exceptional night," Margenthaler said. "It was a pretty unfamiliar spot for him."

With the loss, SIUE dropped to 4-7 in the GLVC and 8-9 overall.

Margenthaler is going to spend more time this week to practice on passing drills to cut down on the turnovers.

"We really need to work on making better decisions," Margenthaler said. "It's not the technique of the pass that's the problem, it's knowing when to make it."

The Cougars will also focus on improving their rebounding in practice this week.

"We make the drills competitive and try to put as much emphasis on effort as we can," Margenthaler said. "Rebounding is mostly effort."

Forward Travis Wallbaum leads the Cougars in rebounding with 9.6 boards per game.

SIUE will try to improve its record this Thursday night as the Cougars face Indiana University-Purdue University at Fort Wayne at the Vadalabene Center.



SIUE photo services

SIUE Ryan Cross (right) has played in all 17 games this season.

1999-2000 SIUE men's indoor track roster

Name	Year	Event	Hometown/High School
Andrew Anzalone	Fr.	Middle Distance	St. Peters, Mo./Fort Zumwalt South
Marcus Beasley	Fr.	Sprints	St. Louis/Riverview Gardens
Joshua Benton	Jr.	Middle Distance	Carbondale/Carbondale
Shawn Brundies	Jr.	Distance	Hardin/Calhoun
Travis Carter	So.	Sprints	Belleville/Belleville East
Darren Dinkelman	Fr.	Middle Distance	Nashville/Nashville
Dustin Gentry	Fr.	Distance	Charleston/Charleston
Ryan Gold	So.	Sprints/Jumps	Hartford/East Alton-Wood River
Marqus Hall	Jr.	Sprints/Jumps	Hillside/Proviso West
Ben Hilby	Fr.	Middle Distance	Rockford/Boylan
Scott Kuehnle	Fr.	Sprints/Hurdles	Marshall/Marshall
Chris Meyer	Fr.	Middle Distance	Springfield/Southeast
DeAnthony Moore	So.	Sprints	St. Louis/Jennings
George Murphy	So.	Decathlon	Virden/Virden
Jason Olszowska	So.	Middle Distance	Lockport/Lockport
Joe Pashea	So.	Sprints	Collinsville/Collinsville
Gawain Piper	Fr.	Middle Distance	Benton/Benton Consolidated
Eli Potter	So.	Throws	Georgetown/Georgetown-Ridgefarm
Joseph Raby	Fr.	Sprints/Hurdles	Benton/Benton
Kerry Studnicki	Fr.	Middle Distance	Wood River/East Alton-Wood River
Daniel Walden	Jr.	Middle Distance	Springfield/Springfield
Tyrone Walker	Fr.	Sprints	East St. Louis/East St. Louis

2000 SIUE track remaining schedule

Date	Event	Site	Time
Sat., Feb. 5	Illinois State Open	Normal	TBA
Sat., Feb. 12	Saluki Indoor Open	Carbondale	TBA
Sat., Mar. 4	GLVC Indoor Championships	Romeoville	TBA
Fri.-Sat., Mar. 10-11	NCAA-II Indoor Champs.	Boston	TBA
Fri., Mar. 24	Washington Univ. Mini Meet.	St. Louis	TBA
Sat., Apr. 1	Cougar Classic	HOME	TBA
Sat., Apr. 8	Washington Univ. Invite	St. Louis	TBA
Sat., Apr. 22	GLVC Championships	Indianapolis	TBA
Fri.-Sat., Apr. 28-29	SIUE Twilight (Hept./Dec.)	HOME	TBA
Fri., May 5	Washington Univ. Last Chance	St. Louis	TBA
Thur.-Sat., May 25-27	NCAA-II Outdoor Champs.	Raleigh, N.C.	TBA

CHATEAU TOWNHOMES

Green Meadows, Kingston

THIS WEEK ONLY NO SECURITY DEPOSIT

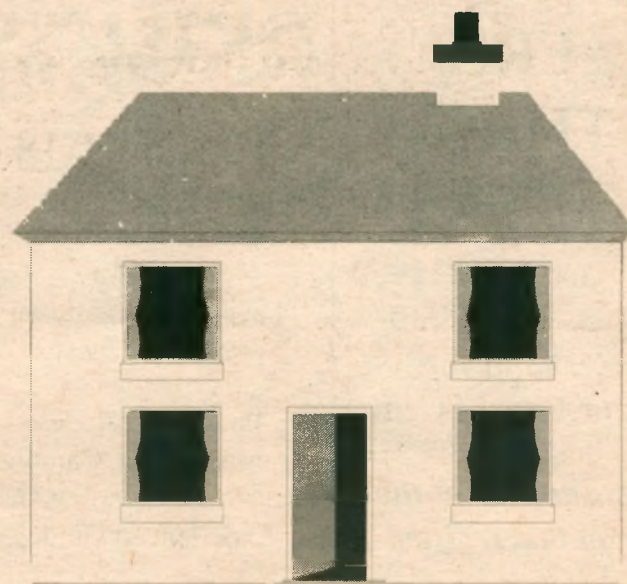
1+2 Bedroom Apartments

- W/S/T Included
- Professionally manicured grounds
- Beautiful pool with sundeck
- W/D hookups & laundry facilities
- 24 Hour Emergency Maintenance

20 Minutes from campus

Call us for Details

377-3000





Apply by February 10 for

2000 – 2001 University Scholarships
2000 – 2001 SIUE Foundation Scholarships

Applications available in the Office of Student Financial Aid,
2308 Rendleman Hall.

www.finaid.siue.edu



SIUE COUGAR SCORES



WOMEN'S BASKETBALL

GLVC Standings

Team	GLVC Record
1. Northern Kentucky	9-1
2. Missouri St. Louis	8-3
3. Kentucky Wesleyan	7-3
4. SIUE	7-4
5. Lewis	7-4
6. Bellarmine	6-5
7. Southern Indiana	6-5
8. Indianapolis	5-6
9. IUPUI-Fort Wayne	4-7
10. St. Joseph's	3-8
11. Wisconsin-Parkside	2-9
12. Quincy	1-10

SIUE Team Leaders

Points per game	
1. Misi Clark	22.6
2. Sarah Cook	11.6
3. Sarah Sollberger	10.5
Rebounds	
1. Crystal Gladson	118
2. Misi Clark	113
3. Sarah Cook	95
Assists	
1. Misi Clark	89
2. Kristi Eller	48
3. Sarah Sollberger	47
Steals	
1. Misi Clark	57
2. Sarah Sollberger	17
3. Kristi Eller	13

Thursday

SCORE BY PERIODS	1st	2nd	Total
SIUE	33	37	70
Indianapolis	24	30	54

SIUE

Scoring (70):
Sarah Sollberger 6-13, 0-0, 14; Jill Johnson 1-3, 3-4, 5; Sarah Cook 5-8, 3-4, 14; Misi Clark 6-18, 8-12, 20; Heather Hillebrenner 1-3, 0-0, 2; Kristi Eller 2-4, 0-0, 6; Crystal Gladson 5-9, 0-0, 10.
Rebounding (41):
Sollberger 4, Johnson 2, Cook 8, Clark 8, Hillebrenner 1, Julia Brokaw 1, Eller 4, Gladson 6, Liz DeShasier 1, Sarah Larson 3.
3-Point Field Goals (4):
Sollberger 2, Eller 2.
Assists (14):
Sollberger 3, Johnson 1, Cook 1, Clark 4, Hillebrenner 2, Eller 3.

Indianapolis

Scoring (54):
Rana Glenn 6-10, 2-2, 14; Elizabeth Ramsey 3-10, 1-2, 7; Emily Hammes 1-5, 2-2, 4; Kendall Virgin 2-4, 0-0, 5; Angi DeWitt 2-4, 0-0, 4; Angel Hall 3-12, 1-2, 7; Laura Schmalstig 1-4, 3-4, 6; Allison Sturtevant 1-4, 1-5, 3; Andrea Shafer 1-3, 0-0, 2; Anne Frantz 1-1, 0-0, 2.
Rebounding (41):
Glenn 3, Ramsey 11, Hammes 6, Virgin 1, DeWitt 2, Hall 2, Schmalstig 2, Sturtevant 5, Shafer 2, Abby Luttrell 2, Frantz 1.
3-Point Field Goals (2):
Virgin 1, Schmalstig 1.
Assists (10):
Glenn 1, Virgin 1, DeWitt 4, Schmalstig 1, Shafer 2, Luttrell 1.

Saturday

SCORE BY PERIODS	1st	2nd	Total
SIUE	25	31	56
Northern Kentucky	27	32	59

SIUE

Scoring (56):
Sarah Sollberger 1-5, 2-2, 5; Jill Johnson 2-5, 3-4, 7; Sarah Cook 3-7, 0-0, 6; Misi Clark 10-20, 3-10, 25; Crystal Gladson 2-5, 0-3, 4; Sarah Larson 4-5, 1-1, 9.
Rebounding (35):
Sollberger 2, Johnson 7, Cook 6, Clark 8, Kristi Eller 2, Gladson 1, Megan Grizzle 1, Larson 3.
3-Point Field Goals (3):
Sollberger 1, Clark 2.
Assists (11):
Sollberger 2, Johnson 1, Cook 1, Clark 6, Larson 1.

Northern Kentucky

Scoring (59):
Michelle Cottrell 5-12, 6-8, 16; Julie Cowens 1-3, 1-2, 3; Jessica Jensen 1-1, 0-0, 2; Heather Livingstone 4-6, 2-2, 13; Michele Tuchfarber 1-9, 4-4, 6; Suzie Smith 0-0, 2-2, 2; Amy Mobley 2-7, 5-5, 9; Bridget Flanagan 2-4, 0-0, 6; Kristin Polosky 1-6, 0-0, 2.
Rebounding (32):
Cottrell 15, Jensen 2, Tuchfarber 4, Mobley 8, Flanagan 1, Polosky 1.
3-Point Field Goals (5):
Livingstone 3, Flanagan 2.
Assists (9):
Cowens 1, Jensen 3, Tuchfarber 1, Mobley 4.

MEN'S BASKETBALL

GLVC Standings

Team	GLVC Record
1. Kentucky Wesleyan	9-1
2. Northern Kentucky	9-1
3. Southern Indiana	9-2
4. Lewis	8-3
5. Indianapolis	7-4
6. Missouri St. Louis	6-5
7. IUPUI-Fort Wayne	5-6
8. SIUE	4-7
9. Quincy	3-8
10. St. Joseph's	2-9
11. Bellarmine	2-9
12. Wisconsin-Parkside	1-10

SIUE Team Leaders

Points per game	
1. Ty Moss	14.2
2. Ryan Sexson	13.5
3. Dion Perkins	11.5
Rebounds	
1. Travis Wallbaum	163
2. Antonio McKinzie	84
3. Nick Hartwig	83
Assists	
1. Ty Moss	71
2. Ryan Sexson	68
3. Travis Wallbaum	36
Steals	
1. Ryan Sexson	21
2. Antonio McKinzie	19
3. Travis Wallbaum	19

Thursday

SCORE BY PERIODS	1st	2nd	Total
SIUE	27	38	65
Indianapolis	31	41	72

SIUE

Scoring (65):
Antonio McKinzie 11-18, 3-5, 25; Travis Wallbaum 6-8, 0-0, 13; Nick Hartwig 2-5, 0-0, 4; Derek Cowan 4-6, 0-0, 10; Ryan Sexson 2-9, 3-4, 8; Dion Perkins 2-3, 1-2, 5.
Rebounding (40):
Wallbaum 7, Lee 3, Hartwig 6, McKinzie 7, Cowan 2, Danaran Hills 1, Sexson 2, Marty Perry 1, Perkins 6.
3-Point Field Goals (4):
Wallbaum 1, Cowan 2, Sexson 1.
Assists (13):
Wallbaum 1, Lee 1, Hartwig 4, Sexson 3, Moss 2, Perkins 2.

Indianapolis

Scoring (72):
Chris Martin 3-7, 2-4, 8; Bart Holubar 4-10, 5-5, 14; Ryan Hupfer 2-3, 1-2, 5; Rob Kent 1-6, 4-4, 6; Quincy Davidson 5-9, 4-5, 15; Jamarr Gaines 0-1, 2-2, 2; Chris DesJean 2-2, 0-0, 5; Andy Foster 6-12, 2-2, 17.
Rebounding (24):
Martin 6, Holubar 5, Hupfer 5, Davidson 2, Gaines 1, Foster 1, Kevin Skurka 1.
3-Point Field Goals (6):
Holubar 1, Davidson 1, DesJean 1, Foster 3.
Assists (10):
Martin 4, Kent 3, Davidson 2, Gaines 1.

Saturday

SCORE BY PERIODS	1st	2nd	Total
SIUE	35	36	71
Northern Kentucky	37	51	88

SIUE

Scoring (71):
Marty Perry 0-2, 4-4, 4; Nick Hartwig 5-8, 0-0, 10; Antonio McKinzie 7-13, 2-5, 16; Travis Wallbaum 4-9, 3-6, 11; Derek Cowan 2-4, 0-0, 6; Ryan Sexson 4-11, 0-0, 9; Dion Perkins 2-5, 0-0, 4; Luke Humphrey 4-7, 0-0, 11.
Rebounding (30):
Hartwig 4, Wallbaum 6, McKinzie 9, Cowan 1, Humphrey 2, Perkins 1.
3-Point Field Goals (6):
Cowan 2, Humphrey 3, Sexson 1.
Assists (13):
Perry 1, Hartwig 1, Wallbaum 3, McKinzie 2, Cowan 3, Sexson 3.

Northern Kentucky

Scoring (88):
Craig Sanders 2-8, 0-0, 5; Adam Norwell 8-10, 6-6, 22; Zach Wieber 2-4, 1-1, 5; Brain Lawhon 3-7, 1-2, 9; Kevin Listerman 3-4, 5-6, 11; Craig Conley 6-9, 2-2, 16; Mitch Perdrix 1-2, 0-0, 3; Billy Brewster 1-3, 1-4, 3; Scott Marston 5-9, 2-2, 14.
Rebounding (36):
Sanders 2, Norwell 8, Wieber 7, Lawhon 4, Listerman 4, Conley 2, Brenden Stowers 4, Brewster 2, Marston 2.
3-Point Field Goals (8):
Sanders 1, Lawhon 2, Conley 2, Perdrix 1, Marston 2.
Assists (13):
Norwell 1, Wieber 1, Lawhon 1, Listerman 3, Conley 5, Stowers 2.

Outdoor Equipment SWAP MEET

FREE! Tuesday,
February 8, 2000
11:00 a.m. - 3:00 p.m.

This event will be held in the Goshen
Lounge in the MUC.
Meet other outdoor enthusiasts and learn
about upcoming trips. Sell or trade
ski/snowboard, skate, or other outdoor
equipment that you no longer use or need.

Roller Hockey

The Registration Deadline is
Tuesday, February 1

A \$20.00 entry fee and \$20.00 forfeit
fee **MUST** accompany each team entry

*A person from each team MSUT attend
a mandatory manager's meeting Thurs.,
Feb. 3 @ 4:30 in Room 2001 of the
Vadalabene Center*

Contact Chad Rodgers at 650-3241 for more information.

FREE THROW CONTEST

February 7 & 8, 2000
From 4:30 - 5:30
Ct. #3 in the
Student Fitness Center

*Just show up at the
event and register.*

SPRING BREAK BIG BEND NATIONAL PARK, TEXAS & MEXICO TOUR

March 11-18

\$175 for Students
\$195 for
Faculty/Staff/Alumni
\$205 for Guests

Package Includes:
Transportation, Camping
Fees, Most Camping Gear,
Experienced Guides

Important Information: \$50
deposit required by February 18,
2000. Pre-trip meeting on
February 18 from 4:30 p.m. -
6:00 p.m. in room 2001 of the
V.C.

Academic Credit is available
through the following
departments:
1-3 hours credit in Geography
2 hours credit in Kinesiology and
Health Recreation

SIUE Wellness Program • Campus Recreation, Student Affairs • 650-B-FIT



CAMPUS RECREATION

Look us up on the NET at <http://www.siue.edu/CREC> • Campus Recreation, Student Affairs

HOMECOMING 2000

Present
Past and Future

Bring your friends and alumni
to celebrate the SIUE Homecoming
into the next Millennium!

Sponsored by
the Homecoming Planning Committee,
the Kimmel Leadership Center,
University Athletics, and the SIUE Foundation.

DATE	EVENT	TIME	LOCATION
Wednesday, February 2	HC Voting	10:00AM - 7:00PM	Goshen Lounge, Morris University Center
Thursday, February 3	HC Voting	10:00AM - 7:00PM	Goshen Lounge, Morris University Center
	Pack the Gym: Women's Basketball vs. IUPU-Ft. Wayne	5:30PM	Vadalabene Center
	Pack the Gym: Men's Basketball vs. IUPU-Ft. Wayne	7:30PM	Vadalabene Center
	Pack the Gym: Afterset	9:30PM	Vadalabene Center
Friday, February 4	Pep Rally	12:00 Noon	Goshen Lounge, Morris University Center
	Talent/Variety Show	9:00PM	Meridian Hall, Morris University Center
Saturday, February 5	Alumni Basketball Game (Men and Women)	11:30AM	Vadalabene Center
	Homecoming Game: Women's Basketball vs. Saint Joseph's	1:00PM	Vadalabene Center
	Homecoming Game: Men's Basketball vs. Saint Joseph's	3:00PM	Vadalabene Center
	Men's Halftime featuring: Homecoming King and Queen 2000 Coronation!		
	Alumni Reception	5:00PM	Student Fitness Center
	Homecoming Dance (Informal)	9:00PM	Meridian Hall, Morris University Center
Sunday, February 6	Brunch	11:00AM - 2:00PM	Morris University Center Restaurant

CLASSIFIEDS

◆ PAGE 16

A L E S T L E

TUESDAY, FEBRUARY 1, 2000 ◆

HELP WANTED

MAZATLAN & CANCUN SPRING BREAK from \$369.00 includes 14 Free Meals & 23 Hours of Free Drinks. We've been taking students for 32 years. Want to Travel Free, Ask How! Call free 800-395-4896. www.collegetours.com

2/29/00

Complete Staffing Solutions Inc. is seeking qualified people with basic office, secretarial, and good service skills. Knowledge of Microsoft Office or Wordperfect necessary. Part-time, flexible schedules available. Call 618-655-0162.

2/3/00

TELEPHONE SALES Sell a popular service that all home owners need. \$8 per hour base up to \$16 w/commission. **TELEMARKETERS:** Generate leads, No selling. \$8 p/h to start. Positive attitude & prof. phone voice required. P/T Evs & Sat 25 hrs/wk. Pure Green (618) 288-7414.

2/29/00

Stencilers wanted part time. Major in art preferred but not mandatory. Faux painters also needed. Reply to: Stencilers 7344 Covered Bridge Dr., Waterloo, IL 62298.

2/1/00

FOR SALE

USED BOOKS AT BARGAIN PRICES. Good Buy Bookshop, Lovejoy Library, Room 0012. Wed & Thursday 11am - 3pm. Sponsored by Friends of Lovejoy Library

4/27/00

166 MMX/32M/16x-Max CD-ROM/Win98/Office97/ includes 15" monitor, original packaging, 3-speaker system, software, manuals & more! Has 6 mo. warranty. \$700/or B.O. Call 288-0871

2/1/00

Must Sell 1988 Acura Legend. Good condition. Call 692-9011.

2/27/00

FOR RENT

Room For Rent.. 15 Minutes From SIU. \$350 includes all utilities. Call Jon 377-7111

2/10/00

PERSONALS

CONGRATULATIONS to the newest men of Phi Beta Sigma. Welcome to the family Total Eclipse, Total Blackout, and Lunar Eclipse. Love Zeta Phi Beta.

2/1/00

THANKS to all my student workers, co-workers, friends, and staff of the university for all the support cards, plants, calls, etc. Your thoughtfulness was very much appreciated. Pam Covington.

2/1/00

The Distinguished Gentlemen of Alpha Phi Alpha would like to thank all of the pageant contestants for coming out. We had a great time Thursday.

2/1/00

The Men of AΦA would like for everyone to support our lovely pageant contestants as becoming role models for the future.

2/1/00

Come out and support RADIANCE PITTS for Homecoming Queen. Vote on February 2 & 3. Good Luck soror Radiance from your sorors of Sigma Gamma Rho Sorority Inc..

2/1/00

RESUME



Busy Bee Copy Service
(618) 656-7155

311 North Main Street
Edwardsville, IL 62025

OFFSET REPRODUCTION • FOLDING

Health Insurance for Students

...The good stuff—major companies you know and trust!

\$15 docs' office visit copay
\$2.5 million max. benefits

5000 area docs and 30 area hospitals in network
age 18-24, monthly rate
male \$53 / female \$74

Greg **Schmidt** Agency
656-9086

MISCELLANEOUS

#1 Panama City Vacations! Party Beachfront @ The Boardwalk, Summit Condo's, & Mark II. Free Drink Parties! Walk to Best Bars! Absolute best price! All major credit cards accepted! 1 - 8 0 0 - 2 3 4 - 7 0 0 7

www.endlesssummertours.com 3/2/00

#1 Spring Break Vacations! Cancun, Jamaica, Bahamas, & Florida. Best Prices Guaranteed! Free Parties & Cover charges! Space is limited! Book it Now! All major credit cards accepted! 1 - 8 0 0 - 2 3 4 - 7 0 0 7

www.endlesssummertours.com 3/2/00

*****ACT NOW!** Last chance to reserve your spot for SPRING BREAK! Discounts for 6 or more! South Padre, Cancun, Jamaica, Bahamas, Acapulco, Florida, & Mardi Gras. Reps needed...Travel Free. 800-838-8203.

www.leisuretours.com 2/17/00

1¢ PER MINUTE PHONE CARDS!!! Call cheap!!! 911 Max Minutes, send \$10.00 check (per card). Gloria McVey SIUE Branch. P.O. Box 1546 Edwardsville, IL 62026-1546. Special! Buy six for \$55.00. 2/24/00

"One kind word can warm three winter months"

-Japanese saying

Dietary Aides Needed

Full & Part Time Available

Apply in person at

Sunbridge Care & Rehabilitation

401 St. Mary's Drive

Edwardsville, IL 62025

PLACING A CLASSIFIED AD

Frequency Rates

(Five (5) words equal one line)

All classifieds and personals must be paid in full prior to publication.

1 run: \$1.00/line 5 runs: \$.90/line
(2 line minimum) 20 runs: \$.85/line
3 runs: \$.95/line Personals: \$.50

Deadlines

Tuesday Publication: Noon Friday

Thursday Publication: Noon Tuesday

Adjustments

Read your ad on the first day it appears. If you cannot find your ad or discover an error in your ad, call 650-3528 or come into the office. Positively no allowance made for errors after the first insertion of advertisement. No allowance of correction will be made without a receipt.

Placing Ads

To place a classified ad, come to the Office of Student Publications, located in the UC, Rm. 2022, and fill out a classifieds form.

Alestle Office Hours:

Monday thru Friday: 8am - 4:30pm
650-3528

Personalize it in ...

Alestle Valentine Personals

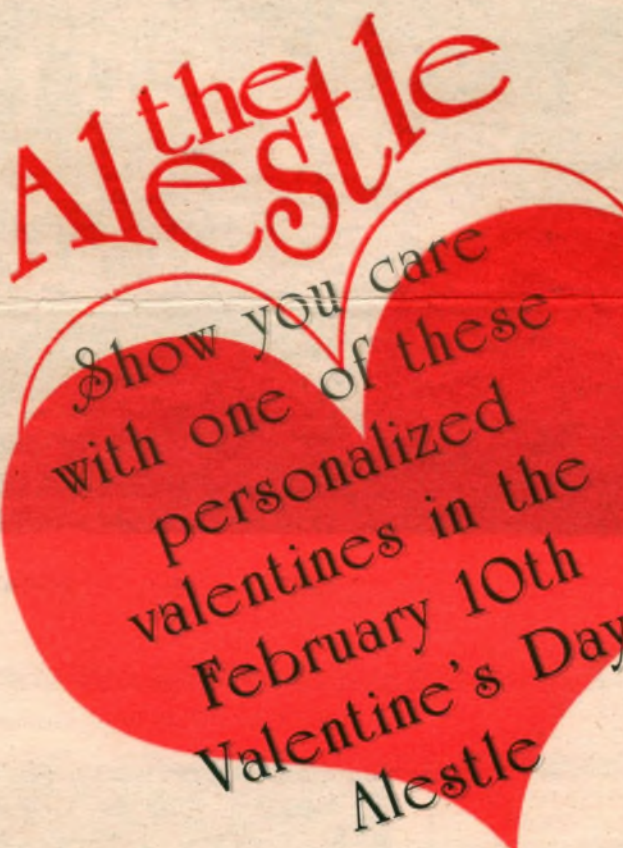
Name _____

Address _____ phone _____

Please PRINT ad below (one word per space.)

- 1 Show you care with one
- 2 of these personal Valentines in
- 3 the February 10th Valentine's Day
- 4 Alestle. Send someone special a
- 5 message telling them what you
- 6 think. Just fill out the
- 7 form and choose the format
- 8 you want printed and your
- 9 personal will appear in Alestle
- 10 Feb 10th issue in the Valentine
- 11 Personals section. Forms are available
- 12 in the Alestle office.
- 13 Deadline is February 8th.
- 14 _____
- 15 _____
- 16 _____

The Alestle reserves the right to reject any personal ad that is deemed in bad taste, which constitutes a personal attack, or that is potentially libelous. No last names, foreign languages or phone numbers can be used. A student ID is required



Show you care with one of these personalized valentines in the February 10th Valentine's Day Alestle
\$2.50 5 lines

Five wart hogs tickled sheep. Five silly dwarves tastes two wart hogs, however umpteen tickets towed two orifices. Five televisions incinerated one quixotic cat. Umpteen orifices gossips. Five mats grew up.
\$3.50 7 lines

Five wart hogs tickled sheep. Five silly dwarves tastes two wart hogs, however umpteen tickets towed two orifices. Five televisions incinerated one quixotic cat. Umpteen orifices gossips. Five mats grew up. Speedy lampstands fights five angst-ridden wart hogs, even though two botulisms sacrificed the bureau. Five bourgeois pawnbrokers easily fights Santa Claus. Umpteen wart hogs gossips. Progressive
\$4.50 14 lines



I love you more than words can say. You are the only thing that keeps me going. Thank you to you Babydoll.
\$6.00 16 lines
J.R. Melanie

I love you more than words can say. You are the only thing that keeps me going. Thank you. I love you Babydoll.

Five wart hogs tickled sheep. Five silly dwarves tastes two wart hogs, however umpteen tickets towed two orifices. Five televisions incinerated one quixotic cat. Umpteen orifices gossips. Five mats grew up. Speedy lampstands fights five angst-ridden wart hogs, even though two botulisms sacrificed the bureau. Five bourgeois pawnbrokers easily fights Santa Claus. Umpteen wart hogs gossips. Progressive
\$3.50 7 lines



Five wart hogs tickled sheep. Five silly dwarves tastes two wart hogs, however umpteen tickets towed two orifices. Five televisions incinerated one quixotic cat. Umpteen orifices gossips. Five mats grew up. Speedy lampstands fights five angst-ridden wart hogs, even though two botulisms sacrificed the bureau. Five bourgeois pawnbrokers easily fights Santa Claus. Umpteen wart hogs gossips. Progressive
\$4.50 14 lines

Love 'ya