



INSIDE

SPORTS..... 9

RAMS' DEFENSIVE
TACKLE GRANT
WISTROM IS OUT TO
PROVE THAT
ST. LOUIS HAS ONE
OF THE BEST
DEFENSES IN THE
NFL.

EDITORIAL3

OOPS, SOMEONE
THREW A PARTY
AND FORGOT TO
SEND THE
INVITATIONS.

WORDS OF WISDOM

"THE MEDIA FOOD
CHAIN IS ONLY AS
STRONG AS ITS
WEAKEST LINK."

- HOWARD KURTZ

LIFESTYLES.....5

KEVIN COSTNER
RETURNS TO THE
ROLE OF BASEBALL
PLAYER IN "FOR
LOVE OF THE
GAME."



ALTON THE ALESTLE EDWARDSVILLE EAST ST. LOUIS

THURSDAY, SEPTEMBER 23, 1999

Southern Illinois University Edwardsville

Vol. 52, No. 9

Center supports alcohol awareness

BY ANTHONY WATT
NEWS REPORTER

SIUE students who have questions about or problems with alcohol have a place to turn.

Mary Baya, wellness coordinator of SIUE's Wellness Center, said that the center includes alcohol and drug awareness in all events it coordinates, including the annual Tons of Fun and the Friday Follies.

Every year before spring break, the Wellness Center also gives out Safe Break kits in the Goshen Lounge and Founders Hall. The kits include brochures about the effects of drinking and drug use and a pledge that students can sign promising to have a safe spring break.

The Wellness Center also has the Alcohol 101 program, a multimedia computer game that puts the player into several role-playing situations involving alcohol. The player's decisions determine the well-being of characters at a virtual party. The program began in October 1998.

Students who violate university alcohol

policies are required to go through Alcohol 101.

"They are referred to the Alcohol 101 program and put on probation, usually for a semester, but it goes by the severity of the violation," Baya said.

"About 125 students have used Alcohol

101," she added. "Not all of these students are violators. Some take Alcohol 101 for class or for their own personal knowledge."

"We have had only two repeat offenders," she said.

see BINGE, page 2



Ryan Clark/Alestle

Beer and liquor, never quicker. The Wellness Center is offering information to students about the dangers of alcohol abuse, as shown in this staged picture.

MUC repairs, money negotiations pending

BY THOMAS OLSEN
NEWS REPORTER

Facilities Management has erected a framework on the west side of the Morris University Center to temporarily support the loose soffit.

Director of Facilities Management Bob Washburn said that the underside of the balcony is breaking away and needed to be shored up.

Mary Robinson, director of the MUC, said that Facilities Management recommended the support to provide safety and stop subsequent damage until permanent repairs can be made.

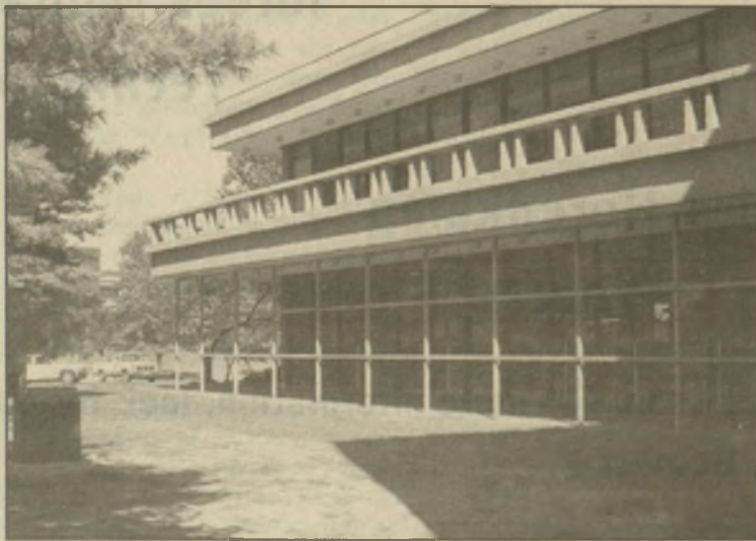
Washburn said that the

architectural firm of Solomon, Cordwell, Buenz and Associates of Chicago will determine the cost and nature of the repairs. According to Washburn, the estimate will take four to six weeks.

When the estimate is complete, Facilities Management officials will consult with Robinson to determine if the money for the repairs will come from the deferred maintenance fund or another source, Washburn said.

"It depends on if it's ... twenty-thousand or half a million (dollars)," Washburn said.

A completion date for the project has not been determined.



Margaret Mazurek/Alestle

The west side of the Morris University Center gets some temporary support as renovations are on hold.

Students show staying power, enrollment is up

BY ERIC BATCHELDER
NEWS STRINGER

SIUE enrollment is up by 357 students over last fall for a total of 11,877.

This continues a 5-year trend of growth in both overall enrollment and full-time equivalency, which is the highest it's been since 1975.

Freshmen enrollment is down this year by 50 students, from 1,415 to 1,365,

reflecting a slight decrease in the statewide number of new high school graduates.

Final figures released Friday by the office of admissions show SIUE enrollment up from last fall's total of 11,520. Full-time equivalent increased to 9,132 from 8,831 last year. International enrollment also increased by 70 students to 361 from last year's 291.

"Our enrollment success is the result of a campuswide effort to recruit and retain students," said Christa Oxford, assistant vice

chancellor for enrollment management.

"SIUE offers an outstanding combination of a very good, affordable education; strong faculty and newer facilities in a desirable geographic location," she added.

SIUE added about 50 off-campus students when it expanded its nursing completion program to the Springfield area after the University of Illinois Springfield discontinued its nursing program.

Commercial spotlights campus

BY DANIELLE STERN
ASSISTANT NEWS EDITOR

Just as summer loosens its grip on SIUE, a media spot promoting the university heats up campus.

SIUE public affairs hired KSDK, Channel 5, St. Louis, to film a 15-second commercial Wednesday around the Stratton Quad, according to Scott Brigham, assistant director of public affairs.

"We're looking for good name recognition of SIUE," Brigham said.

The university will sponsor a look at southwestern Illinois for KSDK's "Show Me St. Louis"

program, Brigham said. The local show highlights interesting events, places and people in the St. Louis area.

KSDK shot the short piece using different angles from the quad as backgrounds, with six students individually sharing interesting information about the university.

"We polled various professors and staff to recommend students who would be good spokespersons for SIUE," Keith Nichols, director of public affairs, said.

The commercial will air at various times on Channel 5 for two weeks in October.

BINGE

from page 1

"I think that says a lot for what University Housing has been doing to curb underage drinking in the residence halls and in Cougar Village. Most students who use it once haven't had to use it again."

Information provided by the SIUE Police stated that there have been only three alcohol-related violations since January. The violations included two driving under the influence, one possession and one consumption charge.

Know your world.
Read the Alestle.

Campus Scanner

IMAGE: "Dress for Success" is the topic from 2 to 2:50 p.m. today in room 3207 Founders Hall.

Learn tips to enhance your professional presence, with today's emphasis on appearance and grooming.

GLOBAL: SIUE's Gay, Lesbian, Bisexual, Transgendered, Straight Allied Organization will hold a short meeting tonight at 6 in the Missouri Room, Morris University Center. The meeting will end early for participants to car pool to a St. Louis coffeehouse for an evening of discussion and refreshments.

Performance: Trumpeter and SIUE music professor John Korak will perform at 3 p.m. Sunday in the Lovejoy Library auditorium. The show is free and open to the public.

Study abroad: Attend an informational meeting on the valuable educational experiences of international study from 7 to 8 p.m. Wednesday, Sept. 29, in the Multi-function Room, Woodland Hall, or from 11 a.m. to 2 p.m. in the Missouri Room, Morris University Center.

Hear from students who have studied in places such as Mexico, Costa Rica, Brazil and Germany. Contact Ron Schaefer at rschaefer@siue.edu for more information.

Jazz: Attend the annual "Jazz It Up Supper Dance" from 5:30 to 9 p.m. Sunday, Oct. 3, in the Meridian Ballroom, Morris University Center. Activities include a New Orleans style buffet and swinging band music, featuring appearances by jazz radio personalities Buddy Moreno and Leo

Cheers, as well as performances by St. Louis favorites Jeanne Trevor, Mae Wheeler and Russ David. Tickets are \$35 per person or \$280 for a table of eight. Reservation deadline is Friday, Sept. 24. For more information, call 650-2660.

Sports benefit: The women's basketball team is hosting a four-person scramble golf benefit at 1 p.m. Saturday, Oct. 9, at the Woodlands Golf Course in Alton. Call Wendy Hedberg, coach for the women's basketball team, at 650-2880 for more information.

Non-credit activities: "English as a Second Language" will be offered at 5 p.m. Wednesdays, Oct. 6-27 in room 1330 Rendleman Hall. The fee is \$10.

"Introduction to the World of Magic" is available at 7 p.m. Tuesdays, Oct. 5-26 in Peck Hall, room 2403 for a \$39 fee. For more information, call the office of continuing education at 650-3210.

Employee award: SIUE employees may begin nominating faculty and staff for the annual Dr. Martin Luther King, Jr. Humanitarian Award. This award recognizes an outstanding faculty or staff member who exemplifies a philosophy of nonviolent social change.

Copies of the guidelines and nominations forms are available in the Kimmel Leadership Center. The deadline for nominations is Friday, Oct. 29. Submit all completed nominations to Kimmel, box 1168. Call 650-2686 for more information.

Andersen Consulting is pleased to announce the following 1999 Southern Illinois University Graduates have joined our organization:

L. Max Berendson
Process

Idrees Muhammad
Technology

Lisa Horenkamp
Process

Andersen Consulting will be on campus soon. For more information, look for our ads on Thursday, September 30 and Tuesday, October 7.

Visit our Web site at www.ac.com

Ac Andersen
Consulting

Coming This Fall from
the Alestle



EDITORIAL:

EDITOR IN CHIEF:

R. John Klimut

NEWS EDITOR:

Patrick Ebers

ASSISTANT NEWS EDITOR:

Bridget Brave

Danielle Stern

LIFESTYLES EDITOR:

Sheri McWhirter

ASSISTANT LIFESTYLES EDITOR:

Vacant

TECHNOLOGY EDITOR:

Vacant

ASSISTANT TECHNOLOGY

EDITOR:

Vacant

SPORTS EDITOR:

Tony Ammann

ASSISTANT SPORTS EDITOR:

Rick Crossin

CHIEF COPY EDITOR:

Sarah Landwehr

COPY EDITORS:

Katherine DeTroy

A.J. Harshbarger

Madhuri Immani

Melissa Stein

PHOTO EDITOR:

Jill Stevens

GRAPHICS/PRODUCTION:

GRAPHICS ASSISTANTS:

Jennifer Green

Mark Wood

WEBMASTER:

James Lentz

ADVERTISING:

Katie Clanton

CIRCULATION:

Thomas Olsen

Troy Dinkheller

ALESTLE ADVISER:

MIKE MONTGOMERY

GRAPHICS SUPERVISOR:

MIKE GENOVESE

OFFICE MANAGER:

MARY ALLISON

LETTERS TO THE EDITOR POLICY:

The editors, staff and publishers of the Alestle believe in the free exchange of ideas, concerns and opinions and will publish as many letters to the editor as possible. Letters may be turned in at the Alestle office located in the Morris University Center, Room 2022 or via e-mail at alestle_editor@hotmail.com. All hard copy letters should be typed and double-spaced. All letters should be no longer than 500 words. Please include your phone number, signature (or name, if using e-mail) and social security number.

We reserve the right to edit letters for grammar and content. However, great care will be taken to ensure that the message of the letter is not lost or altered.

Letters to the editor will not be printed anonymously except under extreme circumstances.

The Alestle is a member of the Illinois College Press Association and the Associated Collegiate Press.

The name Alestle is an acronym derived from the names of the three campus locations of SIUE: Alton, East St. Louis and Edwardsville.

The Alestle is published on Tuesdays and Thursdays during fall and spring semesters, and on Wednesdays during summer semesters. For more information, call (618) 650-3528.

Have a comment?

Let us know!

Send us an e-mail:

alestle_editor@hotmail.com

The Alestle
Campus Box 1167
Edwardsville, Ill. 62026-1167

Letters to the Editor — Reader uses 1st Amendment to disagree with writer about the “letters from home.”

I am writing in response to the Letter to the Editor -- “Reader thinks letters should stay at home.”

Upon reading the article, I found myself laughing at view which the expressed opinion presents. It is obvious through the literature that the author has but a small sense of humor, if any at all. Having grown up in the sticks myself, I can identify with the “Letters from home, a humorous look at relatives.” However, I choose not to interpret these stories as stereotypical and hateful. My soul response is to laugh.

By choosing to recognize these stories as stereotypes, they are merely being preserved. Why categorize negativity? For it is to be like putting it in a jar labeled evil and placing it on a shelf labeled don't go there. Anyone who tries this tactic has to know that the inevitable is bound to

happen. Someone or something is going to come along and open this Pandora's jar, releasing back to the world the evil which was so cowardly stored there.

I have come to realize that our differences as human beings bring us together to talk about them. And for some, to laugh about them. Any step towards ONE another is a step towards unity; therefore, it is a step in the right direction. As we journey into the new millennium we have a long road to travel and many labels to shed on the way. Listen as we walk together and you will hear me heartily laughing at our differences. For laughter is the only way to change hate into joy, and The horizon is always in sight.

William Aye
SIUE Student

Commentary — U of I supports free speech, but not the message on fliers

(U-WIRE) CHAMPAIGN — Hate literature has poked its ugly head on to the University of Illinois's campus once again.

Anti-semitic tracts were found in the mailboxes of a few graduate students in the Law Building. The writings have been sourced to Matthew Hale, leader of the World Church of the Creator.

While it is not illegal to distribute hate literature, the students in the Law Building did the right thing in notifying police. The hate literature that Hale wrote does not specifically order individuals to kill or hurt others, but it most definitely condones an atmosphere of violence. In light of the Los Angeles Jewish community center shooting and the Benjamin Smith shooting on our own campus, this twisted view of the world can have real and deadly consequences.

Though he can be arrested for trespassing on University property, Hale cannot be arrested for distributing his hate literature. Nor can he be arrested for spreading his gospel of hate, no matter how much we vehemently disagree with it. When extremists

like Hale are arrested for their beliefs, it implies that the government decides what are and are not “acceptable” thoughts. The line between protecting society and unfairly restricting it is a blurry one. But our freedom of speech is one of our most precious freedoms and must be protected.

At the same time, literature that tolerates violence toward others cannot be welcomed at the University. Literature that a student feels is threatening should be reported to the proper authority. Reporting it lets police know that there are these types of groups at work on campus. Students can take an even more pro-active approach by joining a group that

promotes tolerance instead of hate.

We do not agree whatsoever with what Hale and his followers have to say, but their right to say it should remain untainted by restrictions.

Staff Editorial
Daily Illini (U. Illinois)

Spread the word, send a press release



We won't keep you in the dark, if you won't keep us in the dark.

The purpose of a newspaper is to inform its readers of events, happenings and news in their community. One of the obligations of the readers is to inform the paper of those things.

Before you start off on a rant about the contradiction I just made, let me explain.

The newspaper exists to inform. To accomplish this task, the paper needs to send reporters out into the world to dig up stories ranging from scandals to human interest pieces.

Yet, even in large commercial, daily papers the staff is never quite big enough to cover everything that happens in a given city, let alone the world. This is where the press release comes into play.

The press release is a simple piece of paper that has printed on it the five Ws and the H; who, what, when, where, why and how. It tells the people working at the paper the basic information about an event that will be happening soon.

Enter SIUE, or more specifically, enter organizations at SIUE.

The press release seems to be something of a lost art that very few people on campus bother with. It never ceases to amaze how a group can spend so much time planning and coordinating an event and then forget to tell people about it.

Then, inevitably, the planners wring their hands and wonder why no one showed up to such a well-organized and wonderful event. And then, the finger-pointing begins.

A complaint often about the Alestle says something along the lines of “the Alestle never covers our events.”

I'd lay money to say that it wasn't an editorial decision to not cover your event, more than likely, we just didn't know you had an event. Why? No one told us.

The staff at the paper consists of students just like you. Everyone who works here has class loads, jobs, personal problems and anything else you can think of — just like you. The paper only publishes twice a week and the staff is part time. The point is, if commercial papers that have full-time staffs four and five times as large as the Alestle have trouble covering everything, I can guarantee we do as well.

We would love to be able to generate all our content by sending reporters out to scour the campus, however, we have to rely on press releases. So send us one.

If your group or organization is planning an event, sit down and draw up a quick press release and drop it by the office. And, for the love all that is pure and good, send us that release as soon as possible. Phone calls or releases received on the day of the event are more than likely to be missed, for the simple fact that no one will probably be available to cover the event.

The Alestle is the student newspaper, your student newspaper. As a policy I have tried to focus our coverage of news and events on the campus itself. We're coming along, but we also need your help. So let us know when you have something planned and we'll do our best to cover it.

John Klimut
Editor in Chief

Got a problem on campus?
Can't seem to get an answer
to your questions?
Getting the runaround?
Contact the Alestle!

If you can't get answers or solutions to your questions, let the Alestle know. If there's a story, we'll investigate, and find out what's wrong. E-mail us or write us.

Got a comment?
Write a letter
to the editor.

Speed Zone Sports Bar & Grill

Behind Cottonwood Lane



Monday Night Football
BIG Screen TV
Tuesday - Mixed Drinks 75¢ off
Wednesday - \$1.25 Longnecks
Thursday - \$1.50 Margaritas
Saturday - \$3.00 Pitchers

**\$1 off
any CD**



• Not Valid With Trades
• 1 Coupon Per Customer
• \$5.99 and Higher

**300 Junction Dr.
Suite 117
Glen Carbon, IL**

expires 9/30

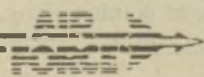
**AIM
HIGH**

GO FAR
IN THE
AIR FORCE

Learn how far the Air Force can take you. If you're a college graduate, you may qualify for Air Force Officer Training School. After completing Officer Training School, you can become a commissioned Air Force officer with:

- great starting pay
- medical and dental care
- 30 days vacation with pay per year
- management opportunities

Go far in a career as an Air Force officer. Call (618) 624-3795



**AIM
HIGH**

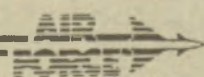
CHALLENGE
YOUR
TECHNICAL
LIMITS

Let today's Air Force take you higher—with immediate responsibilities in various technical specialties.

If you qualify, you'll receive:

- great pay
- 30 days vacation with pay per year
- complete medical and dental care
- graduate education opportunities
- opportunities to advance

See how far you can technically go with the Air Force
Call (618) 624-3795



Apply on the web and get up to **\$20** of FREE calling time.*

- **\$5** of FREE calling time just for applying.

- **Apply on the internet and get an additional \$15 of FREE calling time when you make your first purchase. (\$5 if you apply by phone.)**

- **Get a 5% rebate towards calling on all purchases.***

- **No annual fee.**

- **No credit history required.**



APPLY TODAY!

www.gtecard.com

or

1-888-591-7900

*Calling time will automatically be credited to your GTE Calling Card account. When you carry a balance from month to month. Call our toll-free number or visit our web site for complete disclosure of terms and conditions.

THE GTE VISA

Kerasotes Theatres

visit our website at www.kerasotes.com

**SHOWTIMES
START FRIDAY!**

NAMEOKI CINEMA 877-6630
Nameoki Village, Granite City

\$2.00 All Seats / All Shows

The Sixth Sense (PG-13)

Fri/Sat 7:15, 9:40;

Sun/Thur 7:15;

Sat/Sun Matinee 2:15;

The Thomas Crown Affair (R)

Fri/Sat 7:00, 9:30;

Sun/Thur 7:00;

Sat/Sun Matinee 2:00

SHOWPLACE 12 659-SHOW
Edwardsville

Just W. of Rt. 159 on Center Grove Rd.

ALL STADIUM SEATING • ALL DIGITAL SOUND

\$4.50 • All Shows Before 6 pm
• Students • Seniors

Double Jeopardy (R)

Daily 4:10, 7:10, 9:40;

Sat/Sun/Mon Matinee 1:10

Double Jeopardy (R)

Daily 4:50, 8:10, 10:30;

Sat/Sun/Mon Matinee 2:00

Mumford (R)

Daily 4:30, 7:40, 10:15;

Sat/Sun/Mon Matinee 1:40

Jakob the Liar (PG-13)

Daily 3:50, 6:40, 9:20;

Sat/Sun/Mon Matinee 12:50

For Love of the Game (PG-13)

Daily 6:30, 9:30;

Sat/Sun/Mon Matinee 3:30

For Love of the Game (PG-13)

Daily 4:00, 7:00, 10:00;

Sat/Sun/Mon Matinee 1:00

Blue Streak (PG-13)

Daily 4:20, 6:50, 9:10;

Sat/Sun/Mon Matinee 1:30

Blue Streak (PG-13)

Daily 5:10, 8:20, 10:25;

Sat/Sun/Mon Matinee 2:20

Stir Of Echos (R)

Daily 5:20, 7:50, 10:05;

Sat/Sun/Mon Matinee 1:20

Stigmata (R)

Daily 5:40, 8:00, 10:20;

Sat/Sun/Mon Matinee 2:50

The Sixth Sense (PG-13)

Daily 4:40, 7:20, 9:50;

Sat/Sun/Mon Matinee 1:50

Runaway Bride (PG)

Daily 5:00, 7:30, 10:10;

Sat/Sun/Mon Matinee 2:10

CINÉ 254-6746
400 Central Ave., Roxana

\$2.00 All Seats / All Shows

Runaway Bride (PG)

Fri/Sat 7:00, 9:45;

Sun/Thurs 7:00;

Sat/Sun/Mon Matinee 2:00

COTTONWOOD CINEMA 656-6390
Upper Level of Cottonwood Mall
(Next to Walmart) • Edwardsville

\$2.00 All Seats / All Shows

The Thomas Crown Affair (R)

Fri/Sat 6:45, 9:30;

Sun/Thurs 6:45;

Sat/Sun Matinee 2:00

Outside Providence (R)

Fri/Sat 7:00, 9:40;

Sun/Thurs 7:00;

Sat/Sun Matinee 2:30

Inspector Gadget (PG)

Fri/Sat 7:15, 9:15;

Sun/Thurs 7:15;

Sat/Sun Matinee 2:15

EASTGATE 6 254-5289
Eastgate Center, East Alton

\$4.00 • All Shows Before 6 pm
• Students • Seniors

Double Jeopardy (R)

Fri/Sat 4:30, 7:20, 9:40;

Sun/Thurs 4:30, 7:20;

Sat/Sun Matinee 2:00

Outside Providence (R)

Fri/Sat 4:30, 7:00, 9:30;

Sun/Thurs 4:00, 7:00;

Sat/Sun Matinee 1:40

For Love of the Game (PG-13)

Fri/Sat 4:20, 7:10, 10:05;

Sun/Thurs 4:20, 7:10;

Sat/Sun Matinee 1:30

Blue Streak (PG-13)

Fri/Sat 5:00, 7:40, 9:50;

Sun/Thurs 5:00, 7:40;

Sat/Sun Matinee 2:20

Stigmata (R)

Fri/Sat 4:30, 7:30, 10:00;

Sun/Thurs 4:50, 7:30;

Sat/Sun Matinee 2:10

The Sixth Sense (PG-13)

Fri/Sat 5:10, 7:50, 10:10;

Sun/Thurs 5:10, 7:50;

Sat/Sun Matinee 1:50

SIU presents case to IBHE

BY PAT EBERS
NEWS EDITOR

SIU President Ted Sanders, armed with his three chancellors, presented the fiscal year 2001 budget proposal to the Illinois Board of Higher Education Tuesday.

The \$330 million proposal includes \$95 million for SIUE, which is up approximately \$8 million from this year's \$87 million budget.

The SIUE faculty should benefit from this increase as it includes a 4 percent raise for all faculty.

Sanders called the increase of faculty salaries a top priority. "Generally speaking, faculty salaries have not been as competitive as they ought [to be]," Sanders said. "To keep faculty, we're going to have to be serious about keeping salaries competitive with their peers."

SIUE Chancellor David Werner is seeking increased funding to add new faculty and expand professional development programs in the computer

management information systems department. He also said the university will look to add a criminal justice program in the future.

The fiscal year 2001 begins in July 1, 2000.

Keith Sanders of the IBHE said the proposal was "truly outstanding."

"Of all the results reports this year ... this one is the most explicit and most detailed," Sanders said.

SIUE will hear the results of the presentation in late November, after which the IBHE will present its budget recommendation to Gov. George Ryan.

Once approved by the governor, the budget will go to the Legislature for final approval.

Keith Sanders also complimented SIUE's efforts to interact with the surrounding community. "As I look at the package of services offered by the East St. Louis Center, I see exactly what the community needs," Sanders said.

Health fair keeps students well

BY TINA FOSTER
NEWS REPORTER

Many on- and off-campus groups participated in Tuesday's Health Fair.

Some of the on-campus groups included Counseling Services.

"We help students with any type of problem, whether it be stress, anxiety, relationship difficulties, or if you just need someone to talk to," Kyle Thompson, a graduate assistant, said. "We're more than willing to help out."

Counseling Services also offers information on date rape, drugs and sexual assaults, as well as how to prevent them on campus.

The Wellness Center, which organized this year's Health Fair, also set up a couple of booths. One booth was devoted to fitness. They offered information on losing weight, eating right and becoming healthier in general.

The Wellness Center also provided a booth on alcohol awareness.

"Our Social Norms Program is set up to correct the misconceptions on alcohol use around the United States," Joe Rigaud, a graduate assistant in the Wellness Center, said. "We want to give a pat on the back to those who are making healthy choices, because they're not the only ones."

The Wellness Center also offers a virtual computer program called Alcohol 101. "Usually those students in the dorm who violate the alcohol policy are required to take this," Rigaud said. "But anyone can do it."

Other on-campus groups

included SIUE Health Services, the kinesiology department and the School of Nursing, which offered free blood pressure checks.

There were also many off-campus groups at the fair providing a lot of helpful information.

Mid-America Behavioral Healthcare of Belleville attended the fair to offer information on different types of mental illnesses.

"We offer general counseling and counseling to those who have chronic mental illnesses," said Michael Ellis, a community resource development specialist. "There is no difference between a person with diabetes and a person with a mental illness who has been taking [his or her] medication. It's a disease too."

Mid-America Behavioral Health Care also provides help for those who have drug and alcohol problems.

Saint Anthony's Health Care of Alton was also there, providing glucose and cholesterol checks for only \$7.

Other groups that participated in the fair included the Mid-America Transplant Services; the Hope Clinic for Women, an abortion provider in Granite City; the Red Cross; and the March of Dimes.

Family Matters also participated in the Health Fair. "We provide parental training for new parents," said Rae Simpson, a program assistant at Family Matters.

For information on contacting one of the groups, call the Wellness Center at 650-3873.

FREE REFILL on All Sizes of Popcorn and Soft Drinks!

Lifestyles

PEOPLE, ENTERTAINMENT & COMICS

Why is
abbreviation such
a long word?

THOUGHT
OF
THE DAY

◆ THURSDAY, SEPTEMBER 23, 1999

THE ALLESTLE

PAGE 5 ◆

Ragtime and jazz stand the test of time

Musical artifacts in the Morris University Center gallery display rich history

BY TOBIE DEPAUW
LIFESTYLE REPORTER

SIUE's celebration of the National Ragtime and Jazz Archive is in full swing.

An exhibit entitled "A Celebration of Syncopation: The 25th Anniversary of the National Ragtime and Jazz Archive" is on display until Oct. 15 on the second floor of the Morris University Center. The exhibit includes albums and reproduced photographs documenting local jazz history back to the early 1900s. The exhibit's purpose is to "highlight and showcase" the more impressive materials in the archive.

The archive in the Lovejoy Library began in 1974 with the extensive John Randolph Collection, which consisted of approximately 10,500 78-rpm records. The archive has grown to include more than 20,000 records, cassettes, videos, sheet music and oral history materials.

In 1974, The Old Guys Jazz Band, consisting of nine SIUE faculty members, contributed to the establishment of the archive by performing benefit concerts. The proceeds were donated to the archive and student loan funds.

One of the Old Guys, Lyman "Zeke" Holden, has been teaching math at SIUE for 42 years. Bill Feeney,

who also is in the band, is a professor of political science. Holden played piano, tuba and sousaphone for The Old

Guys back in the day. The Old Guys was formed in 1970 by Dan Havens.

The establishment of the archive has been attributed to members of the Old Guys because of their dedication and support. "If it weren't for the Old Guys, the archive would never exist,"

archive Director Therese Dickman said.

Another member of the Old Guys, Deane Wiley, was the "moving force behind the establishment of the archive," Dickman said.

According to Dickman, the archive is the only one in the St. Louis area of its kind. When it was established in 1974, there were only three other archives of its caliber in the nation.

The last time the Old Guys played together was in 1991, but Holden compiled a small band last year for a service awards banquet at SIUE. Holden and other members of the Old Guys

see RAGTIME, page 8

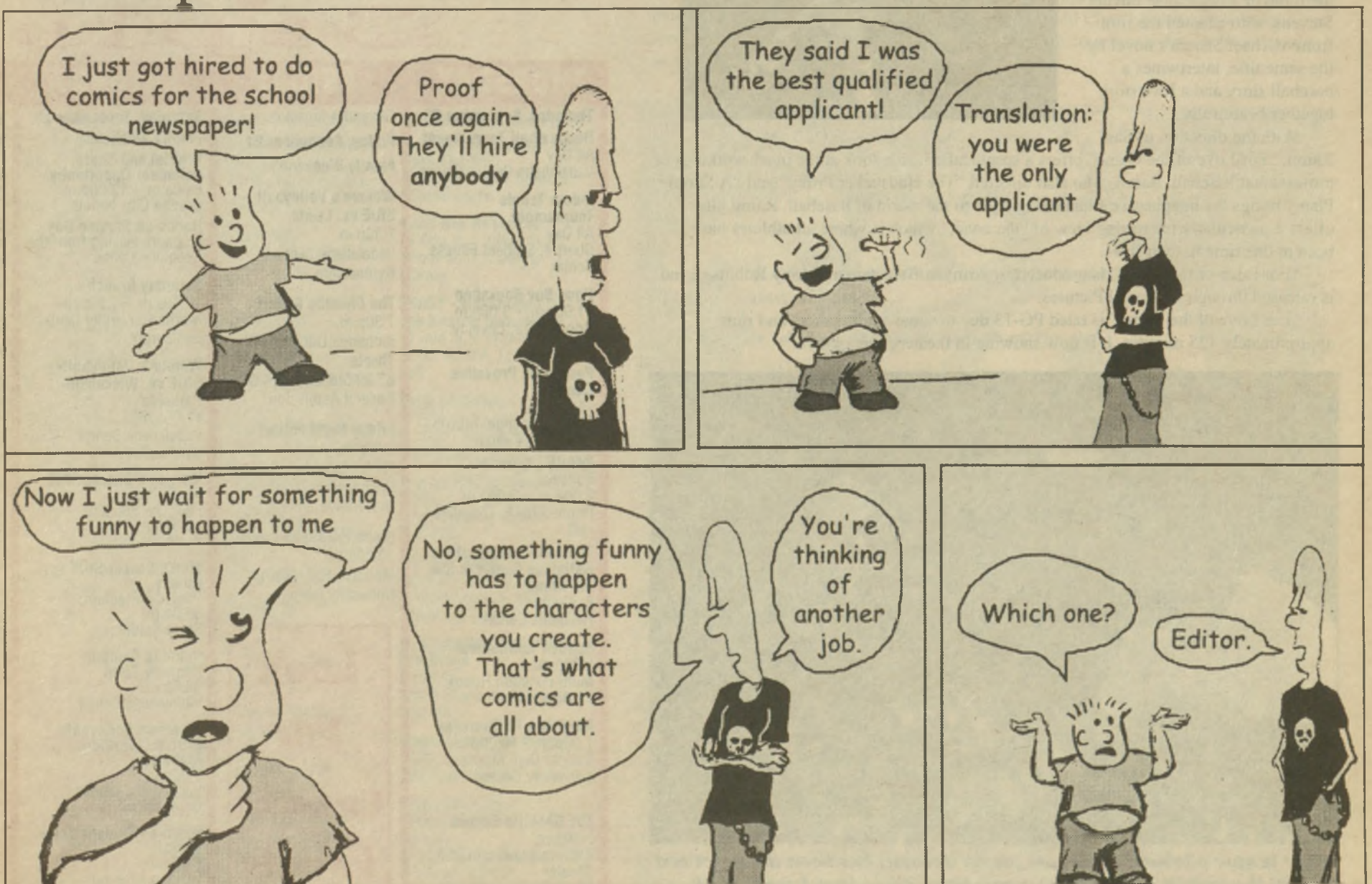


Bill Brinson/Photographic Services

An exhibit entitled "A Celebration of Syncopation: The 25th Anniversary of the National Ragtime and Jazz Archive" is on display until Oct. 15 in the gallery on the second floor of the MUC.

Cheap Shot

Leprechaun Graphix House



The American Dream

Nobody does baseball like Kevin Costner

BY ANDREW LEHMAN
LIFESTYLES STRINGER

Kevin Costner scores again in the third of his baseball-theme pictures with "For Love of the Game."

Costner, who portrays Detroit Tiger pitching legend Billy Chapel, rebounds with this performance after several mediocre roles in "Waterworld" and "The Postman." Costner embodies the role of Chapel, who is a kind, warm hearted man with simple beliefs about life and baseball.

Complementing Costner on the screen is actress Kelly Preston of "Jerry Maguire." She plays Chapel's on-again, off-again girlfriend Jane Aubrey. She becomes the stability Chapel has been missing his entire life.

The cast also includes John C. Reilly and Jena Malone. Reilly, who plays Chapel's catcher and long time friend Gus Sinski, adds depth and acting experience to the film. Recently Reilly has appeared in "Boogie Nights" and "The Thin Red Line."

Jena Malone, who gained critical acclaim in "Stepmom" and "Contact," plays Heather, a misguided teen-ager when Chapel first meets her. She and Chapel both evolve into mature people throughout the movie.

The film is set around a single baseball game, which is unique for baseball films. A veteran pitcher of 19 years, Billy Chapel is given a start on the second to last day of the season. Old age and an ailing arm make the task of winning the game difficult, especially against the New York Yankees.

The events prior to the game and flashbacks during the game offer the right amount of suspense and spontaneity that take place in baseball. The game that Chapel is pitching seems directly related to his flashbacks.

Screenwriter Dana Stevens, who also wrote "City of Angels," allows the audience to see into the mind of a big league pitcher. Stevens, who adapted the film from Michael Shaara's novel by the same title, intertwines a baseball story and a love story together beautifully.

With the direction of Sam Raimi, "For Love of the Game" offers a spectacular inside look at the inner workings of professional baseball. Raimi, who also directed "The Hudsucker Proxy" and "A Simple Plan," brings his imaginative filmmaking style to the world of baseball. Raimi also offers a particularly interesting view of "the zone," which is where all athletes have been at one time in their lives.

"For Love of the Game" is produced by Arny Bernstein and Amy Robinson and is released through Universal Pictures.

"For Love of the Game" is rated PG-13 due to some adult content and runs approximately 125 minutes. It is now showing in theaters everywhere.



Major league pitcher Billy Chapel (Kevin Costner) has been the heart and soul of the Detroit Tigers for 20 years. New Yorker Jane Aubrey (Kelly Preston), is the woman who steals his heart.

Friday
NO COVER
Before 10:30
w/college I.D.

thecheetah

1224 Wash

3 Level Dance

Cheetah Lounge

Non-stop Dance Party

Oct 1st Te
Oct 8th D
Oct 15th
Oct 22nd
overame
Oct 29th Sc

Visit us @ www.c

231-9800 18 to enter

CampusC

September

THURSDAY	FRIDAY	SATURDAY	SUNDAY
Thursday, September 23 Racquetball Tournament All Day Vadalabene Center Courts Indoor Tennis Tournament All Day Court 4, Student Fitness Center Good Buy Bookshop 11:00a.m. - 3:00p.m. Room 0012, Lovejoy Library People for Proactive Change 11:30a.m. Goshen Lounge, Morris University Center IMAGE - Dress for Success 2:00p.m. - 2:50p.m. Room 3207A, Founders Hall Table Fellowship at the Religious Center, under the Dome 6:30p.m. Religious Center Spades Tournament 6:30p.m. Multi-Function Room, Woodland Hall Must See TV Thursday 7:00p.m. - 10:00p.m. Cougar Den, Morris University Center The Chenille Sisters 7:30p.m. Katherine Dunham Hall Theater \$7.00 Students/\$14.00	Friday, September 24 Family Weekend Women's Volleyball - SIUE vs. Lewis 7:30p.m. Vadalabene Center, Gymnasium The Chenille Sisters 7:30p.m. Katherine Dunham Hall Theater \$7.00 Students/\$14.00 General Admission Friday Night Follies 8:00p.m. "Bob Ellison Jazz Combo" Cougar Den, Morris University Center Alpha Phi Alpha Dance 10:00p.m. Meridian Hall, Morris University Center	Saturday, September 25 Family Weekend PrairieLand Share Volunteer Opportunity 8:00a.m. - 12:00p.m. Granite City, Illinois Hands-on Service Day 8:00a.m. leaving from the Religious Center Saturday Brunch 10:30a.m. - 1:30p.m. Morris University Center Restaurant Women's Volleyball - SIUE vs. Wisconsin-Parkside 11:00a.m. Vadalabene Center, Gymnasium Women's Soccer-SIUE vs. Quincy Pack the Stadium 12:30p.m. Korte Stadium Men's Soccer-SIUE vs. Quincy Pack the Stadium 3:00p.m. Korte Stadium Catholic Campus Ministry Sport 3:00p.m. Vadalabene Center Women's Volleyball - SIUE vs. Northern Alabama 6:00p.m. Vadalabene Center, Gymnasium Newman Student Union Social 6:00p.m. Religious Center	Sunday, September 26 Family Weekend Rock Climbing Cliffe Sunday Brunch 10:30a.m. - 1:30p.m. Morris University Center Restaurant Catholic Mass 10:30a.m. Religious Center Sports Center Ball 11:00a.m. - 1:00p.m. Cougar Den, Morris University Center Peck Christian Fellowship Pr Worship 7:00p.m. Religious Center Catholic Mass 8:30p.m. Religious Center

Look For Upcoming Events

Info



Washington ave

Extravaganza!

the Collisium

Live Bands Every Friday & Live Hip-Hop on Saturdays!

Son of Starchild
Paint the Earth
& Dr. Zhivegas!

Teri Bristol
h Dj Groove
5th Adam X
d Moonshine
merica'99
Scott Hardkiss

w.cheetah1224.com

21 to drink



Connection mber'99

SUNDAY	MONDAY	TUESDAY	WEDNESDAY
September 26 Weekend Climbing at Ferne Brunch n. - 1:30p.m. University Center ant Mass/Social n. s Center Central-College n. - 10:00p.m. Den, Morris ty Center ristian hip Praise and s Center Mass/Social s Center	Monday, September 27 Bi-State Softball Tournament Registration Due Reception Desk, Student Fitness Center Monday Night Football 7:00p.m. San Francisco at Arizona Cougar Den, Morris University Center Sexual Assault Survivors Group 6:00p.m. - 8:00p.m. Counseling Services, 650-2197	Tuesday, September 28 Whiffleball Tournament Registration Due Reception Desk, Student Fitness Center Business Hour 11:00a.m. - 12:15p.m. Room 3115, Founders Hall SLDP Modules 2:00p.m. & 6:30p.m. Mississippi/Illinois Room, Morris University Center Student Survival Group 2:30p.m. - 3:30p.m. Counseling Services, 650-2197 Peck Christian Fellowship Bible Study 7:00p.m. Religious Center Study Abroad Opportunities 7:00p.m. Multi-Function Room, Woodland Hall St. Louis Cardinals vs. San Diego 7:10p.m. Busch Stadium, St. Louis, Missouri Tuesday Night Series 8:00p.m. - 10:00p.m. Cougar Den, Morris University Center	Wednesday, September 29 Floor Hockey League \$20 Entry Fee Due Reception Desk, Student Fitness Center Good Buy Bookshop 11:00a.m. - 3:00p.m. Room 0012, Lovejoy Library IMAGE - Networking & Job Search Techniques 11:00a.m. - 11:50p.m. Room 3207A, Founders Hall Taste of Culture 12:00p.m. - 1:00p.m. Goshen Lounge, Morris University Center Student Growth Group 5:30p.m. - 7:00p.m. Counseling Services, 650-2197 Pre-Law Night 6:00p.m. - 9:00p.m. Goshen Lounge, Morris University Center St. Louis Cardinals vs. San Diego 7:10p.m. Busch Stadium, St. Louis, Missouri Prayer Under the Dome 7:00p.m. Religious Center Fireplace Flicks- "Rashomon" 9:00p.m. Opapi Lounge, Morris University Center

Call the

Information Office

at

650-5555

Star light, star bright

BY ERICA KIRSCHBAUM
LIFESTYLE STRINGER

Get ready to run!

The St. Louis Science Center and AT&T Corp. Wireless are preparing for their second annual "Run for the Stars" Saturday, Oct. 10, at the McDonnell Planetarium in Forest Park in St. Louis.

Serious runners can enter a 5-kilometer run, which will start at 8:30 a.m. For the more relaxed folks there will be a 1-mile run/walk starting at 9:15 a.m. A map outlining the course and instructions will be included with each participant's packet.

Registration fees vary: \$12 per person if entry form is received by Sept. 24; \$14 per person by Oct. 9; and \$15 per person the day of the race.

Registration forms can be picked up at the St. Louis Science Center, 5050 Oakland Ave., St. Louis. Early registrants may pick up packets between 4 and 8 p.m. Oct. 8 and between 8 a.m. and noon Oct. 9.

Participants will receive a T-shirt, race number and a pass to a Planetarium show. There will also be prizes to win for anyone attending.

The money raised from the race will help fund improvements of the McDonnell Planetarium. Construction is expected to start around January of next year. The estimated cost is \$10 million. The project will also benefit the future of the Science Center. The Planetarium will close for about a year, due to the extensive renovations being made. A

reopening is scheduled for 2001.

The McDonnell Planetarium currently offers its visitors a unique and entertaining way to learn about concepts and discoveries in space. A three-dimensional Digistar computer graphics star



projector helps make this possible. This projector can produce realistic images of stars, planets and other heavenly bodies, allowing viewers the opportunity to see space from a new and interesting perspective, according to the St. Louis Science Center Web site at <http://www.slsc.org>.

The McDonnell Planetarium, originally built in 1984, will be "a full-fledged space station," when it reopens in 2001, said Chanti Nunn, community relations coordinator for the Planetarium.

Top Ten ways to tell winter is on the way:

revealed in the "Starr Report"

10. Nearly every interstate/highway surrounding campus is under construction.
9. The Santa display is already up at the mall.
8. It was only 97 degrees yesterday.
7. Increase in car bombings from birds flying south.
6. It smells like mothballs in class.
5. Instructors start wearing socks.
4. The geese get even meaner.
3. Cougar Village finally gets air conditioners turned on.
2. Your mother demands a Christmas list by the end of the week.

and the number 1:
It's almost October,
you dumb ass!

PRELAW NIGHT

INTERESTED IN THE LEGAL PROFESSION?
LOOKING FOR A COLLEGE TO PURSUE YOUR MAJOR?
JUST LOOKING FOR SOMETHING TO DO?

COME TO PRE-LAW NIGHT!

SPEAK TO REPRESENTATIVES FROM:

UNIVERSITY OF MISSOURI-COLUMBIA
THE JOHN MARSHALL LAW SCHOOL
SOUTHERN ILLINOIS UNIVERSITY CARBONDALE
DePAUL COLLEGE OF LAW
NORTHERN ILLINOIS UNIVERSITY
CHICAGO KENT COLLEGE OF LAW
WASHINGTON UNIVERSITY
UNIVERSITY OF ILLINOIS CHAMPAIGN-URBANA
NOTRE DAME LAW SCHOOL

SEPTEMBER 29, 1999
6-9 P.M.

WITH A PANEL DISCUSSION AT 7:30 P.M.
GOSHEN LOUNGE

FREE FOOD!

SPONSORED BY THE SIUE PRE-LAW ASSOCIATION AND
STUDENT LEGAL SERVICES ADVISORY COMMITTEE

RAGTIME

from page 5

played a few numbers for the opening of the exhibit on Sept. 12.

Students are welcome to take advantage of this incredible resource by visiting the Music Listening Room in the Lovejoy Library or by making an appointment with Dickman. Students have used oral history accounts available in the archive for a vast array of class projects.

Take a walk through the exhibit before it's over. After the exhibit ends, students will still have access to the archive.

Contact Dickman at Ext. 2695 for further information and to access a part of SIUE's homegrown history.



Corey Deist/Alestle

Like country music? Like to write?
Like free stuff?
Come write for Alestle Lifestyles!



SUNDAZZLERS

The Ultimate Tanning Experience
"The Only Full Service
Tanning Salon in Edwardsville"

Welcome Back to School Special

8 TANS \$25
160 MINUTES

Limit One Per Customer • Must Present Valid ID
Must Present Coupon • Expires 9/30/99

CALL TODAY, 656-UTAN

COUPON

BACK TO SCHOOL SPECIAL

**\$25
OFF**
First Jump
Course

"Our 34th year"



Learn To Skydive

Archway Skydiving Center

City Airport - Vandalia, IL I-70 E - Exit 61

1-800-SKYDIVE

Does not apply to group or tandem rates

Expires 10-30-99

SIUE

COUPON

COUPON



checking choices

SIUE Cougar Checks & A FREE Cougar Checkbook
Cover When You Choose Checking 101

No Minimum Balance!
No Monthly Fee June, July & August!
FREE MagicCheck ATM/Debit Card...and more!

You'll also receive access to our...

- FREE 24 hour Magic Phone Banking.
- 24 NO-FEE Magic Touch ATM's... including 2 on campus!



CHOOSE THE ONE THAT'S RIGHT FOR YOU!

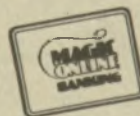
internet banking

FREE 24 Hour Magic Online...
From Any Computer With An Internet Connection

- View account information.
- Obtain specific check information.
- View a list of all account transactions.
- Transfer funds between accounts.

...and more

All you need to sign up for Magic Online is a
Checking Choices account at TheBANK.



Free Mouse Pad
When You Sign-up.

TheBANK
of Edwardsville
The People You Know & Trust

Main Office • 656-0057
Montclair Center • 656-0057
In-Store Center • Edwardsville Shop 'n Save
Alton Center/Ridge • 463-7020
Alton Center/North Port • 467-6700
Bethalto Center • 377-2884

Collinsville Center • 344-6100
Granite City Center • 877-5111
Highland Center • 654-5414
Pontoon Beach Center • 797-5111
Troy Center • 667-6702
Member FDIC



Visit our Magic Online Demo at www.4thebank.com

EDWARDSVILLE

POLICE DEPARTMENT

CAR



SHOW

Sunday, September 26 (Rain Date October 3)

Registration 8 a.m. - 12 noon...Awards 3:30

32 Classes • Entry Fee \$10 - Display Only \$5

Jr. Dragsters N/C...Choice of "Drive-thru" or "In-place" judging.

Bring lawn chairs and watch a 10-man judging team
as the MC spotlights special features of each car.

Enjoy Vintage Music...Breakfast & Lunch
served at the "Filling Station"

Location: The Bank of Edwardsville
330 West Vandalia - Hwy 157

All Proceeds Benefit Edwardsville Police
D.A.R.E. Program

Useless Facts
Hall of Fame defensive tackle Henry Jordan on his hard-nosed Green Bay Packers head coach Vince Lombardi: "When he'd say sit down, I didn't look for a chair."

SPORTS

UP NEXT

Women's Tennis. 3 p.m. Friday at Indianapolis; 9 a.m. Saturday at Indiana University-Purdue University Ft. Wayne.
Volleyball. 7:30 Friday vs. Lewis (Home); 11 a.m. Saturday vs. Wisconsin-Parkside (H); 6 p.m. vs. N. Alabama (H).
Soccer. see soccer story on top of page 10

◆ THURSDAY, SEPTEMBER 23, 1999

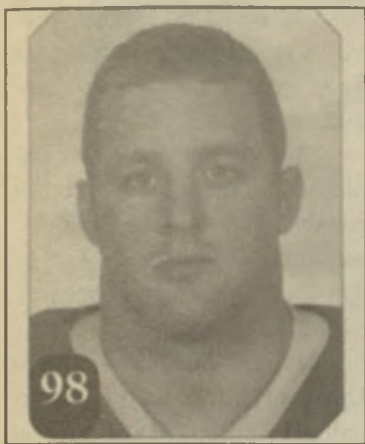
THE ALESTLE

PAGE 9 ◆

Wistrom a huge part of Rams' defense

BY GEORGE DWYER
SPORTS REPORTER

St. Louis Rams' defensive tackle Grant Wistrom was drafted back in 1998 with the first overall pick.



Bears Insider magazine photo

Many National Football League publications indicated that Wistrom had a very disappointing year for a first-round pick and would become a bust for the Rams. Luckily for Wistrom and the Rams, those publications were wrong after a great showing in the preseason and in the first game of the 1999 season against Baltimore.

Wistrom is originally from a small Missouri town about 100 miles south of Kansas City. He had to make a big decision early in life about where he wanted to play college football.

It came down to two schools: the University of Nebraska or the University of Missouri. Unfortunately for Tiger fans, Wistrom picked Nebraska and went on to win two national titles

with the Cornhuskers.

"It really wasn't a tough choice," Wistrom said. "Missouri had not had a winning program yet, and Nebraska just has a great tradition."

While playing at Nebraska, Wistrom became an All-American football player and was one of the top players at defensive tackle. Wistrom has many college football memories, two of which are winning national titles. However, there was one game at Columbia that many Mizzou football fans will never forget, and Wistrom hasn't either.

"That game out at Missouri back in 1998 was so intense," Wistrom said. "That catch that sent us into overtime and eventually winning that game

was unreal. It was that catch that really jump-started us to the national title."

The game he is referring is that heartbreaking 38-31 overtime loss Mizzou suffered in 1998. There are many Mizzou fans who still have a bad taste in their mouths from that game.

Wistrom has finally made the jump to the Rams and the style of play in the NFL. He put on a great performance back in week one against the Ravens by recording six tackles and one sack. Wistrom feels that this Rams defense is one of the best in the league.

"We take pride as a defense, and we're going to fight out of a corner," Wistrom said. "We have a great defense, and we're going to prove we are a top 10 defense."

Wistrom got used to playing in front of a lively crowd back in Lincoln, Neb. He said he sees the same thing here in St. Louis. Wistrom said he is happy to see that Rams fans get excited when the defense makes a huge play.

"(It's) so nice to have a good crowd, and you feed on that, and it makes you want to go harder," Wistrom said.

The Rams' defense seems to be in good shape with guys like Wistrom on the defensive line. This unit seems to share his attitude and enthusiasm. This kind of attitude is one that brings wins.

The Rams had week two off, and they will face the winless Atlanta Falcons at the TWA Dome Sunday.

Sports comedy sitcom will begin second year

ABC's Emmy Award-nominated "Sports Night" will make its fall season premiere Tuesday, Oct. 5

ALESTLE STAFF REPORT

Image Television and Touchstone Television's "Sports Night" will return for its second season at 8:30 p.m. Tuesday, Oct. 5, on ABC.

The comedy depicts what goes on behind the scenes during a live, nightly sports show on cable television. Last season, "Sports Night" was chosen as the No. 1 new show of the fall season by Electronic Media's television poll.

The show also received three Emmy Award nominations and the Achievement in Comedy Award from the Television Critics Association.

Executive Producer Aaron Sorkin was nominated for Outstanding Writing for a Comedy Series. Sorkin is also the creator of the series "West Wing," which premieres this season. He received the Outer Circles Award as Outstanding American Playwright for "A Few Good Men."

Executive Producer/Director Thomas Schlamme was nominated for Outstanding Directing for a Comedy Series and also received a Directors Guild Award.

Returning cast members include "Sports Night" co-anchors Josh Charles as Dan

Rydell and Peter Krause as Casey McCall.

Dan and Casey portray avid sports fans who satisfy their lifelong dreams of being involved in sports occupations.

This year, Dana Whitaker (Felicity Huffman), who stars as the show's executive producer, and Casey will develop a relationship. The recently divorced Casey must date a certain number of "eligible ladies," according to Dana, before she will agree to date him.

Dana has as much interest in sports as any male on the show's staff. Her no-nonsense attitude plays a key role as she tries to produce the best evening show possible.

Also returning for the second season is the show's managing editor, Isaac Jaffee, played by Robert Guillaume. Guillaume suffered a mild stroke during the tapings of last season's episodes.

Sorkin uses the stroke this season in Isaac's character for dramatic reasons. The recovery of his stroke is the main reason Isaac struggles to meet the demands of his personal and professional life.

Sabrina Lloyd plays senior Associate Producer Natalie Hurley. Natalie has a knack for being the only one on the set to stay calm, while others are raising their voices.



Photo from Touchstone Television press release

The "Sports Night" cast from left to right is Robert Guillaume, Felicity Huffman, Peter Krause, Joshua Malina, Sabrina Lloyd and Josh Charles. The show airs Tuesdays on ABC.

Associate Producer Jeremy Goodwin, played by Joshua Malina, rounds out the cast for the new season. Jeremy portrays a lovable, yet nerdy guy who, with Natalie's help, can outsmart any technical inconveniences that go on before the show is on the air.

Jeremy and Natalie not only work in the same field but experience romance as well. The relationship is troubled, however, when Jeremy finds his ex-girlfriend to be more important than Natalie.

Josh Charles was raised in Baltimore and is a die-hard Orioles fan. He attended the

Baltimore School of Performing Arts and currently lives in Los Angeles.

Charles made his feature debut in "Hairspray" by John Waters. Perhaps Charles' most famous role was when he starred opposite Robin Williams as Knox in Peter Weir's "Dead Poets Society."

Peter Krause was raised in Minnesota and is a Twins fan to this day. He suffered an injured back in a pole vaulting accident in high school, where he participated in track and gymnastics. The injury led him to audition for a school play, and that's when he began his acting

career.

Krause began his television career on Carol Burnette's "Carol & Company." He has made appearances in films such as "The Truman Show" and has been a guest star on hit television programs such as "Seinfeld," 3rd Rock from the Sun, "The Drew Carey Show," "Caroline in the City," "Ellen" and "Party of Five."

Huffman has guest starred on "Law & Order," "Chicago Hope" and "The X-Files." She won the 1997 Obie Award for her performance in Broadway's "Speed the Plow."

see SHOW, page 10

Hollywood ★ Tan

SIUE STUDENT SPECIAL

8 VISITS \$19.99

MUST BRING COUPON & VALID STUDENT ID. EXPIRES 9/30/99

RENT

CARS • VANS • TRUCKS

Cassens
EDWARDSVILLE/GLEN CARBON
CHRYSLER • DODGE • PLYMOUTH

Call Rental 692-7386

3333 S. HWY 159 • Glen Carbon
2 Miles North Of I-270



THE VENUE

Open From 9pm till 3am Every Day!

With No Cover before 10pm 18 to Enter 21 to Drink

COLLEGE NIGHTS

EVERY Wednesday
\$50 Drafts

EVERY Thursday
\$25 Pitchers

Friday Nights

Latin Salsa Fiesta

With \$3.00 Yards &
Shot Specials

Salsa Latin House Music

SATURDAY NIGHT DANCE PARTY

Ladies We Cater to YOU with Free Drinks from 9-1 &

The Men of Playgirl & The Untouchables

All Male Review Starting at Midnight

942 N. 1st Street Laclede's Landing For more info call 231-VENUE

Cougars move into new home

Newly renovated Bob Guelker Field ready for soccer games

BY RICK CROSSIN
ASSISTANT SPORTS EDITOR

Home, sweet home.

The SIUE men's soccer team will finally get its first chance to play at newly renovated Bob Guelker Field this weekend.

According to the administration, \$225,000 was spent on renovating the field. Some of the changes included a new irrigation system, a new visitors' locker room and a heating and air conditioning system.

"It will be nice to be home," head coach Ed Huneke said.

Huneke is happy to be playing in a newly renovated stadium, especially since the quality of some opponents' fields has been poor.

"Both fields were terrible this weekend," Huneke said.

The Cougars are 2-0 in the Great Lakes Valley Conference

after defeating Bellarmine College 4-0 and Kentucky Wesleyan College 2-0 over the weekend.

Huneke is also very pleased with the way his team played against Kentucky Wesleyan.

"They (Wesleyan) were very rough and uncontrolled," Huneke said. "Those types of antics can disrupt a team if you let it, and our players didn't let it."

The Cougars have had three shutouts in a row, thanks in large part to the play of their goalkeepers, Donny Sheehan, Bret Richardson and James Schneider. All three have one shutout apiece.

The problem for Huneke is deciding which keeper gets the most playing time.

"It's a nice problem to have," Huneke said. "Each of them (goalkeepers) has his strong points and weak points, and we're trying to get a better feel

for which one will serve us best."

The Cougars will play their third conference game of the year Saturday in their home opener against Quincy.

"Quincy is typically our biggest rival of the year," Huneke said.

Huneke said he hopes to have an energetic crowd Saturday. Huneke has put together an event called "Pack the Stadium," where there will be raffles for Nike T-shirts and a \$250 goal-scoring contest and other events.

"We have a lot of promotions planned for the students and their parents, with it being parents' weekend," Huneke said.

The Cougars play at 3 p.m. Saturday at home and 3 p.m. Sunday at Southern Indiana University. The Lady Cougars will play at Bob Guelker Field at 12:30 Saturday against Quincy.

SHOW

from page 9

Robert Guillaume was raised in St. Louis. He began his education, served in the U.S. Army, and then finished his studies as a business administration major at St. Louis University.

Guillaume is best known for his role as Benson DuBois, the irresponsible butler on the television comedy series "Soap." In 1979, he received an Emmy for Outstanding Supporting Actor in a Comedy Series for "Soap," and also won an Emmy in 1985 for Outstanding Actor in a Comedy Series for "Benson."

Guillaume starred in opera

as well. He gained great reviews for his role as star of the Los Angeles production of "The Phantom of the Opera." His role as Nathan Detroit in "Guys and Dolls" was good for a Tony nomination.

Sabrina Lloyd began her acting career at the age of 12, when she played one of the orphans in her community's production of "Annie." She spent most of her childhood in Florida, where she earned her high school education.

Lloyd has made guest appearances on NBC's "Law and Order" and starred as Wade

Welles in FOX's television series "Sliders."

Joshua Malina grew up in New York and graduated from Yale University in 1988 with a bachelor or arts degree in theater. He then moved to Manhattan and has appeared in many of Sorkin's films, including "A Few Good Men," "Malice" and "The American President."

Malina has starred as Kenny Mitchell on HBO's "The Larry Sanders Show." He also made appearances on Tom Hanks' HBO miniseries "From the Earth to the Moon" as Tim Messic, a data technician.

Thursday, September 23
Friday, September 24 (sold out)
Dunham Hall Theater at SIUE, 7:30 p.m.

(618) 650-2320
www.siue.edu/ARTS_ISSUES

With nine albums and numerous awards, this witty, topical, and outrageously funny trio conjures up memories of the Andrews and Boswell sister groups. You may remember these talented ladies from their many appearances on Garrison Keillor's *A Prairie Home Companion*, NPR's *All Things Considered*, or the group's two PBS specials.

SIUE ARTS & ISSUES
SOUTHERN ILLINOIS UNIVERSITY EDWARDSVILLE



Photos from Touchstone Television press release

(Left photo) Co-anchor Casey McCall (Krause) and his producer Dana Whitaker (Huffman) will bring their relationship to a different level. (Right photo) Co-anchor Dan Rydell (Charles, right) gets concerned about his boss Isaac Jaffee's (Guillaume) mild stroke.

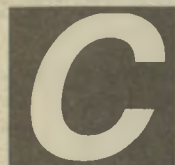
Know Your World
Read the Alestle

Affordable Auto Insurance



- SR-22
- Monthly installments
- Local Agent

Motorcycle and renter's insurance available, too.



Call Kelley Middleton or
Cole Hunter Today!
Cassens Insurance Agency
400 St. Louis Street • Edwardsville
656-6074

=WICK'S=

3043 GODFREY RD. GODFREY, IL. (618)466-2112

Monday: 25cent BUD LIGHT & 25cent
HOT WINGS
8-10pm

Tuesday: EXTRA LARGE-1
TOPPING PIZZA 5.75

Wednesday: 25cent TACOS 4-10 &
1.50 BOTTLES
-NO IMPORTS-

Thursday: 1.00 LONG ISLAND T's
& 25cent HOT WINGS
8-10pm

Football on 8ft. TV! Weekly Bands!
10¢ wings daily 2-8pm

**THIS WEEKEND
DANCE MUSIC!**

CLIP AND SAVE !!!!!

NEW ALCOHOLICS ANONYMOUS GROUP

Students: Are you interested in attending an Alcoholics Anonymous meeting? If so, there is a meeting of Alcoholics Anonymous *every Monday night from 5:00 to 6:00, beginning Sept. 27th* in the Missouri Room.

Supported by Counseling Services, Morris University Center, and the Wellness Program.

Questions? Call 650-2197.

Hey SIUE Get A Haircut*

*Or Color, or Highlights



**50% off
Regular Price**

*Regular Prices Starting at \$20.00

robert-clarkSM
design studio
692-0690

Just Around the Corner
in Ginger Creek

Call for an Appointment with our Interns
LeAnne, Lisa, Reneé

Expires 11/1/99

Floor Hockey

The Registration Deadline is Wed, Sept. 29

A \$20.00 entry fee and \$20.00 forfeit fee must accompany each team at the time of entry.

A person from each team must attend a *mandatory* manager's meeting Thurs, Sept. 30 @ 4:30 in Room 2001 of the Vadalabene Center.

Teams can consist of 8 players with 4 on the floor at a time. Games will be played Thursday evenings.

All SIUE students, faculty & staff are eligible to play.

Whiffleball World Series

The registration deadline is Tuesday, Sept. 28

There is *NO* entry fee for this double elimination tournament. The tournament runs 2 weeks on Wednesday and Thursday evenings.

A captain from each team must attend a *mandatory* manager's meeting in Room 2001 of the Vadalabene Center @ 4:30 Wed Sept. 29

Teams can register for both events at the Student Fitness Center Front Desk.

SIUE Wellness Program • Campus Recreation, Student Affairs • 650-B-FIT



CAMPUS RECREATION

Look us up on the NET at <http://www.siu.edu/CREC> • Campus Recreation, Student Affairs

CLASSIFIEDS

◆ PAGE 12

THE ALESTLE

THURSDAY, SEPTEMBER 23, 1999 ◆

HELP WANTED

Imo's Pizza Is Now Hiring for all positions Day and night shifts available Apply in person 9/28/99

Delivery Drivers Needed If you are over 18, have a reliable car and insurance, have a good driving record and need flexible hours apply in person at Imo's Pizza. 9/28/99

School age teacher needed for after school program, 2p.m. to 6p.m. 2 years college with 2 classes in education needed. Call 797-6622 10/7/99

Spring Break '00 Cancun, Mazatlan or Jamaica from \$399. Reps wanted! Sell 15 and travel free! **Lowest Prices Guaranteed!** Info: Call 1-800-446-8355. 12/9/99

ENGINEERING/CONSTRUCTION STUDENTS! Part-time positions at local precast plant for quality control, project management, and estimating. Flex hours. Start @ \$9.00 hour. Fill out application @ St. Louis Prestress Co, 16 Commercial Ct., Glen Carbon, Ill 62034 9/28/99

FOR SALE

Used Books at bargain prices. Good Buy Bookshop, Lovejoy Library Room 0012, Wednesdays and Thursdays 11am-3pm. Sponsored by Friends of Lovejoy Library. 12/02/99

Epiphone Bass Guitar \$150.00 692-9160 9/23/99

Conn Alto Saxophone \$450.00 659-9775 9/30/99

Baptist Student Ministries
656-4100
siuebsm@aol.com
http://members.aol.com/siuebsm

Lose weight with new natural, herbal weight loss system. For more information call (618) 737-2435. Get started slimming down for next summer. 9/30/99

Stop buying bottled water! New technology allows you to have clean water at home or on the road. Save hundreds of \$\$\$\$\$. Call (618) 737-2435 9/30/99

Foosball table like new \$125, 4 home stereo speakers \$100. 344-6949 after 4:30. 9/23/99

Sears Apartment Sized Washer Dryer \$125.00, Microwave \$30.00. Call 656-2428 10/5/99

'85 Ford Tempo 4-Door automatic excellent mileage \$950 o.b.o. 659-1969 10/5/99

PERSONALS

Some already have taken their trip and will land soon. Though one ship is full. Come to the Iota Phi Theta Fraternity Incorporated Informational October. 9/23/99

Men of Alpha Phi Alpha would like to invite you to the #1 jam around. Friday at 10:30p.m. until 2:30 in the Meridian Ballroom. 9/23/99

AΦ Jen Have you guessed who I am yet? Can't wait until Sunday! AΦ Love Mine Bis Sis !?!? 9/23/99 **AΣT Kendra, Laura, Tara:** We make a great family! Tau Love and mine, Amanda 9/23/99

AΣT Tara, I am so happy to have you as my daughter. I couldn't have asked for a better daughter! Love your mom, AΣT Amanda. 9/23/99

THANK YOU Ladies of AΦ for a great mixer on Friday night! As usual, we had a great time. The men of Phi Kappa Psi 9/23/99

A neophyte as like a baby shower only everyone is dressed up and nobody's pregnant. ZS Elegance Neophyte Oct. 1 Conference Room MUC 7:20p.m. ZΦB 9/23/99

Another ship will sail soon. Find out if you have enough for your ticket, but it takes more than money. Iota Phi Theta Informational October. 9/23/99

Come out and join the members of Alpha Phi Alpha for the #1 party of the year. The first 100 people cost is \$3.00 9/23/99

Promise, large promise, is the soul of an advertisement.

--Samuel Johnson

Hannegan's Restaurant

Located on Laclede's Landing Is Now Hiring Responsible, energetic, Happy people for

- Day Servers
 - Evening Servers
 - Day and Evening Hostess/Host
- Scheduling Flexibility, Great Pay. Call Mark To Set Up An Interview. 314-241-8877



Placing a classified ad

the Alestle

Frequency Rates

(For billing purposes, five (5) words equal one line)
All classifieds and personals must be paid in full prior to publication.

1 run: \$1.00/line 5 runs: \$.90/line
(2 line minimum) 20 runs: \$.8/line
3 runs: \$.95/line Personals: \$.50

Deadlines

Tuesday Publication: Noon Friday
Thursday Publication: Noon Tuesday

Office Hours: Monday thru Friday: 8am - 4:30pm 650-3528

Adjustments

Please read your ad on the first day it appears. If you cannot find your ad or discover an error in your ad, call 692-3528 or come into the office. Positively no allowance made for errors after the first insertion of advertisement. No allowance of correction will be made without a receipt.

Placing Ads

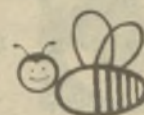
To place a classified ad, come to the Office of Student Publications, located in the UC, Rm. 2022, and fill out a classifieds form.

LaunchUSA

To Whom it May Concern:

LaunchUSA, a technologies firm based out of Edwardsville, Illinois, is seeking to recruit four interns with computer skills. It is highly desired that the individuals have strong background in networking in order to assist in the sale and installation of our proprietary school software product. Salary will range from \$6-\$8 per/hr. hours will be flexible and regular pay will be supplemented with monthly bonus based on performance. If interested please contact Johnathon Mohr at 618-288-1977.

RESUME



Busy Bee Copy Service
(618) 656-7155

311 North Main Street
Edwardsville, IL 62025

OFFSET REPRODUCTION • FOLDING

AUTO INSURANCE

- ✓ LOWEST RATES
- ✓ NO ONE REFUSED
- ✓ CREDIT CARDS OK
- ✓ FAST PHONE QUOTES
- ✓ LOW DOWN PAYMENTS

GREG SCHMIDT AGENCY
188 North Main, Edwardsville
656-9086

Health Insurance for Students

...The good stuff—major companies you know and trust!

\$15 docs' office visit copay
\$2.5 million max. benefits
5000 area docs and 30 area hospitals in network

age 18-24, monthly rate
male \$53 / female \$74

Greg Schmidt Agency
656-9086

CLUB KABOOM

SIUE's I# Dance & Drink Spot!!!

Tonight

THURSDAY

College Night

Discount w/Student ID

LAST WEEK WAS
PACKED WITH STUDENTS!!!

1¢ DRAFTS

Boxer Beer Bonging Contest

Every

FRIDAY

Z107.7

Z-Contests

& Prizes

Sal, Joe,
Boomer, Tommy

This

SATURDAY

College
Night 2

Bring Your College ID
for a Discount

\$1.50 Bottles

The Men of Playgirl
(9pm - 11pm)

Ten minutes from SIUE take 157 straight to Collinsville. Kaboom is behind the Waffle House and Amoco Station in the Travelodge. Phone: (618) 344-7171 Ext: 407