

INDEX...

editorials3
lifestyle4
sports8
classifieds12

WEATHER

Today:
Partly cloudy 33/46°

Friday:
More clouds 32/52°

Weekend:
Showers likely 36/55°

SOUTHERN ILLINOIS UNIVERSITY EDWARDSVILLE

A the Alestle

ALTON, EAST ST. LOUIS & EDWARDSVILLE

LIFESTYLE



Androgenous Anarchy

Marilyn Manson gives the straight, freaky dope to the Fox Theater, see page 8.

◆ THURSDAY, NOVEMBER 5, 1998

SOUTHERN ILLINOIS UNIVERSITY EDWARDSVILLE

Vol. 51, No. 21 ◆

SIUE first in nation to utilize Job Finder software

ALESTLE STAFF REPORT

SIUE's job referral service is going online and is the first school in the nation to use a new software program to match students and employers.

The bulletin boards outside

the employment office on the second floor of the Rendleman Building will be taken down next week when the service becomes part of SIUE's web pages.

The system took about a year to develop in cooperation with a

Texas software manufacturer, according to Marian Smithson, director of financial aid.

Academic Software Inc. provides software to universities and schools across the country. Smithson said the company supplied the program used by the

SIUE Career Development Center and is already looking to market the job referral software to other schools.

"This will create the mechanism to link the students with the employers," she said.

At any time there may be as

many as 700 jobs posted on Student Job Finder, according to Sally Mullen, assistant financial aid director. Smithson noted there were more than 1,000 jobs posted at the beginning of this school year.

see JOBS, page 2

No velvet Elvis here: Art Auction on tap

BY TRAVIS KNUCKOLLS
NEWS STRINGER

Friday is the final day to turn in entries for the 1998 Art Auction. The Art Auction is an annual event sponsored by SIUE Friends of Art and the Department of Art and Design. It is an opportunity to have your artwork sold in a professional venue and gives the work exposure in the art community.

For more than 20 years the Art Auction has been raising money for the Department of Art and Design. Last year the auction raised \$14,000 after expenses.

Entries of every kind are welcome and everyone is invited to donate their work provided that it is properly matted or mounted. Professionals and amateurs alike are eligible to donate art. Art entered into the auction by students will be judged. A prize of \$300 will go to the best of show. A prize of \$200 will go to first place and a prize of \$100 will be given to the second-place entry.



Bob Fehringer/Alestle

President of Friends of Art Jane Floyd-Hendey, right, talks with student Amber Hevermann, left, during the recent promotional brunch for the Art Auction.

According to Dianne Lynch, the office supervisor of the art department and treasurer of the Friends of Art, 275 people registered for the auction last year. However, many more went unaccounted for as it was not a requirement to register. Generally, there are between 225 and 275 pieces donated and all are sold before the night is over.

This year the auction will be at the Sunset Hills Country Club in Edwardsville. The price of admission is \$2. The event begins with a preview of the auction at 6:30 p.m. and the actual auction begins at 7 p.m. on Nov. 19. The Gary Niemeier Auction Service will provide auctioneer services. Everyone is invited to attend even if you do not plan on bidding.

Preservation Hall Jazz Band will perform Sunday as part of Arts & Issues series

BY TAMARA KANO
NEWS STRINGER

The Preservation Hall Jazz Band from New Orleans will perform Sunday, Nov. 8, at 4 p.m. in the Meridian Ballroom of the Morris University Center. The event is part of SIUE's Art & Issues Series and is co-sponsored by WSIE-FM (88.7) and The Bank of Edwardsville.

Richard Walker, coordinator of Arts & Issues, said that the Preservation Hall Jazz Band was

on campus in 1976 during the Mississippi River Festival and SIUE wanted to bring them back 23 years later.

"They are a world-class band that plays a down-to-earth jazz program," Walker said. "It's like having Mardi Gras in November."

The band has been playing the traditional New Orleans sound for more than 50 years and consists of seven members. The oldest member is 89 years old and the youngest is just

out of college.

Walker said that they are expecting around 900 people to attend the event.

"We are probably going to sell out and I don't think we will have tickets at the door," he said.

Tickets are sold out for this concert. However, Arts and Issues tickets can always be purchased at the Union Station. Students with a valid ID receive a discount. Admission includes free parking in Lot B behind the Morris University Center.

UC to get computer lab

BY QIANA RANDALL
NEWS STRINGER

Due to popular demand, a computer lab is being installed in the Morris University Center because of the convenient location.

The computer lab will be located in the old TV Room.

"Student Government is very supportive and willing to relocate," said Mary Robinson, director of the Morris University Center.

A total of 19 computers are expected to be installed in the

computer lab. Robinson intends for students to be able to access the Internet and word processing programs. Printers will be available in the lab. Robinson is not sure if there will be a fee to print. The computer lab will be open during regular University Center hours.

Part of the funding for the computer lab will come from the Academic Computing Counsel. Computers will be installed in phases.

"Dates of completion are not available at this time, but the project will be started as soon as possible," Robinson said.

Watch out for that deer

BY DAMEENA COX
NEWS STRINGER

Oh, deer! It's mating season and they're coming out to play.

Love can turn to tragedy so quickly. Fortunately, there are precautions motorists can take to reduce the chances of turning deer into mere road kill.

Deer can be seen running across the road at any time, but

the early morning hours, around dawn, is when drivers should be especially alert. Reducing speed and maintaining control of the vehicle can help avoid deer that have run onto the road.

The Illinois Department of Conservation reports that the average cost of each accident involving a deer is approximately \$3,000.

see DEER, page 2



Jill Stevens/Alestle

Julie Stappenbeck, a representative from the American Diabetes Association, explains the Team Diabetes program to students. Team Diabetes is a fund-raising marathon, set to take place in Maui, Hawaii, in March.

Police incidents

Traffic accident

On Oct. 30 at 9:17 a.m., police investigated a traffic accident in Lot 7. Brandon Kasseballm, 19, of Belleville was driving through the lot when Carrie Brueggeman, 19, of Belleville turned in front of him, striking the right rear portion of his car. No one was injured and no tickets were issued.

Warrant arrest

On Oct. 30 at 10:13 a.m., police arrested Kathleen Rainbolt, 52, of Fairview Heights on an SIUE warrant for violation of order of protection. Rainbolt posted \$500 bond and was released.

On Oct. 31 at 3:14 p.m., Kristi Holt, 21, of Glen Carbon turned herself in on an active warrant for possession of cannabis. Police also arrested Holt on a Wood River Police Department warrant for failure to appear/unlawful possession of alcohol by a minor. Holt posted \$375 bond and was released.

On Nov. 2 at 12:51 p.m., SIUE police served an active warrant for failure to appear/resisting a peace officer to Carl Machuga, 26, of Staunton. The warrant was served to Machuga at the Madison County Jail.

Theft under \$300

On Oct. 30 at 2:06 p.m., a male reported the theft of his wallet and combination lock from his locker in the Vadalabene Center. There are no suspects or witnesses.

On Nov. 1 at 10:44 p.m., a student from Cougar Village reported the theft of his wallet from his bookbag which he had left in the laundry facility at the Cougar Village Commons. Police are continuing their investigation.

Burglary to motor vehicle

On Oct. 31 at 9:16 p.m., a male reported the theft of a Dooney & Burke purse from his car. The passenger's side window had been broken out while the car was parked at Korte Stadium Oct. 29. There are no suspects or witnesses.

JOBS

from page 1

Students will be able to access the Student Job Finder through www.finaid.siu.edu or the Cougar Net or www.stuemp.siu.edu. As with the Cougar Net, a student's Social Security number is needed to log in and the birth date is the password, Smithson said.

Employers, both on and off campus, will also be able to tie in to Student Job Finder. The program will allow them to open, close or update job listings. Employers will also be able to search for

qualified candidates.

Smithson noted that each SIUE department and outside employers will have just one person responsible for Student Job Finder computer entries, but added that the program allows different people to be listed as hiring contacts.

Student Job Finder training for SIUE employers will be from 10 a.m. to 2 p.m. today in the Illinois Room of the University Center.

For more information, call Student Financial Aid at 650-2563 or e-mail nsmalli@siue.edu.



Bob Fehringer/Alestle

SIUE Facilities Management worker Johnny Pritchard uses a leaf vacuum to clean up the quad area on Wednesday morning.

DEER

from page 1

"The high risk areas are any wooded areas," said Sheryl Huber, records clerk for the campus police.

Last year there were 14 accidents reported. There have been six accidents reported already this year, according to Huber.

Campus police advise motorists to be on the alert for deer, obey posted speed limits and always wear seat belts.

SIUE ARMY ROTC 5K RUN/WALK

Saturday, November 14, 1998

Sign-in begins at 8:00 am

**The pavilion on collinsville Street and Main Street
in Glen Carbon, near the American Legion**

\$15.00 per entrant

Free Long Sleeved T-Shirt

F O R t h e E D U C A T I O N a n d R E S E A R C H C O M M U N I T Y

AAA

—S&P and Moody's
rating for TIAA*



—Morningstar rating for
the CREF Stock Account,
CREF Global Equities Account,
CREF Equity Index Account,
and CREF Growth Account**

**"...America's
Top Pension Fund."**

—Money Magazine, January 1998

*Your service
bowled me over!*

—William Raydin, TIAA-CREF Participant

HIGH MARKS FROM MORNINGSTAR, S&P, MOODY'S, MONEY MAGAZINE AND BILL.

We take a lot of pride in gaining high marks from the major rating services. But the fact is, we're equally proud of the ratings we get every day from our participants. Because at TIAA-CREF, ensuring the financial futures of the education and research community is something that goes beyond stars and numbers.

We became the world's largest retirement organization by offering people a wide range of sound investments, a commitment to superior

service, and operating expenses that are among the lowest in the insurance and mutual fund industries.¹

With TIAA-CREF, you'll get the right choices—and the dedication—to help you achieve a lifetime of financial goals. The leading experts agree. So does Bill.

Find out how TIAA-CREF can help you build a comfortable, financially secure tomorrow. Visit our Web site at www.tiaa-cref.org or call us at 1 888 219-8310.



**Ensuring the future
for those who shape it.™**

*These top ratings are based on TIAA's exceptional financial strength, claims-paying ability and overall operating performance. **Source: Morningstar, Inc., January 31, 1998. Morningstar is an independent service that rates mutual funds and variable annuities. The top 10% of funds in an investment category receive five stars and the next 22.5% receive four stars. Morningstar proprietary ratings reflect historical risk-adjusted performance and are subject to change every month. They are calculated from the account's three-, five-, and ten-year average annual returns in excess of 90-day Treasury bill returns with appropriate fee adjustments, and a risk factor that reflects performance below 90-day T-bill returns. The overall star ratings referred to above are Morningstar's published ratings, which are weighted averages of its three-, five-, and ten-year ratings for periods ending January 31, 1998. The separate (unpublished) ratings for each of the periods are:

Period	CREF Stock Account Star Rating/ Number of Domestic Equity Accounts Rated	CREF Global Equities Account Star Rating/ Number of International Equity Accounts Rated	CREF Equity Index Account Star Rating/ Number of Domestic Equity Accounts Rated	CREF Growth Account Star Rating/ Number of Domestic Equity Accounts Rated	CREF Bond Market Account Star Rating/ Number of Fixed Income Accounts Rated	CREF Social Choice Account Star Rating/ Number of Domestic Equity Accounts Rated
3-Year	4/1,856	4/391	5/1,856	5/1,856	4/675	4/1,856
5-Year	4/1,218	5/207	N/A	N/A	4/443	4/1,218
10-Year	5/612	N/A	N/A	N/A	N/A	N/A

¹Based on assets under management. ¹¹Standard & Poor's Insurance Rating Analysis, 1997; Lipper Analytical Services, Inc., Lipper-Director's Analytical Data, 1997 (Quarterly). CREF certificates and interests in the TIAA Real Estate Account are distributed by TIAA-CREF Individual and Institutional Services. For more complete information, including charges and expenses, call 1 800 842-2733, extension 5509, for the CREF and TIAA Real Estate Account prospectuses. Read them carefully before you invest or send money.

Guest column

Fight for your right to be visible

I am invisible. That is, I am never where I am, where everybody else is, because nobody ever sees me there. Perhaps you are invisible also. Did you ever get to erase the blackboard in grade school? Were you never picked in grade school? Were you never picked for a choose-up-sides game at recess? Were you left standing there with your socks creeping under your heels?

When the football stars surfed for a date to the prom, did their eyes (pass over) you as you fumbled at your locker with your sweater misbuttoned? ...

If you answered yes to the above questions, stern measures must be taken. And if you still have doubts, pause to wonder

why bank tellers slam their window closed when your turn comes, or store clerks take their breaks when you approach their register.

Your first defense is to move out of that last desk in the back row during classes. Do this gradually to avoid trauma.

Your second ploy is to talk. Don't be hesitant. Talk to everybody. It doesn't matter what you say because nobody is listening anyway and it gives you valuable experience.

Stop seething when the female driver in her small, purple car sends you leaping for the curb at the crosswalk. Wait for a crowd. She won't hit all of you. Also, carry a striped golf umbrella. It makes a statement.

Remember that the Internal Revenue Service can find you and telemarketers know your telephone number.

I have organized a movement, and our cause is gaining momentum. We have signs and placards. We intend to march in protest. The problem is that no one will see us as we charge down Main Street and we may get run over by a city bus.

At any rate, in my next life I hope to come back as a 1,000-pound black bear. It should get their attention.

E.J. Gallo
SIUE student

Letter to the Editor

Tired of negative letters

I for one am so tired of reading this newspaper's editorial column. I mean, what's the point when the only editorials being written are negative reviews of the newspaper itself? So many people complain that all Danielle's editorials are about the black experience. She's a black woman. You want she should write about the struggles of gay Polish taxi drivers?

You want to read about problems in the white

experience? Why doesn't a white person write about it? Certainly some of them must have opinions, and yet the only editorials this paper gets are related to how the editor's editorials aren't all PC and racially neutral enough.

Not every editorial can be Pulitzer Prize-winning material. Not every writer can write from the point of view of any person and have it be heartfelt and authentic. Danielle does a great job for what she's doing. Now

let's see some of you readers do better.

That is, besides the prude who wrote in because he had a problem with a naked depiction of Jesus hanging in the Opapi Lounge. However, Western society's deathly fear of the naked form and human sexuality is another editorial that's dying to be written.

Luke C. J. Smith
Alestle copy editor

Leaving activism to the Beaver



Danielle Belton

SIUE is the June and Ward Cleaver School of Activism.

Nothing seems to start a fire under people around here. Maybe this is Utopia. Maybe no one cares. Either way, activism seems dormant on this campus.

We live in an age where almost everyone is mad about something. Everyone has something that will push a hot button. It may be human rights or democracy. Maybe the word "censorship" sends chills up the spine. Certainly abortion has sparked a few heated debates. But here we seem to have noncommittal complacency.

Can't do anything about it. Why try?

No one wants fanaticism, but why should we settle for apathy and cynicism? Many students are angry about parking tickets. They rant and rave and fume, but do they ever do anything? Whether it's a perceived injustice or just a slight, students here merely react with cynical detachment. After rattling off a string of expletives, they shrug their shoulders in apathy and walk away.

Student workers complain that they are often treated as if they don't have 15 hours of classes to worry about. People are hired and fired constantly. But do students care about their fellow student workers? Most of the time, it's other students who are giving the workers a hard time. Who cares if a few people feel like they aren't being treated justly? Those people aren't you. That's their problem. That is, until you become a student worker.

We have political and social organizations that are practically silent when it comes to real issues on campus. Civil rights all over the world are being threaten, and we're just sort of flowing in and out with the tide. While we're sitting around waning and waxing with the moon, millions of others are finding causes to believe in and dreams to stand up for.

What would it take to get students angry on this campus? Perhaps the university could install pay toilets. Would the strain on our pocketbooks and, perhaps, our bowels cause us to get mad enough to protest?

Since I've been here, the biggest stink I've ever seen on campus was over the late-night dance policy last semester. Dance organizers were highly upset with the idea that students could only bring one guest. That would mean less revenue for Greek organizations that participated in these late-night dances. Greek leaders lobbied the Alestle for coverage; they screamed to everyone they knew. But what about larger, more substantive issues? What about a bad professor who has tenure yet fails to help students learn? What about graduate assistants who are not qualified to teach classes? What about poor lab facilities or a lack of equipment? What about concern for other people and injustices elsewhere? If people here can be upset about party time, shouldn't they get upset about larger issues?

And if you can't hate something enough to do something about it, can you love something enough to get others to care? Maybe some student organizations want to get together and put on an affair that would promote understanding, love and unity on our campus — a festival that would transcend race, gender, age, culture and Greek affiliation. Can students here care enough about the bike paths to make sure they get repaved on the 400 side of Cougar Village? Can we care enough about diversity to ensure that everyone, not just the international students, will celebrate International Week. Maybe we could form politically and culturally conscious organizations that could promote free thinking and enlightenment and then, maybe then, find something to love enough to get passionate about.

Either way, let's start showing some emotion. A little passion might give our campus a personality that's a more colorful and a little less '50s-TV black-and-white.

Danielle Belton
Editor In Chief

BIG LOTS

The Closeout Store

Pillsbury Toaster Scramblers
Cheese, Egg, & Bacon
\$1.19

Pocket Biscuits
sausage & gravy
39¢ each

Pepperoni Fill-A-Busters
28 pieces
\$4.99

Mama Rosa's Supreme Stuffed Crust Pizza
\$1.89

OPEN MON. - SAT. 9 AM - 9 PM
SUN 10 AM - 7 PM



Letters to the editor policy:

The editors, staff and publishers of the Alestle believe in the free exchange of ideas, concerns and opinions and will publish as many letters to the editor as possible. All letters should be typed and double-spaced and be no longer than 500 words. Please include your phone number, signature and social security number.

We reserve the right to edit letters for grammar and content. However, great care will be taken to ensure that the message of the letter is not lost or altered.

Letters to the editor will not be printed anonymously except under extreme circumstances.

The Alestle is a member of the Illinois College Press Association.

The name Alestle is an acronym derived from the names of the three campus locations of SIUE: Alton, East St. Louis and Edwardsville.

The Alestle is published on Tuesdays and Thursdays during fall and spring semesters, and on Wednesdays during summer semesters. For more information, call (618) 650-3528.

News Editor vacant
News Stringers Antoinette Bernich
..... Barbara Dumoulin
..... Lisa Gulick
..... Paul Holloway
..... Dana Miles
..... Alicia Middendorf
..... Anthony Watt
Lifestyle Editor Sheri McWhirter
Lifestyle Stringers Jim Dalton
..... Travis Knuckolls
..... Sasha Mastroianni
..... Stephen White
..... Kara Wolf
Cartoonists Cynthia Kruchten

..... Jim Shipley
Sports Editor Todd Spann
Sports Reporters Tony Ammann
..... Jamie Hopper
..... Christopher Lamb
..... Brett Licata
..... Jerrold Sharp
Writer At Large Corey Stulce
Chief Copy Editor Rhoda T. Harpe
Copy Editor Barbara Dumoulin
..... Andrew Harmon
..... Sasha Mastroianni
..... Luke C. J. Smith
Webmaster Richard Binnington
..... James Lentz

Circulation Troy Dinkheller
..... Patrick Durst

Graphics Assistants DJ Koinicki
..... Mark Wood

Ad Reps Eric Albrecht
..... Quinn Morrow

Student Secretaries Katie Clanton
..... Stacie Evans
Photo Editor Bob Fehringer
Assistant Photo Editor Jill Stevens
Photographer Jeremy Indelicato
Editor in Chief Danielle Belton

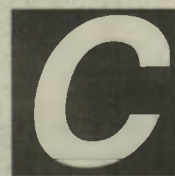
The Alestle
Campus Box 1167
Edwardsville, Ill. 62026-1167
<http://www.siu.edu/ALESTLE/Alestle.html>

Affordable Auto Insurance



- SR-22
- Monthly installments
- Local Agent

Motorcycle and renter's insurance available, too.



See Kelley Middleton or
Cole Hunter Today!
Cassens Insurance Agency
400 St. Louis Street • Edwardsville
656-6074

Lifestyle

People, Entertainment & Comics

◆ PAGE 4

The A l e s t l e

THURSDAY, NOVEMBER 5, 1998 ◆

MARILYN MANSON SHOCKS THE CROWD AT THE FOX

BY JANE PRIDGEN
LIFESTYLE STRINGER

Thousands of concertgoers fastened their safety belts and geared up for the roller coaster of their lives. On the evening of Tuesday, October 27, Marilyn Manson made his second appearance at the Fox Theatre in St. Louis.

A sea of bodies dressed mostly in black and handfuls of painted goth faces filled the seats of the prestigious concert hall as the anticipation grew unbearable. Outside, religious groups demonstrated by carrying signs boycotting Marilyn Manson's scheduled performance.

Shortly after 7:30 p.m., 12 Rounds, a British goth group newly signed to nothing Records, entered the stage to play a nine-song, 50-minute set. Fronted by Claudia Sarne, whose voice has been described as a cross between Cruella De Vil and Eartha Kitt, this gothic group slithered their way onto the crowd. A dark mood lingered which appeared to be too gloomy or too boring for most of the charged Marilyn Manson fans. The music was as mysterious as the vocals. One devoted Manson fan stated, "They need more metal. It's too calm in here. Other than that, I love her tights." At times, the sign language interpreter received more attention.

During the set change, Pink Floyd's "The Wall" played overhead. After what seemed like an eternity to some and only 20 minutes to others, the overhead lights began to dim. The blue lights behind the silk screen covering the stage revealed the silhouette of one of the most controversial groups in the world.

With peaking excitement, the crowd stood up, its energy flying through the roof. Thunderous rhythms radiated into the souls of these eager fans. The sound

crew removed the screen, exposing the four members producing the background music. Multicolored speakers, blocks and TV screens covered the stage and added life and glamor to the set.

Smoke filled the area as Manson appeared before everyone's eyes in his sky blue bodysuit complete with



a cape and thong to patch up those exposed areas. His hairspray-stiff, red-streaked black hair warped everyone back to the '80s.

Oh, and what would the band be without their makeup? Omega and his Mechanical Animals were dolled up with their finest faces. Manson's cape fell to the floor and everything was in full effect. Let the

controversy begin.

"The Reflecting God," first of the 16-song set, surprised many as an opener to the Mechanical Animals tour, especially since the song is from their previous album, "Antichrist Superstar." Lights and stage effects complemented the next few songs, including selections from another previous album and the newest one.

The bright lights and costumes revealed a more glam-rock Hollywood style, more Marilyn than Manson. Costume changes occurred as often as the number of times Manson spat into the crowd, which is to say very often.

Armored up in his red platforms and sequined one-sleeve bodysuit (with another matching thong), he sang "Rock is Dead" and left many seeing red sparkles and feathers.

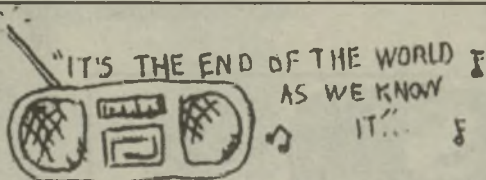
Halfway into the set, two gospel singers entered the stage to sing backup vocals. This surprising new twist left many Manson fans shocked and confused. "I think it's cool that they're changing and all, but I'm not quite sure everyone's going to like it," Sarah Park, a Manson fan since early 1994, commented. "Although I think only Manson could pull it off."

Others seemed indifferent to the change with comments like "Hey, it's still Manson," and "I love them either way. Change is good. It keeps us on our toes."

The drug addict anthem "I Don't Like the Drugs, but the Drugs Like Me" was accompanied by a Vegas-style sign that read "Drugs" which lit up very brightly whenever the word "drugs" was spoken, adding a dose of humor.

see MANSON, page 5

STICKMAN

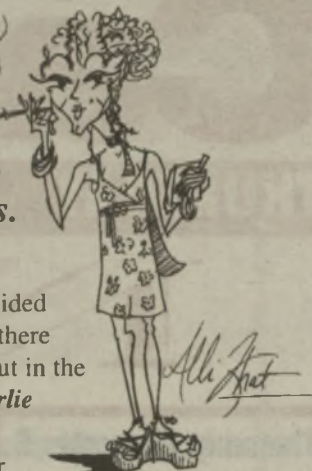


BY: Cynthia Krueh



Ask Alli Khat

Alli Khat is not a licensed therapist and her advice should only be taken seriously if you are very desperate, or make numerous phone calls to psychic hot lines.



Dear Alli Khat,

Last weekend, my friends and I were really bored. We all decided to go to the computer lab for lack of something better to do. We were there chatting for about two hours. Now all my friends want to do is hang out in the computer lab and chat. I'm starting to get lonely. — *Non-chatter Charlie*

Dear Non-chatter Charlie,

It's a shame that your friends have chosen the computers over you. It's amazing to me how computers have gone from being a device used to type term papers to an opponent in chess and card games, a best friend and, sad to say, a sexual partner for some. What is this world coming to? Soon people won't even have to leave their homes because the computers will be sufficient for every human need.

Dear Alli Khat,

This guy has been bugging me to do something with him for about three months now. I have always told him no because I am not interested in him or the activity he wants to drag me to. Well it just so happens that there is this really cool ska band playing in two weeks, and I really want to go. If he asks me, should I say yes, and how can I make him understand that I don't want a relationship with him? — *Need Advice Angie*

Dear Need Advice Angie,

I'm gathering from your letter that you are basically going to use this guy to take you to the ska show, get his hopes up and then watch his ego crash to the ground when you won't go out with him again. Cool!

Guys are usually the ones who are being jerks, and this is your opportunity to get back at the male species for all the times they have said they would call but they didn't, led you to believe they loved you but really only wanted sex and so on.

You could really have fun with this one. Wear a short skirt and a tight top (low-cut, of course) and flirt with him all night. Then when it's time to go home, go home with another guy.

MANSON, from page 4

The really controversial stuff began in the second half of the show. To start off, Manson taunted the security guards, one in particular, during "User Friendly," a song about how one uses another for their own gratification without being in love.

Soon after that, Manson paused to ask why there were sign language interpreters at his concert. "Are there any deaf people here? I didn't think you could f***ing hear me." He then incited the audience to spit on the interpreters.

In another inevitable instance midway through the song "Antichrist Superstar," Manson, dressed in a black suit and red shirt, ripped up a Bible and tossed the torn pages into the audience.

During "Irresponsible Hate Anthem," Manson provoked fans to raise their hands in rage and display only their middle fingers — something everyone was taught not to do during their adolescent years.

Manson played "Rock 'n' Roll Nigger," a remake of the Patti Smith song. His cover of it, forever being mistakenly perceived as racist, was banned during the group's Dead to the World tour.

Manson jumped aboard his infamous stilts for one song, then continued to sing crowdpleasers from the last tour for the encore.

In all, the unleashing of anger was well worth \$25 and hours in ticket lines.

"Vampires" makes a killing over Halloween

NEW YORK (AP) — When Hollywood trots out vampires, the results are visually enjoyable but usually predictable: oral fixations, elaborate graveyard scenes, nubile women dancing the line between allure and decay. Only occasionally do cinematic chronicles of the undead rise above.

"John Carpenter's Vampires," an exceptionally bloody entry in the canon of Nosferatu, does. It's not just mediocre schlock. It's well-executed, engrossing, innovative ... schlock.

Carpenter, of course, knows how to do horror. From the original "Halloween" to his unsettling remake of "The Thing," he can push viewers' buttons like no other. But with "Vampires," he goes another dimension further. Visually, it's just stunning. In New Mexico, where the skies seem a deeper blue and the earth a bloodier red, vampire slayer Jim Crow (James Woods) leads a high-tech team scouring the parched Southwest looking for nests of the undead. Crow is a callous, often cruel man with a troubled, tragic childhood who does the Roman Catholic Church's dirty work of eliminating the unholy.

Blood, to be sure, is a staple of vampire movies. Carpenter applies it to excess, but he uses a few early scenes to establish the almost-cartoonish quality of his violence. So by the time a priest is decapitated and a group of monks are set upon by a pack of vampires, the gore, for better or worse, has been folded into the story.

Carpenter has always done well with that balancing act and here he has clearly perfected it; this is one of his most violent films to date, yet the violence doesn't overshadow the story.

What makes "Vampires" special is its look, rendered lovingly by production designer Thomas A. Walsh and cinematographer Gary B. Kibbe. They use southwestern Spanish architecture to evoke gothic and Old West flavors, subtly linking the New Mexico landscape to the Old World stomping ground of cinema's traditional vampires. Adept uses of light, shadow and sunset round out the appearance for a sensory treat.

"John Carpenter's Vampires" is produced by Sandy King from a Don Jakoby screenplay.

Say What!?

by Jill Stevens

Nostradamus predicted a world revolution in 1999 and the rise of a new world leader for the next millenium. Who will it be?



"Ross Perot."
-Eduardo Poeliniz,
Junior, pre-med



"Bill Clinton."
-Katie Baker,
Freshman, Elementary
Education



"God."
-Radiance Pitts,
Junior, Art Education



"I don't think Nostradamus was right."
-Patty Herman,
Grad Student, Biology



"John Glenn."
-Christy Jones,
Sophomore,
Elementary Education

MODULES

11/10/98

2:00 p.m.

"20" Analyzing Public Perception*Mark Von Nida, County Clerk*

Madison County

Cahokia Room, MUC

6:30 p.m.

"10" Values & Ethics*Ed. Wojcicki, Editor*

Illinois Issues

Cahokia Room, MUC

11/17/98

2:00 p.m.

"21" Leadership Challenges for Men & Women*Mary Hizer, Executive Director*

YWCA

Mississippi/Illinois, MUC

6:30 p.m.

"23" Leadership Challenges for Minorities*Doris Jones, Regional Vice President*

Urban League of Metro St. Louis

Mississippi/Illinois, MUC

***** SLDP Reminders *****

Volunteer Projects

November 7 & 14 - Habitat for Humanity, Alton, IL

November 21-24 - Thanksgiving Break, Urban Plunge, St. Louis, MO

November 21 & December 19 - Prairie Share Food Co-op, Granite City, IL

For more information contact the Kimmel Leadership Center at extension 2686

CampusCo

THURSDAY

FRIDAY

SATURDAY

SUNDAY

November

Thursday, November 5**"Riverdance"**

through November 15

Fox Theatre

St. Louis, Missouri

Mississippi River Festival

10:30a.m. - 1:00p.m.

Morris University Center

Center Court

Soup and Substance

12:00p.m. - 1:00p.m.

Morris University Center,

Cahokia Room

Just Work It: Circuit Aerobics

12:00p.m. - 12:30p.m.

Vadalabene Center

Dance Studio

Stretch Class,

4:00p.m. - 4:30p.m.

Student Fitness Center

Aerobics Room

Aerobics/Aerobic Funk

Level 2-3, 4:45p.m.

Student Fitness Center

Aerobics Room

World Wrestling Federation

5:30p.m., Kiel Center

St. Louis, Missouri

Aerobics - Level 1-3

6:00p.m.

Student Fitness Center

Aerobics Room

Pterodactyls Performance,

7:30p.m., Metcalf Student

Experimental Theater

\$3.00 General Admission

Friday, November 6**Fourth installment payment due for Fall '98****Bolero!**

10:30a.m.

Powell Symphony Hall

St. Louis, Missouri

Just Work It: Circuit Aerobics

12:00p.m. - 12:30p.m.

Vadalabene Center

Dance Studio

Student Senate Meeting

2:30p.m. - 4:30p.m.

Morris University Center

International Room

Aerobics - Level 2

4:45p.m., Student Fitness Center

Aerobics Room

Badminton

3:00p.m., Student Fitness Center

Gymnasium

Discover SCUBA

1:30p.m. - 4:00p.m.

Vadalabene Center, Pool

Pterodactyls Performance

7:30p.m., Metcalf Studen

Experimental Theater

\$3.00 General Admission

Volleyball - SIUE vs. Quincy

7:30p.m., Vadalabene Center

Gymnasium

Saturday, November 7**Habitat for Humanity**

8:00a.m. - 1:00p.m.

Alton, Illinois

Aerobic Interval & Circuit

Stations

12:30p.m.

Student Fitness Center

Aerobics Room

Volleyball

SIUE vs. Missouri-St. Louis,

2:00p.m., Vadalabene Center,

Gymnasium

Pterodactyls Performance

7:30p.m.

Metcalf Student

Experimental Theater

\$3.00 General Admission

Bolero!

8:00p.m.

Powell Symphony Hall

St. Louis, Missouri

Sunday, November 8**Catholic Mass/Social**

10:30a.m.

Religious Center

Sunday Brunch

10:30a.m. - 1:30p.m.

Morris University Center,

University Club Restaurant

Body Sculpting Aerobics

12:30p.m.

Student Fitness Center

AerobicsRoom

Pterodactyls Performance

2:00p.m.

Metcalf Student

Experimental Theater

\$3.00 General Admission

Bolero!

3:00p.m.

Powell Symphony Hall

St. Louis, Missouri

Preservation Hall Jazz B

4:00p.m.

Morris University Center,

Meridian Hall, \$7.00 Stud

\$14 General Admission

Vocal Jazz Ensemble

5:00p.m.

Katherine Dunham Hall

Room 1109

Praise and Worship Serv

5:30p.m.

Religious Center, Peck Ch

Fellowship

Catholic Mass/Social

8:00p.m., Religious Cent

For information call the
Information Office at
692-5555

KERASOTES THEATRES

visit our website at www.kerasotes.comSHOWTIMES
START FRIDAY!

COTTONWOOD CINEMA 656-6390

Upper Level of Cottonwood Mall

Next to Walmart • Edwardsville

\$2.00 All Seats / All Shows**One True Thing (R)**

Fri/Sat 7:15, 9:50; Sun-Thurs 7:15;

Sat/Sun Matinee 2:15

Saving Private Ryan (R)

Fri/Sat 7:00; Sun-Thurs 7:00;

Sat/Sun Matinee 2:00

A Night At The Roxbury (PG-13)

Fri/Sat 7:30, 9:30; Sun-Thurs 7:30;

Sat/Sun Matinee 2:30

SHOWPLACE 12 659-SHOW

Edwardsville

Just W. of Rt. 159 on Center Grove Rd.

ALL STADIUM SEATING • ALL DIGITAL SOUND**\$3.50 • All Shows Before 6 pm**

• Students • Seniors

Vampires (R)

Daily 4:50, 7:15, 9:45;

Sat/Sun/Wed Matinee 1:50

The Waterboy (PG-13)

Daily 4:45, 6:50, 9:00;

Sat/Sun/Wed Matinee 12:30, 2:30

The Waterboy (PG-13)

Daily 5:30, 7:45, 10:00;

Sat/Sun/Wed Matinee 1:00, 3:00

Pleasantville (PG-13)

Daily 4:15, 7:15, 10:05;

Sat/Sun/Wed Matinee 1:10

Practical Magic (PG-13)

Daily 4:00, 6:45, 9:20;

Sat/Sun/Wed Matinee 1:30

What Dreams May Come (PG-13)

Daily 3:50, 7:10, 9:30;

Sat/Sun/Wed Matinee 1:10

Antz (PG)

Daily 4:30, 6:30, 8:50;

Sat/Sun/Wed Matinee 2:30

Urban Legend (R)

Daily 5:00, 7:40, 9:50;

Sat/Sun/Wed Matinee 2:15

Rush Hour (PG-13)

Daily 5:20, 7:50, 10:10;

Sat/Sun/wed Matinee 2:20

Beloved (R)

Daily 4:30, 8:00

Sat/Sun/Wed Matinee 12:50

The Siege (R)

Daily 4:20, 7:00, 9:40

Sat/Sun/Wed Matinee 1:40

The Wizard of Oz (G)

Daily 4:20, 6:40, 9:10

Sat/Sun/Wed Matinee 2:00

CINE' 254-6746

400 Central Ave., Roxana

\$2.00 All Seats / All Shows**ANTZ (PG)**

Fri/Sat 6:45, 8:45; Sun-Thurs 6:45

Sat/Sun/Wed Matinee 2:00

NAMEOKI CINEMA 877-6630

Nameoki Village, Granite City

\$2.00 All Seats / All Shows**Bride Of Chucky (R)**

Fri/Sat 7:00, 9:15; Sun-Thurs 7:00

Sat/Sun Matinee 2:15

Rush Hour (PG-13)

Fri/Sat 6:45, 9:00; Sun-Thurs 6:45;

Sat/Sun Matinee 2:00

QUAD CINEMA 4 233-1220

5700 N. Belt West, Belleville

\$3.50 All Shows Before 6 pm**Vampires (R)**

Daily 4:30, 7:10, 9:40;

Sat/Sun/Wed Matinee 2:00

The Waterboy (PG-13)

Daily 4:45, 7:20, 9:50;

Sat/Sun Matinee 2:15

The Siege (R)

Daily 4:10, 7:00, 9:30;

Sat/Sun/Wed Matinee 1:40

Practical Magic (PG-13)

Daily 4:15, 6:45, 9:20;

Sat/Sun/Wed Matinee 1:50

EASTGATE 6 254-5289

Eastgate Center, East Alton

\$4.00 All Shows Before 6 pm**Vampires (R)**

Fri/Sat 4:30, 7:00, 9:20 Sun-Thurs

4:30, 7:00; Sat/Sun/Wed Matinee 2:10

Pleasantville (PG-13)

Fri/Sat 4:30, 7:10, 9:50 Sun-Thurs

4:30, 7:10 Sat/Sun/Wed Matinee 1:50

The Waterboy (PG-13)

Fri/Sat 5:00, 7:30, 9:40; Sun-Thurs

5:00, 7:30; Sat/Sun/Wed Matinee 2:30

The Siege (R)

Fri/Sat 4:40, 7:20, 10:00 Sun-Thurs

4:40, 7:20 Sat/Sun/Wed Matinee 1:30

Practical Magic (PG-13)

Fri/Sat 4:10, 6:50, 9:30 Sun-Thurs

4:10, 6:50 Sat/Sun/Wed Matinee 1:40

The Wizard of Oz (G)

Fri/Sat 4:20, 6:40, 9:00 Sun-Thurs

4:20, 6:40, Sat/Sun/Wed Matinee 2:00

FREE REFILL on All Sizes of Popcorn and Soft Drinks!

THE SCENE

Happenings Around SIUE

CONCERTS

St. Louis Symphony Orchestra

The **St. Louis Symphony Orchestra** performs regularly at **Powell Symphony Hall**. Tickets \$15 - \$66. **Leonard Slatkin** conducts **Mahler's Symphony No. 7** at 8 p.m. Nov. 19 - 21. **Powell** is at 718 N. Grand. 314-286-4136.

Mississippi Nights

Kling's X and the **Galactic Cowboys** perform Friday. **Semisonic** performs Saturday. **Mississippi Nights** is at 914 N. 1st. 314-421-3853.

THEATER

St. Marcus Theatre

Songs for a New World, a new off-Broadway rock musical, begins its national tour with St. Louis performances through November 14. The **St. Marcus Theatre** is at 2102 Russell.

Metcalf Theatre

The **Student Experimental Theatre Organization** presents **"Pterodactyls."** Performances are at 7:30 p.m. through Saturday and 2 p.m. Sunday at SIUE's **Metcalf Theatre**. Tickets \$3.

St. Louis Black Repertory Co.

The **St. Louis Black Repertory Company** presents **Five Guys Named Moe** through Nov. 15 at the **Mildred E. Bastian Performing Arts Center** at **St. Louis Community College - Forest Park**. Tickets

ARTS & ISSUES

Preservation Hall Jazz Band

The **Arts and Issues** series continues when the **Preservation Hall Jazz Band** performs traditional pre-Dixieland New Orleans jazz at 4 p.m. Sunday in **Morris University Center's Meridian Hall** on **SIUE** campus. 650-2626.

SPECIAL EVENTS

Saturday Studio

SIUE's **Department of Art and Design** continues its **Saturday Studio** program

Connection

DAY MONDAY TUESDAY WEDNESDAY

November 1998

November 8

Monday, November 9

Tuesday, November 10

Wednesday, November 11

International Week

Chancellor's Colloquium
12:00p.m. - 1:30p.m.
Morris University Center
Mississippi/Illinois Room

Just Work It: Circuit Aerobics
12:00p.m. - 12:30p.m.
Vadalabene Center
Dance Studio

Power Step - Intermediate/Advanced Aerobics
4:45p.m.
Student Fitness Center
Aerobics Room

Sexual Abuse/Sexual Assault Survivors Support Group
6:00p.m. - 8:00p.m.
Counseling Services

Aerobics - Level 1-2
6:00p.m.
Student Fitness Center
Aerobics Room

Catholic Campus Ministry Inquiry Session
7:00p.m.
Religious Center

Jazz Combo Concert,
7:30p.m.
Katherine Dunham Hall
Room 114

International Week

International Fest
10:00a.m. - 2:00p.m.
Morris University Center
Goshen Lounge

IMAGE - Interviewing Part II
1:00a.m. - 12:15p.m.
Founders Hall, Room 2407

Just Work It: Circuit Aerobics,
2:00p.m. - 12:30p.m.
Vadalabene Center, Dance Studio

Student Leadership Development Program Modules
2:00p.m. & 6:30p.m.
Morris University Center

Student Survival Skills Group
2:30p.m. - 3:30p.m.
Peck Hall, Room 2415

Stretch Class
4:00p.m. - 4:30p.m.
Student Fitness Center
Aerobics Room

Aerobic Kick/Boot Camp
4:45p.m., Student Fitness Center
Aerobics Room

Aerobics Level 1-3
6:00p.m.
Student Fitness Center
Aerobics Room

Camping/Backpacking 101
6:00p.m. - 7:30p.m.
Vadalabene Center Room 2001

Evening Student Dialogue with the Chancellor
7:00p.m. - 8:00p.m.
Peck Hall, Second Floor break area

Bible Study
7:00p.m.
Religious Center
Peck Christian Fellowship

Guest Lecturer, Judge Mitch Crane
8:00p.m., Mississippi Illinois room,
Morris University Center
Free Admission

Veterans Day

International Week

International Fest
10:00a.m. - 2:00p.m.
Morris University Center
Goshen Lounge

Just Work It: Circuit Aerobics
12:00p.m. - 12:30p.m.
Vadalabene Center, Dance Studio

Dialogue with Senior Citizens
1:00p.m. - 3:00p.m.
Morris University Center,
Mississippi/Illinois Room

Fall for Fitness
3:00p.m. - 7:00p.m.
Woodland Hall
Multipurpose Room

Aerobic Disco Fever
4:45p.m.
Student Fitness Center
Aerobics Room

Aerobics - Level 1-3
6:00p.m.
Student Fitness Center
Aerobics Room

Women's Basketball
SIUE vs. St. Louis Goldstar
(Exhibition), 7:00p.m.
Vadalabene Center
Gymnasium

Look For Upcoming Events

Hollywood ★ Tan
Voted SIUE's Best Tanning Salon 1998

8 VISITS

\$19.98

\$1.00 TANS EVERY SUNDAY!!

288-4560



McDonald's of Edwardsville

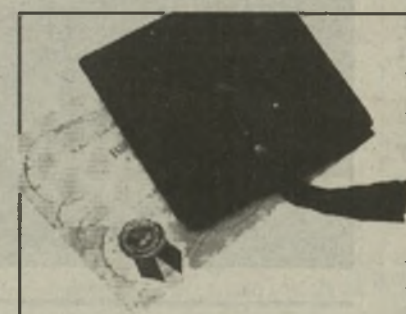


NOW HIRING

Do you have free time?
Days, nights, or weekends
Flexible hours to work
around your schedule

Apply in person

1704 Troy Road, Edwardsville, Illinois



Don't Let Graduation Mean the End To Your Health Insurance

You've worked hard for your diploma. So don't let an unnecessary gap in health insurance set you back financially.

Whether you're coming off your parents' health plan, finishing a student health plan or waiting for coverage through a new employer, Short Term Medical from Fortis Health is the answer. Short Term Medical was designed with your specific needs in mind — you choose your deductible, rate of payment and length of coverage. Don't take chances with your future, call us today!

For more information on Student Select, contact:

Allegiance Insurance

500 O'Hare Drive Suite 100 • Troy, IL 62294

Call (618) 667-2393 Today!

24 hour fax quotes available (618) 667-2790

Affordable Health Care Protection for College Students of All Ages



FORTIS

Gold partners. Flexible solutions™
Fortis Health

Insurance contracts are issued and underwritten by Fortis Insurance Company, Milwaukee, WI.

a trip to the
film in Los
Plaza is at
n. 314-842-

re

ow returns to
performance
Nov. 15.
64.50. Fox
Grand, 314-

s Circus

and Barnum
performs nine
mes through
. Tickets are
iel Center is

of N.O.R.M.L.
on for the
(ws) hosts its
8 - 10 p.m.
meeting room
nty Library
The library's
t 1640 S.
95.

Let There Be Bridges



RT. 3 SOUTH Turn Left at HARDEES 1/4 ml.



West Chain of Rock Rd.

Bridges

Useless Facts

In 1930 the Philadelphia Phillies had eight .300 hitters but finished last with a 52-102 record due to their whopping 6.71 ERA and 239 errors.

Sports & Cougars



Coming UP Next

Today

> Men's basketball battles Team Reebok in an exhibition game 7:30 p.m. in the VC

Friday

> Volleyball vs. Quincy, VC, 7:30 p.m. quarterfinals, TBA

◆ PAGE 8

The Alestle

THURSDAY, NOVEMBER 5, 1998 ◆



News from the foul line

By Todd Spann

Hello

Former pro-wrestler Jesse "the body" Ventura has become the Governor of Minnesota.

North and South have never been so close.

NFL

Two of the Midwest's worst face off this Sunday in the NFL and, of course, this area will televise only that one game.

The Chicago Bears and St. Louis Rams will showcase their combined five victories and prove once again why they only have a combined five victories.

Lets all hope for a television blackout.

NBA

The National Basketball Association was supposed to start its season Tuesday but both sides are arguing about how much money should be made.

Right now there are over \$1 billion worth of salaries on the table but apparently that isn't enough.

Agents are saying that if the players are not paid the way they want them to be paid then they would rather not have them paid.

NBA owners and players think they are losing money now, just wait till the fans have better things to do with their money than go to games.

Soccer

The women's soccer team stays the fifth-ranked team in Division II soccer this week.

During the Cougar Classic over the weekend SIUE beat University of Minnesota-Duluth but battled to tie Truman State University 1-1.

The Cougars host the GLVC tournament this week and are seeded first in the tournament.

The Cougars received a first round bye for Wednesday's games and will play the winner of the Quincy/Northern Kentucky game today.

Men's Basketball



Cougars start preseason tonight

BY BRETT LICATA
SPORTS WRITER

There have been some familiar noises coming out of the Vadalabene Center lately. Squeaking shoes, bouncing balls and swishing nets to name a few. It can only mean that basketball season is here again.

The SIUE men's basketball team will kick off its pre-season schedule tonight against Team Reebok at 7:30 p.m. at the Vadalabene Center.

Head coach Jack Margenthaler is excited to unveil an SIUE squad that is

vastly different from last year's group.

Many new faces will grace the court this season as only two of last year's heavy contributors remain.

"We have a lot of new players, both transfer students and high school graduates, on our roster this year," Margenthaler said. "Although we have a bunch of fresh faces out there, these guys are really adapting to one another well."

Senior Tim Thorsen and junior Travis Wallbaum are the only two experienced players that Margenthaler has back on his roster from last year.

"I'm looking for a lot of leadership from those two guys," Margenthaler said.

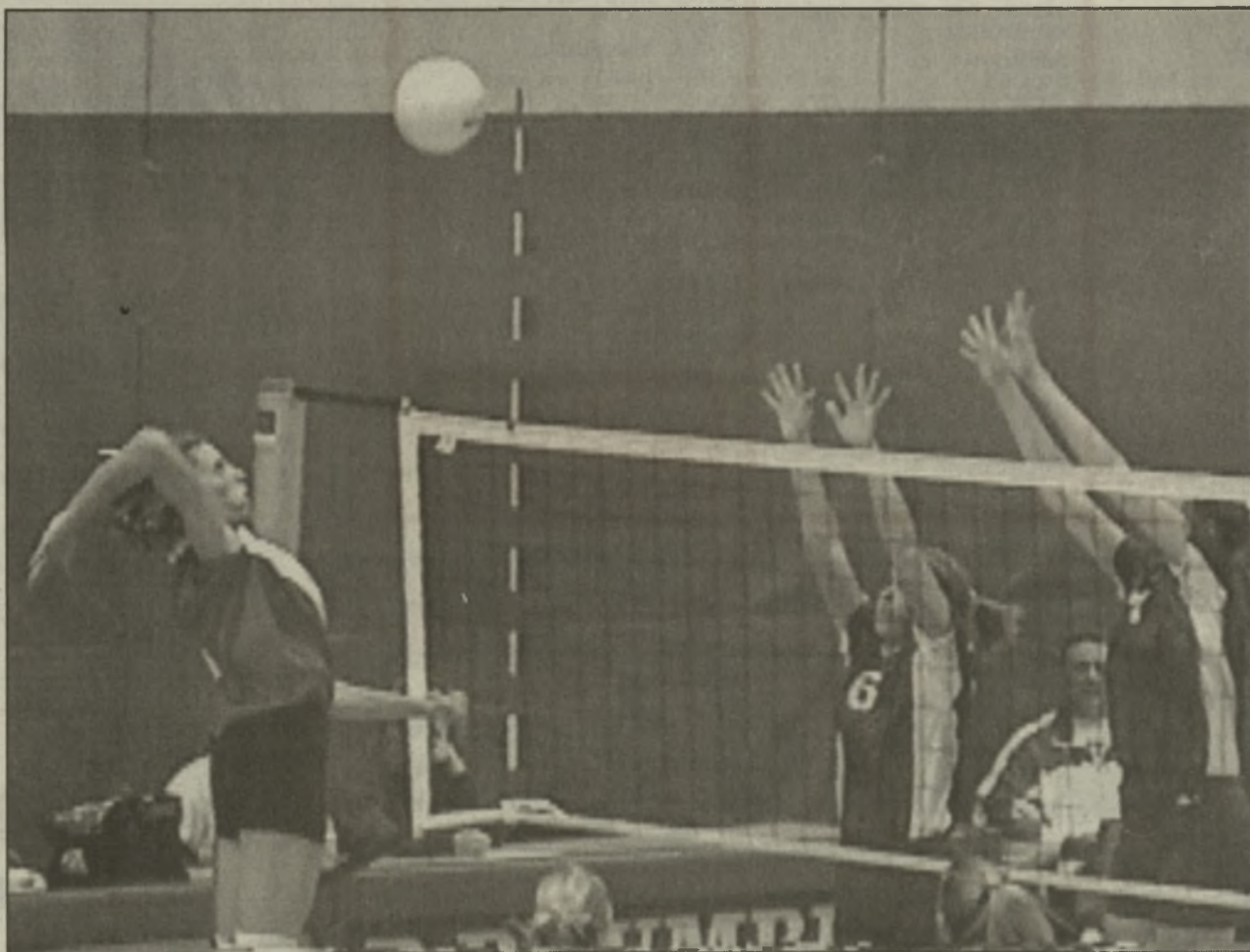
With a wealth of new talent on the team, Margenthaler wants to give everyone a chance to play and contribute.

Junior forward Antonio McKinzie is a transfer student from Collin County Community College in Plano, Texas. He has great potential and should see plenty of minutes.

James Minshall, a transfer student from the University of San Diego, will take over the point guard position.

see BASKETBALL, page 9

Volleyball



Cougars fall to the rocks

Brad Anderson/for the Alestle

Michelle Gilman sizes up a kill during a 3-1 loss to Rockhurst Tuesday evening in the Vadalabene Center. The loss drops the Cougars to 26-5 overall and Rockhurst goes to 35-1.

"There's no place like home" — Andy Korbesmeyer

Well it's that time of year again, time for the college basketball season to begin.

Which means it's time to point fingers and lay blame as to why attendance is so poor at SIUE basketball games. I think the attendance problem is a two-headed monster. There are things the students could do and things the athletic department should do to alleviate the problem.

First, I'll start with the students. I understand we're not Duke or UCLA or Michigan or whoever you like to watch. Believe me, there is nothing I'd rather watch than a Kansas vs. Mizzou game. But, SIUE is in the best Division II conference in the country. The Great Lakes Valley Conference has had a team in the National Championship game for the last five years.

I understand that because D-II B-ball doesn't get the exposure that other sports get, SIUE students don't know players from other teams and probably don't know many players on our team. Let me tell you, you are missing some great players and teams.

Each year on both the men's and women's side, you can count on seeing a few All-Americans come through the Vadalabene Center. And between Kentucky and Southern Indiana, we will usually play the No. 1 ranked team in the country at least once. And this year with Kim Lowe and Misi Clark, we have All-American candidates we can watch every night.

Southern Illinois is supposed to be a basketball hotbed. Where are all you students who played high school basketball? Where are the other sports teams who want fans at their games? Give and you shall receive.

Where are the Greek organizations? Why don't we have a cheering section? The games are usually on Thursday or Saturday nights. Why not swing by the game as a prelude to your partying?

Well, people of the athletic department, now it is your turn. I have played soccer and broadcast basketball games for SIUE from each school in our conference. I have to tell you the

see ANDY, page 10

denos
ukes
irros
etfield
onillas
ondal
sue

300 18 60 8
292 29 72 9
279 20 68 8
279 41 140 22
277 29 101 12
273 42 151 24

The Numbers

300 18 60 8 18
292 29 72 9 21
279 20 68 8 19
279 41 140 22 39
277 29 101 12 28
273 42 151 24 44

Cross Country

Women's GLVC Championships		
Rank	School	Total
1	S. Indiana	38
	Total time: 1:52:31.7	
2	Wis-Parkside	41
	Total time: 1:52:47.5	
3	Lewis	122
	Total time: 1:58:54.9	
4	SIUE	123
	Total time: 2:00:07.7	
5	Indianapolis	131
	Total time: 2:00:10.7	
6	N. Kentucky	185.
	Total time: 2:04:23.1	
7	St. Joseph's	194
	Total time: 2:06:42.3	
8	Bellarmino	204
	Total time: 2:06:58.3	
9	IP Fort Wayne	218
	Total time: 2:09:27.7	
10	Quincy	229
	Total time: 2:17:20.4	
Runner of the Year: Kasia Arient, Lewis		
Freshman of the Year: Amber Antonia, Wis-Parkside		
Coach of the Year: Mike Hillyard, S. Indiana		

Individual Results

Rank	Athlete	School	Time
1	Arient, Kasia	Lewis	21:06.50
2	Bayser, Beth	Lewis	21:43.20
3	Petersen, Laura	Wis-Parkside	21:48.10
4	Shepler, Nicole	S. Indiana	21:53.50
5	Moore, Christy	S. Indiana	22:20.90
6	Eddy, Milissa	S. Indiana	22:23.40
7	Antonia, Amber	Wis-Parkside	22:23.80
8	Kelley, Ann	Wis-Parkside	22:25.20
9	Harriman, Maria	Indianapolis	22:39.30
10	McIntyre, Jennifer	S. Indiana	22:44.30
11	Muffler, Linda	Wis-Parkside	23:02.50
12	Branner, Jill	Wis-Parkside	23:07.90
13	Decker, Jessica	S. Indiana	23:09.60
14	Verhaeghe, Missy	Lewis	23:10.90
15	Newell, Kendra	SIUE	23:15.50
16	Bozue, Amanda	SIUE	23:24.80
17	Ribes, Lisa	SIUE	23:35.60
18	Shumway, Missy	Wis-Parkside	23:42.60
19	Vagedes, Jessica	S. Indiana	23:38.10
20	Nowak, Lisa	Wis-Parkside	23:42.60

Soccer

National Soccer Coaches Association of America Women's NCAA Division II National Rankings		
No.	School	Record
1	Franklin Pierce (NH)	17-0-0
2	Lynn (Fla.)	14-1-0
3	Sonoma State (CA)	20-0-0
4	Bloomsburg (PA)	15-0-4
5	SIUE	13-1-2
6	West Virginia Wesleyan	11-2-2
7	Southern Indiana	15-1-1
8	Francis Marion (SC)	15-3-0
9	Mesa St (CO)	16-3-1
10	Ashland (OH)	14-1-1
11	Adelphi Univ (NY)	13-2-2
12	American International(MA)	14-2-0
13	Barry (FL)	11-3-0
14	Belmont Abbey (NC)	17-3-0
15	Cal State-Dominguez Hills	12-5-1
16	Metropolitan State (CO)	16-3-1
17	St. Joseph's (IN)	15-1-2
18	Merrimack College (MA)	15-3-1
19	Lincoln Memorial (TN)	14-2-2
20	UC Davis	13-5-1
21	Mercyhurst (PA)	14-4-1
22	Midwestern St (TX)	16-2-0
23	East Stroudsburg (PA)	12-4-2
24	West Florida	14-2-1
25	SUNY-Binghamton	11-3-1

Basketball

1998-1999 Men's Basketball Schedule		
Date	Event	Time
Nov.5	Team Reebok	7:30 p.m.
Nov. 14	SE Mo State	7:30 p.m.
Nov. 21	Eureka	3 p.m.
Nov. 28	Wis-Park	7:30 p.m.
Nov. 30	Lewis	7:30 p.m.
Dec. 3	Indianapolis	7:30 p.m.
Dec. 5	N. Kentucky	3 p.m.
Dec. 12	S. Indiana	3 p.m.
Dec. 19	Olivet Nazarene	7 p.m.
Jan. 2	Ken. Wesleyan	3 p.m.
Jan. 4	Bellarmino	7:30 p.m.
Jan. 7	Quincy	7:30 p.m.
Jan. 11	UMSL	7:30 p.m.
Jan. 14	IUPU- FW	7:30 p.m.
Jan.16	St Joseph's	3 p.m.
Jan. 21	N. Ken	6:45 p.m.
Jan. 23	Indianapolis	6:30 p.m.
Jan. 25	Drury	7:30 p.m.
Jan. 28	Lewis	7:30 p.m.
Jan. 30	Wis-Park	3 p.m.
Feb. 4	St Joseph's	7:30 p.m.
Feb 6	IUPU- FW	2 p.m.
Feb. 9S.	Indiana	7:30 p.m.
Feb. 11	UMSL	7:30 p.m.
Feb. 13	Quincy	3 p.m.
Feb. 18	Bellarmino	7 p.m.
Feb. 20	Ken. Wesleyan	7:30 p.m.
Feb. 25	GLVC Q-finals	TBA
Feb. 26	GLVC Semi's	TBA
Feb. 27	GLVC Finals	TBA
Mar. 4-7	NCAA-II tourney	TBA
Mar. 17-20	NCAA Elite Eight	
Home games in bold.		

Volleyball

Rockhurst	15	13	15	15
SIUE	12	15	12	10
Team records				
Rockhurst	35-1			
SIUE	26-5			

BASKETBALL

from page 8

Senior Ben Wierzba transferred from the University of South Alabama to add a scoring touch from the perimeter.

Ty Moss and Zack Lee are two first-year collegiate players who can also contribute on the offensive end.

"This team is very different from a year ago. We had a lot of veterans last year," Margenthaler said. "We've brought in a number of new players, but they're doing well and beginning to understand each other's abilities."

Team Reebok is a group of former collegiate players with good size that will give SIUE a stern test before they open the season on Nov. 14 against Southeast Missouri State University.

GLVC action for the Cougars will begin at Wisconsin-Parkside on Nov. 28.

REC Sports

Standings

3 on 3 Basketball					
				Sportsmanship	
<u>ACC</u>	<u>W</u>	<u>L</u>	<u>F</u>	<u>Rating</u>	
Pyromaniacs	2	0	0	10	
Sharpshooters	2	0	0	10	
Leapin' Loitz's	2	0	0	10	
Alpha Kappa Lamdba	1	1	0	10	
Sig Eps II	1	1	0	8	
Phi Psi II	0	2	0	8	
Team Wetnight	(Dropped)				
<u>SEC</u>	<u>W</u>	<u>L</u>	<u>F</u>	<u>Ratings</u>	
507 Freakshow	2	0	0	10	
Prairie Dogs	2	0	0	10	
Naturals	2	0	0	8	
Phi Psi I	0	2	0	10	
Randy's	0	2	0	10	
Street Squirrels	0	2	0	6.5	
Tri-Lambs	0	2	0	5.0	
<u>SEC</u>	<u>W</u>	<u>L</u>	<u>F</u>	<u>Ratings</u>	
Da Bomb Squad	2	0	0	10	
The Has Beens II	1	0	0	10	
VIP	1	1	0	10	
Dazed and Confused	1	1	0	10	
Chicks with Basketballs	0	1	0	10	
Knight Time	0	2	0	10	
Floor Hockey					
<u>Team</u>	<u>W</u>	<u>L</u>	<u>T</u>	<u>F</u>	<u>Ratings</u>
Wings	4	0	0	0	9.8
AKL	3	1	0	0	8.8
Phi Psi	3	1	0	0	8.8
Fun Loving Fools	2	2	0	0	9.3
Army ROTC	2	2	0	0	8.8
Top Shelf	1	3	0	0	9.8
Sigma Pi	1	3	0	1	6.5
Monks on Ice	0	4	0	1	4.3

Reminder: The playoffs will be a single elimination tournament consisting of all teams with at least a 6.0 sportsmanship rating.

"The family suggests that memorial contributions be made to the American Heart Association." When people want to honor a loved one and fight heart disease.

American Heart Association
Fighting Heart Disease and Stroke

Fall for Fitness Day

Wednesday, November 11

3pm - 7pm

Woodland Hall



Free Fitness Testing...
Body Fat, Flexibility, Strength,
Cardiovascular Fitness, and more!

Students, faculty, staff, & Student
Fitness Center members welcome.

****Please wear workout attire.****

A Wellness Center Initiative

SIUE Wellness Program • Campus Recreation, Student Affairs • 650-B-FIT



CAMPUS RECREATION

Look us up on the NET at <http://www.siu.edu/CREC> • Campus Recreation, Student Affairs

ANDY

from page 8

Vadalabene Center has the best facilities, but it is near the bottom in atmosphere.

I understand that the gym is great for packing in high school fans for the playoffs but we're not a high school. Who is the priority?

We love to show off our pretty building to visiting schools. But does it give us that same home-court advantage that can help our team win games?

Teams look forward to coming here and partaking of our lavish accommodations. At Quincy visiting soccer teams dress in a damp lawn mower garage, with one toilet. Basketball fans at Lewis University and the University of Southern Indiana sit two feet from the sidelines and baselines. These are a few examples of things that can make an out of town team feel uncomfortable before the game even starts.

So what is done to get students at SIUE to attend games? They're free! It's free to sit at home too, so free is not good enough.

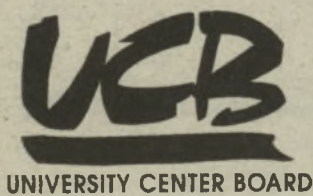
The Prize Putt Contest held during half-time at SIUE is fun to watch but it is only one thing. Other schools do fun things to attract spectators to the games. At each timeout Kentucky Wesleyan throws out souvenir balls, T-shirts, Frisbees, mugs, you name it. Quincy has big-wheel races, pizzas-shoots and other things to get people involved. SIUE's blaring stereo just doesn't measure up.

Students, the athletic department will listen to any suggestions you have. They're easy to work with, go to them.

Athletic Department, just because the students are apathetic doesn't mean you have to be, if you make it fun, they will come.

This is a problem that shouldn't continue. There are no concrete answers as to why we don't have fans but someone should step up and make going to games the thing to do.

The Lady Cougar soccer team will host the GLVC tournament this weekend. I believe the ladies need at least one win to make the National Tournament. If they win both games they should host a few National Tournament games. If they don't win a game they may have to go to Evansville, Ind., or worse yet to Rensselaer, Ind., or if the University of Southern Indiana or St. Joseph's College gets three wins this week, the Lady Cougars may stay home. Good luck, ladies!



GET INTO IT WITH UCB!

Soup & Substance Series

"Gay, Lesbian, & Bisexual Forum"

**Today
Noon - 1:00 pm**

Cahokia Room



International Night

Dinner & Show • Saturday, November 14th • 6:00 - 10:00 pm
Meridian Ballroom

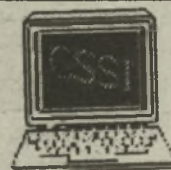
Tickets on sale at
Union Station
\$4.00 - Students
\$8.00 - Faculty,
Staff, & General
Public



Become part of the programming team.

Call 650-3371 for more information

UCB Hotline (618) 650-3372



Computer Solutions
of
Southern Illinois, Inc.
(618) 288-6534

**Free System
Delivery
within the
Metro-East
Area!**

PII 266 Complete System...\$1,299.99
PII 300 Complete System
w/ DVD ROM & 17" Mon.....\$1599.99

**CALL FOR OTHER
CONFIGURATIONS, PARTS
AND ACCESSORIES!!**

3 Year Warranty on Systems!
\$949.99

233MMX SYSTEM!!!
32MB RAM • 3.2GB Hard Drive • 4MB Video Card • 24X CD-ROM
16-bit Sound w/Speakers • 56K FAX Modem w/Voice • 15" Monitor
Surge Protector • Keyboard • Mouse • Windows98 • Software Bundle



692-6000

Montclair Shopping Center, Edwardsville

MONDAYS: 10% OFF w/SIUE ID
Dine in or carry-out!

BUFFET \$2.⁹⁹

Pizza, Salad, Pasta, and Dessert...
New York Style, Thin & Original Thick Crust



Sun. Noon-2pm
Mon. thru Fri.
11am-2pm
Mon. thru Wed.
5:00-8:00pm

SAVE \$1.00

Dine-in only. Not valid with any offer or coupon. Limit 1 coupon per customer, per visit. Tax not included. Valid for up to 2 adults. Offer expires 11/30/98.

**FREE Pitcher
of Coke**



**With the
Purchase
of a
Medium or Large Pizza**

Dine-in only. Not valid with any offer or coupon. Limit 1 coupon per customer, per visit. Tax not included. Valid for up to 2 adults. Offer expires 11/30/98.

Know Your World.
Read
the Alestle

CHESLEY
FENCE & DECK
692-9009

VISIT US AT OUR WEB SITE
WWW.CHESLEYFENCE.COM

Bank Financing - No Down Payment to Qualified Buyers
Family owned business serving Metro-East for 28 Years

Preservation Hall Jazz Band

Sunday, November 8
4:00 p.m.
University Center
Meridian Hall
(618) 650-2320

ARTS
& ISSUES



Everyone needs a little "N'awlins" every now and then, and the Preservation Hall Jazz Band is just the one to provide it. These distinguished musicians have preserved the traditional New Orleans, pre-Dixieland sound for more than fifty years. It's a moveable Mardi Gras ...
Laissez les bontemps roulez!

SIU SOUTHERN ILLINOIS UNIVERSITY EDWARDSVILLE

University Dance Organization Presents:
Guest Artist

Madeline Soglin

November 2 - 15, 1998

Madeline will be teaching modern dance classes:
Mon, Wed, Fri (November 2 -15)
10:00 - 11:30 a.m.
in the VC dance studio.

Classes are open to the public,
FREE of charge.

"Funded in part through Student Activity Fees"
For more information, call 650-2773



**CAP & GOWN
DISTRIBUTION**
FOR DECEMBER 1998 COMMENCEMENT

at University Bookstore

Monday & Tuesday
November 9 & 10, 10am-6pm

Fees:	
Bachelor	\$22.00 Cap, Gown & Tassel
Masters	\$41.00 Cap, Gown, Tassel & Hood
EdD	\$54.75 Cap, Gown, Tassel & Hood
Specialist	\$54.75 Cap, Gown, Tassel & Hood

NOTE:
Fee must be paid at time of distribution. Caps /gowns/hoods are purchased by students to keep as souvenirs.

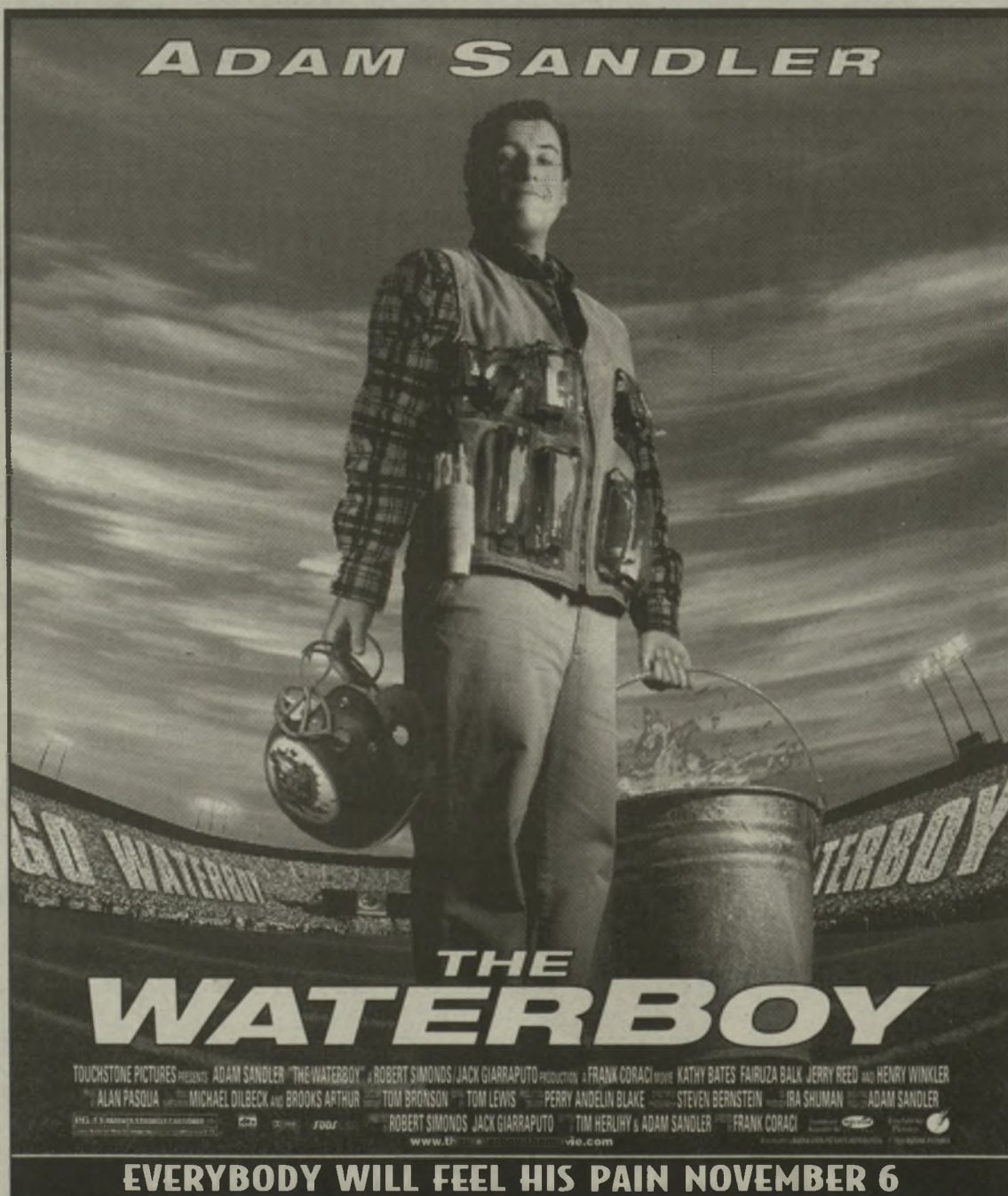
You must be approved by your advisor to participate in graduation.
If you have any questions, please contact your advisor.

Personalized Graduation Announcements are available
ONLY on the above dates.

No Refunds Given



Morris University Center



EVERYBODY WILL FEEL HIS PAIN NOVEMBER 6

classifieds

◆ PAGE 12

The Alestle

THURSDAY, NOVEMBER 5, 1998 ◆

HELP WANTED

Painter Part-Time Good equipment steady work interior exterior \$7-13/hr depending on skill and production. Reply Box 339 Edwardsville 62025 11/5/98

Sell Avon and earn money. Call Linda 1-800-765-4424 2/16/99

Spring Break Plan Now! Cancun, Jamaica, Mazatlan, & S. Padre. Free Meals and parties until Nov. 30th. Campus sales reps. wanted. Earn free trips + cash. 1-800-surfs up. www.studentexpress.com. 11/12/98

Cashier Wanted part-time nights and weekends Lonnie's Liquor Store Collinsville. Call for appointment 10a.m.-2:00p.m. M-F. 344-3430 ask for Chris. 11/5/98

SPRING BREAK 99 Cancun, Nassau, Jamaica, Mazatlan, Acapulco, Bahamas Cruise, Florida, South Padre. Travel Free and make lots of Cash! Top reps are offered full-time staff jobs. Lowest price Guaranteed. Call now for details! www.classtravel.com 800/838-6411 11/12/98

Collinsville Little Caesar's Pizza Now Hiring! Managers and drivers needed. Offering competitive wages and flexible hours! Call 345-8400 for interview. 11/05/98

SPRING BREAK \$99.00 CUNCUN, MAZATLAN OR JAMAICA FROM \$399. Reps Wanted!!! Sell 15 and travel free! Lowest Prices Guaranteed! Info: Call 1-800-446-8355 www.sunbreaks.com 12/10/98

SPRINGBREAK Florida, Texas, Cancun, Mexico, Jamaica, etc. Browse www.icpt.com and call, 1-800-327-6013. Best hotels, prices and parties. Reps, organizations and promoters wanted. Inter-campus Programs. 12/01/98

FOR SALE

Used Books at bargain prices. Good Buy Bookshop, Lovejoy Library Room 0012, Wednesdays and Thursdays 11am-3pm. Sponsored by Friends of Lovejoy Library. 12/03/98

87 Toyota Celica GT-S 103,xxx, clean car. \$2,700 o.b.o. pg #618) 738-7141 11/05/98

Large Sofa and Matching armchair, excellent condition. Make an offer, it's yours! U-haul, call 692-1977 11/10/98

MISCELLANEOUS

Free Kittens: One male, three females. Call (618) 653-4580 12/10/98

PERSONALS

ΣΠ Brother of the Week, Lu-Dog, Superstar of the Wal-Mart parking lot. 11/5/98

ΣΠ Brian, Brother of the week. Fastest stream in the west. Next time get a bigger bottle. 11/5/98

Résumés

Ask about our **Résumé Packages and Writing Service.**

Member of Professional Association of Résumé Writers

Also type papers—any style

The Word Center

One Mark Twain Plaza Suite 325 Edwardsville 692-9673

10% Off for SIUE Students Applies for résumé typesetting only.

SPRING BREAK

Ask about our \$200 per room savings!

CANCUN MAZATLAN JAMAICA SOUTH PADRE

1-800-SURFS-UP www.studentexpress.com

SKI BREAK

Ask about our FREE pair of skis offer!

America's Best Packages Breckenridge - Keystone - Vail January 3-17, 1999 2-7 night packages

www.studentexpress.com

Join the latest Click...

<http://www.siue.edu/ALESTLE/>

Alestle.html

GREENVILLE COLLEGE



FACULTY OPENINGS:

Greenville College, a four-year Christian liberal arts institution affiliated with the Free Methodist Church of North America, seeks part-time instructors for non-traditional degree completion program in organizational leadership. Courses taught evenings in Belleville, Godfrey, Springfield, Litchfield, Centralia, Effingham and Greenville. Ability to teach research methods, statistics, and guide students through research project. Doctorate preferred. Master's degree in related field required. Courses taught from a Christian perspective. Candidates must submit letter of interest, vita, and statement of faith to:

Dean Holden
Office of Adult and Graduate Studies
Greenville College
P.O. Box 159
Greenville, IL 62246

the Alestle PLACING A CLASSIFIED AD

Frequency Rates

(Five (5) words equal one line)
All classifieds and personals must be paid in full prior to publication.

1 run: \$1.00/line	5 runs: \$.90/line
(2 line minimum)	20 runs: \$.85/line
3 runs: \$.95/line	Personals: \$.50

Deadlines

Tuesday Publication: Noon Friday
Thursday Publication: Noon Tuesday

Adjustments

Read your ad on the first day it appears. If you cannot find your ad or discover an error in your ad, call 650-3528 or come into the office. Positively no allowance made for errors after the first insertion of advertisement. No allowance of correction will be made without a receipt.

Placing Ads

To place a classified ad, come to the Office of Student Publications, located in the UC, Rm. 2022, and fill out a classifieds form.

Alestle Office Hours:

Monday thru Friday: 8am - 4:30pm
650-3528

AUTO INSURANCE

- ✓ **LOWEST RATES**
- ✓ **NO ONE REFUSED**
- ✓ **CREDIT CARDS OK**
- ✓ **FAST PHONE QUOTES**
- ✓ **LOW DOWN PAYMENTS**

GREG SCHMIDT AGENCY

100 North Main, Edwardsville
656-9086

They're Here!!!

Rent Us Now...

1999 Durangos, Intrepids, Concords, LHS's & 300m's

Cassens
EDWARDSVILLE/GLEN CARBON
CHRYSLER • DODGE • PLYMOUTH

Call Rental **692-7386**

3333 S. HWY 159 • Glen Carbon
2 Miles North Of I-270



99 Dodge Durango

Rent-a-Truck

THE GALLERY

2858 HWY 159
Edwardsville
659-0506

659-0506

"what this college town wants!"

HOURS
SUN - THUR
OPEN TILL 1
FRI - SAT
OPEN TILL 2

FRI
13th

TUES

EVERY
THUR

Schwag -

Grateful Dead Tribute Concert

\$1 bottles of Hardcore Cider, Bud, Bud Light & Miller Light

50¢ DRAFT PITCHERS

Mississippi River Festival

Go back

in time with

Dining Services to the

Mississippi River Festival

era. Enjoy the music from 10:30am

to 1:00pm. November 5th

Center Court is located on the lower level of the Morris University Center



"You can prevent colon cancer, even beat it."

• HILLARY RODHAM CLINTON •

MAKE THE TIME TO GET A TEST THAT COULD SAVE YOUR LIFE

Colon cancer is the second leading cancer killer and everyone aged 50 and older is at risk. More than 50,000 Americans will die from colon cancer and 131,600 new cases will be diagnosed this year. Talk to your doctor about getting tested.

SPONSORED BY THE NATIONAL COLORECTAL CANCER ROUNDTABLE



FOR MORE INFORMATION, CALL THE AMERICAN CANCER SOCIETY
AT 1-800-ACS-2345

Know Your World.

Read the Alestle